

March 3, 2022

ELECTRONIC DELIVERY

Mr. Elliott Russell
Environmental Protection Specialist
Colorado Department of Natural Resources
Division of Reclamation, Mining and Safety
Office of Mined Land Reclamation
1313 Sherman Street, Room 215
Denver, Colorado 80203

**RE: Permit No. M-1980-244; Cripple Creek & Victor Gold Mining Company; Cresson Project;
Schist Island Backfill Weekly Report**

Mr. Russell,

In accordance with Amendment Thirteen Second Adequacy Review Response, comment number 73; Newmont Corporation's Cripple Creek and Victor Gold Mining Company (CC&V) hereby provides a weekly report documenting backfilling activities completed in Schist Island during Week 25 of the project, covering the period from 2/12/22 to 2/18/22.

Should you require further information please do not hesitate to contact Katie Blake at 719-689-4048 or Katie.Blake@Newmont.com or Justin Raglin at Justin.Raglin@Newmont.com.

Regards,

PP



Justin Raglin
S&ER Manager
Cripple Creek and Victor Gold Mining Company

EC: E. Russell – DRMS
M. Cunningham – DRMS
M. Crepeau – Teller County
L. Morgan – Teller County
J. Raglin – CC&V
K. Blake – CC&V
M. Bujenovic – CC&V
N. Townley – CC&V

Enc (1)

WE2022.02.11 VLF2 Phase 3 Weekly Report_Week 25

File: S:\CrippleCreek\na.cc.admin\Environmental\New File Structure\2-
Correspondence\DNR\DRMS\2022\Outgoing

ATTACHMENT 1



FIELD WEEKLY PROGRESS REPORT

PROJECT: VALLEY LEACH FACILITY (VLF2) PHASE 3 CQA HIGH COMPACTION BACKFILL
SITE: CRIPPLE CREEK & VICTOR GOLD MINE (COLORADO)
CONTRACTOR: NEWMONT CC&V MINING OPERATIONS
WEEK ENDING: FRIDAY, FEBRUARY 18, 2022

REPORTING PERIOD: 02.12.2022 THROUGH 02.18.2022

Days	Sat	Sun	Mon	Tue	Wed	Thu	Fri
Work Shifts	D/N	D/N	D/N	D/N	D/N	D/N	D/N
D – DAYSHIFT		N – NIGHTSHIFT			W – WEATHER		

AMBIENT TEMPERATURE RANGES AND WEATHER CONDITIONS:

HIGHS: 46°F TO 25°F

LOWS: 26°F TO -1°F

CLOUD COVER: PARTLY TO MOSTLY CLOUDY

PRECIPITATION: SNOW 02/16 PM 5"-7"

WIND: WIND GUSTS FROM 10 TO 35 MPH

NEWFIELDS PERSONNEL ONSITE:

Personnel	Sat	Sun	Mon	Tue	Wed	Thu	Fri
	Feb 12	Feb 13	Feb 14	Feb 15	Feb 16	Feb 17	Feb 18
Jay Moore	-	-	-	-	-	-	-
Roxanne Li	-	-	-	-	-	-	-
Tyler Wendlandt	-	LS	LS	LS	LS	LS	LS
George Fry	-	-	-	-	-	-	-
PR – Project Resident; LS – Lead Soils Technician; LG – Lead Geosynthetics; ST – Soils Technician; GT – Geosynthetics Technician; LT – Laboratory Technician; PCE – Project Certifying Engineer							

1.0 MINING OPERATIONS

1.1 Schist Island High Compaction Back Fill

CC&V completed the placement of the 10,020' elevation high compaction backfill lift. CC&V began the placement of the 10,025' elevation high compaction backfill lift. Run of Mine material



was loaded from the Schist Island Pit and West/South Cresson Pit and hauled by 793 haul trucks to the high compaction backfill. A D10 dozer placed material in a 5 foot GPS controlled leading edge lift. The haulage traffic travelled over the entirety of the fill, splitting tracks with each loaded haul truck. The D10 leveled out the windrows along the pit wall and pushed structural material into any surface irregularities along the pit wall.

CC&V shovel and loader operators monitored the Run of Mine material size being sent to the high compaction backfill. Out of specification loads containing 2 foot plus sized material were sent to the ECOSA stockpile. 2 foot plus sized material that was not removed at the dig-face by the shovel or loader operators was removed by a D10 dozer during material placement. The oversize material was stockpiled by the dozer out of the way above the current lift on the haul road against the pit high wall. A 993 loader loaded a 777 haul truck with the unsuitable material and it was then hauled to the ECOSA stockpile.

2.0 MEETINGS AND COMMUNICATIONS

NewFields personnel met with Mine Operations Supervision about the high compaction backfill progress and material quality.

3.0 MISCELLANEOUS, ISSUES, AND CONCERNS

- NewFields personnel completed the approval of the 10,020' lift. Visual inspection and the method compaction specification were utilized to approve the lift.
- NewFields personnel completed a partial approval of the 10,025' lift. Visual inspection and the method compaction specification were utilized to approve the lift.
- Newmont Operations personnel removed snow (any area with plus 2" in accumulation) from out in front of the leading edge of high compaction backfill placement during a weather event on the night of 2/16/22. Snow was also removed from the 10,000' elevation lift from STA 15+00 to STA 25+00 on 12/17/22 (Drawing A105) around the rough grade of the PSSA. Snow was spread out in designated areas outside of fill limits, to allow it to melt during warmer temperatures.
- A progress map provided by Newmont CC&V was utilized to create the attached figures showing high compaction backfill progress.



4.0 PHOTOGRAPHS



February 14, 2022 – High Compaction Backfill placement (TW)



February 18, 2022 – High Compaction Backfill progress (TW)



February 18, 2022 – High Compaction Backfill snow removal (TW)

Report Review and Approval:

Role	Name	Signature
CQA Monitor/Report Prepared By	Tyler Wendlandt	
<i>Or CQA Designee</i>		
Project Engineer	Jeff Gaul	
<i>Or Projects Designee</i>		



Attachments:

Figure 1 – Section Approval Progress 10,020' Lift (Map Date 02/11/22)

Figure 2 – Section Approval Progress 10025' Lift (Map Date 02/11/22)

Figure 1: Section Approval Progress 10,020' Lift

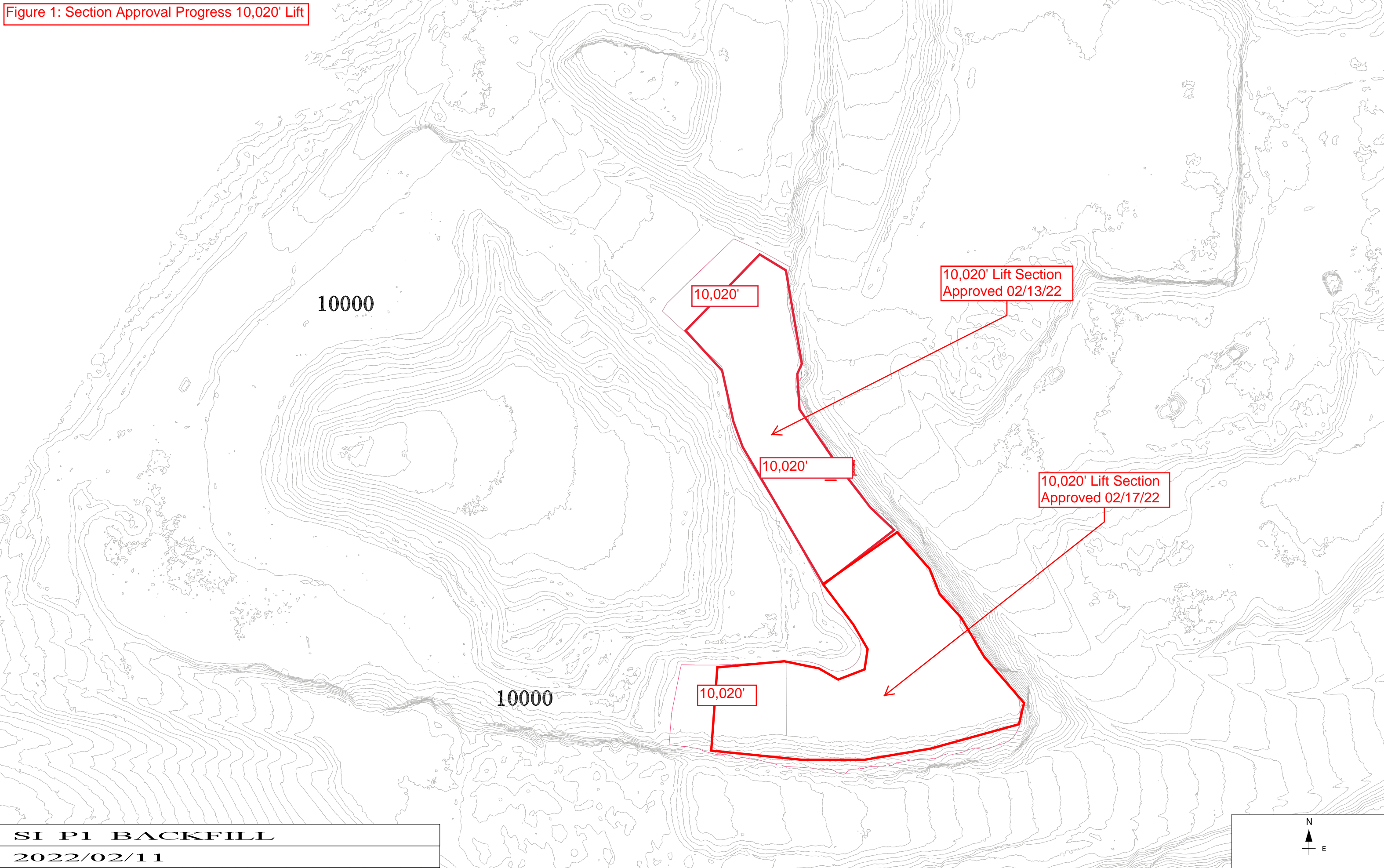


Figure 2: Section Approval Progress 10,025' Lift

