

February 24, 2022

**ELECTRONIC DELIVERY**

Mr. Elliott Russell  
Environmental Protection Specialist  
Colorado Department of Natural Resources  
Division of Reclamation, Mining and Safety  
Office of Mined Land Reclamation  
1313 Sherman Street, Room 215  
Denver, Colorado 80203

**RE: Permit No. M-1980-244; Cripple Creek & Victor Gold Mining Company; Cresson Project;  
Schist Island Backfill Weekly Report**

Mr. Russell,

In accordance with Amendment Thirteen Second Adequacy Review Response, comment number 73; Newmont Corporation's Cripple Creek and Victor Gold Mining Company (CC&V) hereby provides a weekly report documenting backfilling activities completed in Schist Island during Week 24 of the project, covering the period from 2/05/22 to 2/11/22.

Should you require further information please do not hesitate to contact Katie Blake at 719-689-4048 or [Katie.Blake@Newmont.com](mailto:Katie.Blake@Newmont.com) or Justin Raglin at [Justin.Raglin@Newmont.com](mailto:Justin.Raglin@Newmont.com).

Regards,



Katie Blake  
External Relations & Environmental Manager  
Cripple Creek and Victor Gold Mining Company

EC: E. Russell – DRMS  
M. Cunningham – DRMS  
M. Crepeau – Teller County  
L. Morgan – Teller County  
J. Raglin – CC&V  
K. Blake – CC&V  
M. Bujenovic – CC&V  
N. Townley – CC&V

Enc (1)

WE2022.02.11 VLF2 Phase 3 Weekly Report\_Week 24

File: S:\CrippleCreek\na.cc.admin\Environmental\New File Structure\2-  
Correspondence\DNR\DRMS\2021\Outgoing

## ATTACHMENT 1

Newmont Mining Corporation  
 Cripple Creek & Victor Gold Mine  
 2022 Quality Assurance Oversight  
 NewFields Job No. 475.0106.056  
 Week Ending Friday, February 11, 2022



## FIELD WEEKLY PROGRESS REPORT

**PROJECT:** VALLEY LEACH FACILITY (VLF2) PHASE 3 CQA HIGH COMPACTION BACKFILL  
**SITE:** CRIPPLE CREEK & VICTOR GOLD MINE (COLORADO)  
**CONTRACTOR:** NEWMONT CC&V MINING OPERATIONS  
**WEEK ENDING:** FRIDAY, FEBRUARY 11, 2022

**REPORTING PERIOD: 02.05.2022 THROUGH 02.11.2022**

Days	Sat	Sun	Mon	Tue	Wed	Thu	Fri
Work Shifts	D/N	D/N	D/N	D/N	D/N	D/N	D/N
D – DAYSHIFT		N – NIGHTSHIFT			W – WEATHER		

### AMBIENT TEMPERATURE RANGES AND WEATHER CONDITIONS:

HIGHS: 44°F TO 24°F

LOWS: 26°F TO 1°F

CLOUD COVER: PARTLY TO MOSTLY CLOUDY

PRECIPITATION: NONE

WIND: WIND GUSTS FROM 10 TO 50 MPH

### NEWFIELDS PERSONNEL ONSITE:

Personnel	Sat	Sun	Mon	Tue	Wed	Thu	Fri
	Feb 5	Feb 6	Feb 7	Feb 8	Feb 9	Feb 10	Feb 11
Jay Moore	-	-	-	-	PCE	-	-
Roxanne Li	-	-	-	-	PR	-	-
Tyler Wendlandt	-	-	LS	LS	LS	LS	LS
George Fry	ST	-	-	-	-	-	-
PR – Project Resident; LS – Lead Soils Technician; LG – Lead Geosynthetics; ST – Soils Technician; GT – Geosynthetics Technician; LT – Laboratory Technician; PCE – Project Certifying Engineer							

## 1.0 MINING OPERATIONS

### 1.1 Schist Island High Compaction Back Fill

CC&V completed the placement of the 10005', 10010' and the 10015' elevation high compaction backfill lifts. CC&V began the placement of the 10020' elevation high compaction backfill lift. Run



of Mine material was loaded from the Schist Island Pit and West/South Cresson Pit and hauled by 793 haul trucks to the high compaction backfill. A D10 dozer placed material in a 5 foot GPS controlled leading edge lift. The haulage traffic travelled over the entirety of the fill, splitting tracks with each loaded haul truck. The D10 leveled out the windrows along the pit wall and pushed structural material into any surface irregularities along the pit wall.

CC&V shovel and loader operators monitored the Run of Mine material size being sent to the high compaction backfill. Out of specification loads containing 2 foot plus sized material were sent to the ECOSA stockpile. 2 foot plus sized material that was not removed at the dig-face by the shovel or loader operators was removed by a D10 dozer during material placement. The oversize material was stockpiled by the dozer out of the way above the current lift on the haul road against the pit high wall. A 993 loader loaded a 777 haul truck with the unsuitable material and it was then hauled to the ECOSA stockpile.

## **2.0 MEETINGS AND COMMUNICATIONS**

NewFields personnel met with Mine Operations Supervision about the high compaction backfill progress and material quality.

## **3.0 MISCELLANEOUS, ISSUES, AND CONCERNS**

- NewFields personnel completed the approval of the 10005', 10010', 10015' lift. Visual inspection and the method compaction specification were utilized to approve the lift.
- A progress map provided by Newmont CC&V was utilized to create the attached figures showing high compaction backfill progress.



#### 4.0 PHOTOGRAPHS



**February 10, 2022 – High Compaction Backfill placement (TW)**



**February 11, 2022 – High Compaction Backfill wheel rolling (TW)**




Newmont Mining Corporation  
 Cripple Creek & Victor Gold Mine  
 2022 Quality Assurance Oversight  
 NewFields Job No. 475.0106.056  
 Week Ending Friday, February 11, 2022



**February 11, 2022 – High Compaction Backfill placement (TW)**

***Report Review and Approval:***

Role	Name	Signature
<b>CQA Monitor/Report Prepared By</b>	<b>Tyler Wendlandt</b>	
<b><i>Or CQA Designee</i></b>		
<b>Project Engineer</b>	<b>Jeff Gaul</b>	DocuSigned by:  1122B343C4A54DD...
<b><i>Or Projects Designee</i></b>		

Newmont Mining Corporation  
Cripple Creek & Victor Gold Mine  
2022 Quality Assurance Oversight  
NewFields Job No. 475.0106.056  
Week Ending Friday, February 11, 2022

---



**Attachments:**

Figure 1 – Section Approval Progress 10005' Lift (Map Date 02/4/22)

Figure 2 – Section Approval Progress 10010' Lift (Map Date 02/7/22)

Figure 3 – Section Approval Progress 10015' Lift (Map Date 02/11/22)



Figure 1: Section Approval Progress 10005' Lift

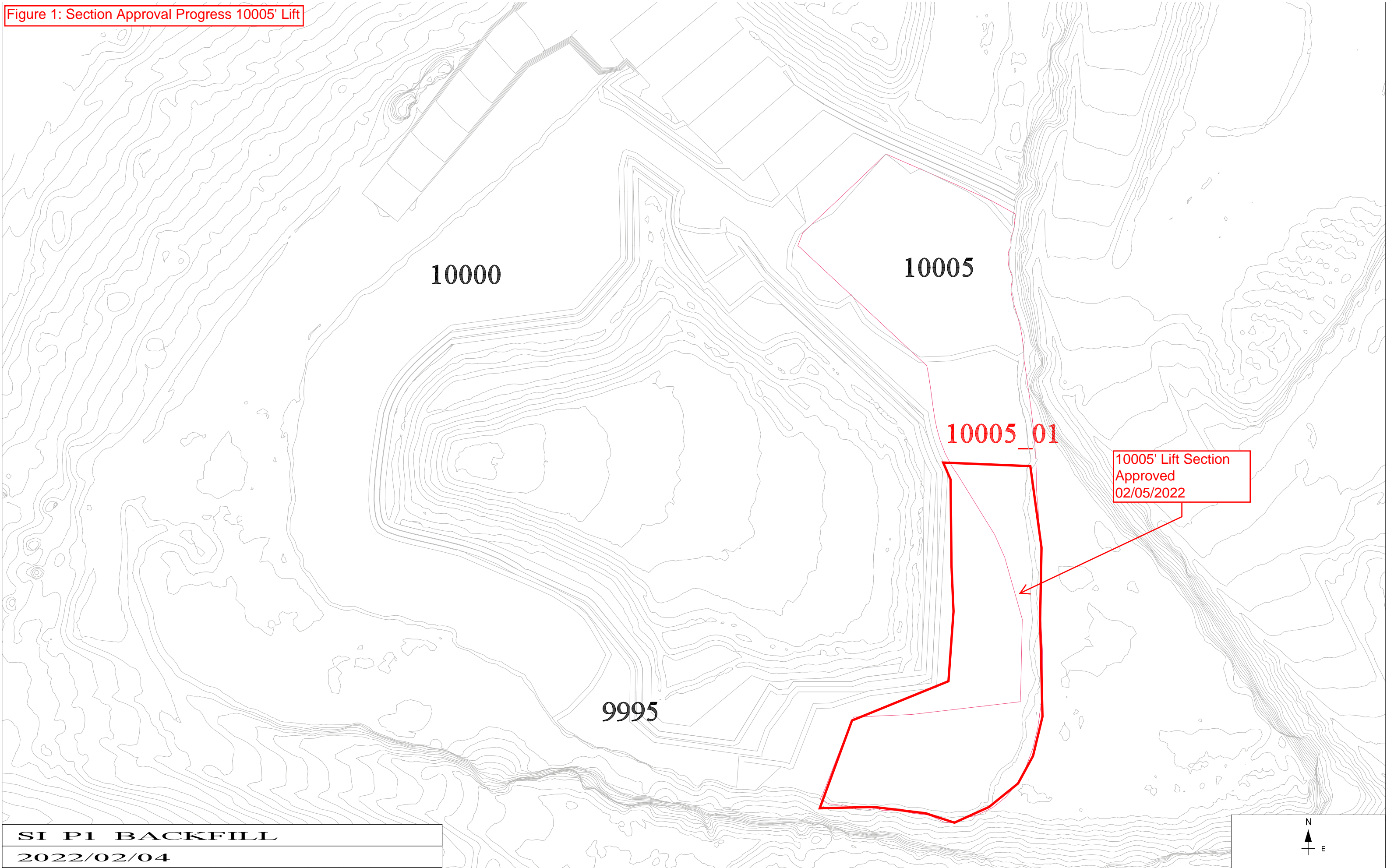


Figure 2: Section Approval Progress 10010' Lift

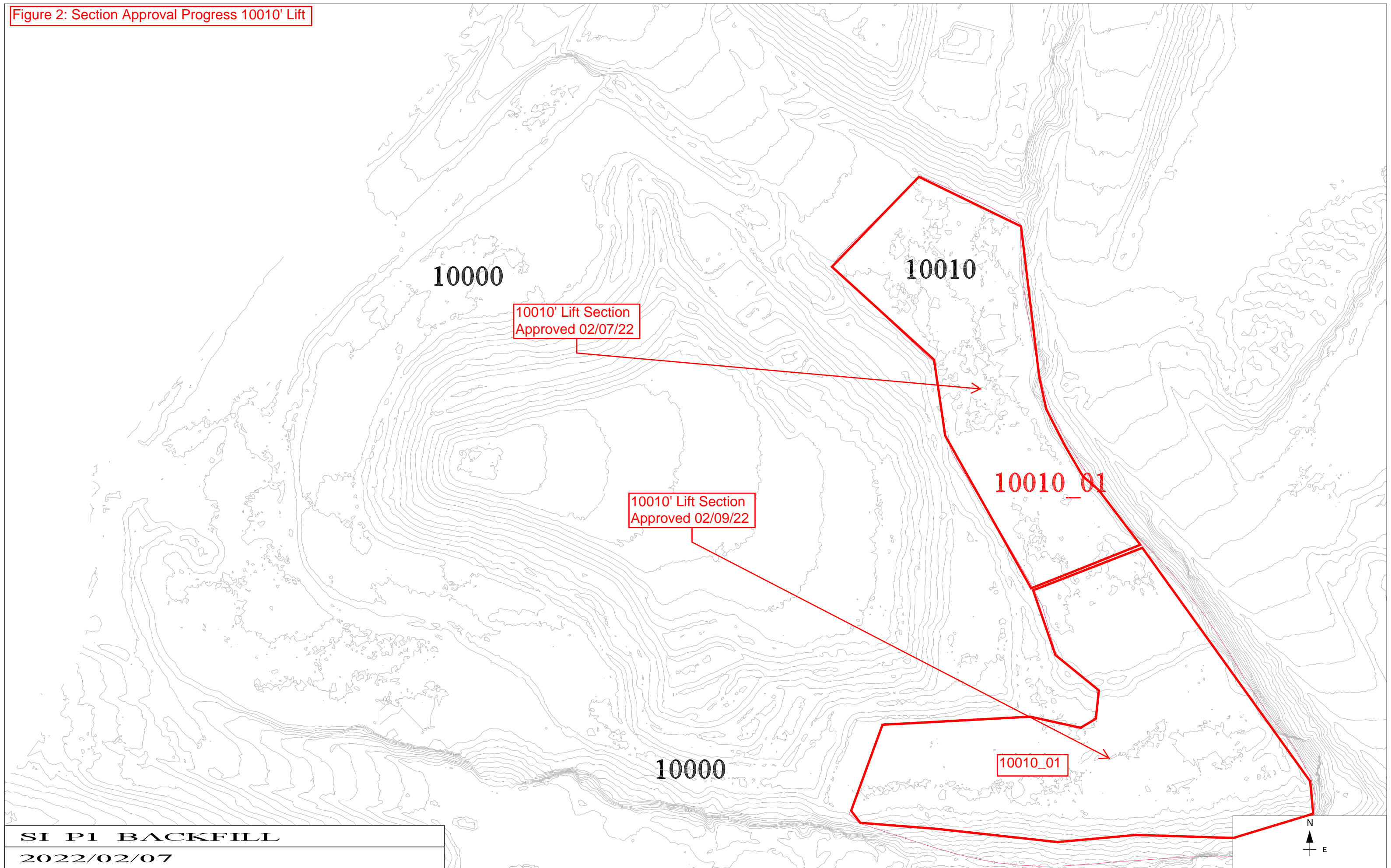
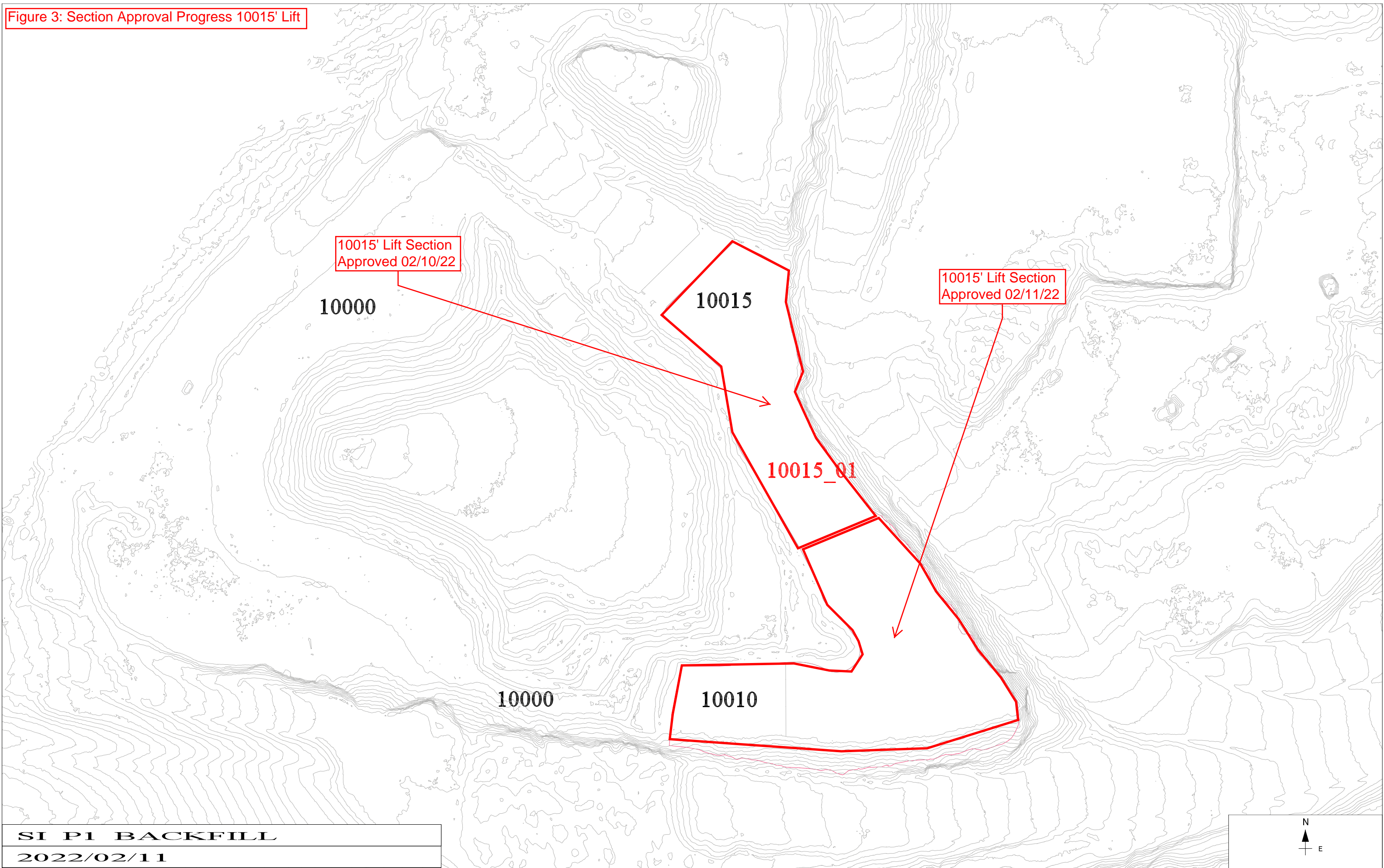




Figure 3: Section Approval Progress 10015' Lift



## ATTACHMENT 1

Newmont Mining Corporation  
 Cripple Creek & Victor Gold Mine  
 2022 Quality Assurance Oversight  
 NewFields Job No. 475.0106.056  
 Week Ending Friday, February 11, 2022



## FIELD WEEKLY PROGRESS REPORT

**PROJECT:** VALLEY LEACH FACILITY (VLF2) PHASE 3 CQA HIGH COMPACTION BACKFILL  
**SITE:** CRIPPLE CREEK & VICTOR GOLD MINE (COLORADO)  
**CONTRACTOR:** NEWMONT CC&V MINING OPERATIONS  
**WEEK ENDING:** FRIDAY, FEBRUARY 11, 2022

**REPORTING PERIOD: 02.05.2022 THROUGH 02.11.2022**

Days	Sat	Sun	Mon	Tue	Wed	Thu	Fri
Work Shifts	D/N	D/N	D/N	D/N	D/N	D/N	D/N
D – DAYSHIFT		N – NIGHTSHIFT			W – WEATHER		

### AMBIENT TEMPERATURE RANGES AND WEATHER CONDITIONS:

HIGHS: 44°F TO 24°F

LOWS: 26°F TO 1°F

CLOUD COVER: PARTLY TO MOSTLY CLOUDY

PRECIPITATION: NONE

WIND: WIND GUSTS FROM 10 TO 50 MPH

### NEWFIELDS PERSONNEL ONSITE:

Personnel	Sat	Sun	Mon	Tue	Wed	Thu	Fri
	Feb 5	Feb 6	Feb 7	Feb 8	Feb 9	Feb 10	Feb 11
Jay Moore	-	-	-	-	PCE	-	-
Roxanne Li	-	-	-	-	PR	-	-
Tyler Wendlandt	-	-	LS	LS	LS	LS	LS
George Fry	ST	-	-	-	-	-	-
PR – Project Resident; LS – Lead Soils Technician; LG – Lead Geosynthetics; ST – Soils Technician; GT – Geosynthetics Technician; LT – Laboratory Technician; PCE – Project Certifying Engineer							

## 1.0 MINING OPERATIONS

### 1.1 Schist Island High Compaction Back Fill

CC&V completed the placement of the 10005', 10010' and the 10015' elevation high compaction backfill lifts. CC&V began the placement of the 10020' elevation high compaction backfill lift. Run



of Mine material was loaded from the Schist Island Pit and West/South Cresson Pit and hauled by 793 haul trucks to the high compaction backfill. A D10 dozer placed material in a 5 foot GPS controlled leading edge lift. The haulage traffic travelled over the entirety of the fill, splitting tracks with each loaded haul truck. The D10 leveled out the windrows along the pit wall and pushed structural material into any surface irregularities along the pit wall.

CC&V shovel and loader operators monitored the Run of Mine material size being sent to the high compaction backfill. Out of specification loads containing 2 foot plus sized material were sent to the ECOSA stockpile. 2 foot plus sized material that was not removed at the dig-face by the shovel or loader operators was removed by a D10 dozer during material placement. The oversize material was stockpiled by the dozer out of the way above the current lift on the haul road against the pit high wall. A 993 loader loaded a 777 haul truck with the unsuitable material and it was then hauled to the ECOSA stockpile.

## **2.0 MEETINGS AND COMMUNICATIONS**

NewFields personnel met with Mine Operations Supervision about the high compaction backfill progress and material quality.

## **3.0 MISCELLANEOUS, ISSUES, AND CONCERNS**

- NewFields personnel completed the approval of the 10005', 10010', 10015' lift. Visual inspection and the method compaction specification were utilized to approve the lift.
- A progress map provided by Newmont CC&V was utilized to create the attached figures showing high compaction backfill progress.





## 4.0 PHOTOGRAPHS



**February 10, 2022 – High Compaction Backfill placement (TW)**



**February 11, 2022 – High Compaction Backfill wheel rolling (TW)**

Newmont Mining Corporation  
 Cripple Creek & Victor Gold Mine  
 2022 Quality Assurance Oversight  
 NewFields Job No. 475.0106.056  
 Week Ending Friday, February 11, 2022



**February 11, 2022 – High Compaction Backfill placement (TW)**

***Report Review and Approval:***

Role	Name	Signature
<b>CQA Monitor/Report Prepared By</b>	<b>Tyler Wendlandt</b>	
<b><i>Or CQA Designee</i></b>		
<b>Project Engineer</b>	<b>Jeff Gaul</b>	DocuSigned by:  1122B343C4A54DD...
<b><i>Or Projects Designee</i></b>		



Newmont Mining Corporation  
Cripple Creek & Victor Gold Mine  
2022 Quality Assurance Oversight  
NewFields Job No. 475.0106.056  
Week Ending Friday, February 11, 2022

---



**Attachments:**

Figure 1 – Section Approval Progress 10005' Lift (Map Date 02/4/22)

Figure 2 – Section Approval Progress 10010' Lift (Map Date 02/7/22)

Figure 3 – Section Approval Progress 10015' Lift (Map Date 02/11/22)

Figure 1: Section Approval Progress 10005' Lift

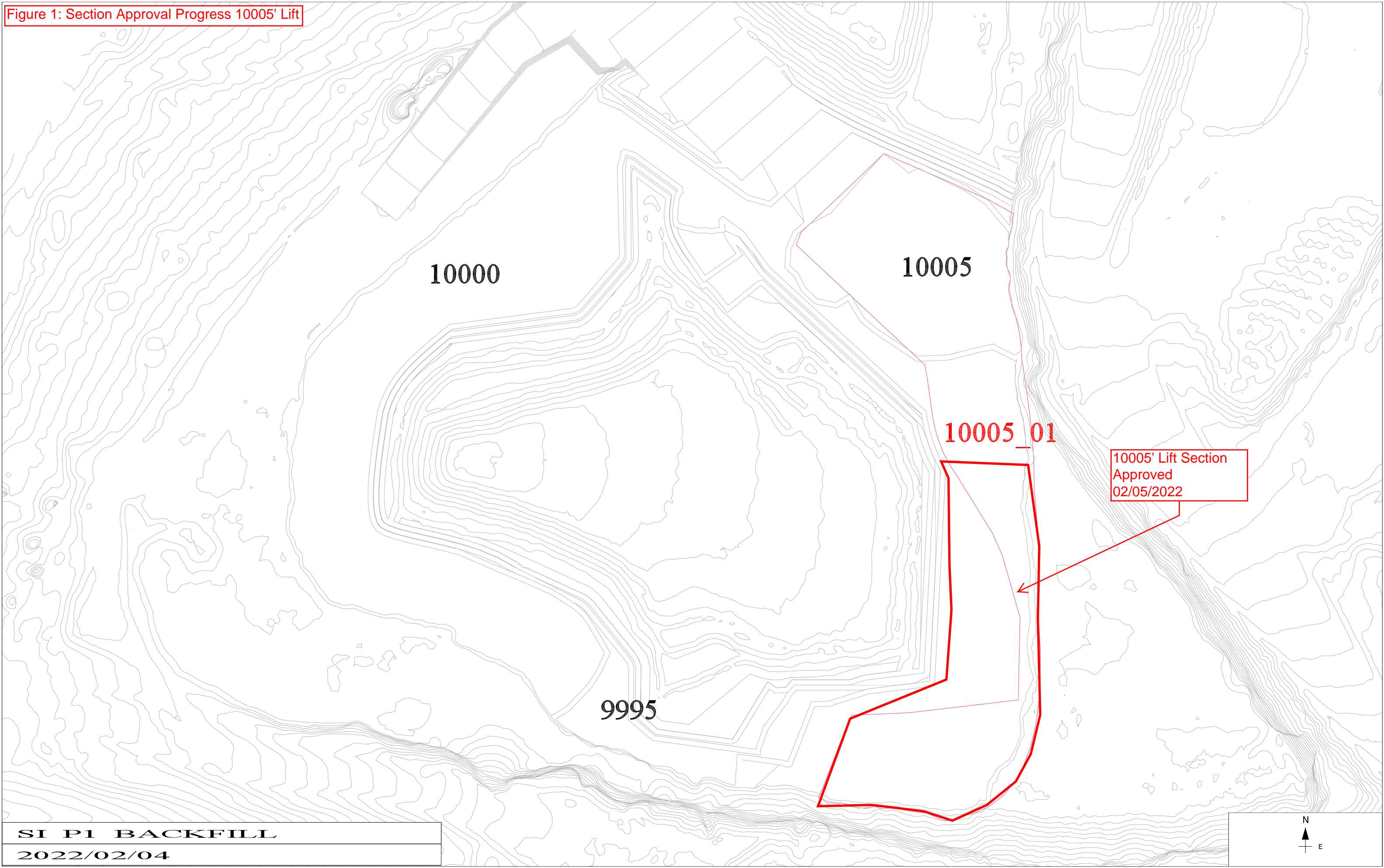




Figure 2: Section Approval Progress 10010' Lift

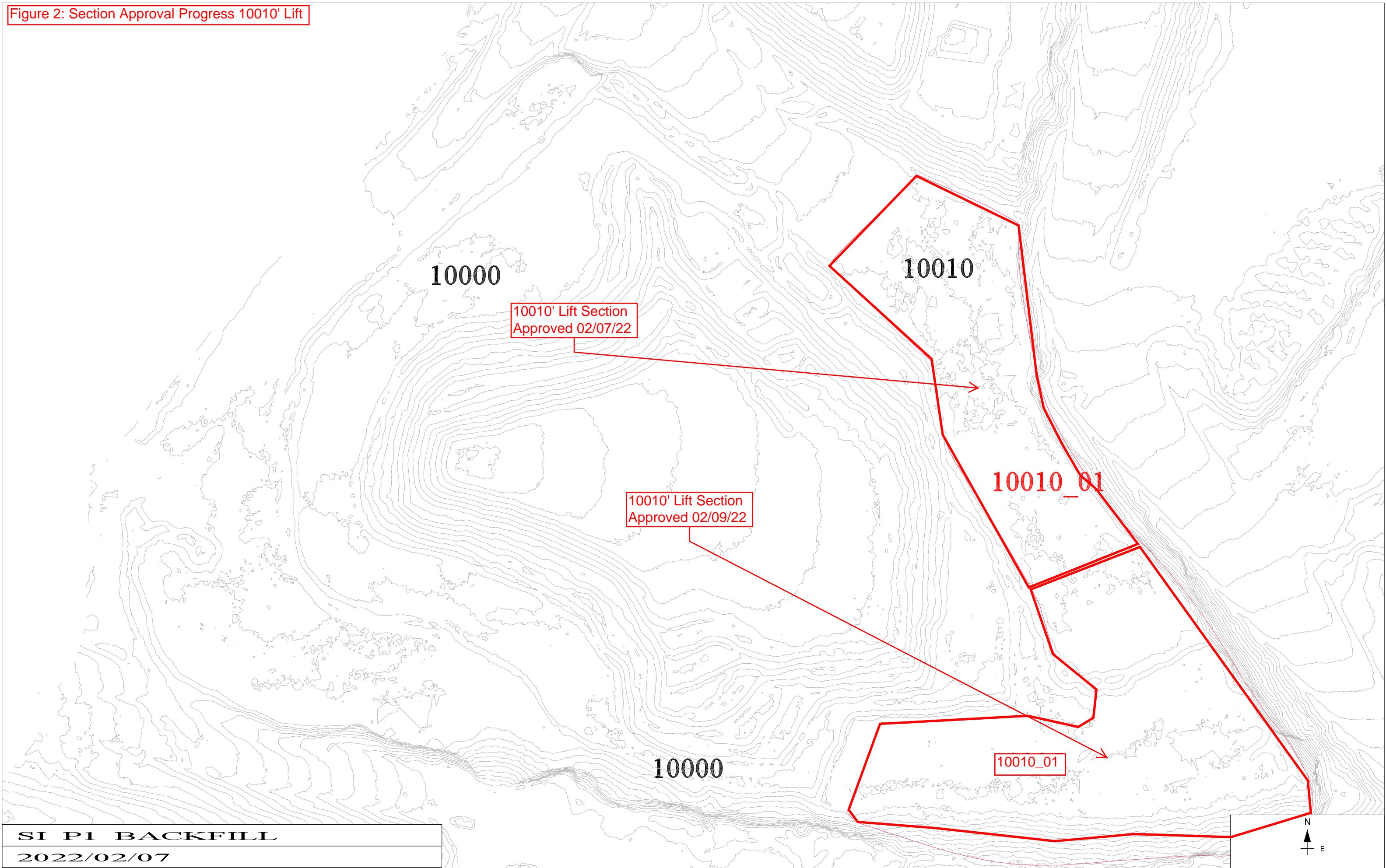




Figure 3: Section Approval Progress 10015' Lift

