



February 15, 2022

*Broken Arrow
Investments, LLC
801 8th Street, Suite 130
Greeley, CO 80631*

Mr. Eric Scott
Environmental Protection Specialist
State of Colorado
Division of Reclamation, Mining, & Safety
1313 Sherman Street – Room 215
Denver, CO 80203

*RE: Broken Arrow Investments, LLC – File No. M-2008-017 Derr Pit – Summary for February
Water Level Reporting*

Dear Mr. Scott,

Broken Arrow Investments, LLC is providing this summary letter to discuss and provide information in regard to the February off-site an on-site monitor wells and provide the dewatering volumes pumped for January.

During the month of January a total of 0.0 acre-feet was pumped and discharged into the on-site recharge ponds within the Derr Pit.

AgPro was able to get the normal monthly readings/measurements on all of the off-site wells for the February readings. No trigger levels were reached for any of the off-site wells that were measured. As discussed in our technical revision letter there are some on-site wells that were removed due to the slurry wall construction and those wells are no longer in place. Monitor Well 11 is now accessible and is in the interior (inside the slurry wall) of the pit. Most of on-site monitor wells saw an decrease in the elevation of the water levels. The water level elevations in the monitor wells on the Phase 1-4 portion of the pit went down on the south side by 0.37 feet and 0.18 on the north side. The water level elevations in the monitor wells on the upper terrace of the permit area decreased by 0.17 feet for MW-14, decreased by 0.03 feet for MW-15, decreased by 0.81 feet for MW-16, decreased by 0.05 feet for MW-17 and decreased by 0.02 feet for MW-18.

Please give me a call at (970) 566-5090 or send an e-mail to discuss further.

Sincerely,

Kelly Hodge
Broken Arrow Investments, LLC

Derr Pit Monitor Well Readings

Well Designation	MW-1			MW-2		
Top of Well (ft)	4631.38			4630.91		
Ground Elevation (ft)	4629.09			4629.78		
Date	Depth to Groundwater from Top of Well (ft)	Depth to Groundwater from Ground (ft)	Elevation of Groundwater (ft)	Depth to Groundwater from Top of Well (ft)	Depth to Groundwater from Ground (ft)	Elevation of Groundwater (ft)
September 26, 2018	16.73	14.44	4614.65	17.18	16.05	4613.73
October 26, 2018	17.06	14.77	4614.32	17.06	15.93	4613.85
November 20, 2018	17.14	14.85	4614.24	17.03	15.90	4613.88
December 18, 2018	17.38	15.09	4614.00	17.03	15.90	4613.88
January 17, 2019	17.72	15.43	4613.66	17.56	16.43	4613.35
February 12, 2019	18.10	15.81	4613.28	17.95	16.82	4612.96
March 7, 2019	18.30	16.01	4613.08	18.19	17.06	4612.72
April 22, 2019	27.66	25.37	4603.72	19.06	17.93	4611.85
May 14, 2019	22.31	20.02	4609.07	28.70	27.57	4602.21
June 21, 2019	14.60	12.31	4616.78	20.28	19.15	4610.63
July 24, 2019	16.41	14.12	4614.97	20.75	19.62	4610.16
August 21, 2019	17.99	15.70	4613.39	21.11	19.98	4609.80
September 17, 2019	not read	#VALUE!	#VALUE!	22.56	21.43	4608.35
October 17, 2019	18.50	16.21	4612.88	22.18	21.05	4608.73
November 13, 2019	18.46	16.17	4612.92	23.31	22.18	4607.60
December 10, 2019	not read	#VALUE!	#VALUE!	23.30	22.17	4607.61
January 9, 2020	not read	#VALUE!	#VALUE!	23.53	22.40	4607.38
February 12, 2020	not read	#VALUE!	#VALUE!	25.04	23.91	4605.87
March 12, 2020	not read	#VALUE!	#VALUE!	21.48	20.35	4609.43
April 9, 2020	not read	#VALUE!	#VALUE!	19.75	18.62	4611.16
May 14, 2020	not read	#VALUE!	#VALUE!	19.55	18.42	4611.36
June 11, 2020	not read	#VALUE!	#VALUE!	19.81	18.68	4611.10
July 9, 2020	not read	#VALUE!	#VALUE!	19.08	17.95	4611.83
August 13, 2020	not read	#VALUE!	#VALUE!	22.17	21.04	4608.74
September 10, 2020	not read	#VALUE!	#VALUE!	19.86	18.73	4611.05
October 8, 2020	not read	#VALUE!	#VALUE!	19.99	18.86	4610.92
November 12, 2020	not read	#VALUE!	#VALUE!	24.65	23.52	4606.26
December 10, 2020	not read	#VALUE!	#VALUE!	not read	#VALUE!	#VALUE!
January 14, 2021	not read	#VALUE!	#VALUE!	not read	#VALUE!	#VALUE!
February 12, 2021	not read	#VALUE!	#VALUE!	not read	#VALUE!	#VALUE!
March 11, 2021	not read	#VALUE!	#VALUE!	not read	#VALUE!	#VALUE!
April 8, 2021	not read	#VALUE!	#VALUE!	not read	#VALUE!	#VALUE!
May 13, 2021	not read	#VALUE!	#VALUE!	not read	#VALUE!	#VALUE!
June 10, 2021	17.05	14.76	4614.33	not read	#VALUE!	#VALUE!
July 8, 2021	17.70	15.41	4613.68	not read	#VALUE!	#VALUE!
August 12, 2021	19.16	16.87	4612.22	not read	#VALUE!	#VALUE!
September 9, 2021	19.45	17.16	4611.93	not read	#VALUE!	#VALUE!
October 14, 2021	20.50	18.21	4610.88	not read	#VALUE!	#VALUE!
November 12, 2021	20.00	17.71	4611.38	not read	#VALUE!	#VALUE!
December 9, 2021	20.12	17.83	4611.26	not read	#VALUE!	#VALUE!
January 13, 2022	not read	#VALUE!	#VALUE!	not read	#VALUE!	#VALUE!
February 9, 2022	20.11	17.82	4611.27	not read	#VALUE!	#VALUE!

Well Readings with a "not read" indicate the well has been damaged or removed due to its location being in conflict with the slurry wall construction

Derr Pit Monitor Well Readings

Well Designation	MW-3			MW-4			MW-6		
Top of Well (ft)	4631.38			4631.63			4633.36		
Ground Elevation (ft)	4629.04			4629.27			4631.13		
Date	Depth to Groundwater from Top of Well (ft)	Depth to Groundwater from Ground (ft)	Elevation of Groundwater (ft)	Depth to Groundwater from Top of Well (ft)	Depth to Groundwater from Ground (ft)	Elevation of Groundwater (ft)	Depth to Groundwater from Top of Well (ft)	Depth to Groundwater from Ground (ft)	Elevation of Groundwater (ft)
September 26, 2018	17.87	15.53	4613.51	15.73	13.37	4615.90	15.31	13.08	4618.05
October 26, 2018	17.67	15.33	4613.71	15.38	13.02	4616.25	14.89	12.66	4618.47
November 20, 2018	17.63	15.29	4613.75	15.34	12.98	4616.29	14.78	12.55	4618.58
December 18, 2018	17.63	15.29	4613.75	15.34	12.98	4616.29	14.78	12.55	4618.58
January 17, 2019	18.16	15.82	4613.22	15.74	13.38	4615.89	15.13	12.90	4618.23
February 12, 2019	18.58	16.24	4612.80	16.11	13.75	4615.52	15.49	13.26	4617.87
March 7, 2019	18.79	16.45	4612.59	25.46	23.10	4606.17	15.74	13.51	4617.62
April 22, 2019	19.46	17.12	4611.92	17.02	14.66	4614.61	16.34	14.11	4617.02
May 14, 2019	20.22	17.88	4611.16	18.63	16.27	4613.00	17.63	15.40	4615.73
June 21, 2019	20.65	18.31	4610.73	20.40	18.04	4611.23	18.55	16.32	4614.81
July 24, 2019	20.92	18.58	4610.46	20.49	18.13	4611.14	18.61	16.38	4614.75
August 21, 2019	21.28	18.94	4610.10	20.63	18.27	4611.00	18.95	16.72	4614.41
September 17, 2019	22.57	20.23	4608.81	22.74	20.38	4608.89	19.54	17.31	4613.82
October 17, 2019	22.36	20.02	4609.02	22.27	19.91	4609.36	20.00	17.77	4613.36
November 13, 2019	23.28	20.94	4608.10	23.18	20.82	4608.45	20.30	18.07	4613.06
December 10, 2019	23.32	20.98	4608.06	23.07	20.71	4608.56	20.28	18.05	4613.08
January 9, 2020	23.63	21.29	4607.75	23.25	20.89	4608.38	20.48	18.25	4612.88
February 12, 2020	25.82	23.48	4605.56	25.90	23.54	4605.73	21.77	19.54	4611.59
March 12, 2020	22.30	19.96	4609.08	21.05	18.69	4610.58	19.72	17.49	4613.64
April 9, 2020	20.65	18.31	4610.73	19.32	16.96	4612.31	18.00	15.77	4615.36
May 14, 2020	20.40	18.06	4610.98	19.03	16.67	4612.60	17.72	15.49	4615.64
June 11, 2020	20.41	18.07	4610.97	19.28	16.92	4612.35	17.52	15.29	4615.84
July 9, 2020	19.84	17.50	4611.54	not read	#VALUE!	#VALUE!	17.23	15.00	4616.13
August 13, 2020	21.03	18.69	4610.35	not read	#VALUE!	#VALUE!	18.62	16.39	4614.74
September 10, 2020	20.43	18.09	4610.95	not read	#VALUE!	#VALUE!	17.95	15.72	4615.41
October 8, 2020	20.39	18.05	4610.99	not read	#VALUE!	#VALUE!	17.54	15.31	4615.82
November 12, 2020	23.15	20.81	4608.23	not read	#VALUE!	#VALUE!	18.26	16.03	4615.10
December 10, 2020	23.77	21.43	4607.61	not read	#VALUE!	#VALUE!	not read	#VALUE!	#VALUE!
January 14, 2021	23.72	21.38	4607.66	not read	#VALUE!	#VALUE!	not read	#VALUE!	#VALUE!
February 12, 2021	24.02	21.68	4607.36	not read	#VALUE!	#VALUE!	not read	#VALUE!	#VALUE!
March 11, 2021	22.42	20.08	4608.96	not read	#VALUE!	#VALUE!	not read	#VALUE!	#VALUE!
April 8, 2021	22.90	20.56	4608.48	not read	#VALUE!	#VALUE!	not read	#VALUE!	#VALUE!
May 13, 2021	22.00	19.66	4609.38	not read	#VALUE!	#VALUE!	not read	#VALUE!	#VALUE!
June 10, 2021	20.30	17.96	4611.08	not read	#VALUE!	#VALUE!	not read	#VALUE!	#VALUE!
July 8, 2021	21.00	18.66	4610.38	not read	#VALUE!	#VALUE!	not read	#VALUE!	#VALUE!
August 12, 2021	20.68	18.34	4610.70	not read	#VALUE!	#VALUE!	not read	#VALUE!	#VALUE!
September 9, 2021	22.71	20.37	4608.67	not read	#VALUE!	#VALUE!	not read	#VALUE!	#VALUE!
October 14, 2021	23.00	20.66	4608.38	not read	#VALUE!	#VALUE!	not read	#VALUE!	#VALUE!
November 12, 2021	22.85	20.51	4608.53	not read	#VALUE!	#VALUE!	not read	#VALUE!	#VALUE!
December 9, 2021	23.13	20.79	4608.25	not read	#VALUE!	#VALUE!	not read	#VALUE!	#VALUE!
January 13, 2022	23.22	20.88	4608.16	not read	#VALUE!	#VALUE!	not read	#VALUE!	#VALUE!
February 9, 2022	23.59	21.25	4607.79	not read	#VALUE!	#VALUE!	not read	#VALUE!	#VALUE!

Well Readings with a "not read" indicate the well has been damaged or removed due to its location being in conflict with the slurry wall construction

Derr Pit Monitor Well Readings

Well Designation	MW-7			MW-8			MW-9		
Top of Well (ft)	4635.60			4635.24			4634.02		
Ground Elevation (ft)	4633.04			4632.76			4631.72		
Date	Depth to Groundwater from Top of Well (ft)	Depth to Groundwater from Ground (ft)	Elevation of Groundwater (ft)	Depth to Groundwater from Top of Well (ft)	Depth to Groundwater from Ground (ft)	Elevation of Groundwater (ft)	Depth to Groundwater from Top of Well (ft)	Depth to Groundwater from Ground (ft)	Elevation of Groundwater (ft)
September 26, 2018	not read	#VALUE!	#VALUE!	18.07	15.59	4617.17	15.74	13.44	4618.28
October 26, 2018	16.57	14.01	4619.03	17.79	15.31	4617.45	15.32	13.02	4618.70
November 20, 2018	16.43	13.87	4619.17	17.71	15.23	4617.53	15.21	12.91	4618.81
December 18, 2018	16.43	13.87	4619.17	17.71	15.23	4617.53	15.21	12.91	4618.81
January 17, 2019	16.75	14.19	4618.85	18.09	15.61	4617.15	15.56	13.26	4618.46
February 12, 2019	17.11	14.55	4618.49	18.44	15.96	4616.80	15.92	13.62	4618.10
March 7, 2019	17.34	14.78	4618.26	18.65	16.17	4616.59	16.13	13.83	4617.89
April 22, 2019	17.91	15.35	4617.69	19.27	16.79	4615.97	16.75	14.45	4617.27
May 14, 2019	18.71	16.15	4616.89	19.91	17.43	4615.33	25.56	23.26	4608.46
June 21, 2019	19.42	16.86	4616.18	20.73	18.25	4614.51	18.53	16.23	4615.49
July 24, 2019	19.42	16.86	4616.18	20.90	18.42	4614.34	18.77	16.47	4615.25
August 21, 2019	19.85	17.29	4615.75	21.41	18.93	4613.83	19.16	16.86	4614.86
September 17, 2019	20.38	17.82	4615.22	22.27	19.79	4612.97	19.75	17.45	4614.27
October 17, 2019	20.71	18.15	4614.89	22.51	20.03	4612.73	19.96	17.66	4614.06
November 13, 2019	21.05	18.49	4614.55	23.01	20.53	4612.23	20.28	17.98	4613.74
December 10, 2019	21.01	18.45	4614.59	22.97	20.49	4612.27	20.26	17.96	4613.76
January 9, 2020	21.23	18.67	4614.37	23.21	20.73	4612.03	20.50	18.20	4613.52
February 12, 2020	22.31	19.75	4613.29	24.46	21.98	4610.78	21.70	19.40	4612.32
March 12, 2020	20.67	18.11	4614.93	22.20	19.72	4613.04	19.75	17.45	4614.27
April 9, 2020	19.53	16.97	4616.07	20.78	18.30	4614.46	18.41	16.11	4615.61
May 14, 2020	19.12	16.56	4616.48	20.43	17.95	4614.81	18.02	15.72	4616.00
June 11, 2020	18.82	16.26	4616.78	20.29	17.81	4614.95	17.79	15.49	4616.23
July 9, 2020	18.54	15.98	4617.06	19.88	17.40	4615.36	17.56	15.26	4616.46
August 13, 2020	20.16	17.60	4615.44	21.99	19.51	4613.25	19.16	16.86	4614.86
September 10, 2020	19.30	16.74	4616.30	20.58	18.10	4614.66	18.29	15.99	4615.73
October 8, 2020	18.95	16.39	4616.65	20.30	17.82	4614.94	Broken not read	#VALUE!	#VALUE!
November 12, 2020	19.80	17.24	4615.80	21.52	19.04	4613.72	Broken not read	#VALUE!	#VALUE!
December 10, 2020	19.43	16.87	4616.17	not read	#VALUE!	#VALUE!	Broken not read	#VALUE!	#VALUE!
January 14, 2021	20.47	17.91	4615.13	not read	#VALUE!	#VALUE!	Broken not read	#VALUE!	#VALUE!
February 12, 2021	22.06	19.50	4613.54	not read	#VALUE!	#VALUE!	Broken not read	#VALUE!	#VALUE!
March 11, 2021	23.51	20.95	4612.09	not read	#VALUE!	#VALUE!	Broken not read	#VALUE!	#VALUE!
April 8, 2021	24.06	21.50	4611.54	not read	#VALUE!	#VALUE!	Broken not read	#VALUE!	#VALUE!
May 13, 2021	23.79	21.23	4611.81	not read	#VALUE!	#VALUE!	Broken not read	#VALUE!	#VALUE!
June 10, 2021	23.86	21.30	4611.74	not read	#VALUE!	#VALUE!	Broken not read	#VALUE!	#VALUE!
July 8, 2021	22.85	20.29	4612.75	not read	#VALUE!	#VALUE!	Broken not read	#VALUE!	#VALUE!
August 12, 2021	23.40	20.84	4612.20	not read	#VALUE!	#VALUE!	Broken not read	#VALUE!	#VALUE!
September 9, 2021	16.19	13.63	4619.41	not read	#VALUE!	#VALUE!	Broken not read	#VALUE!	#VALUE!
October 14, 2021	15.10	12.54	4620.50	not read	#VALUE!	#VALUE!	Broken not read	#VALUE!	#VALUE!
November 12, 2021	14.70	12.14	4620.90	not read	#VALUE!	#VALUE!	Broken not read	#VALUE!	#VALUE!
December 9, 2021	14.47	11.91	4621.13	not read	#VALUE!	#VALUE!	Broken not read	#VALUE!	#VALUE!
January 13, 2022	14.47	11.91	4621.13	not read	#VALUE!	#VALUE!	Broken not read	#VALUE!	#VALUE!
February 9, 2022	14.65	12.09	4620.95	not read	#VALUE!	#VALUE!	Broken not read	#VALUE!	#VALUE!

Well Readings with a "not read" indicate the well has been damaged or removed due to its location being in conflict with the slurry wall construction

Derr Pit Monitor Well Readings

Well Designation	MW-10			MW-11			MW-12		
Top of Well (ft)	4632.11			4630.46			4631.20		
Ground Elevation (ft)	4630.34			4628.05			4629.03		
Date	Depth to Groundwater from Top of Well (ft)	Depth to Groundwater from Ground (ft)	Elevation of Groundwater (ft)	Depth to Groundwater from Top of Well (ft)	Depth to Groundwater from Ground (ft)	Elevation of Groundwater (ft)	Depth to Groundwater from Top of Well (ft)	Depth to Groundwater from Ground (ft)	Elevation of Groundwater (ft)
September 26, 2018	14.75	12.98	4617.36	14.21	11.80	4616.25	16.58	14.41	4614.62
October 26, 2018	13.89	12.12	4618.22	13.89	11.48	4616.57	16.51	14.34	4614.69
November 20, 2018	14.25	12.48	4617.86	13.80	11.39	4616.66	16.49	14.32	4614.71
December 18, 2018	14.25	12.48	4617.86	13.80	11.39	4616.66	16.49	14.32	4614.71
January 17, 2019	14.60	12.83	4617.51	14.22	11.81	4616.24	16.95	14.78	4614.25
February 12, 2019	14.98	13.21	4617.13	14.58	12.17	4615.88	17.33	15.16	4613.87
March 7, 2019	24.30	22.53	4607.81	14.81	12.40	4615.65	17.54	15.37	4613.66
April 22, 2019	15.85	14.08	4616.26	15.55	13.14	4614.91	18.03	15.86	4613.17
May 14, 2019	26.60	24.83	4605.51	16.70	14.29	4613.76	27.43	25.26	4603.77
June 21, 2019	18.67	16.90	4613.44	17.87	15.46	4612.59	19.09	16.92	4612.11
July 24, 2019	18.79	17.02	4613.32	18.04	15.63	4612.42	19.62	17.45	4611.58
August 21, 2019	19.10	17.33	4613.01	18.45	16.04	4612.01	20.23	18.06	4610.97
September 17, 2019	19.87	18.10	4612.24	19.61	17.20	4610.85	21.61	19.44	4609.59
October 17, 2019	20.48	18.71	4611.63	19.79	17.38	4610.67	21.31	19.14	4609.89
November 13, 2019	20.82	19.05	4611.29	20.36	17.95	4610.10	22.43	20.26	4608.77
December 10, 2019	20.78	19.01	4611.33	20.30	17.89	4610.16	22.41	20.24	4608.79
January 9, 2020	20.95	19.18	4611.16	20.52	18.11	4609.94	22.67	20.50	4608.53
February 12, 2020	22.46	20.69	4609.65	22.41	20.00	4608.05	24.09	21.92	4607.11
March 12, 2020	19.95	18.18	4612.16	19.04	16.63	4611.42	20.78	18.61	4610.42
April 9, 2020	17.02	15.25	4615.09	17.22	14.81	4613.24	19.22	17.05	4611.98
May 14, 2020	17.30	15.53	4614.81	not read	#VALUE!	#VALUE!	not read	#VALUE!	#VALUE!
June 11, 2020	17.22	15.45	4614.89	not read	#VALUE!	#VALUE!	not read	#VALUE!	#VALUE!
July 9, 2020	not read	#VALUE!	#VALUE!	not read	#VALUE!	#VALUE!	not read	#VALUE!	#VALUE!
August 13, 2020	not read	#VALUE!	#VALUE!	not read	#VALUE!	#VALUE!	not read	#VALUE!	#VALUE!
September 10, 2020	not read	#VALUE!	#VALUE!	not read	#VALUE!	#VALUE!	not read	#VALUE!	#VALUE!
October 8, 2020	not read	#VALUE!	#VALUE!	not read	#VALUE!	#VALUE!	not read	#VALUE!	#VALUE!
November 12, 2020	not read	#VALUE!	#VALUE!	not read	#VALUE!	#VALUE!	not read	#VALUE!	#VALUE!
December 10, 2020	not read	#VALUE!	#VALUE!	not read	#VALUE!	#VALUE!	not read	#VALUE!	#VALUE!
January 14, 2021	not read	#VALUE!	#VALUE!	not read	#VALUE!	#VALUE!	not read	#VALUE!	#VALUE!
February 12, 2021	not read	#VALUE!	#VALUE!	not read	#VALUE!	#VALUE!	not read	#VALUE!	#VALUE!
March 11, 2021	not read	#VALUE!	#VALUE!	not read	#VALUE!	#VALUE!	not read	#VALUE!	#VALUE!
April 8, 2021	not read	#VALUE!	#VALUE!	not read	#VALUE!	#VALUE!	not read	#VALUE!	#VALUE!
May 13, 2021	not read	#VALUE!	#VALUE!	not read	#VALUE!	#VALUE!	not read	#VALUE!	#VALUE!
June 10, 2021	not read	#VALUE!	#VALUE!	not read	#VALUE!	#VALUE!	not read	#VALUE!	#VALUE!
July 8, 2021	not read	#VALUE!	#VALUE!	not read	#VALUE!	#VALUE!	not read	#VALUE!	#VALUE!
August 12, 2021	not read	#VALUE!	#VALUE!	not read	#VALUE!	#VALUE!	not read	#VALUE!	#VALUE!
September 9, 2021	not read	#VALUE!	#VALUE!	33.82	31.41	4596.64	not read	#VALUE!	#VALUE!
October 14, 2021	not read	#VALUE!	#VALUE!	35.70	33.29	4594.76	not read	#VALUE!	#VALUE!
November 12, 2021	not read	#VALUE!	#VALUE!	35.92	33.51	4594.54	not read	#VALUE!	#VALUE!
December 9, 2021	not read	#VALUE!	#VALUE!	35.80	33.39	4594.66	not read	#VALUE!	#VALUE!
January 13, 2022	not read	#VALUE!	#VALUE!	35.80	33.39	4594.66	not read	#VALUE!	#VALUE!
February 9, 2022	not read	#VALUE!	#VALUE!	35.61	33.20	4594.85	not read	#VALUE!	#VALUE!

Well Readings with a "not read" indicate the well has been damaged or removed due to its location being in conflict with the slurry wall construction

Derr Pit Monitor Well Readings

Well Designation	MW-13			MW-14			MW-15		
Top of Well (ft)	4631.38			4660.59			4660.36		
Ground Elevation (ft)	4628.59			4659.55			4657.92		
Date	Depth to Groundwater from Top of Well (ft)	Depth to Groundwater from Ground (ft)	Elevation of Groundwater (ft)	Depth to Groundwater from Top of Well (ft)	Depth to Groundwater from Ground (ft)	Elevation of Groundwater (ft)	Depth to Groundwater from Top of Well (ft)	Depth to Groundwater from Ground (ft)	Elevation of Groundwater (ft)
September 26, 2018	17.42	14.63	4613.96	49.19	48.15	4611.40	41.59	39.15	4618.77
October 26, 2018	17.21	14.42	4614.17	45.97	44.93	4614.62	41.11	38.67	4619.25
November 20, 2018	17.18	14.39	4614.20	45.90	44.86	4614.69	43.01	40.57	4617.35
December 18, 2018	26.48	23.69	4604.90	45.90	44.86	4614.69	43.01	40.57	4617.35
January 17, 2019	17.70	14.91	4613.68	46.37	45.33	4614.22	41.37	38.93	4618.99
February 12, 2019	18.08	15.29	4613.30	46.75	45.71	4613.84	41.71	39.27	4618.65
March 7, 2019	18.32	15.53	4613.06	46.99	45.95	4613.60	51.07	48.63	4609.29
April 22, 2019	19.18	16.39	4612.20	47.61	46.57	4612.98	42.55	40.11	4617.81
May 14, 2019	29.09	26.30	4602.29	48.44	47.40	4612.15	43.49	41.05	4616.87
June 21, 2019	20.87	18.08	4610.51	49.02	47.98	4611.57	43.61	41.17	4616.75
July 24, 2019	21.17	18.38	4610.21	50.15	49.11	4610.44	44.31	41.87	4616.05
August 21, 2019	21.39	18.60	4609.99	49.56	48.52	4611.03	44.71	42.27	4615.65
September 17, 2019	22.97	20.18	4608.41	50.66	49.62	4609.93	45.08	42.64	4615.28
October 17, 2019	22.55	19.76	4608.83	50.65	49.61	4609.94	45.40	42.96	4614.96
November 13, 2019	23.62	20.83	4607.76	50.65	49.61	4609.94	45.64	43.20	4614.72
December 10, 2019	23.62	20.83	4607.76	51.25	50.21	4609.34	45.57	43.13	4614.79
January 9, 2020	23.87	21.08	4607.51	51.59	50.55	4609.00	45.63	43.19	4614.73
February 12, 2020	25.89	23.10	4605.49	53.60	52.56	4606.99	46.98	44.54	4613.38
March 12, 2020	21.90	19.11	4609.48	50.60	49.56	4609.99	45.42	42.98	4614.94
April 9, 2020	20.12	17.33	4611.26	49.21	48.17	4611.38	44.25	41.81	4616.11
May 14, 2020	not read	#VALUE!	#VALUE!	48.82	47.78	4611.77	43.85	41.41	4616.51
June 11, 2020	not read	#VALUE!	#VALUE!	48.69	47.65	4611.90	43.53	41.09	4616.83
July 9, 2020	not read	#VALUE!	#VALUE!	48.25	47.21	4612.34	43.38	40.94	4616.98
August 13, 2020	not read	#VALUE!	#VALUE!	49.29	48.25	4611.30	44.61	42.17	4615.75
September 10, 2020	not read	#VALUE!	#VALUE!	48.91	47.87	4611.68	44.10	41.66	4616.26
October 8, 2020	not read	#VALUE!	#VALUE!	48.68	47.64	4611.91	43.53	41.09	4616.83
November 12, 2020	not read	#VALUE!	#VALUE!	49.63	48.59	4610.96	43.72	41.28	4616.64
December 10, 2020	not read	#VALUE!	#VALUE!	49.74	48.70	4610.85	43.13	40.69	4617.23
January 14, 2021	not read	#VALUE!	#VALUE!	49.26	48.22	4611.33	42.31	39.87	4618.05
February 12, 2021	not read	#VALUE!	#VALUE!	49.45	48.41	4611.14	42.69	40.25	4617.67
March 11, 2021	not read	#VALUE!	#VALUE!	48.89	47.85	4611.70	43.10	40.66	4617.26
April 8, 2021	not read	#VALUE!	#VALUE!	49.25	48.21	4611.34	43.44	41.00	4616.92
May 13, 2021	not read	#VALUE!	#VALUE!	49.11	48.07	4611.48	43.70	41.26	4616.66
June 10, 2021	not read	#VALUE!	#VALUE!	48.09	47.05	4612.50	43.29	40.85	4617.07
July 8, 2021	not read	#VALUE!	#VALUE!	47.53	46.49	4613.06	42.70	40.26	4617.66
August 12, 2021	not read	#VALUE!	#VALUE!	48.25	47.21	4612.34	43.50	41.06	4616.86
September 9, 2021	not read	#VALUE!	#VALUE!	49.09	48.05	4611.50	42.33	39.89	4618.03
October 14, 2021	not read	#VALUE!	#VALUE!	48.60	47.56	4611.99	42.10	39.66	4618.26
November 12, 2021	not read	#VALUE!	#VALUE!	48.56	47.52	4612.03	41.46	39.02	4618.90
December 9, 2021	not read	#VALUE!	#VALUE!	48.28	47.24	4612.31	40.28	37.84	4620.08
January 13, 2022	not read	#VALUE!	#VALUE!	48.52	47.48	4612.07	40.47	38.03	4619.89
February 9, 2022	not read	#VALUE!	#VALUE!	48.69	47.65	4611.90	40.50	38.06	4619.86

Well Readings with a "not read" indicate the well has been damaged or removed due to its location being in conflict with the slurry wall construction

Derr Pit Monitor Well Readings

Well Designation	MW-16			MW-17			MW-18		
Top of Well (ft)	4656.19			4663.63			4667.49		
Ground Elevation (ft)	4653.45			4660.53			4664.55		
Date	Depth to Groundwater from Top of Well (ft)	Depth to Groundwater from Ground (ft)	Elevation of Groundwater (ft)	Depth to Groundwater from Top of Well (ft)	Depth to Groundwater from Ground (ft)	Elevation of Groundwater (ft)	Depth to Groundwater from Top of Well (ft)	Depth to Groundwater from Ground (ft)	Elevation of Groundwater (ft)
September 26, 2018									
October 26, 2018									
November 20, 2018									
December 18, 2018									
January 17, 2019									
February 12, 2019									
March 7, 2019									
April 22, 2019									
May 14, 2019									
June 21, 2019									
July 24, 2019									
August 21, 2019	43.63	40.89	4612.56	47.00	43.90	4616.63	46.38	43.44	4621.11
September 17, 2019	44.44	41.70	4611.75	46.95	43.85	4616.68	46.52	43.58	4620.97
October 17, 2019	44.52	41.78	4611.67	46.59	43.49	4617.04	46.61	43.67	4620.88
November 13, 2019	44.87	42.13	4611.32	46.75	43.65	4616.88	46.74	43.80	4620.75
December 10, 2019	44.91	42.17	4611.28	46.80	43.70	4616.83	46.73	43.79	4620.76
January 9, 2020	45.30	42.56	4610.89	47.16	44.06	4616.47	46.95	44.01	4620.54
February 12, 2020	46.53	43.79	4609.66	47.87	44.77	4615.76	47.54	44.60	4619.95
March 12, 2020	45.22	42.48	4610.97	47.68	44.58	4615.95	47.32	44.38	4620.17
April 9, 2020	44.38	41.64	4611.81	47.31	44.21	4616.32	46.97	44.03	4620.52
May 14, 2020	43.90	41.16	4612.29	47.00	43.90	4616.63	46.63	43.69	4620.86
June 11, 2020	43.50	40.76	4612.69	46.52	43.42	4617.11	46.15	43.21	4621.34
July 9, 2020	43.33	40.59	4612.86	48.89	45.79	4614.74	46.14	43.20	4621.35
August 13, 2020	44.61	41.87	4611.58	48.41	45.31	4615.22	47.21	44.27	4620.28
September 10, 2020	44.25	41.51	4611.94	47.56	44.46	4616.07	46.85	43.91	4620.64
October 8, 2020	43.56	40.82	4612.63	46.27	43.17	4617.36	46.05	43.11	4621.44
November 12, 2020	43.85	41.11	4612.34	46.19	43.09	4617.44	46.06	43.12	4621.43
December 10, 2020	44.03	41.29	4612.16	46.22	43.12	4617.41	45.91	42.97	4621.58
January 14, 2021	43.68	40.94	4612.51	46.09	42.99	4617.54	45.67	42.73	4621.82
February 12, 2021	43.84	41.10	4612.35	46.23	43.13	4617.40	45.95	43.01	4621.54
March 11, 2021	43.65	40.91	4612.54	46.43	43.33	4617.20	46.33	43.39	4621.16
April 8, 2021	43.96	41.22	4612.23	46.69	43.59	4616.94	46.65	43.71	4620.84
May 13, 2021	43.49	40.75	4612.70	47.01	43.91	4616.62	46.87	43.93	4620.62
June 10, 2021	43.16	40.42	4613.03	46.50	43.40	4617.13	46.56	43.62	4620.93
July 8, 2021	42.71	39.97	4613.48	46.10	43.00	4617.53	46.00	43.06	4621.49
August 12, 2021	43.45	40.71	4612.74	47.70	44.60	4615.93	46.95	44.01	4620.54
September 9, 2021	43.94	41.20	4612.25	47.70	44.60	4615.93	46.28	43.34	4621.21
October 14, 2021	43.02	40.28	4613.17	45.65	42.55	4617.98	46.05	43.11	4621.44
November 12, 2021	42.59	39.85	4613.60	45.14	42.04	4618.49	45.44	42.50	4622.05
December 9, 2021	42.57	39.83	4613.62	45.00	41.90	4618.63	44.21	41.27	4623.28
January 13, 2022	42.21	39.47	4613.98	45.31	42.21	4618.32	44.46	41.52	4623.03
February 9, 2022	43.02	40.28	4613.17	45.36	42.26	4618.27	44.48	41.54	4623.01

Well Readings with a "not read" indicate the well has been damaged or removed due to its location being in conflict with the slurry wall construction

February 10, 2022

Mr. Dave Bliss
13165 E County Line Road
Longmont, CO 80504

Dear Mr. Bliss:

AGPROfessionals' staff have been monitoring groundwater elevations on behalf of Mill Iron at your property. We perform this monitoring on the second Thursday of each month. Attached is the elevation we recorded on February 9, 2022.

Identifier	Depth to Water from Ground Surface
Bliss Irr	46.40

Has the 2-foot trigger point for two consecutive months been met?

☐ Yes

☒ No

Please find the attached tables and graphs representing the data collected to this date. Please do not hesitate to contact me regarding these activities.

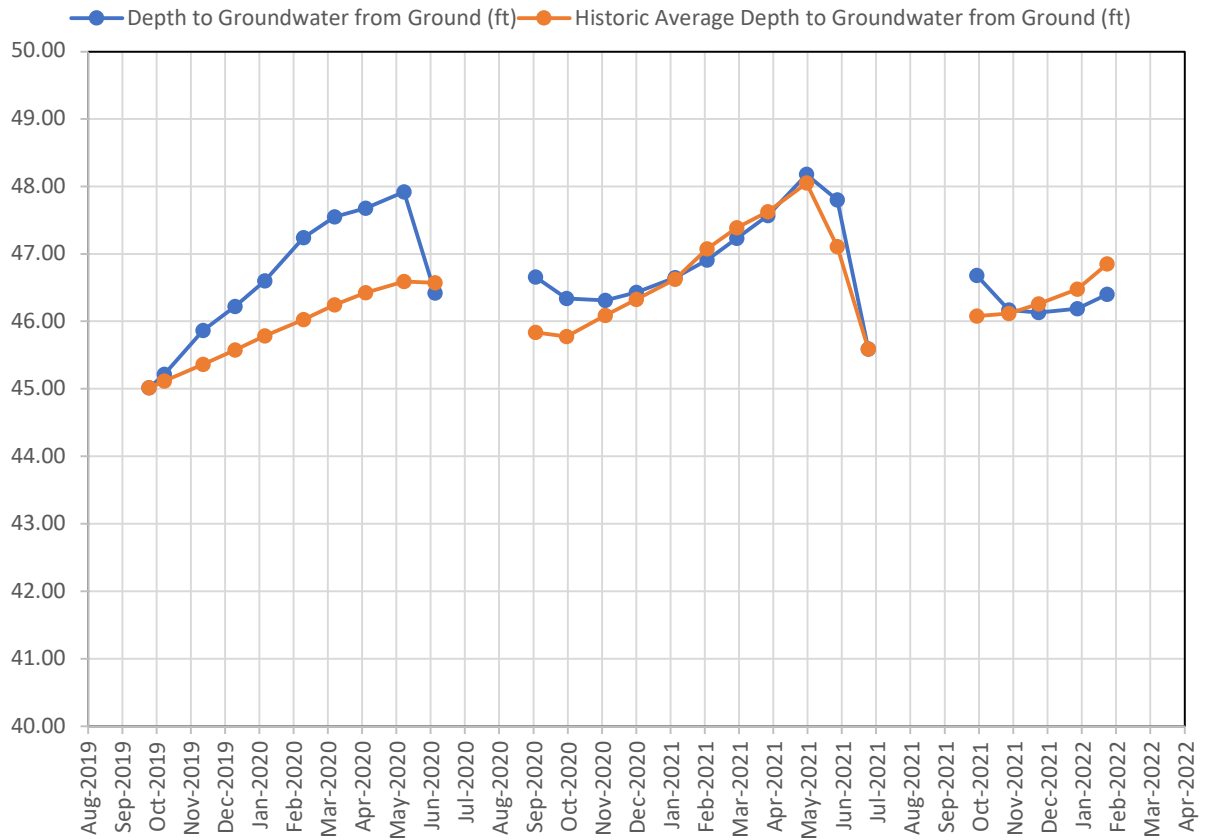
Sincerely,



Joey Smith
AGPROfessionals
970-571-4146

Well Designation		Bliss Irr
Date	Depth to Groundwater from Ground (ft)	Trigger Level of 2 feet below Historic Average Level Met (Yes or No) Start in May 2020
September 26, 2019	45.01	
October 10, 2019	45.21	
November 14, 2019	45.86	
December 13, 2019	46.22	
January 9, 2020	46.60	
February 13, 2020	47.24	
March 12, 2020	47.55	
April 9, 2020	47.68	
May 14, 2020	47.92	No
June 11, 2020	46.42	No
July 9, 2020		No
August 13, 2020		No
September 10, 2020	46.66	No
October 8, 2020	46.34	No
November 12, 2020	46.31	No
December 10, 2020	46.43	No
January 14, 2021	46.65	No
February 12, 2021	46.91	No
March 11, 2021	47.23	No
April 8, 2021	47.57	No
May 13, 2021	48.18	No
June 10, 2021	47.80	No
July 8, 2021	45.59	No
August 12, 2021		No
September 9, 2021		No
October 14, 2021	46.68	No
November 11, 2021	46.17	No
December 9, 2021	46.13	No
January 13, 2022	46.19	No
February 9, 2022	46.40	No

BLISS IRR



Notes:

1. Graph displays Depth to Groundwater (lower depth to groundwater means higher water table elevation).
2. Trigger point is described in Settlement Agreement.
3. Since Historical Data was not established until September 2020, a year-to-date running average was used to compute historical average.
As of September 2020, the historical average is computed as described in Settlement Agreement.

February 10, 2022

Mr. Rocky Francis
PO Box 843
Greeley, CO 80632

Dear Mr. Francis:

AGPROfessionals' staff have been monitoring groundwater elevations on behalf of Mill Iron at your property. We perform this monitoring on the second Thursday of each month. Attached are the elevations we recorded on February 9, 2022.

Identifier	Depth to Water from Ground Surface
Francis #1 Stock	14.13
Francis #2 Irr	13.17
Francis #3 Dom	13.82

Has the 2-foot trigger point for two consecutive months been met?

☐ Yes

☒ No

Please find the attached tables and graphs representing the data collected to this date. Please do not hesitate to contact me regarding these activities.

Sincerely,



Joey Smith
AGPROfessionals
970-571-4146

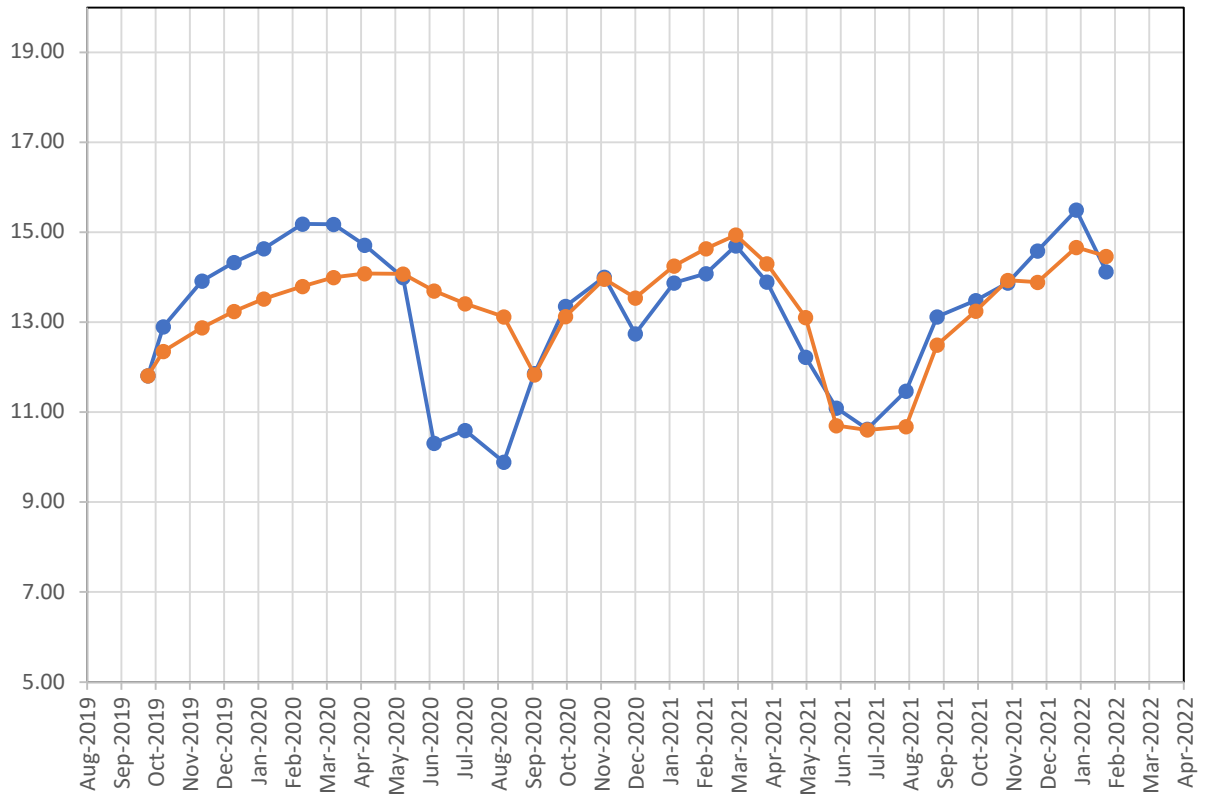
ENGINEERING, PLANNING, CONSULTING & REAL ESTATE
HQ & Mailing: 3050 67th Avenue, Suite 200, Greeley, CO 80634 | 970.535.9318 office | 970.535.9854 fax
Idaho: 213 Canyon Crest Drive, Suite 100, Twin Falls, ID 83301 | 208.595.5301

www.agpros.com

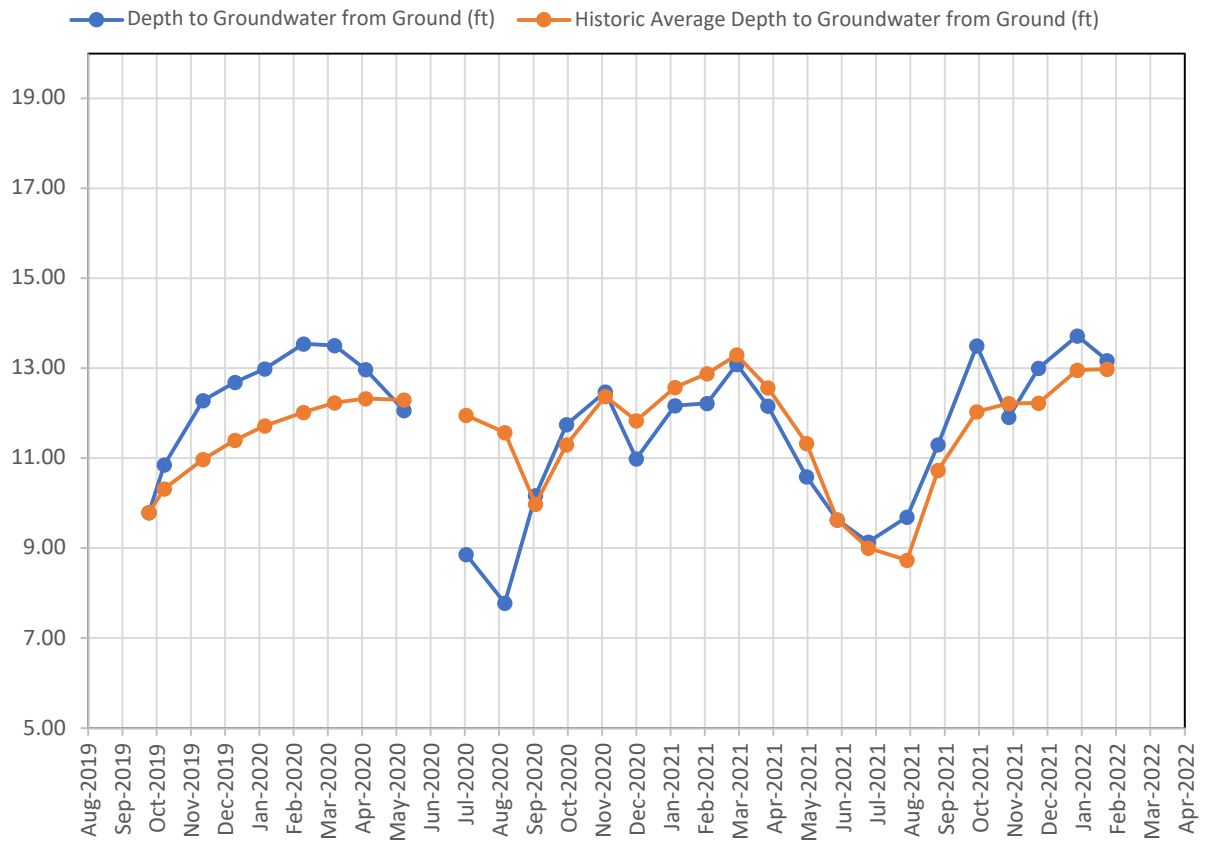
Well Designation	Francis #1 Stock		Francis #2 Irr		Francis #3 Dom	
Date	Depth to Groundwater from Ground (ft)	Trigger Level of 2 feet below Historic Average Level Met (Yes or No) Start in May 2020	Depth to Groundwater from Ground (ft)	Trigger Level of 2 feet below Historic Average Level Met (Yes or No) Start in May 2020	Depth to Groundwater from Ground (ft)	Trigger Level of 2 feet below Historic Average Level Met (Yes or No) Start in May 2020
September 26, 2019	11.81		9.79		12.04	
October 10, 2019	12.90		10.85		13.05	
November 14, 2019	13.92		12.28		14.45	
December 13, 2019	14.34		12.69		14.87	
January 9, 2020	14.64		12.99		15.16	
February 13, 2020	15.19		13.55		15.68	
March 12, 2020	15.18		13.51		15.69	
April 9, 2020	14.72		12.98		15.19	
May 14, 2020	14.00	No	12.07	No	14.50	No
June 11, 2020	10.32	No		No	10.96	No
July 9, 2020	10.60	No	8.86	No	11.28	No
August 13, 2020	9.90	No	7.78	No	10.64	No
September 10, 2020	11.87	No	10.17	No	12.37	No
October 8, 2020	13.36	No	11.75	No	13.80	No
November 12, 2020	14.01	No	12.48	No	14.44	No
December 10, 2020	12.75	No	10.99	No	13.16	No
January 14, 2021	13.88	No	12.17	No	14.31	No
February 12, 2021	14.09	No	12.22	No	14.53	No
March 11, 2021	14.71	No	13.09	No	15.17	No
April 8, 2021	13.90	No	12.16	No	14.33	No
May 13, 2021	12.23	No	10.59	No	12.50	No
June 10, 2021	11.10	No	9.63	No	11.77	No
July 8, 2021	10.63	No	9.14	No	11.00	No
August 12, 2021	11.48	No	9.69	No	11.85	No
September 9, 2021	13.13	No	11.30	No	13.31	No
October 14, 2021	13.49	No	13.50	No	13.85	No
November 11, 2021	13.88	No	11.91	No	14.37	No
December 9, 2021	14.59	No	13.00	No	15.10	No
January 13, 2022	15.50	No	13.72	No	15.98	No
February 9, 2022	14.13	No	13.17	No	13.82	No

FRANCIS #1 STOCK

—●— Depth to Groundwater from Ground (ft) —●— Historic Average Depth to Groundwater from Ground (ft)



FRANCIS #2 IRR

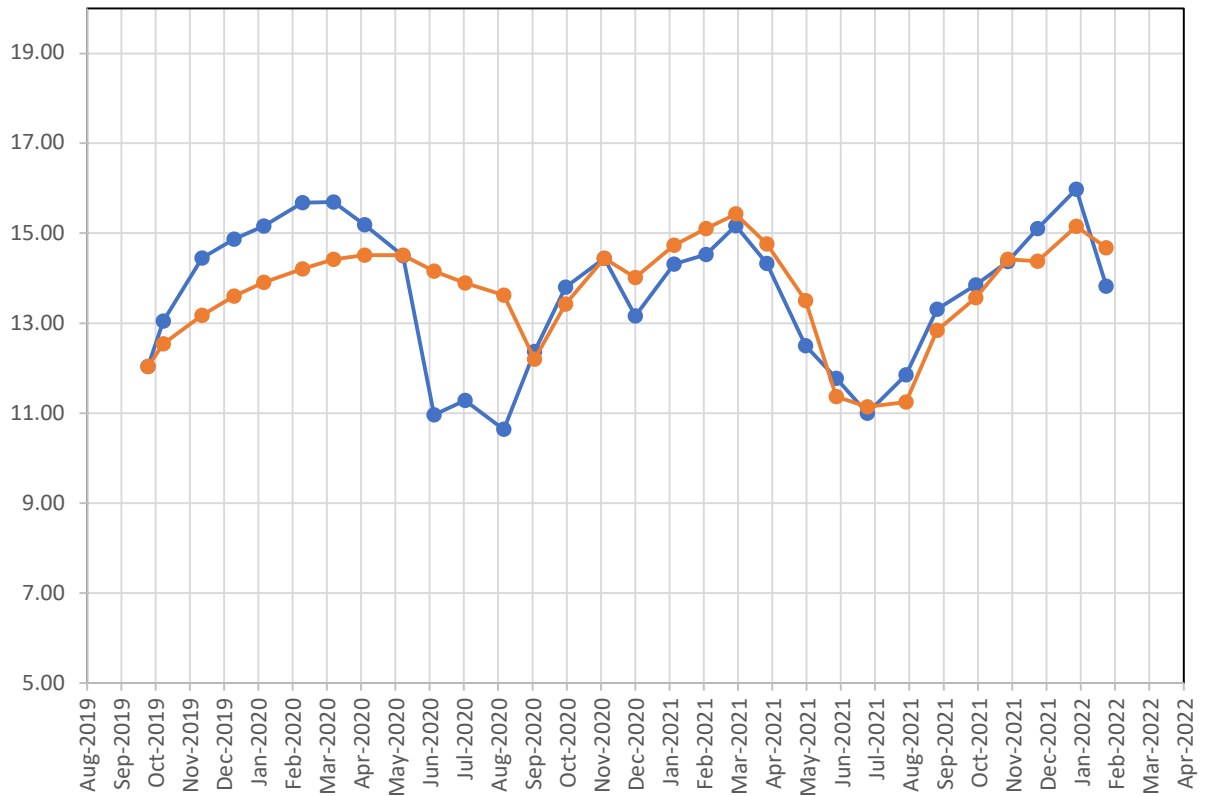


Notes:

1. Graph displays Depth to Groundwater (lower depth to groundwater reading means higher water table elevation).
2. Trigger point is described in Settlement Agreement.
3. Since Historical Data was not established until September 2020, a year-to-date running average was used to compute historical average. As of September 2020, the historical average is computed as described in Settlement Agreement.

FRANCIS #3 DOM

—●— Depth to Groundwater from Ground (ft) —●— Historic Average Depth to Groundwater from Ground (ft)



February 10, 2022

Mr. Brian Harrell
288 1st Ave
Greeley, CO 80631

Dear Mr. Harrell:

AGPROfessionals' staff have been monitoring groundwater elevations on behalf of Mill Iron at your property. We perform this monitoring on the second Thursday of each month. Attached are the elevations we recorded on February 9, 2022.

Identifier	Depth to Water from Ground Surface
Harrell #1 Dom	10.34
Harrell #2 Irr	9.69

Has the 2-foot trigger point for two consecutive months been met?

☐ Yes

☒ No

Please find the attached tables and graphs representing the data collected to this date. Please do not hesitate to contact me regarding these activities.

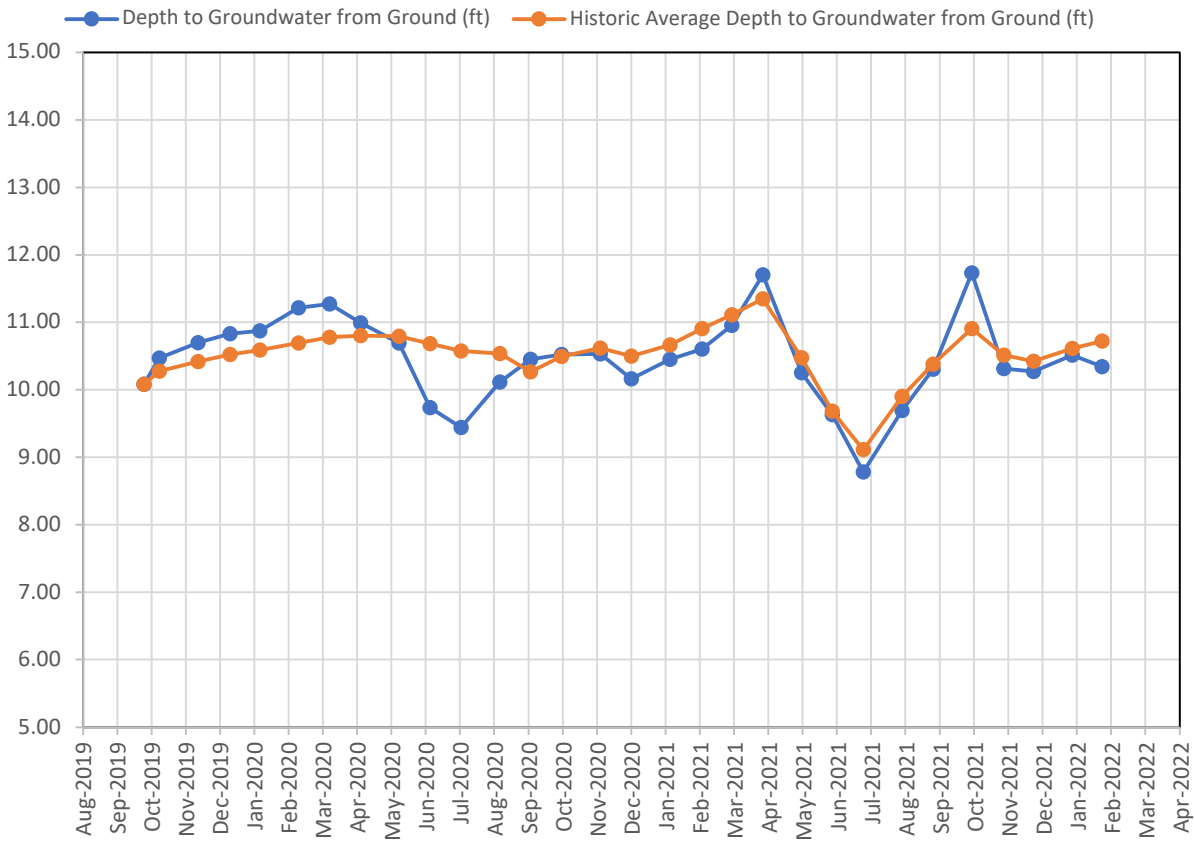
Sincerely,



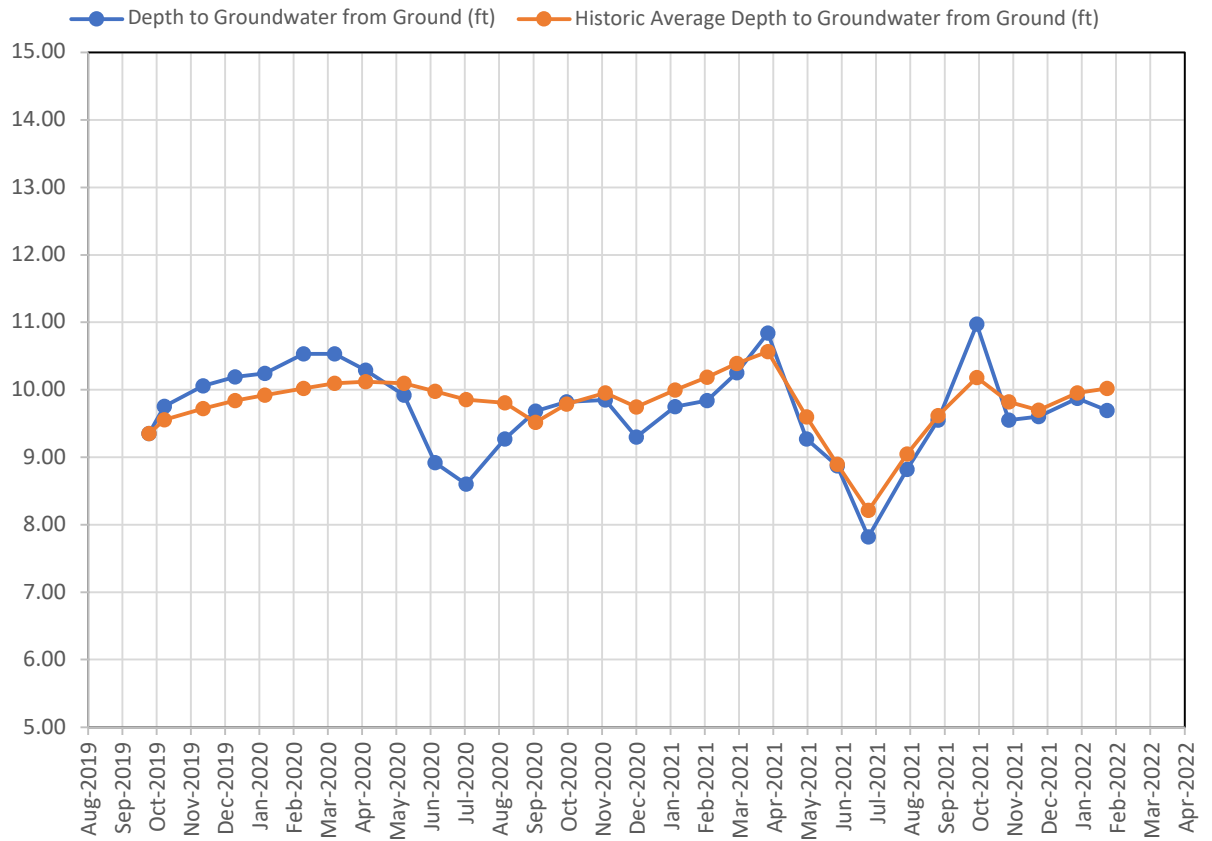
Joey Smith
AGPROfessionals
970-571-4146

Well Designation		Harrell #1 Dom	Harrell #2 Irr	
Date	Depth to Groundwater from Ground (ft)	Trigger Level of 2 feet below Historic Average Level Met (Yes or No) Start in May 2020	Depth to Groundwater from Ground (ft)	Trigger Level of 2 feet below Historic Average Level Met (Yes or No) Start in May 2020
September 26, 2019	10.08		9.35	
October 10, 2019	10.47		9.76	
November 14, 2019	10.70		10.06	
December 13, 2019	10.83		10.19	
January 9, 2020	10.87		10.24	
February 13, 2020	11.21		10.53	
March 12, 2020	11.27		10.53	
April 9, 2020	10.99		10.29	
May 14, 2020	10.69	No	9.92	No
June 11, 2020	9.73	No	8.92	No
July 9, 2020	9.44	No	8.60	No
August 13, 2020	10.11	No	9.27	No
September 10, 2020	10.45	No	9.68	No
October 8, 2020	10.52	No	9.82	No
November 12, 2020	10.53	No	9.85	No
December 10, 2020	10.16	No	9.30	No
January 14, 2021	10.45	No	9.75	No
February 12, 2021	10.60	No	9.84	No
March 11, 2021	10.95	No	10.25	No
April 8, 2021	11.70	No	10.84	No
May 13, 2021	10.25	No	9.27	No
June 10, 2021	9.63	No	8.87	No
July 8, 2021	8.78	No	7.82	No
August 12, 2021	9.69	No	8.82	No
September 9, 2021	10.30	No	9.55	No
October 14, 2021	11.73	No	10.97	No
November 11, 2021	10.31	No	9.55	No
December 9, 2021	10.27	No	9.60	No
January 13, 2022	10.51	No	9.87	No
February 9, 2022	10.34	No	9.69	No

HARRELL #1 DOM



HARRELL #2 IRR



Notes:

1. Graph displays Depth to Groundwater (lower depth to groundwater reading means higher water table elevation).
2. Trigger point is described in Settlement Agreement.
3. Since Historical Data was not established until September 2020, a year-to-date running average was used to compute historical average. As of September 2020, the historical average is computed as described in Settlement Agreement.

February 10, 2022

Ms. Dixie Hoffner
30300 WCR 57
Gill, CO 80624

Dear Ms. Hoffner:

AGPROfessionals' staff have been monitoring groundwater elevations on behalf of Mill Iron at your property. We perform this monitoring on the second Thursday of each month. Attached are the elevations we recorded on February 9, 2022.

Identifier	Depth to Water from Ground Surface
Hoffner #1 Dom	43.49
Hoffner #2 Irr	47.69

Has the 2-foot trigger point for two consecutive months been met?

- ☐ Yes
☒ No

Please find the attached tables and graphs representing the data collected to this date. Please do not hesitate to contact me regarding these activities.

Sincerely,

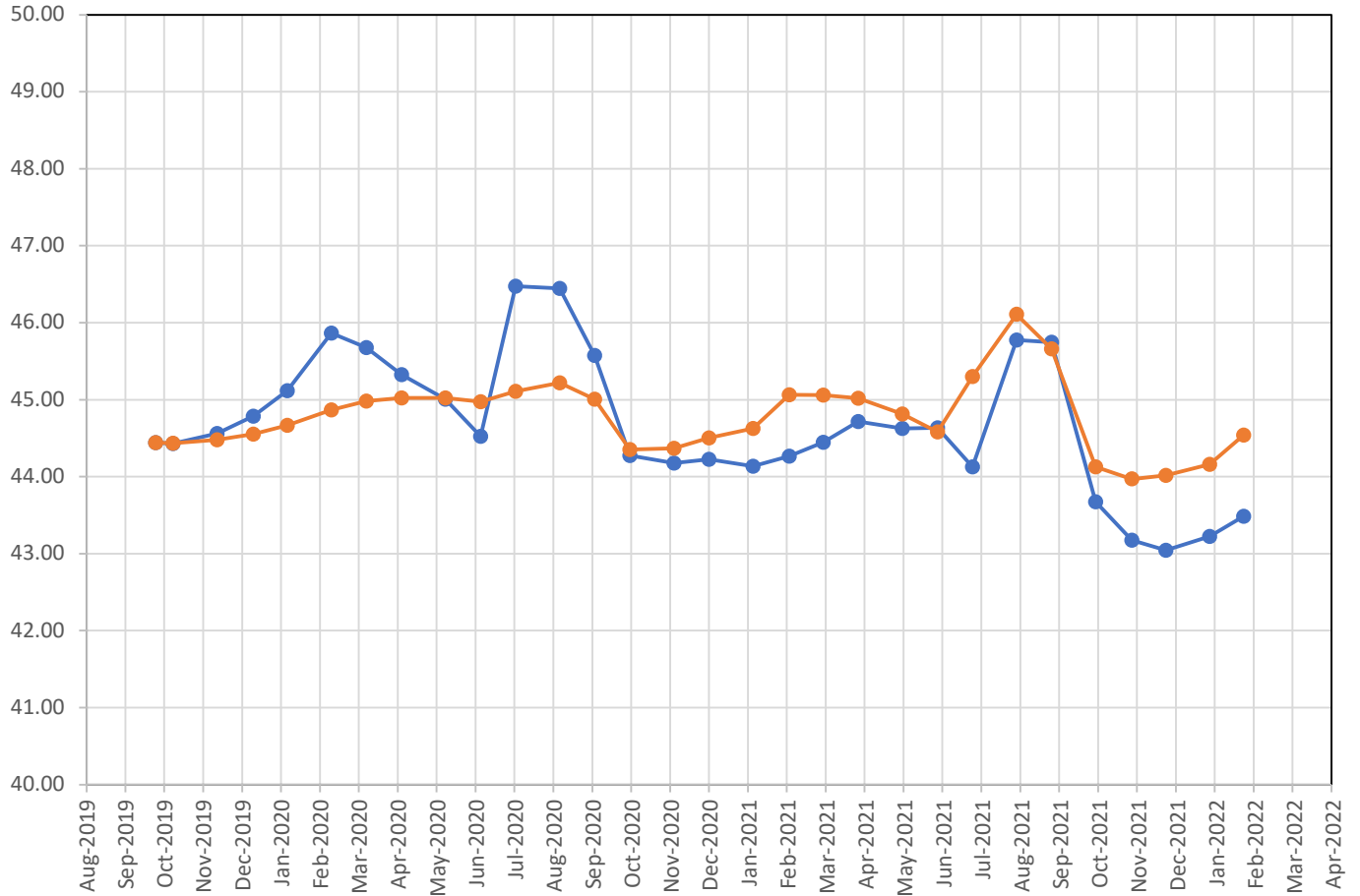


Joey Smith
AGPROfessionals
970-571-4146

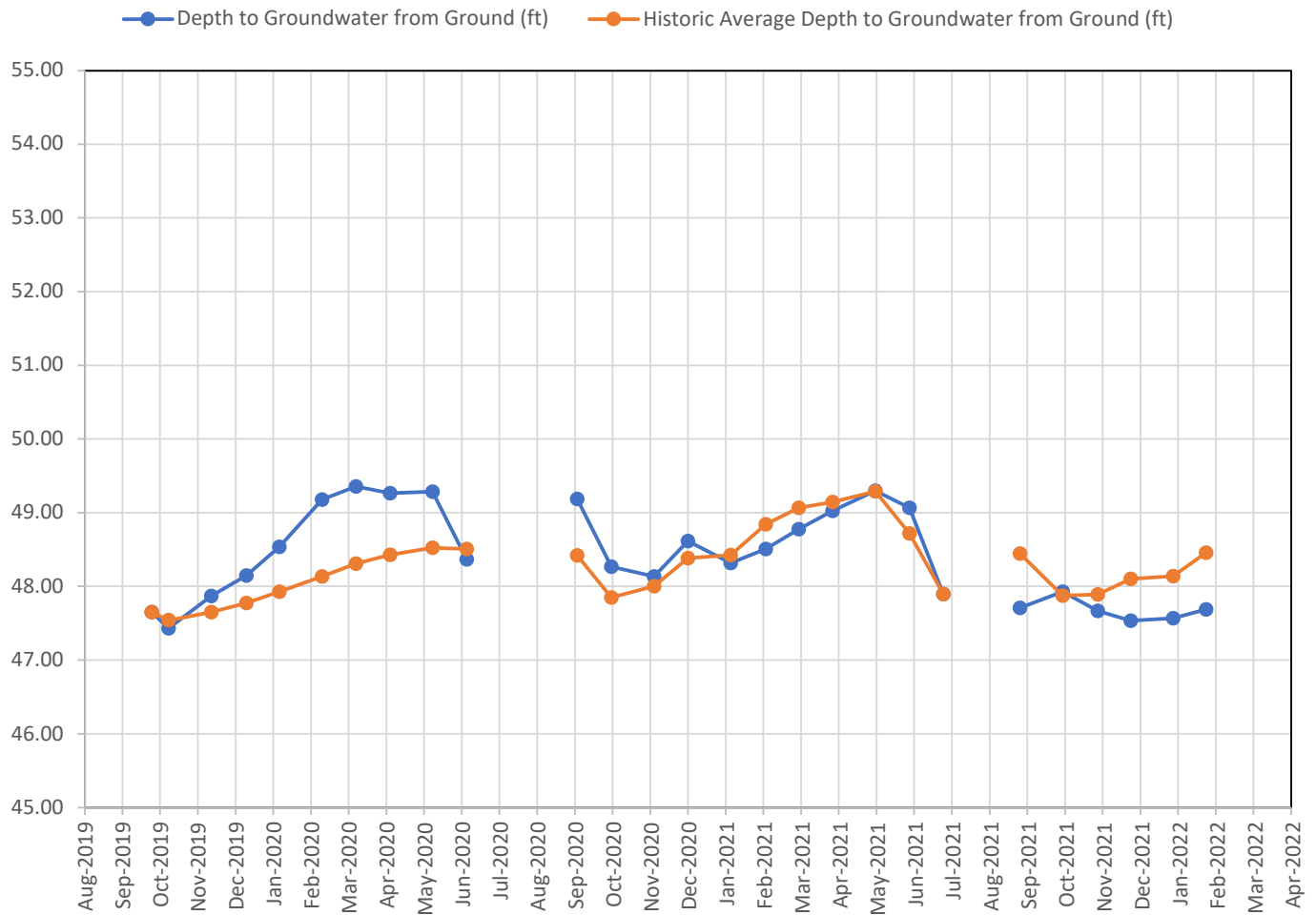
Well Designation	Hoffner #1 Dom		Hoffner #2 Irr	
Date	Depth to Groundwater from Ground (ft)	Trigger Level of 2 feet below Historic Average Level Met (Yes or No) Start in May 2020	Depth to Groundwater from Ground (ft)	Trigger Level of 2 feet below Historic Average Level Met (Yes or No) Start in May 2020
September 26, 2019	44.44		47.65	
October 10, 2019	44.43		47.43	
November 14, 2019	44.56		47.87	
December 13, 2019	44.79		48.15	
January 9, 2020	45.12		48.54	
February 13, 2020	45.87		49.18	
March 12, 2020	45.68		49.36	
April 9, 2020	45.33		49.27	
May 14, 2020	45.01	No	49.29	No
June 11, 2020	44.53	No	48.37	No
July 9, 2020	46.48	No		No
August 13, 2020	46.45	No		No
September 10, 2020	45.58	No	49.19	No
October 8, 2020	44.28	No	48.27	No
November 12, 2020	44.18	No	48.14	No
December 10, 2020	44.23	No	48.62	No
January 14, 2021	44.14	No	48.32	No
February 12, 2021	44.27	No	48.51	No
March 11, 2021	44.45	No	48.78	No
April 8, 2021	44.72	No	49.03	No
May 13, 2021	44.63	No	49.30	No
June 10, 2021	44.64	No	49.07	No
July 8, 2021	44.13	No	47.90	No
August 12, 2021	45.78	No		No
September 9, 2021	45.75	No	47.71	No
October 14, 2021	43.68	No	47.93	No
November 11, 2021	43.18	No	47.67	No
December 9, 2021	43.05	No	47.54	No
January 13, 2022	43.23	No	47.57	No
February 9, 2022	43.49	No	47.69	No

HOFFNER #1 DOM

● Depth to Groundwater from Ground (ft) ● Historic Average Depth to Groundwater from Ground (ft)



HOFFNER #2 IRR



Notes:

1. Graph displays Depth to Groundwater (lower depth to groundwater reading means higher water table elevation).
2. Trigger point is described in Settlement Agreement.
3. Since Historical Data was not established until September 2020, a year-to-date running average was used to compute historical average.
As of September 2020, the historical average is computed as described in Settlement Agreement.

February 10, 2022

Mr. Jim Koehler
1001 E C St.
Greeley, CO 80631

Dear Mr. Koehler:

AGPROfessionals' staff have been monitoring groundwater elevations on behalf of Mill Iron at your property. We perform this monitoring on the second Thursday of each month. Attached are the elevations we recorded on February 9, 2022.

Identifier	Depth to Water from Ground Surface
Koehler #1 Dom (Vault)	47.62
Koehler #2 Stock (Vault)	47.27
Koehler #3 Irr	50.08

Has the 2-foot trigger point for two consecutive months been met?

☐ Yes

☒ No

Please find the attached tables and graphs representing the data collected to this date. Please do not hesitate to contact me regarding these activities.

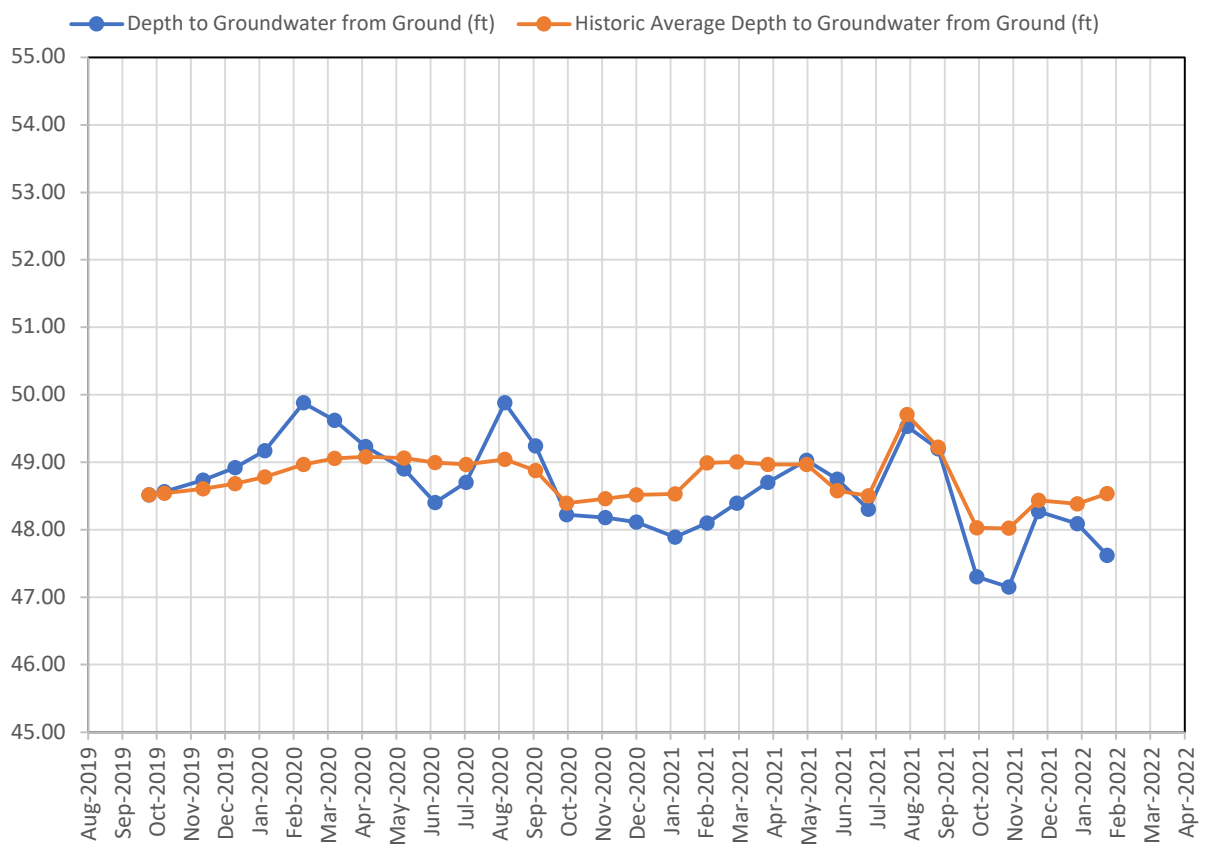
Sincerely,



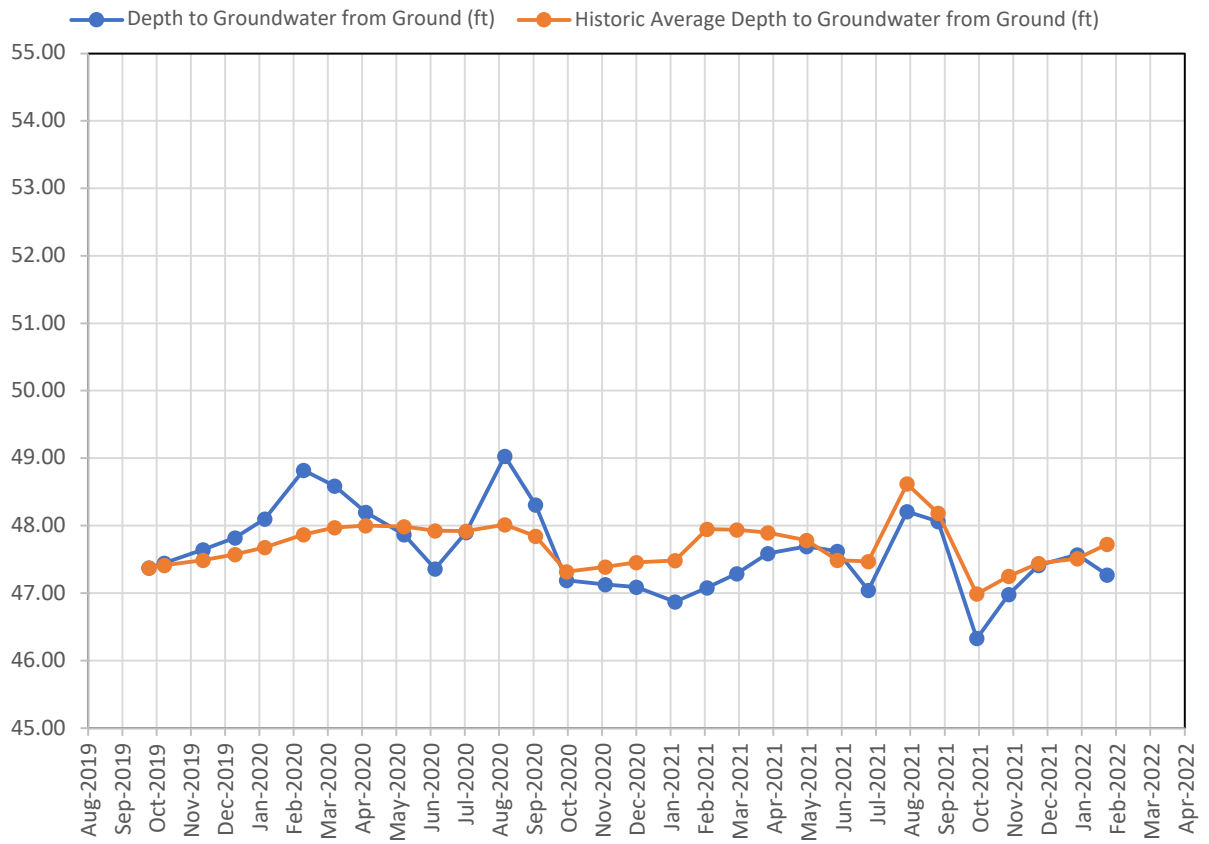
Joey Smith
AGPROfessionals
970-571-4146

Well Designation	Koehler #1 Dom (Vault)		Koehler #2 Stock (Vault)		Koehler #3 Irr	
	Date	Depth to Groundwater from Ground (ft)	Trigger Level of 2 feet below Historic Average Level Met (Yes or No) Start in May 2020	Depth to Groundwater from Ground (ft)	Trigger Level of 2 feet below Historic Average Level Met (Yes or No) Start in May 2020	Depth to Groundwater from Ground (ft)
September 26, 2019	48.52		47.38		50.36	
October 10, 2019	48.57		47.45		49.55	
November 14, 2019	48.74		47.65		49.74	
December 13, 2019	48.92		47.82		49.91	
January 9, 2020	49.17		48.10		50.20	
February 13, 2020	49.88		48.82		50.81	
March 12, 2020	49.62		48.59		50.83	
April 9, 2020	49.23		48.20		50.71	
May 14, 2020	48.90	No	47.87	No	50.49	No
June 11, 2020	48.40	No	47.36	No	49.91	No
July 9, 2020	48.70	No	47.90	No	51.58	No
August 13, 2020	49.88	No	49.03	No	51.83	No
September 10, 2020	49.24	No	48.31	No	50.50	No
October 8, 2020	48.22	No	47.19	No	49.52	No
November 12, 2020	48.18	No	47.13	No	49.18	No
December 10, 2020	48.11	No	47.09	No	49.48	No
January 14, 2021	47.89	No	46.87	No	49.48	No
February 12, 2021	48.10	No	47.08	No	49.66	No
March 11, 2021	48.39	No	47.29	No	49.98	No
April 8, 2021	48.70	No	47.59	No	50.27	No
May 13, 2021	49.03	No	47.69	No	50.01	No
June 10, 2021	48.75	No	47.62	No	50.65	No
July 8, 2021	48.30	No	47.04	No	50.00	No
August 12, 2021	49.53	No	48.21	No		No
September 9, 2021	49.20	No	48.06	No	50.12	No
October 14, 2021	47.30	No	46.33	No	50.15	No
November 11, 2021	47.15	No	46.98	No	50.10	No
December 9, 2021	48.27	No	47.41	No	49.92	No
January 13, 2022	48.07	No	47.57	No	50.13	No
February 9, 2022	47.62	No	47.27	No	50.08	No

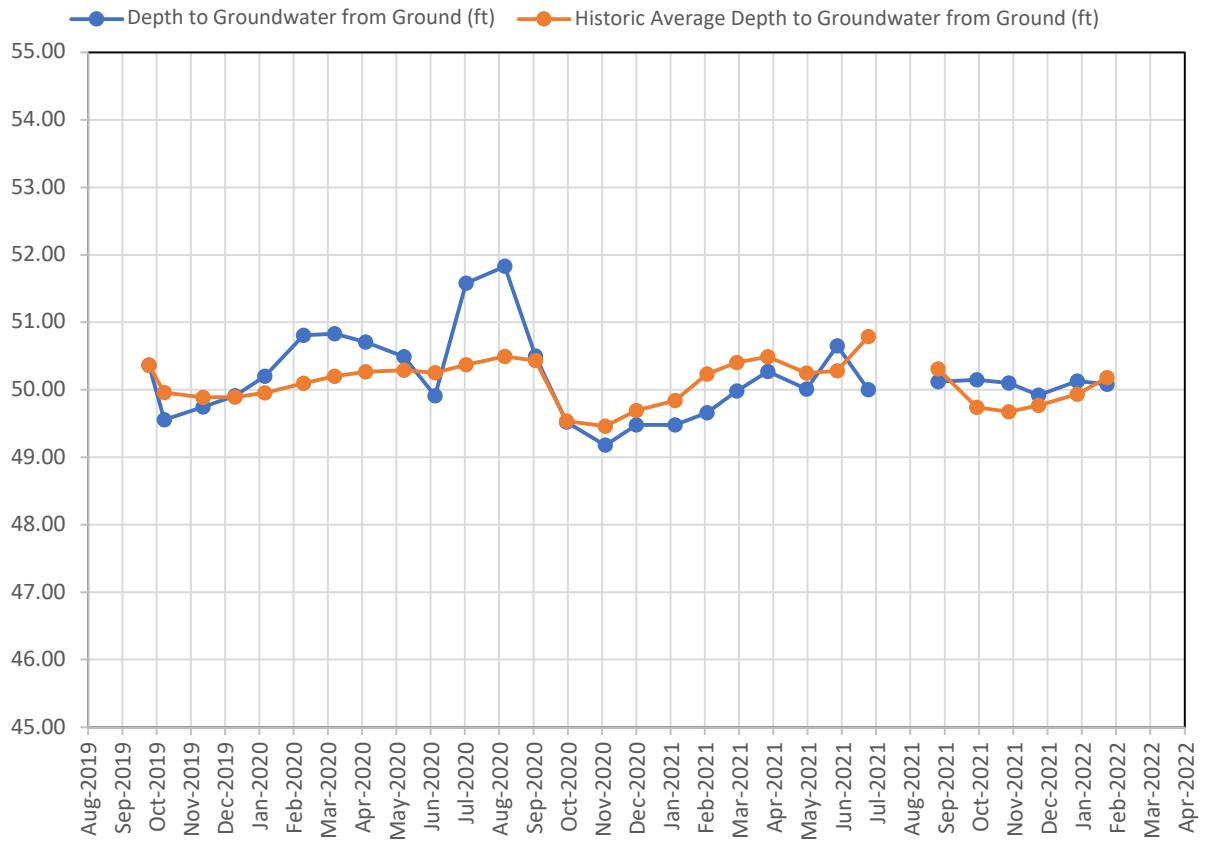
KOEHLER #1 DOM (VAULT)



KOEHLER #2 STOCK (VAULT)



KOEHLER #3 IRR



Notes:

1. Graph displays Depth to Groundwater (lower depth to groundwater reading means higher water table elevation).
2. Trigger point is described in Settlement Agreement.
3. Since Historical Data was not established until September 2020, a year-to-date running average was used to compute historical average. As of September 2020, the historical average is computed as described in Settlement Agreement.

February 10, 2022

Mr. Brian Murata
29485 WCR 43
Greeley, CO 80631

Dear Mr. Murata:

AGPROfessionals' staff have been monitoring groundwater elevations on behalf of Mill Iron at your property. We perform this monitoring on the second Thursday of each month. Attached is the elevation we recorded on February 9, 2022.

Identifier	Depth to Water from Ground Surface
Murata #1 Irr	46.11

Has the 2-foot trigger point for two consecutive months been met?

- ☐ Yes
☒ No

Please find the attached tables and graphs representing the data collected to this date. Please do not hesitate to contact me regarding these activities.

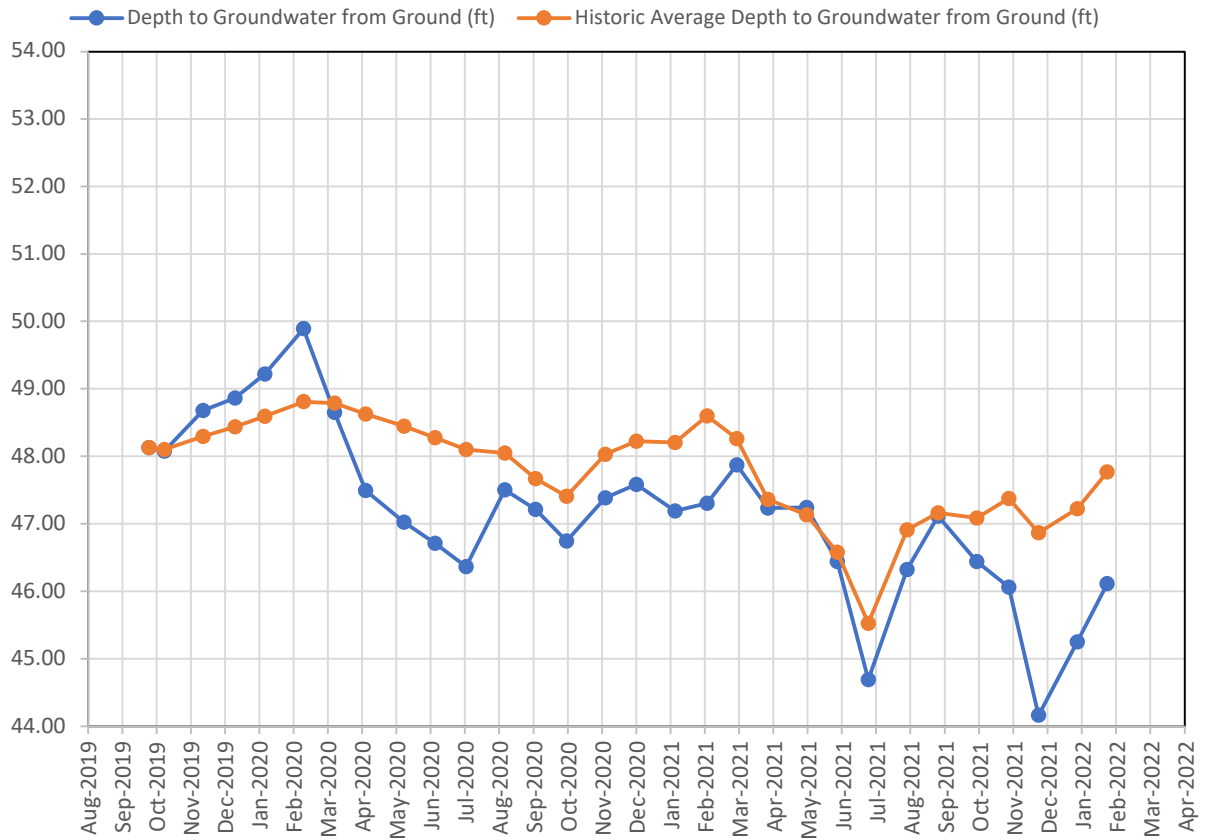
Sincerely,



Joey Smith
AGPROfessionals
970-571-4146

Well Designation		Murata #1 Irr
Date	Depth to Groundwater from Ground (ft)	Trigger Level of 2 feet below Historic Average Level Met (Yes or No) Start in May 2020
September 26, 2019	48.13	
October 10, 2019	48.08	
November 14, 2019	48.68	
December 13, 2019	48.86	
January 9, 2020	49.22	
February 13, 2020	49.89	
March 12, 2020	48.65	
April 9, 2020	47.49	
May 14, 2020	47.02	No
June 11, 2020	46.71	No
July 9, 2020	46.36	No
August 13, 2020	47.50	No
September 10, 2020	47.21	No
October 8, 2020	46.74	No
November 12, 2020	47.38	No
December 10, 2020	47.58	No
January 14, 2021	47.19	No
February 12, 2021	47.30	No
March 11, 2021	47.87	No
April 8, 2021	47.23	No
May 13, 2021	47.24	No
June 10, 2021	46.44	No
July 8, 2021	44.69	No
August 12, 2021	46.32	No
September 9, 2021	47.11	No
October 14, 2021	46.44	No
November 11, 2021	46.06	No
December 9, 2021	44.16	No
January 13, 2022	45.25	No
February 9, 2022	46.11	No

MURATA #1 IRR



Notes:

1. Graph displays Depth to Groundwater (lower depth to groundwater reading means higher water table elevation).
2. Trigger point is described in Settlement Agreement.
3. Since Historical Data was not established until September 2020, a year-to-date running average was used to compute historical average. As of September 2020, the historical average is computed as described in Settlement Agreement.

February 10, 2022

Ms. Silvia Parker
211 Balsam Avenue
Greeley, CO 80631

Dear Ms. Parker:

AGPROfessionals' staff have been monitoring groundwater elevations on behalf of Mill Iron at your property. We perform this monitoring on the second Thursday of each month. Attached is the elevation we recorded on February 9, 2022.

Identifier	Depth to Water from Ground Surface
Parker Dom (Vault)	38.87

Has the 2-foot trigger point for two consecutive months been met?

☐ Yes

☒ No

Please find the attached tables and graphs representing the data collected to this date. Please do not hesitate to contact me regarding these activities.

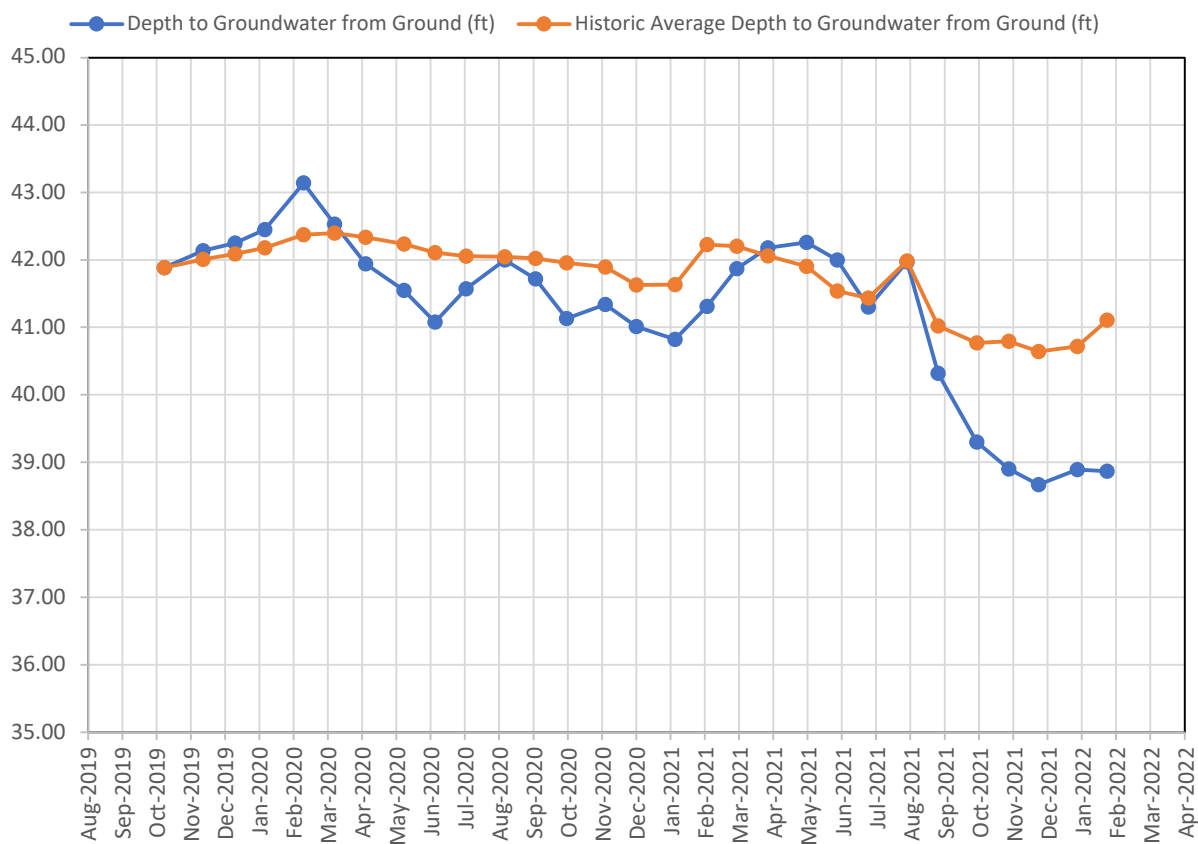
Sincerely,



Joey Smith
AGPROfessionals
970-571-4146

Well Designation		Parker Dom
Date	Depth to Groundwater from Ground (ft)	Trigger Level of 2 feet below Historic Average Level Met (Yes or No) Start in May 2020
September 26, 2019	no reading	
October 10, 2019	41.89	
November 14, 2019	42.14	
December 13, 2019	42.25	
January 9, 2020	42.45	
February 13, 2020	43.14	
March 12, 2020	42.53	
April 9, 2020	41.94	
May 14, 2020	41.55	No
June 11, 2020	41.08	No
July 9, 2020	41.57	No
August 13, 2020	42.00	No
September 10, 2020	41.72	No
October 8, 2020	41.13	No
November 12, 2020	41.34	No
December 10, 2020	41.01	No
January 14, 2021	40.82	No
February 12, 2021	41.31	No
March 11, 2021	41.87	No
April 8, 2021	42.18	No
May 13, 2021	42.26	No
June 10, 2021	42.00	No
July 8, 2021	41.30	No
August 12, 2021	41.97	No
September 9, 2021	40.32	No
October 14, 2021	39.30	No
November 11, 2021	38.90	No
December 9, 2021	38.67	No
January 13, 2022	38.89	No
February 9, 2022	38.87	No

PARKER DOM



Notes:

1. Graph displays Depth to Groundwater (lower depth to groundwater reading means higher water table elevation).
2. Trigger point is described in Settlement Agreement.
3. Since Historical Data was not established until September 2020, a year-to-date running average was used to compute historical average. As of September 2020, the historical average is computed as described in Settlement Agreement.

February 10, 2022

Ms. Diane Taylor
665 Balsam Ave
Greeley, CO 80631

Dear Ms. Taylor:

AGPROfessionals' staff have been monitoring groundwater elevations on behalf of Mill Iron at your property. We perform this monitoring on the second Thursday of each month. Attached is the elevation we recorded on February 9, 2022.

Identifier	Depth to Water from Ground Surface
Taylor Dom	22.00

Has the 2-foot trigger point for two consecutive months been met?

☐ Yes

☒ No

Please find the attached tables and graphs representing the data collected to this date. Please do not hesitate to contact me regarding these activities.

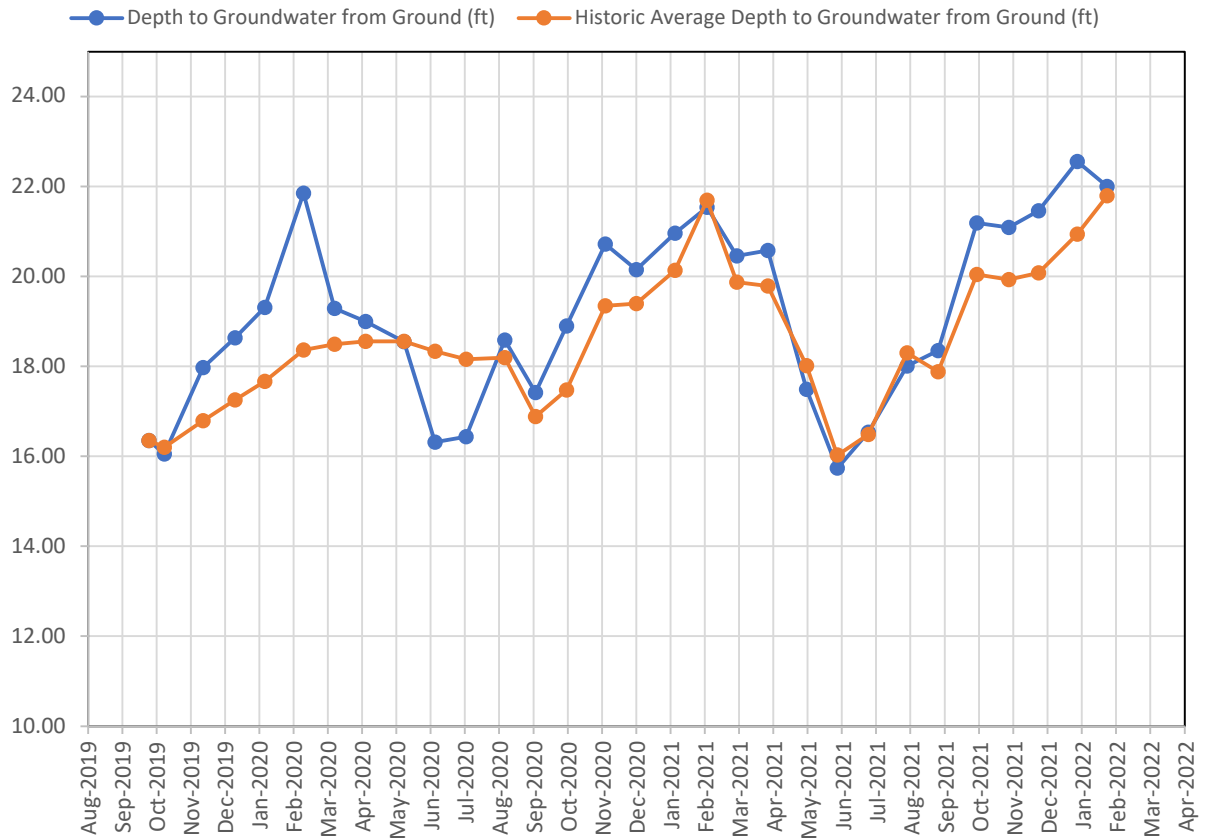
Sincerely,



Joey Smith
AGPROfessionals
970-571-4146

Well Designation		Taylor Dom
Date	Depth to Groundwater from Ground (ft)	Trigger Level of 2 feet below Historic Average Level Met (Yes or No) Start in May 2020
September 26, 2019	16.35	
October 10, 2019	16.05	
November 14, 2019	17.97	
December 13, 2019	18.64	
January 9, 2020	19.31	
February 13, 2020	21.85	
March 12, 2020	19.29	
April 9, 2020	19.00	
May 14, 2020	18.55	No
June 11, 2020	16.32	No
July 9, 2020	16.44	No
August 13, 2020	18.59	No
September 10, 2020	17.42	No
October 8, 2020	18.90	No
November 12, 2020	20.72	No
December 10, 2020	20.15	No
January 14, 2021	20.96	No
February 12, 2021	21.54	No
March 11, 2021	20.46	No
April 8, 2021	20.58	No
May 13, 2021	17.49	No
June 10, 2021	15.74	No
July 8, 2021	16.54	No
August 12, 2021	18.01	No
September 9, 2021	18.35	No
October 14, 2021	21.19	No
November 11, 2021	21.09	No
December 9, 2021	21.46	No
January 13, 2022	22.56	No
February 9, 2022	22.00	No

TAYLOR DOM



Notes:

1. Graph displays Depth to Groundwater (lower depth to groundwater reading means higher water table elevation).
2. Trigger point is described in Settlement Agreement.
3. Since Historical Data was not established until September 2020, a year-to-date running average was used to compute historical average. As of September 2020, the historical average is computed as described in Settlement Agreement.

Well Designation		Global Assets Davis Irr
Date	Depth to Groundwater from Ground (ft)	Trigger Level of 2 feet below Historic Average Level Met (Yes or No) Start in May 2020
September 26, 2019	46.61	
October 10, 2019	46.62	
November 14, 2019	46.81	
December 13, 2019	46.98	
January 9, 2020	47.22	
February 13, 2020	47.98	
March 12, 2020	47.57	
April 9, 2020	47.15	
May 14, 2020	46.80	No
June 11, 2020	46.32	No
July 9, 2020	46.54	No
August 13, 2020	47.66	No
September 10, 2020	47.10	No
October 8, 2020	46.16	No
November 12, 2020	46.13	No
December 10, 2020	46.05	No
January 14, 2021	45.76	No
February 12, 2021	45.98	No
March 11, 2021	46.30	No
April 8, 2021	46.58	No
May 13, 2021	46.53	No
June 10, 2021	46.52	No
July 8, 2021	46.08	No
August 12, 2021	47.20	No
September 9, 2021	46.74	No
October 14, 2021	46.23	No
November 12, 2021	45.62	No
December 9, 2021	44.44	No
January 13, 2022	44.67	No
February 9, 2022	44.68	No

GLOBAL ASSET RECOVERY DAVIS IRR

