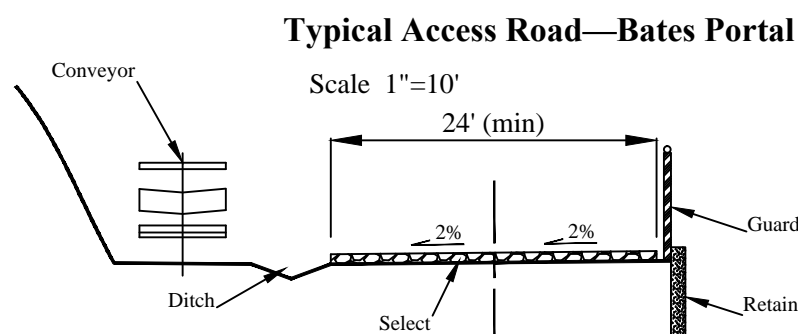
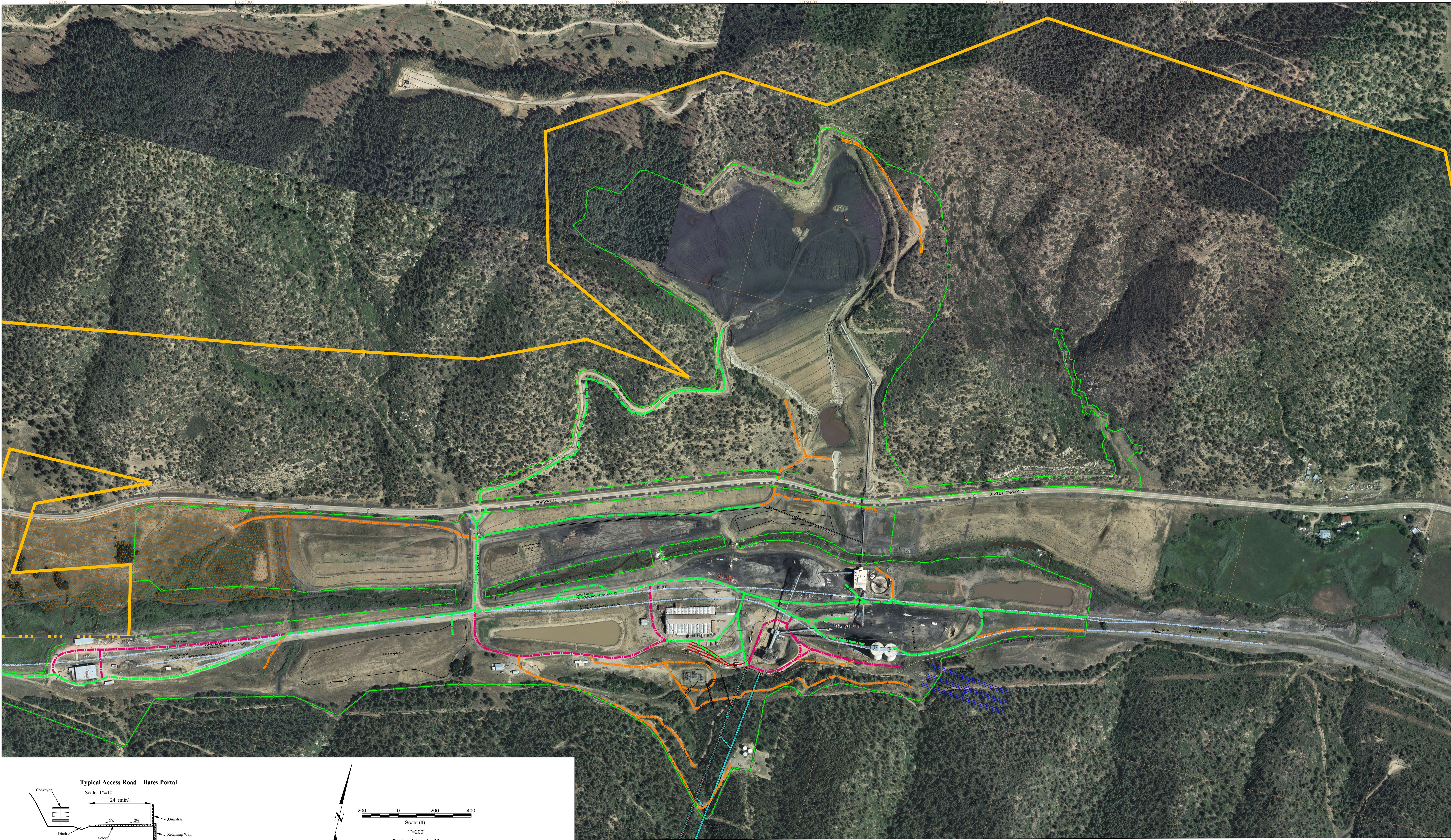
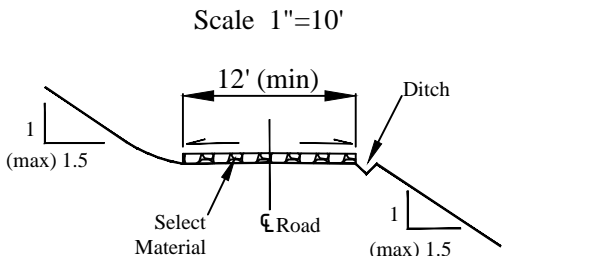


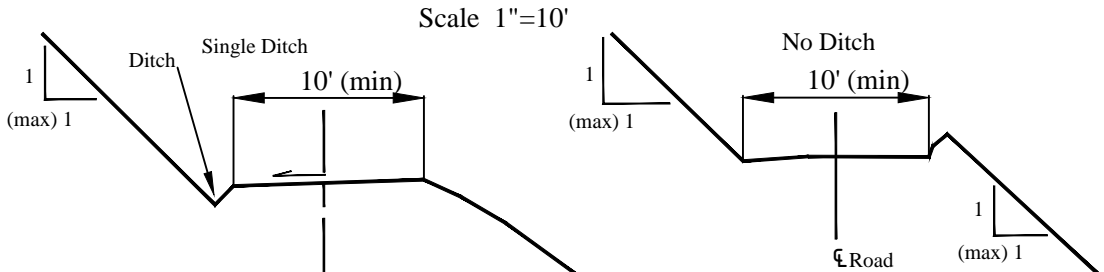
PLAN VIEW



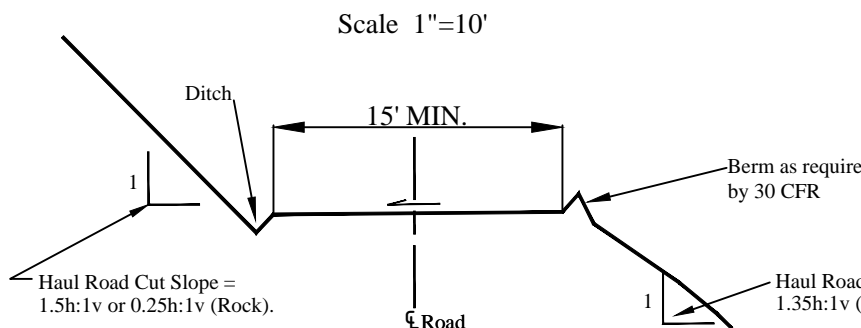
Typical Access Road and Haul Road Section



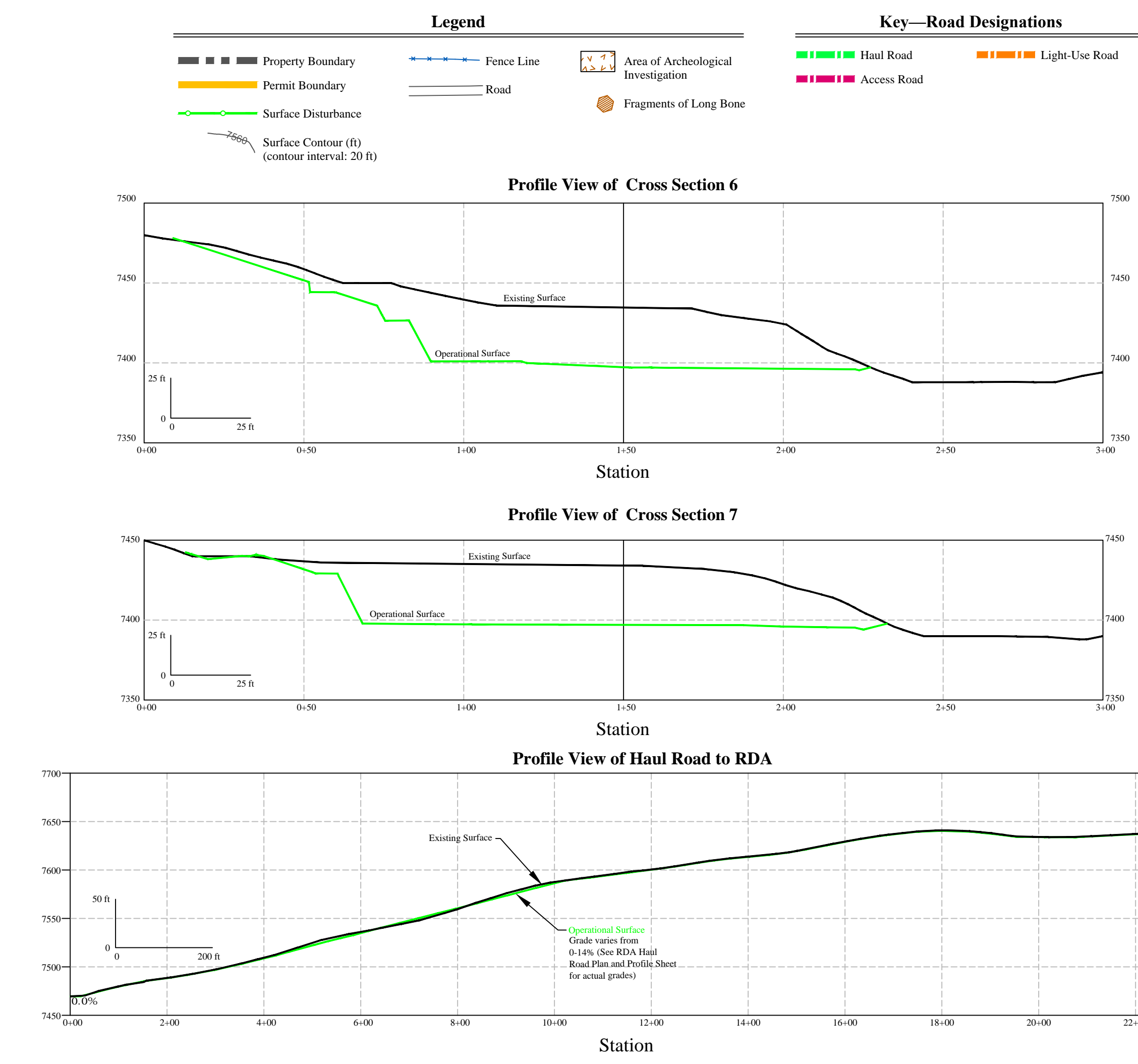
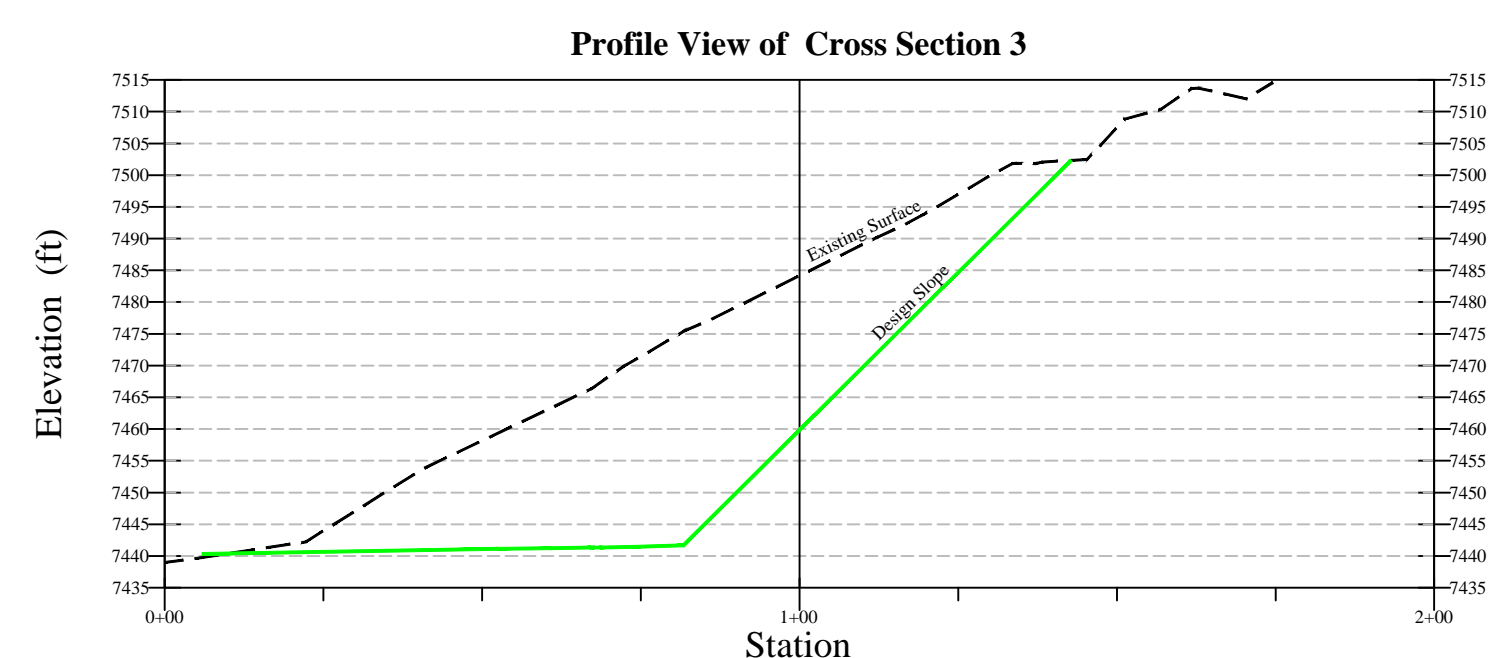
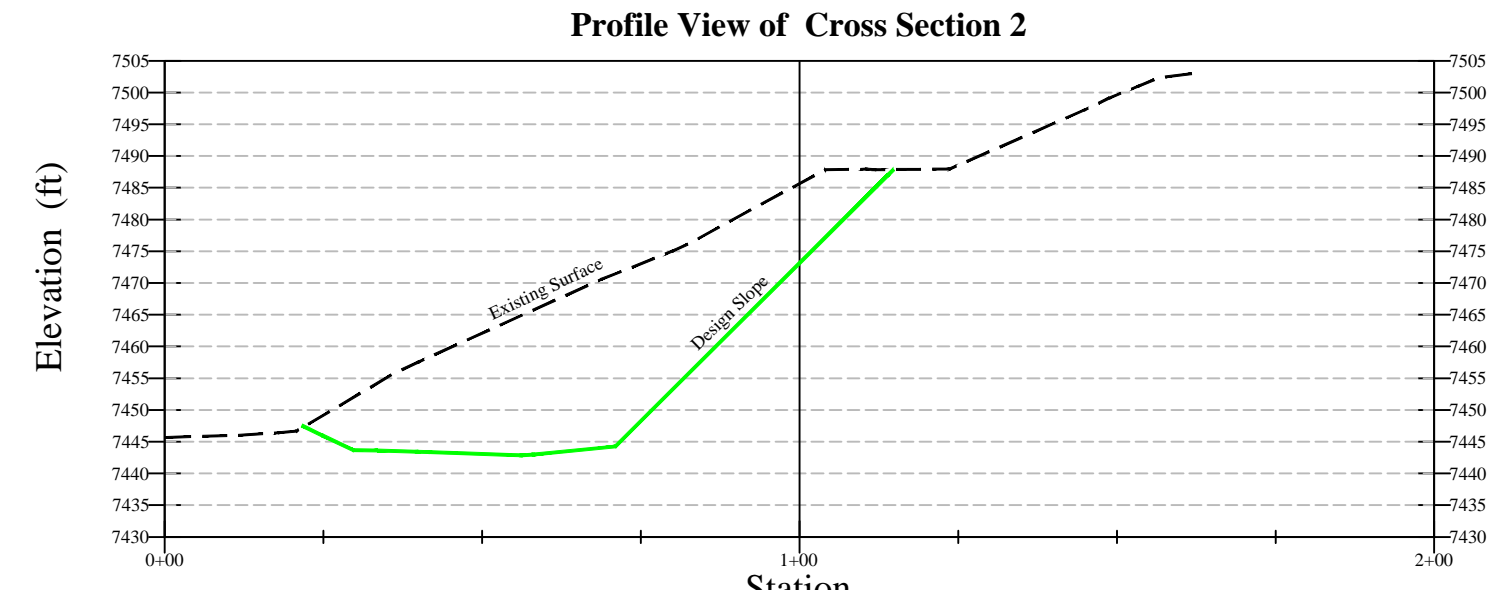
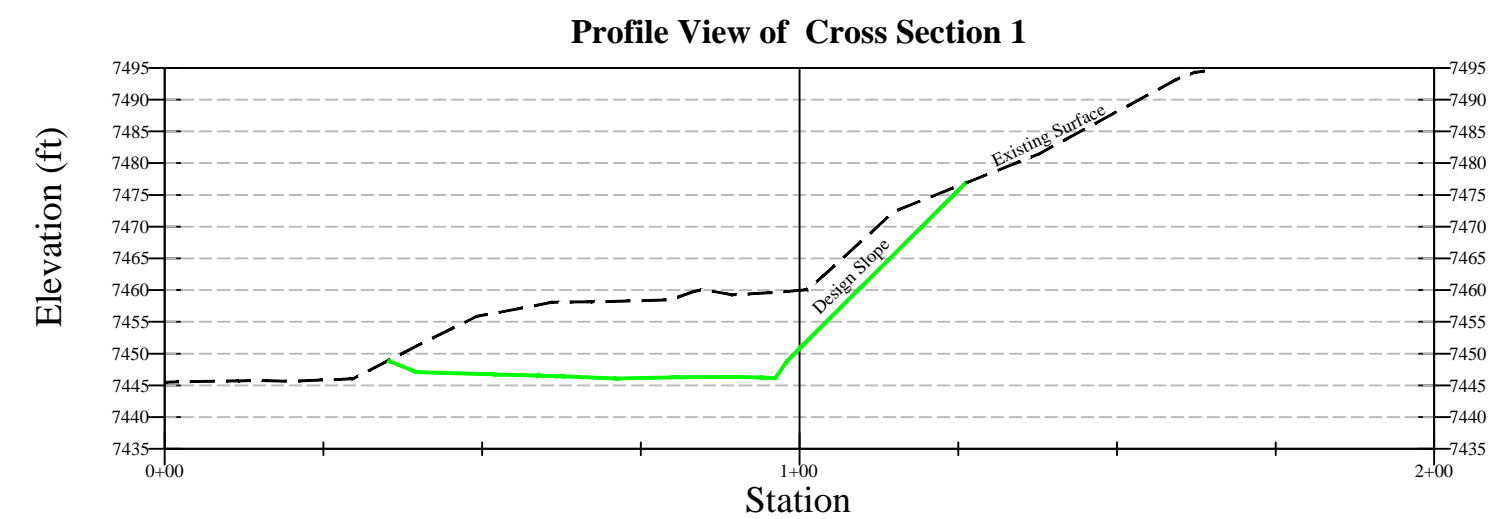
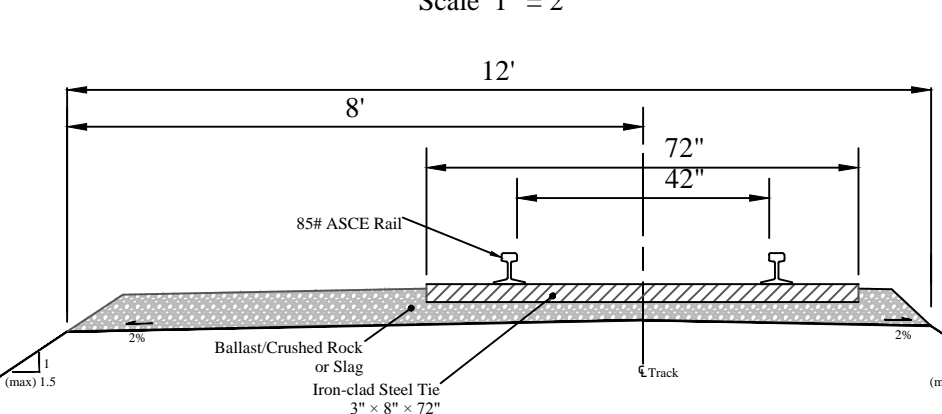
Typical Light-Use Road Cross Section



Typical RDA Haul Road Cross Section



Typical Slope Track Section



Rev	Description	By	Date
1	Archaeological information	DMS	11/25/08
2	Updated, show coal and new coal stockpiles labeled	DMS	1/28/09
3	Raw coal location and bulk	DMS	1/19/07
4	Road to eastern typical stockpile area revised	TJA	2/28/07
5	Technical Revision: Added haul road to raw and clean coal stockpile areas, revised access road north of lot. Bldg to a haul road.	DMS	4/1/07
6	Revised access road to refuse area (near 1)	DMS	2/18/08
7	Road moved closer to 1/150 from water entrance	DMS	4/1/07
8	Permit renewal	DMS	10/1/08
9	Haul road north of lot added	DMS	11/1/08
10	Added steel post station, coal sample station, new truck dump, and truck dump, revised typical pile. Expanded raw coal pile and clean coal pile with disturbed area boundary.	DF	1/2/09
11	Added temporary storage area	DF	4/1/09
12	Added north station to prep plant	DF	8/21/09
13	Added new refuse access road (near 1)	DF	8/25/09
14	Added refuse tank location	DF	1/1/10
15	Added haul road extension	DF	1/25/10
16	Added haul road extension, coal stockpile areas, and related culverts	DF	1/25/10
17	Added station location	DF	2/1/10
18	Added haul road extension near coal lab	DF	2/1/10
19	Changed permit boundary, added development coal waste pile and storage treatment plant	RCS	2/25/10
20	Changed coal stockpile area	RCS	2/1/10
21	Revised surface disturbance boundary	RCS	2/25/10
22	Revised refuse access road to a bulk	RCS	9/7/10
23	Nothing recorded	RCS	9/7/10
24	Technical revision boundary with haul road 1/10	RCS	9/7/10
25	Change access road to refuse area, north of development coal waste pile, near east entrance to mine and near basin house to light use haul road near old access	RCS	9/7/10
26	Added raw coal station site. Revised RDA road and culverts, added shower trailer	RCS	12/1/10
27	Added rail and surface tank and culverts and culverts and material storage area revised S.D. boundary	RCS	2/1/11
28	Added intermediate storage area	RCS	2/2/11
29	Added well, surge and VES points	RCS	3/8/11
30	Added survey line, pond and train line location	RCS	5/8/11
31	Added rail unloading hopper with conveyor and closed haul tank with culvert	RCS	6/24/11
32	Added surge and VES points	RCS	6/15/11
33	Added pump house and culverts	RCS	10/1/11
34	Revised rail unloading hopper and conveyor	RCS	3/7/11
35	Added access road to storage with culvert	RCS	3/7/11
36	Added cover paths, culverts and tank	RL	7/1/11
37	Revised intermediate storage area with typical stockpile #1	DF	11/1/11
38	Added facility access	RCS	10/1/11
39	Added maintenance corridor	RCS	9/1/11
40	Revised rail unloading system, added culverts, extended clean coal tunnel	RCS	11/1/11
41	Revised raw coal access	RCS	11/1/11
42	Revised raw coal access, added haul road to old truck dump location. Revised culverts	RCS	11/1/11
43	Added haul road to refuse area, north of development coal waste pile, near east entrance to mine and near basin house to light use haul road near old access	RCS	11/1/11
44	Change surface pump location	RCS	8/2/11
45	Added facility	RCS	10/1/11
46	Added temporary facilities	RCS	1/1/11
47	Added temporary storage equipment	RCS	8/2/11
48	Added temporary facilities	RCS	12/1/11
49	Added temporary facilities	RCS	12/1/11
50	Added haul road to refuse area, north of development coal waste pile, near east entrance to mine and near basin house to light use haul road near old access	RCS	12/1/11
51	Added haul road to refuse area, north of development coal waste pile, near east entrance to mine and near basin house to light use haul road near old access	RCS	12/1/11
52	Added haul road to refuse area, north of development coal waste pile, near east entrance to mine and near basin house to light use haul road near old access	RCS	12/1/11
53	Added haul road to refuse area, north of development coal waste pile, near east entrance to mine and near basin house to light use haul road near old access	RCS	12/1/11
54	Added haul road to refuse area, north of development coal waste pile, near east entrance to mine and near basin house to light use haul road near old access	RCS	12/1/11
55	Added haul road to refuse area, north of development coal waste pile, near east entrance to mine and near basin house to light use haul road near old access	RCS	12/1/11
56	Added haul road to refuse area, north of development coal waste pile, near east entrance to mine and near basin house to light use haul road near old access	RCS	12/1/11
57	Added haul road to refuse area, north of development coal waste pile, near east entrance to mine and near basin house to light use haul road near old access	RCS	12/1/11
58	Added haul road to refuse area, north of development coal waste pile, near east entrance to mine and near basin house to light use haul road near old access	RCS	12/1/11
59	Added haul road to refuse area, north of development coal waste pile, near east entrance to mine and near basin house to light use haul road near old access	RCS	12/1/11
60	Added haul road to refuse area, north of development coal waste pile, near east entrance to mine and near basin house to light use haul road near old access	RCS	12/1/11
61	Added haul road to refuse area, north of development coal waste pile, near east entrance to mine and near basin house to light use haul road near old access	RCS	12/1/11
62	Added haul road to refuse area, north of development coal waste pile, near east entrance to mine and near basin house to light use haul road near old access	RCS	12/1/11
63	Added haul road to refuse area, north of development coal waste pile, near east entrance to mine and near basin house to light use haul road near old access	RCS	12/1/11

- Notes:**
- Map Grid—State Plane Zone 0503 NAD83
 - Inset 1 shows the area just north of the refuse dam
 - Aerial photography—August 2010
 - Surface contours—August 2010

New Elk Mine Site Plan
East Portal
Roads, Slope Track, and Cut Areas

DESIGNED BY: *
DRAWN BY: JT/RJL/NM

DATE: 10-19-2021
SCALE: AS SHOWN

PERMIT MAP TR-76
Map 11-Sheet 1

New Elk Coal Company LLC.