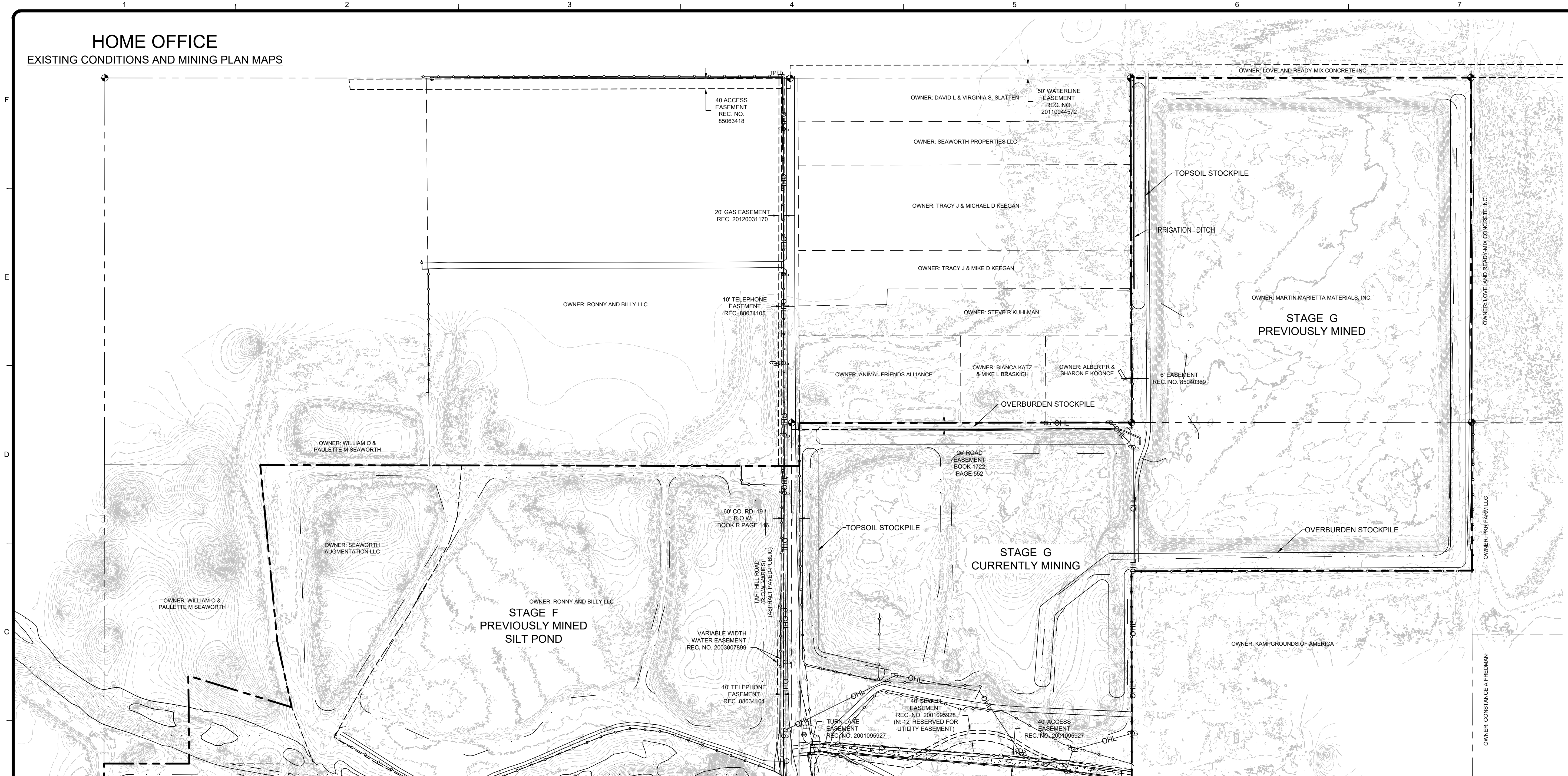
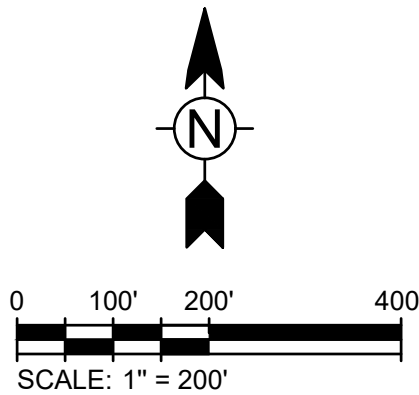


12/22/2021 4:45:28 PM - O:\PROJECTS\LONGMONT\117-8741002\CAD\SHEETFILES\C3-MINING.DWG - ANDRYAUSKAS, JEREMY



- LEGEND
- MINE PERMIT BOUNDARY
 - - - EASEMENT
 - - - EXISTING CONTOURS
 - - - EXISTING WETLAND BUFFER
 - - - ADJACENT PARCEL LINES
 - - - EXISTING FENCE
 - - - EXISTING EDGE OF ROAD
 - - - EXISTING OVERHEAD ELECTRIC LINE
 - - - OE
 - - - W
 - - - EXISTING WATER LINE



CERTIFICATION

THIS MAP WAS PREPARED BY TETRA TECH IN COOPERATION WITH AND UNDER THE DIRECT SUPERVISION OF MARTIN MARIETTA MATERIALS, INC. MARTIN MARIETTA MATERIALS, INC. WILL KEEP THE DIVISION OF RECLAMATION, MINING, AND SAFETY INFORMED OF ANY CHANGES TO THE MINING OR RECLAMATION PLANS THROUGH ANNUAL REPORTS AND FILE TECHNICAL REVISIONS OR AMENDMENT APPLICATIONS AS NECESSARY THROUGHOUT THE LIFE OF THE MINE.

Julie Mikulas
JULIE MIKULAS, MARTIN MARIETTA MATERIALS, INC. 12/23/2021

MATCHLINE SEE SHEET C4

MARK	DATE	DESCRIPTION	BY

MARTIN MARIETTA	
HOME OFFICE	
LARIMER COUNTY, COLORADO	
MINING PLAN	

PROJ:	117-8741002
DESN:	JJA
DRWN:	JJA
CHKD:	KKJ

C3

NOTE: DEPTH OF DEPOSIT IS APPROXIMATELY 15-20 FEET.

Bar Measures 1 inch, otherwise drawing not to scale



www.tetratech.com
1900 S. SUNSET STREET, SUITE 1-E
LONGMONT, COLORADO 80501
TEL: 303.772.5292

Copyright: Tetra Tech