



**Newmont Corporation**  
Cripple Creek & Victor Gold Mining Company  
100 North 3<sup>rd</sup> St  
P.O. Box 191  
Victor, CO 80860  
[www.newmont.com](http://www.newmont.com)

November 10, 2021

**ELECTRONIC DELIVERY**

Mr. Elliott Russell  
Environmental Protection Specialist  
Colorado Department of Natural Resources  
Division of Reclamation, Mining and Safety  
Office of Mined Land Reclamation  
1313 Sherman Street, Room 215  
Denver, Colorado 80203

**RE: Permit No. M-1980-244; Cripple Creek & Victor Gold Mining Company; Cresson Project;  
Schist Island Backfill Weekly Report**

Mr. Russell,

In accordance with Amendment Thirteen Second Adequacy Review Response, comment number 73; Newmont Corporation's Cripple Creek and Victor Gold Mining Company (CC&V) hereby provides a weekly report documenting backfilling activities completed in Schist Island during Week 9 of the project, covering the period from 10/23/21 to 10/29/21.

Should you require further information please do not hesitate to contact Katie Blake at 719-689-4048 or [Katie.Blake@Newmont.com](mailto:Katie.Blake@Newmont.com) or myself at [Justin.Raglin@Newmont.com](mailto:Justin.Raglin@Newmont.com).

Regards,

DocuSigned by:  
  
A5AA058117F54C4...

Justin Raglin  
Sustainability & External Relations Manager  
Cripple Creek and Victor Gold Mining Company

JR/jmr

EC: E. Russell – DRMS  
M. Cunningham – DRMS  
M. Crepeau – Teller County  
L. Morgan – Teller County  
J. Raglin – CC&V  
K. Blake – CC&V  
J. Ratcliff – CC&V

M. Bujenovic – CC&V  
N. Townley – CC&V  
J. Gillen - Geosyntec

Enc (1)  
WE2021.10.29 VLF2 Phase 3 Weekly Report

File: S:\CrippleCreek\na.cc.admin\Environmental\New File Structure\2-  
Correspondence\DNR\DRMS\2021\Outgoing

## ATTACHMENT 1

Newmont Mining Corporation  
 Cripple Creek & Victor Gold Mine  
 VLF2 Phase 3 Site Support 2021  
 NewFields Job No. 475.0106.053  
 Week Ending Friday, October 29, 2021



## FIELD WEEKLY PROGRESS REPORT

**PROJECT:** VALLEY LEACH FACILITY (VLF2) PHASE 3 CQA HIGH COMPACTION BACKFILL  
**SITE:** CRIPPLE CREEK & VICTOR GOLD MINE (COLORADO)  
**CONTRACTOR:** NEWMONT CC&V MINING OPERATIONS  
**WEEK ENDING:** FRIDAY, OCTOBER 29, 2021

**REPORTING PERIOD: 10.23.2020 THROUGH 10.29.2021**

Days	Sat	Sun	Mon	Tue	Wed	Thu	Fri
Work Shifts	D/N	D/N	D/N	D/N	D/N	D/N	D/N
D – DAYSHIFT		N – NIGHTSHIFT			W – WEATHER		

### AMBIENT TEMPERATURE RANGES:

*HIGHS:* 38°F TO 63°F

*LOWS:* 21°F TO 42°F

### WEATHER CONDITIONS:

*CLOUD COVER:* PARTLY CLOUDY

*PRECIPITATION:* TRACE SNOW 10/26

*WIND:* WIND GUSTS FROM 10 TO 40 MPH

### NEWFIELDS PERSONNEL ONSITE:

Personnel	Sat	Sun	Mon	Tue	Wed	Thu	Fri
	Oct 23	Oct 24	Oct 25	Oct 26	Oct 27	Oct 28	Oct 29
Tyler Wendlandt	-	LS	LS	LS	LS	LS	-
PR – Project Resident; LS – Lead Soils Technician; LG – Lead Geosynthetics; ST – Soils Technician; GT – Geosynthetics Technician; LT – Laboratory Technician; PCE – Project Certifying Engineer							

## 1.0 MINING OPERATIONS

### 1.1 Schist Island High Compaction Back Fill

CC&V began the placement of the 9910' elevation high compaction backfill lift. Material was loaded from the Schist Island Pit and West Cresson Pit and hauled by 793 haul trucks to the high compaction backfill. A D10 dozer placed the material in a 5' GPS controlled leading edge lift. The haulage traffic travelled over the entirety of the fill, splitting tracks with each loaded haul truck. The D10 leveled out the windrows along the pit wall and pushed structural material into any surface irregularities along the pit wall during the shift.



CC&V shovel and loader operators monitored the material size being sent to the high compaction backfill. Out of specification loads containing 2 foot plus sized material were sent to the ECOSA stockpile. 2 foot plus sized material that was not removed at the dig-face by the shovel or loader operators was removed by a D10 dozer during material placement. The oversize material was stockpiled by the dozer out of the way above the current lift on the haul road against the pit high wall. A 993 loader loaded a 777 haul truck with the unsuitable material and it was then hauled to the ECOSA stockpile.

## **2.0 MEETINGS AND COMMUNICATIONS**

NewFields personnel met daily with Mine Operations Supervision about the high compaction backfill progress and material quality.

NewFields personnel attended (WebEx) the weekly Schist 1 Backfill, Ridge Mining, and PSSA Construction Sync meeting on Wednesday, October 27<sup>th</sup> with representatives from Newmont Operations, Technical Services, Environmental, and NewFields. Items on the agenda included a safety/value share, progress updates, reporting, void planning, Turkey Ridge mining plan, and schedule concerns.

NewFields personnel attended the Schist Island Pit Backfill portion of the bi-weekly DRMS Inspection. NewFields personnel answered questions pertaining to project specifications and requirements during the inspection.

## **3.0 MISCELLANEOUS, ISSUES, AND CONCERNS**

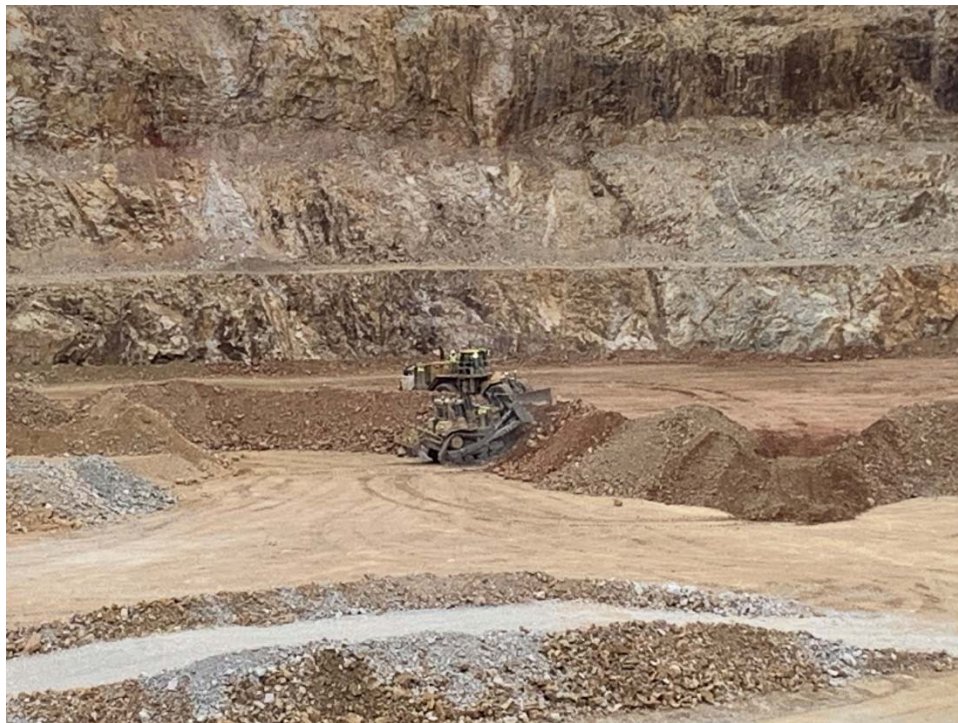
The Chevy Underground Working Remediation was damaged on Sunday, October 24, 2021. Newmont Mine Technical Services informed NewFields of the damage and an inspection was scheduled for Monday, October 25<sup>th</sup>, 2021. A D10 dozer had removed the select structural fill while cutting in a ramp for the 9910' lift and exposed the geogrid damaging it. The extents of the damage were inspected and surveyed. The area was not covered and is scheduled to be repaired on Monday, November 1, 2021.



## 4.0 PHOTOGRAPHS



**October 25, 2021 – Chevy Underground Working remediation exposed geogrid (TW)**



**October 26, 2021 – High Compaction Backfill oversized material removal (TW)**





**October 28, 2021 – High Compaction Backfill Progress (TW)**



**October 29, 2021 – High Compaction Backfill Progress (TW)**

Newmont Mining Corporation  
Cripple Creek & Victor Gold Mine  
VLF2 Phase 3 Site Support 2021  
NewFields Job No. 475.0106.053  
Week Ending Friday, October 29, 2021

**Report Review and Approval:**

Role	Name	Signature
<b>CQA Monitor/Report Prepared By</b>	<b>Tyler Wendlandt</b>	
<b><i>Or CQA Designee</i></b>		
<b>Project Engineer</b>	<b>Jeff Gaul</b>	
<b><i>Or Projects Designee</i></b>		

**Attachments:**

Figure 1 – High Compaction Fill Progress Aerial Photo





9910' High Compaction  
Backfill Placement Week  
Ending 10/29/2021

Chevy Underground  
Working Remediation

Figure 1: Aerial Progress Photo