



**Newmont Corporation**  
Cripple Creek & Victor Gold Mining Company  
100 North 3<sup>rd</sup> St  
P.O. Box 191  
Victor, CO 80860  
[www.newmont.com](http://www.newmont.com)

November 4, 2021

## **ELECTRONIC DELIVERY**

Mr. Elliott Russell  
Environmental Protection Specialist  
Colorado Department of Natural Resources  
Division of Reclamation, Mining and Safety  
Office of Mined Land Reclamation  
1313 Sherman Street, Room 215  
Denver, Colorado 80203

**RE: Permit No. M-1980-244; Cripple Creek & Victor Gold Mining Company; Cresson Project;  
Schist Island Backfill Weekly Report**

Mr. Russell,

In accordance with Amendment Thirteen Second Adequacy Review Response, comment number 73; Newmont Corporation's Cripple Creek and Victor Gold Mining Company (CC&V) hereby provides a weekly report documenting backfilling activities completed in Schist Island during Week 8 of the project, covering the period from 10/14/21 to 10/22/21.

Please note that during Week 8, backfill activities included completion of low compaction backfill and installation of high compaction test pads. This Week 8 submission includes the low compaction backfill weekly report prepared by CC&V Mine Technical Services (Attachment 1) and the initial high compaction backfill weekly report prepared by NewFields (Attachment 2).

The low compaction reporting period was defined as Thursday-Wednesday, and high compaction reporting period will transition to Saturday-Friday. To accommodate this transition, reports for Week 8 cover an 8-day period: Attachment 1 (10/14-10/20) and Attachment 2 (10/16-10/22).

Should you require further information please do not hesitate to contact Katie Blake at 719-689-4048 or [Katie.Blake@Newmont.com](mailto:Katie.Blake@Newmont.com) or myself at [Justin.Raglin@Newmont.com](mailto:Justin.Raglin@Newmont.com).

Regards,

DocuSigned by:  
  
5A3D013B629844B...

Justin Raglin  
Sustainability & External Relations Manager  
Cripple Creek and Victor Gold Mining Company

EC: E. Russell – DRMS  
M. Cunningham – DRMS  
M. Crepeau – Teller County  
L. Morgan – Teller County  
J. Raglin – CC&V  
K. Blake – CC&V  
J. Ratcliff – CC&V  
M. Bujenovic – CC&V  
N. Townley – CC&V  
J. Gillen - Geosyntec

Enc (2)  
20211020 DRMS Weekly Report – Low Compaction Zone  
WE2021.10.22 VLF2 Phase 3 Weekly Report

File: S:\CrippleCreek\na.cc.admin\Environmental\New File Structure\2-  
Correspondence\DNR\DRMS\2021\Outgoing

## ATTACHMENT 1



# Newmont CC&V

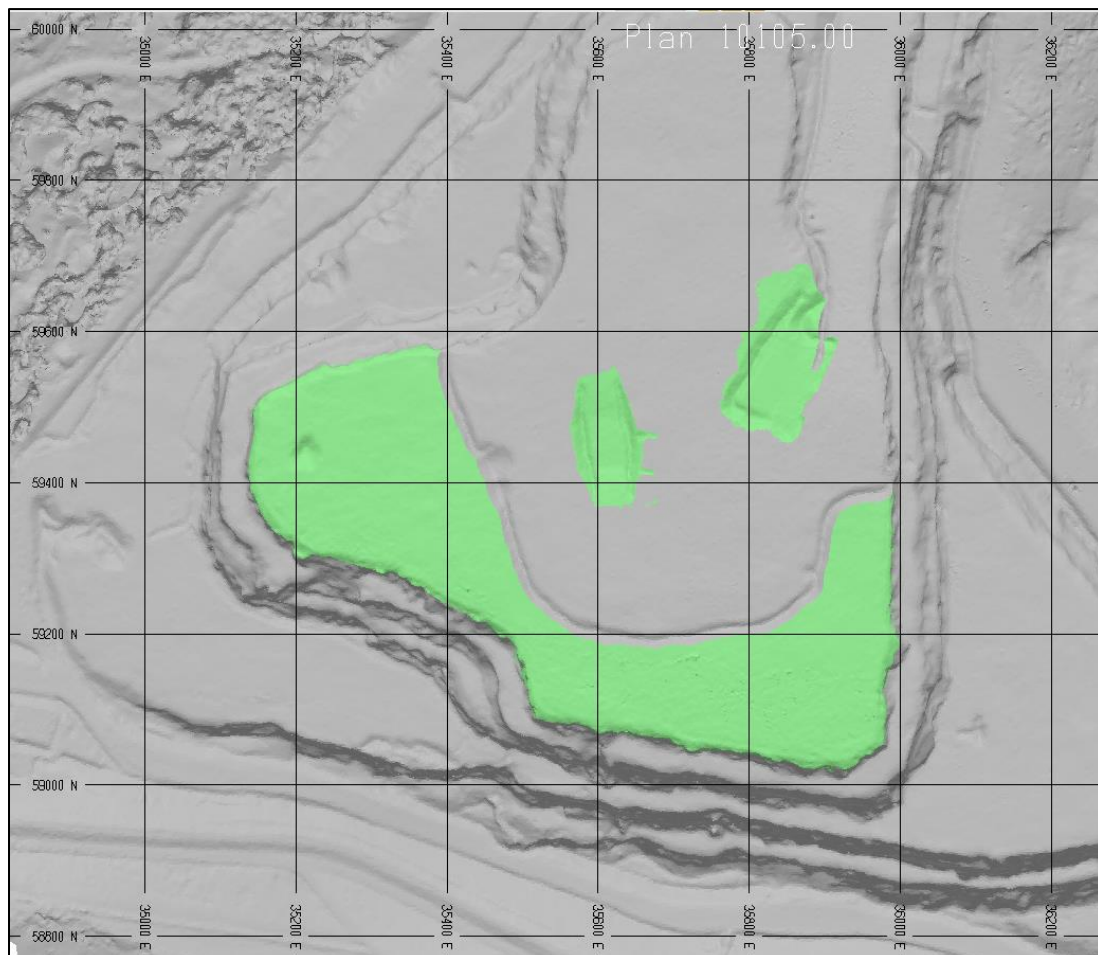
## VLF 2 Phase 3 Low Compaction Zone DRMS Weekly Report

Document No: NA-CCV-SER-FORM-XX  
 Function: S&ER  
 Effective Date: 04/01/20  
 Page No: Page 1 of XX

### 1. SHIFT REPORTS: .

Report Period: Thursday-Wednesday	Ambient Temperature		Weather Conditions
	High	Low	Precipitation
Date: 10/13/21 – 10/20/21	62	16	Yes
Observations & Comments	Completed the final low compaction lift on the 9505 and established the last high compaction test areas. Good rock/fines mix from South Cresson, West Cresson, and Schist Island phase 2.		

### 2. AREA OF BACKFILL: Dump progression map with shading for the areas where backfill was placed.





## Newmont CC&V

### VLF 2 Phase 3 Low Compaction Zone DRMS Weekly Report

Document No: NA-CCV-SER-FORM-  
XX  
Function:  
Effective Date: S&ER  
04/01/20  
Page No: Page 2 of XX

#### 3. ACTIVE BACKFILL AREA PHOTOGRAPH:



4. **PHOTOGRAPHIC GRAIN SIZE ANALYSIS:** Completed first week of each month for the month prior. For example: Completed first week of March for month of February.

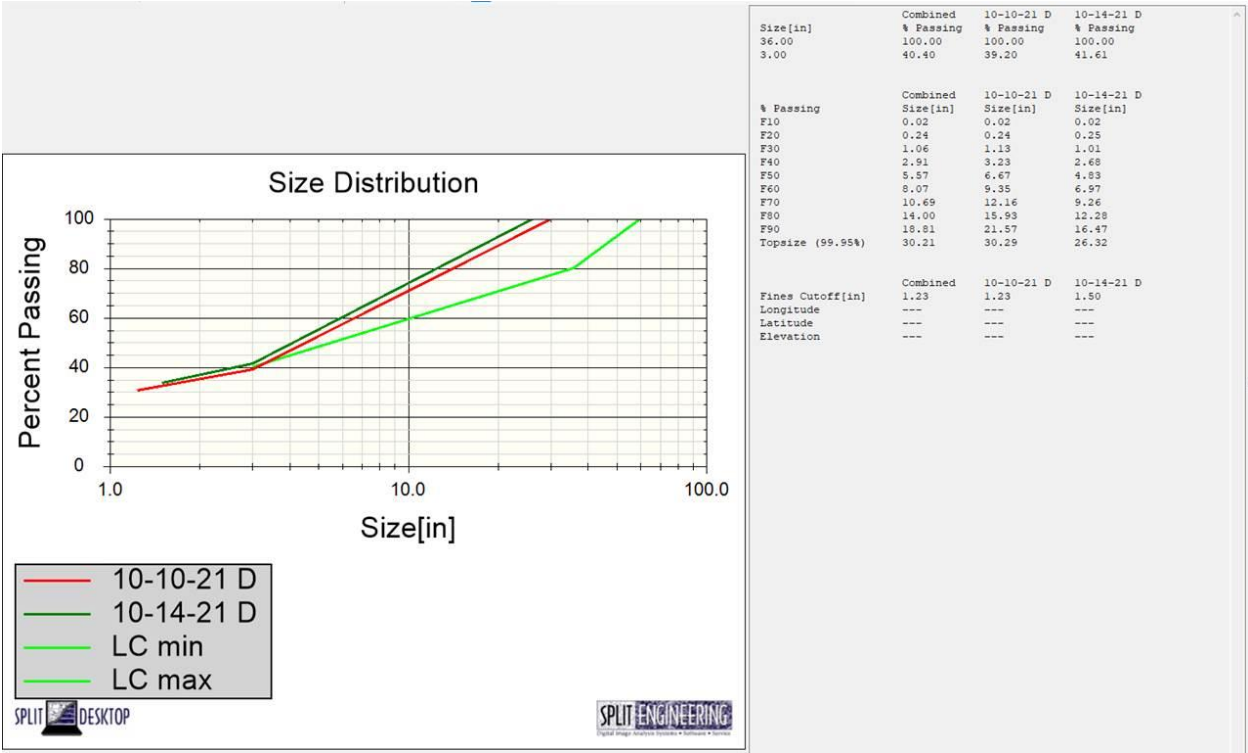


# Newmont CC&V

## VLF 2 Phase 3 Low Compaction Zone DRMS Weekly Report

Document No: NA-CCV-SER-FORM-XX  
Function: S&ER  
Effective Date: 04/01/20  
Page No: Page 3 of XX

U.S. Standard Sieve Size	Allowable Percent Passing by Dry Weight	Passing by Dry Weight
60- inch	100%	100%
36-inch	80-100%	100%
3-inch	40 -100%	40%



5. LIFT HEIGHT - NOT TO EXCEED 25FT IN LOW COMPACTION AREAS:

Lift height <= 25' ☒ Yes ☐ No



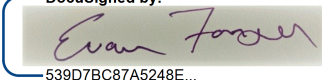




# Newmont CC&V

## VLF 2 Phase 3 Low Compaction Zone DRMS Weekly Report

Document No: NA-CCV-SER-FORM-XX  
 Function: S&ER  
 Effective Date: 04/01/20  
 Page No: Page 4 of XX

**6. APPROVALS:** Completed each week by assigned representative or designee.

Role	Name	Signature
Project Manager	Evan Fonger	DocuSigned by:  539D7BC87A5248E...
OR	Project Manager Designee: <u>Jeff Gaul</u>	
Tech Services/ CQA Monitor Manager	Brian Crawford	DocuSigned by:  0A16580526894D9...
OR	Tech Services Designee: <u>__ Vivek Galla __</u>	
S&ER Manager	Justin Raglin	
OR	S&ER Designee: <u>__ Katie Blake __</u>	DocuSigned by:  5A3D013B629844B...

## ATTACHMENT 2



Newmont Mining Corporation  
 Cripple Creek & Victor Gold Mine  
 VLF2 Phase 3 Site Support 2021  
 NewFields Job No. 475.0106.053  
 Week Ending Friday, October 22, 2021



## FIELD WEEKLY PROGRESS REPORT

**PROJECT:** VALLEY LEACH FACILITY (VLF2) PHASE 3 CQA HIGH COMPACTION BACKFILL  
**SITE:** CRIPPLE CREEK & VICTOR GOLD MINE (COLORADO)  
**CONTRACTOR:** NEWMONT CC&V MINING OPERATIONS  
**WEEK ENDING:** FRIDAY, OCTOBER 22, 2021

**REPORTING PERIOD: 10.16.2020 THROUGH 10.22.2021**

Days	Sat	Sun	Mon	Tue	Wed	Thu	Fri
Work Shifts	D/N	D/N	D/N	D/N	D/N	D/N	D/N
D – DAYSHIFT		N – NIGHTSHIFT			W – WEATHER		

### AMBIENT TEMPERATURE RANGES:

*HIGHS:* 46°F TO 55°F

*LOWS:* 26°F TO 40°F

### WEATHER CONDITIONS:

*CLOUD COVER:* PARTLY CLOUDY

*PRECIPITATION:* TRACE SNOW 10/19

*WIND:* WIND GUSTS FROM 10 TO 25 MPH

### NEWFIELDS PERSONNEL ONSITE:

Personnel	Sat	Sun	Mon	Tue	Wed	Thu	Fri
	Oct 16	Oct 17	Oct 18	Oct 19	Oct 20	Oct 21	Oct 22
Tyler Wendlandt		LS	LS	LS	LS	LS	
PR – Project Resident; LS – Lead Soils Technician; LG – Lead Geosynthetics; ST – Soils Technician; GT – Geosynthetics Technician; LT – Laboratory Technician; PCE – Project Certifying Engineer							

## 1.0 MINING OPERATIONS

### 1.1 High Compaction Back Fill

Mine operations and ForeSight West Survey completed the plug dump test fill within the high compaction fill limits (9910' lift). High Compaction backfill material was plug dumped by 793 haul trucks and placed in a GPS controlled 5-foot loose lift by a D10 dozer. Survey then placed a twenty-point control grid on the surface of the loose fill and took coordinates and elevations on each point. The test fill was then wheel rolled by a loaded 793 haul truck. Once the 793 had travelled over the entirety of the surface of the test fill twice (simulating a down and back pass), survey continued to take elevations on each point. This method continued until survey



determined that the settlement of the fill had stopped under the weight of the 793 haul truck during wheel rolling.

No other high compaction material was placed during the week.

## **2.0 NEWFIELDS ACTIVITIES**

NewFields personnel monitored the plug dump test fill during wheel rolling and survey activities.

NewFields personnel approved the surface of the low compaction backfill for the placement of the first high compaction lift. Two areas (including the footprint of the plug dump test pad) had been selected previously and surveyed, wheel rolled, and surveyed again to ensure a solid surface was in place for the placement of the first lift of high compaction fill. The foundation surface was rough due to the coarseness of the material and did not require ripping or any additional preparation.

## **3.0 MEETINGS AND COMMUNICATIONS**

NewFields personnel attended (Webex) the weekly Schist 1 Backfill, Ridge Mining, and PSSA Construction Sync meeting on Wednesday, October 20<sup>th</sup> with representatives from Operations, Technical Services, Environmental, and NewFields. Items on the agenda included a safety/value share, progress updates, reporting, DRMS inspection feedback, request for specification change with DRMS feedback, void planning, Turkey Ridge mining plan, and schedule concerns.

## **4.0 MISCELLANEOUS, ISSUES, AND CONCERNS**

No activity during this reporting period.



## 5.0 PHOTOGRAPHS



**October 18, 2021 – Material size on plug dump test fill with tape measure for scale (TW)**

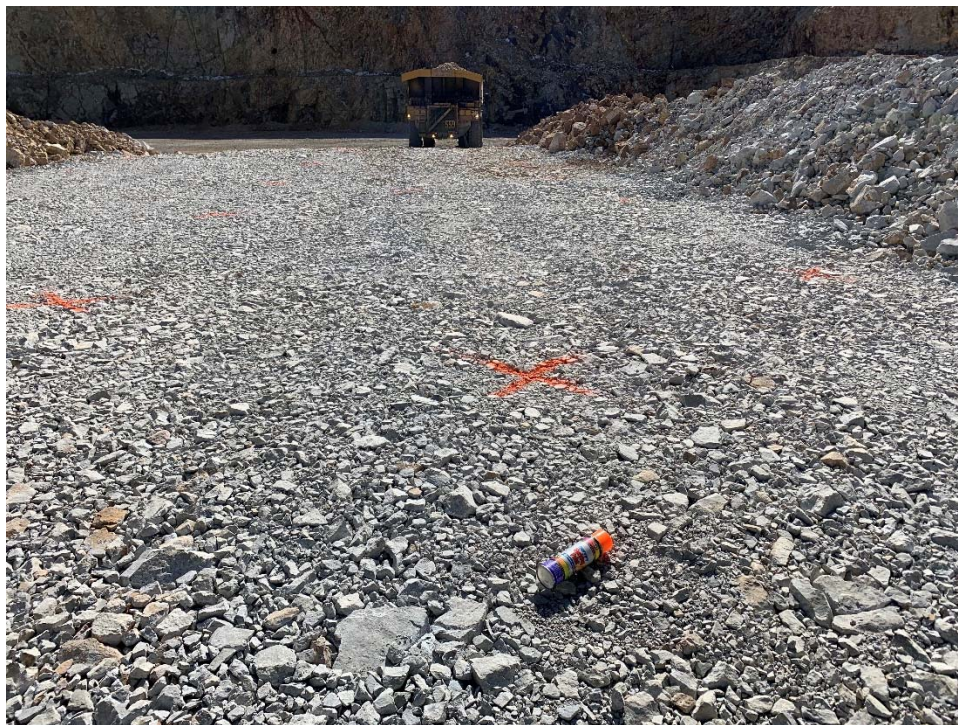


**October 18, 2021 – High Compaction Backfill Test Pad wheel rolling progress (TW)**



Newmont Mining Corporation  
Cripple Creek & Victor Gold Mine  
VLF2 Phase 3 Site Support 2021  
NewFields Job No. 475.0106.053  
Week Ending Friday, October 22, 2021

---



**October 18, 2021 – High Compaction Backfill Test Pad surface after wheel rolling with paint can for scale (TW)**

Newmont Mining Corporation  
Cripple Creek & Victor Gold Mine  
VLF2 Phase 3 Site Support 2021  
NewFields Job No. 475.0106.053  
Week Ending Friday, October 22, 2021

**Report Review and Approval:**

Role	Name	Signature
<b>CQA Monitor/Report Prepared By</b>	<b>Tyler Wendlandt</b>	
<b>Or CQA Designee</b>		
<b>Project Engineer</b>	<b>Jeff Gaul</b>	
<b>Or Projects Designee</b>		<div>DocuSigned by:  539D7B687A5248E...</div>

**Attachments:**

Figure 1 – High Compaction Fill Progress Aerial Photo





Plug Dump Test  
Fill Location

Figure 1 Aerial Progress Photo