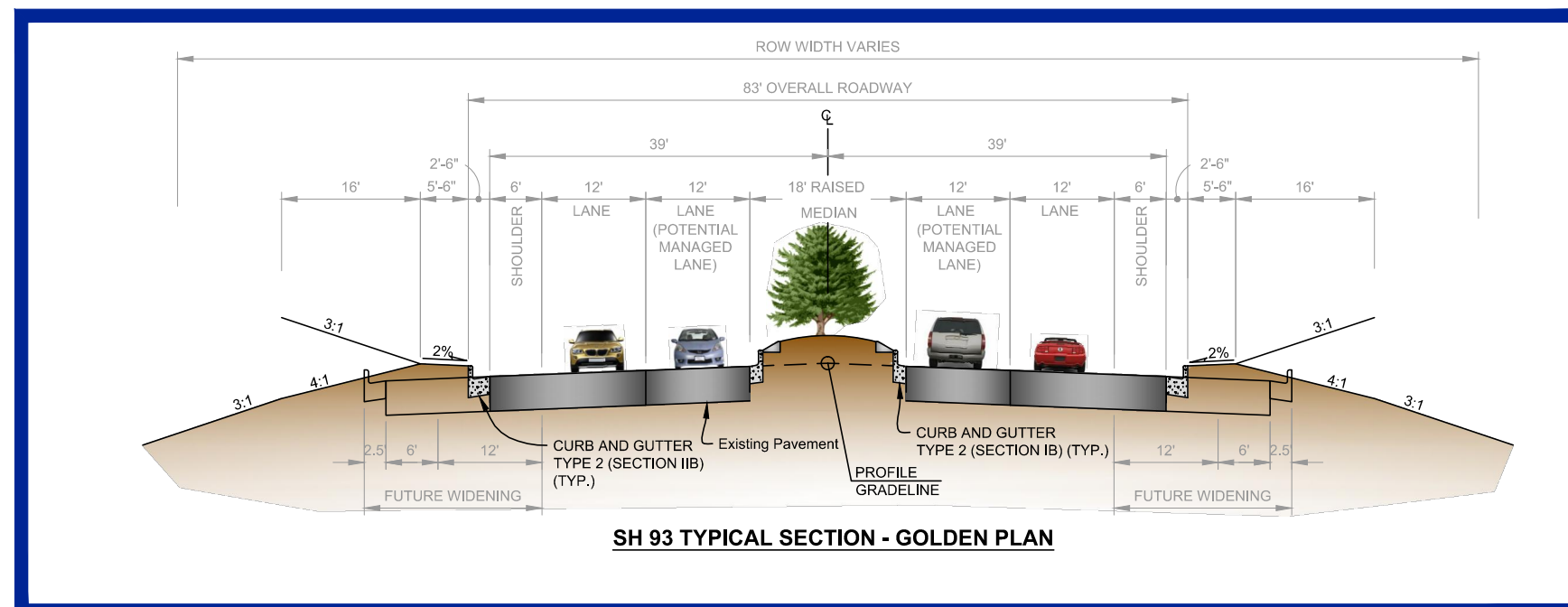
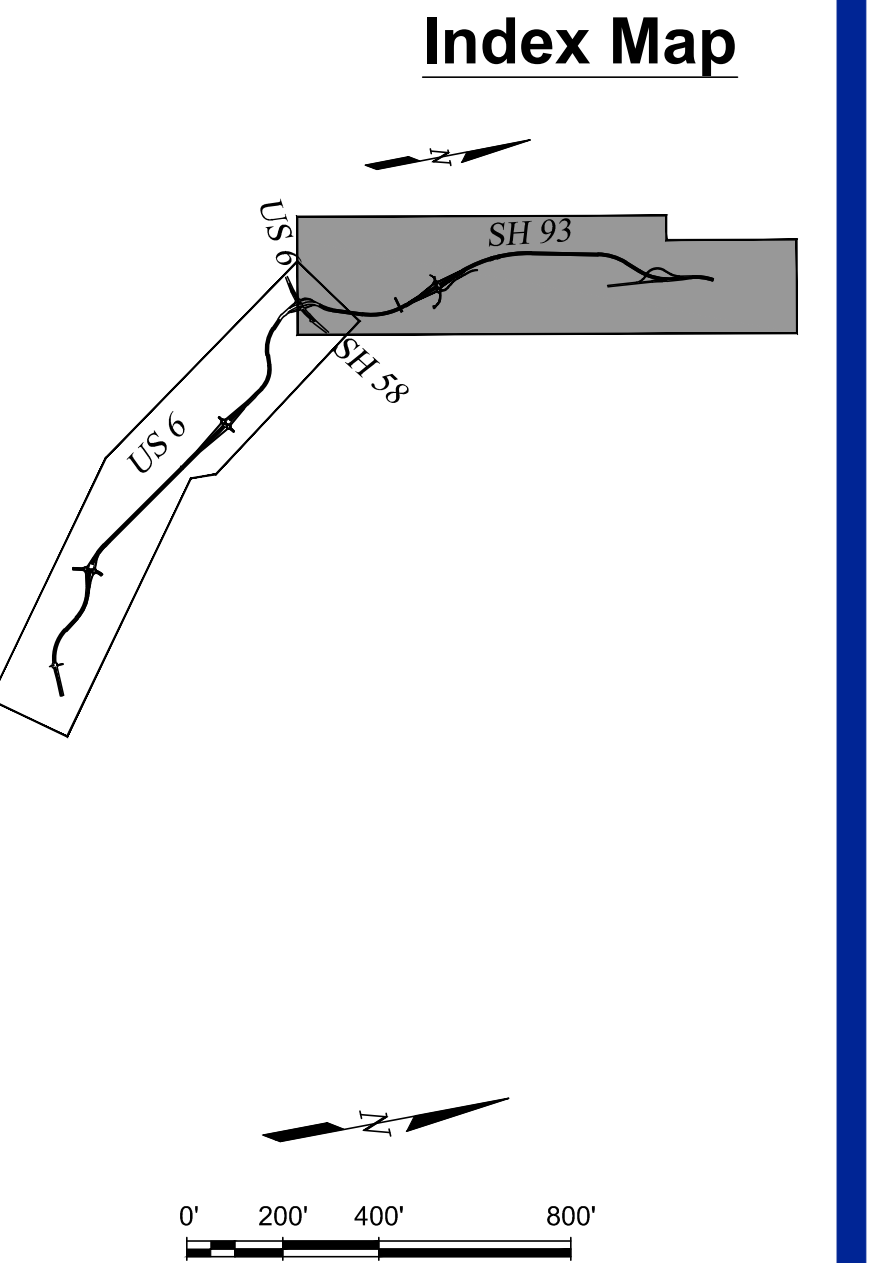
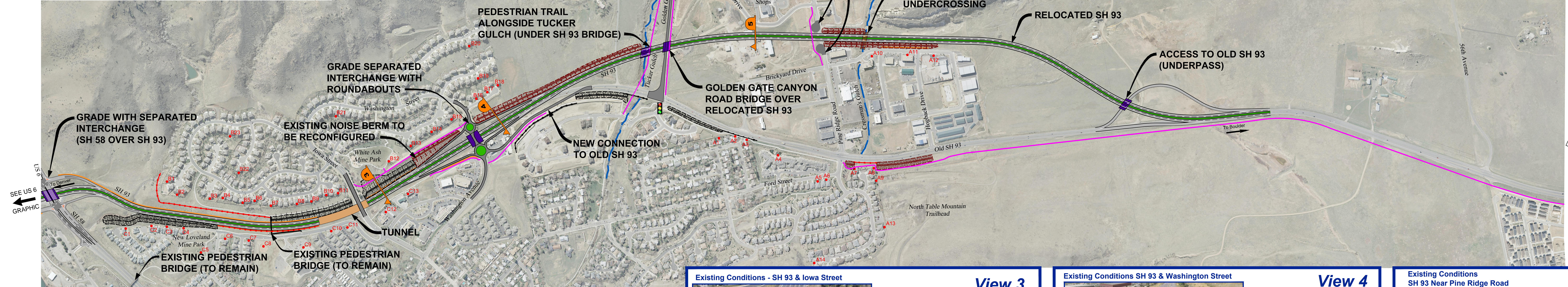


NOISE LEVEL TABLE				NOISE LEVEL TABLE				NOISE LEVEL TABLE				NOISE LEVEL TABLE			
Receiver Number		Day/Night Average Sound Level, $L_{Aeq}(dB)$		Receiver Number		Day/Night Average Sound Level, $L_{Aeq}(dB)$		Receiver Number		Day/Night Average Sound Level, $L_{Aeq}(dB)$		Receiver Number		Day/Night Average Sound Level, $L_{Aeq}(dB)$	
2002 Existing	2020 With Mitigation	2002 Existing	2020 With Mitigation	2002 Existing	2020 With Mitigation	2002 Existing	2020 With Mitigation	2002 Existing	2020 With Mitigation	2002 Existing	2020 With Mitigation	2002 Existing	2020 With Mitigation	2002 Existing	2020 With Mitigation
C11	58	58	58	B1	61	61	61	B12	64	64	64	A1	64	64	64
C2	58	59	59	B2	62	65	69	B3	64	68	59	A2	73	66	52
C3	58	59	59	B3	64	65	69	B4	64	67	55	A3	74	64	54
C4	60	64	56	B4	65	68	54	B5	64	67	55	A4	69	62	51
C5	60	64	56	B5	65	68	54	B6	64	67	55	A5	68	60	51
C6	58	62	54	B6	64	68	52	B7	64	67	55	A6	66	60	54
C7	60	63	54	B7	64	68	57	B8	64	67	57	A7	66	60	54
C8	60	63	55	B8	65	69	53	B9	61	64	55	A8	69	62	54
C9	59	63	51	B9	65	69	53	B10	58	61	53	A9	64	58	51
C10	61	63	51	B10	65	69	53	B11	58	61	53	A10	69	70	59
C11	62	66	66	B11	65	69	53	B12	53	57	52	A11	58	70	59
C12	62	66	66					B23	53	57	52	A12	58	67	57
C13	64	69	71									A13	58	54	50



MULLER

6 & 93 Corridor

