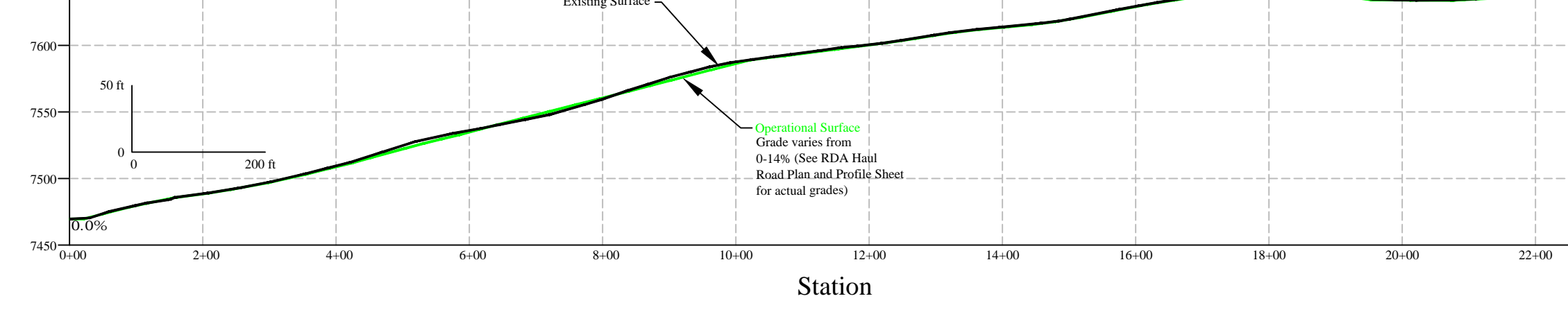
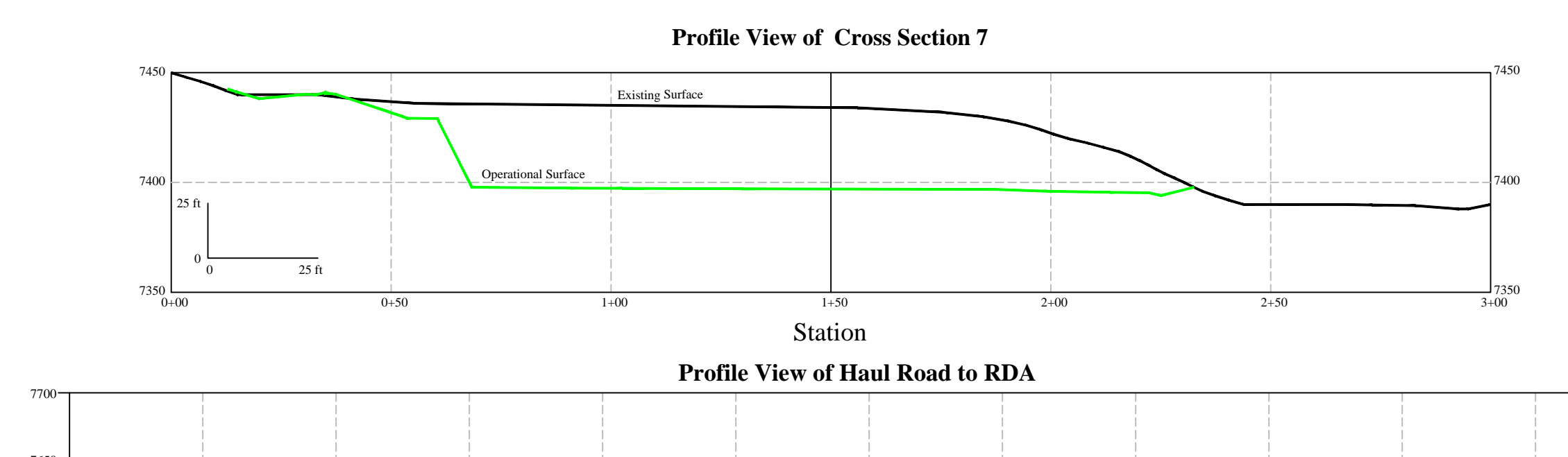
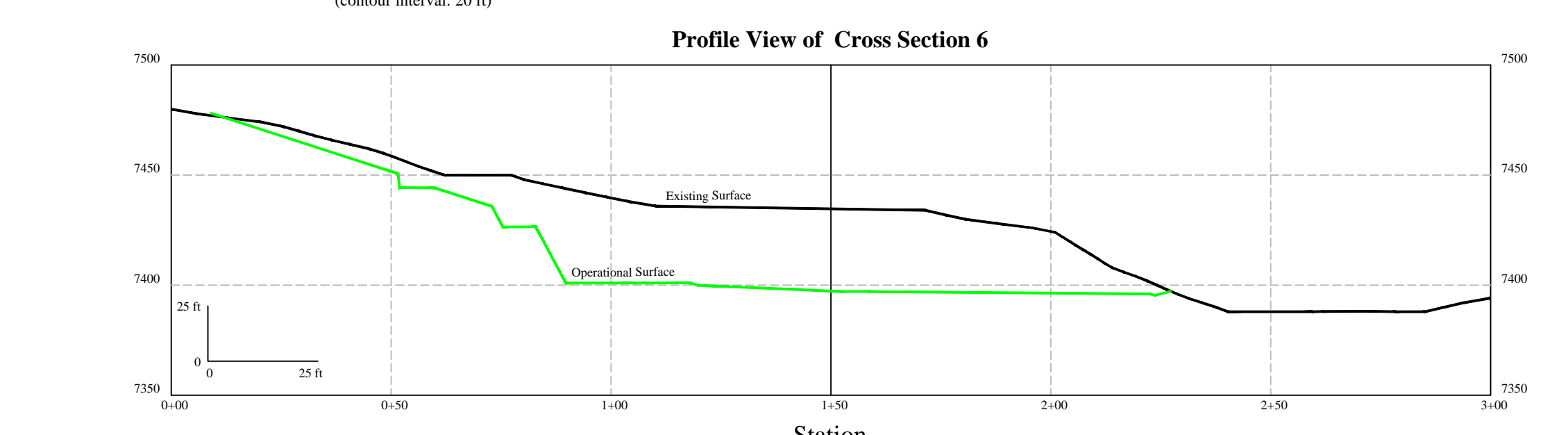
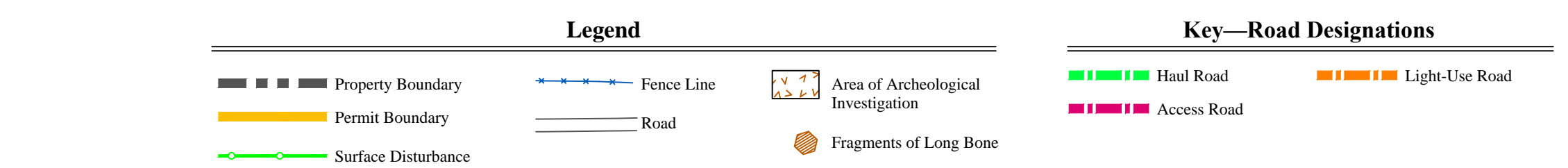
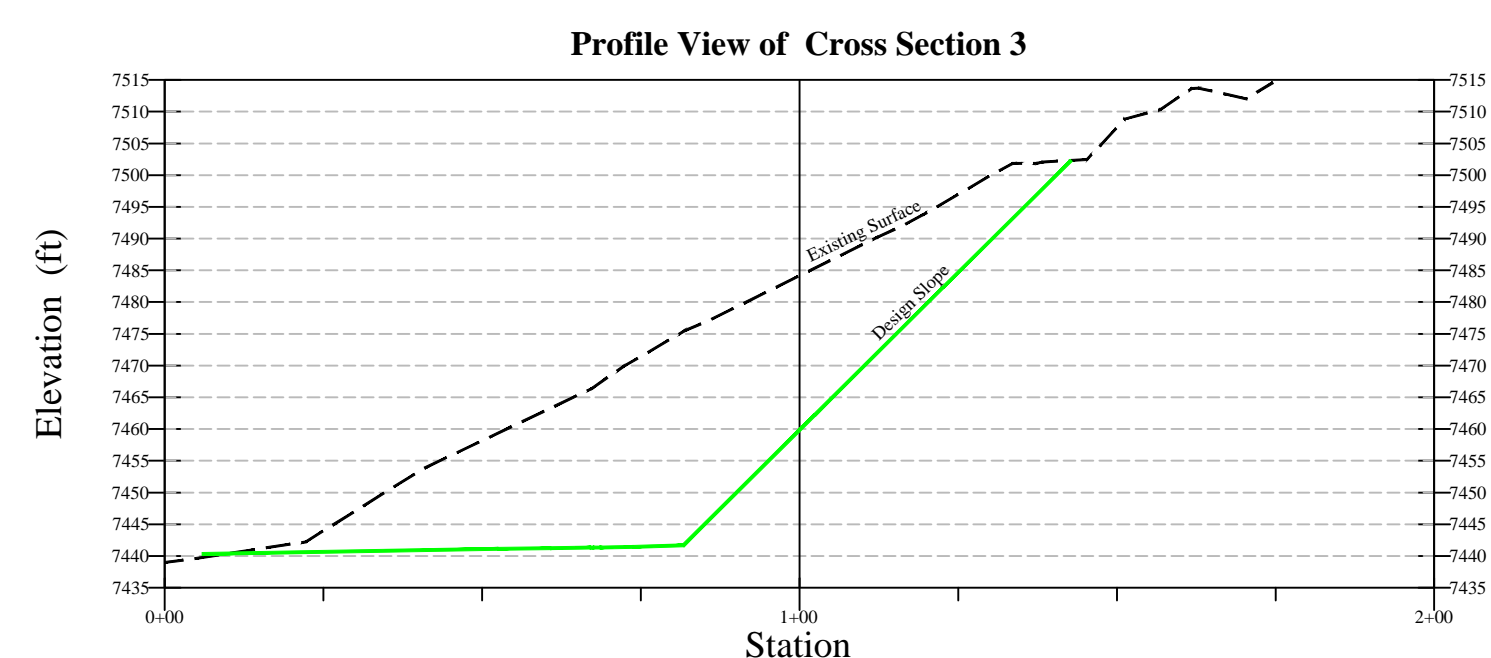
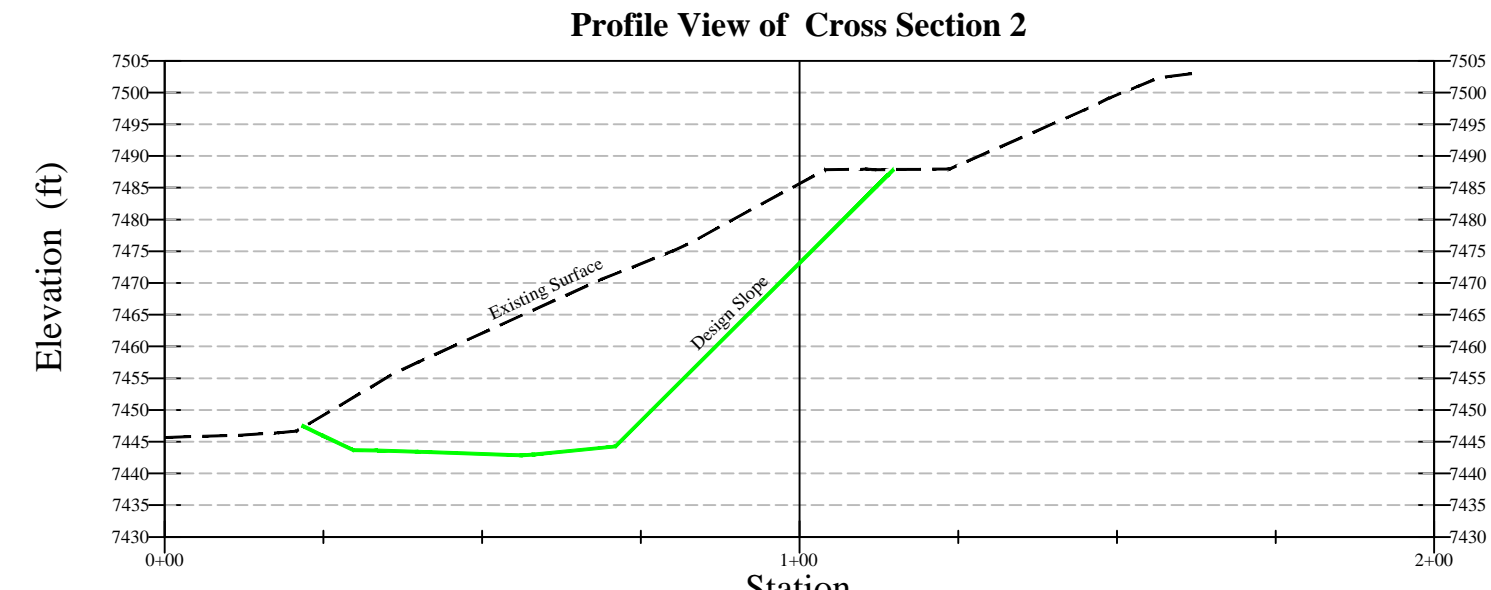
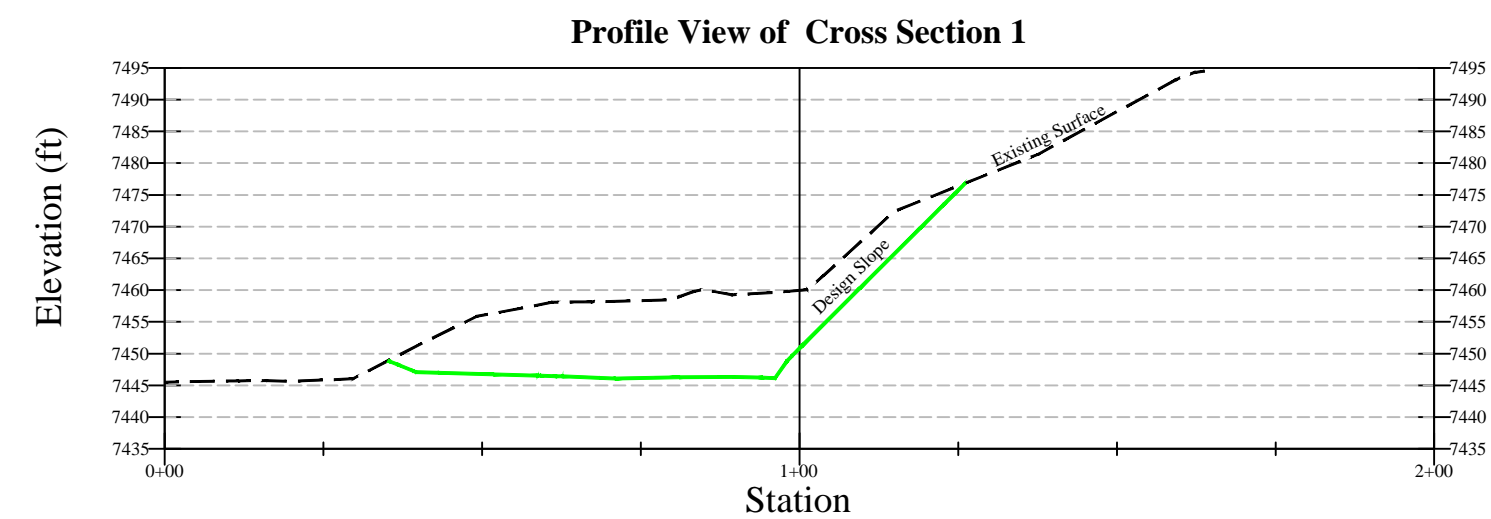
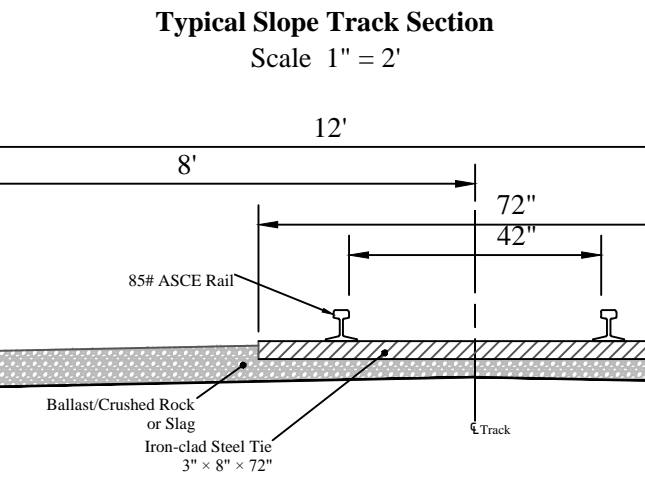
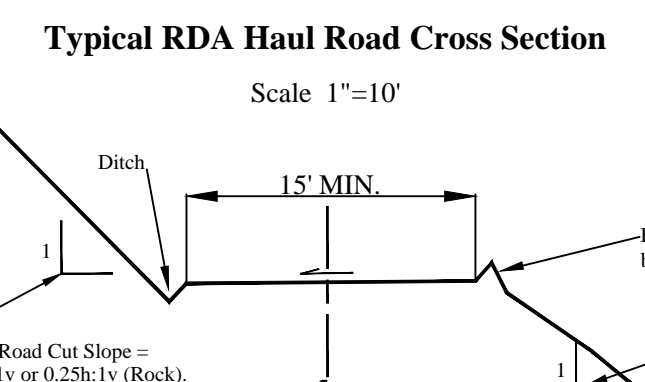
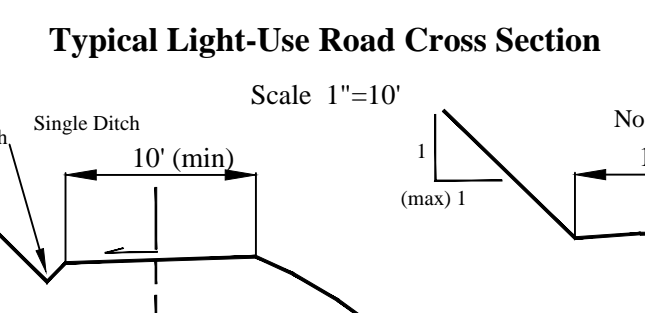
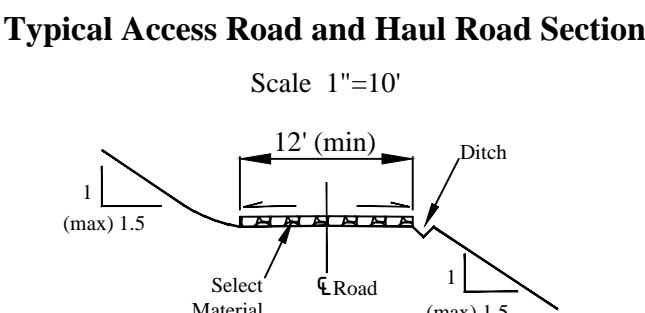
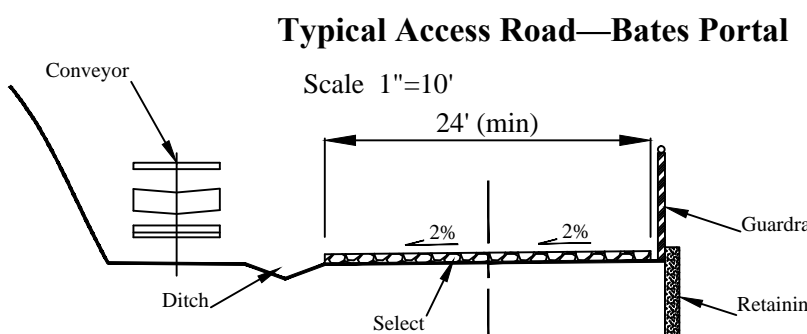
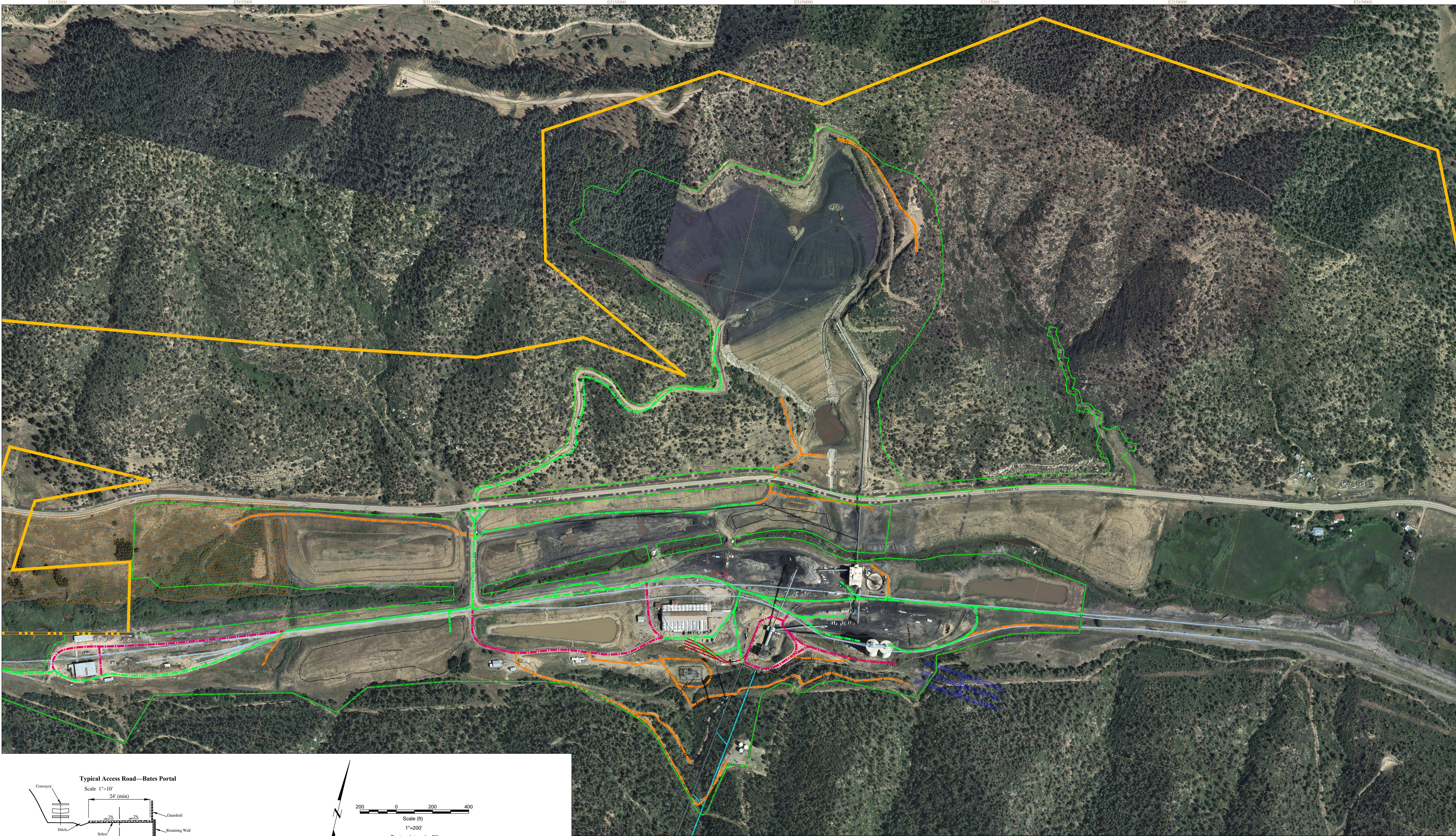


PLAN VIEW



Rev	Description	by	Date
1	Archaeological information	DMS	11/25/08
2	Updated, show coal and new coal stockpiles labeled	SAD	1/28/09
3	Raw coal knotted and built	DMS	5/19/07
4	Road to eastern typical stockpile area revised	TJA	7/26/07
5	Technical Review: Added haul road to raw and clean coal stockpile areas, revised access road north of Int. Bldg to a haul road	DMS	8/13/07
6	Revised access road to refuse area (near 1)	DMS	2/16/08
7	Road removed (approx. 1750 feet from mine entrance)	DMS	4/24/08
8	Permit renewal	DMS	10/11/08
9	Haul road north of mine added	DMS	11/14/08
10	Added steel post station, coal sample station, new truck dump, and temporary track dump, new stockpile pile. Expanded raw coal pile and clean coal pile with disturbed area boundary.	DF	1/22/09
11	Added temporary steel storage tank location and removal and relocation of oil storage tanks	DF	4/9/09
12	Added north addition to pump plant	DF	8/21/09
13	Added new refuse access road (near 1)	DF	8/25/09
14	Added refuse tank location	DF	11/13/09
15	Added haul road extension	DF	1/25/10
16	Added haul road extension, coal stockpile areas, and related culverts	DF	1/25/10
17	Added machine building access	DF	2/24/10
18	Added haul road extension near coal lab	DF	3/21/10
19	Changed general boundary, added development coal waste pile and storage treatment plant	BCS	2/26/10
20	Changed coal stockpile areas	BCS	5/11/10
21	Revised surface disturbance boundary	BCS	7/24/10
22	Revised refuse access road to a haul	BCS	9/7/10
23	Nothing recorded	BCS	8/9/10
24	Technical review: Updated with haul weight bin	BCS	8/9/10
25	Change access road to refuse area, north of development coal waste pile, near east entrance to mine and near bins house to light use haul road near close to access	BCS	12/4/10
26	Added raw coal stockpile site. Revised RDA road and culverts, added shower trailer	BCS	2/24/11
27	Added rail and surface tank and substation and material storage area revised S.D. boundary	BCS	3/22/11
28	Added intermediate storage area	BCS	3/22/11
29	Added well, surge and VES points	BCS	3/22/11
30	Added survey line, pump and train line location	BCS	5/26/11
31	Added rail unloading hopper with conveyor and closed haul tank with containment	BCS	6/29/11
32	Added surge and VES lines	BCS	6/29/11
33	Added pump house and culverts	BCS	10/12/11
34	Revised rail unloading hopper and conveyor	BCS	3/7/12
35	Added access to storage with containment	BCS	3/7/12
36	Added cover paths, enclosed and tank	DL	7/1/12
37	Revised intermediate storage area with updated stockpile #1	DF	11/6/12
38	Updated facility access	JKH	10/17/12
39	Added maintenance corridor	JKH	9/1/12
40	Revised rail unloading system, added substation, extend clean coal tunnel	BCS	8/16/11
41	Revised raw coal stockpile	BCS	10/12/11
42	Revised raw coal stockpile, revised haul road to old truck dump location. Removed substation (Per 40) and access road west of coal lab	BCS	1/23/13
43	Change surface pump location	BCS	8/24/10
44	Added facility	BCS	10/17/10
45	Added 50 Temporary Storage Facilities	BCS	1/11/11
46	MB-10 Temporary Storage Facilities	BCS	8/26/11
47	MB-10 Temporary Storage Facilities	BCS	8/26/11
48	TR-54 Surface Facilities	BCS	12/10/11
49	TR-54 Surface Facilities	BCS	12/10/11
50	TR-54 Surface Facilities	BCS	12/10/11
51	TR-54 Surface Facilities	BCS	12/10/11
52	TR-54 Surface Facilities	BCS	12/10/11
53	TR-54 Surface Facilities	BCS	12/10/11
54	TR-54 Surface Facilities	BCS	12/10/11
55	TR-54 Surface Facilities	BCS	12/10/11
56	TR-54 Surface Facilities	BCS	12/10/11
57	TR-54 Surface Facilities	BCS	12/10/11
58	TR-54 Surface Facilities	BCS	12/10/11
59	TR-54 Surface Facilities	BCS	12/10/11
60	TR-54 Surface Facilities	BCS	12/10/11
61	TR-54 Surface Facilities	BCS	12/10/11
62	TR-54 Surface Facilities	BCS	12/10/11
63	TR-54 Surface Facilities	BCS	12/10/11

- Notes:
- Map Grid—State Plane Zone 0503 NAD83
 - Inset 1 shows the area just north of the refuse dam
 - Aerial photography—August 2010
 - Surface contours—August 2010

New Elk Mine Site Plan


East Portal

Roads, Slope Track, and Cut Ar

DESIGNED BY: *
DRAWN BY: JT/RJL/NM

DATE: 10-19-2021
SCALE: AS SHOWN

PERMIT MAP MR-129
Map 11-Sh

New Elk Coal Company LLC