

STATE OF  
COLORADO

Cazier - DNR, Tim &lt;tim.cazier@state.co.us&gt;

---

**Daniels Sand Pit 2, Permit No. M-1973-007-SG: Monthly Monitoring Report**

1 message

---

**Jeremy PRITCHETT** <jeremy.pritchett@lafargeholcim.com>  
To: "Cazier - DNR, Tim" <tim.cazier@state.co.us>

Thu, Oct 14, 2021 at 2:48 PM

Hi Tim,

Attached is the Daniels Pit 2 monthly slope stability monitoring report for October, 2021. Please let me know if you have any questions.

Thanks,

--

**Jeremy Pritchett** | Environmental and Land Manager  
LafargeHolcim | Aggregate Industries  
Address: [1687 Cole Blvd., Suite 300 Golden, CO 80401](#)  
Office & Mobile: (970) 396-5252  
Email: [Jeremy.Pritchett@lafargeholcim.com](mailto:Jeremy.Pritchett@lafargeholcim.com)**Daniels Sand Pit 2 - October 2021 Observation .pdf**  
2108K



October 10, 2021  
Project No.: 19125

2750 S. Wadsworth Blvd, Suite D-200  
Lakewood, Colorado 80227  
303.625.9502  
[www.LithosEng.com](http://www.LithosEng.com)

Aggregate Industries – WCR, Inc  
1687 Cole Boulevard, Suite 300  
Golden, CO 80401

Attention: Jeremy Pritchett  
Environmental and Land Manager

Regarding: Daniels Sand Pit 2, Permit No. M-1973-007-SG  
Slope Stability Monthly Monitoring Report

Mr. Pritchett,

Lithos Engineering (Lithos) has been retained by Aggregate Industries to implement a slope stability monitoring plan for the Fountain Mutual Ditch within Daniels Sand Pit 2. Monthly monitoring will occur for the first year after construction completion. Lithos Engineering (Lithos) visited the site on October 8, 2021, and was escorted by Grant Smith (Daniels Sand Plant Manager). Site notes and photographs are presented below:

- Weather: 61-79°, partially cloudy, wind 5-10 mph
- Visual observation of the Fountain Mutual Ditch:
  - No tension cracks
  - No toe erosion
  - No moisture changes, ditch is dry
  - No sloughed slope surfaces



Photo 1. Fountain Mutual Ditch looking west



Photo 2. Fountain Mutual Ditch looking east



Photo 3. Fountain Mutual Ditch looking north

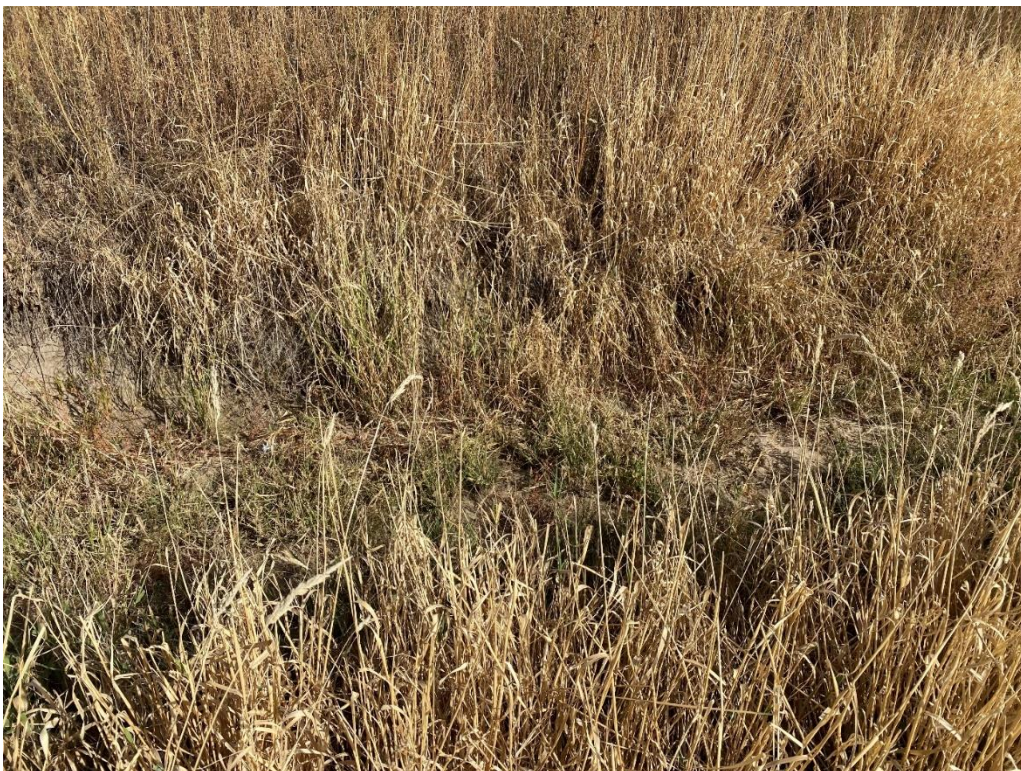


Photo 4. Fountain Mutual Ditch invert

- Construction sequence discussion
  - At this time, the buttress slope varies from 3H:1V to 4H:1V
  - Preparation for final lift
    - Stockpiled sand located at crest of embankment for the whole length
    - Will be completed within the next few weeks
    - Working on obtaining materials for seeding



Photo 5. Stockpiled sand for final lift, access road and ditch (looking west)



Photo 6. Stockpiled sand for final lift

If you have any questions regarding the contents of this report, please contact Aggregate Industries or Lithos Engineering.

Sincerely,

**Lithos Engineering**



Steve Kuehr, PE  
Senior Consultant

A handwritten signature in blue ink that reads "Sarah Myers".

Sarah Myers, EIT  
Project Engineer