

SENT VIA ELECTRONIC MAIL

August 6, 2021

Mr. Elliott Russell
Environmental Protection Specialist
Colorado Department of Natural Resources
Division of Reclamation, Mining and Safety
Office of Mined Land Reclamation
1313 Sherman Street, Room 215
Denver, Colorado 80203

Re: Permit No. M-1980-244; Cripple Creek & Victor Gold Mining Company (“CC&V”); Cresson Project – Written Release Notification – Significant Stormwater Event – August 3, 2021

Dear Mr. Russell:

In accordance with Rule 8, Section 8.2.3 of the Mineral Rules And Regulations of the Colorado Mined Land Reclamation Board For Hard Rock, Metal, And Designated Mining Operations (Rules), the Cripple Creek and Victor Gold Mining Company (CC&V) hereby provides the Division of Reclamation, Mining and Safety (Division) with a formal report regarding the release of crushed leach material from the Arequa Gulch Valley Leach Facility (AGVLF or VLF1), which occurred on the evening of August 3, 2021.

The following points address the requirements of Rule 8, section 8.2.3:

a. Actions taken to respond to and correct the emergency situation or condition

- At approximately 5:00pm on August 3, 2021, the CC&V site experienced an intense stormwater event during which 1.47 inches of rainfall was recorded over a span of 12 hours. At approximately 5:00pm on August 3, leach pad operators began to observe impacts of this rainfall including:
 - Washout of crushed leach material from VLF1 Phase IV, over established edge of liner and onto unlined areas.
 - Slope washouts on two areas of the VLF2 facility.
 - Slope washout on VLF1 Phase V.
- Immediate notification process was initiated to notify supervisors, environmental, and geotechnical personnel.
- A damage assessment was conducted, documenting all instances of water management control failure. The Engineer of Record for VLF's conducted a preliminary analysis of conditions on August 4.
- CC&V is currently in the process of excavating off-liner impacted material and transporting soil material to lined portions of VLF1.

- Temporary stormwater flow controls will be installed to mitigate of further damage to impacted areas (washouts and VLF1 breach areas).

b. Any known or adverse impacts to human health, property or the environment

No impacts to human health or the environment were observed or are expected to occur due to the containment of water and leach material within the operational boundary, and the rapid clean-up and removal of potentially impacted soil.

c. CC&V Contact

For any further information regarding this event please contact;
Justin Raglin Office: 719-689-4042
Senior Environmental Manager Cell: 775-934-9652
PO Box 191, Email: Justin.Raglin@newmont.com
100 N 3rd St,
Victor, Colorado, 80860

d. Monitoring and analyses that are necessary to evaluate the situation and corrective actions

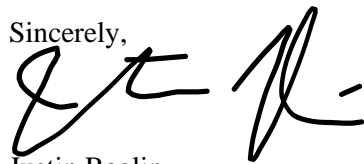
Soil and water samples were collected at impacted areas for further analysis. Water samples from the 'Point of Breach #2' were collected during the event and analyzed in CC&V's on-site laboratory for Total Cyanide. No cyanide was detected in this preliminary analysis.

e. Results of the Operator's Investigation

Preliminary investigation activities indicate existing surface water management controls were unable to contain the intense precipitation event following a period of above normal precipitation. Improvements to stormwater controls, including stormwater underdrains, are currently being investigated and considered to prevent similar events from occurring in the future.

Should you require further information please do not hesitate to contact Branden Rising at 719.689.4083 or Branden.Rising@newmont.com or myself at 719.689.4042 or Justin.Raglin@Newmont.com.

Sincerely,



Justin Raglin
Sustainability & External Relations Manager
Cripple Creek and Victor Gold Mine

JR/br

ec: Michael Cunningham – DRMS
Norma Townley – CC&V
Jeana Ratcliff – CC&V



CC&V VLF Stormwater Event

8/3/2021

EVENT OVERVIEW

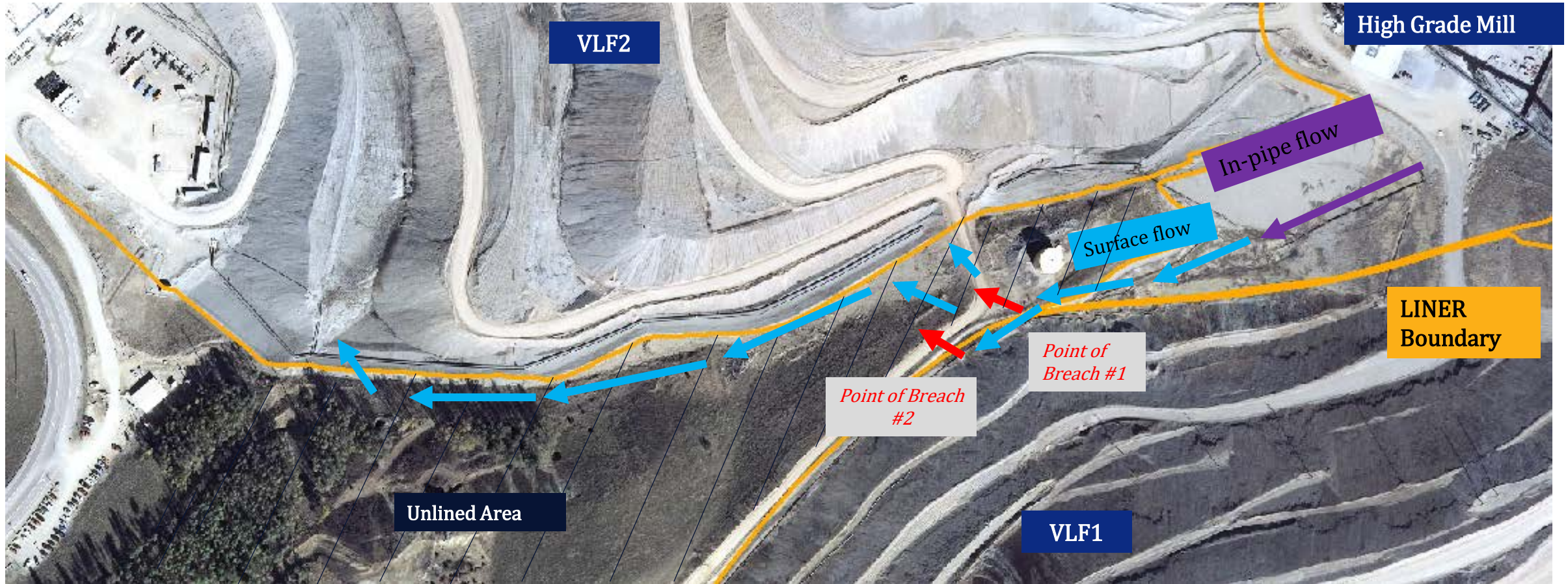


HEADING	INFORMATION
EVENT DESCRIPTION	At Approx. 5:00 P.M. on August 3 rd , 2021, CC&V experienced a significant rain event (1.47 in.) producing significant stormwater runoff. During the event, a surge of stormwater from the mill liner area inundated water management controls and allowed stormwater that had contacted process material to discharge off secondary containment. All solution and material remained on-site and within the operational boundary.
EVENT CONTEXT	CC&V has experienced well above average rainfall this summer. Measured rainfall in July was 200% of average. The mill stormwater discharge design allows for co-mingling of stormwater and process material/solution. An unlined area exists between VLF 1 and VLF 2 where solution and material was discharged. Material and solution eventually reported back to ADR 2 containment.
IMMEDIATE ACTIONS	Environmental and Geotechnical representatives were notified of the event. A damage assessment was conducted, documenting all instances of water management control failure. Stormwater discharged from secondary containment was sampled. Cyanide was not detected in preliminary analysis. Samples of spent leach material discharged from secondary containment were collected for further analysis. Temporary repairs to water management controls are ongoing.

Impacted Locations



HGM/VLF1 Area of Impact



Sample Locations:



Photos





Stormwater Event at CC&V

Justin Raglin <Justin.Raglin@newmont.com>

Fri, Aug 6, 2021 at 2:41 PM

To: "Russell - DNR, Elliott" <elliott.russell@state.co.us>

Cc: Michael Cunningham <michaela.cunningham@state.co.us>, Jeana Ratcliff <Jeana.Ratcliff@newmont.com>, Branden Rising <Branden.Rising@newmont.com>, Norma Townley <Norma.Townley2@newmont.com>

Hi Elliot,

Please see the attached event follow up notification per rule 8.2.3 and supporting powerpoint.

Please let us know if you have any additional questions.

Thanks,

Justin

Get [Outlook for iOS](#)

[Quoted text hidden]

2 attachments



Event Summary_DRMS_.pptx

8421K



06Aug2021_Stormwater Event Notification.pdf

183K