



File Code: 2810
Date: July 2, 2021

Jeff Carter
SSG Mining, Inc.
15954 Jackson Ck Pkwy B281
Monument, CO 80132

Dear Mr. Carter:

On June 9, 2021, Nicole Malandri, Lands and Mineral Staff, conducted an inspection of the Lombard #4 and #5 sites. At that time, the Lombard #5 adit had not been opened. The following items were discussed:

- There was a small rock fall at the Lombard #4 adit opening. When the adit is reopened a bat gate will need to be installed to replace the current adit closure. A sample design has been provided.
- All human waste must be transported off NFS land and disposed of in accordance with state and local regulations.
- The operator will use spill pads when pouring fuel or other petroleum products into tanks or other containers, to contain any spillage before it reaches the soil or water.

If you have any questions, please contact Nicole Malandri, Lands and Mineral Staff at the Clear Creek Ranger District, by phone at 720-667-9280, and/or by email at nicole.malandri@usda.gov.

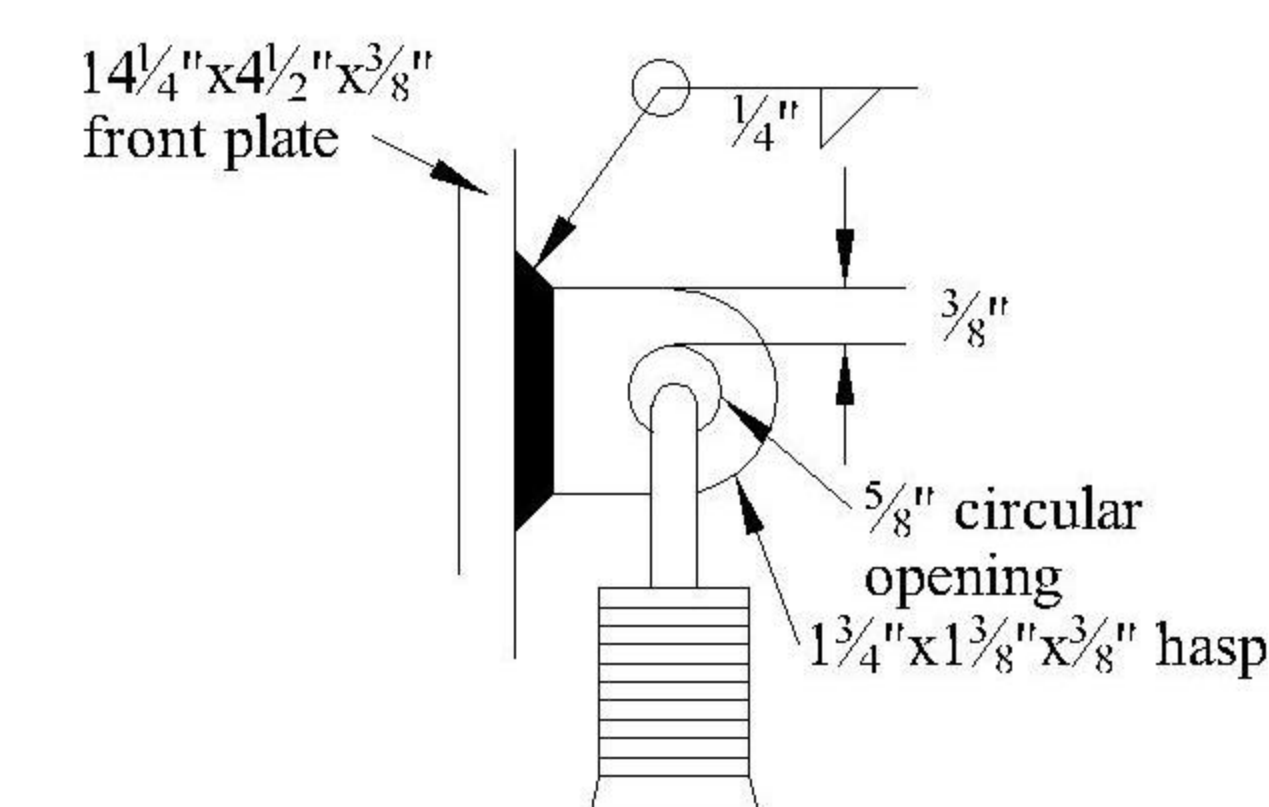
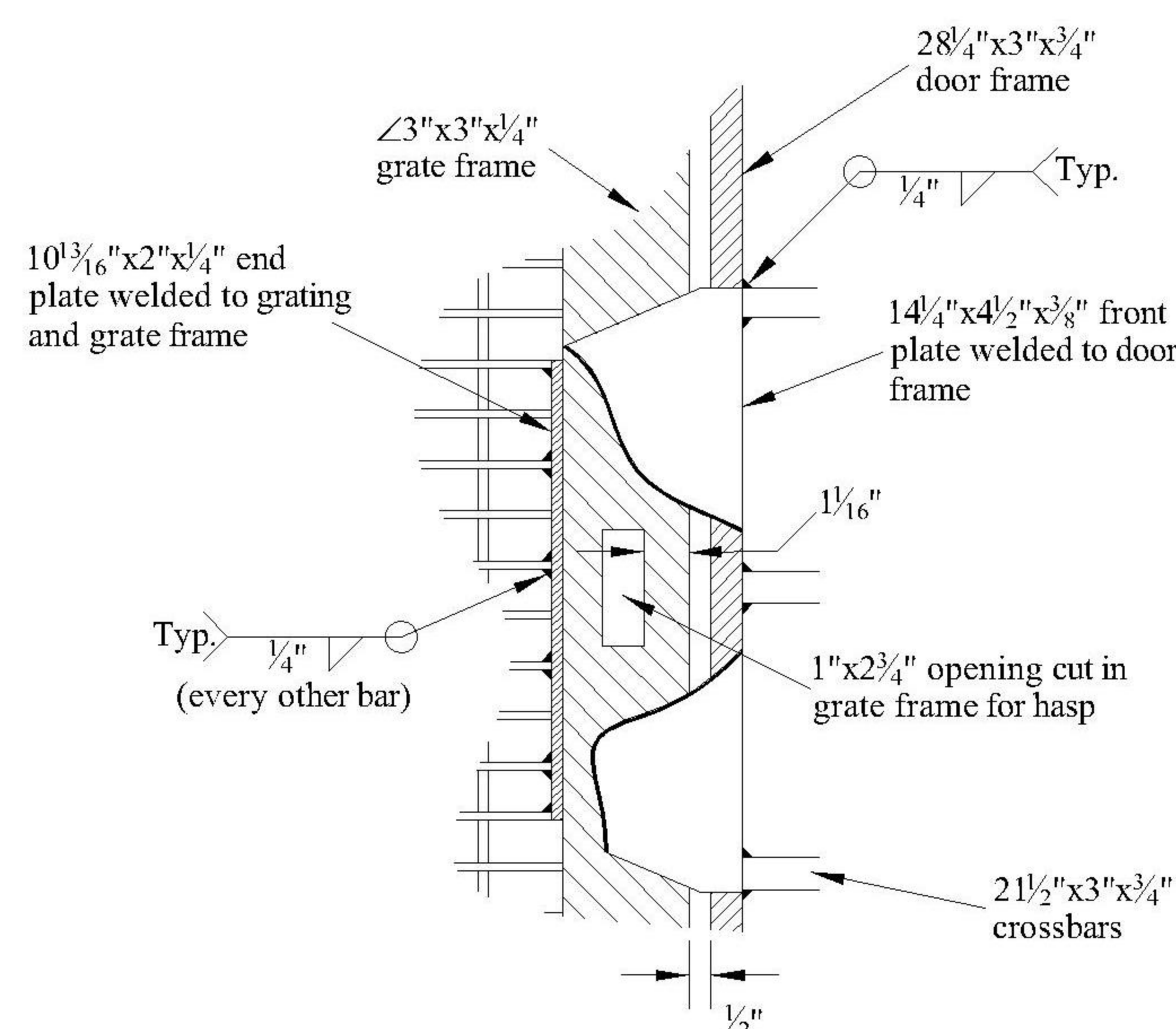
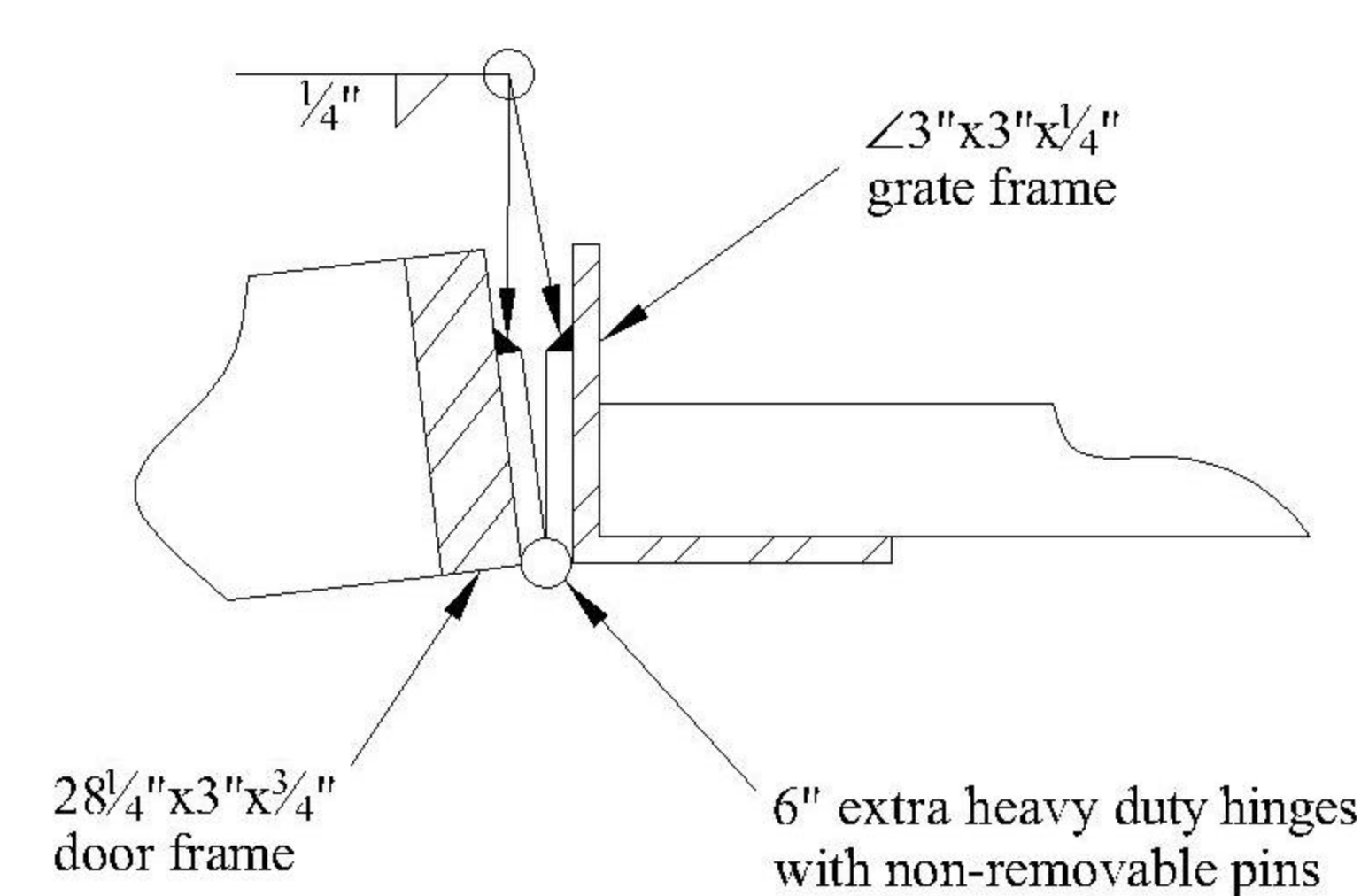
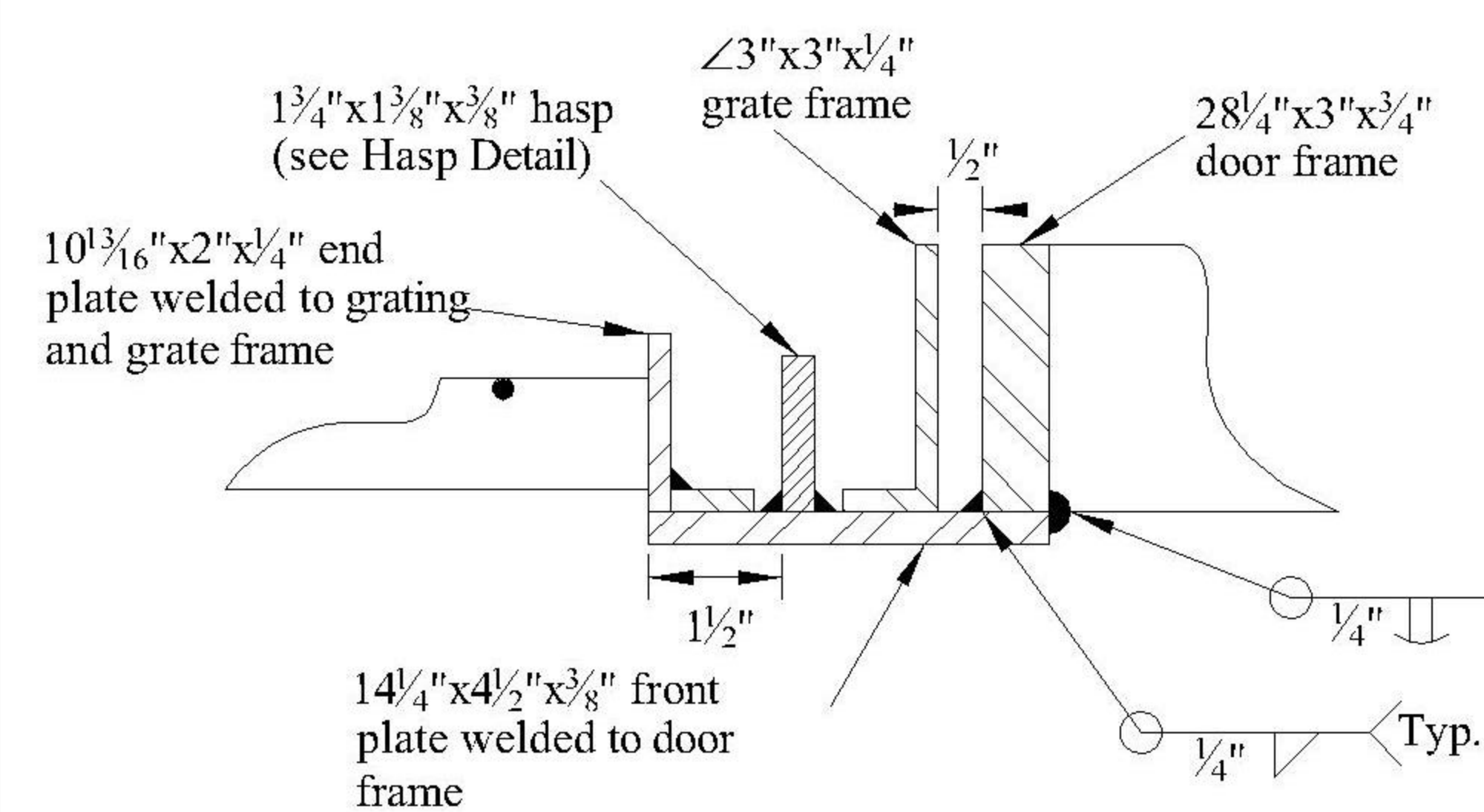
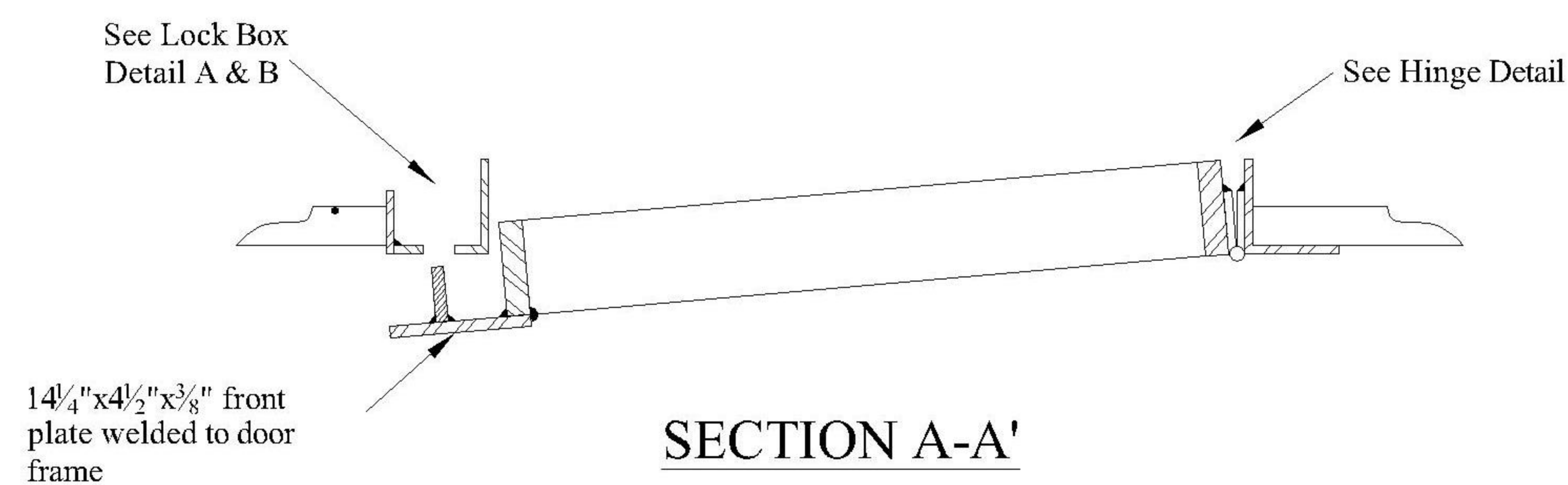
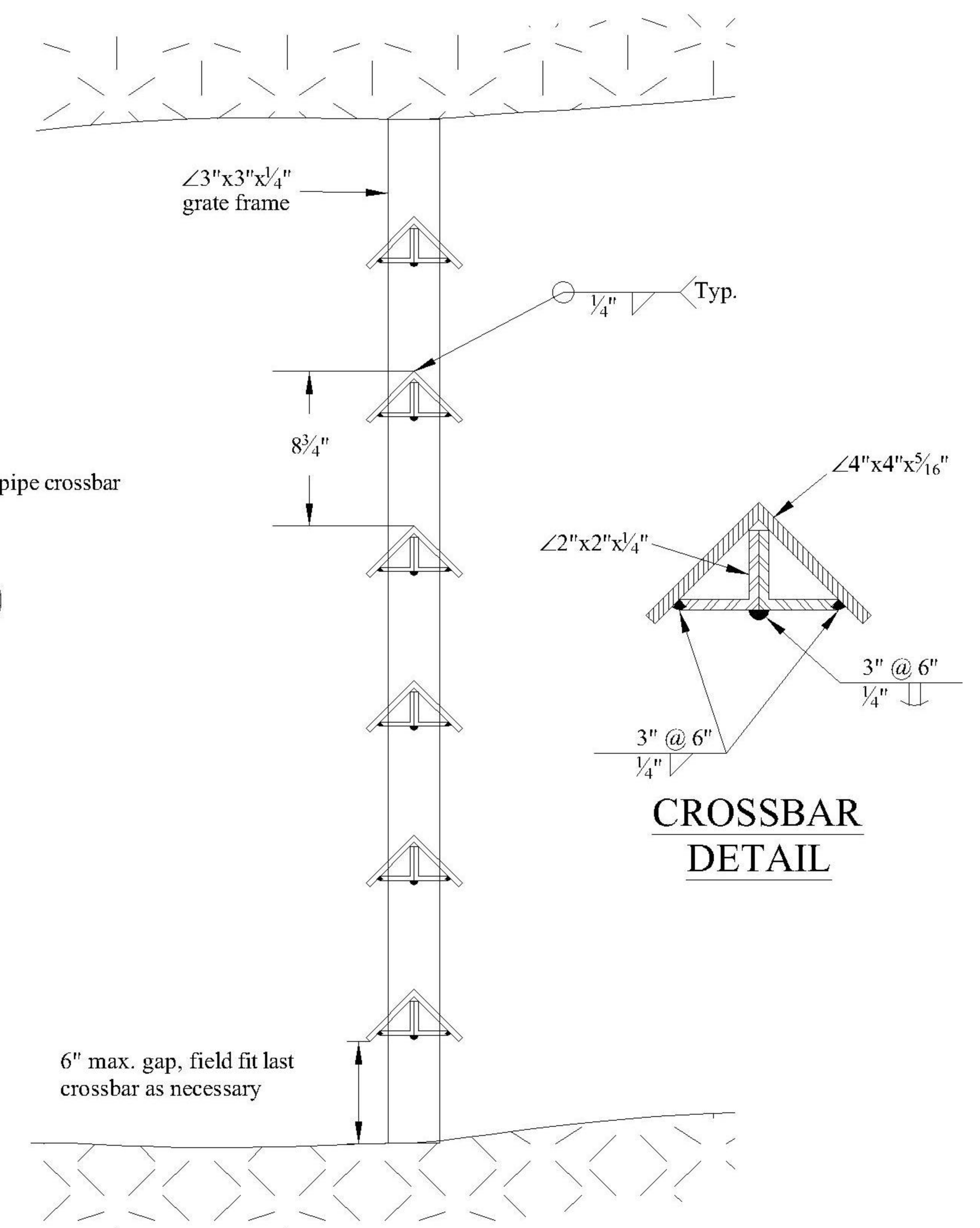
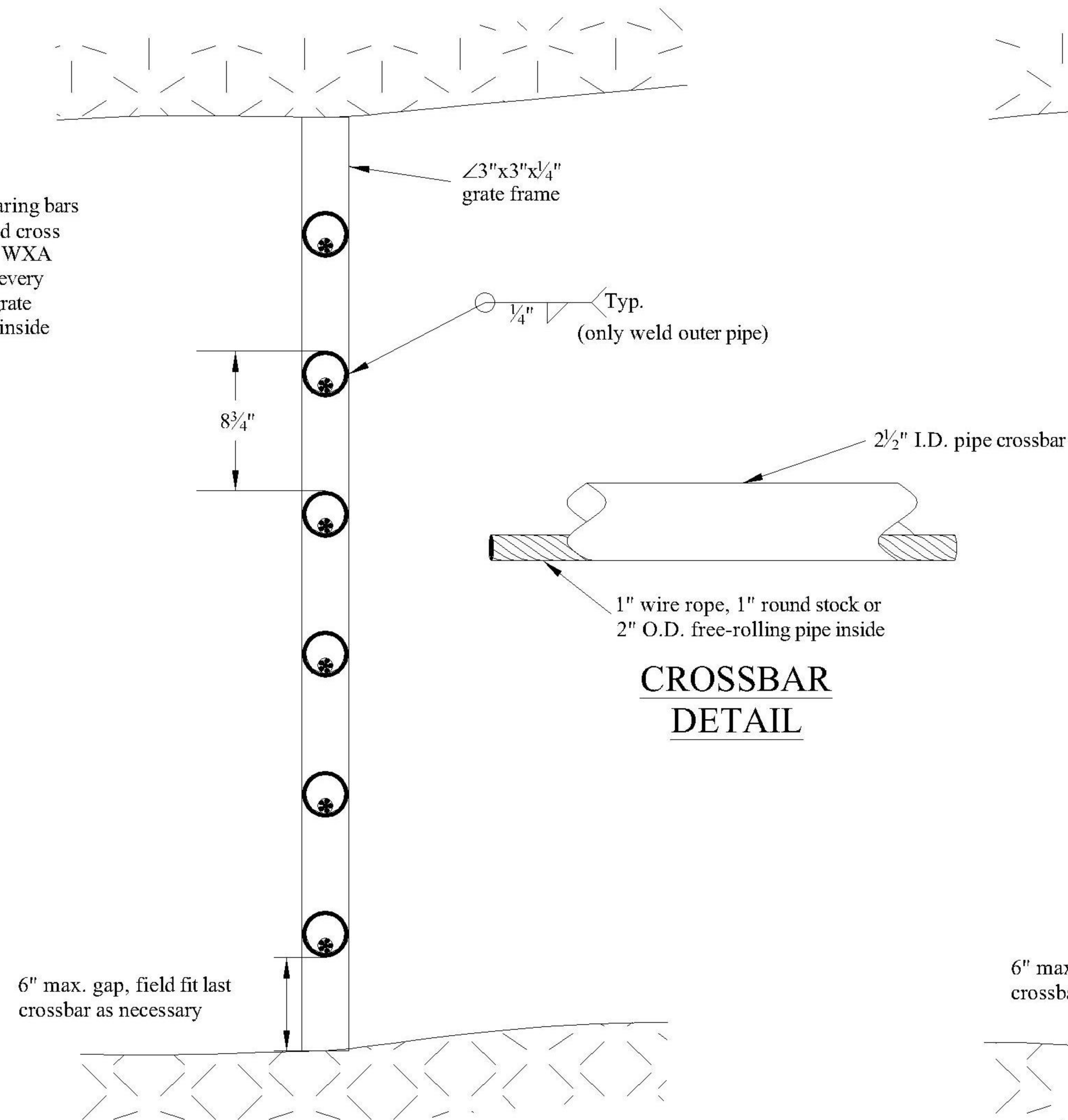
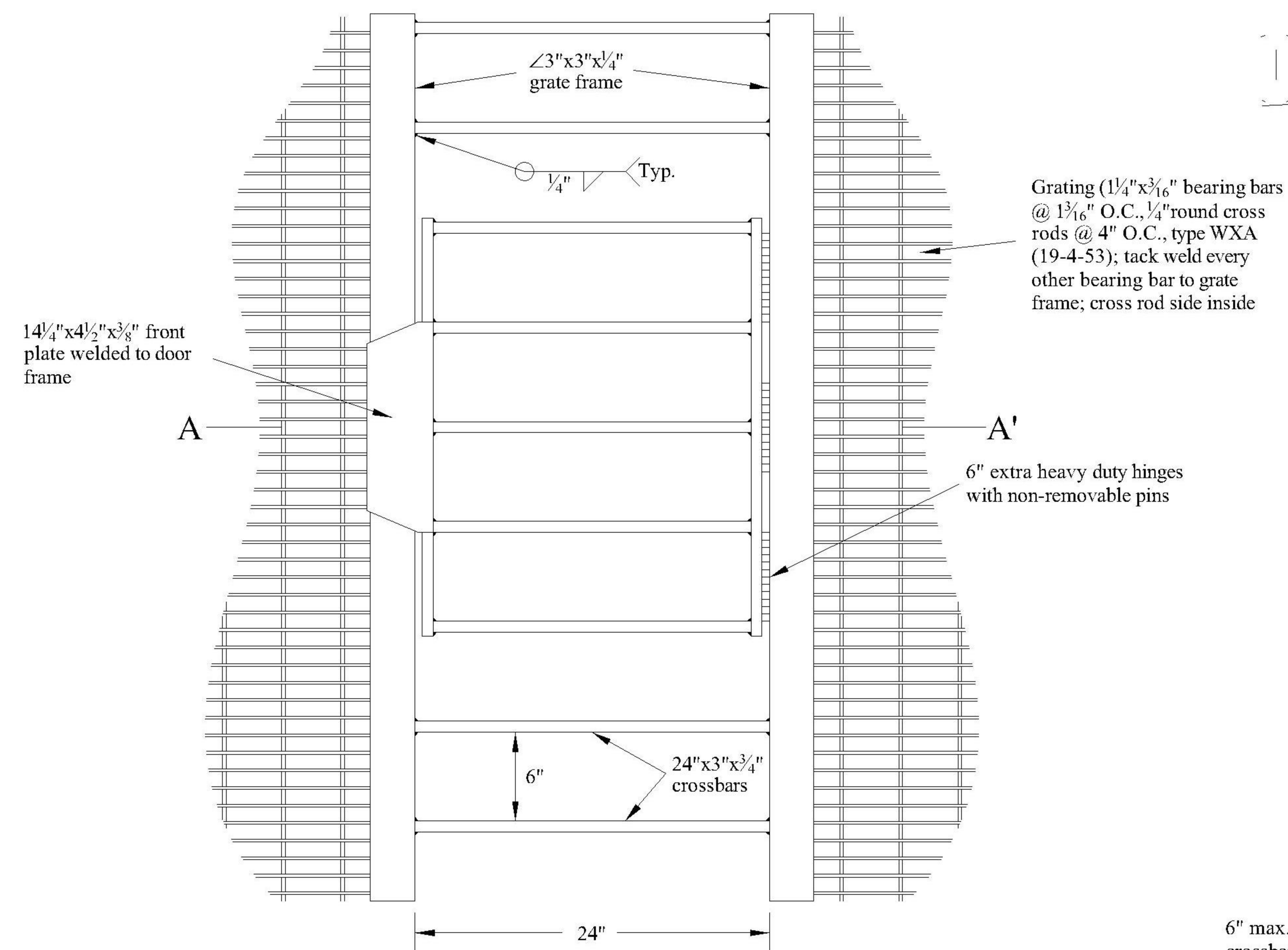
Sincerely,

SCOTT E. HAAS
District Ranger

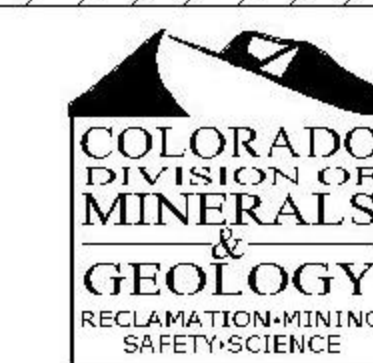
Enc: Bat Grate Specifications

cc: Peter Hays, Colorado DRMS





CAUTION: This project requires construction work around and over hazardous and unprotected mine shafts, stope, adits, and other openings which may be open to the surface or hidden from view by trash, debris or thin and unstable layers of surficial materials or rock. The contractor shall be responsible for thoroughly investigating the site conditions and scheduling his equipment, equipment operations, personnel and safety procedures to prevent accidents and injuries.



INACTIVE MINE RECLAMATION PROGRAM

STANDARD DRAWING No. 6

BAT GRATE ALTERNATIVES

Scale Varies	1/30/04	Sheet No. 2 of 2
Drawn by: JTG	Reviewed by: JTH & ALA	