




MINERALS PROGRAM INSPECTION REPORT
PHONE: (303) 866-3567

The Division of Reclamation, Mining and Safety conducted an inspection of the mining operation noted below. This report documents observations concerning compliance with the terms of the permit and applicable rules and regulations of the Mined Land Reclamation Board.

MINE NAME: Green/Croissant Property Sand and Gravel M	MINE/PROSPECTING ID#: M-2001-022	MINERAL: Sand and gravel	COUNTY: Weld
INSPECTION TYPE: Surety Release Inspection	INSPECTOR(S): Peter Hays	INSP. DATE: July 29, 2021	INSP. TIME: 10:00
OPERATOR: Loveland Ready-Mix Concrete, Inc.	OPERATOR REPRESENTATIVE: Stephanie Fancher-English	TYPE OF OPERATION: 112c - Construction Regular Operation	
REASON FOR INSPECTION: Surety Release Requested	BOND CALCULATION TYPE: None	BOND AMOUNT: \$209,700.00	
DATE OF COMPLAINT: NA	POST INSP. CONTACTS: None	JOINT INSP. AGENCY: None	
WEATHER: Clear	INSPECTOR'S SIGNATURE: 	SIGNATURE DATE: August 17, 2021	

GENERAL INSPECTION TOPICS

This list identifies the environmental and permit parameters inspected and gives a categorical evaluation of each. No problems or possible violations were noted during the inspection. The mine operation was found to be in full compliance with Mineral Rules and Regulations of the Colorado Mined Land Reclamation Board for the Extraction of Construction Materials and/or for Hard Rock, Metal and Designated Mining Operations. Any person engaged in any mining operation shall notify the office of any failure or imminent failure, as soon as reasonably practicable after such person has knowledge of such condition or of any impoundment, embankment, or slope that poses a reasonable potential for danger to any persons or property or to the environment; or any environmental protection facility designed to contain or control chemicals or waste which are acid or toxic-forming, as identified in the permit.

(AR) RECORDS----- <u>Y</u>	(FN) FINANCIAL WARRANTY----- <u>Y</u>	(RD) ROADS----- <u>N</u>
(HB) HYDROLOGIC BALANCE----- <u>Y</u>	(BG) BACKFILL & GRADING----- <u>Y</u>	(EX) EXPLOSIVES----- <u>N</u>
(PW) PROCESSING WASTE/TAILING---- <u>Y</u>	(SF) PROCESSING FACILITIES----- <u>N</u>	(TS) TOPSOIL----- <u>Y</u>
(MP) GENL MINE PLAN COMPLIANCE- <u>Y</u>	(FW) FISH & WILDLIFE----- <u>Y</u>	(RV) REVEGETATION---- <u>Y</u>
(SM) SIGNS AND MARKERS----- <u>Y</u>	(SP) STORM WATER MGT PLAN---- <u>N</u>	(RS) RECL PLAN/COMP-- <u>Y</u>
(ES) OVERBURDEN/DEV. WASTE----- <u>N</u>	(SC) EROSION/SEDIMENTATION--- <u>Y</u>	(ST) STIPULATIONS----- <u>N</u>
(AT) ACID OR TOXIC MATERIALS----- <u>N</u>	(OD) OFF-SITE DAMAGE----- <u>N</u>	

Y = Inspected / N = Not inspected / NA = Not applicable to this operation / PB = Problem cited / PV = Possible violation cited

OBSERVATIONS

The Green/Croissant Property Sand and Gravel Mine was inspected by Peter Hays with the Division of Reclamation, Mining and Safety (Division/DRMS) in response to an acreage reduction request (AR-03) submitted by the Operator on June 29, 2021. The Division is required by Rule 4.17.2 to inspect the site within sixty (60) days from the filed date to determine if the Permittee has complied with all applicable requirements of the Reclamation Plan. Mrs. Stephanie Fancher-English with Loveland Ready Mix was present during the inspection. A map indicating the acreage reduction area submitted with the release request is attached for reference.

The site is an 112c regular construction materials operation permitted for 92.90 acres. The site is divided into two (2) parcels, one owned by Loveland Ready-Mix Concrete, Inc. (LRM) - 48.0 acres and the leased property owned by the Christensen's - 44.9 acres. The Operator requested the acreage reduction for the entire 48.0 acres owned by LRM in AR-03. The Division approved a permit amendment to change the post-mining land use to industrial/commercial for the LRM owned portion of the site on January 3, 2017. The Operator submitted a copy of the approved USR Amendment with Weld County, 2MUSR17-01-1329, allowing the batch plant operation to remain following the release of the Reclamation Permit.

The LRM's property is divided into three (3) cells; Cells 1, 2 and 3. The Division currently holds a financial warranty in the amount of \$209,700.00, which appeared adequate to perform reclamation at the site based on the observations from this inspection. The Operator did not request a financial warranty reduction associated with the acreage reduction request. The mine identification sign and boundary markers were observed as required by Rule 3.1.12.

LRM Property – Cells 1, 2 and 3

Mining activities are complete in Cells 1, 2 and 3. Cell 1 is used as a source for water for the concrete batch plant and processing plant. The Cell 1 water surface is currently and will remain at approximately 3.02 acres. Cell 2 is divided into 3 sections. The western portion of Cell 2 is completely backfilled and is used for the recycled concrete operation and recycled concrete stockpile storage. The middle portion of Cell 2 is being backfilled with wash fines. The eastern portion of Cell 2 is used as a settling pond with a dewatering pump located in the northeastern corner of the pond. The middle the eastern portions of Cell 2 will continue to be backfilled with wash fines and concrete until a 2 acre pond is created in the eastern portion of Cell 2. The settled material in the remaining 2 acre pond will be removed as needed to maintain the capacity through the life of the concrete operation. Cell 3 is reclaimed as a 5.51 acre open-water wildlife pond. The Operator has supplied a copy of the final Water Court Decree, Case Number 2009CW105, for the evaporation depletions at the site.

The vegetation along the upland area and shorelines of Cells 1, 2 and 3 not being utilized for the concrete batch plant operation are well-established and consisted of grass varieties from the approved Reclamation Plan seed mixture including; western wheatgrass, blue grama and pubescent wheatgrass. Wetland vegetation species including willows, cattails and sedges have established along the shorelines. The vegetated reclaimed slopes were estimated at the required 3H:1V slope. The slopes were stable with no erosion features observed during the inspection. The upland vegetation areas in Cells 2 and 3 had been recently mowed by the Operator. Noxious and annual weeds including Canada thistle and kochia were observed during the inspection. The weeds were sparse and typically individual plants. The Operator stated active weed control spraying is conducted at the site. The Operator intends to participate in the Weld County weed control cost

sharing program, which will continue the management of noxious and annual weeds at the site after the LRM property is released from the permit boundary.

On July 6, 2021, the Division received an email from Jamie Christensen objecting to AR-03 for the following reasons:

1. Noxious weeds on several cells of mine site. The weeds are spreading and are being allowed to get to over 4 feet tall and blossom and spread.
2. The bond will no longer cover issued that have not been resolved the cost of fixing the slope with grading etc.

Division response:

1. The Division did observe a few noxious and annual weed during the release inspection. However, the weeds were well controlled and the reclamation vegetation was out-competing the weeds. The Division did not observed weeds of 4 feet in height during the inspection.
2. The Operator did not request an associated financial warranty release request. The Division currently holds a financial warranty in the amount of \$209,700.00, which is adequate to complete reclamation in the remaining mining cell (Cell 4) if AR-03 is approved by the Division.

The Division will approve the acreage reduction request for the 48.0 acres owned by LRM based on the observations from this inspection.

Photographs taken during the inspection are attached. If you need additional information or have any questions, please contact me at Division of Reclamation, Mining and Safety, 1313 Sherman Street, Room 215, Denver, CO 80203, by telephone at 303.866.3567 x 8124, or by email at peter.hays@state.co.us.

Inspection Contact Address

Stephanie Fancher-English
Loveland Ready-Mix Concrete, Inc.
P.O. Box 299
Loveland, CO 80539

Enclosure: Acreage Reduction Map

Ec: Jared Ebert, DRMS

PHOTOGRAPHS



Green Croissant mine sign



View of Cell 1 from the southeast corner looking northwest



View of the vegetation along the eastern shore of Cell 1



View of the concrete recycling operation in the western portion of Cell 2



View of the wash fines in the north half of the middle portion of Cell 2



View of the northern shoreline of the western portion of Cell 2 looking west



View of the eastern shoreline of the western portion of Cell 2 looking north



View of the southern shoreline of Cell 3 looking east



View of the eastern shoreline of Cell 3 looking north



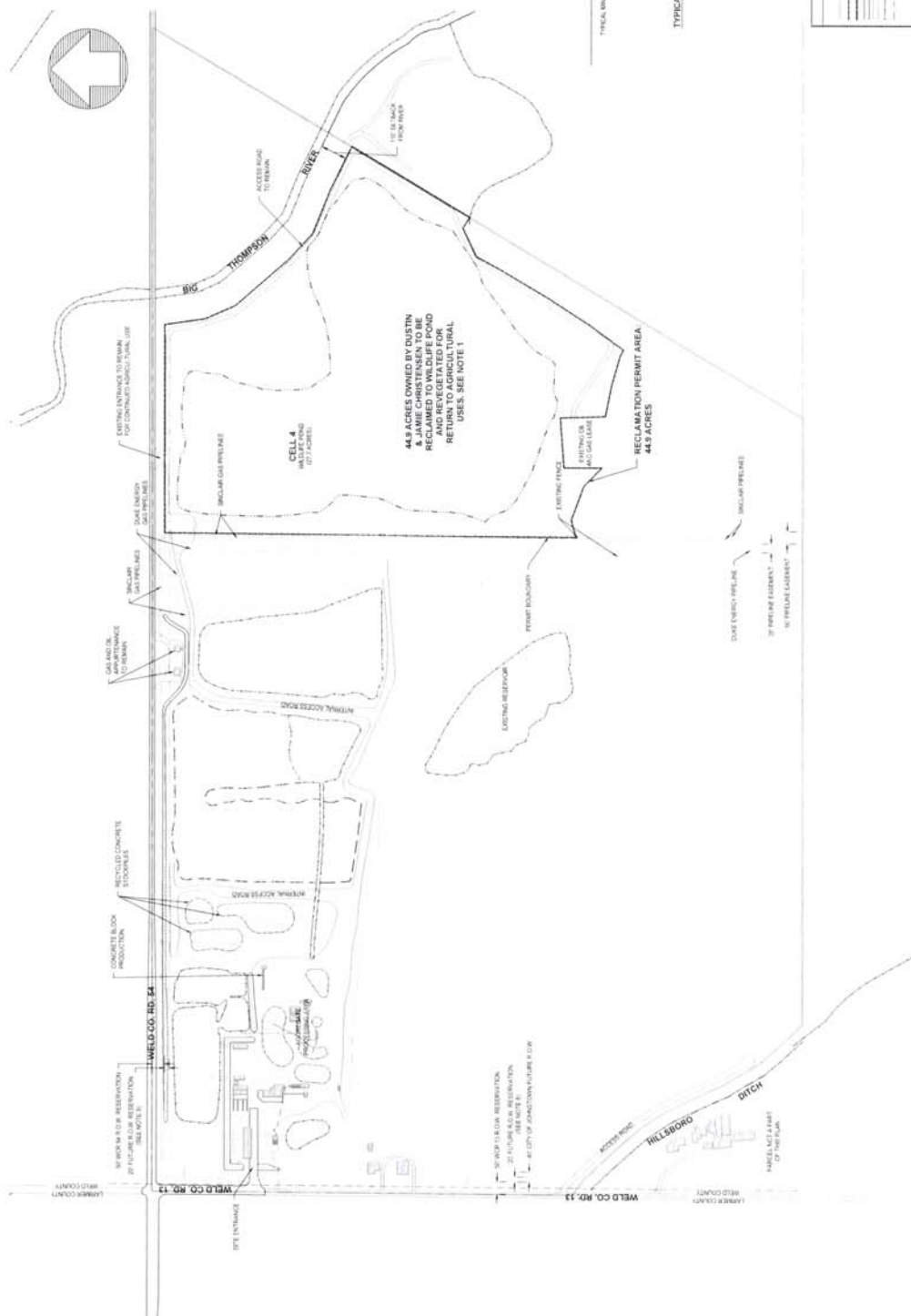
View of the northern shoreline of Cell 3 looking west



View of the western shoreline of Cell 3 looking south

NOTES:

1. DISTURBED AREAS INSIDE REGULATION-RENT BOUNDARY NOT BEING RECLAIMED FOR FUTURE TREATMENT OF WASTE WILL BE RECLAIMED FOR FUTURE TREATMENT OF WASTE. THIS WILL BE HANDLED AND RESTORED, SEE 117 PERMIT (4.007) FOR DETAILED LIST OF SPECIES.
2. 1.1.1. CONSIDERATION OF THE EFFECTS OF COEXISTING COALBED COGNOMERALS AT CONTROL INTERVALS AND INTERPOLATED TO 2 CONTIGUES.
3. A COALBED BOUNDARY IS SHOWN AND APPROVED BY WELLS DEPARTMENT, 17 JANUARY 2001.
4. DEVELOPMENT TEMP. 17 JANUARY 2001.
5. ALL REMAINING PRINCIPAL WELLS TO BE CLOSING 15/01/01 AND RE-OPENED WITH NEW WATER GEARING.
6. FUTURE USE AS RESERVATION TO WELLS CONTROL IN PARKS (SEE 117 PERMIT CONCERNING SAMPLING).
7. ALL WELLS FOR FURTHER CONCRETE PRODUCTION.
8. ALL WELLS FOR FURTHER CONCRETE PRODUCTION.
9. ALL WELLS FOR FURTHER CONCRETE PRODUCTION.
10. ALL WELLS FOR FURTHER CONCRETE PRODUCTION.
11. ALL WELLS FOR FURTHER CONCRETE PRODUCTION.
12. ALL WELLS FOR FURTHER CONCRETE PRODUCTION.
13. ALL WELLS FOR FURTHER CONCRETE PRODUCTION.
14. ALL WELLS FOR FURTHER CONCRETE PRODUCTION.
15. ALL WELLS FOR FURTHER CONCRETE PRODUCTION.
16. ALL WELLS FOR FURTHER CONCRETE PRODUCTION.
17. ALL WELLS FOR FURTHER CONCRETE PRODUCTION.
18. ALL WELLS FOR FURTHER CONCRETE PRODUCTION.
19. ALL WELLS FOR FURTHER CONCRETE PRODUCTION.
20. ALL WELLS FOR FURTHER CONCRETE PRODUCTION.
21. ALL WELLS FOR FURTHER CONCRETE PRODUCTION.
22. ALL WELLS FOR FURTHER CONCRETE PRODUCTION.
23. ALL WELLS FOR FURTHER CONCRETE PRODUCTION.
24. ALL WELLS FOR FURTHER CONCRETE PRODUCTION.
25. ALL WELLS FOR FURTHER CONCRETE PRODUCTION.
26. ALL WELLS FOR FURTHER CONCRETE PRODUCTION.
27. ALL WELLS FOR FURTHER CONCRETE PRODUCTION.
28. ALL WELLS FOR FURTHER CONCRETE PRODUCTION.
29. ALL WELLS FOR FURTHER CONCRETE PRODUCTION.
30. ALL WELLS FOR FURTHER CONCRETE PRODUCTION.
31. ALL WELLS FOR FURTHER CONCRETE PRODUCTION.
32. ALL WELLS FOR FURTHER CONCRETE PRODUCTION.
33. ALL WELLS FOR FURTHER CONCRETE PRODUCTION.
34. ALL WELLS FOR FURTHER CONCRETE PRODUCTION.
35. ALL WELLS FOR FURTHER CONCRETE PRODUCTION.
36. ALL WELLS FOR FURTHER CONCRETE PRODUCTION.
37. ALL WELLS FOR FURTHER CONCRETE PRODUCTION.
38. ALL WELLS FOR FURTHER CONCRETE PRODUCTION.
39. ALL WELLS FOR FURTHER CONCRETE PRODUCTION.
40. ALL WELLS FOR FURTHER CONCRETE PRODUCTION.
41. ALL WELLS FOR FURTHER CONCRETE PRODUCTION.
42. ALL WELLS FOR FURTHER CONCRETE PRODUCTION.
43. ALL WELLS FOR FURTHER CONCRETE PRODUCTION.
44. ALL WELLS FOR FURTHER CONCRETE PRODUCTION.
45. ALL WELLS FOR FURTHER CONCRETE PRODUCTION.
46. ALL WELLS FOR FURTHER CONCRETE PRODUCTION.
47. ALL WELLS FOR FURTHER CONCRETE PRODUCTION.
48. ALL WELLS FOR FURTHER CONCRETE PRODUCTION.
49. ALL WELLS FOR FURTHER CONCRETE PRODUCTION.
50. ALL WELLS FOR FURTHER CONCRETE PRODUCTION.
51. ALL WELLS FOR FURTHER CONCRETE PRODUCTION.
52. ALL WELLS FOR FURTHER CONCRETE PRODUCTION.
53. ALL WELLS FOR FURTHER CONCRETE PRODUCTION.
54. ALL WELLS FOR FURTHER CONCRETE PRODUCTION.
55. ALL WELLS FOR FURTHER CONCRETE PRODUCTION.
56. ALL WELLS FOR FURTHER CONCRETE PRODUCTION.
57. ALL WELLS FOR FURTHER CONCRETE PRODUCTION.
58. ALL WELLS FOR FURTHER CONCRETE PRODUCTION.
59. ALL WELLS FOR FURTHER CONCRETE PRODUCTION.
60. ALL WELLS FOR FURTHER CONCRETE PRODUCTION.
61. ALL WELLS FOR FURTHER CONCRETE PRODUCTION.
62. ALL WELLS FOR FURTHER CONCRETE PRODUCTION.
63. ALL WELLS FOR FURTHER CONCRETE PRODUCTION.
64. ALL WELLS FOR FURTHER CONCRETE PRODUCTION.
65. ALL WELLS FOR FURTHER CONCRETE PRODUCTION.
66. ALL WELLS FOR FURTHER CONCRETE PRODUCTION.
67. ALL WELLS FOR FURTHER CONCRETE PRODUCTION.
68. ALL WELLS FOR FURTHER CONCRETE PRODUCTION.
69. ALL WELLS FOR FURTHER CONCRETE PRODUCTION.
70. ALL WELLS FOR FURTHER CONCRETE PRODUCTION.
71. ALL WELLS FOR FURTHER CONCRETE PRODUCTION.
72. ALL WELLS FOR FURTHER CONCRETE PRODUCTION.
73. ALL WELLS FOR FURTHER CONCRETE PRODUCTION.
74. ALL WELLS FOR FURTHER CONCRETE PRODUCTION.
75. ALL WELLS FOR FURTHER CONCRETE PRODUCTION.
76. ALL WELLS FOR FURTHER CONCRETE PRODUCTION.
77. ALL WELLS FOR FURTHER CONCRETE PRODUCTION.
78. ALL WELLS FOR FURTHER CONCRETE PRODUCTION.
79. ALL WELLS FOR FURTHER CONCRETE PRODUCTION.
80. ALL WELLS FOR FURTHER CONCRETE PRODUCTION.
81. ALL WELLS FOR FURTHER CONCRETE PRODUCTION.
82. ALL WELLS FOR FURTHER CONCRETE PRODUCTION.
83. ALL WELLS FOR FURTHER CONCRETE PRODUCTION.
84. ALL WELLS FOR FURTHER CONCRETE PRODUCTION.
85. ALL WELLS FOR FURTHER CONCRETE PRODUCTION.
86. ALL WELLS FOR FURTHER CONCRETE PRODUCTION.
87. ALL WELLS FOR FURTHER CONCRETE PRODUCTION.
88. ALL WELLS FOR FURTHER CONCRETE PRODUCTION.
89. ALL WELLS FOR FURTHER CONCRETE PRODUCTION.
90. ALL WELLS FOR FURTHER CONCRETE PRODUCTION.
91. ALL WELLS FOR FURTHER CONCRETE PRODUCTION.
92. ALL WELLS FOR FURTHER CONCRETE PRODUCTION.
93. ALL WELLS FOR FURTHER CONCRETE PRODUCTION.
94. ALL WELLS FOR FURTHER CONCRETE PRODUCTION.
95. ALL WELLS FOR FURTHER CONCRETE PRODUCTION.
96. ALL WELLS FOR FURTHER CONCRETE PRODUCTION.
97. ALL WELLS FOR FURTHER CONCRETE PRODUCTION.
98. ALL WELLS FOR FURTHER CONCRETE PRODUCTION.
99. ALL WELLS FOR FURTHER CONCRETE PRODUCTION.
100. ALL WELLS FOR FURTHER CONCRETE PRODUCTION.



TYPICAL RECLAMATION CROSS SECTION CELL 4



GRAPHIC SCALE
0 50 100 200
feet
1 inch = 200 ft.

LEGEND

[illegible]