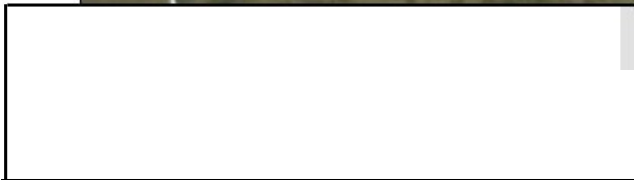
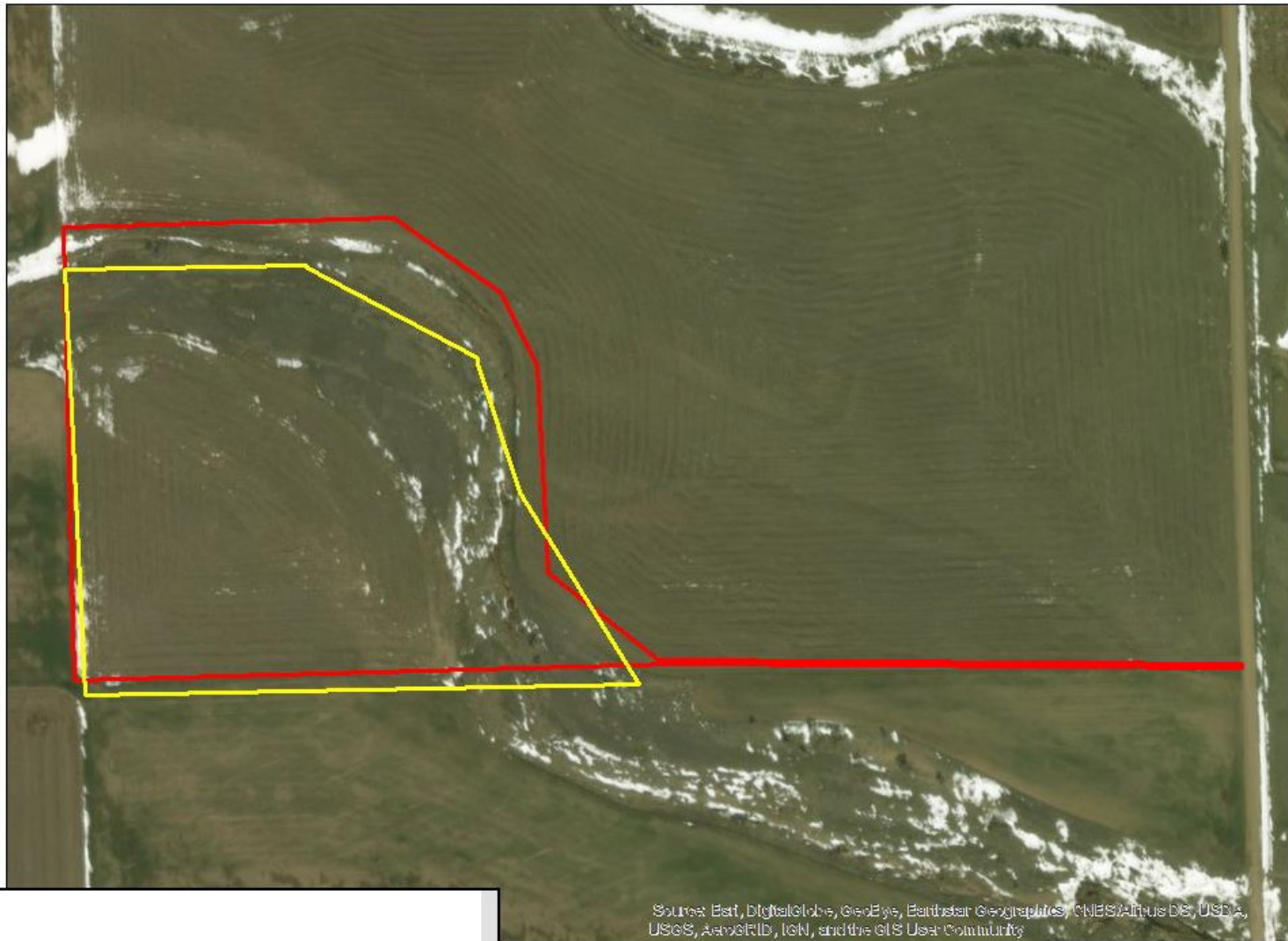


Thru 07/10/2021 4.3 acres mined 2.0 acres on the West end to be mined.



**M. Larson Pit #1, Application No. M-2018-006**  
Pre-Operation Inspection, 18 April 2018

**Legend**

18April2018\_Marked Boundary

**D** ML ar sonPit \_Perm itBoundar y\_ORM S\_E stim ate

