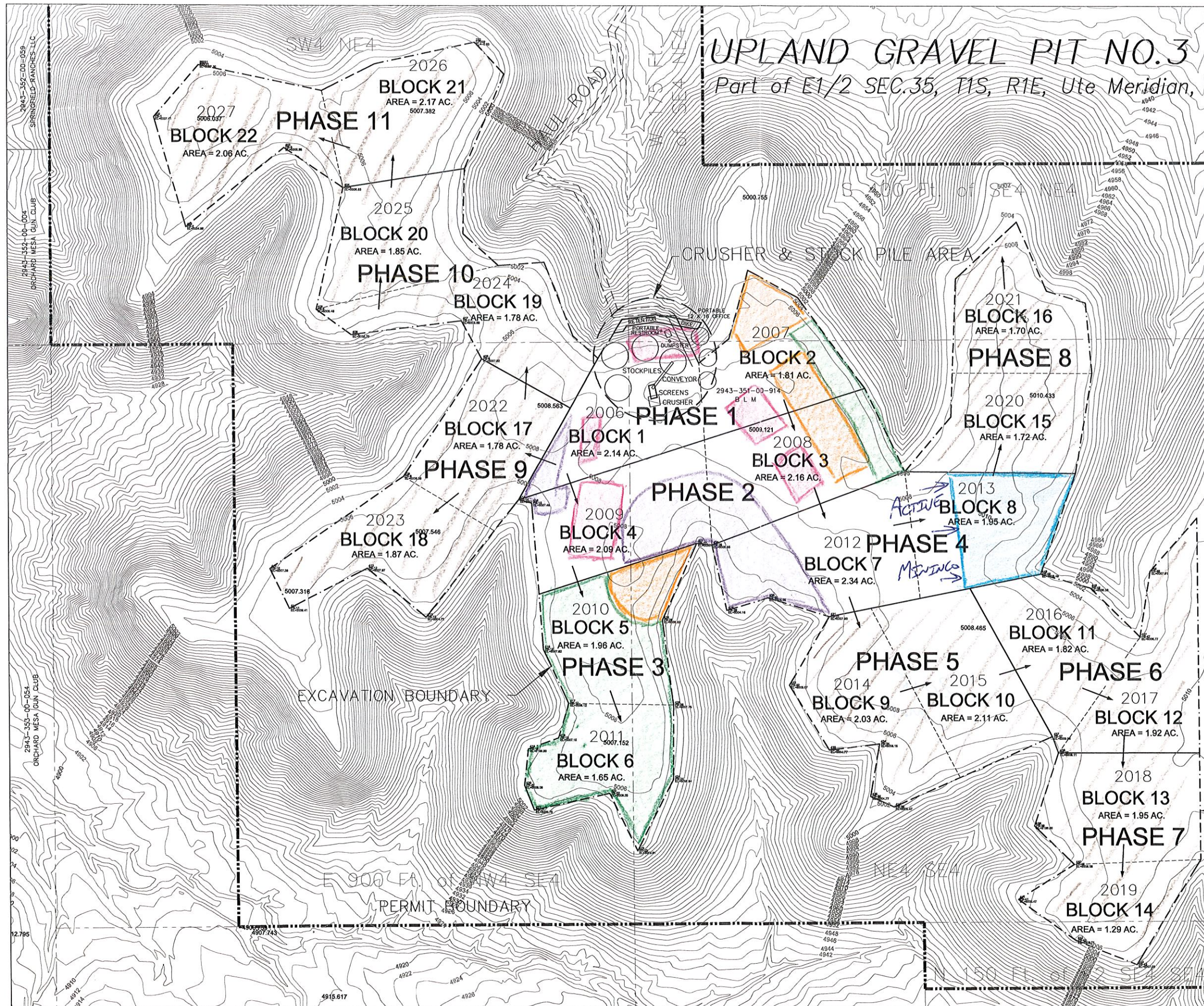


# UPLAND GRAVEL PIT NO.3 – BLM SITE

Part of E1/2 SEC.35, T1S, R1E, Ute Meridian, Mesa County, Colorado



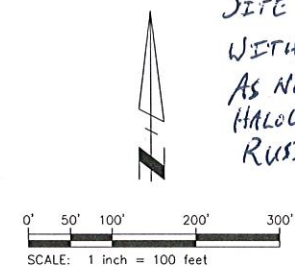
- LEGEND**
- SECTION DIVISION LINE
  - PERMIT BOUNDARY
  - EXCAVATION LIMITS
  - MINING DIRECTION
  - HAUL ROAD

**PRESENT VEGETATION COVER**  
RANGE GRASSES – SALT BRUSH – CACTUS

**AFFECTED AREA SOILS**  
EXTRACTION SITE  
MESA – STONY SUBSTRATUM SERIES CONSISTS OF VERY DEEP SOILS ON TERRACES AND MESA SUMMITS FORMED IN ALLUVIUM.  
HAUL ROAD  
BADLANDS – IS MODERATELY STEEP TO VERY STEEP BARREN LAND DISSECTED BY MANY INTERMITTENT DRAINAGE CHANNELS.

**UNDISTURBED**

SITE IS TREATED WITH AMINE 2-4D AS NEEDED TO CONTROL HALOGETON AND RUSSIAN THISTLE



- RECLAIMED
- RESERVED TOPSOIL
- RESERVED OVERBURDEN
- STOCKPILES
- STRIPPED

## EXHIBIT C MINING PLAN

APPROX. CU. YD. = 1,325,000  
PHASES = 40 - 60 K TONS / YEAR  
UPLAND GRAVEL, INC.

PIT NO.3 – BLM SITE  
E1/2 Sec.35, T1S, R1E, UTE M.

DATE: November 30, 2005 SCALE: 1"=100'

**MAP Surveys, Inc.**  
MAPPING – PLANNING – SURVEYING  
P.O. BOX 290, MESA, COLORADO 81643  
(970)268-5851 FAX (970)268-5256