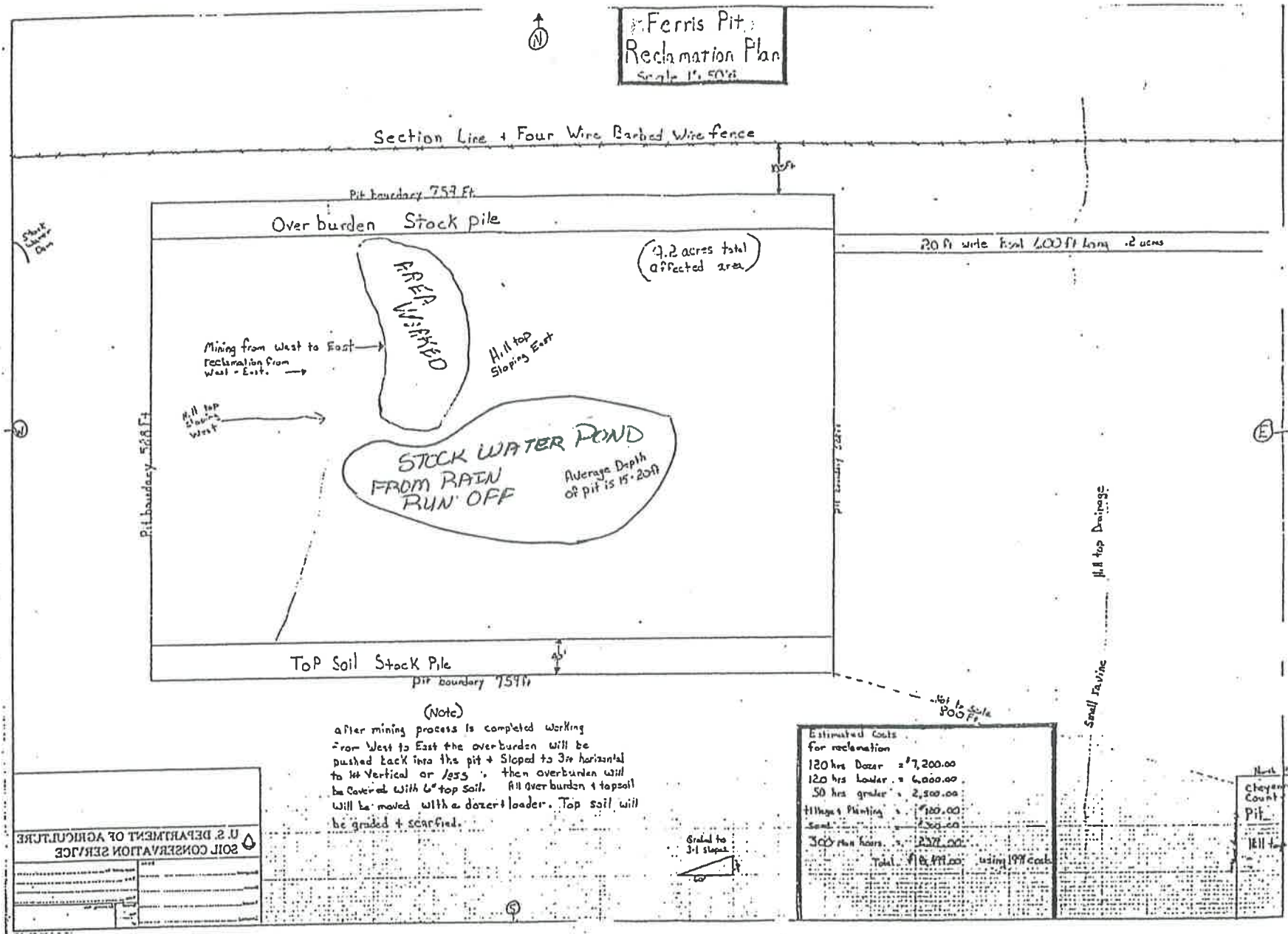


FERRIS

Ferris Pit:
Reclamation Plan
Scale 1" = 50'



(Note)
after mining process is completed working from West to East the overburden will be pushed back into the pit + Sloped to 3:1 horizontal to 1:1 Vertical or less, then overburden will be Covered with 6" top soil. All overburden + topsoil will be moved with a dozer + loader. Top soil will be graded + scarified.

Estimated Costs for reclamation

120 hrs Dozer	= \$7,200.00
120 hrs Loader	= 6,000.00
50 hrs grader	= 2,500.00
Hillside Planting	= 100.00
Seed	= 200.00
300 hrs hours	= 2,200.00
Total	\$18,100.00 using 1977 costs

U.S. DEPARTMENT OF AGRICULTURE
SOIL CONSERVATION SERVICE

Project No.	
County	
State	
Section	
Township	
Range	
Latitude	
Longitude	
Scale	
Date	
Prepared by	
Checked by	
Approved by	

Mont
Cheyenne
County
Pit
1811