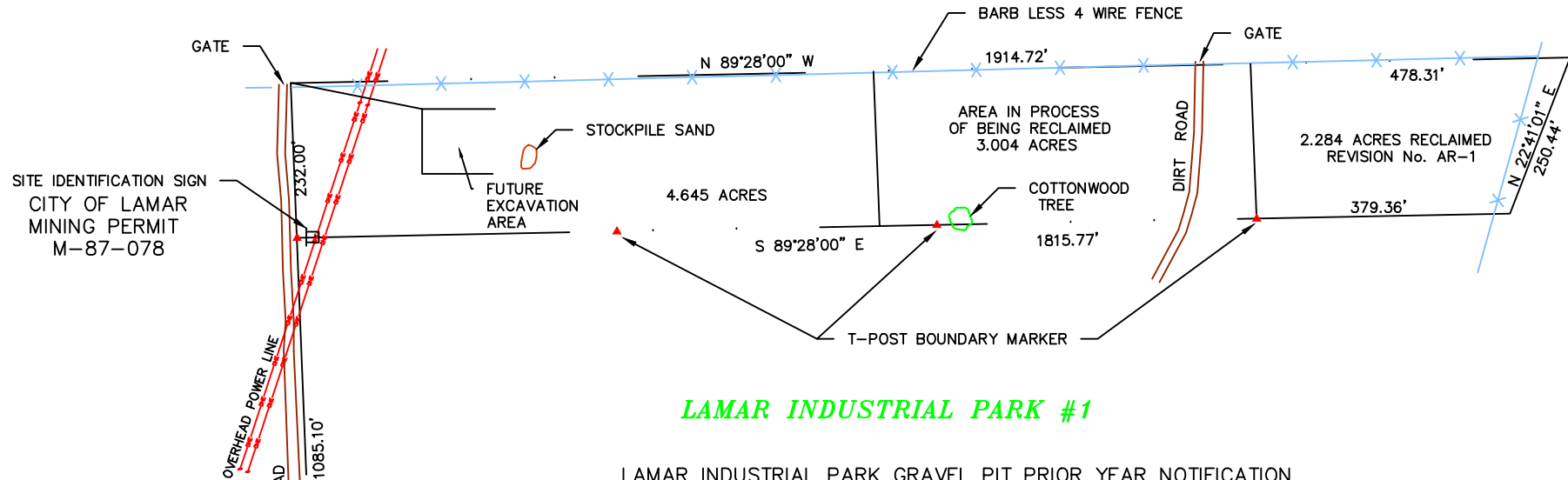


NORTH GATEWAY PARK



LAMAR INDUSTRIAL PARK #1

LAMAR INDUSTRIAL PARK GRAVEL PIT PRIOR YEAR NOTIFICATION

Disturbances to existing land are shown on this map for the year 2020 – 2021.

Reclamation on the East 2.284 Acres accomplished to date at the site. Released from reclamation responsibility, May 2001. Land in the process of being reclaimed is designated on the map. This area will not be utilized for future mining operations.

Active operations began November 1st, 2012. Date of last excavation, processing or hauling activity occurred March 2021. New disturbances for the upcoming year to be approx. 0.5 Ac. on the west end of the pit.

Approximate 250 tons of material were utilized from excavated and stockpiled material in the active operations referenced mining months.

Project: **LIP GRAVEL PIT
PERMIT #M1987-078**

Date: 6-15-2021

Sheet # 1

Drawn By: msm

Scale: 1" = 250'