




**MINERALS PROGRAM INSPECTION REPORT**  
**PHONE: (303) 866-3567**

The Division of Reclamation, Mining and Safety has conducted an inspection of the mining operation noted below. This report documents observations concerning compliance with the terms of the permit and applicable rules and regulations of the Mined Land Reclamation Board.

<b>MINE NAME:</b> Climax Mine	<b>MINE/PROSPECTING ID#:</b> M-1977-493	<b>MINERAL:</b> Molybdenum	<b>COUNTY:</b> Lake, Summit
<b>INSPECTION TYPE:</b> Monitoring	<b>INSPECTOR(S):</b> Dustin Czaplá	<b>INSP. DATE:</b> May 20, 2021	<b>INSP. TIME:</b> 13:00
<b>OPERATOR:</b> Climax Molybdenum Company	<b>OPERATOR REPRESENTATIVE:</b> Diana Kelts	<b>TYPE OF OPERATION:</b> 112d-3 - Designated Mining Operation	
<b>REASON FOR INSPECTION:</b> Normal I&E Program	<b>BOND CALCULATION TYPE:</b> None	<b>BOND AMOUNT:</b> \$91,011,850.00	
<b>DATE OF COMPLAINT:</b> NA	<b>POST INSP. CONTACTS:</b> None	<b>JOINT INSP. AGENCY:</b> None	
<b>WEATHER:</b> Clear	<b>INSPECTOR'S SIGNATURE:</b> 	<b>SIGNATURE DATE:</b> June 1, 2021	

**GENERAL INSPECTION TOPICS**

This list identifies the environmental and permit parameters inspected and gives a categorical evaluation of each. No problems or possible violations were noted during the inspection. The mine operation was found to be in full compliance with Mineral Rules and Regulations of the Colorado Mined Land Reclamation Board for the Extraction of Construction Materials and/or for Hard Rock, Metal and Designated Mining Operations. Any person engaged in any mining operation shall notify the office of any failure or imminent failure, as soon as reasonably practicable after such person has knowledge of such condition or of any impoundment, embankment, or slope that poses a reasonable potential for danger to any persons or property or to the environment; or any environmental protection facility designed to contain or control chemicals or waste which are acid or toxic-forming, as identified in the permit.

(AR) RECORDS----- <u>Y</u>	(FN) FINANCIAL WARRANTY----- <u>N</u>	(RD) ROADS----- <u>Y</u>
(HB) HYDROLOGIC BALANCE----- <u>Y</u>	(BG) BACKFILL & GRADING----- <u>N</u>	(EX) EXPLOSIVES----- <u>N</u>
(PW) PROCESSING WASTE/TAILING---- <u>N</u>	(SF) PROCESSING FACILITIES----- <u>N</u>	(TS) TOPSOIL----- <u>N</u>
(MP) GENL MINE PLAN COMPLIANCE- <u>Y</u>	(FW) FISH & WILDLIFE----- <u>N</u>	(RV) REVEGETATION---- <u>N</u>
(SM) SIGNS AND MARKERS----- <u>N</u>	(SP) STORM WATER MGT PLAN---- <u>N</u>	(RS) RECL PLAN/COMP-- <u>N</u>
(ES) OVERBURDEN/DEV. WASTE----- <u>N</u>	(SC) EROSION/SEDIMENTATION--- <u>N</u>	(ST) STIPULATIONS----- <u>N</u>
(AT) ACID OR TOXIC MATERIALS----- <u>Y</u>	(OD) OFF-SITE DAMAGE----- <u>N</u>	

Y = Inspected / N = Not inspected / NA = Not applicable to this operation / PB = Problem cited / PV = Possible violation cited

## **OBSERVATIONS**

This inspection was conducted as part of the Division of Reclamation, Mining and Safety's (Division) normal monitoring program. Climax representatives, Diana Kelts and Alex Ungers, guided DRMS during the inspection.

The inspection was focused on the following areas:

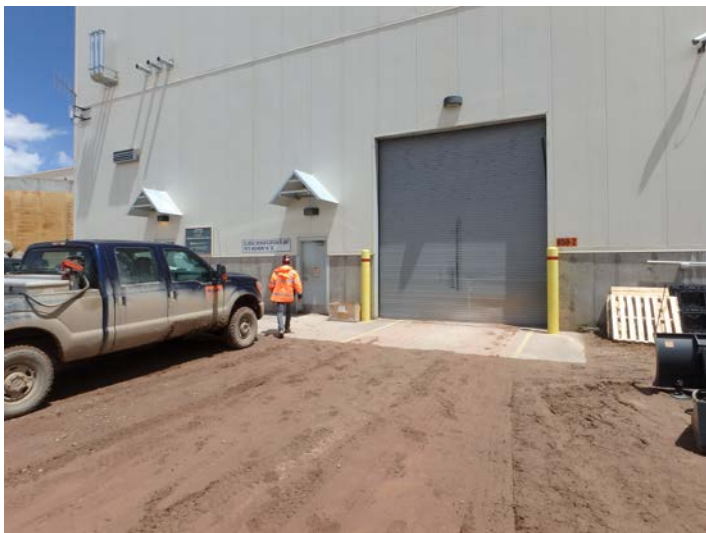
- Sludge Densification Plant (SDP)
- Property Discharge Water Treatment Plant (PDWTP)
- PDWTP influent pipeline leak

### **Sludge Densification Plant (SDP)**

The SDP is located on the east side of Tenmile Pond. The SDP provides first stage metals treatment for a significant portion of the mines affected waters and creates sludge for deposition in tailings storage facilities. When possible, water is recycled through Robinson Lake for use in the mill facility. The plant has been constructed with adequate secondary containment, in the form of concrete sumps, to contain spills that could occur within the plant. Spills were not noted during this inspection. Operation of the SDP is automated and emergency generators are in place in case of power outages. Reagents utilized in the SDP include lime and flocculant. All chemicals and reagents observed in the SDP area were properly stored with adequate secondary containment protections. Containers were clearly labeled.

The SDP Lime Station is located approximately 800 feet south of the SDP. The lime station includes conventional silos for storage of lime and lime slakers. Slaked lime is produced by mixing lime from the silos with fresh water. No problems were noted in the lime station.

The SDP facility appeared to be well maintained and functioning as designed. No problems were noted.



SDP



SDP





SDP



SDP



SDP



SDP



Lime Station



Lime Station





Lime Station



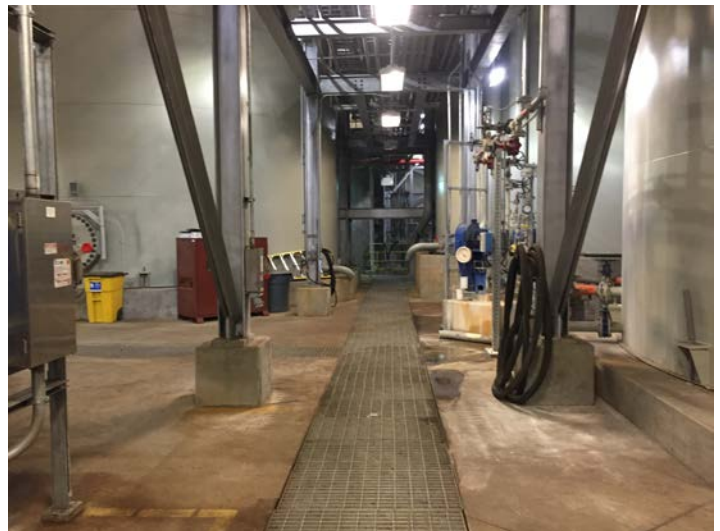
Lime Station

### Property Discharge Water Treatment Plant (PDWTP)

The PDWTP is located below 5 Dam and is intended to remove second stage metals, such as manganese, iron, copper and zinc, prior to discharging excess water into Tenmile Creek. It provides final treatment before affected water leaves the property. The plant has been constructed with adequate secondary containment, in the form of concrete sumps, to contain spills that could occur within the plant. Spills were not noted within the PDWTP during this inspection. Operation of the PDWTP is automated, but also manned around the clock. Emergency generators are in place in case of power outages. Reagents utilized in the PDWTP include lime, flocculant and sulfuric acid. All chemicals and reagents observed in the PDWTP area were properly stored with adequate secondary containment protections. Containers were clearly labeled. The sulfuric acid is stored in an isolated room in a phenolic lined carbon steel tank, located within an epoxy coated concrete containment area, which is isolated from the rest of the plants containment area. The sulfuric acid truck unloading area has adequate secondary containment in the form of a concrete sump. The PDWTP facility appeared to be well maintained and functioning as designed. No problems were noted with the PDWTP.



PDWTP



PDWTP



PDWTP



PDWTP



PDWTP



PDWTP



### PDWTP Influent Pipeline Leak

On April 27, 2021 Climax notified the Division of a small leak discovered in one of the PDWTP influent pipes. The incident occurred on April 27, 2021. The leak resulted from a crack in the pipe at a welded joint. The leak location was observed during this inspection. The pipe at the leak location was exposed. The pipe had been patched and banded. No leakage was observed during this inspection.



No problems or violations were noted during this inspection.

Responses to this inspection report should be directed to Dustin Czapla at the Division of Reclamation, Mining and Safety, 1313 Sherman Street Room 215, Denver, Colorado, 80203, phone number (303) 866-3567, ext. 8188, or [dustin.czapla@state.co.us](mailto:dustin.czapla@state.co.us).

### Inspection Contact Address

Diana Kelts  
Climax Molybdenum Company  
Highway 91, Fremont Pass  
Climax, CO 80429