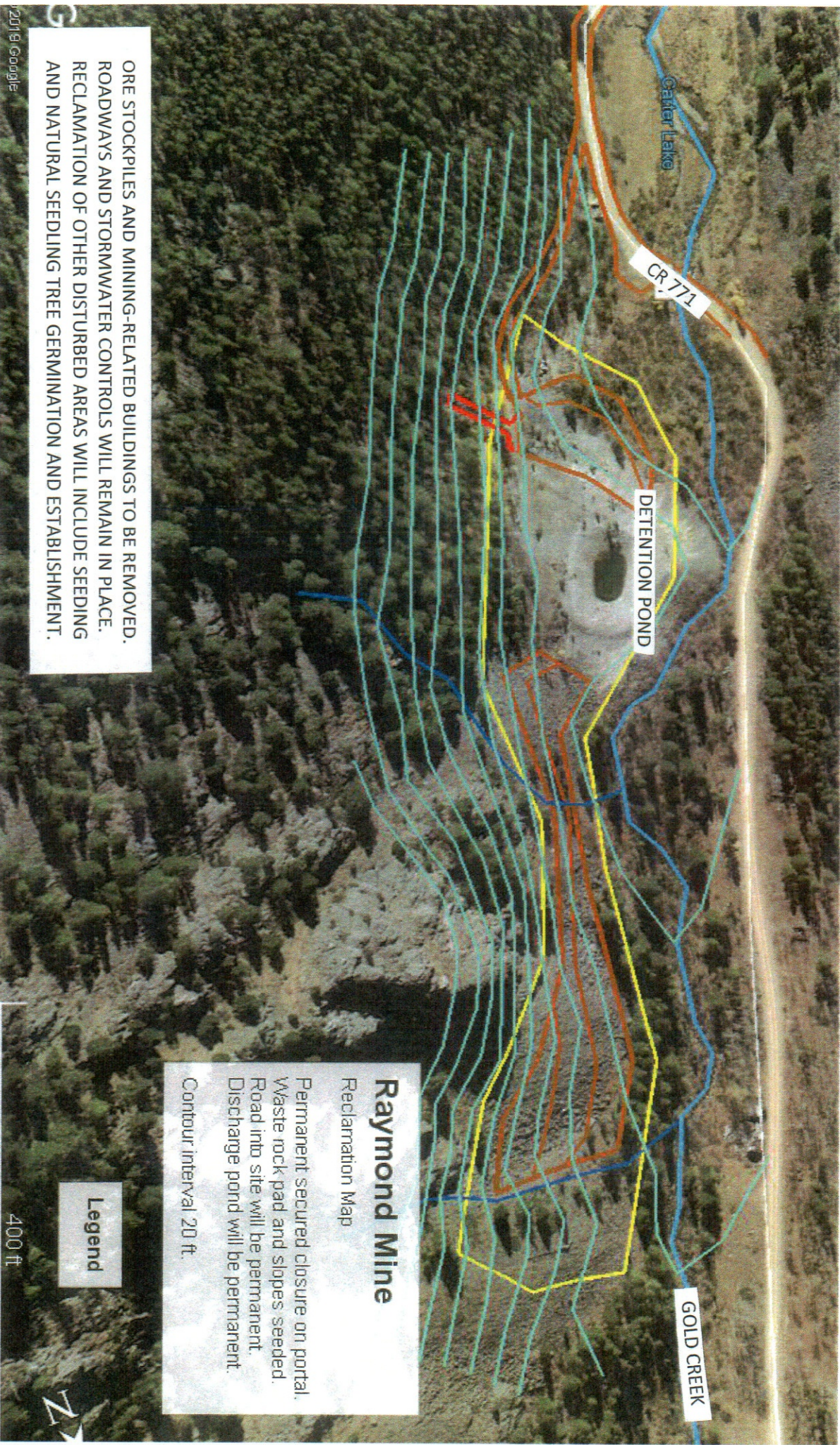


M-1020-013

2020 map

Sporkill
Jake Wilkinson
5-6-2021



ORE STOCKPILES AND MINING-RELATED BUILDINGS TO BE REMOVED. ROADWAYS AND STORMWATER CONTROLS WILL REMAIN IN PLACE. RECLAMATION OF OTHER DISTURBED AREAS WILL INCLUDE SEEDING AND NATURAL SEEDLING TREE GERMINATION AND ESTABLISHMENT.

Raymond Mine
Reclamation Map
Permanent secured closure on portal.
Waste rock pad and slopes seeded.
Road into site will be permanent.
Discharge pond will be permanent.
Contour interval 20 ft.

Legend

RAYMOND MINE RECLAMATION MAP

EXHIBIT E.6

Map prepared by Bob Oswald, High Country Consulting Services LLC

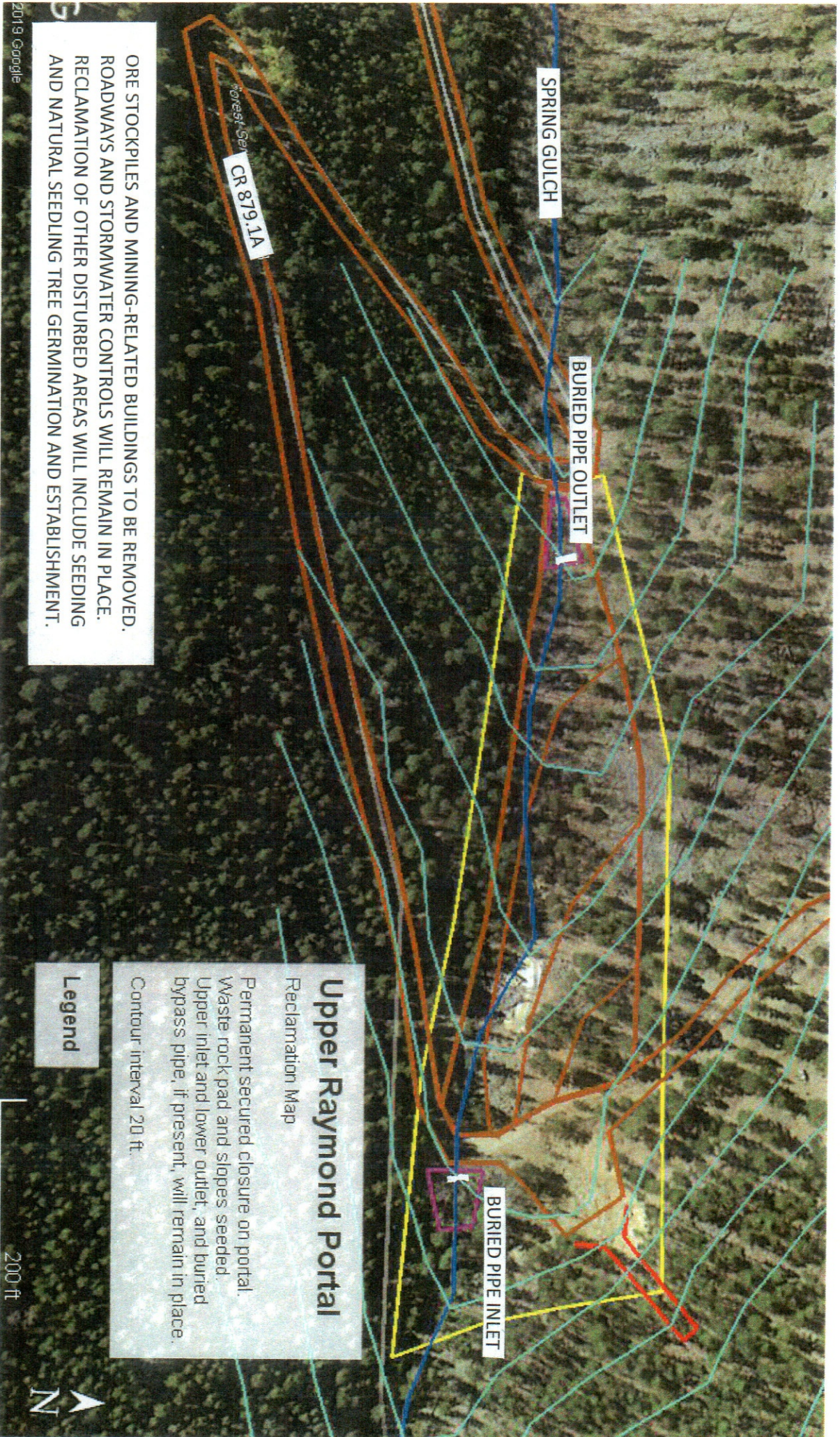
Bob Oswald
on 1/29/20 (date)

M-1020-013

2020 MAP

Submittal
Mike Wilkinson

5-6-2021



UPPER RAYMOND PORTAL RECLAMATION MAP

EXHIBIT E.7

Map prepared by Bob Oswald, High Country Consulting Services LLC

on 1/29/20 (date)
Bob Oswald

M-2020-013

2020 map

Shirley L. Sike Wilkerson

S-6-2021

Chloride Portal

Reclamation Map

Permanent secured closure on portal. Waste rock pad and slopes seeded. Roadway will remain passable. Upper inlet and lower outlet, and buried drainage bypass piped, if present, will remain in place.

Contour interval 20 ft.

Forest Service
FS 771.2A
JONES GULCH

PRIVATE RD

BURIED PIPE OUTLET

WASTE ROCK

BURIED PIPE INLET

ORE STOCKPILES AND MINING-RELATED BUILDINGS TO BE REMOVED. ROADWAYS AND STORMWATER CONTROLS WILL REMAIN IN PLACE. RECLAMATION OF OTHER DISTURBED AREAS WILL INCLUDE SEEDING AND NATURAL SEEDLING TREE GERMINATION AND ESTABLISHMENT.

Legend

200 ft



CHLORIDE PORTAL RECLAMATION MAP

EXHIBIT E.8

Map prepared by Bob Oswald, High Country Consulting Services LLC

Bob Oswald

on 1/29/20 (date)

M-2020-013 2020 map

SWS/H.L.
Sate Wilkinson

5-6-2021

Grand Prize Raise

Reclamation Map

Permanent secured closure on shaft.
Waste rock pad and slopes seeded.
Roadway will remain passable.

Contour interval 20 ft.

PRIVATE RD

WASTE ROCK

Legend

ORE STOCKPILES AND MINING-RELATED BUILDINGS TO BE REMOVED.
ROADWAYS AND STORMWATER CONTROLS WILL REMAIN IN PLACE.
RECLAMATION OF OTHER DISTURBED AREAS WILL INCLUDE SEEDING
AND NATURAL SEEDLING TREE GERMINATION AND ESTABLISHMENT.

2019 Google

GRAND PRIZE RAISE RECLAMATION MAP

EXHIBIT E.9

Map prepared by Bob Oswald, High Country Consulting Services LLC

Bob Oswald
on 1/29/20 (date)

M-2020-013 2020 MAP

Suz Wilk
Suz Wilkenson

5-6-2021

Chloride Portal and Grand Prize Raise

Chloride Portal on left, Grand Prize Raise on right.

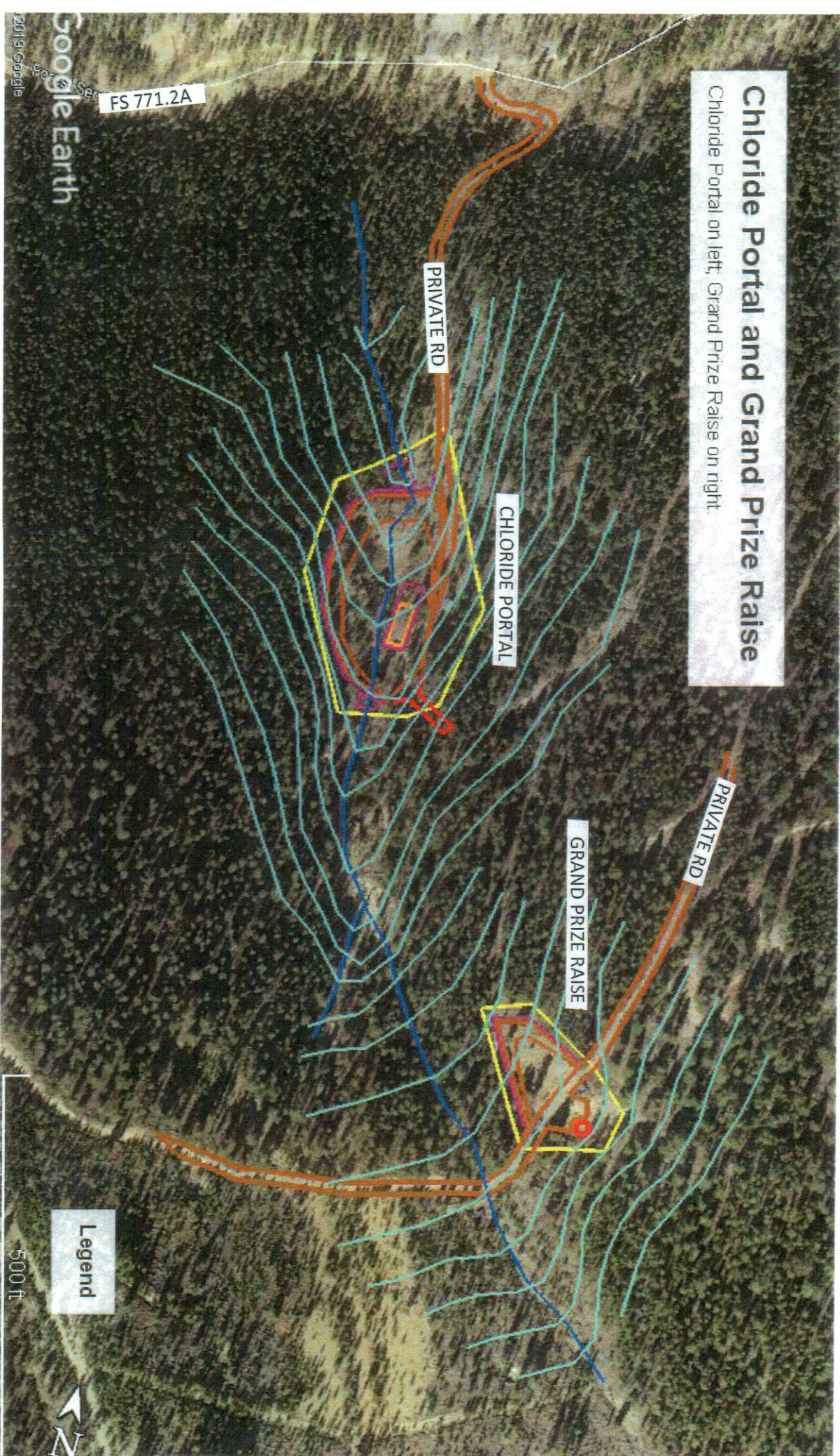


EXHIBIT E.10

Map prepared by Bob Oswald, High Country Consulting Services LLC

on 1/29/20 (date)
Bob Oswald