

Surface Water Hydrology  
(Surface Water Features and Controls)



New Horizon Mine  
Permit No. C-1981-008  
P.O. Box 628, Nuclea, CO. 81424

SCALE: 1" = 400'  
ORIGINAL DATE: 5/15/2015  
DWG. BY: ESI/TCP  
APPROVED BY: FKF

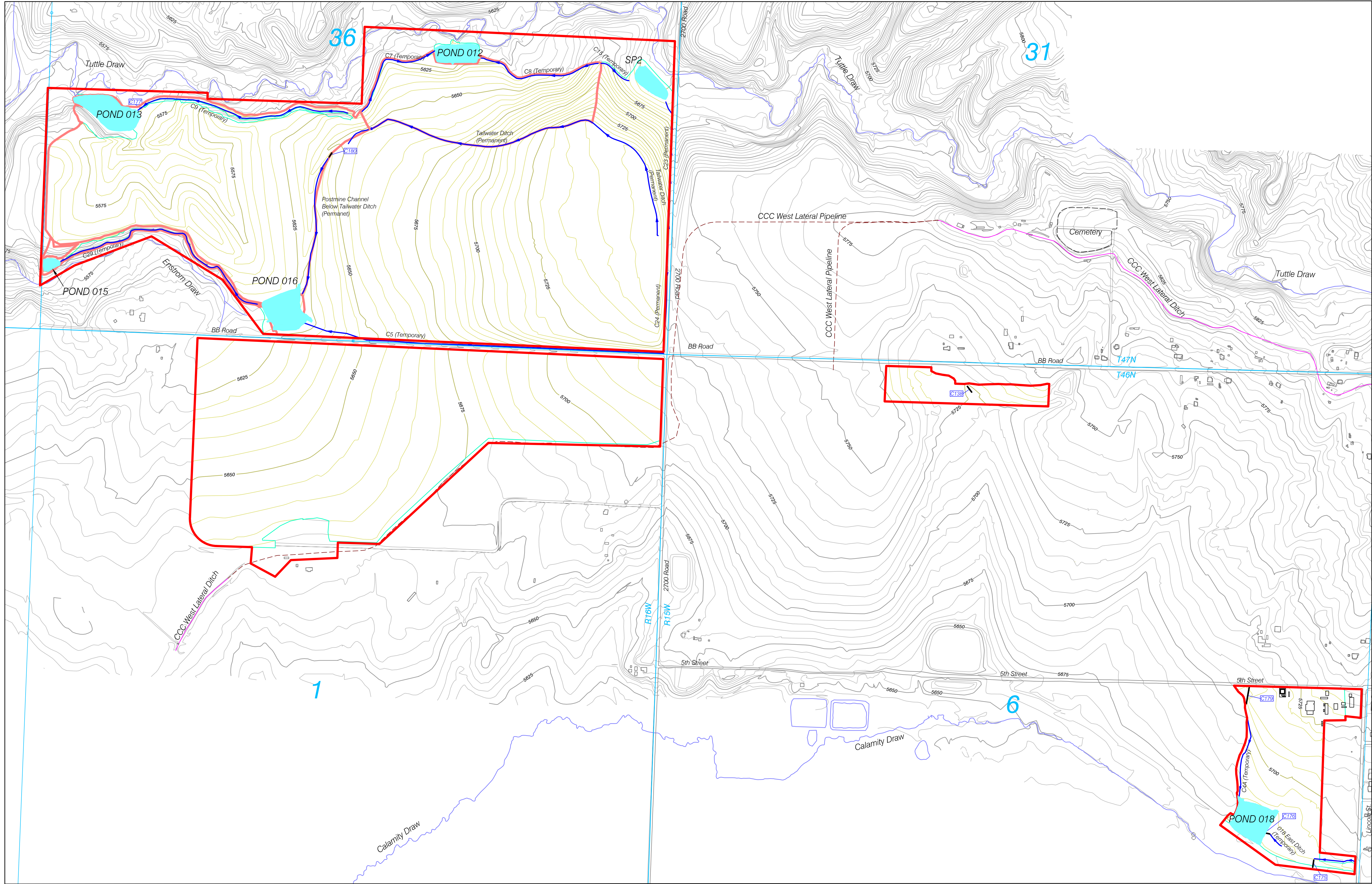
DWG NO.  
Map 2.05.3(3)-1

NO.	REVISION	DATE	BY	CHK
TR-88	Add Culvert C-180 and Postmine Channel Below Tailwater Ditch, update List of Culverts	1/29/19	JSS	FF/TT
TR-98	Reduced permit boundary and removed all data within the remove areas, added watersheds.	3/13/20	Tony	FF
TR-102	Reduced permit boundary and removed culverts 140 and 141. Removed Pond 009 watershed.	2/22/21	Tony	FF
TR-102	Fixed PMT Topography & Permit Boundary	4/13/21	Tony	FF



ENGINEERS CERTIFICATION  
I, FRANK K. FERRIS, hereby certify that this map has been reviewed by me and is true and correct to the best of my knowledge and information, relying on information supplied by experts employed by Elk Ridge Mining and Reclamation, LLC or qualified consultants working for Elk Ridge Mining and Reclamation, LLC, and that I am a Professional Engineer licensed in Colorado as required by the provisions of C.R.S. 12-25-101 through C.R.S. 12-25-119. IN WITNESS WHEREOF, I have herunder set my hand and affixed my seal.

List Of Culverts			
Item	Dia. X Length	Type	Designation
C138	18" X 60'	HDPE	Temporary
C175	24" X 60'	CMP	Temporary
C176	18" X 90'	CMP	Temporary
C177	18" X 20'	HDPE	Temporary
C179	18" X 140'	CMP	Temporary
C180	18" X 40'	CMP	Temporary



Legend

- Permit Boundary
- Streams
- CCC West Lateral Ditch
- - -

CCC West Lateral Pipeline
- Roads
- Disturbance Boundary
- Watershed Boundary
- Township & Range
- Culverts
- Buildings
- Ditches
- Sediment Pond or Stock Pond

—

Permit Boundary

—

Streams

—

CCC West Lateral Ditch

- - -

CCC West Lateral Pipeline

—

Roads

—

Disturbance Boundary

—

Watershed Boundary

—

Township & Range

—

Culverts

□

Buildings

—

Ditches

■

Sediment Pond or Stock Pond