

OXBOW MINING, LLC



3737 Hwy 133 P.O. Box 535 Somerset, Colorado 81434 USA Tel (970)929-5122 Fax (970)929-5177

February 24, 2021

Mr. Leigh Simmons
Environmental Protection Specialist
Colorado Division of Reclamation, Mining and Safety
1313 Sherman Street, Room 215
Denver, Colorado, 80203

Re: Oxbow Mining LLC, Permit No. C-1981-022, Revision to Surety Release 4 (SL4) to accommodate interests of Vessels Carbon Solutions, Inc.

Dear Mr. Simmons,

Oxbow Mining, LLC (Oxbow) proposes a revision to SL4, prepared by Savage and Savage, Inc. on Oxbow's behalf, which was submitted by Oxbow, to the Colorado Division of Reclamation, Mining, and Safety (the Division) on January 5, 2021. Removal of certain areas from SL4 will allow the Division to accelerate release of five notable areas included within SL4, which are of interest to Vessels Carbon Solutions, Inc.

The areas now included for Phase 3 Release in SL4 are:

Hubbard Creek Fan#1 aka Elk Creek Hubbard Creek Shaft
Lower Hubbard Creek Facilities aka Somerset Mine Hubbard Creek Portals
Bear Creek B-Seam Portal & Fan site (US Steel)
Sanborn Creek Mine Portals
Sanborn Creek Mine Fan site

Sampling information for these sites is included within the original SL4 submittal. Please find attachments showing images of these locations, with general lat./long. Coordinates

Oxbow understands that the Location, Bear Creek Fan Site (Vessels) will achieve Phase 3 release with the completion of Surety Release 2.

All other locations that were listed within the original SL4 submittal will be transferred to Surety Release 5 at a later date.

Oxbow appreciates the effort of the Division with this matter. Please contact me at (970) 929-6034 should you have questions or require further information.

Sincerely,

Doug A. Smith
Chief Engineer
Oxbow Mining, LLC.

HUBBARD CREEK FAN #1

38d 57m 10.08s N
107d 31m 31.89s W
LAND OWNER: OXBOW MINING, LLC

AKA: ELK CREEK MINE HUBBARD CREEK SHAFT



Legend



LOWER HUBBARD CREEK

38d 56m 45.47s N

107d 31m 10.70s W

LAND OWNER: BUREAU OF LAND MANAGEMENT

SOMERSERT MINE PORTALS

Legend
OXBOW



OXBOW



Bear Creek B-Seam Portal & Fansite (US Steel)

38d 55m 53.72s N
107d 29m 34.28s W

LAND OWNER: BUREAU OF LAND MANAGEMENT

Legend



SANBORN CREEK MINE PORTALS

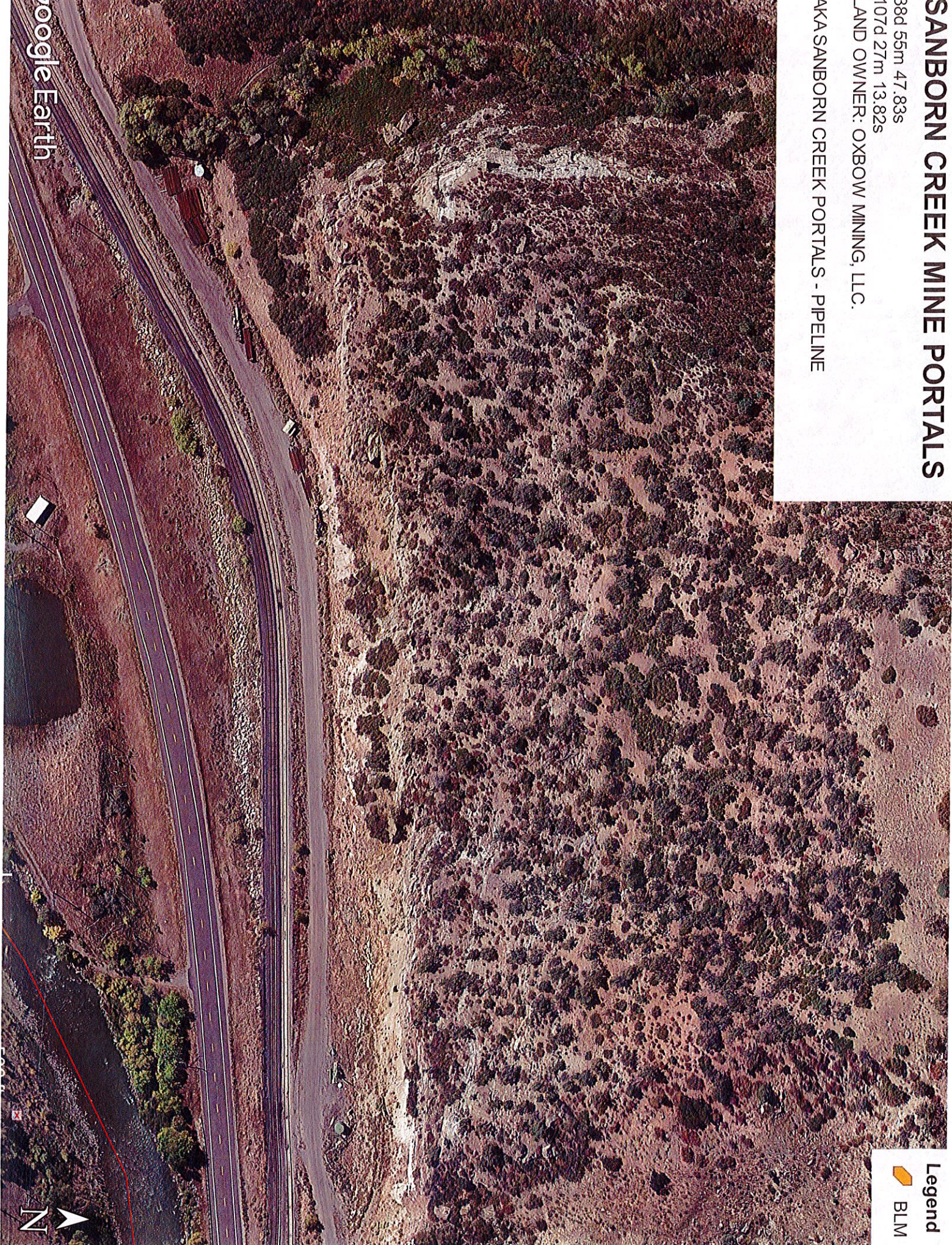
38d 55m 47.83s
107d 27m 13.82s

LAND OWNER: OXBOW MINING, LLC.

AKA SANBORN CREEK PORTALS - PIPELINE

Legend

 BLM



Google Earth

SANBORN CREEK MINE FAN SITE

38d 55m 55.11s

107d 25m 00.57s

LAND OWNER: OXBOW MINING, LLC / BUREAU OF LAND MANAGEMENT



Legend
BLM

