

d:\d2\projects by client\loveland ready mix\bokelman_walters\annual report\2021\2021.dwg,3/24/21

NOTES:

1. WEED CONTROL -- MOWING WEEDS AS NEEDED ON AREAS SEEDED WITH GRASS AND SPOT SPRAYING FOR THISTLE AND OTHER NOXIOUS WEEDS THROUGHOUT THE MINING BOUNDARY.
2. DISTURBED AREAS INSIDE SLURRY WALL REPLANTED WITH GRASS SEED. WEEDS CONTROLLED WITH MOWING AND SPOT SPRAYING FOR THISTLE AND OTHER NOXIOUS WEEDS. AREAS OUTSIDE SLURRY WALL ARE FARMED.

REFERENCE:

BACKGROUND MAPPING DATA TAKEN FROM EXHIBIT C-2, REVISION 1, DATED 4/16/15 BY WEILAND, INC. AND REVISED TO CURRENT CONDITIONS.

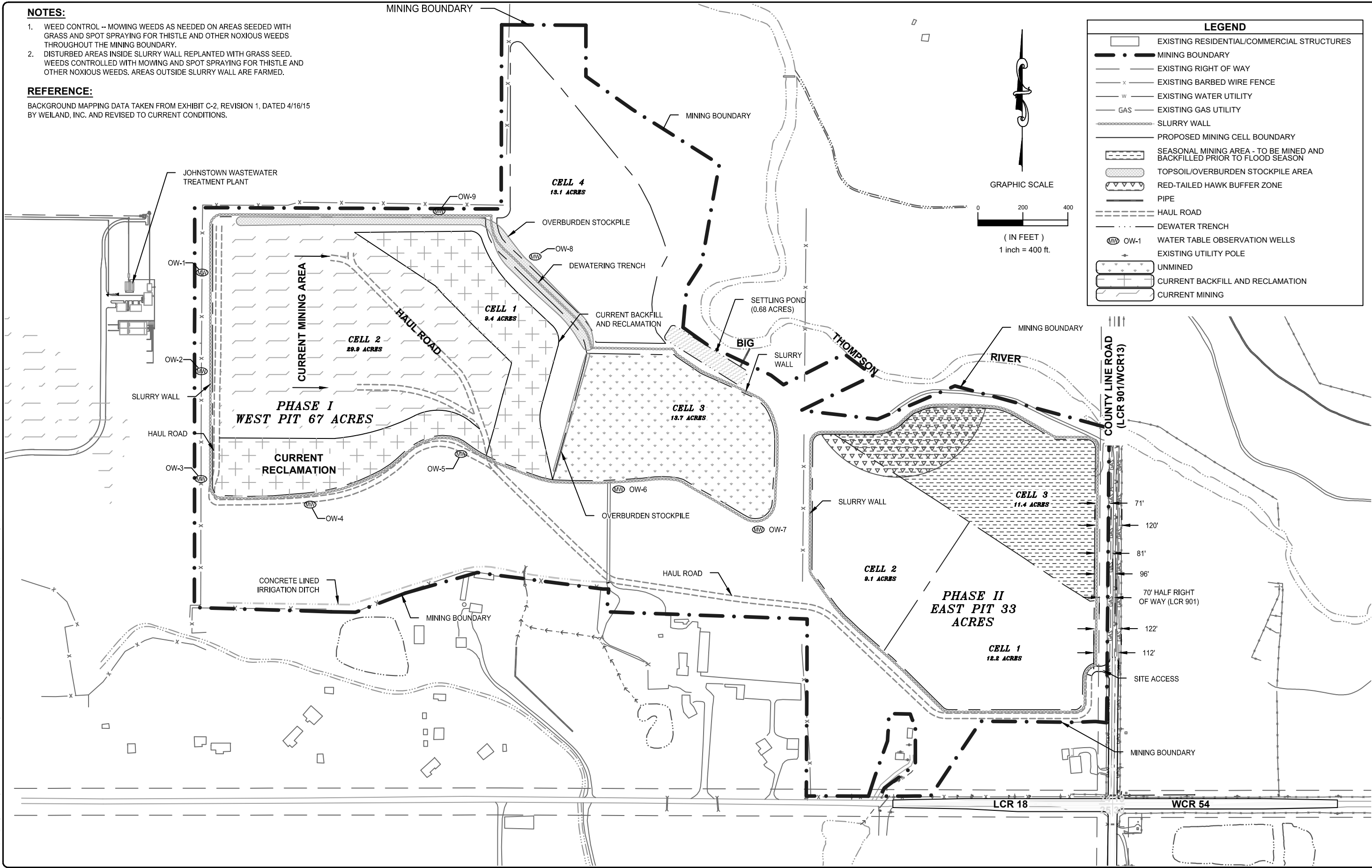


FIGURE 1

| | | | | |
|---------------------------------------|-------------|-----------|-----------|------------|
| DESIGNED: | CHECKED BY: | DATE: | SCALE: | FILE NAME: |
| | SF | 3/24/21 | 1" = 400' | 2021 |
| DATE: | | SHEET NO. | | 1 of 1 |
| 3/29/19 UPDATED TO CURRENT CONDITIONS | | | | |

WALTERS / BOKELMAN PIT

2021 ANNUAL REPORT MAP

M-2006-080

LOVELAND READY MIX CONCRETE, INC.

LARIMER COUNTY, COLORADO