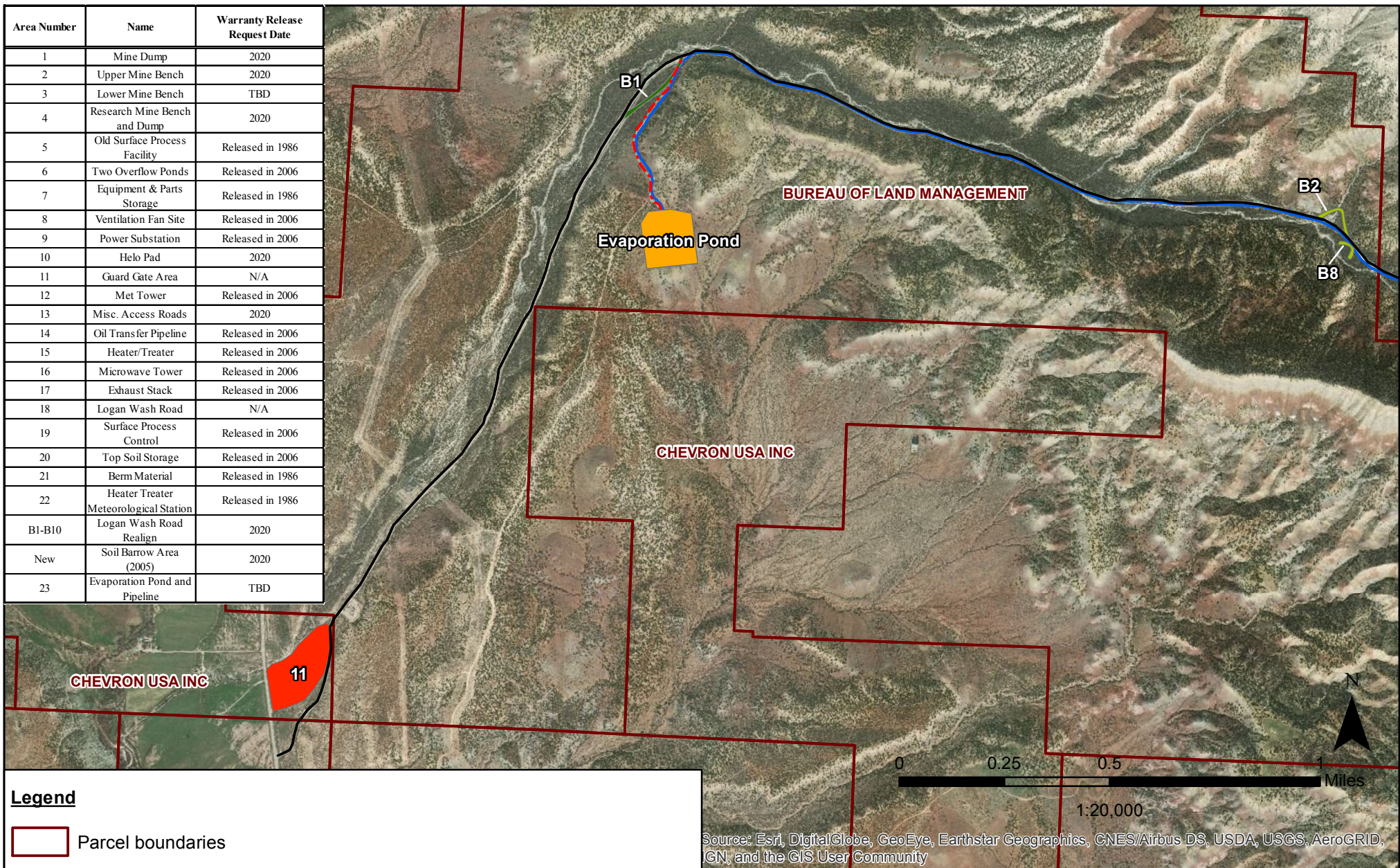


Area Number	Name	Warranty Release Request Date
1	Mine Dump	2020
2	Upper Mine Bench	2020
3	Lower Mine Bench	TBD
4	Research Mine Bench and Dump	2020
5	Old Surface Process Facility	Released in 1986
6	Two Overflow Ponds	Released in 2006
7	Equipment & Parts Storage	Released in 1986
8	Ventilation Fan Site	Released in 2006
9	Power Substation	Released in 2006
10	Helo Pad	2020
11	Guard Gate Area	N/A
12	Met Tower	Released in 2006
13	Misc. Access Roads	2020
14	Oil Transfer Pipeline	Released in 2006
15	Heater/Treater	Released in 2006
16	Microwave Tower	Released in 2006
17	Exhaust Stack	Released in 2006
18	Logan Wash Road	N/A
19	Surface Process Control	Released in 2006
20	Top Soil Storage	Released in 2006
21	Berm Material	Released in 1986
22	Heater Treater Meteorological Station	Released in 1986
B1-B10	Logan Wash Road Realign	2020
New	Soil Barrow Area (2005)	2020
23	Evaporation Pond and Pipeline	TBD



### Legend

Parcel boundaries

#### Permit Reclamation Areas

- Not to be reclaimed
- In use; Not under reclamation
- Reclaimed and released
- Under reclamation

Evaporation Pond Pipeline

#### Roads

- Not to be reclaimed
- Reclaimed
- In use; Not under reclamation

**Figure 4B. Logan Wash Mine Reclamation Status**

Garfield County, Colorado



Western Water & Land, Inc.  
Applications in Earth Science