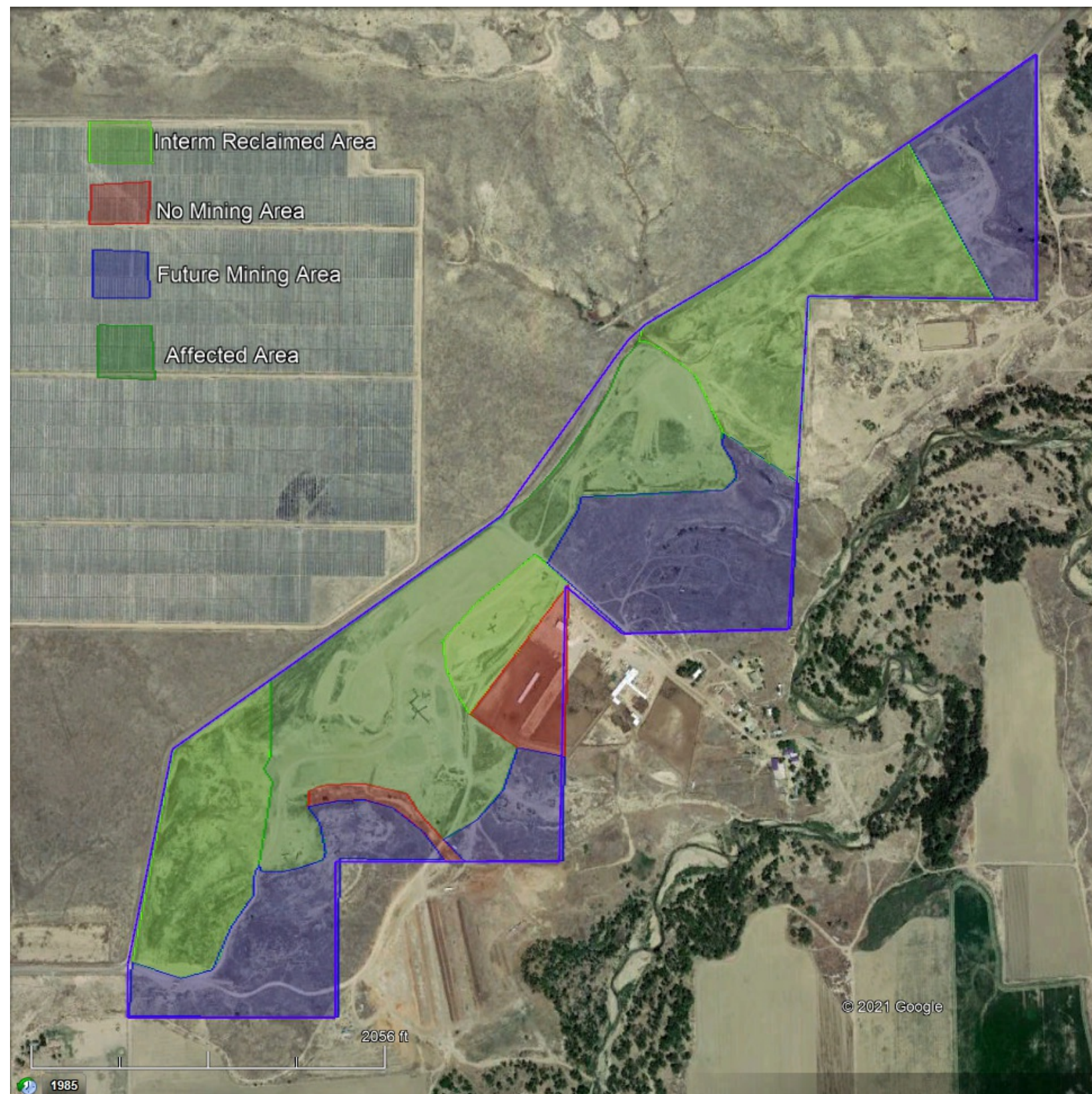


Cesar Mining Plan M-1998-101



Legend

— Permit Boundary

Mining Plan Narrative:

Areas to be mined will have overburden/topsoil stripped by dozer or scraper and stockpiled for use in reclamation. Materials will be extracted by wheel loader or excavator. Highwalls are anticipated along permit boundaries varying in heights up to approximately 20 feet.

The northeast mining area will be accessed via St Charles Road as to not affect adjacent areas in interm reclamation. Wheeled travel shall be restricted for areas in reclamation.

Areas marked affected are used for materials stockpiling and processing operations.

The areas in yellow have been brought to final grade and seeded at this time. The area in green is in final reclamation and anticipated to be released in 2020.

Future mining areas to be sloped, scarified and seeded at their completion.

Areas marked non mining areas are the corrals and the drainage in the south westerly area of the mine.

Tony J Beltramo & Sons, Inc

3/23/2021