



*Broken Arrow
Investments, LLC
801 8th Street, Suite 130
Greeley, CO 80631*

March 19, 2021

Mr. Eric Scott
Environmental Protection Specialist
State of Colorado
Division of Reclamation, Mining, & Safety
1313 Sherman Street – Room 215
Denver, CO 80203

*RE: Broken Arrow Investments, LLC – File No. M-2008-017 Derr Pit – Summary for
March Water Level Reporting*

Dear Mr. Scott,

Broken Arrow Investments, LLC is providing this summary letter to discuss and provide information in regard to the March off-site an on-site monitor wells and provide the dewatering volumes pumped for February.

During the month of February a total of 21.28 acre-feet was pumped and discharged into the on-site recharge ponds within the Derr Pit.

AgPro was able to get the normal monthly readings/measurements on all of the off-site wells for the February readings. No trigger levels were reached for any of the off-site wells. As discussed in our technical revision letter there are some on-site wells that are being removed due to the slurry wall construction and those wells have been non-accessible. Most of on-site monitor wells saw a small decrease in the elevation of the water levels. The water level elevations in the monitor wells on the Phase 1-4 portion of the pit went up on the south side by 1.60 feet and down on the north side by 1.45 feet. The drop was due to locations where dewatering pumps have been set to help keep the water level lower around the slurry wall construction. The slurry wall construction is approximately 90% complete and should be completed in late March as the construction was slowed again since the snow storm has kept construction from occurring. The water level elevations in the monitor wells on the upper terrace of the permit area increased by 0.56 feet for MW-14, decreased by 0.41 feet for MW-15, increased by 0.19 feet for MW-16, decreased by 0.20 feet for MW-17 and decreased by 0.38 feet for MW-18.

Please give me a call at (970) 566-5090 or send an e-mail to discuss further.

Sincerely,

Kelly Hodge
Broken Arrow Investments, LLC

Derr Pit Monitor Well Readings

| Well Designation | MW-1 | | | MW-2 | | |
|-----------------------|--|---|-------------------------------------|--|---|-------------------------------------|
| Top of Well (ft) | 4631.38 | | | 4630.91 | | |
| Ground Elevation (ft) | 4629.09 | | | 4629.78 | | |
| Date | Depth to Groundwater from Top of Well (ft) | Depth to Groundwater from Ground (ft) | Elevation of Groundwater (ft) | Depth to Groundwater from Top of Well (ft) | Depth to Groundwater from Ground (ft) | Elevation of Groundwater (ft) |
| September 26, 2018 | 16.73 | 14.44 | 4614.65 | 17.18 | 16.05 | 4613.73 |
| October 26, 2018 | 17.06 | 14.77 | 4614.32 | 17.06 | 15.93 | 4613.85 |
| November 20, 2018 | 17.14 | 14.85 | 4614.24 | 17.03 | 15.90 | 4613.88 |
| December 18, 2018 | 17.38 | 15.09 | 4614.00 | 17.03 | 15.90 | 4613.88 |
| January 17, 2019 | 17.72 | 15.43 | 4613.66 | 17.56 | 16.43 | 4613.35 |
| February 12, 2019 | 18.10 | 15.81 | 4613.28 | 17.95 | 16.82 | 4612.96 |
| March 7, 2019 | 18.30 | 16.01 | 4613.08 | 18.19 | 17.06 | 4612.72 |
| April 22, 2019 | 27.66 | 25.37 | 4603.72 | 19.06 | 17.93 | 4611.85 |
| May 14, 2019 | 22.31 | 20.02 | 4609.07 | 28.70 | 27.57 | 4602.21 |
| June 21, 2019 | 14.60 | 12.31 | 4616.78 | 20.28 | 19.15 | 4610.63 |
| July 24, 2019 | 16.41 | 14.12 | 4614.97 | 20.75 | 19.62 | 4610.16 |
| August 21, 2019 | 17.99 | 15.70 | 4613.39 | 21.11 | 19.98 | 4609.80 |
| September 17, 2019 | not read | #VALUE! | #VALUE! | 22.56 | 21.43 | 4608.35 |
| October 17, 2019 | 18.50 | 16.21 | 4612.88 | 22.18 | 21.05 | 4608.73 |
| November 13, 2019 | 18.46 | 16.17 | 4612.92 | 23.31 | 22.18 | 4607.60 |
| December 10, 2019 | not read | #VALUE! | #VALUE! | 23.30 | 22.17 | 4607.61 |
| January 9, 2020 | not read | #VALUE! | #VALUE! | 23.53 | 22.40 | 4607.38 |
| February 12, 2020 | not read | #VALUE! | #VALUE! | 25.04 | 23.91 | 4605.87 |
| March 12, 2020 | not read | #VALUE! | #VALUE! | 21.48 | 20.35 | 4609.43 |
| April 9, 2020 | not read | #VALUE! | #VALUE! | 19.75 | 18.62 | 4611.16 |
| May 14, 2020 | not read | #VALUE! | #VALUE! | 19.55 | 18.42 | 4611.36 |
| June 11, 2020 | not read | #VALUE! | #VALUE! | 19.81 | 18.68 | 4611.10 |
| July 9, 2020 | not read | #VALUE! | #VALUE! | 19.08 | 17.95 | 4611.83 |
| August 13, 2020 | not read | #VALUE! | #VALUE! | 22.17 | 21.04 | 4608.74 |
| September 10, 2020 | not read | #VALUE! | #VALUE! | 19.86 | 18.73 | 4611.05 |
| October 8, 2020 | not read | #VALUE! | #VALUE! | 19.99 | 18.86 | 4610.92 |
| November 12, 2020 | not read | #VALUE! | #VALUE! | 24.65 | 23.52 | 4606.26 |
| December 10, 2020 | not read | #VALUE! | #VALUE! | not read | #VALUE! | #VALUE! |
| January 14, 2021 | not read | #VALUE! | #VALUE! | not read | #VALUE! | #VALUE! |
| February 12, 2021 | not read | #VALUE! | #VALUE! | not read | #VALUE! | #VALUE! |
| March 11, 2021 | not read | #VALUE! | #VALUE! | not read | #VALUE! | #VALUE! |
| | | | | | | |
| | | | | | | |

Well Readings with a "not read" indicate the well has been damaged or removed due to its location being in conflict with the slurry wall construction

Derr Pit Monitor Well Readings

| Well Designation | MW-3 | | | MW-4 | | | MW-6 | | |
|-----------------------|--|---|-------------------------------------|--|---|-------------------------------------|--|---|-------------------------------------|
| Top of Well (ft) | 4631.38 | | | 4631.63 | | | 4633.36 | | |
| Ground Elevation (ft) | 4629.04 | | | 4629.27 | | | 4631.13 | | |
| Date | Depth to Groundwater from Top of Well (ft) | Depth to Groundwater from Ground (ft) | Elevation of Groundwater (ft) | Depth to Groundwater from Top of Well (ft) | Depth to Groundwater from Ground (ft) | Elevation of Groundwater (ft) | Depth to Groundwater from Top of Well (ft) | Depth to Groundwater from Ground (ft) | Elevation of Groundwater (ft) |
| September 26, 2018 | 17.87 | 15.53 | 4613.51 | 15.73 | 13.37 | 4615.90 | 15.31 | 13.08 | 4618.05 |
| October 26, 2018 | 17.67 | 15.33 | 4613.71 | 15.38 | 13.02 | 4616.25 | 14.89 | 12.66 | 4618.47 |
| November 20, 2018 | 17.63 | 15.29 | 4613.75 | 15.34 | 12.98 | 4616.29 | 14.78 | 12.55 | 4618.58 |
| December 18, 2018 | 17.63 | 15.29 | 4613.75 | 15.34 | 12.98 | 4616.29 | 14.78 | 12.55 | 4618.58 |
| January 17, 2019 | 18.16 | 15.82 | 4613.22 | 15.74 | 13.38 | 4615.89 | 15.13 | 12.90 | 4618.23 |
| February 12, 2019 | 18.58 | 16.24 | 4612.80 | 16.11 | 13.75 | 4615.52 | 15.49 | 13.26 | 4617.87 |
| March 7, 2019 | 18.79 | 16.45 | 4612.59 | 25.46 | 23.10 | 4606.17 | 15.74 | 13.51 | 4617.62 |
| April 22, 2019 | 19.46 | 17.12 | 4611.92 | 17.02 | 14.66 | 4614.61 | 16.34 | 14.11 | 4617.02 |
| May 14, 2019 | 20.22 | 17.88 | 4611.16 | 18.63 | 16.27 | 4613.00 | 17.63 | 15.40 | 4615.73 |
| June 21, 2019 | 20.65 | 18.31 | 4610.73 | 20.40 | 18.04 | 4611.23 | 18.55 | 16.32 | 4614.81 |
| July 24, 2019 | 20.92 | 18.58 | 4610.46 | 20.49 | 18.13 | 4611.14 | 18.61 | 16.38 | 4614.75 |
| August 21, 2019 | 21.28 | 18.94 | 4610.10 | 20.63 | 18.27 | 4611.00 | 18.95 | 16.72 | 4614.41 |
| September 17, 2019 | 22.57 | 20.23 | 4608.81 | 22.74 | 20.38 | 4608.89 | 19.54 | 17.31 | 4613.82 |
| October 17, 2019 | 22.36 | 20.02 | 4609.02 | 22.27 | 19.91 | 4609.36 | 20.00 | 17.77 | 4613.36 |
| November 13, 2019 | 23.28 | 20.94 | 4608.10 | 23.18 | 20.82 | 4608.45 | 20.30 | 18.07 | 4613.06 |
| December 10, 2019 | 23.32 | 20.98 | 4608.06 | 23.07 | 20.71 | 4608.56 | 20.28 | 18.05 | 4613.08 |
| January 9, 2020 | 23.63 | 21.29 | 4607.75 | 23.25 | 20.89 | 4608.38 | 20.48 | 18.25 | 4612.88 |
| February 12, 2020 | 25.82 | 23.48 | 4605.56 | 25.90 | 23.54 | 4605.73 | 21.77 | 19.54 | 4611.59 |
| March 12, 2020 | 22.30 | 19.96 | 4609.08 | 21.05 | 18.69 | 4610.58 | 19.72 | 17.49 | 4613.64 |
| April 9, 2020 | 20.65 | 18.31 | 4610.73 | 19.32 | 16.96 | 4612.31 | 18.00 | 15.77 | 4615.36 |
| May 14, 2020 | 20.40 | 18.06 | 4610.98 | 19.03 | 16.67 | 4612.60 | 17.72 | 15.49 | 4615.64 |
| June 11, 2020 | 20.41 | 18.07 | 4610.97 | 19.28 | 16.92 | 4612.35 | 17.52 | 15.29 | 4615.84 |
| July 9, 2020 | 19.84 | 17.50 | 4611.54 | not read | #VALUE! | #VALUE! | 17.23 | 15.00 | 4616.13 |
| August 13, 2020 | 21.03 | 18.69 | 4610.35 | not read | #VALUE! | #VALUE! | 18.62 | 16.39 | 4614.74 |
| September 10, 2020 | 20.43 | 18.09 | 4610.95 | not read | #VALUE! | #VALUE! | 17.95 | 15.72 | 4615.41 |
| October 8, 2020 | 20.39 | 18.05 | 4610.99 | not read | #VALUE! | #VALUE! | 17.54 | 15.31 | 4615.82 |
| November 12, 2020 | 23.15 | 20.81 | 4608.23 | not read | #VALUE! | #VALUE! | 18.26 | 16.03 | 4615.10 |
| December 10, 2020 | 23.77 | 21.43 | 4607.61 | not read | #VALUE! | #VALUE! | not read | #VALUE! | #VALUE! |
| January 14, 2021 | 23.72 | 21.38 | 4607.66 | not read | #VALUE! | #VALUE! | not read | #VALUE! | #VALUE! |
| February 12, 2021 | 24.02 | 21.68 | 4607.36 | not read | #VALUE! | #VALUE! | not read | #VALUE! | #VALUE! |
| March 11, 2021 | 22.42 | 20.08 | 4608.96 | not read | #VALUE! | #VALUE! | not read | #VALUE! | #VALUE! |
| | | | | | | | | | |
| | | | | | | | | | |

Well Readings with a "not read" indicate the well has been damaged or removed due to its location being in conflict with the slurry wall construction

Derr Pit Monitor Well Readings

| Well Designation | MW-7 | | | MW-8 | | | MW-9 | | |
|-----------------------|--|---|-------------------------------------|--|---|-------------------------------------|--|---|-------------------------------------|
| Top of Well (ft) | 4635.60 | | | 4635.24 | | | 4634.02 | | |
| Ground Elevation (ft) | 4633.04 | | | 4632.76 | | | 4631.72 | | |
| Date | Depth to Groundwater from Top of Well (ft) | Depth to Groundwater from Ground (ft) | Elevation of Groundwater (ft) | Depth to Groundwater from Top of Well (ft) | Depth to Groundwater from Ground (ft) | Elevation of Groundwater (ft) | Depth to Groundwater from Top of Well (ft) | Depth to Groundwater from Ground (ft) | Elevation of Groundwater (ft) |
| September 26, 2018 | not read | #VALUE! | #VALUE! | 18.07 | 15.59 | 4617.17 | 15.74 | 13.44 | 4618.28 |
| October 26, 2018 | 16.57 | 14.01 | 4619.03 | 17.79 | 15.31 | 4617.45 | 15.32 | 13.02 | 4618.70 |
| November 20, 2018 | 16.43 | 13.87 | 4619.17 | 17.71 | 15.23 | 4617.53 | 15.21 | 12.91 | 4618.81 |
| December 18, 2018 | 16.43 | 13.87 | 4619.17 | 17.71 | 15.23 | 4617.53 | 15.21 | 12.91 | 4618.81 |
| January 17, 2019 | 16.75 | 14.19 | 4618.85 | 18.09 | 15.61 | 4617.15 | 15.56 | 13.26 | 4618.46 |
| February 12, 2019 | 17.11 | 14.55 | 4618.49 | 18.44 | 15.96 | 4616.80 | 15.92 | 13.62 | 4618.10 |
| March 7, 2019 | 17.34 | 14.78 | 4618.26 | 18.65 | 16.17 | 4616.59 | 16.13 | 13.83 | 4617.89 |
| April 22, 2019 | 17.91 | 15.35 | 4617.69 | 19.27 | 16.79 | 4615.97 | 16.75 | 14.45 | 4617.27 |
| May 14, 2019 | 18.71 | 16.15 | 4616.89 | 19.91 | 17.43 | 4615.33 | 25.56 | 23.26 | 4608.46 |
| June 21, 2019 | 19.42 | 16.86 | 4616.18 | 20.73 | 18.25 | 4614.51 | 18.53 | 16.23 | 4615.49 |
| July 24, 2019 | 19.42 | 16.86 | 4616.18 | 20.90 | 18.42 | 4614.34 | 18.77 | 16.47 | 4615.25 |
| August 21, 2019 | 19.85 | 17.29 | 4615.75 | 21.41 | 18.93 | 4613.83 | 19.16 | 16.86 | 4614.86 |
| September 17, 2019 | 20.38 | 17.82 | 4615.22 | 22.27 | 19.79 | 4612.97 | 19.75 | 17.45 | 4614.27 |
| October 17, 2019 | 20.71 | 18.15 | 4614.89 | 22.51 | 20.03 | 4612.73 | 19.96 | 17.66 | 4614.06 |
| November 13, 2019 | 21.05 | 18.49 | 4614.55 | 23.01 | 20.53 | 4612.23 | 20.28 | 17.98 | 4613.74 |
| December 10, 2019 | 21.01 | 18.45 | 4614.59 | 22.97 | 20.49 | 4612.27 | 20.26 | 17.96 | 4613.76 |
| January 9, 2020 | 21.23 | 18.67 | 4614.37 | 23.21 | 20.73 | 4612.03 | 20.50 | 18.20 | 4613.52 |
| February 12, 2020 | 22.31 | 19.75 | 4613.29 | 24.46 | 21.98 | 4610.78 | 21.70 | 19.40 | 4612.32 |
| March 12, 2020 | 20.67 | 18.11 | 4614.93 | 22.20 | 19.72 | 4613.04 | 19.75 | 17.45 | 4614.27 |
| April 9, 2020 | 19.53 | 16.97 | 4616.07 | 20.78 | 18.30 | 4614.46 | 18.41 | 16.11 | 4615.61 |
| May 14, 2020 | 19.12 | 16.56 | 4616.48 | 20.43 | 17.95 | 4614.81 | 18.02 | 15.72 | 4616.00 |
| June 11, 2020 | 18.82 | 16.26 | 4616.78 | 20.29 | 17.81 | 4614.95 | 17.79 | 15.49 | 4616.23 |
| July 9, 2020 | 18.54 | 15.98 | 4617.06 | 19.88 | 17.40 | 4615.36 | 17.56 | 15.26 | 4616.46 |
| August 13, 2020 | 20.16 | 17.60 | 4615.44 | 21.99 | 19.51 | 4613.25 | 19.16 | 16.86 | 4614.86 |
| September 10, 2020 | 19.30 | 16.74 | 4616.30 | 20.58 | 18.10 | 4614.66 | 18.29 | 15.99 | 4615.73 |
| October 8, 2020 | 18.95 | 16.39 | 4616.65 | 20.30 | 17.82 | 4614.94 | Broken not read | #VALUE! | #VALUE! |
| November 12, 2020 | 19.80 | 17.24 | 4615.80 | 21.52 | 19.04 | 4613.72 | Broken not read | #VALUE! | #VALUE! |
| December 10, 2020 | 19.43 | 16.87 | 4616.17 | not read | #VALUE! | #VALUE! | Broken not read | #VALUE! | #VALUE! |
| January 14, 2021 | 20.47 | 17.91 | 4615.13 | not read | #VALUE! | #VALUE! | Broken not read | #VALUE! | #VALUE! |
| February 12, 2021 | 22.06 | 19.50 | 4613.54 | not read | #VALUE! | #VALUE! | Broken not read | #VALUE! | #VALUE! |
| March 11, 2021 | 23.51 | 20.95 | 4612.09 | not read | #VALUE! | #VALUE! | Broken not read | #VALUE! | #VALUE! |
| | | | | | | | | | |
| | | | | | | | | | |

Well Readings with a "not read" indicate the well has been damaged or removed due to its location being in conflict with the slurry wall construction

Derr Pit Monitor Well Readings

| Well Designation | MW-10 | | | MW-11 | | | MW-12 | | |
|-----------------------|--|---|-------------------------------------|--|---|-------------------------------------|--|---|-------------------------------------|
| Top of Well (ft) | 4632.11 | | | 4630.46 | | | 4631.20 | | |
| Ground Elevation (ft) | 4630.34 | | | 4628.05 | | | 4629.03 | | |
| Date | Depth to Groundwater from Top of Well (ft) | Depth to Groundwater from Ground (ft) | Elevation of Groundwater (ft) | Depth to Groundwater from Top of Well (ft) | Depth to Groundwater from Ground (ft) | Elevation of Groundwater (ft) | Depth to Groundwater from Top of Well (ft) | Depth to Groundwater from Ground (ft) | Elevation of Groundwater (ft) |
| September 26, 2018 | 14.75 | 12.98 | 4617.36 | 14.21 | 11.80 | 4616.25 | 16.58 | 14.41 | 4614.62 |
| October 26, 2018 | 13.89 | 12.12 | 4618.22 | 13.89 | 11.48 | 4616.57 | 16.51 | 14.34 | 4614.69 |
| November 20, 2018 | 14.25 | 12.48 | 4617.86 | 13.80 | 11.39 | 4616.66 | 16.49 | 14.32 | 4614.71 |
| December 18, 2018 | 14.25 | 12.48 | 4617.86 | 13.80 | 11.39 | 4616.66 | 16.49 | 14.32 | 4614.71 |
| January 17, 2019 | 14.60 | 12.83 | 4617.51 | 14.22 | 11.81 | 4616.24 | 16.95 | 14.78 | 4614.25 |
| February 12, 2019 | 14.98 | 13.21 | 4617.13 | 14.58 | 12.17 | 4615.88 | 17.33 | 15.16 | 4613.87 |
| March 7, 2019 | 24.30 | 22.53 | 4607.81 | 14.81 | 12.40 | 4615.65 | 17.54 | 15.37 | 4613.66 |
| April 22, 2019 | 15.85 | 14.08 | 4616.26 | 15.55 | 13.14 | 4614.91 | 18.03 | 15.86 | 4613.17 |
| May 14, 2019 | 26.60 | 24.83 | 4605.51 | 16.70 | 14.29 | 4613.76 | 27.43 | 25.26 | 4603.77 |
| June 21, 2019 | 18.67 | 16.90 | 4613.44 | 17.87 | 15.46 | 4612.59 | 19.09 | 16.92 | 4612.11 |
| July 24, 2019 | 18.79 | 17.02 | 4613.32 | 18.04 | 15.63 | 4612.42 | 19.62 | 17.45 | 4611.58 |
| August 21, 2019 | 19.10 | 17.33 | 4613.01 | 18.45 | 16.04 | 4612.01 | 20.23 | 18.06 | 4610.97 |
| September 17, 2019 | 19.87 | 18.10 | 4612.24 | 19.61 | 17.20 | 4610.85 | 21.61 | 19.44 | 4609.59 |
| October 17, 2019 | 20.48 | 18.71 | 4611.63 | 19.79 | 17.38 | 4610.67 | 21.31 | 19.14 | 4609.89 |
| November 13, 2019 | 20.82 | 19.05 | 4611.29 | 20.36 | 17.95 | 4610.10 | 22.43 | 20.26 | 4608.77 |
| December 10, 2019 | 20.78 | 19.01 | 4611.33 | 20.30 | 17.89 | 4610.16 | 22.41 | 20.24 | 4608.79 |
| January 9, 2020 | 20.95 | 19.18 | 4611.16 | 20.52 | 18.11 | 4609.94 | 22.67 | 20.50 | 4608.53 |
| February 12, 2020 | 22.46 | 20.69 | 4609.65 | 22.41 | 20.00 | 4608.05 | 24.09 | 21.92 | 4607.11 |
| March 12, 2020 | 19.95 | 18.18 | 4612.16 | 19.04 | 16.63 | 4611.42 | 20.78 | 18.61 | 4610.42 |
| April 9, 2020 | 17.02 | 15.25 | 4615.09 | 17.22 | 14.81 | 4613.24 | 19.22 | 17.05 | 4611.98 |
| May 14, 2020 | 17.30 | 15.53 | 4614.81 | not read | #VALUE! | #VALUE! | not read | #VALUE! | #VALUE! |
| June 11, 2020 | 17.22 | 15.45 | 4614.89 | not read | #VALUE! | #VALUE! | not read | #VALUE! | #VALUE! |
| July 9, 2020 | not read | #VALUE! | #VALUE! | not read | #VALUE! | #VALUE! | not read | #VALUE! | #VALUE! |
| August 13, 2020 | not read | #VALUE! | #VALUE! | not read | #VALUE! | #VALUE! | not read | #VALUE! | #VALUE! |
| September 10, 2020 | not read | #VALUE! | #VALUE! | not read | #VALUE! | #VALUE! | not read | #VALUE! | #VALUE! |
| October 8, 2020 | not read | #VALUE! | #VALUE! | not read | #VALUE! | #VALUE! | not read | #VALUE! | #VALUE! |
| November 12, 2020 | not read | #VALUE! | #VALUE! | not read | #VALUE! | #VALUE! | not read | #VALUE! | #VALUE! |
| December 10, 2020 | not read | #VALUE! | #VALUE! | not read | #VALUE! | #VALUE! | not read | #VALUE! | #VALUE! |
| January 14, 2021 | not read | #VALUE! | #VALUE! | not read | #VALUE! | #VALUE! | not read | #VALUE! | #VALUE! |
| February 12, 2021 | not read | #VALUE! | #VALUE! | not read | #VALUE! | #VALUE! | not read | #VALUE! | #VALUE! |
| March 11, 2021 | not read | #VALUE! | #VALUE! | not read | #VALUE! | #VALUE! | not read | #VALUE! | #VALUE! |
| | | | | | | | | | |
| | | | | | | | | | |

Well Readings with a "not read" indicate the well has been damaged or removed due to its location being in conflict with the slurry wall construction

Derr Pit Monitor Well Readings

| Well Designation | MW-13 | | | MW-14 | | | MW-15 | | |
|-----------------------|--|---|-------------------------------------|--|---|-------------------------------------|--|---|-------------------------------------|
| Top of Well (ft) | 4631.38 | | | 4660.59 | | | 4660.36 | | |
| Ground Elevation (ft) | 4628.59 | | | 4659.55 | | | 4657.92 | | |
| Date | Depth to Groundwater from Top of Well (ft) | Depth to Groundwater from Ground (ft) | Elevation of Groundwater (ft) | Depth to Groundwater from Top of Well (ft) | Depth to Groundwater from Ground (ft) | Elevation of Groundwater (ft) | Depth to Groundwater from Top of Well (ft) | Depth to Groundwater from Ground (ft) | Elevation of Groundwater (ft) |
| September 26, 2018 | 17.42 | 14.63 | 4613.96 | 49.19 | 48.15 | 4611.40 | 41.59 | 39.15 | 4618.77 |
| October 26, 2018 | 17.21 | 14.42 | 4614.17 | 45.97 | 44.93 | 4614.62 | 41.11 | 38.67 | 4619.25 |
| November 20, 2018 | 17.18 | 14.39 | 4614.20 | 45.90 | 44.86 | 4614.69 | 43.01 | 40.57 | 4617.35 |
| December 18, 2018 | 26.48 | 23.69 | 4604.90 | 45.90 | 44.86 | 4614.69 | 43.01 | 40.57 | 4617.35 |
| January 17, 2019 | 17.70 | 14.91 | 4613.68 | 46.37 | 45.33 | 4614.22 | 41.37 | 38.93 | 4618.99 |
| February 12, 2019 | 18.08 | 15.29 | 4613.30 | 46.75 | 45.71 | 4613.84 | 41.71 | 39.27 | 4618.65 |
| March 7, 2019 | 18.32 | 15.53 | 4613.06 | 46.99 | 45.95 | 4613.60 | 51.07 | 48.63 | 4609.29 |
| April 22, 2019 | 19.18 | 16.39 | 4612.20 | 47.61 | 46.57 | 4612.98 | 42.55 | 40.11 | 4617.81 |
| May 14, 2019 | 29.09 | 26.30 | 4602.29 | 48.44 | 47.40 | 4612.15 | 43.49 | 41.05 | 4616.87 |
| June 21, 2019 | 20.87 | 18.08 | 4610.51 | 49.02 | 47.98 | 4611.57 | 43.61 | 41.17 | 4616.75 |
| July 24, 2019 | 21.17 | 18.38 | 4610.21 | 50.15 | 49.11 | 4610.44 | 44.31 | 41.87 | 4616.05 |
| August 21, 2019 | 21.39 | 18.60 | 4609.99 | 49.56 | 48.52 | 4611.03 | 44.71 | 42.27 | 4615.65 |
| September 17, 2019 | 22.97 | 20.18 | 4608.41 | 50.66 | 49.62 | 4609.93 | 45.08 | 42.64 | 4615.28 |
| October 17, 2019 | 22.55 | 19.76 | 4608.83 | 50.65 | 49.61 | 4609.94 | 45.40 | 42.96 | 4614.96 |
| November 13, 2019 | 23.62 | 20.83 | 4607.76 | 50.65 | 49.61 | 4609.94 | 45.64 | 43.20 | 4614.72 |
| December 10, 2019 | 23.62 | 20.83 | 4607.76 | 51.25 | 50.21 | 4609.34 | 45.57 | 43.13 | 4614.79 |
| January 9, 2020 | 23.87 | 21.08 | 4607.51 | 51.59 | 50.55 | 4609.00 | 45.63 | 43.19 | 4614.73 |
| February 12, 2020 | 25.89 | 23.10 | 4605.49 | 53.60 | 52.56 | 4606.99 | 46.98 | 44.54 | 4613.38 |
| March 12, 2020 | 21.90 | 19.11 | 4609.48 | 50.60 | 49.56 | 4609.99 | 45.42 | 42.98 | 4614.94 |
| April 9, 2020 | 20.12 | 17.33 | 4611.26 | 49.21 | 48.17 | 4611.38 | 44.25 | 41.81 | 4616.11 |
| May 14, 2020 | not read | #VALUE! | #VALUE! | 48.82 | 47.78 | 4611.77 | 43.85 | 41.41 | 4616.51 |
| June 11, 2020 | not read | #VALUE! | #VALUE! | 48.69 | 47.65 | 4611.90 | 43.53 | 41.09 | 4616.83 |
| July 9, 2020 | not read | #VALUE! | #VALUE! | 48.25 | 47.21 | 4612.34 | 43.38 | 40.94 | 4616.98 |
| August 13, 2020 | not read | #VALUE! | #VALUE! | 49.29 | 48.25 | 4611.30 | 44.61 | 42.17 | 4615.75 |
| September 10, 2020 | not read | #VALUE! | #VALUE! | 48.91 | 47.87 | 4611.68 | 44.10 | 41.66 | 4616.26 |
| October 8, 2020 | not read | #VALUE! | #VALUE! | 48.68 | 47.64 | 4611.91 | 43.53 | 41.09 | 4616.83 |
| November 12, 2020 | not read | #VALUE! | #VALUE! | 49.63 | 48.59 | 4610.96 | 43.72 | 41.28 | 4616.64 |
| December 10, 2020 | not read | #VALUE! | #VALUE! | 49.74 | 48.70 | 4610.85 | 43.13 | 40.69 | 4617.23 |
| January 14, 2021 | not read | #VALUE! | #VALUE! | 49.26 | 48.22 | 4611.33 | 42.31 | 39.87 | 4618.05 |
| February 12, 2021 | not read | #VALUE! | #VALUE! | 49.45 | 48.41 | 4611.14 | 42.69 | 40.25 | 4617.67 |
| March 11, 2021 | not read | #VALUE! | #VALUE! | 48.89 | 47.85 | 4611.70 | 43.10 | 40.66 | 4617.26 |
| | | | | | | | | | |
| | | | | | | | | | |

Well Readings with a "not read" indicate the well has been damaged or removed due to its location being in conflict with the slurry wall construction

Derr Pit Monitor Well Readings

| Well Designation | MW-16 | | | MW-17 | | | MW-18 | | |
|-----------------------|--|---|-------------------------------------|--|---|-------------------------------------|--|---|-------------------------------------|
| Top of Well (ft) | 4656.19 | | | 4663.63 | | | 4667.49 | | |
| Ground Elevation (ft) | 4653.45 | | | 4660.53 | | | 4664.55 | | |
| Date | Depth to Groundwater from Top of Well (ft) | Depth to Groundwater from Ground (ft) | Elevation of Groundwater (ft) | Depth to Groundwater from Top of Well (ft) | Depth to Groundwater from Ground (ft) | Elevation of Groundwater (ft) | Depth to Groundwater from Top of Well (ft) | Depth to Groundwater from Ground (ft) | Elevation of Groundwater (ft) |
| September 26, 2018 | | | | | | | | | |
| October 26, 2018 | | | | | | | | | |
| November 20, 2018 | | | | | | | | | |
| December 18, 2018 | | | | | | | | | |
| January 17, 2019 | | | | | | | | | |
| February 12, 2019 | | | | | | | | | |
| March 7, 2019 | | | | | | | | | |
| April 22, 2019 | | | | | | | | | |
| May 14, 2019 | | | | | | | | | |
| June 21, 2019 | | | | | | | | | |
| July 24, 2019 | | | | | | | | | |
| August 21, 2019 | 43.63 | 40.89 | 4612.56 | 47.00 | 43.90 | 4616.63 | 46.38 | 43.44 | 4621.11 |
| September 17, 2019 | 44.44 | 41.70 | 4611.75 | 46.95 | 43.85 | 4616.68 | 46.52 | 43.58 | 4620.97 |
| October 17, 2019 | 44.52 | 41.78 | 4611.67 | 46.59 | 43.49 | 4617.04 | 46.61 | 43.67 | 4620.88 |
| November 13, 2019 | 44.87 | 42.13 | 4611.32 | 46.75 | 43.65 | 4616.88 | 46.74 | 43.80 | 4620.75 |
| December 10, 2019 | 44.91 | 42.17 | 4611.28 | 46.80 | 43.70 | 4616.83 | 46.73 | 43.79 | 4620.76 |
| January 9, 2020 | 45.30 | 42.56 | 4610.89 | 47.16 | 44.06 | 4616.47 | 46.95 | 44.01 | 4620.54 |
| February 12, 2020 | 46.53 | 43.79 | 4609.66 | 47.87 | 44.77 | 4615.76 | 47.54 | 44.60 | 4619.95 |
| March 12, 2020 | 45.22 | 42.48 | 4610.97 | 47.68 | 44.58 | 4615.95 | 47.32 | 44.38 | 4620.17 |
| April 9, 2020 | 44.38 | 41.64 | 4611.81 | 47.31 | 44.21 | 4616.32 | 46.97 | 44.03 | 4620.52 |
| May 14, 2020 | 43.90 | 41.16 | 4612.29 | 47.00 | 43.90 | 4616.63 | 46.63 | 43.69 | 4620.86 |
| June 11, 2020 | 43.50 | 40.76 | 4612.69 | 46.52 | 43.42 | 4617.11 | 46.15 | 43.21 | 4621.34 |
| July 9, 2020 | 43.33 | 40.59 | 4612.86 | 48.89 | 45.79 | 4614.74 | 46.14 | 43.20 | 4621.35 |
| August 13, 2020 | 44.61 | 41.87 | 4611.58 | 48.41 | 45.31 | 4615.22 | 47.21 | 44.27 | 4620.28 |
| September 10, 2020 | 44.25 | 41.51 | 4611.94 | 47.56 | 44.46 | 4616.07 | 46.85 | 43.91 | 4620.64 |
| October 8, 2020 | 43.56 | 40.82 | 4612.63 | 46.27 | 43.17 | 4617.36 | 46.05 | 43.11 | 4621.44 |
| November 12, 2020 | 43.85 | 41.11 | 4612.34 | 46.19 | 43.09 | 4617.44 | 46.06 | 43.12 | 4621.43 |
| December 10, 2020 | 44.03 | 41.29 | 4612.16 | 46.22 | 43.12 | 4617.41 | 45.91 | 42.97 | 4621.58 |
| January 14, 2021 | 43.68 | 40.94 | 4612.51 | 46.09 | 42.99 | 4617.54 | 45.67 | 42.73 | 4621.82 |
| February 12, 2021 | 43.84 | 41.10 | 4612.35 | 46.23 | 43.13 | 4617.40 | 45.95 | 43.01 | 4621.54 |
| March 11, 2021 | 43.65 | 40.91 | 4612.54 | 46.43 | 43.33 | 4617.20 | 46.33 | 43.39 | 4621.16 |
| | | | | | | | | | |
| | | | | | | | | | |

Well Readings with a "not read" indicate the well has been damaged or removed due to its location being in conflict with the slurry wall construction

March 16, 2021

Mr. Dave Bliss
13165 E County Line Road
Longmont, CO 80504

Dear Mr. Bliss:

AGPROfessionals' staff have been monitoring groundwater elevations on behalf of Mill Iron at your property. We perform this monitoring on the second Thursday of each month. Attached is the elevation we recorded on March 11, 2021.

| Identifier | Depth to Water from Ground Surface |
|------------|--|
| Bliss Irr | 47.23 |

Has the 2-foot trigger point for two consecutive months been met?

☐ Yes

☒ No

Please find the attached tables and graphs representing the data collected to this date. Please do not hesitate to contact me regarding these activities.

Sincerely,

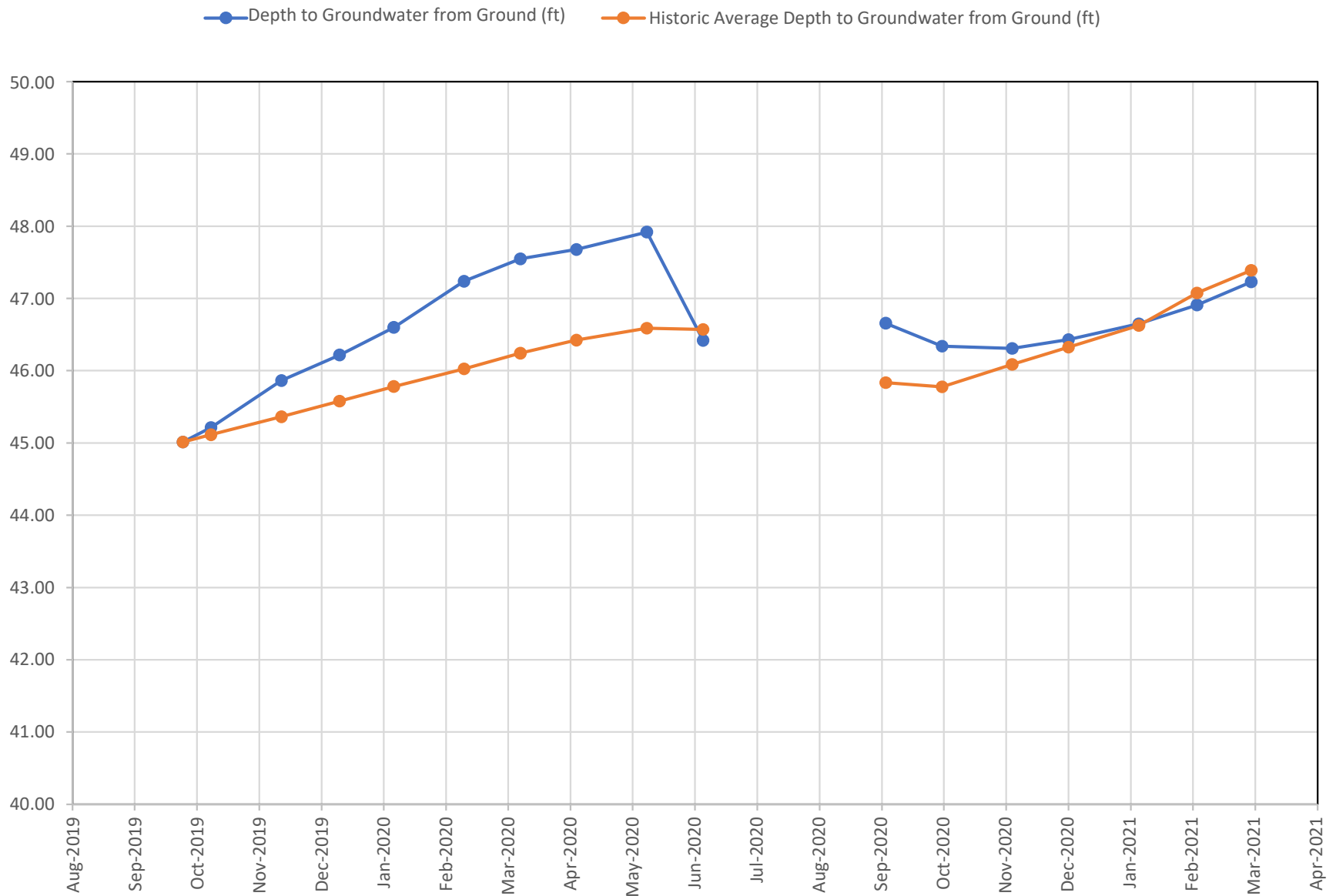


Matthew Koch, P.E.
AGPROfessionals, Environmental Engineer
970-571-4146

Derr Pit Off-Site Well Readings

| Well Designation | Bliss Irr | | | |
|--------------------|---|---------------------------------------|--|--|
| Date | Field Reading Depth to Groundwater (ft) | Depth to Groundwater from Ground (ft) | Historic Average Depth to Groundwater from Ground (ft) | Trigger Level of 2 feet below Historic Average Level Met (Yes or No) Start in May 2020 |
| September 26, 2019 | 46.20 | 45.01 | 45.01 | |
| October 10, 2019 | 46.40 | 45.21 | 45.11 | |
| November 14, 2019 | 47.05 | 45.86 | 45.36 | |
| December 13, 2019 | 47.24 | 46.22 | 45.58 | |
| January 9, 2020 | 47.62 | 46.60 | 45.78 | |
| February 13, 2020 | 48.27 | 47.24 | 46.02 | |
| March 12, 2020 | 48.57 | 47.55 | 46.24 | |
| April 9, 2020 | 48.70 | 47.68 | 46.42 | |
| May 14, 2020 | 48.94 | 47.92 | 46.59 | No |
| June 11, 2020 | 47.44 | 46.42 | 46.57 | No |
| July 9, 2020 | Pumping no read | | | No |
| August 13, 2020 | Pumping no read | | | No |
| September 10, 2020 | 47.68 | 46.66 | 45.84 | No |
| October 8, 2020 | 47.36 | 46.34 | 45.78 | No |
| November 12, 2020 | 47.25 | 46.31 | 46.09 | No |
| December 10, 2020 | 47.45 | 46.43 | 46.32 | No |
| January 14, 2021 | 47.67 | 46.65 | 46.62 | No |
| February 12, 2021 | 47.93 | 46.91 | 47.07 | No |
| March 11, 2021 | 48.25 | 47.23 | 47.39 | No |
| | | | | |
| | | | | |

BLISS IRR



Notes:

- 1) Graph displays Depth to Groundwater (lower depth to groundwater reading means higher water table elevation).
- 2) Trigger point is described in Settlement Agreement.
- 3) Since Historical Data was not established until September 2020, a year-to-date running average was used to compute historical average. As of September 2020, the historical average is computed as described in Settlement Agreement.

March 16, 2021

Mr. Rocky Francis
PO Box 843
Greeley, CO 80632

Dear Mr. Francis:

AGPROfessionals' staff have been monitoring groundwater elevations on behalf of Mill Iron at your property. We perform this monitoring on the second Thursday of each month. Attached are the elevations we recorded on March 11, 2021.

| Identifier | Depth to Water from Ground Surface |
|------------------|--|
| Francis #1 Stock | 14.71 |
| Francis #2 Irr | 13.09 |
| Francis #3 Dom | 15.17 |

Has the 2-foot trigger point for two consecutive months been met?

☐ Yes

☒ No

Please find the attached tables and graphs representing the data collected to this date. Please do not hesitate to contact me regarding these activities.

Sincerely,



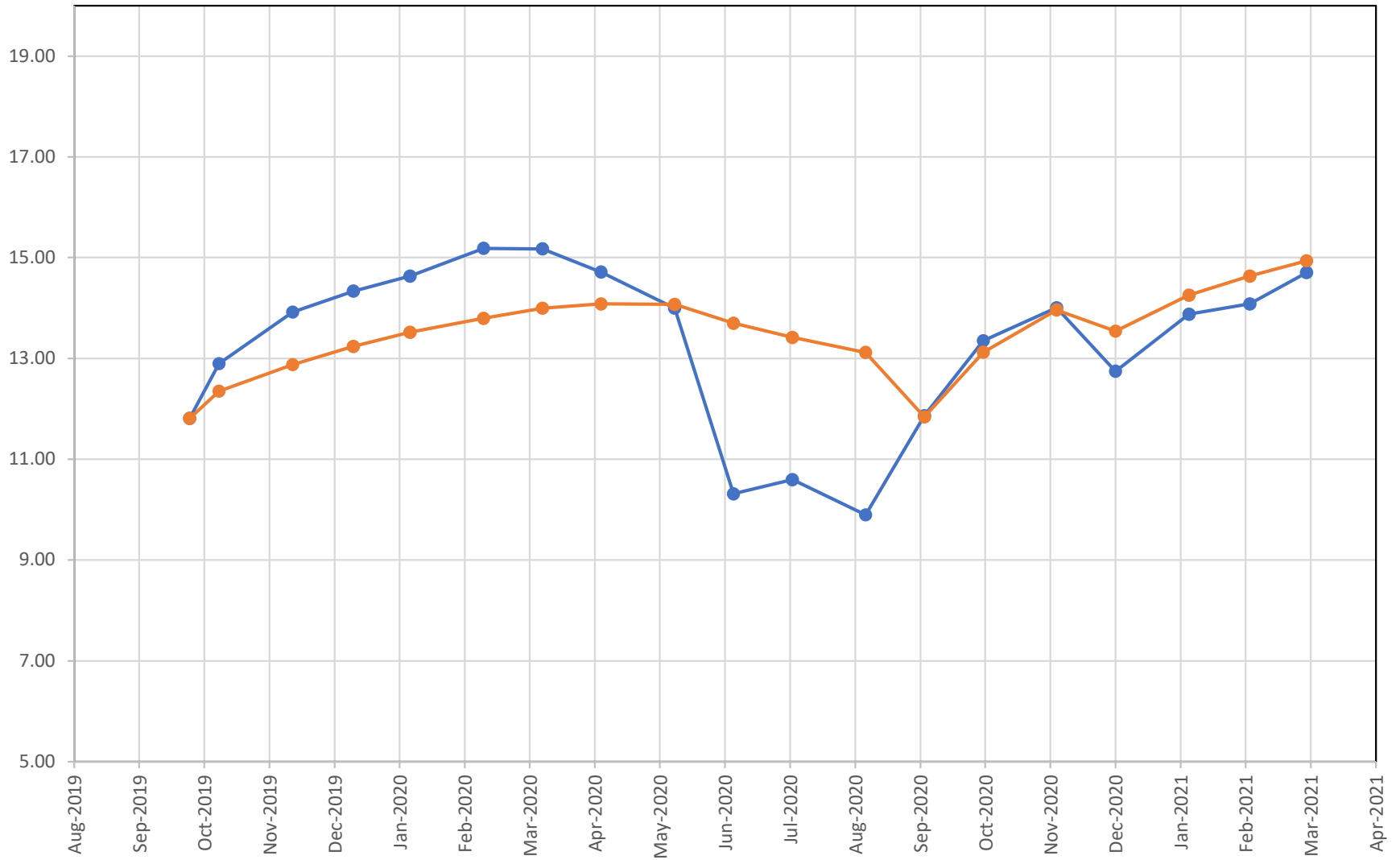
Matthew Koch, P.E.
AGPROfessionals, Environmental Engineer
970-571-4146

Derr Pit Off-Site Well Readings

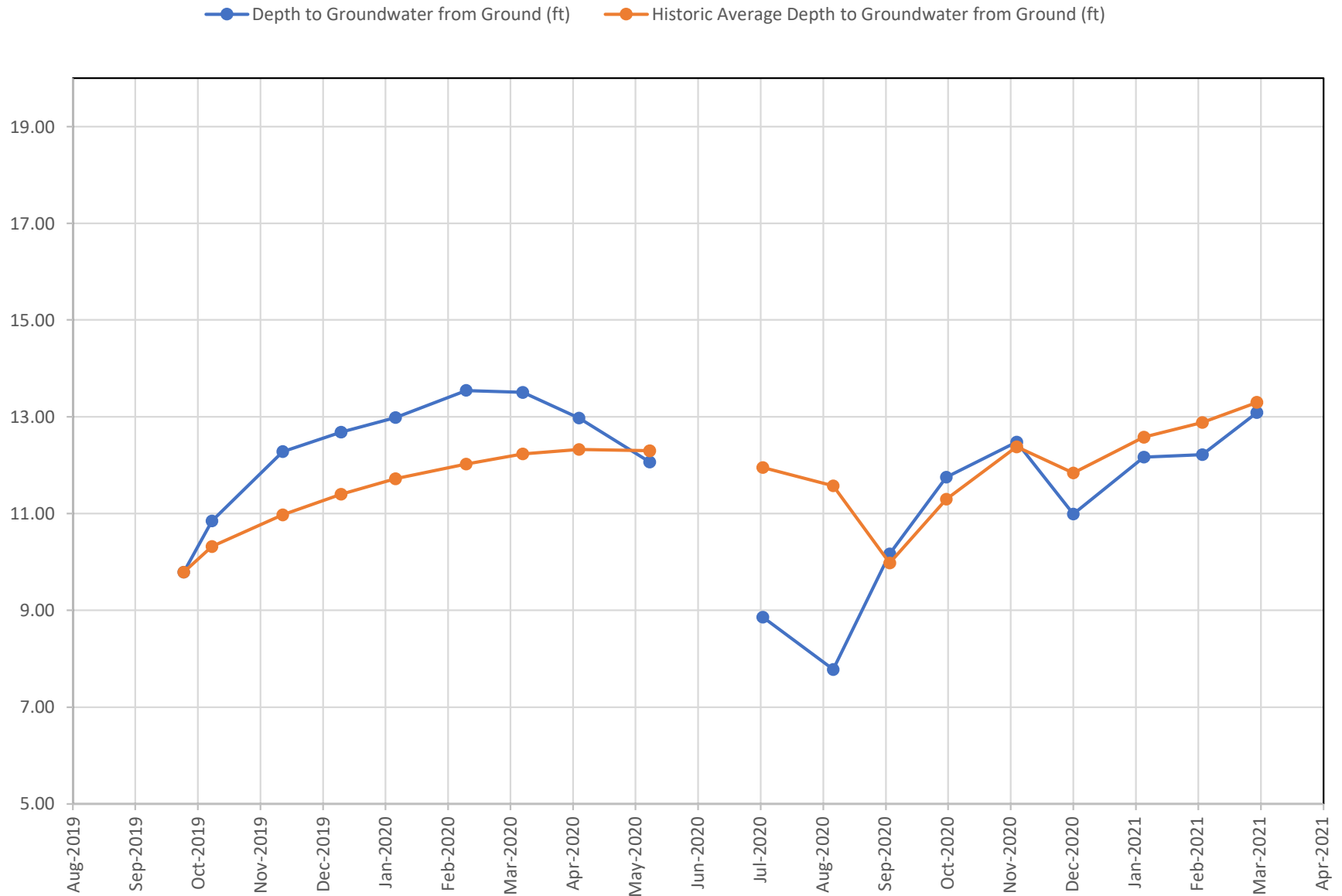
[illegible]

FRANCIS #1 STOCK

● Depth to Groundwater from Ground (ft) ● Historic Average Depth to Groundwater from Ground (ft)



FRANCIS #2 IRR

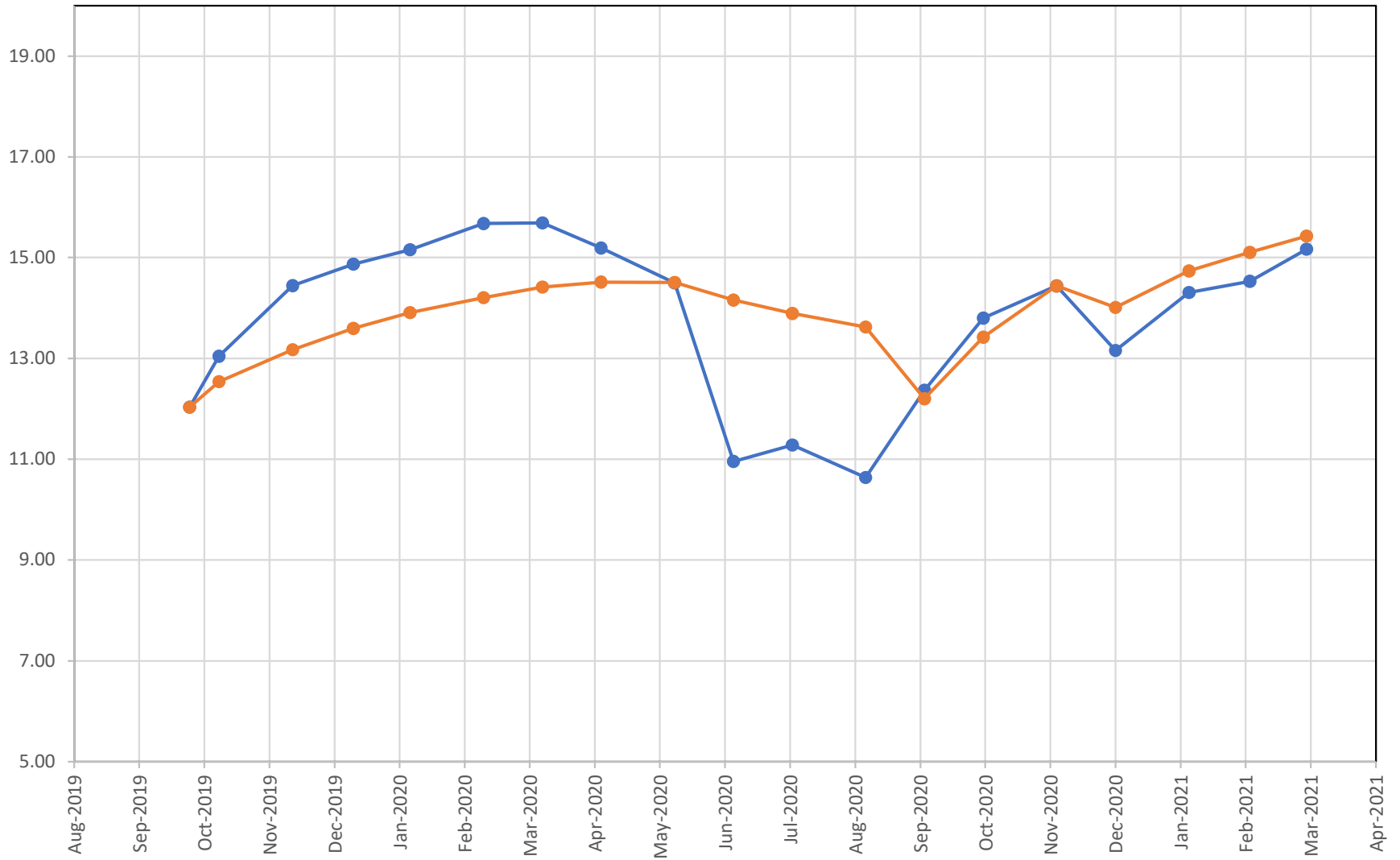


Notes:

- 1) Graph displays Depth to Groundwater (lower depth to groundwater reading means higher water table elevation).
- 2) Trigger point is described in Settlement Agreement.
- 3) Since Historical Data was not established until September 2020, a year-to-date running average was used to compute historical average. As of September 2020, the historical average is computed as described in Settlement Agreement.

FRANCIS #3 DOM

● Depth to Groundwater from Ground (ft) ● Historic Average Depth to Groundwater from Ground (ft)



March 16, 2021

Mr. Brian Harrell
288 1st Ave
Greeley, CO 80631

Dear Mr. Harrell:

AGPROfessionals' staff have been monitoring groundwater elevations on behalf of Mill Iron at your property. We perform this monitoring on the second Thursday of each month. Attached are the elevations we recorded on March 11, 2021.

| Identifier | Depth to Water from Ground Surface |
|----------------|--|
| Harrell #1 Dom | 10.95 |
| Harrell #2 Irr | 10.25 |

Has the 2-foot trigger point for two consecutive months been met?

- ☐ Yes
☒ No

Please find the attached tables and graphs representing the data collected to this date. Please do not hesitate to contact me regarding these activities.

Sincerely,

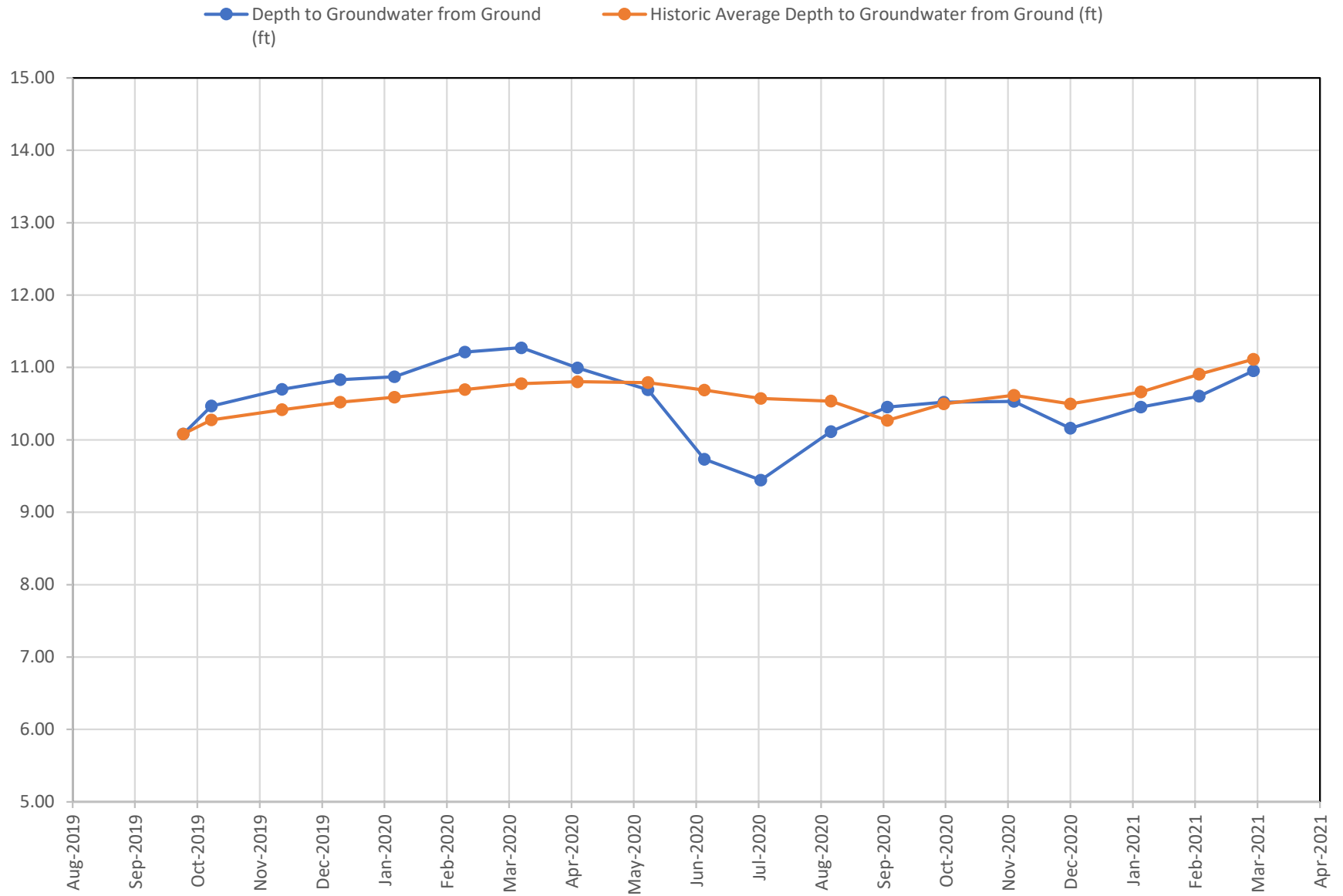


Matthew Koch, P.E.
AGPROfessionals, Environmental Engineer
970-571-4146

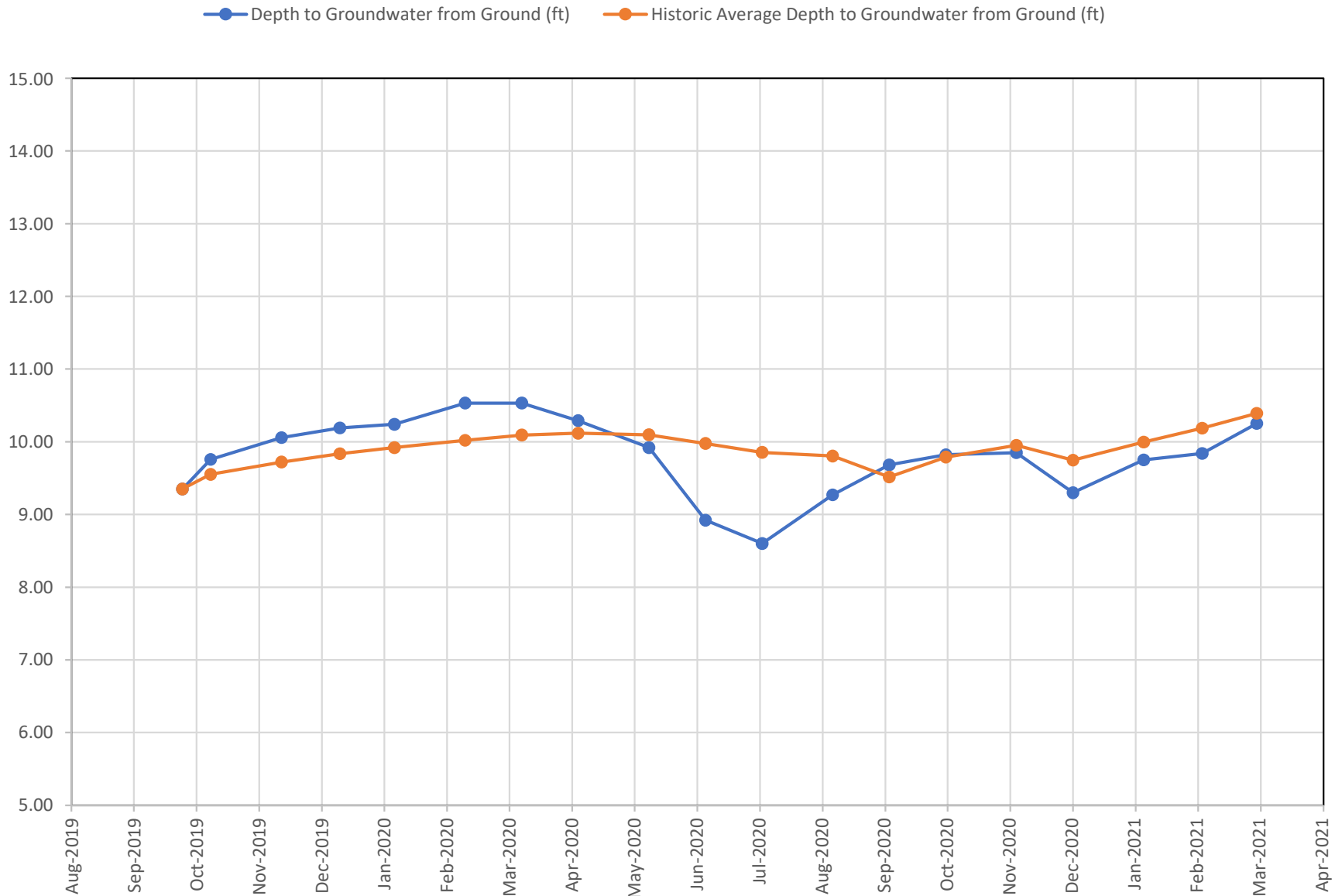
Derr Pit Off-Site Well Readings

| Well Designation | Harrell #1 Dom | | | | Harrell #2 Irr | | | |
|--------------------|---|---------------------------------------|--|--|---|---------------------------------------|--|--|
| Date | Field Reading Depth to Groundwater (ft) | Depth to Groundwater from Ground (ft) | Historic Average Depth to Groundwater from Ground (ft) | Trigger Level of 2 feet below Historic Average Level Met (Yes or No) Start in May 2020 | Field Reading Depth to Groundwater (ft) | Depth to Groundwater from Ground (ft) | Historic Average Depth to Groundwater from Ground (ft) | Trigger Level of 2 feet below Historic Average Level Met (Yes or No) Start in May 2020 |
| September 26, 2019 | 11.25 | 10.08 | 10.08 | | 10.08 | 9.35 | 9.35 | |
| October 10, 2019 | 11.80 | 10.47 | 10.28 | | 10.65 | 9.76 | 9.55 | |
| November 14, 2019 | 12.03 | 10.70 | 10.42 | | 10.95 | 10.06 | 9.72 | |
| December 13, 2019 | 12.00 | 10.83 | 10.52 | | 10.92 | 10.19 | 9.84 | |
| January 9, 2020 | 12.04 | 10.87 | 10.59 | | 10.97 | 10.24 | 9.92 | |
| February 13, 2020 | 12.38 | 11.21 | 10.69 | | 11.26 | 10.53 | 10.02 | |
| March 12, 2020 | 12.44 | 11.27 | 10.78 | | 11.26 | 10.53 | 10.09 | |
| April 9, 2020 | 12.16 | 10.99 | 10.80 | | 11.02 | 10.29 | 10.12 | |
| May 14, 2020 | 11.86 | 10.69 | 10.79 | No | 10.65 | 9.92 | 10.10 | No |
| June 11, 2020 | 10.90 | 9.73 | 10.69 | No | 9.65 | 8.92 | 9.98 | No |
| July 9, 2020 | 10.61 | 9.44 | 10.57 | No | 9.33 | 8.60 | 9.85 | No |
| August 13, 2020 | 11.28 | 10.11 | 10.53 | No | 10.00 | 9.27 | 9.81 | No |
| September 10, 2020 | 11.62 | 10.45 | 10.27 | No | 10.41 | 9.68 | 9.52 | No |
| October 8, 2020 | 11.69 | 10.52 | 10.50 | No | 10.55 | 9.82 | 9.79 | No |
| November 12, 2020 | 11.70 | 10.53 | 10.62 | No | 10.58 | 9.85 | 9.95 | No |
| December 10, 2020 | 11.33 | 10.16 | 10.50 | No | 10.03 | 9.30 | 9.75 | No |
| January 14, 2021 | 11.62 | 10.45 | 10.66 | No | 10.48 | 9.75 | 10.00 | No |
| February 12, 2021 | 11.77 | 10.60 | 10.91 | No | 10.57 | 9.84 | 10.19 | No |
| March 11, 2021 | 12.12 | 10.95 | 11.11 | No | 10.98 | 10.25 | 10.39 | No |
| | | | | | | | | |
| | | | | | | | | |

HARRELL #1 DOM



HARRELL #2 IRR



Notes:

- 1) Graph displays Depth to Groundwater (lower depth to groundwater reading means higher water table elevation).
- 2) Trigger point is described in Settlement Agreement.
- 3) Since Historical Data was not established until September 2020, a year-to-date running average was used to compute historical average. As of September 2020, the historical average is computed as described in Settlement Agreement.

March 16, 2021

Ms. Dixie Hoffner
30300 WCR 57
Gill, CO 80624

Dear Ms. Hoffner:

AGPROfessionals' staff have been monitoring groundwater elevations on behalf of Mill Iron at your property. We perform this monitoring on the second Thursday of each month. Attached are the elevations we recorded on March 11, 2021.

| Identifier | Depth to Water from Ground Surface |
|----------------|--|
| Hoffner #1 Dom | 44.45 |
| Hoffner #2 Irr | 48.78 |

Has the 2-foot trigger point for two consecutive months been met?

- ☐ Yes
☒ No

Please find the attached tables and graphs representing the data collected to this date. Please do not hesitate to contact me regarding these activities.

Sincerely,

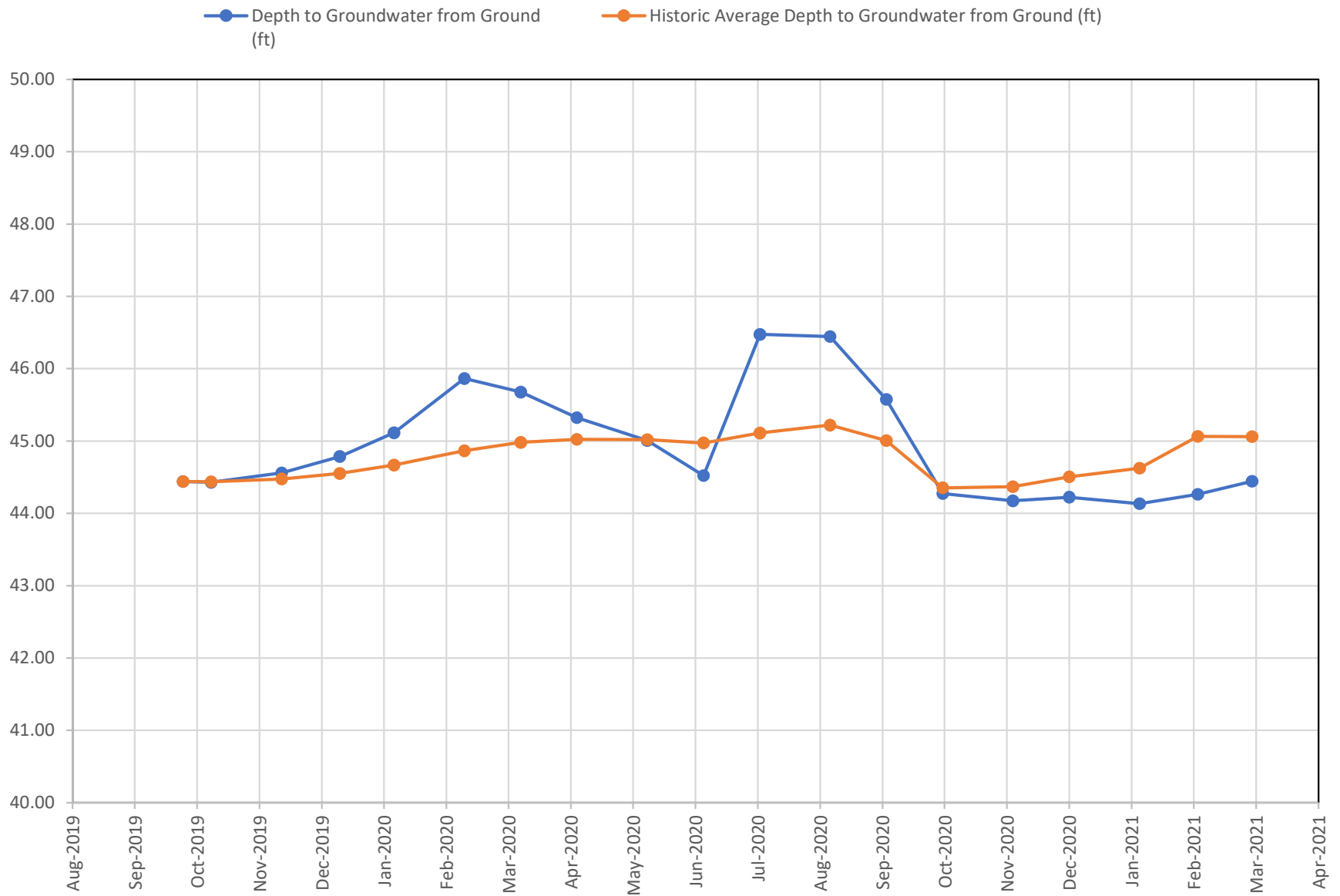


Matthew Koch, P.E.
AGPROfessionals, Environmental Engineer
970-571-4146

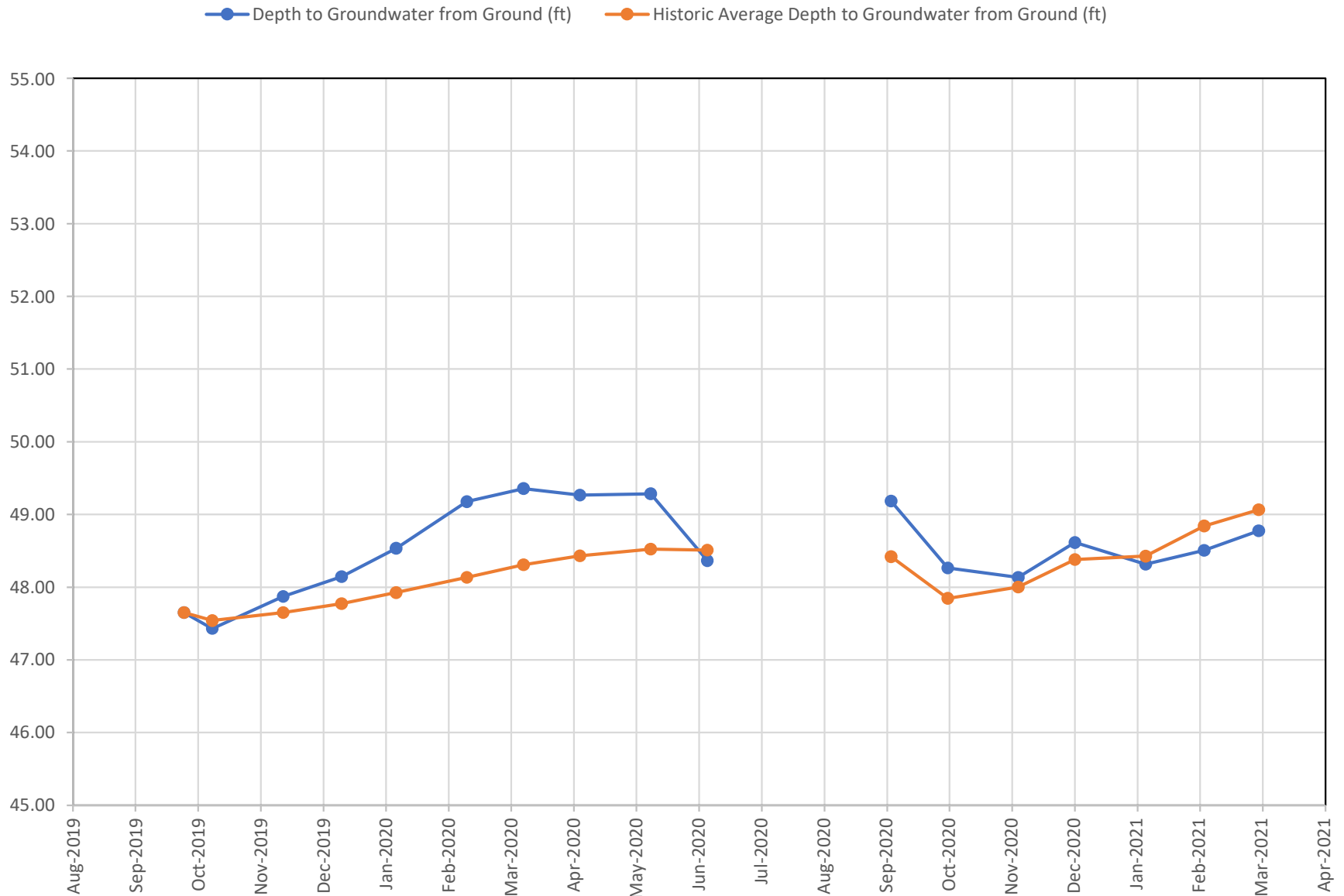
Derr Pit Off-Site Well Readings

| Well Designation | Hoffner #1 Dom | | | | Hoffner #2 Irr | | | |
|--------------------|---|---------------------------------------|--|--|---|---------------------------------------|--|--|
| Date | Field Reading Depth to Groundwater (ft) | Depth to Groundwater from Ground (ft) | Historic Average Depth to Groundwater from Ground (ft) | Trigger Level of 2 feet below Historic Average Level Met (Yes or No) Start in May 2020 | Field Reading Depth to Groundwater (ft) | Depth to Groundwater from Ground (ft) | Historic Average Depth to Groundwater from Ground (ft) | Trigger Level of 2 feet below Historic Average Level Met (Yes or No) Start in May 2020 |
| September 26, 2019 | 45.48 | 44.44 | 44.44 | | 48.67 | 47.65 | 47.65 | |
| October 10, 2019 | 45.47 | 44.43 | 44.44 | | 48.45 | 47.43 | 47.54 | |
| November 14, 2019 | 45.60 | 44.56 | 44.48 | | 48.89 | 47.87 | 47.65 | |
| December 13, 2019 | 45.66 | 44.79 | 44.55 | | 49.00 | 48.15 | 47.77 | |
| January 9, 2020 | 45.99 | 45.12 | 44.67 | | 49.39 | 48.54 | 47.93 | |
| February 13, 2020 | 46.74 | 45.87 | 44.87 | | 50.03 | 49.18 | 48.14 | |
| March 12, 2020 | 46.55 | 45.68 | 44.98 | | 50.21 | 49.36 | 48.31 | |
| April 9, 2020 | 46.20 | 45.33 | 45.02 | | 50.12 | 49.27 | 48.43 | |
| May 14, 2020 | 45.88 | 45.01 | 45.02 | No | 50.14 | 49.29 | 48.52 | No |
| June 11, 2020 | 45.40 | 44.53 | 44.97 | No | 49.22 | 48.37 | 48.51 | No |
| July 9, 2020 | 47.35 | 46.48 | 45.11 | No | Pumping no read | | | No |
| August 13, 2020 | 47.32 | 46.45 | 45.22 | No | Pumping no read | | | No |
| September 10, 2020 | 46.45 | 45.58 | 45.01 | No | 50.04 | 49.19 | 48.42 | No |
| October 8, 2020 | 45.15 | 44.28 | 44.35 | No | 49.12 | 48.27 | 47.85 | No |
| November 12, 2020 | 45.05 | 44.18 | 44.37 | No | 48.99 | 48.14 | 48.00 | No |
| December 10, 2020 | 45.10 | 44.23 | 44.51 | No | 49.47 | 48.62 | 48.38 | No |
| January 14, 2021 | 45.01 | 44.14 | 44.63 | No | 49.17 | 48.32 | 48.43 | No |
| February 12, 2021 | 45.14 | 44.27 | 45.07 | No | 49.36 | 48.51 | 48.84 | No |
| March 11, 2021 | 45.32 | 44.45 | 45.06 | No | 49.63 | 48.78 | 49.07 | No |
| | | | | | | | | |
| | | | | | | | | |

HOFFNER #1 DOM



HOFFNER #2 IRR



Notes:

- 1) Graph displays Depth to Groundwater (lower depth to groundwater reading means higher water table elevation).
- 2) Trigger point is described in Settlement Agreement.
- 3) Since Historical Data was not established until September 2020, a year-to-date running average was used to compute historical average. As of September 2020, the historical average is computed as described in Settlement Agreement.

March 16, 2021

Mr. Jim Koehler
1001 E C St.
Greeley, CO 80631

Dear Mr. Koehler:

AGPROfessionals' staff have been monitoring groundwater elevations on behalf of Mill Iron at your property. We perform this monitoring on the second Thursday of each month. Attached are the elevations we recorded on March 11, 2021.

| Identifier | Depth to Water from Ground Surface |
|-----------------------------|---------------------------------------|
| Koehler #1 Dom (Vault) | 48.39 |
| Koehler #2 Stock (Vault) | 47.29 |
| Koehler #3 Irr | 49.98 |

Has the 2-foot trigger point for two consecutive months been met?

☐ Yes

☒ No

Please find the attached tables and graphs representing the data collected to this date. Please do not hesitate to contact me regarding these activities.

Sincerely,



Matthew Koch, P.E.
AGPROfessionals, Environmental Engineer
970-571-4146

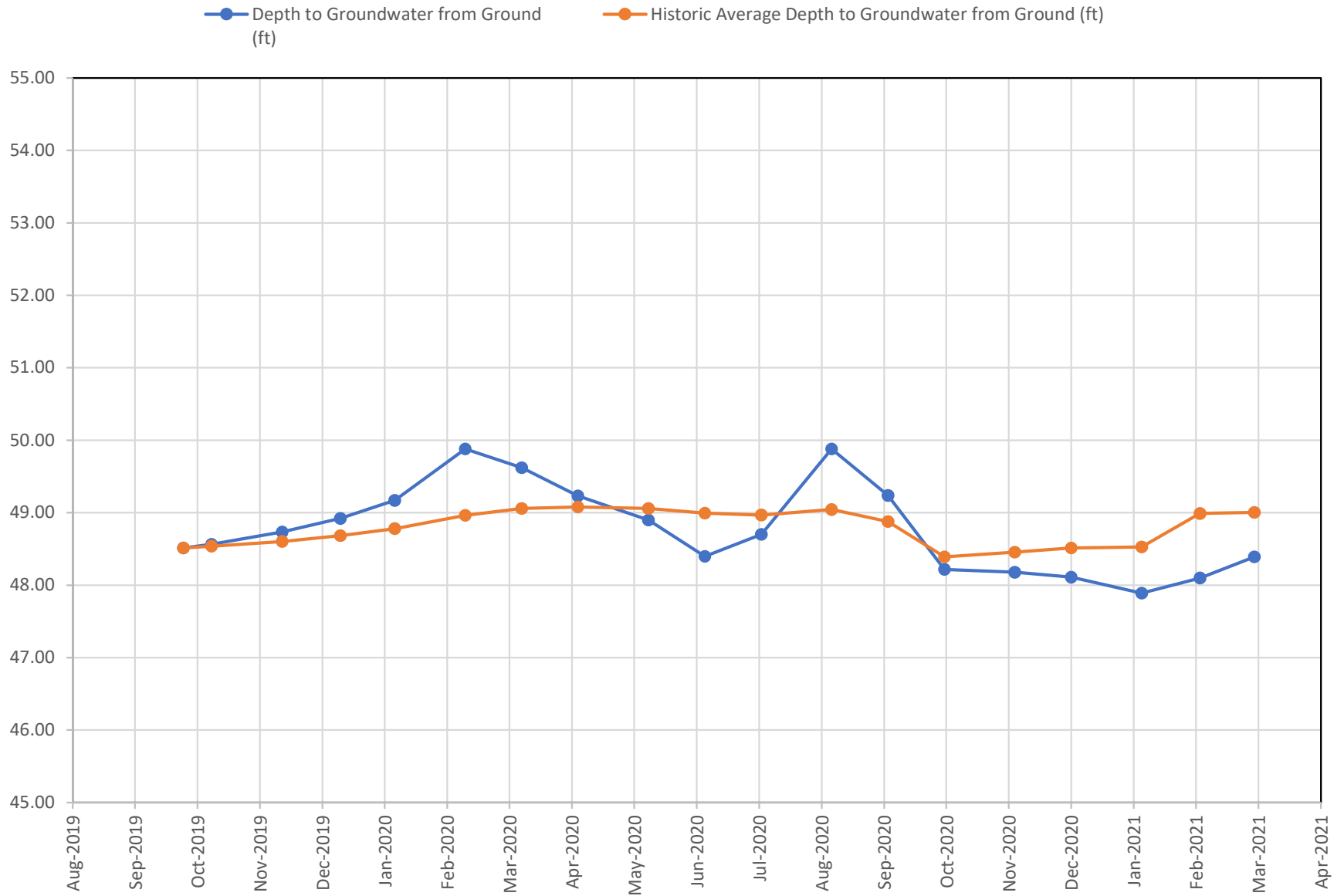
ENGINEERING, PLANNING, CONSULTING & REAL ESTATE
HQ & Mailing: 3050 67th Avenue, Suite 200, Greeley, CO 80634 | 970.535.9318 office | 970.535.9854 fax
Idaho: 195 River Vista Place, #306, Twin Falls, ID 83301 | 208.595.5301

www.agpros.com

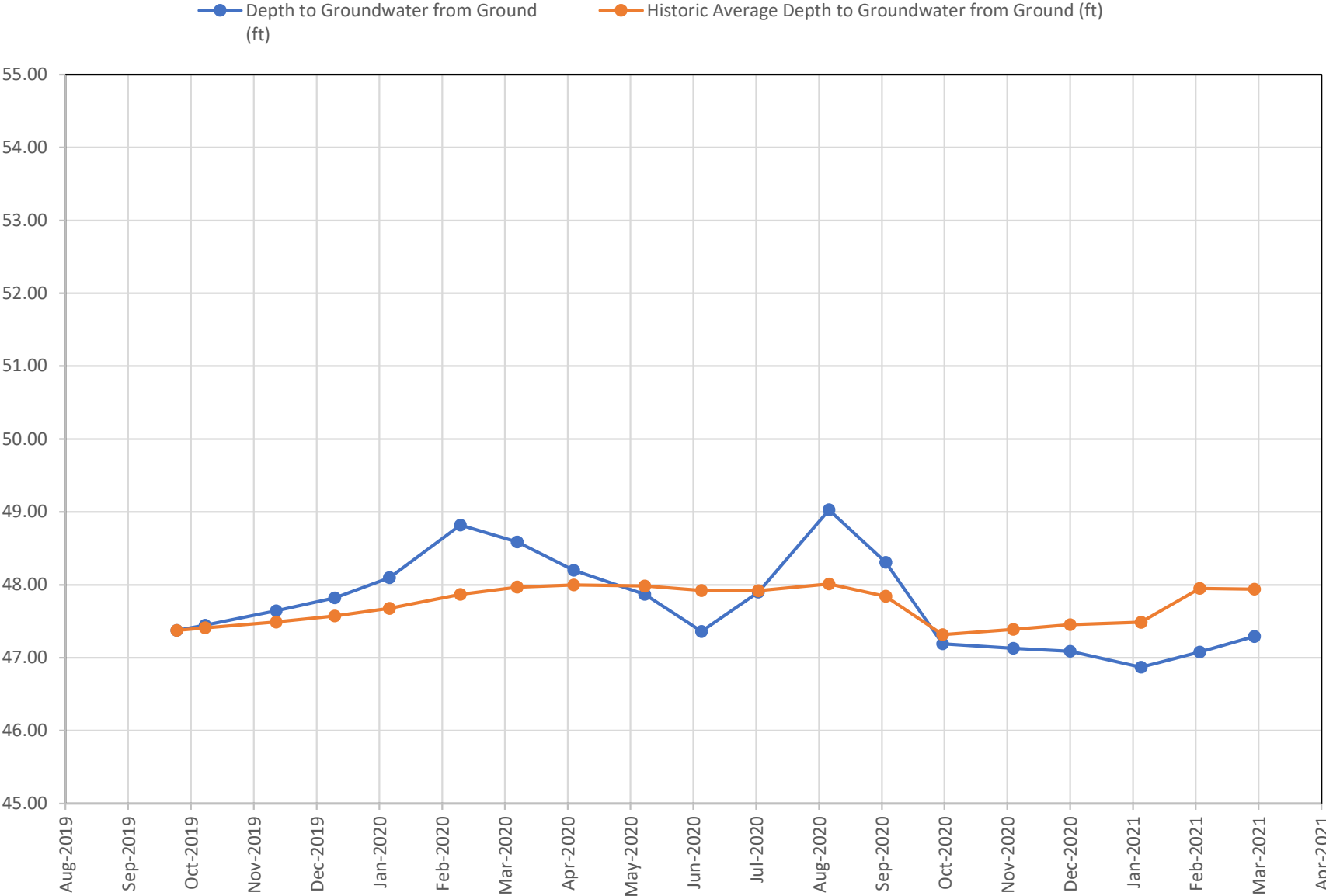
Derr Pit Off-Site Well Readings

[illegible]

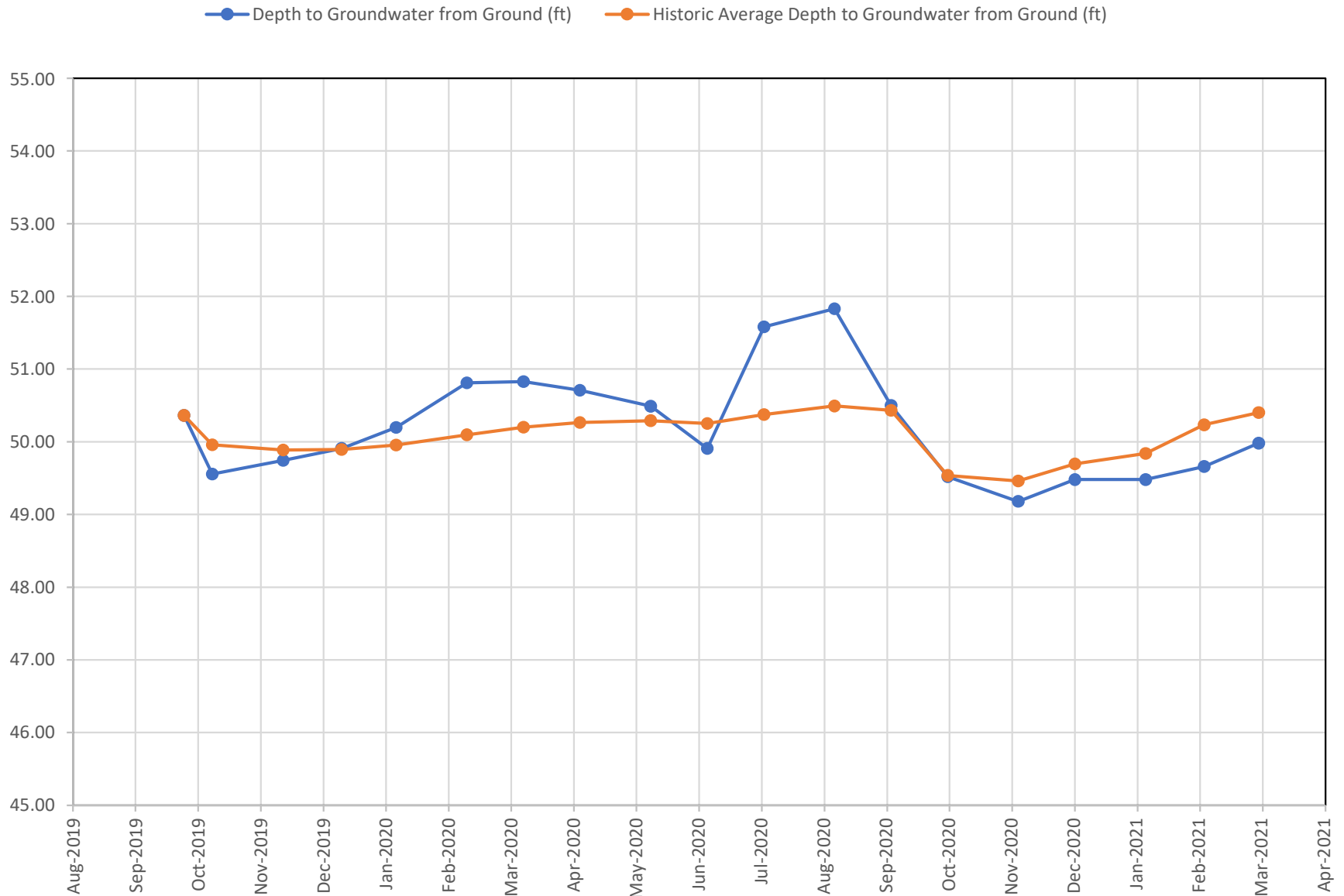
KOEHLER #1 DOM (VAULT)



KOEHLER #2 STOCK (VAULT)



KOEHLER #3 IRR



Notes:

- 1) Graph displays Depth to Groundwater (lower depth to groundwater reading means higher water table elevation).
- 2) Trigger point is described in Settlement Agreement.
- 3) Since Historical Data was not established until September 2020, a year-to-date running average was used to compute historical average. As of September 2020, the historical average is computed as described in Settlement Agreement.

March 16, 2021

Mr. Brian Murata
29485 WCR 43
Greeley, CO 80631

Dear Mr. Murata:

AGPROfessionals' staff have been monitoring groundwater elevations on behalf of Mill Iron at your property. We perform this monitoring on the second Thursday of each month. Attached is the elevation we recorded on March 11, 2021.

| Identifier | Depth to Water from Ground Surface |
|---------------|--|
| Murata #1 Irr | 47.87 |

Has the 2-foot trigger point for two consecutive months been met?

☐ Yes

☒ No

Please find the attached tables and graphs representing the data collected to this date. Please do not hesitate to contact me regarding these activities.

Sincerely,

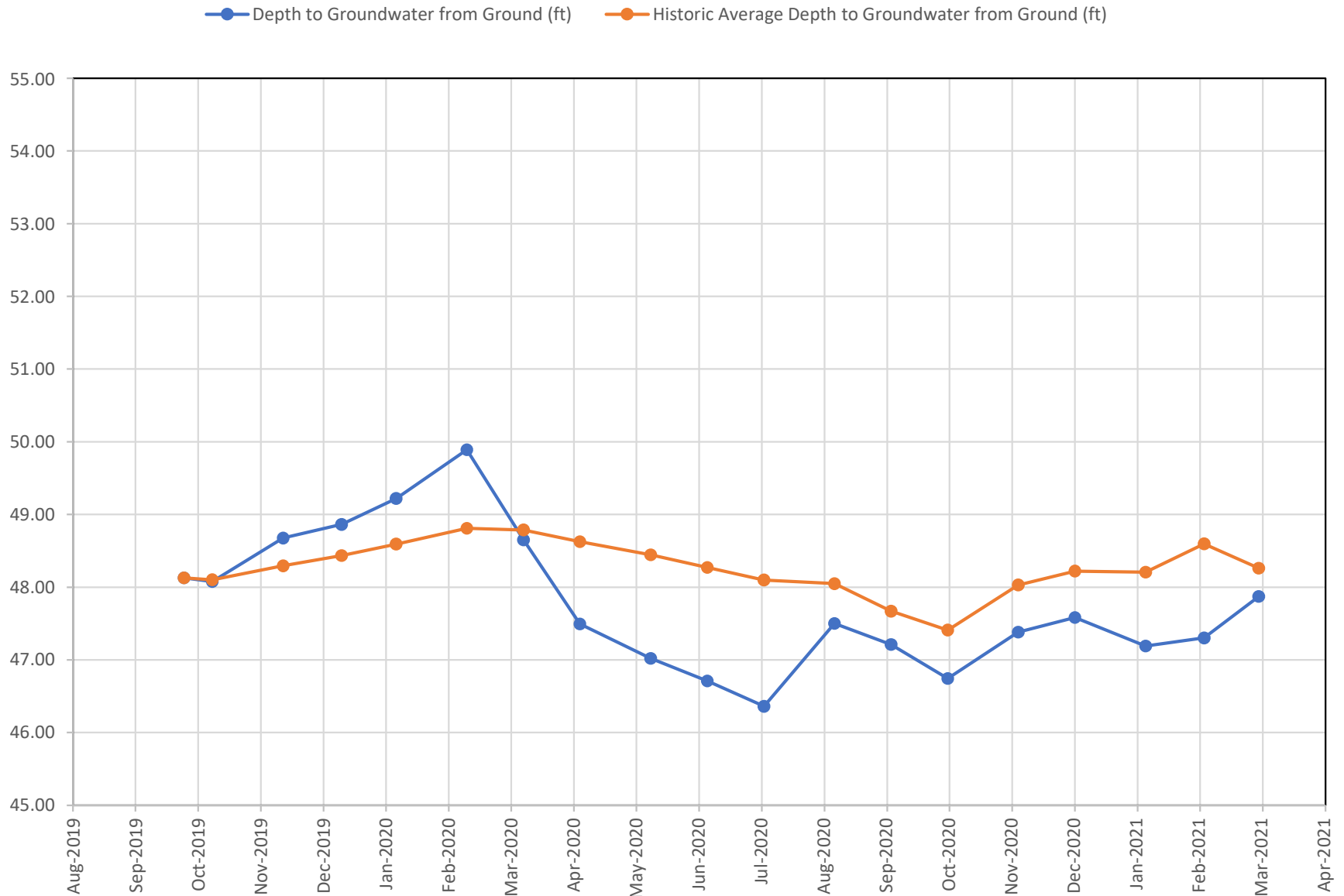


Matthew Koch, P.E.
AGPROfessionals, Environmental Engineer
970-571-4146

Derr Pit Off-Site Well Readings

| Well Designation | | Murata #1 Irr | | |
|--------------------|---|---------------------------------------|--|--|
| Date | Field Reading Depth to Groundwater (ft) | Depth to Groundwater from Ground (ft) | Historic Average Depth to Groundwater from Ground (ft) | Trigger Level of 2 feet below Historic Average Level Met (Yes or No) Start in May 2020 |
| September 26, 2019 | 50.25 | 48.13 | 48.13 | |
| October 10, 2019 | 50.20 | 48.08 | 48.10 | |
| November 14, 2019 | 50.80 | 48.68 | 48.29 | |
| December 13, 2019 | 50.82 | 48.86 | 48.44 | |
| January 9, 2020 | 51.18 | 49.22 | 48.59 | |
| February 13, 2020 | 51.85 | 49.89 | 48.81 | |
| March 12, 2020 | 50.61 | 48.65 | 48.79 | |
| April 9, 2020 | 49.45 | 47.49 | 48.63 | |
| May 14, 2020 | 48.98 | 47.02 | 48.45 | No |
| June 11, 2020 | 48.67 | 46.71 | 48.27 | No |
| July 9, 2020 | 48.32 | 46.36 | 48.10 | No |
| August 13, 2020 | 49.46 | 47.50 | 48.05 | No |
| September 10, 2020 | 49.17 | 47.21 | 47.67 | No |
| October 8, 2020 | 48.70 | 46.74 | 47.41 | No |
| November 12, 2020 | 49.34 | 47.38 | 48.03 | No |
| December 10, 2020 | 49.54 | 47.58 | 48.22 | No |
| January 14, 2021 | 49.15 | 47.19 | 48.21 | No |
| February 12, 2021 | 49.26 | 47.30 | 48.60 | No |
| March 11, 2021 | 49.83 | 47.87 | 48.26 | No |
| | | | | |
| | | | | |

MURATA #1 IRR



Notes:

- 1) Graph displays Depth to Groundwater (lower depth to groundwater reading means higher water table elevation).
- 2) Trigger point is described in Settlement Agreement.
- 3) Since Historical Data was not established until September 2020, a year-to-date running average was used to compute historical average. As of September 2020, the historical average is computed as described in Settlement Agreement.

March 16, 2021

Ms. Silvia Parker
211 Balsam Avenue
Greeley, CO 80631

Dear Ms. Parker:

AGPROfessionals' staff have been monitoring groundwater elevations on behalf of Mill Iron at your property. We perform this monitoring on the second Thursday of each month. Attached is the elevation we recorded on March 11, 2021.

| Identifier | Depth to Water from Ground Surface |
|--------------------|--|
| Parker Dom (Vault) | 41.87 |

Has the 2-foot trigger point for two consecutive months been met?

- ☐ Yes
☒ No

Please find the attached tables and graphs representing the data collected to this date. Please do not hesitate to contact me regarding these activities.

Sincerely,

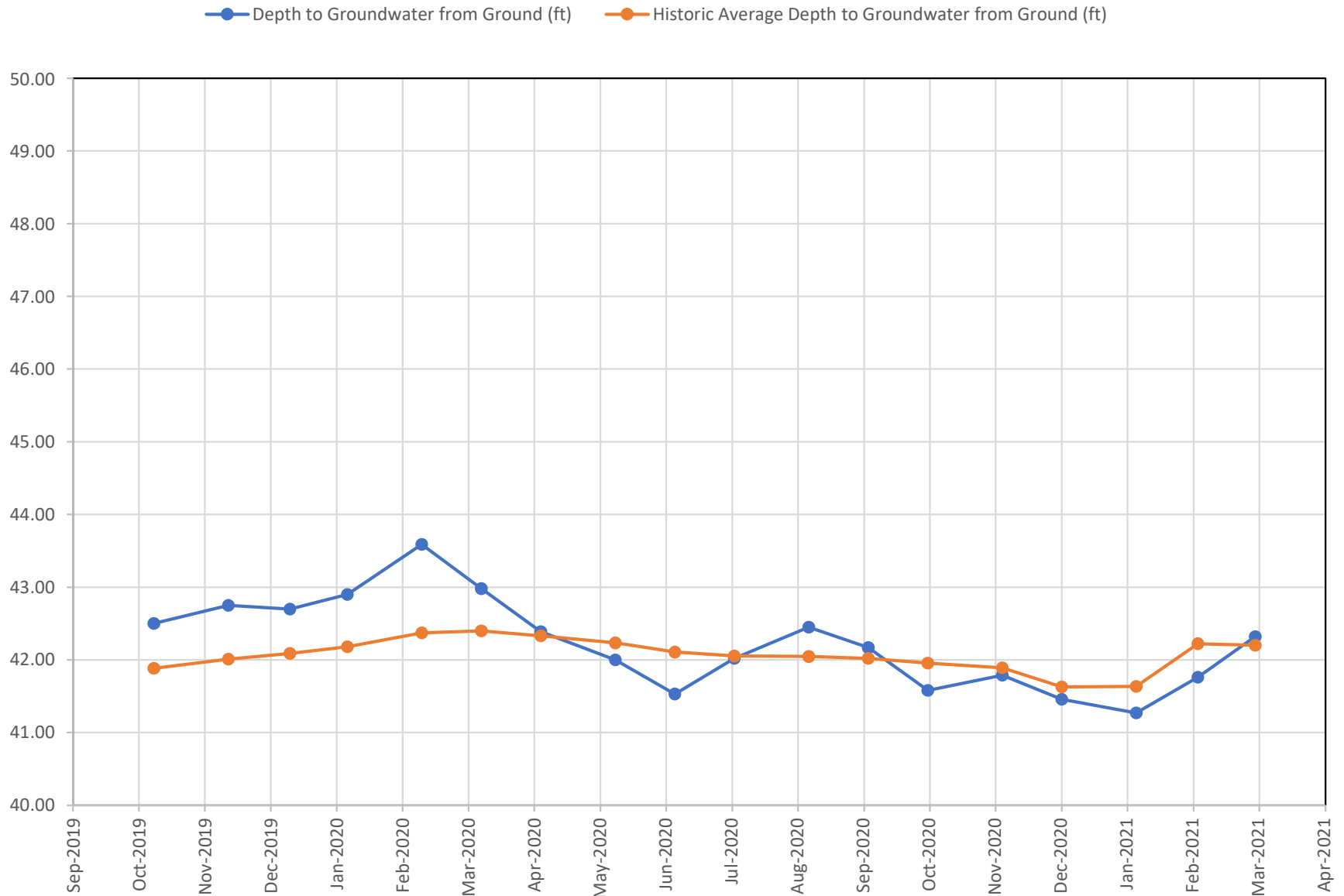


Matthew Koch, P.E.
AGPROfessionals, Environmental Engineer
970-571-4146

Derr Pit Off-Site Well Readings

| Well Designation | Parker Dom | | | |
|--------------------|---|---------------------------------------|--|--|
| Date | Field Reading Depth to Groundwater (ft) | Depth to Groundwater from Ground (ft) | Historic Average Depth to Groundwater from Ground (ft) | Trigger Level of 2 feet below Historic Average Level Met (Yes or No) Start in May 2020 |
| September 26, 2019 | no reading | no reading | no reading | |
| October 10, 2019 | 42.50 | 41.89 | 41.89 | |
| November 14, 2019 | 42.75 | 42.14 | 42.01 | |
| December 13, 2019 | 42.70 | 42.25 | 42.09 | |
| January 9, 2020 | 42.90 | 42.45 | 42.18 | |
| February 13, 2020 | 43.59 | 43.14 | 42.37 | |
| March 12, 2020 | 42.98 | 42.53 | 42.40 | |
| April 9, 2020 | 42.39 | 41.94 | 42.33 | |
| May 14, 2020 | 42.00 | 41.55 | 42.24 | No |
| June 11, 2020 | 41.53 | 41.08 | 42.11 | No |
| July 9, 2020 | 42.02 | 41.57 | 42.05 | No |
| August 13, 2020 | 42.45 | 42.00 | 42.05 | No |
| September 10, 2020 | 42.17 | 41.72 | 42.02 | No |
| October 8, 2020 | 41.58 | 41.13 | 41.96 | No |
| November 12, 2020 | 41.79 | 41.34 | 41.89 | No |
| December 10, 2020 | 41.46 | 41.01 | 41.63 | No |
| January 14, 2021 | 41.27 | 40.82 | 41.64 | No |
| February 12, 2021 | 41.76 | 41.31 | 42.23 | No |
| March 11, 2021 | 42.32 | 41.87 | 42.20 | No |
| | | | | |
| | | | | |

PARKER DOM



Notes:

- 1) Graph displays Depth to Groundwater (lower depth to groundwater reading means higher water table elevation).
- 2) Trigger point is described in Settlement Agreement.
- 3) Since Historical Data was not established until September 2020, a year-to-date running average was used to compute historical average. As of September 2020, the historical average is computed as described in Settlement Agreement.

March 16, 2021

Ms. Diane Taylor
665 Balsam Ave
Greeley, CO 80631

Dear Ms. Taylor:

AGPROfessionals' staff have been monitoring groundwater elevations on behalf of Mill Iron at your property. We perform this monitoring on the second Thursday of each month. Attached is the elevation we recorded on March 11, 2021.

| Identifier | Depth to Water from Ground Surface |
|------------|--|
| Taylor Dom | 20.46 |

Has the 2-foot trigger point for two consecutive months been met?

☐ Yes

☒ No

Please find the attached tables and graphs representing the data collected to this date. Please do not hesitate to contact me regarding these activities.

Sincerely,



Matthew Koch, P.E.
AGPROfessionals, Environmental Engineer
970-571-4146

ENGINEERING, PLANNING, CONSULTING & REAL ESTATE

HQ & Mailing: 3050 67th Avenue, Suite 200, Greeley, CO 80634 | 970.535.9318 office | 970.535.9854 fax

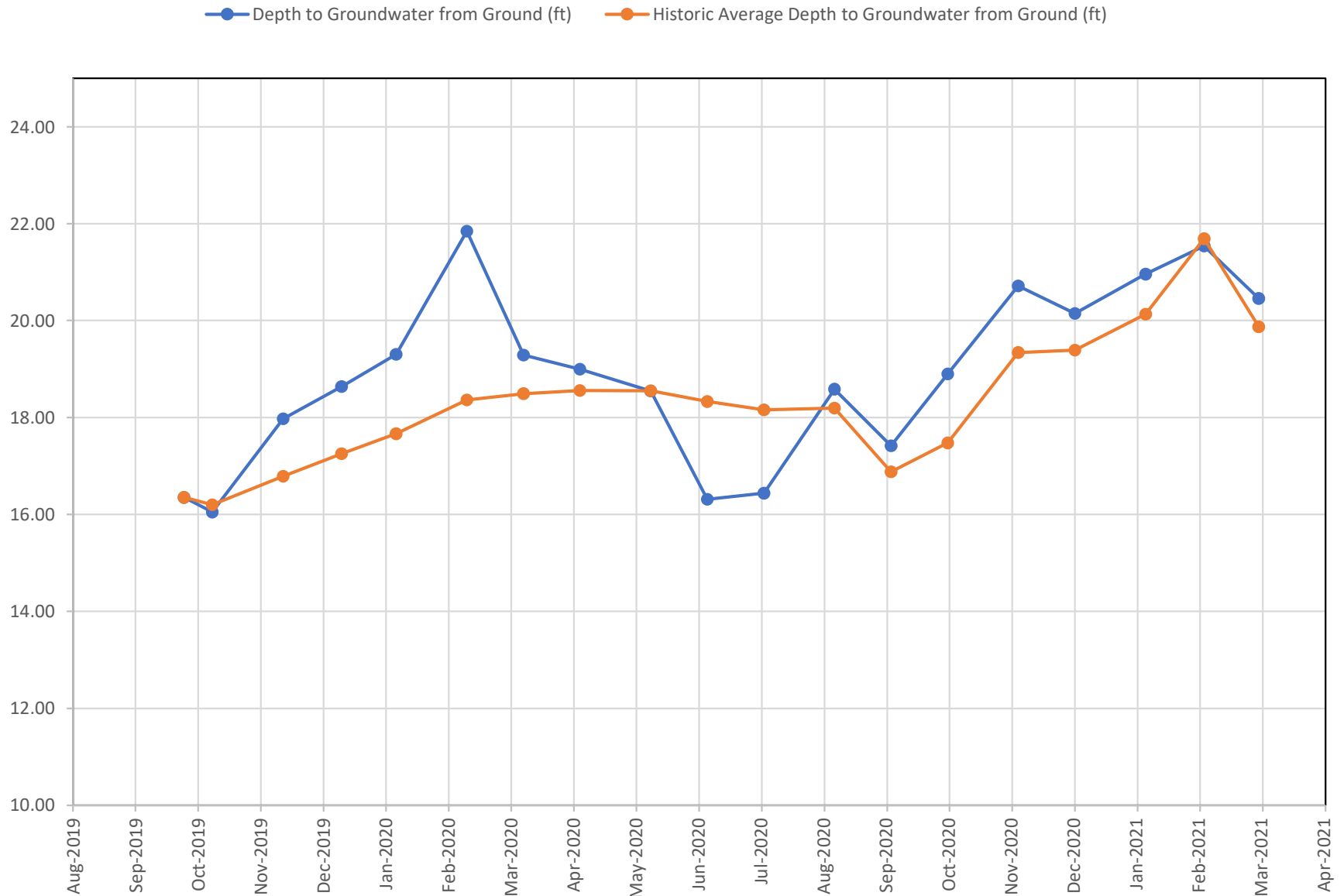
Idaho: 195 River Vista Place, #306, Twin Falls, ID 83301 | 208.595.5301

www.agpros.com

Derr Pit Off-Site Well Readings

| Well Designation | | Taylor Dom | | |
|--------------------|---|---------------------------------------|--|--|
| Date | Field Reading Depth to Groundwater (ft) | Depth to Groundwater from Ground (ft) | Historic Average Depth to Groundwater from Ground (ft) | Trigger Level of 2 feet below Historic Average Level Met (Yes or No) Start in May 2020 |
| September 26, 2019 | 17.33 | 16.35 | 16.35 | |
| October 10, 2019 | 17.03 | 16.05 | 16.20 | |
| November 14, 2019 | 18.95 | 17.97 | 16.79 | |
| December 13, 2019 | 19.45 | 18.64 | 17.25 | |
| January 9, 2020 | 20.12 | 19.31 | 17.66 | |
| February 13, 2020 | 22.66 | 21.85 | 18.36 | |
| March 12, 2020 | 20.10 | 19.29 | 18.49 | |
| April 9, 2020 | 19.81 | 19.00 | 18.56 | |
| May 14, 2020 | 19.36 | 18.55 | 18.56 | No |
| June 11, 2020 | 17.13 | 16.32 | 18.33 | No |
| July 9, 2020 | 17.25 | 16.44 | 18.16 | No |
| August 13, 2020 | 19.40 | 18.59 | 18.19 | No |
| September 10, 2020 | 18.23 | 17.42 | 16.88 | No |
| October 8, 2020 | 19.71 | 18.90 | 17.47 | No |
| November 12, 2020 | 21.53 | 20.72 | 19.34 | No |
| December 10, 2020 | 20.96 | 20.15 | 19.39 | No |
| January 14, 2021 | 21.77 | 20.96 | 20.13 | No |
| February 12, 2021 | 22.35 | 21.54 | 21.69 | No |
| March 11, 2021 | 21.27 | 20.46 | 19.87 | No |
| | | | | |
| | | | | |

TAYLOR DOM



Notes:

- 1) Graph displays Depth to Groundwater (lower depth to groundwater reading means higher water table elevation).
- 2) Trigger point is described in Settlement Agreement.
- 3) Since Historical Data was not established until September 2020, a year-to-date running average was used to compute historical average, As of September 2020, the historical average is computed as described in Settlement Agreement.