

AN APPLICATION FOR A PERMIT TO CONDUCT COAL SURFACE MINING AND RECLAMATION ACTIVITIES AT THE TRAPPER MINE IN MOFFAT COUNTY, COLORADO

**SUBMITTED BY
TRAPPER MINING INC.
C-1981-010**

Submitted:	January 1981
Renewal:	February 1987
Renewal:	February 1993
Renewal:	January 1998
Renewal:	January 2003
Renewal:	July 2008
Renewal:	July 2013
Renewal:	November 2017

CONTENTS:

Appendix W 2020 Annual Report

VOLUME L



Colorado Division of Reclamation, Mining and Safety

Annual Reclamation Report for Calendar Year – 2020

Trapper Mine	C-1981-010	Trapper Mining Inc.
Mine Name	Permit Number	Permittee
PO Box 187, Craig, CO 81626		
Address		

This report, required by Rule 2.04.13, is due by February 15 of each year, or other date, as agreed upon by the Division. It should include text, discussion, and maps, at a minimum, in addition to any other reclamation monitoring data as required by the approved permit. The location of the acreage reported under each land status category and year of seeding (if applicable) should be clearly identified on a map included with the report.

Land Category	Last Year's Cumulative Total (from last year's ARR)	This Calendar Year			Cumulative Total
		Acres Added (+)	Acres Subtracted (-)		
Acreage in Active Mining Areas ¹	1,224.2	112.2	19.3	=	1,317.1

Land Category	Last Year's Cumulative Total (from last year's ARR)	This Calendar Year			Cumulative Total
		Acres Added (+)	Acres Subtracted (-)		
Acres Disturbed ²	6,752.9	271.5	178.7	=	6,845.7
Acres Backfilled and Graded	4,917.6	19.3	182.9	=	4,754.2
Acres Topsoiled	4,917.6	19.3	182.9	=	4,754.2

Acreage in Long-term Facilities ³	Last Year's Cumulative Total (from last year's ARR)	This Calendar Year			Cumulative Total
		Acres Added (+)	Acres Subtracted (-)		
Non-Permanent Facilities	519.9	159.3		=	679.2
Permanent Facilities (permitted)	99.4			=	99.4
Totals	619.3			=	778.6

Acres Seeded (permanent)	Last Year's Cumulative Total (from last year's ARR)	This Calendar Year			Cumulative Total
		Acres Added (+)	Acres Subtracted (-)		
9 Years and Less	1,003.6	19.3	154.4	=	868.4
10 Years and Greater	3,905.8	162.1	182.9	=	3,885.8
Totals	4,909.4			=	4,754.2

Bond Release	Last Year's Cumulative Total (from last year's ARR)	This Calendar Year			Cumulative Total
		Acres Added (+)	Acres Subtracted (-)		
Phase I Released	4,470.4	298.3	182.9	=	4,585.8
Phase II Released	4,299.0	175.0	182.9	=	4,291.1
Phase III Released	3,613.8	162.1	178.7	=	3,597.2

¹Includes pits, topsoil stripped areas in advance of pits, and spoil not backfilled and graded

²Surface Mine Acres Disturbed = B&G + Long-Term Facilities + Active Mining Areas; Underground Mine Acres Disturbed = B&G + Long-Term Facilities; Separately-permitted Loadouts = B&G + Long-Term Facilities

³Includes haul, access and light-use roads, temporary dams and impoundments; permanent dams and impoundments; diversion and collector ditches, water and air monitoring sites; topsoil stockpiles; overburden stockpiles; repair, storage and construction areas; office area, repair shops, and parking; coal stockpiles, loading, and processing areas; railroads; coal conveyors; refuse piles and coal mine waste impoundments; head-of-hollow fills; valley fills; ventilation shafts and entryways; and non-coal waste disposal area (garbage dumps and coal combustion by-products disposal areas).

Annual Reclamation Report Instructions

The Annual Reclamation Report (ARR) form has been designed to aid in the tracking of disturbed acres as they progress through the reclamation process. The rows are arranged so that the initial disturbed acres are entered at the top of the page and the acres will progress down through the rows to final bond release at the bottom.

Note: The “Last Year’s Cumulative Total” columns need to have the values entered from the previous year’s ARR “Cumulative Total” columns. This ensures accuracy from year to year.

Land Category –

Acreage in Active Mining Areas – This section applies only to surface mines. It does not apply to underground mines nor to separately-permitted loadouts. Footnote 1 on the ARR form describes Active Mining Areas as pits, topsoil stripped areas in advance of pits and spoil not backfilled and graded.

Land Category –

Acres Disturbed – This is the total number of acres that have been disturbed by surface coal mining and reclamation operations for this permit number, regardless of name changes, bond releases and changes to the permit boundary. The subtraction column is for tracking acres transferred to another permit or corrections associated with record keeping and mapping. Do not subtract acres where Phase III bond release was achieved. A formula is shown in footnote 2 on the ARR form for surface and underground mines that explains how this value is determined.

Acres Backfilled and Graded – This is the total number of acres that have been backfilled and graded to the approved post-mining topography. The subtraction column is for tracking acres transferred to another permit, acres re-disturbed or corrections associated with record keeping and mapping. Do not subtract acres where Phase III bond release was achieved.

Acres Topsoiled – This is the total number of acres that have been topsoiled in advance of seeding with approved permanent seedmixes. Do not enter acres for topsoiled out slopes of pond embankments, topsoiled out slopes of road embankments, or topsoiled out slopes of cut-and-fill facility pads. The subtraction column is for tracking acres transferred to another permit, acres re-disturbed or corrections associated with record keeping and mapping. Do not subtract acres where Phase III bond release was achieved.

Acreage in Long-term Facilities –

Non-Permanent Facilities – This is the total number of acres that have a facility listed in Footnote 3 at the bottom of the ARR form that has not been approved in the permit to remain as permanent.

Permanent Features – This is the total number of acres that have a facility listed in Footnote 3 at the bottom of the ARR form that has been approved in the permit to remain as permanent. If the feature is intended to be permanent but has not been approved as permanent through a permitting action (TR, PR, etc.), then it is not considered permanent.

Acres Seeded –

The acres seeded rows are for permanently seeded acres. Do not enter temporary seeding of topsoil piles, cover crops, embankment stabilization, etc.

Acres that were seeded during the current reporting year are entered in the “9 Years and Less” row.

When a parcel becomes seeded for 10 years or greater, subtract the acres from the “9 Years and Less” row and add it to the “10 Years or Greater” row.

The subtraction column in the “10 Years or Greater” row is for tracking acres transferred to another permit, acres re-disturbed or corrections associated with record keeping and mapping. Do not subtract acres where Phase III bond release was achieved.

Bond Release –

This is the total number of acres that have achieved Phase I, II or III bond release for this permit number, regardless of name changes and changes to the permit boundary.

Acres are added to these categories after DRMS’ proposed decision becomes final (issuance).

The subtraction column is for tracking acres transferred to another permit, acres re-disturbed or corrections associated with record keeping and mapping. Do not subtract acres where Phase III bond release was achieved.

Objective – The “Cumulative Total” value in each of these rows will be the same as the value in “Acres Disturbed – Cumulative Total” when the mine achieves final bond release.

SECTION 1.0

ANNUAL RECLAMATION REPORT



C-1981-010

SECTION 1.0 2020 Annual Reclamation Report

As specified by the revisions (1/3/90) to 2CCR 407-2, 2.04.13, Trapper Mine is submitting an Annual Reclamation Report for the previous calendar year (2020).

Historically, section 3.5.3 of Trapper's mining and reclamation permit required a reclamation map be submitted to the CDRMS annually by March 15. Subsequent to 1988 the map entitled the "Postmine Contour Map" was changed to "Reclamation Map." The reclamation maps developed from aerial photographs taken during the previous fall shows pit advancements, recontoured spoil areas and a historical account of the previously regraded areas for the year.

The 2020 reclamation map is a composite of the aerial photographs taken by drone during 2020, and shows the reclamation performed during 2020 for all areas under bond. Map(s) 1 show the aerial extent and location of disturbed acres, graded acres, topsoiled acres and perennial seeded acres during 2020. It also shows the location, aerial extent and reclamation year of all previously revegetated areas, as well as the actual and projected mature shrub clump establishment areas, topsoil stripping areas and laydown areas for 2020.

1.1 Permittee Identification

The Permittee for this annual reclamation report is:

Trapper Mining Inc.
P.O. Box 187
Craig CO 81626
Permit No. C-1981-010

1.2 Results

Table 1.1 and Map(s) 1 show the 2020 reclamation results. The various reclamation stages are addressed below in separate subsections.

1.2.1 Disturbed Acres

In 2020, Trapper disturbed 271.5 acres in the I Pit, L Pit and N Pit areas. Disturbance consisted mostly of redisturbance of Phase III Bond released lands in the former A Pit area and the I Pit area in the West Panel. Table 1.2 documents acres re-disturbed and the bond release status of each.

1.2.2 Backfilled and Graded Acres

Trapper backfilled and graded approximately 19.3 acres in 2020 to final contour (AOC). These acres were in the L Pit area.

1.2.3 Topsoiled Acres

Trapper re-topsoiled approximately 19.3 acres in 2020 to final contour (AOC). These acres were in the L Pit area.

1.2.4 Seeded Acres

Trapper seeded a permanent vegetation mixture on approximately 19.3 acres in 2020 to final contour (AOC). These acres were in the L Pit area.

1.2.5 Cultural Practices

In addition to 2020 replaced topsoil revegetation practices, Trapper also conducted several other cultural practices. These practices are addressed below.

Drainage Reconstruction

Refer to Section 3.0 of this annual report.

Contour Ditch Construction

During 2020, Trapper did not construct any contour ditches.

Stock Tank Construction

No new Stock Tanks were constructed during the 2020 field season. Refer to Section 6.

Stock Tank Reclamation

No Stock Tanks were reclaimed during the 2020 field season. Refer to Section 6.

Developmental Drill Sites

During the 2020 Developmental Drilling season 45 holes were drilled within the permit boundary in the I, J, N and L pit areas. All applicable developmental drill holes were abandoned per permit section 3.3.2 and will be reclaimed and seeded per section 3.6.3.5 of the permit. Drill hole abandonment typically uses Alternative 2 for sealing of the borehole.

Topsoil Piles

During 2020, Trapper moved pile A92-2 to the new piles constructed near the ash dump road. Trapper moved A97-3 to pile A94-2 and A98-2 was moved to the various new piles constructed along the new LOM Road in the N-Pit area. Additional topsoil was also placed on pile 18-3. Trapper constructed 16 new topsoil piles in the I, J, L and N Pit areas during stripping and re-disturbance activities in the 2020 field season. Refer to Section 5.

Sediment Dams

No sediment ponds were cleaned or constructed in 2020.

1.2.6 Previously Revegetated Acres

The locations and acres for all previously revegetated areas, seeded to perennial species, are presented in Map(s) 1. To date, Trapper has revegetated approximately 4,754.2 acres, including 19.3 acres in 2020. Of the total revegetated acres, 3,597.2 reclaimed acres have received final phase III bond release. The phase III total includes 178.7 acres of re-disturbance in I and N-Pit during 2020.

Not shown on Map(s) 1 in this annual report are the areas seeded to temporary perennial mixes that will require final reclamation prior to the end of the project (life of mine).

1.2.7 Re-Disturbed Reclamation Acres

The parcel identification and acres re-disturbed due to mining activities for all previously revegetated areas will be documented here. Table 1.2 will show acres re-disturbed and summarize the bond release status of each parcel. N Pit development resulted in 178.2 acres of re-disturbance. I Pit development resulted in 4.7 acres of re-disturbance in 2020.

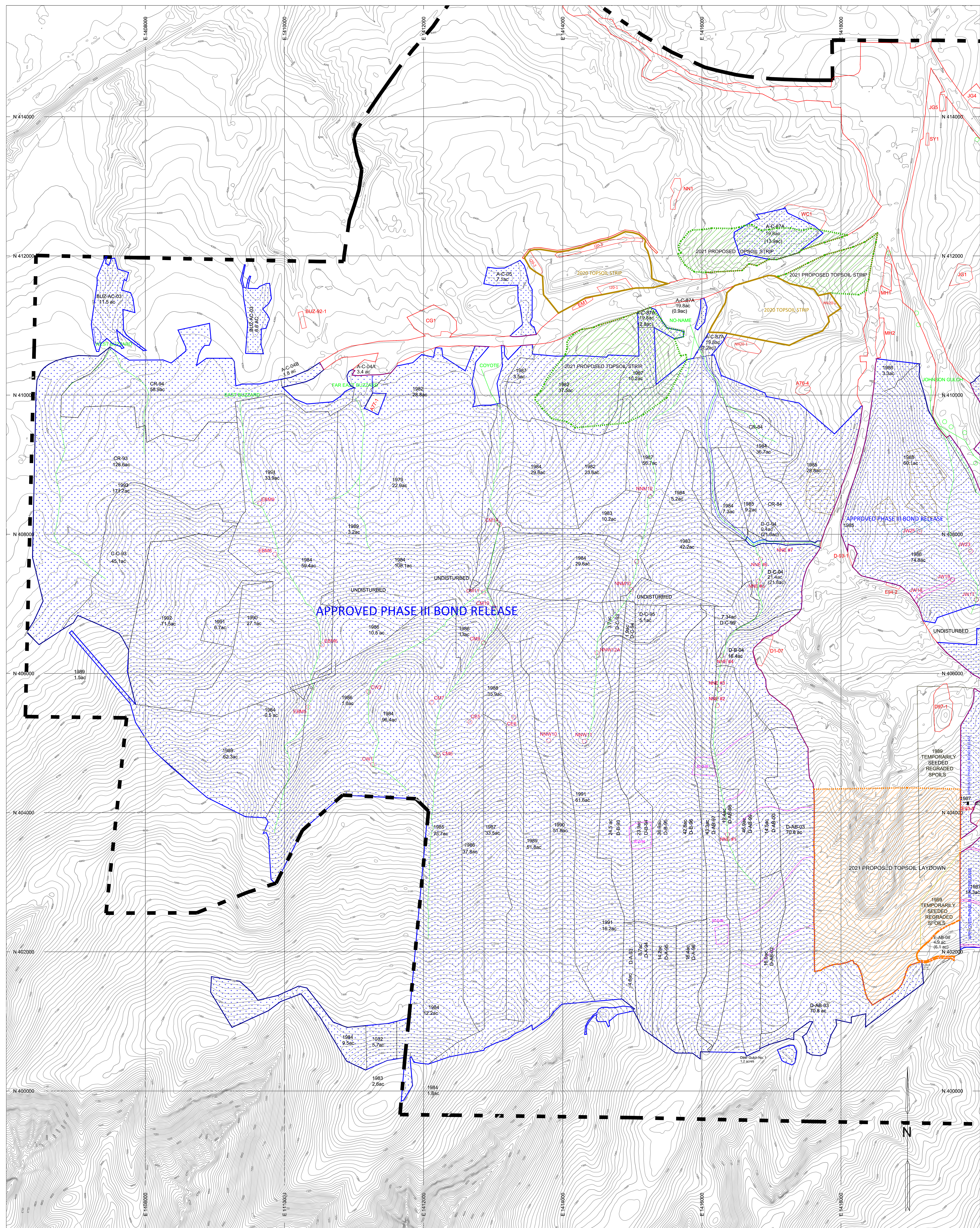
Table 1.1. Reclamation Summary for Trapper Mine (2020).


















	Ashmore Pit	Derringer Pit	L Pit	Z Pit	F Pit	N Pit	I Pit	J Pit	Non-pit Areas	Total
<u>New Disturbance Acres</u>										
Topsoil Strip Areas	8.4		26.8			175.9	29.5	29.7	1.2	271.5
Topsoil Pile Areas										
Total	8.4	0.0	26.8	0.0	0.0	175.9	29.5	29.7	1.2	271.5
<u>Backfilled and Graded Areas</u>										
Total	0.0	0.0	19.3	0.0	0.0	0.0	0.0	0.0	0.0	19.3
<u>Topsoil Replacement Areas</u>										
Total	0.0	0.0	19.3	0.0	0.0	0.0	0.0	0.0	0.0	19.3
<u>Vegetated (Seeded) Acres</u>										
Range Sites A&B	0.0	0.0	19.3	0.0	0.0	0.0	0.0	0.0	0.0	19.3
Range Site C										
Perennial Haycrop										
Temporary*	0.0	0.0	0.0	0.0	0.0	0.0	0.0	0.0	0.0	0.0
Total	0.0	0.0	19.3	0.0	0.0	0.0	0.0	0.0	0.0	19.3

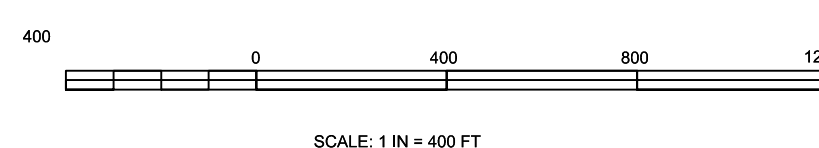
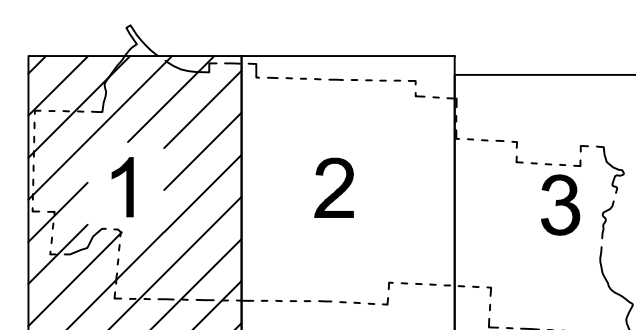
* Includes topsoil piles, diversion ditches, sediment ponds, drill pads, drainageways, and other temporarily reclaimed lands.
Disturbance to previously reclaimed parcels.

Table 1.2. Re-Disturbed Reclamation Summary for Trapper Mine (2020).

Parcel	Year	Re-Disturbed Acres	Bond Release Status			Yearly Total
			Phase I	Phase II	Phase III	
H-B-94	2001	8.5	8.5	8.5		8.5
A-C-86B	2007	1.6	1.6	1.6	1.6	
A-B-86	2007	4.3	4.3	4.3	4.3	
A-A-00	2007	4.7				
Z-AB-05	2007	2.6				13.2
A-B-98	2008	5.0	5.0			
A-B-00	2008	3.1	3.1	3.1		
A-B-98	2008	0.2	0.2			8.3
Z-AB-05	2009	0.3	0.3			
Z-AB-06	2009	0.1	0.1			
Z-A-07	2009	0.8	0.8			
Z-A-08	2009	0.5				1.7
Z-AB-05	2011	0.9	0.9			0.9
F-AB-04	2012	2.2	2.2	2.2		
F-AB-05	2012	0.6	0.6	0.6		
F-AB-06	2012	1.8	1.8	1.8		
F-AB-07	2012	5.1	5.1			
F-AB-08	2012	0.7	0.7			
F-AB-09	2012	0.4				
F-AB-11	2012	0.7				11.5
A-B-94	2014	0.7	0.7	0.7	0.7	0.7
A-C-95	2019	0.4	0.4	0.4	0.3	
A-B-95	2019	4.0	4.0	4.0	3.9	
A-B-96	2019	13.7	13.7	13.7	13.7	
A-B-97	2019	12.6	12.6	12.6	12.6	
A-B-98	2019	17.0	17.0	17.0	17.0	
A-B-99	2019	26.7	26.7	26.7	26.7	
A-B-00	2019	2.8	2.8	2.8	2.8	77.2
A-C-87A	2020	4.7	4.7	4.7	4.7	
A-B-94	2020	74.0	74.0	74.0	74.0	
A-C-94	2020	2.8	2.8	2.8	2.6	
A-C-95	2020	17.3	17.3	17.3	14.9	
A-B-95	2020	25.3	25.3	25.3	25.1	
A-B-96	2020	5.0	5.0	5.0	5.0	
A-B-97	2020	5.2	5.2	5.2	5.2	
A-B-98	2020	8.2	8.2	8.2	8.2	
A-B-99	2020	16.1	16.1	16.1	16.1	
A-B-00	2020	14.3	14.3	14.3	14.3	
A-B-09	2020	1.4	1.4	1.4		
F-AB-05	2020	0.3	0.3	0.3	0.3	
H-B-98	2020	2.2	2.2	2.2	2.2	
H-C-04	2020	6.1	6.1	6.1	6.1	182.9
		304.9	296.0	282.9	262.3	Total



LEGEND	
-----	PERMIT BOUNDARY
	HISTORICAL REVEGETATED AREA
	SHRUB CLUMP/PI ID/Year Constructed
	2020 FINAL REGRADE AREA
	2020 RETOPOILED AND REVEGETATED AREA
	EXISTING TOPSOIL STOCKPILE
	PROPOSED TOPSOIL STOCKPILE
	ASH DUMP STORAGE AREA
	2020 TOPSOIL STRIP
	2021 PROPOSED TOPSOIL LAYDOWN
	2021 PROPOSED TOPSOIL STRIP
	APPROVED PHASE III BOND RELEASED BOUNDARY
	ACCESS CORRIDORS
	EXISTING STOCK POND
	EXISTING DOZER BASINS
	RECONSTRUCTED DRAINAGES
	2020 RECONSTRUCTED DRAINAGES
	CONTOUR DITCH




Topographic information compiled from aerial photography dated 12/2000.
AutoCAD file: L:\BDN\Rec Map\2000_Topo_With Labels.dwg

TRAPPER MINING INC.

TRAPPER MINE	CRAIG, CO
--------------	-----------

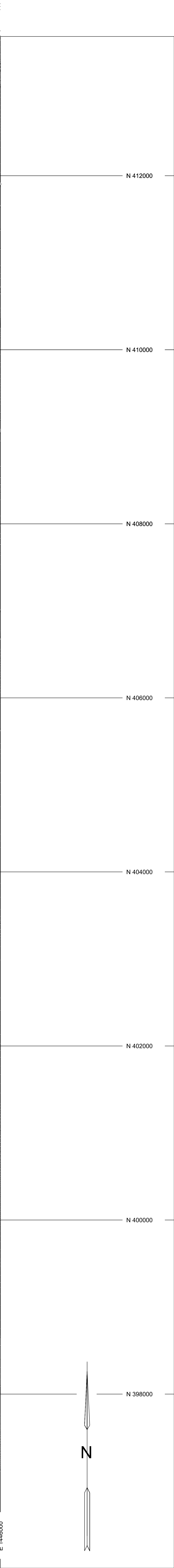
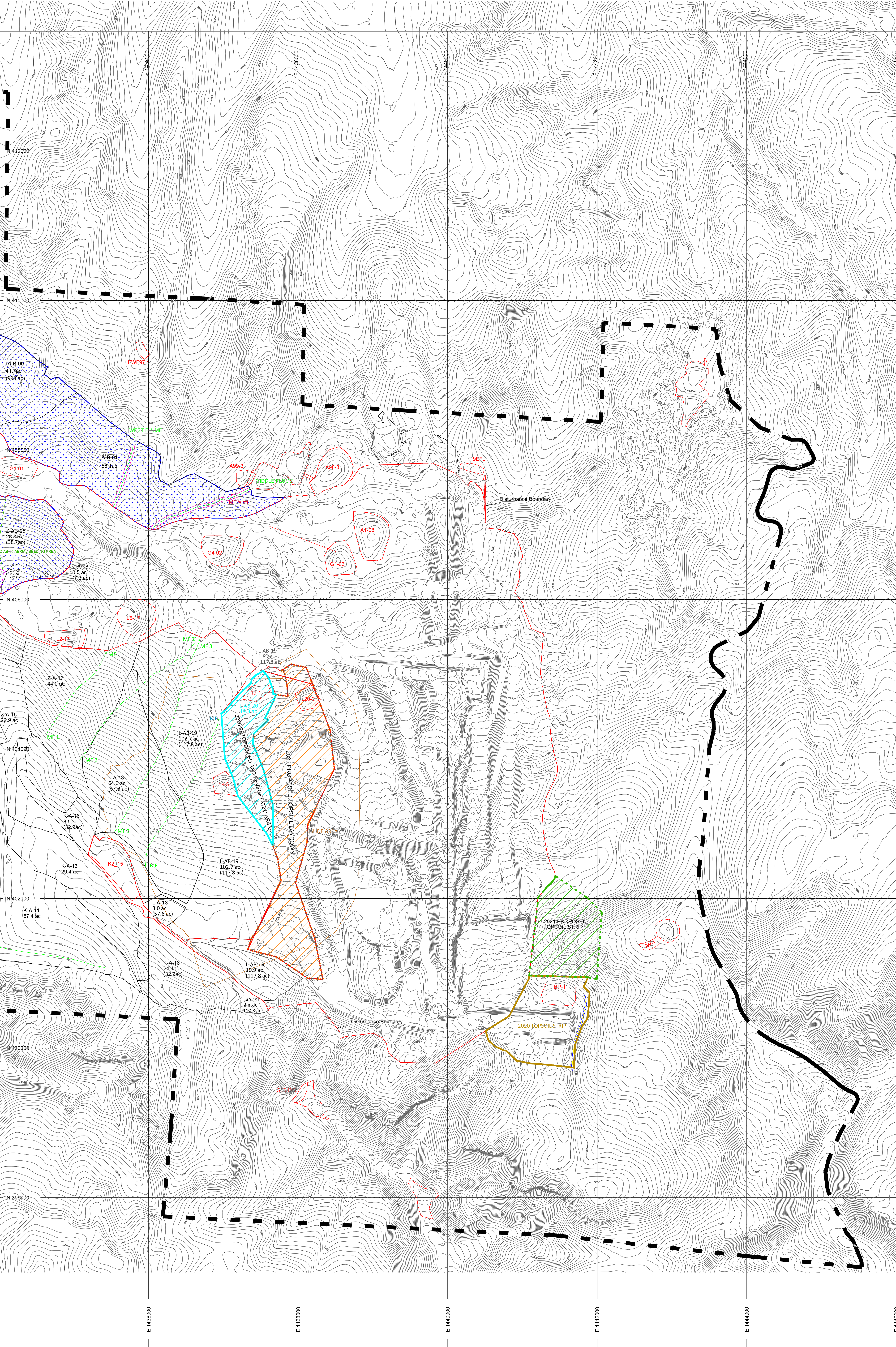
PERMIT C81-010
2020 ANNUAL RECLAMATION
REPORT MAP

SCALE: 1in = 400 ft DESIGNED BY: BDN DRAWN BY: JMM DATE: 2/22/2021	Sheet 1 of 3 <h1>MAP 1</h1> SHEET 1	
---	---	---

Sheet 1 of 3

MAP 1





PERMIT BOUNDARY

HISTORICAL REVEGETATED AREA

SHRUB CLUMP/PIT ID/Year Constructed

2020 FINAL REGRADE AREA

2020 RETOPSOILED AND REVEGETATED AREA

EXISTING TOPSOIL STOCKPILE

PROPOSED TOPSOIL STOCKPILE

2020 TOPSOIL STRIP

2020 PROPOSED TOPSOIL LAYDOWN

2021 PROPOSED TOPSOIL STRIP

APPROVED PHASE III BOND RELEASED BOUNDARY

ACCESS CORRIDORS

EXISTING STOCK POND

EXISTING DOZER BASINS

RECONSTRUCTED DRAINAGES

2020 RECONSTRUCTED DRAINAGES

CONTOUR DITCH

1

2

3

SHEET LOCATION INDEX

0 400 800 1200

SCALE: 1 IN = 400 FT

CONTOUR INTERVAL: 10 FEET

Topographic information compiled from aerial photography dated 12/2020.
Aerial photo by: SRTM/USGS/USDA, Inc. 2010-2015/USDA/USGS

TRAPPER MINING INC.

TRAPPER MINE

CRAIG, CO.

PERMIT C81-010

2020 ANNUAL RECLAMATION

REPORT MAP

SCALE: 1 in = 400 ft

DESIGNED BY: BDN

DRAWN BY: JAG

DATE: 2/22/2021

Sheet 3 of 3

MAP 1

SHEET 3

SECTION 2.0

RESERVED



C-1981-010

SECTION 2.0 Reserved

SECTION 3.0

DRAINAGEWAY RECONSTRUCTION, IMPROVEMENTS AND REPAIRS



C-1981-010

SECTION 3.0 2020 Drainage Reconstruction, Improvement and Repairs at Trapper Mine

3.1 Drainage Reconstruction 1987-2020

At Trapper Mine, all or portions of nine major drainageways (Coyote, Johnson, Buzzard, No-Name, Oak, Grouse, Horse, Flume and Pyeatt) and their tributaries have been regraded and appropriately treated to reduce the erosion rate and assist in permanent channel stabilization from 1987 through 2020. At the conclusion of the 2020 field season, approximately 141,870 linear feet (26.9 miles) of permanent drainage reconstruction has been completed at Trapper Mine (Map 1). In 2020 – No new drainage reconstruction occurred.

3.2 Drainage Improvements and Repairs

Improvements and repairs were performed to provide benefits to all drainages treated in 1987-2020 as well as portions of undisturbed and disturbed drainage segments. Drainage improvements include dozer basins constructed in newly stripped topsoil areas and on newly regraded spoils. Drainage repair and/or enhancement were completed on approximately 11,200 linear feet of drainage ways in Flume drainages during the 2020 field season.

3.3 Drainage Reconstruction Design Summary

Design criteria established with PR-07 shall be summarized for each year for the drainages reconstructed on the site. Table 3.1 shows the model inputs for each drainage designed and reconstructed for the reporting year. Map 1 indicates each drainage section reconstructed during the reporting year.

Table 3.1. Drainage Reconstruction Summary for Trapper Mine (2020)

(No Drainage Reconstruction in 2020)

Drainage Model Inputs

Drainage Designation (Map 1)

Total Acreage

Average Curve Number

Average Slope

Total Storage Needed, ac-ft.

Capacity of Check Dam(s), ac-ft.

Capacity of Dozer Basin(s), ac-ft.

Dozer Basins Constructed

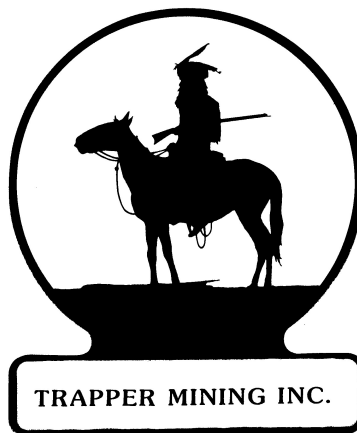
Check Dams Constructed

Required Number of Check Dams

Total Storage Completed, ac-ft.

SECTION 4.0

RESERVED



C-1981-010

SECTION 5.0

TOPSOIL STOCKPILE LOCATIONS



C-1981-010

SECTION 5.0 Topsoil Stockpile Locations

Trapper's approved permit (Section 4.9.2) specifies that CDRMS will be provided with map(s) illustrating the location of topsoil stockpiles constructed during the previous year and the approximate locations for stockpiles proposed for construction during the upcoming year (Map 1).

Table 5-1 lists all existing stockpiles with their identification nomenclature, coordinates (based on the approximate center of the pile), acres, construction date and volume; which is updated annually.

During 2020, Trapper moved pile A92-2 to the new piles constructed near the ash dump road. Trapper moved A97-3 to pile A94-2 and A98-2 was moved to the various new piles constructed along the new LOM Road in the N-Pit area. Additional topsoil was also placed on pile 18-3. Trapper constructed 16 new topsoil piles in the I, J, L and N Pit areas during stripping and re-disturbance activities in the 2020 field season.

At the end of 2020, excluding stockpiles abandoned with the approvals of MR-155 and TR-94, there are 75 existing topsoil stockpiles at Trapper affecting 170.2 acres and storing approximately 3,387,201 cubic yards of salvaged topsoil.

Presently there are no proposed approximate locations for new topsoil stockpiles in 2021. Trapper is planning to utilize existing topsoil stockpiles and live haul stripping for the 2021 reclamation season.

Table 5-1. Trapper Mine Topsoil Pile Inventory (1)

Topsoil Pile ID	Location	Coordinates		Size (acres)	Approximate CYDS	Year Created
		Northing	Easting			
18-2	Johnson Coal Pile	413,427	1,423,038	2.5	20,360	2018
18-3	Ash Dump	405,377	1,424,250	1.2	43,046	2018
19-1	K Ridge Reclamation	404,660	1,437,265	1.2	7,261	2019
19-5	K Ridge Reclamation	403,607	1,437,132	1.9	20,585	2019
A76-4	GB well site	410,070	1,417,400	0.5	7,805	pre 1976
A77-1	A field coal pile	409,850	1,411,300	1.3	10,620	1977
*A91-8	NW Edge of H Pit Reclamation	410,800	1,421,400	5.1	67,159	1991
*A92-1	North A Road East of East Pyeatt	411,900	1,427,900	12.5	336,429	1992
A92-3	North A Road East of West Pyeatt	412,100	1,424,400	0.6	7,632	1992
A92-4	North A Road Middle Pyeatt	411,300	1,425,600	7.2	171,972	1992
A92-5	North A Road West of East Pyeatt	412,670	1,426,360	7.8	194,000	1992
A93-1	A pit South #1	406,550	1,426,040	3.9	150,055	1993
A94-2	E of Grouse Drainage	412,000	1,429,300	4.4	120,606	1994
A96-2	North A Pit west of A 95-2	411,100	1,432,100	3.0	26,216	1996
A97-2	South of LOM Road	408,150	1,429,200	1.5	50,972	1997
A98-3	West Middle Flume Pond #3	407,500	1,438,240	5.3	204,024	1998
A99-3	East Middle Flume Pond	407,630	1,437,275	0.8	9,000	1999
A1-08	East of G1-03 Pile	406,870	1,439,000	5.6	183,982	2008
ASH1_2020	LOM/ASH Road	408,550	1,424,160	1.8	15,129	2020
ASH2_2020	LOM/ASH Road	407,300	1,423,850	3.6	60,000	2020
ASH3_Foster's Pile	LOM/ASH Road	409,850	1,424,000	2.3	38,684	2020
ASH4_2020	LOM/ASH Road	411,210	1,424,290	1.3	9,962	2020
ASH1	Johnson Gulch East Tributary	408,000	1,421,200	3.9	97,092	1992
ASH2	Johnson Gulch East Tributary	408,200	1,422,000	1.3	27,486	1992
BP201	Bird Pit 2	400,770	1,441,600	3.2	30,000	2020
BUZ92-1	Far East Buzzard Pond #1	411,100	1,410,250	0.4	882	1992
CG1	Coyote Gulch	411,050	1,412,200	4.8	11,910	1978
D93-1	North D pit #1	407,725	1,418,160	0.5	20,570	1993
D97-1	North end Enfield Pit	405,640	1,419,440	1.8	62,216	1997
D1-07	West Spoils Side of North End D-Pit	406,640	1,416,860	1.5	7,476	2007
E78-1	E pit SE pile small	402,490	1,422,730	0.7	10,000	1978
E78-2	Middle E pit pile	404,400	1,423,100	4.5	25,238	1978
E79-4	E pit SE pile large	401,900	1,422,650	2.8	34,010	pre 1979
E79-6	Castor Gulch road E pit pile	401,200	1,420,950	9.0	201,548	pre 1979
E87-12	E pit regrade pile	403,850	1,422,350	4.1	73,278	1987
E93-4	North E pit #4	408,750	1,421,050	0.9	14,030	1993
E93-5	Middle E pit #5	403,955	1,419,950	0.8	7,130	1993
E94-1	W of D East Road	404,280	1,420,370	0.3	2,304	1994
E94-2	N of D East Road	407,270	1,418,750	0.2	1,200	1994
EM1	South of I -Pit	411,330	1,414,300	0.4	5,456	1980
G1-01	North of LOM rd @ G Pit	407,740	1,434,270	4.0	101,948	2001
G1-03	East G-Pit	406,526	1,438,555	3.5	89,822	2003
G4-02	North A-E & LOM Roads Intersection	406,728	1,436,968	2.1	137,784	2002
G06-DG	Deal Gulch pond	399,380	1,438,040	0.6	10,104	2006/2018
H04	West Horse pond	401,580	1,430,260	0.7	6,244	2004
HRS	Horse Pond	403,090	1,432,930	1.0	24,781	2000
I20-1	South of I Pit	411,551	1,414,785	1.5	11,884	2020
I20-2	West end I-Pit	411,903	1,413,603	0.9	13,291	2020
I20-3	North Edge I-Pit	412,122	1,414,412	1.8	12,782	2020
JF-1	Jeffway Pond #1	401,578	1,442,426	0.7	1,760	2018
JG5	Johnson Gulch Elect Station	414,250	1,419,450	0.5	6,209	1989

Table 5-1. Cont. - page 2

Topsoil Pile ID	Location	Coordinates		Size (acres)	Approximate CYDS	Year Created
		Northing	Easting			
JG6	North A Haul Road Johnson	413,000	1,420,950	1.2	13,212	1987
JG7	North A Haul Road Ag Field W	412,400	1,422,250	0.5	16,850	1988
JG8	North A Haul Road Ag Field E	412,300	1,422,700	0.7	12,840	1988
K2-15	K Ridge Reclamation	402,400	1,435,600	7.1	120,195	2015
L2-17	East Readyline	405,490	1,434,900	2.4	46,485	2017
L20-2	K2 Road	404,650	1,438,139	2.0	32,400	2020
L5-17	Road to East Ready Line	405,800	1,435,830	4.5	91,745	2017
MH1	Main haul road north	411,710	1,418,660	1.0	27,334	1986
MH2	Main haul road south	410,800	1,418,550	1.2	35,216	1982
MP1	Middle Pyeatt Dam #1	412,200	1,425,030	0.6	4,200	1986
MP2	Middle Pyeatt Dam #2	413,000	1,425,220	1.2	12,500	1986
MP7	Middle Pyeatt Sediment Basin	411,000	1,425,400	0.2	645	1991
N20-2	New LOM Raod	408,760	1,431,933	1.3	10,835	2020
N20-3	New LOM Raod	411,300	1,426,940	1.6	19,770	2020
N20-4	New LOM Raod	410,135	1,431,900	0.8	8,659	2020
N20-5	New LOM Raod	410,790	1,431,300	1.8	5,620	2020
N20-6	New LOM Raod	411,340	1,430,530	1.1	9,970	2020
N20-7	NE of Ash Pond	410,334	1,426,014	0.4	1,713	2020
NN20-1	East No-Name #2	410,711	1,416,540	1.6	12,920	2020
NN20-2	East end I-Pit Overburden Pile	411,282	1,417,835	1.3	27,539	2020
SP5-94	SW of Sage Pond	412,600	1,430,555	0.6	6,318	1994
SP6-94	SE of Sage Pond	412,700	1,431,200	0.7	12,204	1994
SY1	Shop yard pullout expansion	413,660	1,419,250	0.2	900	1990
WC1	Wye coal pile site	412,600	1,417,500	2.6	53,197	1978
Total				170.2	3,387,201	

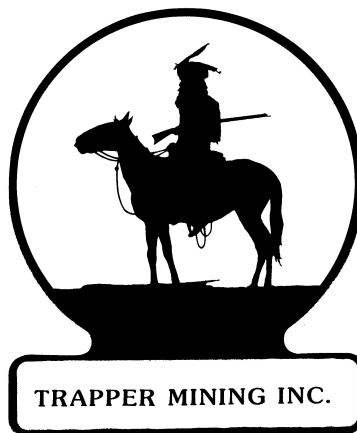
* In accordance with MR-155, all of piles A86-6 (depleted in 2004), A92-4 and A92-5 were abandoned and A91-8 and A92-1 were partially abandoned.

In accordance with TR-94, topsoil piles NN1, E89-11, JG-1, JG-2, JG-3, JG-4, WP-2, WP-3, EP-2, EP-3, EP-4, GP-1, A95-2, FWF97-1, A99-3 and EFL were abandoned.

(1) As of December 31, 2020

SECTION 6.0

LIVESTOCK PONDS



C-1981-010

SECTION 6.0 Stock Tank and Dozer Basin Construction Through 2020

6.1 Stock Tanks

This section updates the location of all constructed stock tanks through 2020 (Map 1). The average tank density for Trapper mined-land areas will not exceed one tank per ten acres. Existing stock tanks meet applicable certification standards.

In 2020 Trapper did not construct any new stock tanks.

6.2 Dozer Basins

As a result of the approval of technical revision TR-73 (January 1997), dozer basin locations will be provided in this Appendix W document on an annual basis (Map 1).

Dozer basins assist sediment impoundments in the containment of sediment, reducing the frequency of sediment impoundment cleaning. Dozer basins are typically constructed along haulroads, regraded spoils, and/or on short or long term disturbed sites.

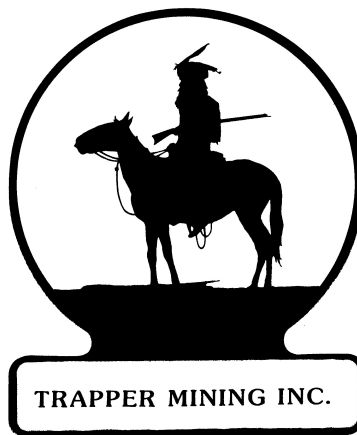
Table 6-1 Existing Stock Tank Density by Drainage Area (1) through 2020

Drainage Area	Tanks Constructed	Approximate Drainage Area (ac)	Approximate Drainage Acres Per Tank
Johnson	4	165	41
No Name	6	246	41
West Pyeatt	3	279	93
East Pyeatt	5	1,270	254
Oak	3	314	105
Middle Flume	<u>1</u>	<u>18</u>	<u>18</u>
	24	2,292	87

- (1) Based on average drainage area above first sediment control structure in any given drainage at Trapper Mine.

SECTION 7.0

MISCELLANEOUS



C-1981-010

SECTION 7.0 Miscellaneous

7.1 Vegetation Monitoring on Trapper Reclaimed Lands

Baseline vegetation monitoring occurred on 697.2 acres of reclaimed Trapper rangelands in Ashmore (A) pit, Flintlock (F) pit, Kimber (K) pit, East Flintlock (Z) pit and Lancaster (L) pit that had been initially topsoiled and seeded between 2012 and 2019 was accomplished during the 2020 field season. A total of 192 fifty-meter transects were monitored. Vegetation parameters sampled during 2020 included ground cover, species composition and woody stem density.

Vegetation monitoring planned for 2021 will include baseline sampling of new reclaimed areas. The second year of Phase III monitoring will be conducted on 265.4 acres in A, F, K and Z pits.

7.2 Grazing of Reclaimed Lands

No cattle grazing occurred on Trapper non final bond-released reclaimed lands during 2020, nor is any planned for 2021.

7.3 2020 Revegetation Seed Mixes

Section 3.6.3.5 of Trapper's Mining and Reclamation permit requires the Division be notified of the seed mixtures proposed to be used each year. Tables 7-1 through 7-4 give the 2021 proposed mixtures.

Required seed packing slips are attached behind Table 7-4 for shipments received in 2020.

7.4 Trapper Mine Facilities

In 2020, existing Trapper Mine facilities were not significantly changed during the reporting year.

7.5 Weed Control Measures

Weed control was performed on all areas of the mine-site. Herbicide was applied aerially as needed and selectively by ground crews. Efforts were primarily focused on newer reclaimed parcels and/or areas of historical concentrations. Areas surrounding facilities were treated by non-selective herbicides to obtain bare ground as needed. Reclaimed parcels were treated with recommended selective broadleaf herbicides for select noxious weeds. Noxious weeds are controlled in accordance with state and county lists and recommendations. Primary species of concern included Hoary cress (*Cardaria draba*), Dalmatian toadflax (*Linaria dalmatica*), Houndstongue (*Cynoglossum officinale*), Scotch thistle (*Onopordum acanthium*), Musk thistle (*Carduus nutans*), Canada thistle (*Cirsium arvense*) and Russian Knapweed (*Acroptilon repens*). Other possible species have included Black henbane (*Hyoscyamus niger*), Russian Olive (*Elaeagnus angustifolia*) and Tamarisk (*Tamarix spp.*).

Table 7-1. Seed mix for seeding Range Site AB in 2021, Trapper Mine.

SPECIES (1)	Pure Live Seed Per Square Foot	Pounds PLS Per Acre	Origin(1)
<u>Grasses:</u>			
Thickspike wheatgrass	0.5	0.14	N
Streambank wheatgrass	0.5	0.13	N
Western wheatgrass	0.5	0.19	N
Slender wheatgrass	0.5	0.14	N
Beardless bluebunch wheatgrass	2.0	0.62	N
Mountain brome	1.0	0.72	N
Great Basin wildrye	2.0	0.92	N
Kentucky bluegrass	3.0	0.06	*
Green needlegrass	1.0	0.24	N
Sheep Fescue	2.0	0.15	N
Redtop	2.0	0.02	I
Indian Ricegrass	1.0	0.23	N
Total grasses	16.0	3.56	--
<u>Forbs:</u>			
Munro Globemallow	1.0	0.08	N
Lewis Flax	2.0	0.30	N
Western yarrow	4.0	0.07	N
Cicer milkvetch	1.0	0.30	I
Arrowleaf balsamroot	0.5	0.40	N
Pacific aster	2.0	0.02	N
Rocky Mt. penstemon	2.0	0.14	N
Small burnet	0.5	0.40	I
Alfalfa	0.5	0.10	I
Showy Goldeneye	2.0	0.08	N
Total forbs	15.5	1.89	--
<u>Shrubs:</u>			
Rubber rabbitbrush	2.0	0.26	N
Silver sagebrush	2.0	0.10	N
Big sagebrush	3.0	0.07	N
Antelope bitterbrush	2.0	4.40	N
Mountain snowberry	1.0	0.58	N
Woods rose	1.0	0.96	N
Fourwing saltbrush	1.0	0.62	N
Chokecherry	0.3	3.00	N
Saskatoon serviceberry	0.3	0.29	N
Total shrubs	12.6	10.28	--
Total mixture	44.1	15.73	

(1) N - native, I - introduced, * - Naturalized.

Table 7-2. Seed mix for seeding Range Site C in 2021, Trapper Mine.

SPECIES	Pure Live Seed Per Square Foot	Pounds PLS Per Acre	Origin (1)
<u>Grasses:</u>			
Beardless bluebunch wheatgrass	1.0	0.31	N
Slender Wheatgrass	2.0	0.66	N
Thickspike wheatgrass	2.0	0.56	N
Streambank wheatgrass	2.0	0.51	I
Western wheatgrass	2.0	0.77	N
Great Basin wildrye	2.0	0.92	N
Sheep fescue	2.0	0.15	N
Kentucky bluegrass	4.0	0.08	*
Indian ricegrass	1.0	0.23	N
Mountain brome	2.0	1.43	N
Green needlegrass	2.0	0.48	N
Redtop	3.0	0.03	I
Total grasses	25.0	6.13	--
<u>Forbs:</u>			
Cicer Milkvetch	1.0	0.30	I
Western yarrow	4.0	0.04	N
Arrowleaf balsamroot	1.0	0.79	N
Lewis flax	4.0	0.61	N
Rocky Mt. penstemon	1.0	0.08	?
Small burnet	0.5	0.40	I
Pacific aster	2.0	0.03	N
Munro globemallow	0.5	0.04	N
Showy goldeneye	2.0	0.08	N
Total forbs	16.0	2.37	--
Total mixture	41.0	8.50	

(1) N - native, I - introduced, * - Naturalized, ? - Unknown, but genus occurs on the mine site.

Table 7-3. Seed mix for seeding temporary disturbance areas in 2021, Trapper Mine.

SPECIES	Pure Live Seed Per Square Foot	Pounds PLS Per Acre	Origin (1)
<u>Grasses:</u>			
Thickspike wheatgrass	3.0	0.84	N
Slender wheatgrass	4.0	1.10	N
Western wheatgrass	2.0	0.51	N
Great Basin wildrye	1.0	0.46	N
Kentucky bluegrass	6.0	0.12	*
Redtop	4.0	0.04	I
Total grasses	20.0	3.07	--
<u>Forbs:</u>			
Western yarrow	2.0	0.02	N
Alfalfa	2.0	0.42	I
Cicer milkvetch	2.0	0.64	I
Total forbs	6.0	1.08	--
Total mixture	26.0	4.15	

(1) N - native, I - introduced, * - Naturalized.

Table 7-4. Seed mix for aerial interseeding in 2021, Trapper Mine.

SPECIES (1)	Pure Live Seed Per Square Foot	Pounds PLS Per Acre	Origin(1)
<u>Forbs:</u>			
Lewis Flax	2.0	0.30	N
Western yarrow	5.7	0.10	N
Rocky Mt. penstemon	2.9	0.20	N
Total forbs	10.6	0.60	--
<u>Shrubs:</u>			
Rubber rabbitbrush	1.5	0.20	N
Silver sagebrush	4.0	0.20	N
Big sagebrush	8.6	0.20	N
Total shrubs	14.1	0.60	--
Total mixture	24.7	1.20	

(1) N - native



INTERMOUNTAIN SEED, INC.

P.O. Box 2, Ephraim, UT 84627
Phone: (435) 283-6639, Fax: (435) 283-4155
E-mail: sales@siseed.com

RECEIVED
JUL 17 2020
INVOICE

Invoice No.	7725
Date	10/6/2020
Ship Date	10/6/2020
FOB	
Terms	2% 10 Net 30
Due Date	11/5/2020

Bill To			Ship To		
Trapper Mining, Inc. P.O. Box 187 Craig, CO 81625			Trapper Mining, Inc. 25910 South Highway 13 Craig, CO 81625		
Customer Order No.	Ordered By	Account No.	Sales Rep	Ship Via	Customer Phone No.
P08441	Penny		Jason	Old Dominion	
Quantity	Bulk/PLS	Lot Number	Description (Species, Variety, Etc.)	Unit Price	Amount
		M-4659	Range Site A/B Grass Box Mix		0.00
28.8	PLS	1820-1	Mountain Brome - Bromar	4.75	136.80
9.6	PLS	19-2-51	Green Needlegrass - Lodorm	6.50	62.40
9.6	PLS	442-211-721A	Big Bluegrass - Sherman	6.75	64.80
24.8	PLS	450-101-676A	Bluebunch Wheatgrass - Whitmar	8.50	210.80
16	PLS	7W1805-58R	Small Burnet - Delar	1.90	30.40
7.6	PLS	9HW591-38	Western Wheatgrass - Arriba	6.75	51.30
16	PLS	BASA220	Arrowleaf Balsamroot - Native	28.50	456.00
5.6	PLS	BG3391-16	Slender Wheatgrass - San Luis	2.90	16.24
5.6	PLS	BTS-807	Thickspike Wheatgrass - Critana	6.50	36.40
5.2	PLS	BTS-992	Streambank Wheatgrass - Sodar	6.25	32.50
23.2	PLS	SIS5449	Mountain Snowberry - Native	44.00	1,020.80
11.6	PLS	SIS5468	Saskatoon Serviceberry	47.00	545.20
24.8	PLS	SIS5499-1	Fourwing Saltbrush	12.00	297.60
3.2	PLS	SIS5551	Munro Globemallow	74.00	236.80
176	PLS	SIS5558	Antelope Bitterbrush	22.50	3,960.00
36.8	PLS	W62-096-2890C	Great Basin Wildrye - Trailhead	8.75	322.00
		M-4660	Range Site A/B Alfalfa Box Mix		0.00
0.8	PLS	1861-08-01	Red Top	3.60	2.88
5.6	PLS	2019.0480	Rocky Mountain Penstemon	29.50	165.20
4	PLS	442-7-456188	Alfalfa - Ladak	2.75	11.00
4	PLS	702	Silver Sagebrush	55.00	220.00
6	PLS	8JE444-50	Sheep Fescue - Paradise	3.75	22.50
2.4	PLS	J6-9-AT405	Kentucky Bluegrass - Ginger	1.75	4.20
9.2	PLS	H4-19-92582	Indian Ricegrass - Rimrock	14.00	128.80
2.8	PLS	J16-18VR36EM	Western Yarrow - Eagle	27.50	77.00
Continued on next page.					

Please pay from this invoice. No statement will be sent.

Received By:

Date:

Subtotal

Sales Tax (6.65%)

Balance Due

THANK YOU. We appreciate your business!

Notice to Buyer: Stevenson Intermountain Seed guarantees its seed sold is as described on the label, within recognized tolerances, but express or imply no further guarantee. Our liability is limited in the amount to the purchase price. Any claims against seed purchases must be made in writing within 10 days after the receipt of shipment. Interest is charged at 1.5% per month (18% A.P.R.) on all accounts past due.



INTERMOUNTAIN SEED, INC.

P.O. Box 2, Ephraim, UT 84627

Phone: (435) 283-6639, Fax: (435) 283-4155

E-mail: sales@siseed.com

INVOICE

Invoice No.	7725
Date	10/6/2020
Ship Date	10/6/2020
FOB	
Terms	2% 10 Net 30
Due Date	11/5/2020

Bill To	Ship To
Trapper Mining, Inc. P.O. Box 187 Craig, CO 81625	Trapper Mining, Inc. 25910 South Highway 13 Craig, CO 81625

Customer Order No.	Ordered By	Account No.	Sales Rep	Ship Via	Customer Phone No.
P08441	Penny		Jason	Old Dominion	

Quantity	Bulk/PLS	Lot Number	Description (Species, Variety, Etc.)	Unit Price	Amount
12	PLS	NBS-RR19-APP-2	Blue Flax - Appar	19.75	237.00
38.4	PLS	SIS5070	Woods Rose - Native	21.00	806.40
0.8	PLS	SIS5338	Pacific Aster	90.00	72.00
10.4	PLS	SIS5419	Whitestem Rubber Rabbitbrush	39.00	405.60
3.2	PLS	SIS5480	Showy Goldeneye	54.00	172.80
2.8	PLS	SIS5524	Mountain Big Sagebrush	44.00	123.20
12	PLS	W73-488-5096C	Cicer Milkvetch - Monarch	3.75	45.00
		M-4661	Temporary Disturbance Mix		0.00
7.2	PLS	J6-9-AT405	Kentucky Bluegrass - Ginger	1.75	12.60
66	PLS	BG3391-16	Slender Wheatgrass - San Luis	2.90	191.40
50.4	PLS	BTS-807	Thickspike Wheatgrass - Critana	6.50	327.60
120	PLS	13023	Black Chokecherry - Native Kept Separate	18.50	2,220.00

ENTERED OCT 12 2020

2% Disc — 254.50

Please pay from this invoice. No statement will be sent.	Subtotal	\$12,725.22
	Sales Tax (6.65%)	\$0.00
	Balance Due	\$12,725.22

Received By: _____ Date: _____

THANK YOU. We appreciate your business!

net 12,470.72

Notice to Buyer: Stevenson Intermountain Seed guarantees its seed sold is as described on the label, within recognized tolerances, but express or imply no further guarantee. Our liability is limited in the amount to the purchase price. Any claims against seed purchases must be made in writing within 10 days after the receipt of shipment. Interest is charged at 1.5% per month (18% A.P.R.) on all accounts past due.

650



INTERMOUNTAIN SEED, INC.

P.O. Box 2, Ephraim, UT 84627

Phone: (435) 283-6639, Fax: (435) 283-4155

E-mail: sales@siseed.com

INVOICE

Invoice No.	7577
Date	2/27/2020
Ship Date	2/26/2020
FOB	
Terms	2% 10 Net 30
Due Date	3/28/2020

Bill To
Trapper Mining, Inc. P.O. Box 187 Craig, CO 81625

Ship To
Trapper Mining, Inc. 25910 South Highway 13 Craig, CO 81625

Customer Order No.	Ordered By	Account No.	Sales Rep	Ship Via	Customer Phone No.
PO5722	Billy		Jason	Best Way	970-826-6172

Quantity	Bulk/PLS	Lot Number	Description (Species, Variety, Etc.)	Unit Price	Amount
1	Mix	M-5605	2020 Aerial Seed Mix		
27	PLS	J16-18VR36EM	Western Yarrow - Eagle (30.71 Bulk)	26.00	702.00
81	PLS	NBS-NB19-APP-1	Lewis Blue Flax - Appar (92.30 Bulk)	8.75	708.75
54	PLS	2019.0480	Rocky Mountain Penstemon - Bandera (78.59 Bulk)	34.00	1,836.00
54	PLS	702	Silver Sagebrush (302.28 Bulk)	58.00	3,132.00
54	PLS	SIS5508	Mountain Big Sagebrush (266.19 Bulk)	42.00	2,268.00
54	PLS	SIS5419	Whitestem Rubber Rabbitbrush (172.95 Bulk)	36.00	1,944.00
540	Bulk	Rice Hulls	Rice Hulls	0.35	189.00
*50 lbs additional Rice Hulls added to mix					

ENTERED MAR 03 2020

Please pay from this Invoice. No statement will be sent.		Subtotal	\$10,779.75
		Sales Tax (6.65%)	\$0.00
Received By:	Date:	Balance Due	\$10,779.75
THANK YOU. We appreciate your business!			

Notice to Buyer: Stevenson Intermountain Seed guarantees its seed sold is as described on the label, within recognized tolerances, but express or imply no further guarantee. Our liability is limited in the amount to the purchase price. Any claims against seed purchases must be made in writing within 10 days after the receipt of shipment. Interest is charged at 1.5% per month (18% A.P.R) on all accounts past due.

150