

DENVER WATER  
DENVER, COLORADO

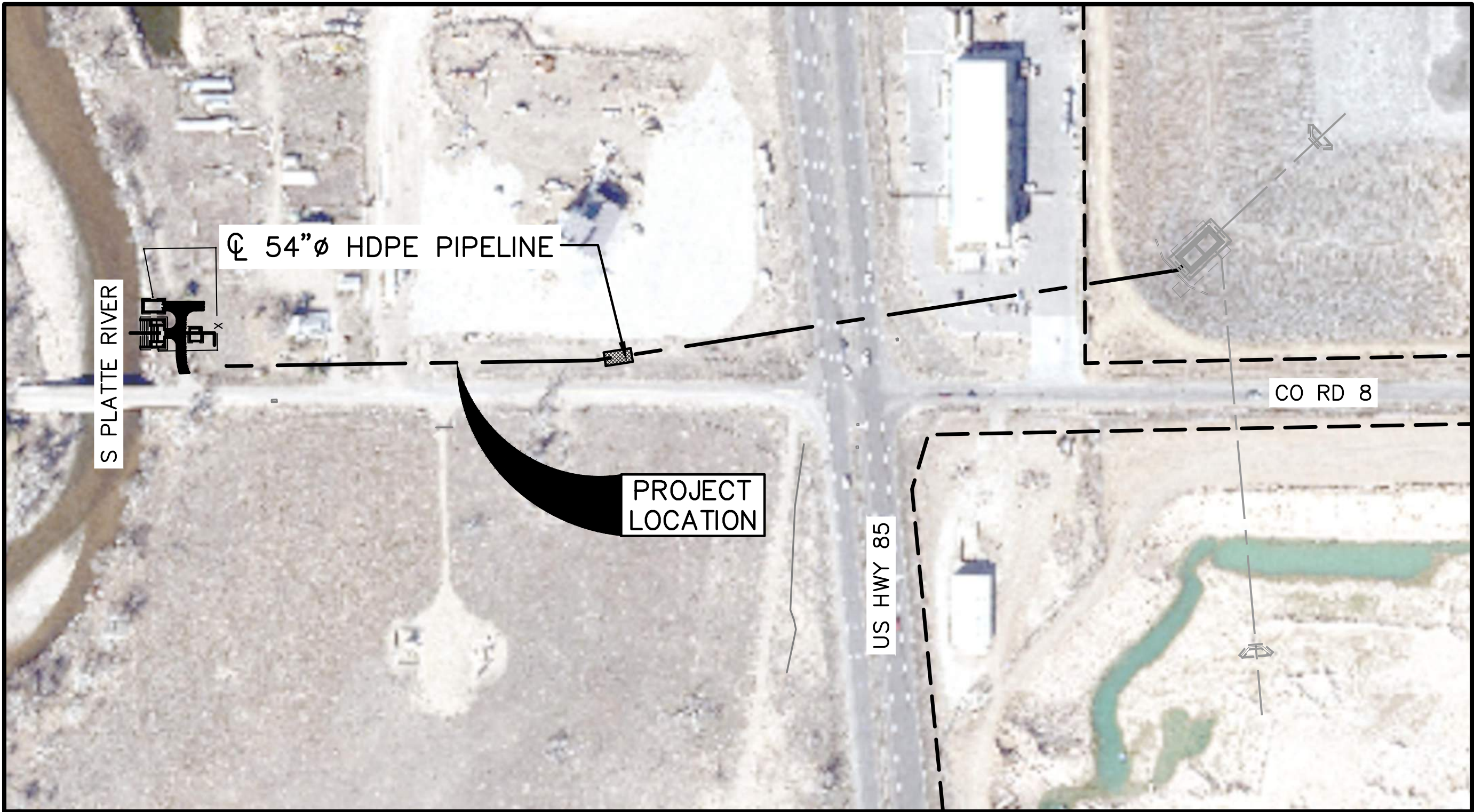
LUPTON LAKES  
INLET/OUTLET FACILITY  
CONTRACT 504380

BOARD OF WATER COMMISSIONERS  
DENVER, COLORADO

H. Gregory Austin – President

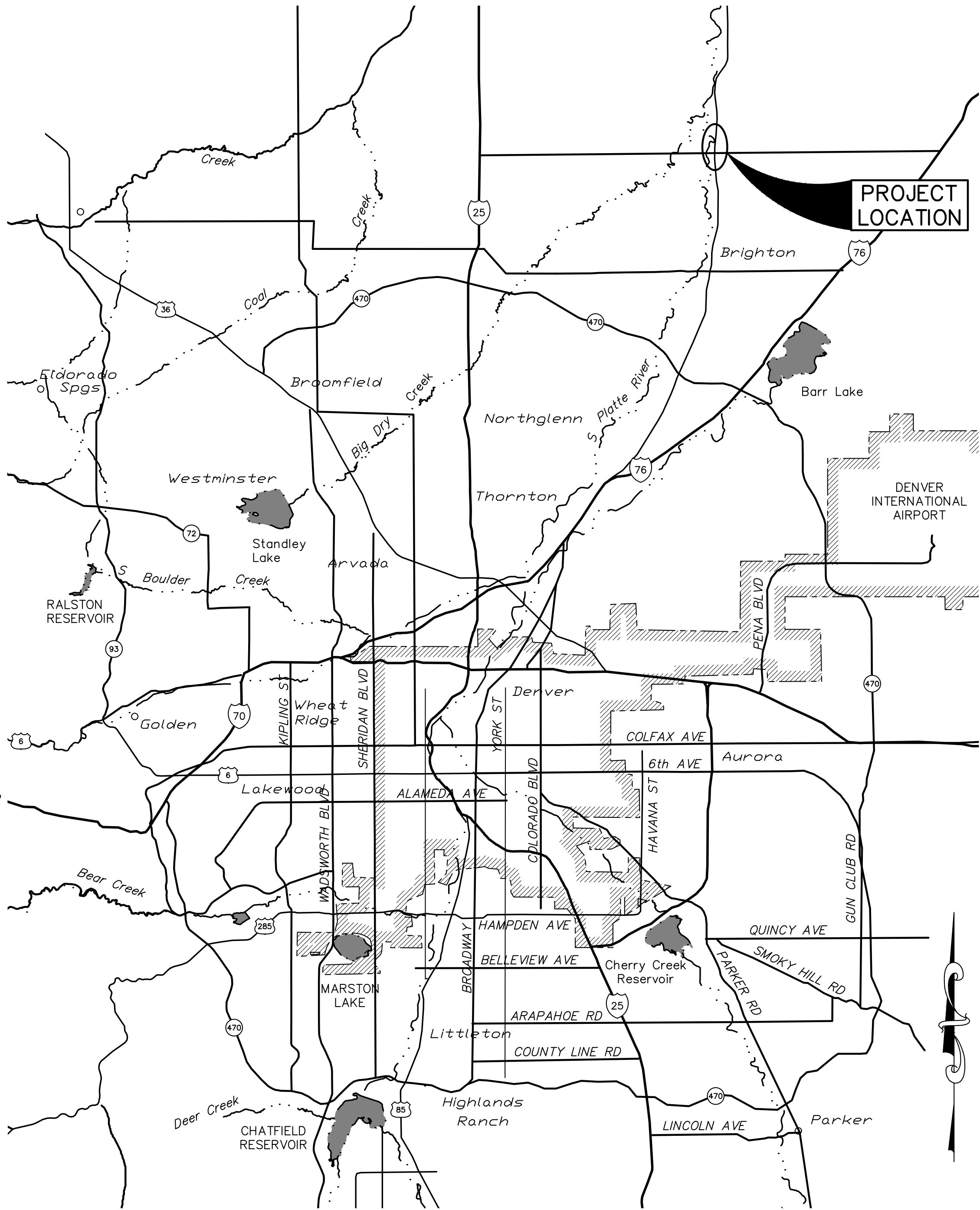
James S. Lochhead – CEO/Manager

Robert J. Mahoney – Chief Engineering Officer



VICINITY MAP  
SCALE 1" = 150'

\* GRAYSCALE INDICATES FUTURE WORK



LOCATION MAP  
SCALE: 1" = 3 miles

PROJECT DIRECTORY

UTILITY OWNER:  
DENVER WATER  
1600 W 12th AVE  
DENVER, CO 80204  
303-628-6000

CONTACT:  
DESIGN PROJECT MANAGER  
BRAD PIEDE, PE  
303-628-6756  
Brad.Piede@denverwater.org



1600 West 12th Ave  
Denver, Colorado 80204-3412  
T: 303.628.6000  
F: 303.628.6851  
denverwater.org

CONSULTANT



7595 TECHNOLOGY WAY, SUITE 200  
DENVER, CO 80237  
303.694-2770 (phone)  
303-694-3946 (fax)



LUPTON LAKES

INLET/OUTLET FACILITY

REFERENCE:  
CAPITAL PROJECTS CONSTRUCTION  
STANDARDS 3rd Edition

THIS DRAWING IS BASED ON THE DW\_FT  
LUPTON\_GRID COORDINATE SYSTEM

△	
△	
△	
△	
△	
△	
△	12/16/20 FINAL FOR CONSTRUCTION

No	Date	Description
REVISIONS		

VERIFY SCALES

BAR IS ONE INCH ON  
ORIGINAL DRAWING  
0 1"  
IF NOT ONE INCH ON  
THIS SHEET, ADJUST  
SCALES ACCORDINGLY

PT NO: 20123

DRAWN BY: SM/DS

CHKD BY: SB S. BERZINS/B. PIEDE

CHKD BY: SC S. COLE/D. BRINKER

APPD BY:

DATE: FEBRUARY 2020

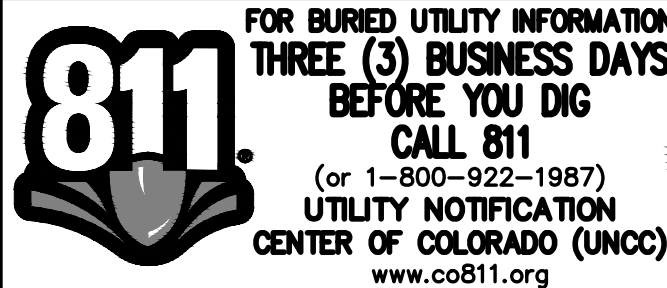
CONTRACT: 504380

AS-BUILT DATE:

AS-BUILT BY:

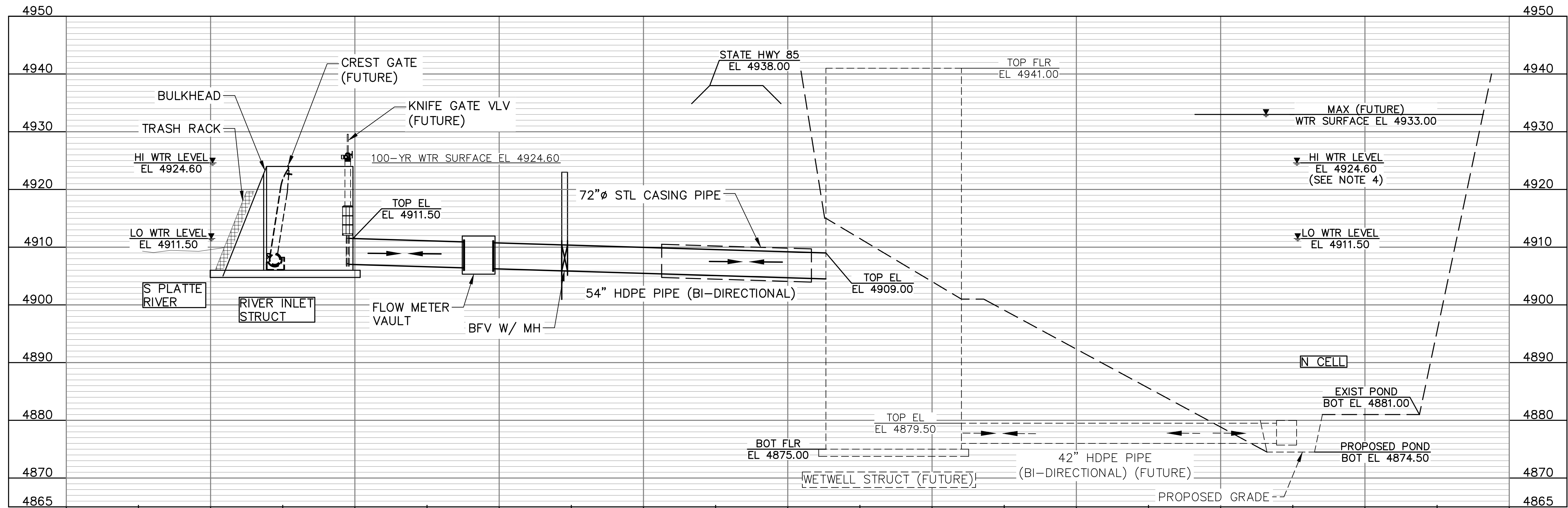
DRAWING TITLE

COVER SHEET





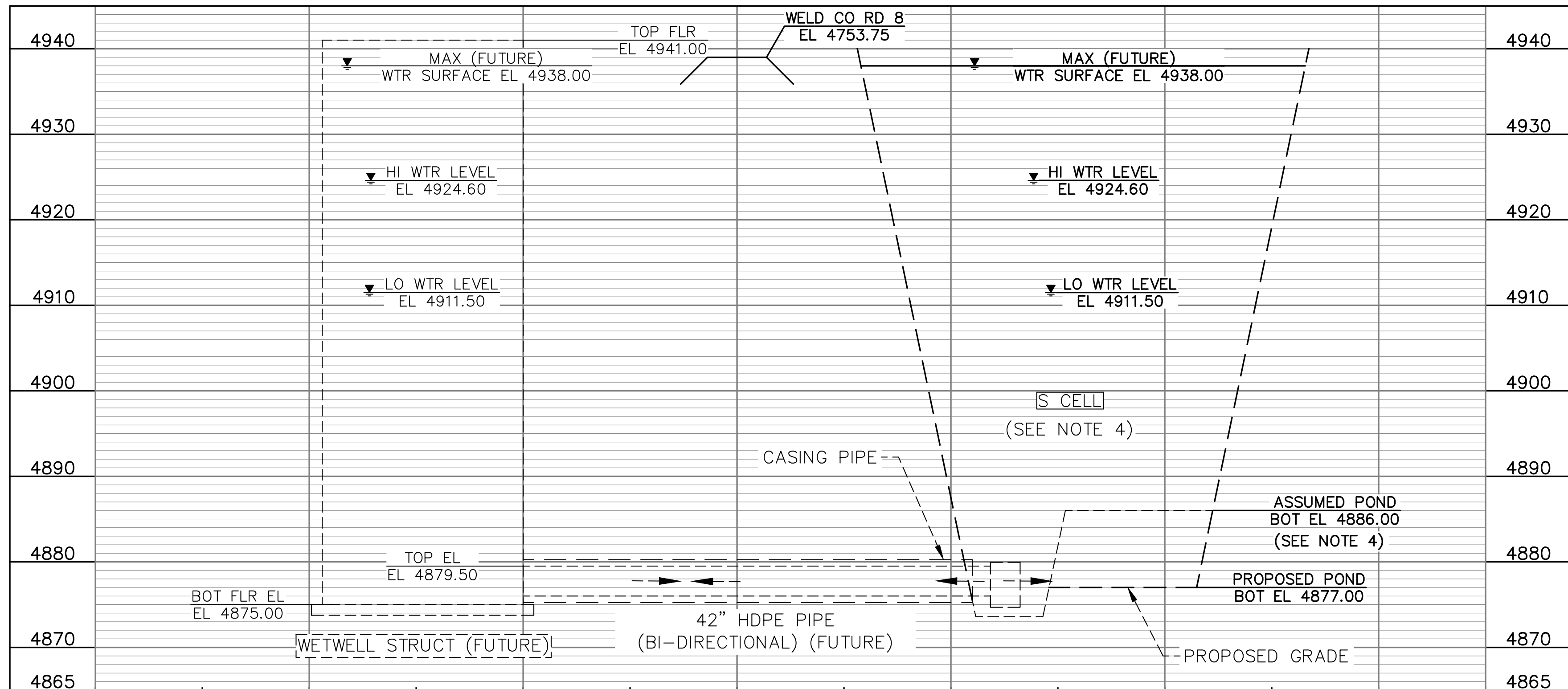
C:\pms\denverwater-pw\smuller\dms30762\20123\_HYDRAULIC PROFILE.dwg ##### HYDRAULIC PROFILE AND DESIGN CRITERIA 12/10/2020 8:24 AM



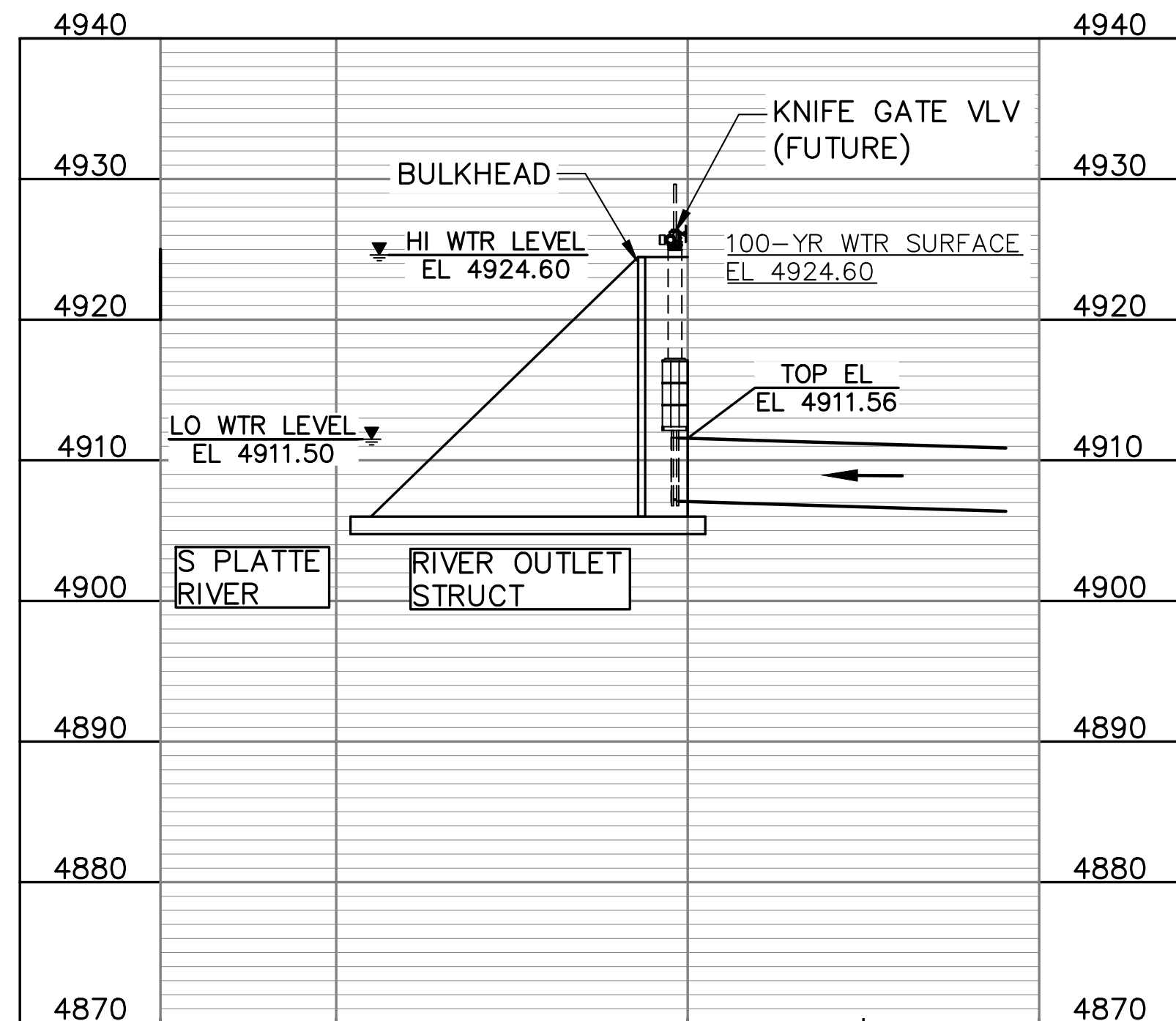
HYDRAULIC PROFILE  
INLET STRUCTURE TO NORTH CELL

NOTES:

1. SYSTEM ELEVATION BASED ON SURVEY PROVIDED BY DENVER WATER ON DECEMBER 6, 2019, SEE DWG G-7 FOR DETAILS.
2. RAW WATER FLOW RATES PROVIDED BY DENVER WATER.
3. THE SOUTH CELL IS CURRENTLY AN ACTIVE GRAVEL MINE. FINAL POND DESIGN AND GRADE WILL BE PART OF A FUTURE PROJECT. THE PROPOSED ELEVATIONS ARE BASED ON THE FUTURE DESIGN CONTOURS. ASSUMED BOTTOM BASED ON BEDROCK DEPTH.
4. THE WATER SURFACE ELEVATION FOR THIS PROJECT WILL VARY BASED ON SOUTH PLATTE RIVER ELEVATION. THE FUTURE MAXIMUM WATER SURFACE ELEVATION WILL BE BASED ON FUTURE PUMPING CONVEYANCE.



HYDRAULIC PROFILE  
WETWELL TO SOUTH CELL (FUTURE)



HYDRAULIC PROFILE  
OUTLET STRUCT TO TEE



1600 West 12th Ave  
Denver, Colorado 80204-3412  
T: 303.628.6000  
F: 303.628.6851  
denverwater.org

CONSULTANT

**AECOM**

7595 TECHNOLOGY WAY, SUITE 200  
DENVER, CO 80237  
303 694-2770 (phone)  
303-694-3946 (fax)



LUPTON LAKES

INLET/OUTLET FACILITY

REFERENCE:  
CAPITAL PROJECTS CONSTRUCTION  
STANDARDS 3rd Edition

THIS DRAWING IS BASED ON THE DW\_FT  
LUPTON\_GRID COORDINATE SYSTEM

△		
△		
△		
△		
△		
△		
△	12/16/20	FINAL FOR CONSTRUCTION

No	Date	Description
REVISIONS		

**VERIFY SCALES**

BAR IS ONE INCH ON  
ORIGINAL DRAWING  
0 1"  
IF NOT ONE INCH ON  
THIS SHEET, ADJUST  
SCALES ACCORDINGLY

PT NO: 20123

DRAWN BY: SM/JH

CHKD BY: S BERZINS/B. PIEDE

CHKD BY: S COLE/D. BRINKER

APPD BY:

DATE: FEBRUARY 2020

CONTRACT: 504380

AS-BUILT DATE:

AS-BUILT BY:

DRAWING TITLE

HYDRAULIC PROFILE



C:\bms\denverwater-pw\smuller\dms30762\20123\_GEO TECH PLAN.dwg ##### PLAN 12/10/2020 8:25 AM



PLAN  
SCALE: 1" = 60'



1600 West 12th Ave  
Denver, Colorado 80204-3412  
T: 303.628.6000  
F: 303.628.6851  
denverwater.org

CONSULTANT



7595 TECHNOLOGY WAY, SUITE 200  
DENVER, CO 80237  
303.694-2770 (phone)  
303-694-3946 (fax)



LUPTON LAKES

INLET/OUTLET FACILITY

REFERENCE:  
CAPITAL PROJECTS CONSTRUCTION  
STANDARDS 3rd Edition

THIS DRAWING IS BASED ON THE DW\_FT  
LUPTON\_GRID COORDINATE SYSTEM

△		
△		
△		
△		
△		
△		
△	12/16/20	FINAL FOR CONSTRUCTION

No	Date	Description
REVISIONS		

VERIFY SCALES

BAR IS ONE INCH ON  
ORIGINAL DRAWING  
0 1"  
IF NOT ONE INCH ON  
THIS SHEET, ADJUST  
SCALES ACCORDINGLY

PT NO: 20123

DRAWN BY: SM/DS

CHKD BY: SB S. BERZINS/B. BIEDE

CHKD BY: SC S. COLE/D. BRINKER

APPD BY:

DATE: FEBRUARY 2020

CONTRACT: 504380

AS-BUILT DATE:

AS-BUILT BY:

DRAWING TITLE

GEOTECHNICAL PLAN



**AECOM**

7595 TECHNOLOGY WAY, SUITE 200  
DENVER, CO 80237  
303 694-2770 (phone)  
303-694-3946 (fax)



CONC KICKBLOCK DIM TABLE			
STATION	TYPE	H-FT	W-FT
1+23.37	TYPE-1	5.90	18.80
1+36.33	TYPE-2	2.83	2.83
1+54.07	TYPE-1	5.90	10.20
1+79.26	TYPE-1	5.90	10.20

NOTES:

1. KICKBLOCKS NOT SHOWN;  
SEE 03001.
2. SEE C-1 FOR TREE  
REMOVAL.
3. SEE C-2 FOR 16" BYPASS  
KICKBLOCKING.
4. 54" 90° BEND AT STA  
1+23.37 TO BE FABRICATED  
AT 1 TIMES THE DIAMETER.


REFERENCE:  
CAPITAL PROJECTS CONSTRUCTION  
STANDARDS 3rd Edition

THIS DRAWING IS BASED ON THE DW\_FT  
LUPTON\_GRID COORDINATE SYSTEM

△		
△		
△		
△		
△		
△		
△	12/16/20	FINAL FOR CONSTRUCTION

No	Date	Description
REVISIONS		

## VERIFY SCALES


BAR IS ONE INCH ON  
ORIGINAL DRAWING  
0  1"  
IF NOT ONE INCH ON  
THIS SHEET, ADJUST  
SCALES ACCORDINGLY

PT NO: 20123
DRAWN BY: SM

SC JJ  
CHKD BY: S COLE/G THOMPSON

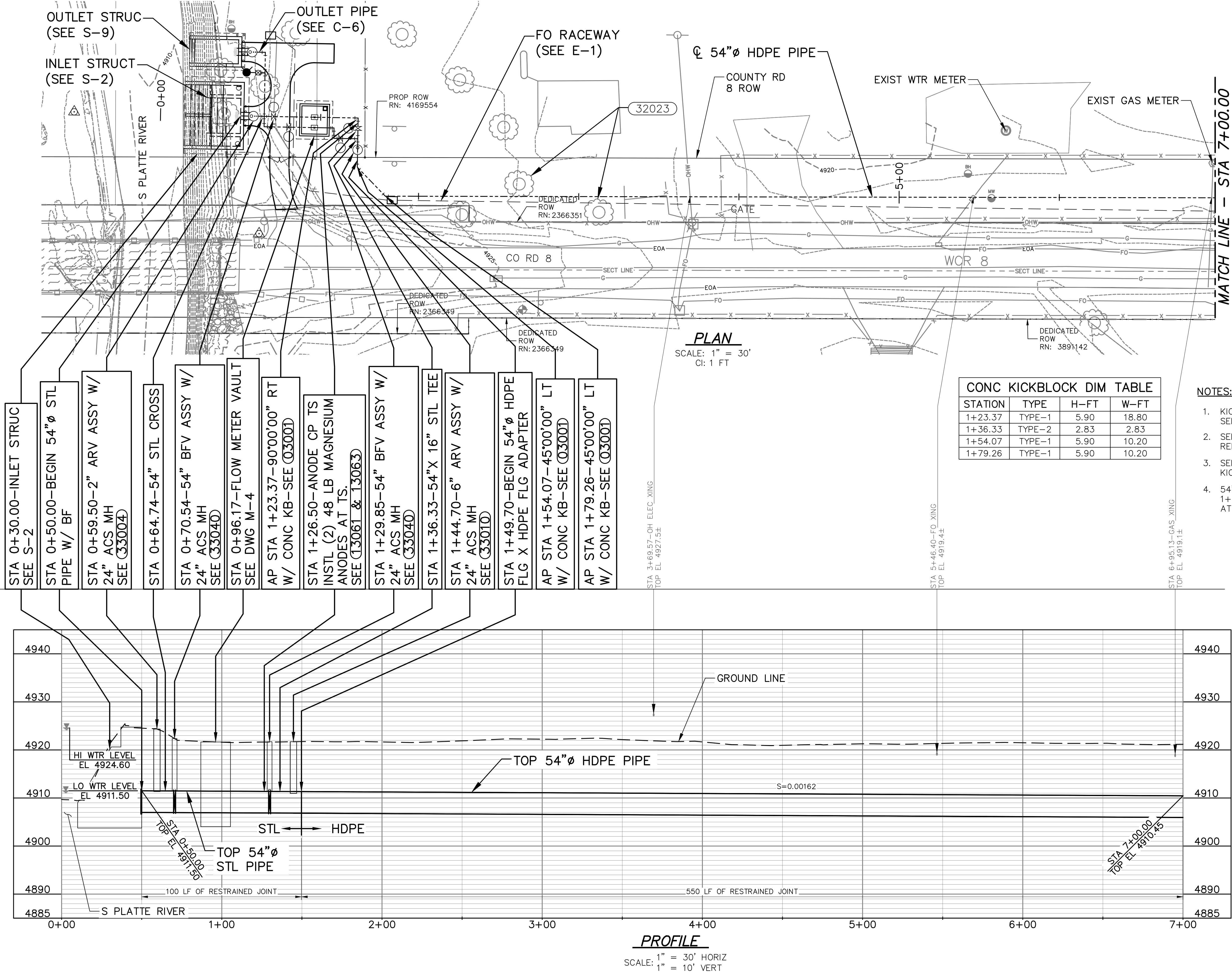
---

SB MST  
CHKD BY: S BERZINS/M TURNEY

APPD BY:	
DATE:	FEBRUARY 2020
CONTRACT:	504380
AS-BUILT DATE:	
AS-BUILT BY:	
DRAWING TITLE	

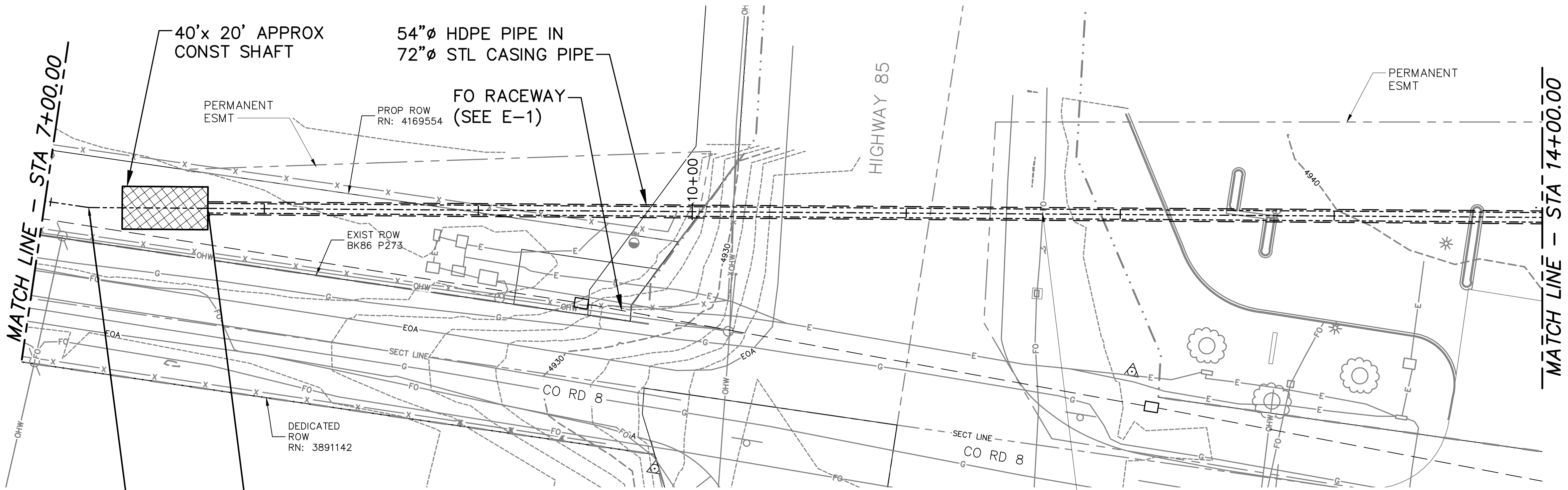
# RIVER TO NORTH CELL PLAN AND PROFILE

C-3





C:\bms\denverwater-pw\smuller\dms30762\20123\_PNP RIVER TO WETWELL PIPING 2 OF 3.dwg ### PNP2 12/10/2020 8:27 AM



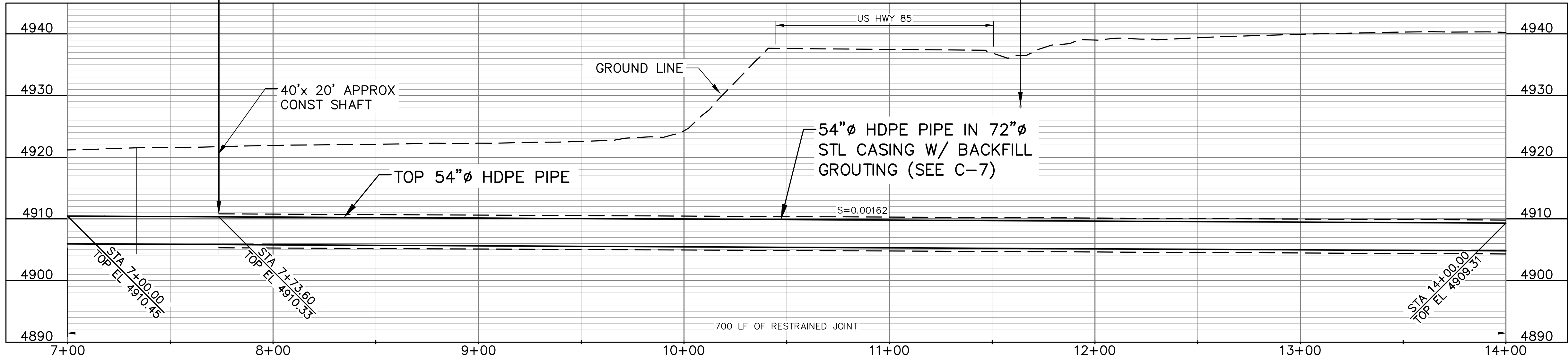
**PLAN**  
SCALE: 1" = 30'  
CI: 1 FT

AP STA 7+17.92-7+55.1' LT  
W/ CONC KB-SEE (C3001)

STA 7+73.60-BEGIN 72"Ø STL  
CASING-SEE (C310D & C-7)

STA 11+63.76-FO XING  
TOP EL 4928.5±

CONC KICKBLOCK DIM TABLE			
STATION	TYPE	H-FT	W-FT
7+17.92	TYPE-1	5.90	10.20



**PROFILE**  
SCALE: 1" = 30' HORIZ  
1" = 10' VERT



**LUPTON LAKES**

INLET/OUTLET FACILITY

REFERENCE:  
CAPITAL PROJECTS CONSTRUCTION  
STANDARDS 3rd Edition

THIS DRAWING IS BASED ON THE DW\_FT  
LUPTON\_GRID COORDINATE SYSTEM

△		
△		
△		
△		
△		
△		
△	12/16/20	FINAL FOR CONSTRUCTION

No Date Description  
REVISIONS

**VERIFY SCALES**

BAR IS ONE INCH ON  
ORIGINAL DRAWING  
0 1"  
IF NOT ONE INCH ON  
THIS SHEET, ADJUST  
SCALES ACCORDINGLY

PT NO: 20123

DRAWN BY: SM

CHKD BY: SC  
S COLE/G THOMPSON

CHKD BY: SB  
S BERZINS/M TURNER

APPD BY:

DATE: FEBRUARY 2020

CONTRACT: 504380

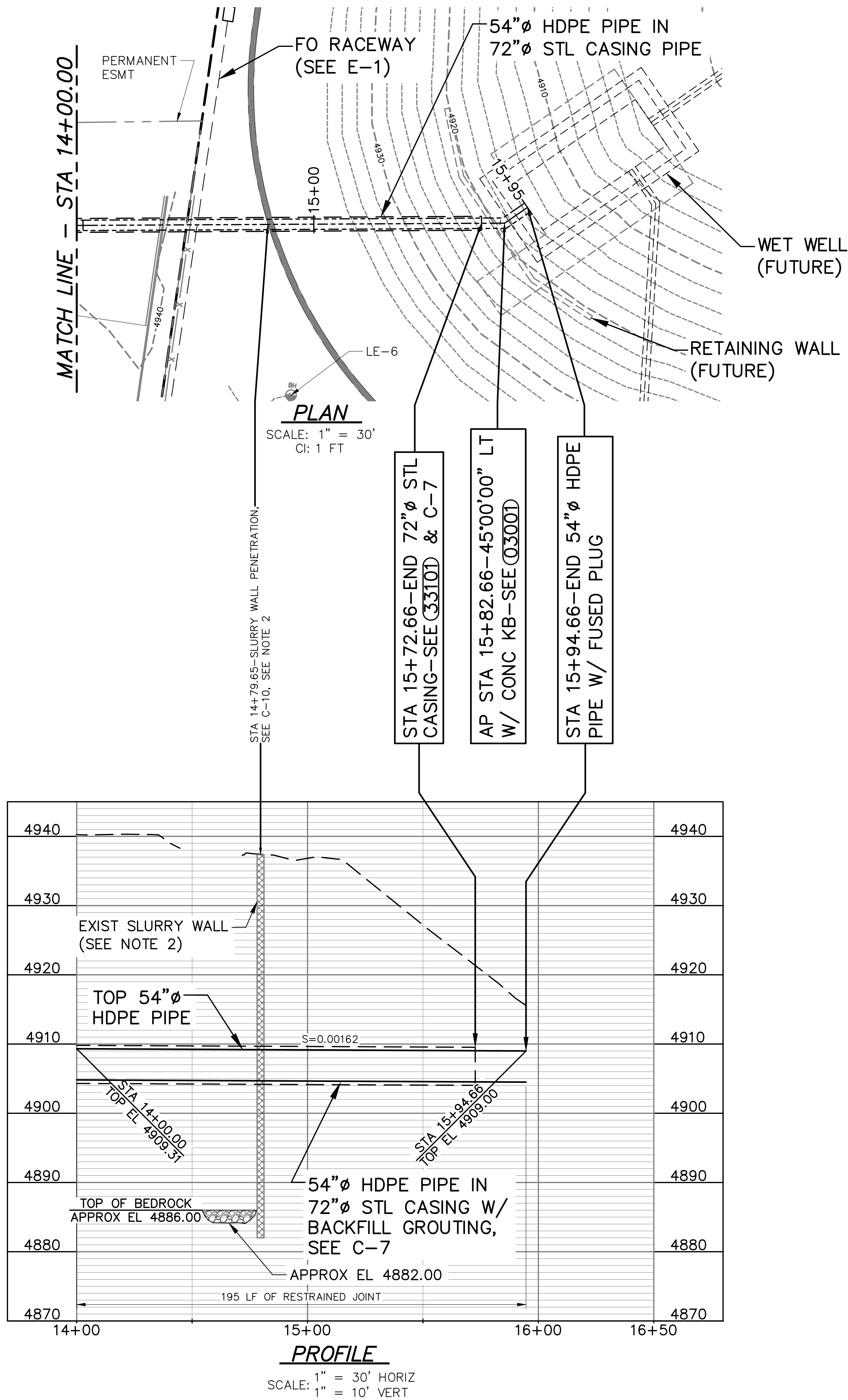
AS-BUILT DATE:

AS-BUILT BY:

DRAWING TITLE

RIVER TO NORTH  
CELL PLAN AND  
PROFILE

C:\bms\denverwater-pw\smuller\dms30762\20123\_PNP RIVER TO WETWELL PIPING 3 OF 3.dwg ### PNP3 12/10/2020 8:28 AM



**NOTES:**

- BEDROCK ELEVATION OF 4885.91 AT LE-6 IS APPROXIMATE AND BASED ON GEOTECHNICAL INFORMATION PROVIDED BY LITHOS JANUARY 7, 2020.
- EXISTING SLURRY WALL ELEVATION APPROXIMATED FROM THE NORTH CELL GROUND WATER CUTOFF WALL AS-BUILT PLANS DATED JULY, 2018, PREPARED BY DEERE & AULT CONSULTANTS. EXISTING SLURRY WALL IS SOIL BENTONITE APPROX 2.5' WIDE.

**CONC KICKBLOCK DIM TABLE**

STATION	TYPE	H-FT	W-FT
15+82.66	TYPE-1	5.90	10.20
15+94.66	TYPE-3	5.90	13.40



1600 West 12th Ave  
Denver, Colorado 80204-3412  
T: 303.628.6000  
F: 303.628.6851  
denverwater.org

CONSULTANT

**AECOM**

7595 TECHNOLOGY WAY, SUITE 200  
DENVER, CO 80237  
303.694-2770 (phone)  
303-694-3946 (fax)



**LUPTON LAKES**

INLET/OUTLET FACILITY

**REFERENCE:**

CAPITAL PROJECTS CONSTRUCTION  
STANDARDS 3rd Edition

THIS DRAWING IS BASED ON THE DW\_FT  
LUPTON\_GRID COORDINATE SYSTEM

△		
△		
△		
△		
△		
△		
△	12/16/20	FINAL FOR CONSTRUCTION

No Date Description  
REVISIONS

**VERIFY SCALES**

BAR IS ONE INCH ON  
ORIGINAL DRAWING  
0 1"  
IF NOT ONE INCH ON  
THIS SHEET, ADJUST  
SCALES ACCORDINGLY

PT NO: 20123

DRAWN BY: SM

SC  
CHKD BY: S COLE/G THOMPSON

SB  
CHKD BY: S BERZINS/M TURNER

APPD BY: *[Signature]*

DATE: FEBRUARY 2020

CONTRACT: 504380

AS-BUILT DATE:

AS-BUILT BY:

DRAWING TITLE

RIVER TO NORTH  
CELL PLAN AND  
PROFILE

C-5