

Pre-Mine Land Use Map



New Horizon Mine
Permit No. C-1981-008
P.O. Box 628, Nucla, CO. 81424

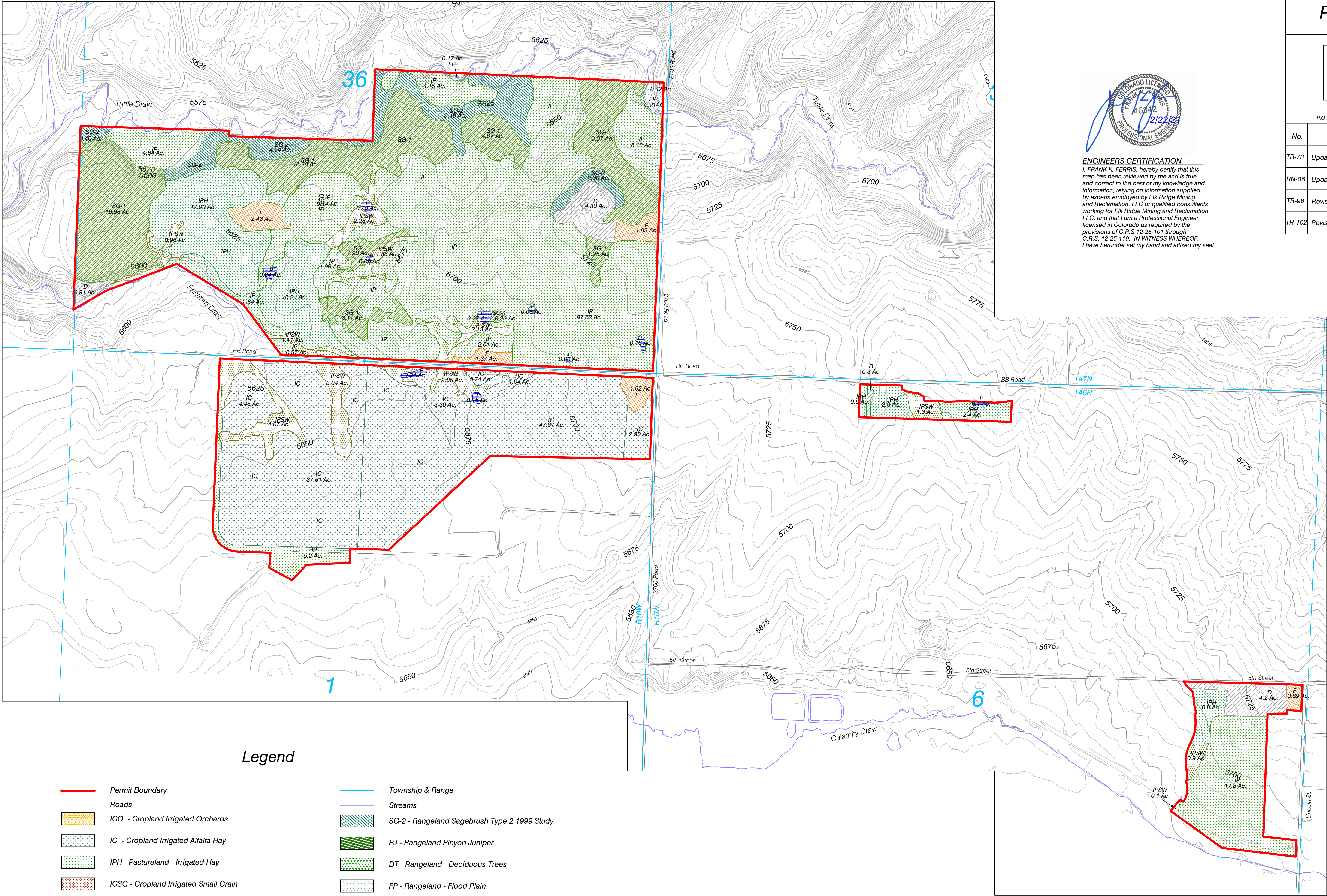
SCALE: 1" = 400'
ORIGINAL DATE: 6/25/2015
DWG. BY: ESI/TCP
APPROVED BY: FKF

DWG NO.
Map 2.04.3

No.	REVISION	DATE	BY	CHK
TR-73	Updated Permit boundary, edited for clarity.	6/9/16	TCP	FKF
RN-06	Update with current permit boundary	11/6/17	JSS	FKF
TR-98	Revised Permit Boundary	3/13/20	Tony	FKF
TR-102	Revised Permit Boundary/Removed Land Uses	2/22/21	Tony	FKF



ENGINEERS CERTIFICATION
I, FRANK K. FERRIS, hereby certify that this map has been reviewed by me and is true and correct to the best of my knowledge and information, relying on information supplied by experts employed by Elk Ridge Mining and Reclamation, LLC or qualified consultants working for Elk Ridge Mining and Reclamation, LLC, and that I am a Professional Engineer licensed in Colorado as required by the provisions of C.R.S. 12-25-101 through C.R.S. 12-25-119. IN WITNESS WHEREOF, I have herunder set my hand and affixed my seal.



Legend

- Permit Boundary
- Roads
- ICO - Cropland Irrigated Orchards
- IC - Cropland Irrigated Alfalfa Hay
- IPH - Pastureland - Irrigated Hay
- ICSG - Cropland Irrigated Small Grain
- IP - Pastureland Irrigated Grass
- IPSW - Pastureland Irrigated Swale
- SG - Rangeland Sagebrush Type Original 1987 Study
- SG-1 - Rangeland Sagebrush Type 1 1999 Study

Township & RangeStreamsSG-2 - Rangeland Sagebrush Type 2 1999 StudyPJ - Rangeland Pinyon JuniperDT - Rangeland - Deciduous TreesFP - Rangeland - Flood PlainF - Residential - FarmsteadsD - Residential - Open Space Disturbed AreasP - Developed Water Resources - Stock Ponds