



File Code: 2810
Date: February 19, 2021

Jeff Carter
SSG Mining, Inc.
15954 Jackson Ck Pkwy B281
Monument, CO 80132

Dear Mr. Carter:

This letter is to acknowledge receipt of your Lombard #3 Mine Plan of Operations (POO) in accordance with the Forest Service (FS) mining regulations at 36 CFR 228.5(a). The POO is dated January 26, 2021 and was received on January 26, 2021 by the Clear Creek Ranger District, Arapaho National Forest.

The Lombard #3 Mine POO outlines your intent to conduct exploration work on the Lombard #3 claim located in the Alice-Yankee Hill Mining District, T. 3 S., R. 74 W. Section 1, 6th P.M. The POO described activities including:

- Use of existing roads (Cumberland Gulch Road, FSR 271.1)
- Excavation to open adit
- Installation of new gate at adit opening
- Underground operations include removal of material for testing and sampling

An interdisciplinary (ID) team conducted an initial analysis of the plan on February 11, 2021 to disclose the environmental impacts from the proposed activity, as required under the National Environmental Policy Act (NEPA). It was determined that a site visit and survey will need to be done to complete the environmental review. The site needs to be accessible and clear of snow to complete survey work. In accordance with the Forest Service (FS) mining regulations at 36 CFR 228.5(a) the plan has been reviewed, but more time, not to exceed an additional sixty (60) days, is necessary to complete such review, provided however, days during which the area of operations is inaccessible for inspection shall not be included when computing the sixty (60) day period. For the adit closing, a bat gate may need to be installed and specifications have been provided for your initial review. Following completion of the NEPA analysis, you will be required to accept any stipulations the Forest deems necessary to minimize adverse impacts, in addition to posting an acceptable reclamation bond in accordance with 36 CFR 228.13.

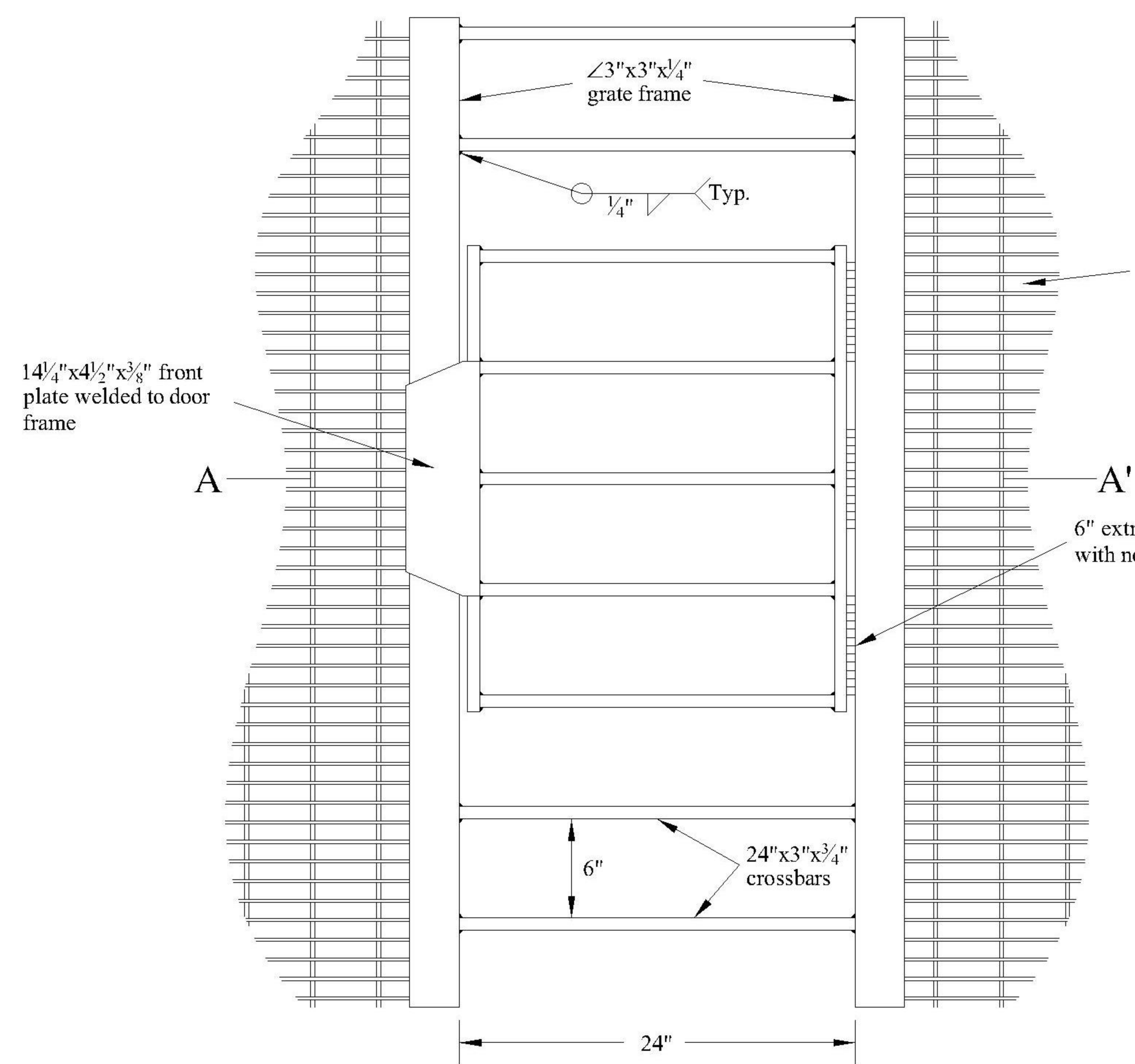
If you have any questions or once the site is accessible, please contact Nicole Malandri, Lands and Mineral Staff at the Clear Creek Ranger District, by phone at 720-667-9280, and/or by email at nicole.malandri@usda.gov to schedule a field visit with staff.

Sincerely,

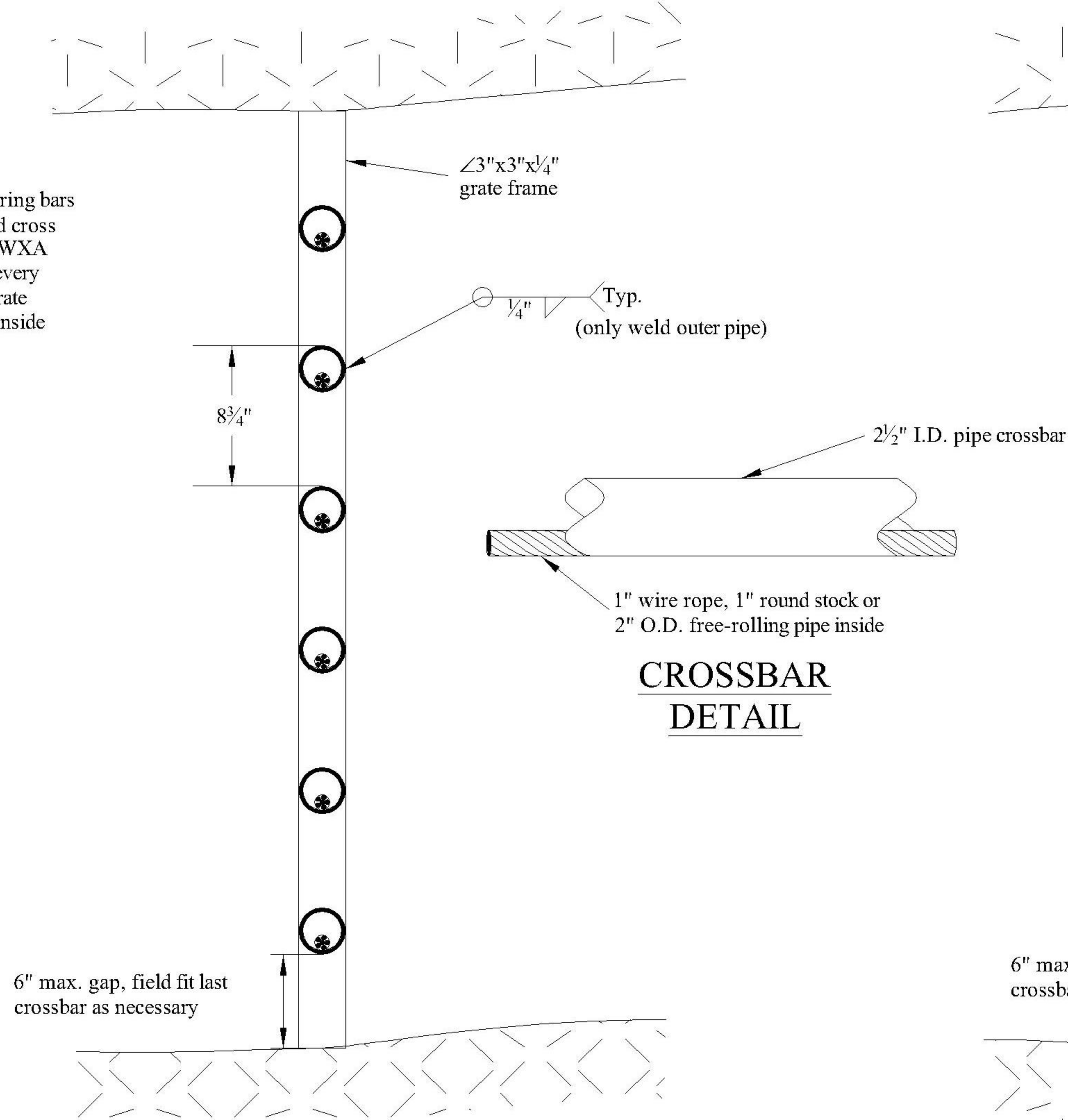
SCOTT E. HAAS
District Ranger

Enc: Bat Gate Specifications
cc: Peter Hays, Colorado DRMS; Cyndie Ruschmyer, Clear Creek County

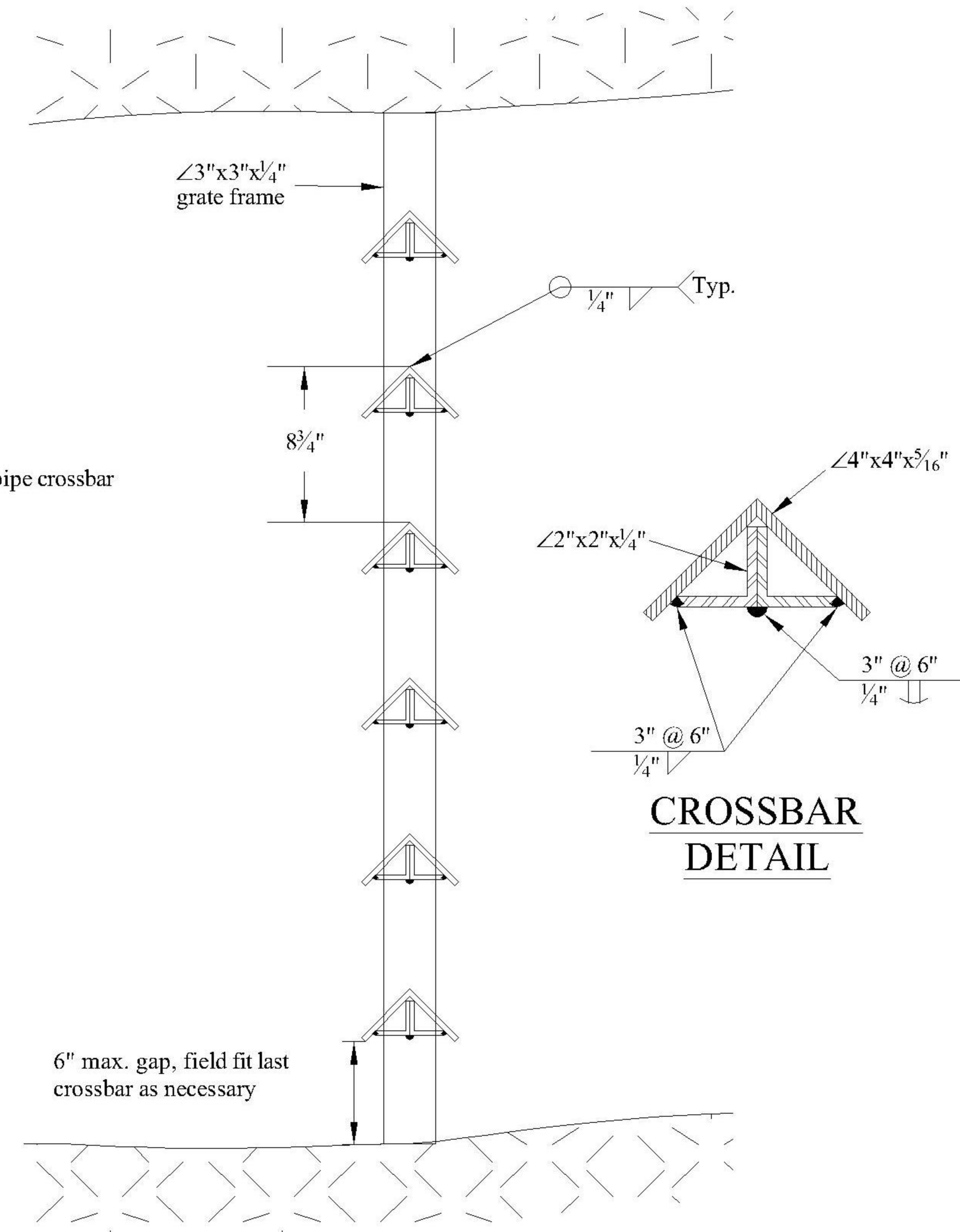




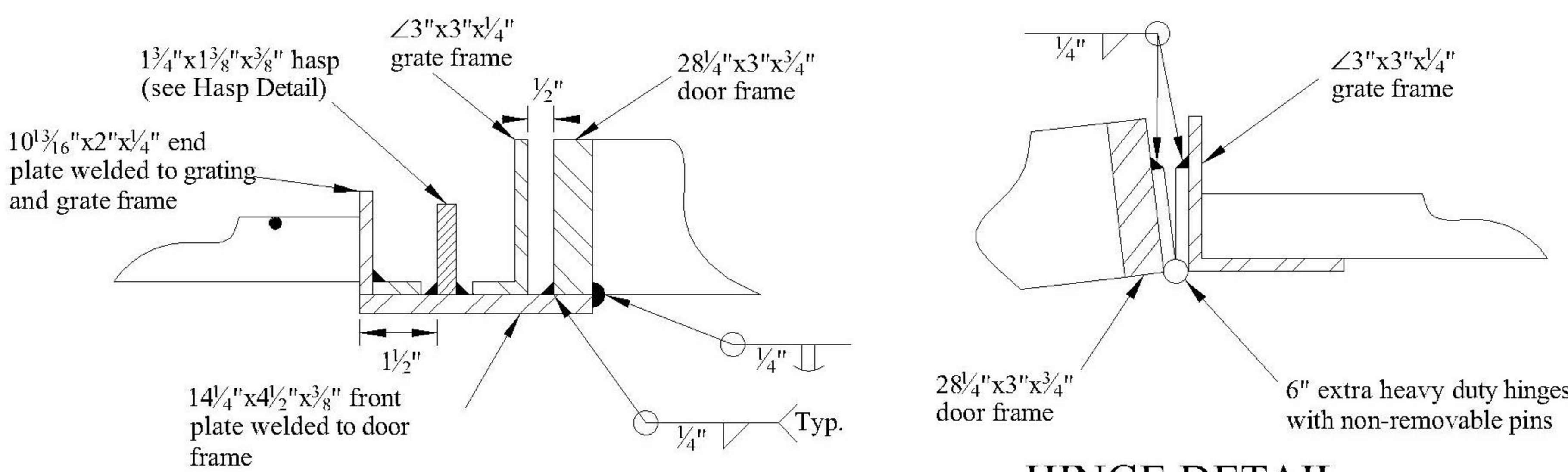
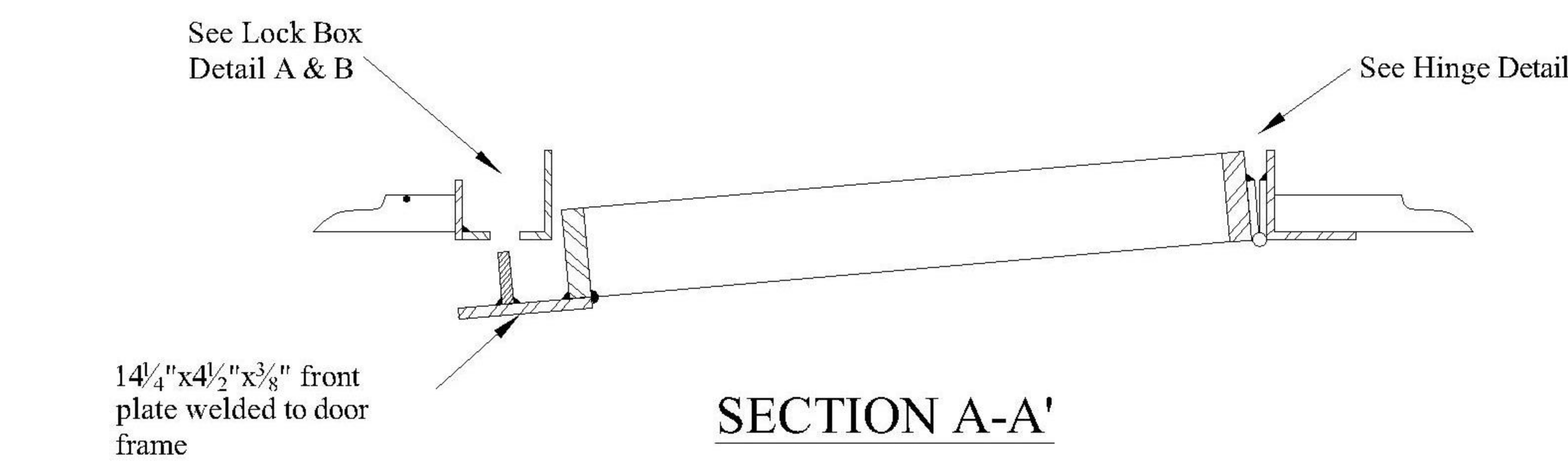
BAT CLOSURE
BAR STOCK CROSSBAR ALTERNATIVE



BAT CLOSURE
PIPE CROSSBAR ALTERNATIVE
(Adapted from Utah Dept. of Oil, Gas, and Mining)

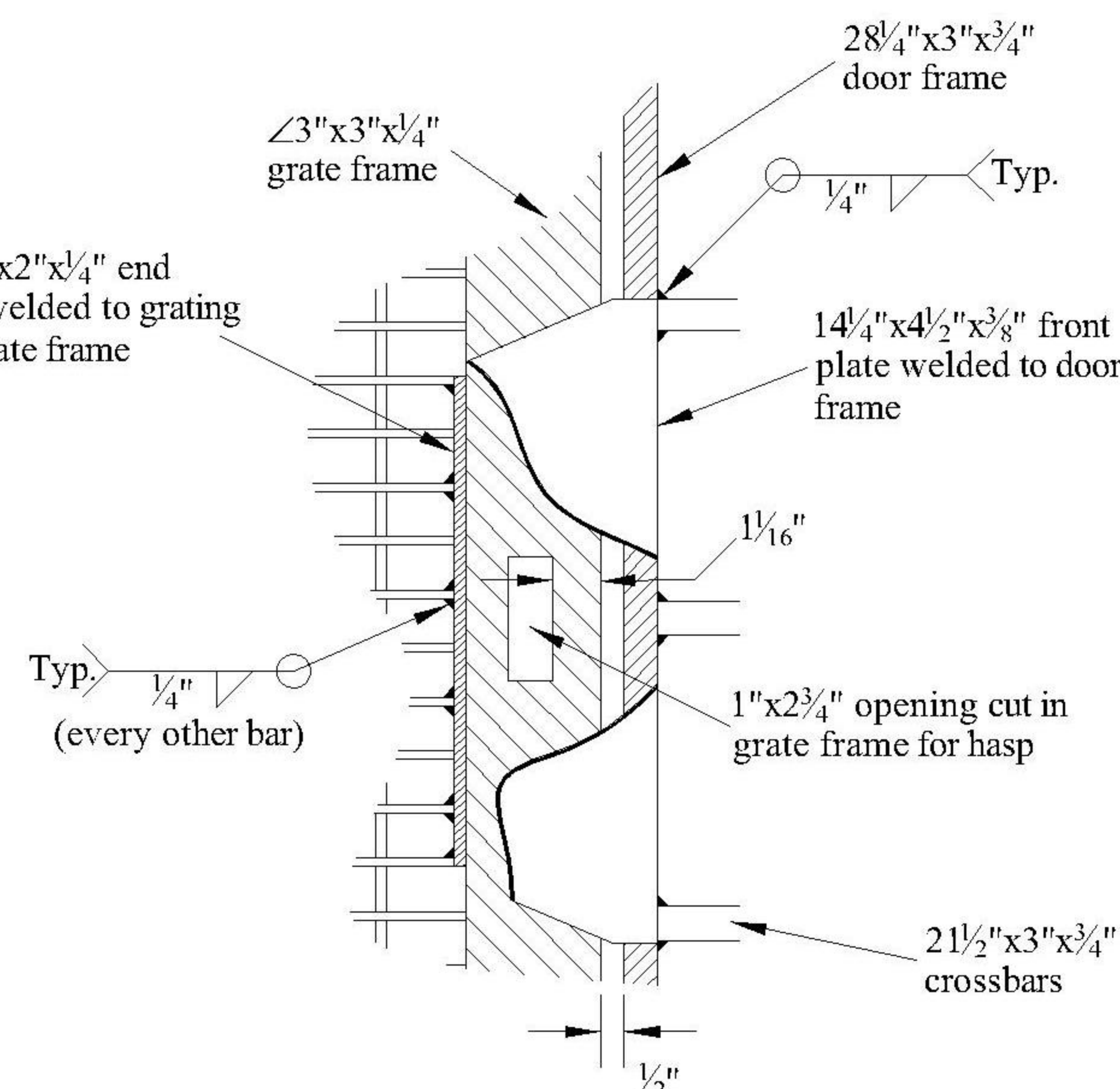


BAT CLOSURE
ANGLE IRON CROSSBAR ALTERNATIVE

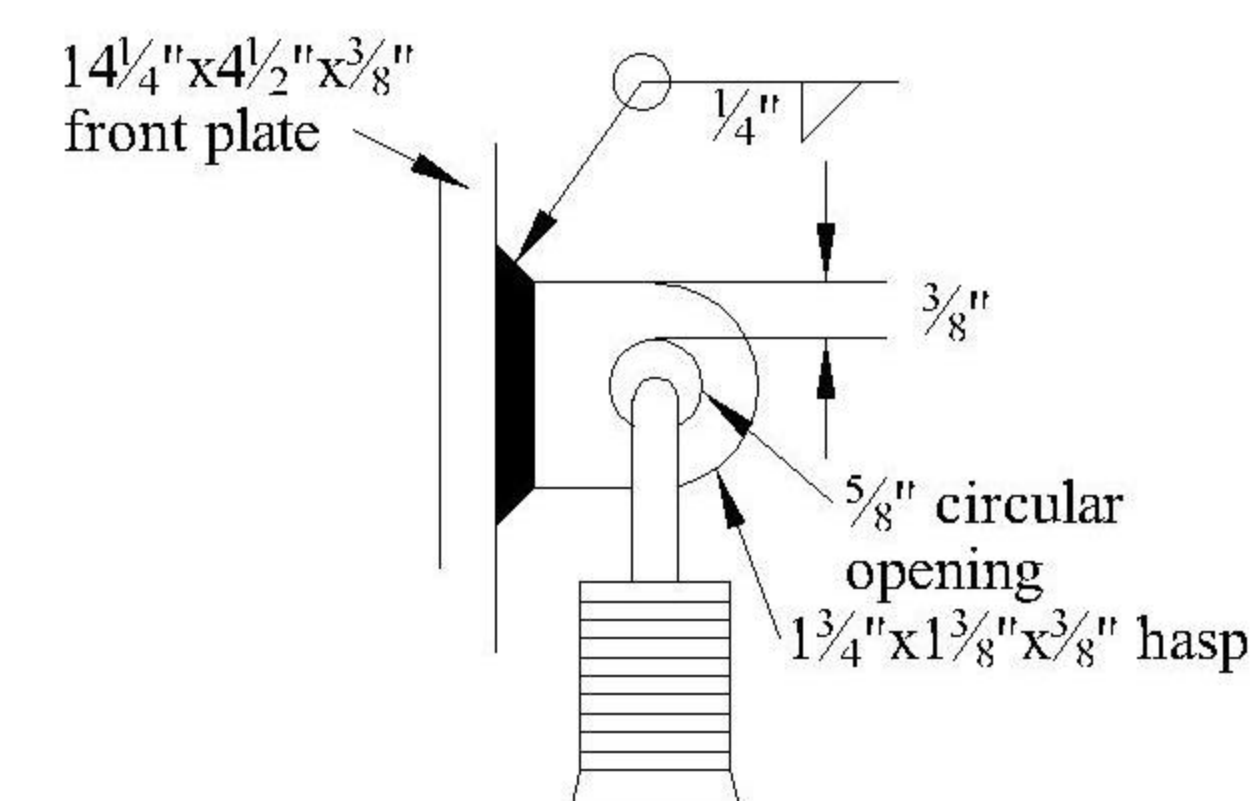


LOCK BOX
DETAIL B
*Maximum $\frac{1}{4}"$ free-play in door.

HINGE DETAIL

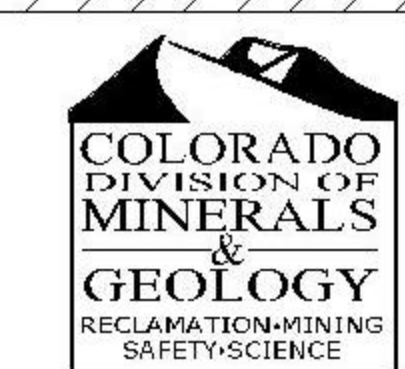


LOCK BOX
DETAIL A
(Front plate cut away)



HASP DETAIL

CAUTION: This project requires construction work around and over hazardous and unprotected mine shafts, stope, adits, and other openings which may be open to the surface or hidden from view by trash, debris or thin and unstable layers of surficial materials or rock. The contractor shall be responsible for thoroughly investigating the site conditions and scheduling his equipment, equipment operations, personnel and safety procedures to prevent accidents and injuries.



INACTIVE MINE RECLAMATION PROGRAM

STANDARD DRAWING No. 6
BAT GRATE ALTERNATIVES

Scale Varies	1/30/04	Sheet No. 2 of 2
Drawn by: JTG	Reviewed by: JTH & ALA	