

# Environmental Protection Facility Certification

Henderson Mine – Permit No. M-1977-342

## Seep Spoils Storage Facility

---

The Seep Spoils Storage Facility Project is located at Climax Molybdenum Company's Henderson Mill in Grand County. The Seep Spoils Storage Facility is located at the toe of 1 Dam between the Ultimate Canal pipeline and the Primary Seepwater Detention Area (SDA). The project involved the construction of a main embankment and two side embankments on the existing slope of the facility area. The purpose of the facility is to store seep spoils collected and hauled from seepage locations at the toe of 1 Dam. A filtered drain was constructed at the upstream toe of the main embankment to allow the seep spoils to drain and dry. The filter drain is connected to a slotted outlet pipe bedded in cobbles that discharges to the south into the Primary SDA.

Henderson Mill personnel have substantially completed the construction of the project. The undersigned was responsible for the inspection of as-built conditions of this facility, but was not involved or present during construction. The Record Drawings of the project are attached.

Pursuant to Rule 7.3.2, the Professional Engineer that has signed and sealed below certifies that the project was completed in general conformance with what is shown on the Record Drawings as submitted to the Division of Reclamation, Mining, and Safety. This statement is based in part on information that has been provided by others.



Trevor E. Mugele, P.E.  
W. W. Wheeler and Associates, Inc.

August 20, 2020

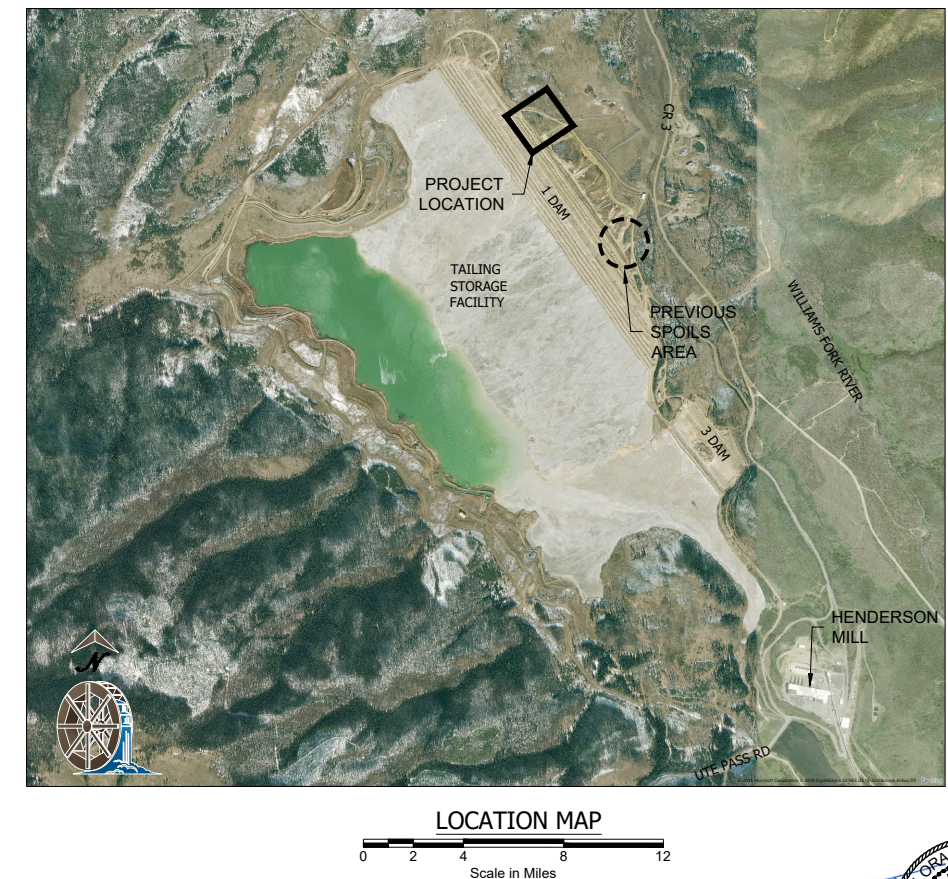
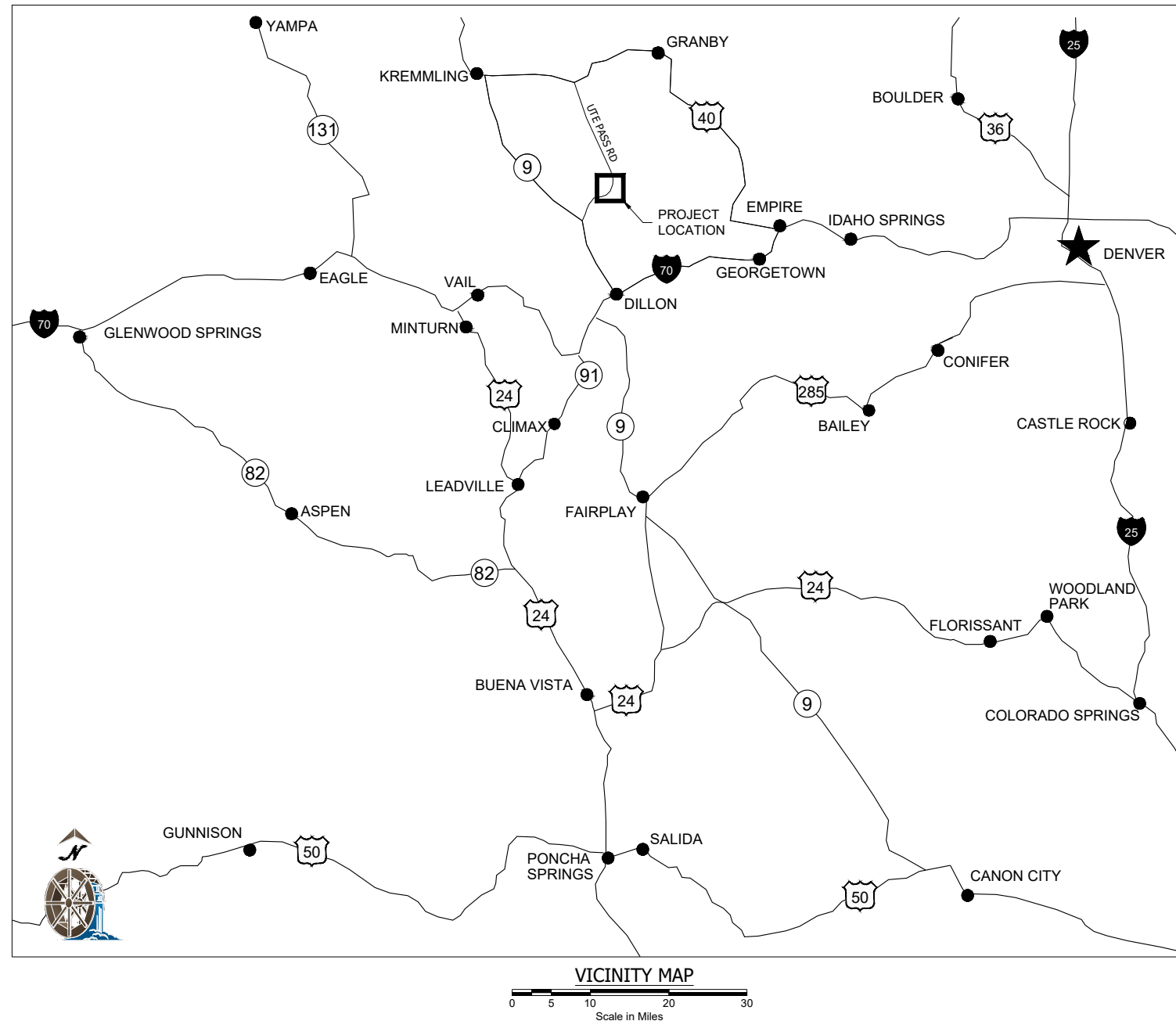
Date





# SEEP SPOILS STORAGE FACILITY

## HENDERSON MILL

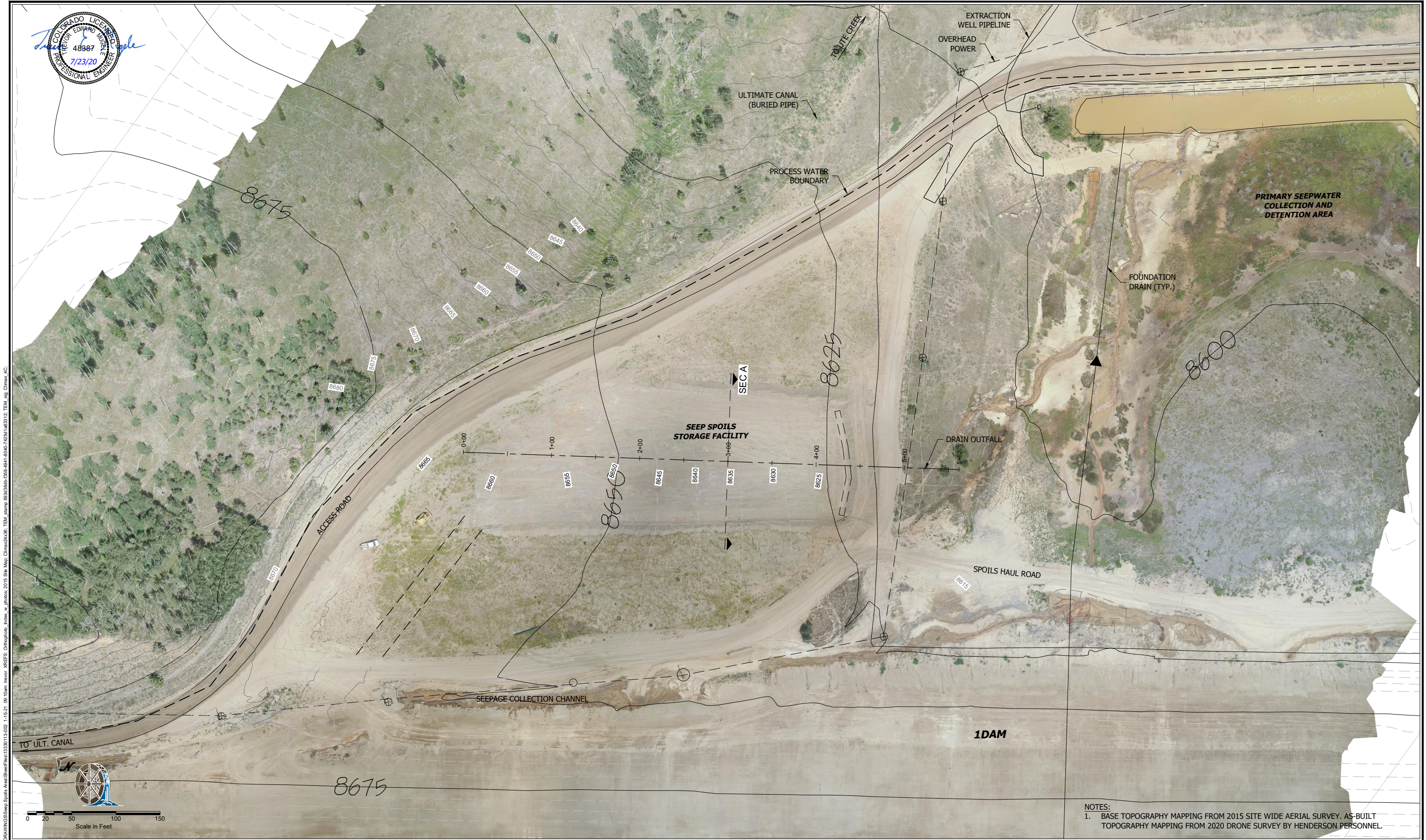
PARSHALL, CO

DRAWING INDEX	
DRAWING NO.	DRAWING TITLE
G1	COVER SHEET, DRAWING INDEX, AND LOCATION MAPS
G2	GENERAL ARRANGEMENT - SITE PLAN
C1	AS-BUILT - PLAN VIEW
C2	AS-BUILT - PROFILE, SECTIONS, AND DETAILS



REVISIONS	NO.	DATE	MADE BY	CKD. BY	REMARKS
		07/20	SAA	TEM	RECORD DRAWING
"This drawing together with any and all additions, corrections, changes and alterations thereof is the property of Climax Molybdenum Company and is furnished on the express condition that it shall not be reproduced, copied, lent, or disposed of directly or indirectly, nor used for any other purpose than for which it is specifically furnished without the prior written consent of said Climax Molybdenum Company."					
REFERENCE DWGS	DRAWING NO.	REFERENCE			
 <b>Climax Molybdenum</b> A Freeport-McMoRan Company		 <b>W. W. WHEELER &amp; ASSOCIATES, INC.</b> Water Resources Engineers		3700 S. INCA STREET ENBLEWOOD, CO 80110-3405 303-761-4130 FAX 303-761-2802	
		SEEP SPOILS		Climax Molybdenum Henderson Mill	
		STORAGE FACILITY		MADE BY <b>TEM</b>	PROJECT NUMBER <b>1333.00</b>
		COVER SHEET, DRAWING LIST		CHANGED BY <b>SMM</b>	DRAWING NO. <b>G1</b>
		AND LOCATION MAPS		ACCEPTED BY ...	
					





NOTES:  
1. BASE TOPOGRAPHY MAPPING FROM 2015 SITE WIDE AERIAL SURVEY. AS-BUILT TOPOGRAPHY MAPPING FROM 2020 DRONE SURVEY BY HENDERSON PERSONNEL.

NO.	DATE	MADE BY	CKD. BY	REMARKS
1	07/20	SAA	TEM	RECORD DRAWING

"This drawing together with any and all additions, corrections, changes and alterations thereof" is the property of Climax Molybdenum Company and is furnished on the express condition that it shall not be reproduced, copied, lent, or disposed of directly or indirectly, nor used for any other purpose than for which it is specifically furnished without the prior written consent of said Climax Molybdenum Company."

DRAWING NO.	REFERENCE



A Freeport-McMoRan Company



Water Resources Engineers

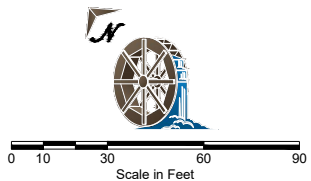
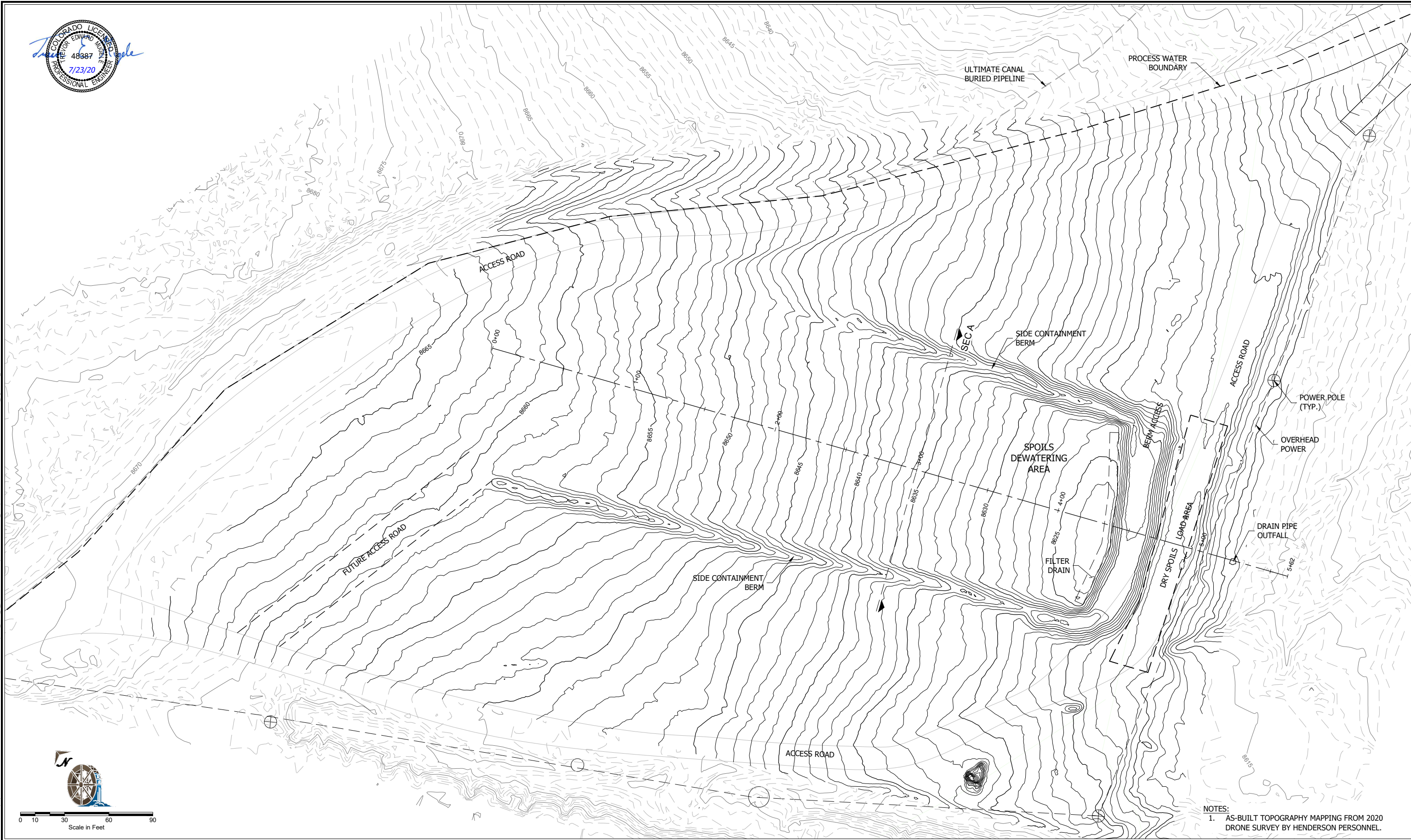
3700 S. INCA STREET  
ENGLEWOOD, CO 80110-3405  
303-761-4130  
FAX 303-761-2802

SEEP SPOILS
STORAGE FACILITY
GENERAL ARRANGEMENT
SITE PLAN

Climax Molybdenum Henderson Mill Parshall, CO		
MADE BY TEM	07/20	PROJECT NUMBER 1333.00
CHECKED BY SMM	07/20	DRAWING NO.
ACCEPTED BY ...		G2

R:\13001\13331\13331\_01\DRAWINGS\Seep Spoils Area\Sheet\13331113-002 1:15-21 09:10am Trevor XREFS: Orthophoto Index v. photos: 2015 Site Map, Climax24x36; TEM\_samps 6933366b-f5b-4941-8040-7426f188312; TEM\_img Climax 4.C;





NOTES:  
1. AS-BUILT TOPOGRAPHY MAPPING FROM 2020  
DRONE SURVEY BY HENDERSON PERSONNEL.

REVISIONS	NO.	DATE	MADE BY	CHKD. BY	REMARKS
	1	07/20	SAA	TEM	RECORD DRAWING

"This drawing together with any and all additions, corrections, changes and alterations thereof is the property of Climax Molybdenum Company and is furnished on the express condition that it shall not be reproduced, copied, lent, or disposed of directly or indirectly, nor used for any other purpose than for which it is specifically furnished without the prior written consent of said Climax Molybdenum Company."

REFERENCE DWGS	DRAWING NO.	REFERENCE



**Climax Molybdenum**  
A Freeport-McMoRan Company



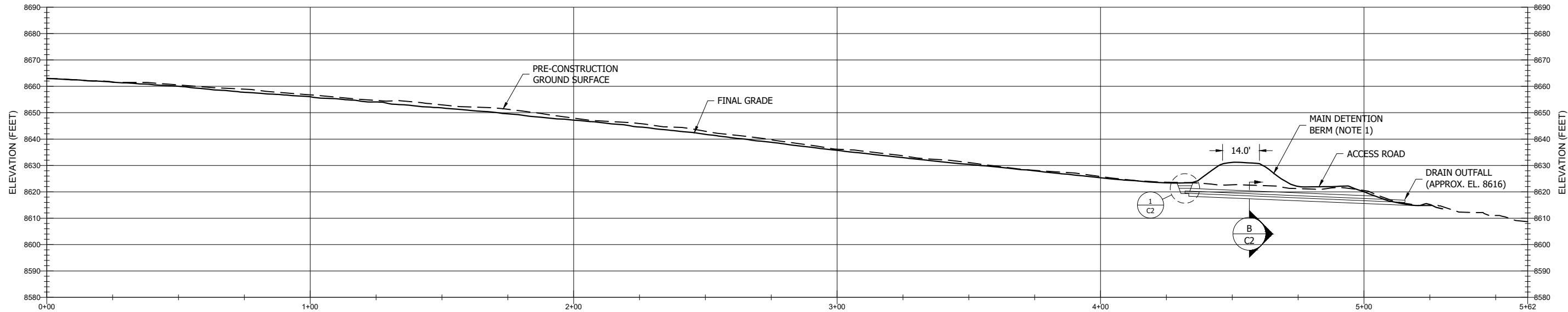
**W. W. WHEELER & ASSOCIATES, INC.**  
Water Resources Engineers

3700 S. INCA STREET  
ENGLEWOOD, CO 80110-3405  
303-761-4130  
FAX 303-761-2802

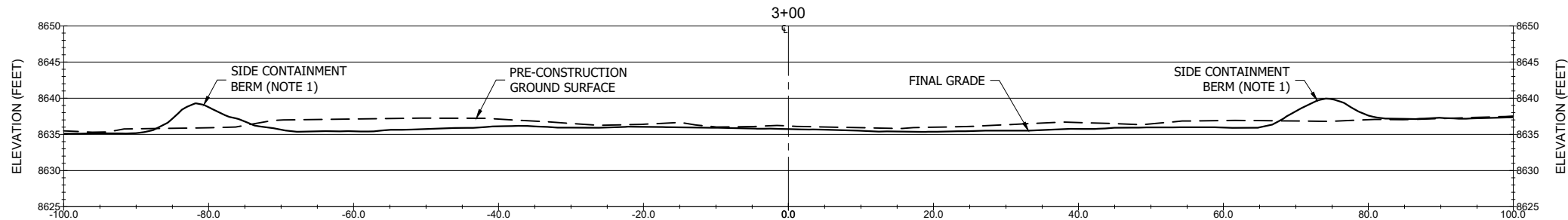
SEEP SPOILS
STORAGE FACILITY
AS-BUILT
PLAN VIEW

Climax Molybdenum Henderson Mill Parshall, CO		
MADE BY TEM	07/20	PROJECT NUMBER 1333.00
CHECKED BY SMM	07/20	DRAWING NO.
ACCEPTED BY ...		C1

R:\13001\13331\13331.01\00DRAWINGS\Seep Spoils Area\SheetFiles\13331113.002 1-15-21 09:10am trowor XREFS: Orthophoto, Index, w. photos, 2015 Site Map, Climax24x36, TEM, stamp 693d86b1-05b-4d41-8046-7425f1e83312, TEM, log, Climax, 4C.



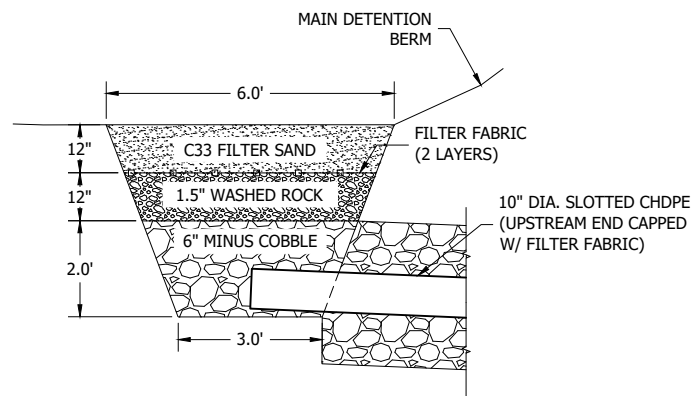
PROFILE VIEW OF SEEP SPOILS FACILITY



SEEP SPOILS STORAGE FACILITY

SECTION

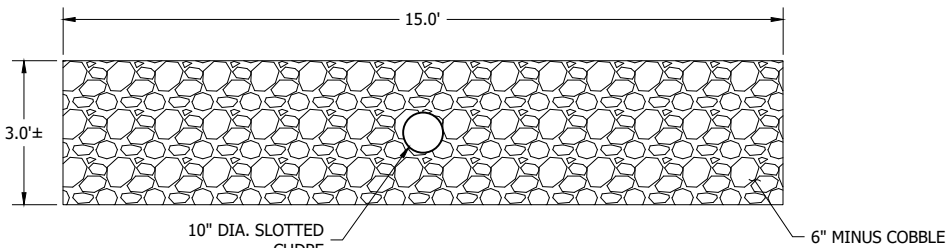
A  
C2



FILTER DRAIN

DETAIL

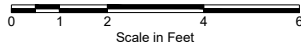
1  
C2



DRAIN OUTLET

SECTION

B  
C2



NOTES:

- BORROW MATERIALS FOR BERMS WAS SOURCED FROM SPOILS FACILITY FOOTPRINT AREA.
- AS-BUILT CONDITIONS SHOWN FROM SURVEY DATA AND BASED IN PART ON INFORMATION THAT HAS BEEN PROVIDED BY OTHERS.

REVISIONS	NO.	DATE	MADE BY	CHKD. BY	REMARKS	REFERENCE DWGS	DRAWING NO.	REFERENCE	Climax Molybdenum A Freeport-McMoRan Company	SEEP SPOILS			Climax Molybdenum Henderson Mill Parshall, CO		
	1	07/20	SAA	TEM	RECORD DRAWING					STORAGE FACILITY			MADE BY TEM	07/20	PROJECT NUMBER 1333.00
										AS-BUILT			CHECKED BY SMM	07/20	DRAWING NO.
										PROFILE, SECTIONS, AND DETAILS			ACCEPTED BY ...		C2