



*Broken Arrow
Investments, LLC
801 8th Street, Suite 130
Greeley, CO 80631*

January 18, 2021

Mr. Eric Scott
Environmental Protection Specialist
State of Colorado
Division of Reclamation, Mining, & Safety
1313 Sherman Street – Room 215
Denver, CO 80203

*RE: Broken Arrow Investments, LLC – File No. M-2008-017 Derr Pit – Summary for
January Water Level Reporting*

Dear Mr. Scott,

Broken Arrow Investments, LLC is providing this summary letter to discuss and provide information in regard to the November off-site an on-site monitor wells and provide the dewatering volumes pumped for October.

During the month of December a total of 20.68 acre-feet was pumped and discharged into the on-site recharge ponds within the Derr Pit.

AgPro was able to get the normal monthly readings/measurements on all of the off-site wells for the January readings. No trigger levels were reached for any of the off-site wells. As discussed in our technical revision letter there are some on-site wells that are being removed due to the slurry wall construction and those wells have been non-accessible. Most of on-site monitor wells saw a small decrease in the elevation of the water levels. The water level elevations in the monitor wells on the Phase 1-4 portion of the pit went up on the south side by 0.05 feet and down on the north side by 1.04 feet. The drop was due to locations where dewatering pumps have been set to help keep the water level lower around the slurry wall construction and the increase was where the slurry wall is getting completed where minimal mounding is occurring on the north side. The slurry wall construction is approximately 90% complete and should be completed in late March. The water level elevations in the monitor wells on the upper terrace of the permit area increased by 0.48 feet for MW-14, increased by 0.82 feet for MW-15, increased by 0.35 feet for MW-16, increased by 0.13 feet for MW-17 and increased by 0.24 feet for MW-18.

Please give me a call at (970) 566-5090 or send an e-mail to discuss further.

Sincerely,

Kelly Hodge
Broken Arrow Investments, LLC

Derr Pit Monitor Well Readings

Well Designation	MW-1			MW-2		
Top of Well (ft)	4631.38			4630.91		
Ground Elevation (ft)	4629.09			4629.78		
Date	Depth to Groundwater from Top of Well (ft)	Depth to Groundwater from Ground (ft)	Elevation of Groundwater (ft)	Depth to Groundwater from Top of Well (ft)	Depth to Groundwater from Ground (ft)	Elevation of Groundwater (ft)
September 26, 2018	16.73	14.44	4614.65	17.18	16.05	4613.73
October 26, 2018	17.06	14.77	4614.32	17.06	15.93	4613.85
November 20, 2018	17.14	14.85	4614.24	17.03	15.90	4613.88
December 18, 2018	17.38	15.09	4614.00	17.03	15.90	4613.88
January 17, 2019	17.72	15.43	4613.66	17.56	16.43	4613.35
February 12, 2019	18.10	15.81	4613.28	17.95	16.82	4612.96
March 7, 2019	18.30	16.01	4613.08	18.19	17.06	4612.72
April 22, 2019	27.66	25.37	4603.72	19.06	17.93	4611.85
May 14, 2019	22.31	20.02	4609.07	28.70	27.57	4602.21
June 21, 2019	14.60	12.31	4616.78	20.28	19.15	4610.63
July 24, 2019	16.41	14.12	4614.97	20.75	19.62	4610.16
August 21, 2019	17.99	15.70	4613.39	21.11	19.98	4609.80
September 17, 2019	not read	#VALUE!	#VALUE!	22.56	21.43	4608.35
October 17, 2019	18.50	16.21	4612.88	22.18	21.05	4608.73
November 13, 2019	18.46	16.17	4612.92	23.31	22.18	4607.60
December 10, 2019	not read	#VALUE!	#VALUE!	23.30	22.17	4607.61
January 9, 2020	not read	#VALUE!	#VALUE!	23.53	22.40	4607.38
February 12, 2020	not read	#VALUE!	#VALUE!	25.04	23.91	4605.87
March 12, 2020	not read	#VALUE!	#VALUE!	21.48	20.35	4609.43
April 9, 2020	not read	#VALUE!	#VALUE!	19.75	18.62	4611.16
May 14, 2020	not read	#VALUE!	#VALUE!	19.55	18.42	4611.36
June 11, 2020	not read	#VALUE!	#VALUE!	19.81	18.68	4611.10
July 9, 2020	not read	#VALUE!	#VALUE!	19.08	17.95	4611.83
August 13, 2020	not read	#VALUE!	#VALUE!	22.17	21.04	4608.74
September 10, 2020	not read	#VALUE!	#VALUE!	19.86	18.73	4611.05
October 8, 2020	not read	#VALUE!	#VALUE!	19.99	18.86	4610.92
November 12, 2020	not read	#VALUE!	#VALUE!	24.65	23.52	4606.26
December 10, 2020	not read	#VALUE!	#VALUE!	not read	#VALUE!	#VALUE!
January 14, 2021	not read	#VALUE!	#VALUE!	not read	#VALUE!	#VALUE!

Well Readings with a "not read" indicate the well has been damaged or removed due to its location being in conflict with the slurry wall construction

Derr Pit Monitor Well Readings

Well Designation	MW-3			MW-4			MW-6		
Top of Well (ft)	4631.38			4631.63			4633.36		
Ground Elevation (ft)	4629.04			4629.27			4631.13		
Date	Depth to Groundwater from Top of Well (ft)	Depth to Groundwater from Ground (ft)	Elevation of Groundwater (ft)	Depth to Groundwater from Top of Well (ft)	Depth to Groundwater from Ground (ft)	Elevation of Groundwater (ft)	Depth to Groundwater from Top of Well (ft)	Depth to Groundwater from Ground (ft)	Elevation of Groundwater (ft)
September 26, 2018	17.87	15.53	4613.51	15.73	13.37	4615.90	15.31	13.08	4618.05
October 26, 2018	17.67	15.33	4613.71	15.38	13.02	4616.25	14.89	12.66	4618.47
November 20, 2018	17.63	15.29	4613.75	15.34	12.98	4616.29	14.78	12.55	4618.58
December 18, 2018	17.63	15.29	4613.75	15.34	12.98	4616.29	14.78	12.55	4618.58
January 17, 2019	18.16	15.82	4613.22	15.74	13.38	4615.89	15.13	12.90	4618.23
February 12, 2019	18.58	16.24	4612.80	16.11	13.75	4615.52	15.49	13.26	4617.87
March 7, 2019	18.79	16.45	4612.59	25.46	23.10	4606.17	15.74	13.51	4617.62
April 22, 2019	19.46	17.12	4611.92	17.02	14.66	4614.61	16.34	14.11	4617.02
May 14, 2019	20.22	17.88	4611.16	18.63	16.27	4613.00	17.63	15.40	4615.73
June 21, 2019	20.65	18.31	4610.73	20.40	18.04	4611.23	18.55	16.32	4614.81
July 24, 2019	20.92	18.58	4610.46	20.49	18.13	4611.14	18.61	16.38	4614.75
August 21, 2019	21.28	18.94	4610.10	20.63	18.27	4611.00	18.95	16.72	4614.41
September 17, 2019	22.57	20.23	4608.81	22.74	20.38	4608.89	19.54	17.31	4613.82
October 17, 2019	22.36	20.02	4609.02	22.27	19.91	4609.36	20.00	17.77	4613.36
November 13, 2019	23.28	20.94	4608.10	23.18	20.82	4608.45	20.30	18.07	4613.06
December 10, 2019	23.32	20.98	4608.06	23.07	20.71	4608.56	20.28	18.05	4613.08
January 9, 2020	23.63	21.29	4607.75	23.25	20.89	4608.38	20.48	18.25	4612.88
February 12, 2020	25.82	23.48	4605.56	25.90	23.54	4605.73	21.77	19.54	4611.59
March 12, 2020	22.30	19.96	4609.08	21.05	18.69	4610.58	19.72	17.49	4613.64
April 9, 2020	20.65	18.31	4610.73	19.32	16.96	4612.31	18.00	15.77	4615.36
May 14, 2020	20.40	18.06	4610.98	19.03	16.67	4612.60	17.72	15.49	4615.64
June 11, 2020	20.41	18.07	4610.97	19.28	16.92	4612.35	17.52	15.29	4615.84
July 9, 2020	19.84	17.50	4611.54	not read	#VALUE!	#VALUE!	17.23	15.00	4616.13
August 13, 2020	21.03	18.69	4610.35	not read	#VALUE!	#VALUE!	18.62	16.39	4614.74
September 10, 2020	20.43	18.09	4610.95	not read	#VALUE!	#VALUE!	17.95	15.72	4615.41
October 8, 2020	20.39	18.05	4610.99	not read	#VALUE!	#VALUE!	17.54	15.31	4615.82
November 12, 2020	23.15	20.81	4608.23	not read	#VALUE!	#VALUE!	18.26	16.03	4615.10
December 10, 2020	23.77	21.43	4607.61	not read	#VALUE!	#VALUE!	not read	#VALUE!	#VALUE!
January 14, 2021	23.72	21.38	4607.66	not read	#VALUE!	#VALUE!	not read	#VALUE!	#VALUE!

Well Readings with a "not read" indicate the well has been damaged or removed due to its location being in conflict with the slurry wall construction

Derr Pit Monitor Well Readings

Well Designation	MW-7			MW-8			MW-9		
Top of Well (ft)	4635.60			4635.24			4634.02		
Ground Elevation (ft)	4633.04			4632.76			4631.72		
Date	Depth to Groundwater from Top of Well (ft)	Depth to Groundwater from Ground (ft)	Elevation of Groundwater (ft)	Depth to Groundwater from Top of Well (ft)	Depth to Groundwater from Ground (ft)	Elevation of Groundwater (ft)	Depth to Groundwater from Top of Well (ft)	Depth to Groundwater from Ground (ft)	Elevation of Groundwater (ft)
September 26, 2018	not read	#VALUE!	#VALUE!	18.07	15.59	4617.17	15.74	13.44	4618.28
October 26, 2018	16.57	14.01	4619.03	17.79	15.31	4617.45	15.32	13.02	4618.70
November 20, 2018	16.43	13.87	4619.17	17.71	15.23	4617.53	15.21	12.91	4618.81
December 18, 2018	16.43	13.87	4619.17	17.71	15.23	4617.53	15.21	12.91	4618.81
January 17, 2019	16.75	14.19	4618.85	18.09	15.61	4617.15	15.56	13.26	4618.46
February 12, 2019	17.11	14.55	4618.49	18.44	15.96	4616.80	15.92	13.62	4618.10
March 7, 2019	17.34	14.78	4618.26	18.65	16.17	4616.59	16.13	13.83	4617.89
April 22, 2019	17.91	15.35	4617.69	19.27	16.79	4615.97	16.75	14.45	4617.27
May 14, 2019	18.71	16.15	4616.89	19.91	17.43	4615.33	25.56	23.26	4608.46
June 21, 2019	19.42	16.86	4616.18	20.73	18.25	4614.51	18.53	16.23	4615.49
July 24, 2019	19.42	16.86	4616.18	20.90	18.42	4614.34	18.77	16.47	4615.25
August 21, 2019	19.85	17.29	4615.75	21.41	18.93	4613.83	19.16	16.86	4614.86
September 17, 2019	20.38	17.82	4615.22	22.27	19.79	4612.97	19.75	17.45	4614.27
October 17, 2019	20.71	18.15	4614.89	22.51	20.03	4612.73	19.96	17.66	4614.06
November 13, 2019	21.05	18.49	4614.55	23.01	20.53	4612.23	20.28	17.98	4613.74
December 10, 2019	21.01	18.45	4614.59	22.97	20.49	4612.27	20.26	17.96	4613.76
January 9, 2020	21.23	18.67	4614.37	23.21	20.73	4612.03	20.50	18.20	4613.52
February 12, 2020	22.31	19.75	4613.29	24.46	21.98	4610.78	21.70	19.40	4612.32
March 12, 2020	20.67	18.11	4614.93	22.20	19.72	4613.04	19.75	17.45	4614.27
April 9, 2020	19.53	16.97	4616.07	20.78	18.30	4614.46	18.41	16.11	4615.61
May 14, 2020	19.12	16.56	4616.48	20.43	17.95	4614.81	18.02	15.72	4616.00
June 11, 2020	18.82	16.26	4616.78	20.29	17.81	4614.95	17.79	15.49	4616.23
July 9, 2020	18.54	15.98	4617.06	19.88	17.40	4615.36	17.56	15.26	4616.46
August 13, 2020	20.16	17.60	4615.44	21.99	19.51	4613.25	19.16	16.86	4614.86
September 10, 2020	19.30	16.74	4616.30	20.58	18.10	4614.66	18.29	15.99	4615.73
October 8, 2020	18.95	16.39	4616.65	20.30	17.82	4614.94	Broken not read	#VALUE!	#VALUE!
November 12, 2020	19.80	17.24	4615.80	21.52	19.04	4613.72	Broken not read	#VALUE!	#VALUE!
December 10, 2020	19.43	16.87	4616.17	not read	#VALUE!	#VALUE!	Broken not read	#VALUE!	#VALUE!
January 14, 2021	20.47	17.91	4615.13	not read	#VALUE!	#VALUE!	Broken not read	#VALUE!	#VALUE!

Well Readings with a "not read" indicate the well has been damaged or removed due to its location being in conflict with the slurry wall construction

Derr Pit Monitor Well Readings

Well Designation	MW-10			MW-11			MW-12		
Top of Well (ft)	4632.11			4630.46			4631.20		
Ground Elevation (ft)	4630.34			4628.05			4629.03		
Date	Depth to Groundwater from Top of Well (ft)	Depth to Groundwater from Ground (ft)	Elevation of Groundwater (ft)	Depth to Groundwater from Top of Well (ft)	Depth to Groundwater from Ground (ft)	Elevation of Groundwater (ft)	Depth to Groundwater from Top of Well (ft)	Depth to Groundwater from Ground (ft)	Elevation of Groundwater (ft)
September 26, 2018	14.75	12.98	4617.36	14.21	11.80	4616.25	16.58	14.41	4614.62
October 26, 2018	13.89	12.12	4618.22	13.89	11.48	4616.57	16.51	14.34	4614.69
November 20, 2018	14.25	12.48	4617.86	13.80	11.39	4616.66	16.49	14.32	4614.71
December 18, 2018	14.25	12.48	4617.86	13.80	11.39	4616.66	16.49	14.32	4614.71
January 17, 2019	14.60	12.83	4617.51	14.22	11.81	4616.24	16.95	14.78	4614.25
February 12, 2019	14.98	13.21	4617.13	14.58	12.17	4615.88	17.33	15.16	4613.87
March 7, 2019	24.30	22.53	4607.81	14.81	12.40	4615.65	17.54	15.37	4613.66
April 22, 2019	15.85	14.08	4616.26	15.55	13.14	4614.91	18.03	15.86	4613.17
May 14, 2019	26.60	24.83	4605.51	16.70	14.29	4613.76	27.43	25.26	4603.77
June 21, 2019	18.67	16.90	4613.44	17.87	15.46	4612.59	19.09	16.92	4612.11
July 24, 2019	18.79	17.02	4613.32	18.04	15.63	4612.42	19.62	17.45	4611.58
August 21, 2019	19.10	17.33	4613.01	18.45	16.04	4612.01	20.23	18.06	4610.97
September 17, 2019	19.87	18.10	4612.24	19.61	17.20	4610.85	21.61	19.44	4609.59
October 17, 2019	20.48	18.71	4611.63	19.79	17.38	4610.67	21.31	19.14	4609.89
November 13, 2019	20.82	19.05	4611.29	20.36	17.95	4610.10	22.43	20.26	4608.77
December 10, 2019	20.78	19.01	4611.33	20.30	17.89	4610.16	22.41	20.24	4608.79
January 9, 2020	20.95	19.18	4611.16	20.52	18.11	4609.94	22.67	20.50	4608.53
February 12, 2020	22.46	20.69	4609.65	22.41	20.00	4608.05	24.09	21.92	4607.11
March 12, 2020	19.95	18.18	4612.16	19.04	16.63	4611.42	20.78	18.61	4610.42
April 9, 2020	17.02	15.25	4615.09	17.22	14.81	4613.24	19.22	17.05	4611.98
May 14, 2020	17.30	15.53	4614.81	not read	#VALUE!	#VALUE!	not read	#VALUE!	#VALUE!
June 11, 2020	17.22	15.45	4614.89	not read	#VALUE!	#VALUE!	not read	#VALUE!	#VALUE!
July 9, 2020	not read	#VALUE!	#VALUE!	not read	#VALUE!	#VALUE!	not read	#VALUE!	#VALUE!
August 13, 2020	not read	#VALUE!	#VALUE!	not read	#VALUE!	#VALUE!	not read	#VALUE!	#VALUE!
September 10, 2020	not read	#VALUE!	#VALUE!	not read	#VALUE!	#VALUE!	not read	#VALUE!	#VALUE!
October 8, 2020	not read	#VALUE!	#VALUE!	not read	#VALUE!	#VALUE!	not read	#VALUE!	#VALUE!
November 12, 2020	not read	#VALUE!	#VALUE!	not read	#VALUE!	#VALUE!	not read	#VALUE!	#VALUE!
December 10, 2020	not read	#VALUE!	#VALUE!	not read	#VALUE!	#VALUE!	not read	#VALUE!	#VALUE!
January 14, 2021	not read	#VALUE!	#VALUE!	not read	#VALUE!	#VALUE!	not read	#VALUE!	#VALUE!

Well Readings with a "not read" indicate the well has been damaged or removed due to its location being in conflict with the slurry wall construction

Derr Pit Monitor Well Readings

Well Designation	MW-13			MW-14			MW-15		
Top of Well (ft)	4631.38			4660.59			4660.36		
Ground Elevation (ft)	4628.59			4659.55			4657.92		
Date	Depth to Groundwater from Top of Well (ft)	Depth to Groundwater from Ground (ft)	Elevation of Groundwater (ft)	Depth to Groundwater from Top of Well (ft)	Depth to Groundwater from Ground (ft)	Elevation of Groundwater (ft)	Depth to Groundwater from Top of Well (ft)	Depth to Groundwater from Ground (ft)	Elevation of Groundwater (ft)
September 26, 2018	17.42	14.63	4613.96	49.19	48.15	4611.40	41.59	39.15	4618.77
October 26, 2018	17.21	14.42	4614.17	45.97	44.93	4614.62	41.11	38.67	4619.25
November 20, 2018	17.18	14.39	4614.20	45.90	44.86	4614.69	43.01	40.57	4617.35
December 18, 2018	26.48	23.69	4604.90	45.90	44.86	4614.69	43.01	40.57	4617.35
January 17, 2019	17.70	14.91	4613.68	46.37	45.33	4614.22	41.37	38.93	4618.99
February 12, 2019	18.08	15.29	4613.30	46.75	45.71	4613.84	41.71	39.27	4618.65
March 7, 2019	18.32	15.53	4613.06	46.99	45.95	4613.60	51.07	48.63	4609.29
April 22, 2019	19.18	16.39	4612.20	47.61	46.57	4612.98	42.55	40.11	4617.81
May 14, 2019	29.09	26.30	4602.29	48.44	47.40	4612.15	43.49	41.05	4616.87
June 21, 2019	20.87	18.08	4610.51	49.02	47.98	4611.57	43.61	41.17	4616.75
July 24, 2019	21.17	18.38	4610.21	50.15	49.11	4610.44	44.31	41.87	4616.05
August 21, 2019	21.39	18.60	4609.99	49.56	48.52	4611.03	44.71	42.27	4615.65
September 17, 2019	22.97	20.18	4608.41	50.66	49.62	4609.93	45.08	42.64	4615.28
October 17, 2019	22.55	19.76	4608.83	50.65	49.61	4609.94	45.40	42.96	4614.96
November 13, 2019	23.62	20.83	4607.76	50.65	49.61	4609.94	45.64	43.20	4614.72
December 10, 2019	23.62	20.83	4607.76	51.25	50.21	4609.34	45.57	43.13	4614.79
January 9, 2020	23.87	21.08	4607.51	51.59	50.55	4609.00	45.63	43.19	4614.73
February 12, 2020	25.89	23.10	4605.49	53.60	52.56	4606.99	46.98	44.54	4613.38
March 12, 2020	21.90	19.11	4609.48	50.60	49.56	4609.99	45.42	42.98	4614.94
April 9, 2020	20.12	17.33	4611.26	49.21	48.17	4611.38	44.25	41.81	4616.11
May 14, 2020	not read	#VALUE!	#VALUE!	48.82	47.78	4611.77	43.85	41.41	4616.51
June 11, 2020	not read	#VALUE!	#VALUE!	48.69	47.65	4611.90	43.53	41.09	4616.83
July 9, 2020	not read	#VALUE!	#VALUE!	48.25	47.21	4612.34	43.38	40.94	4616.98
August 13, 2020	not read	#VALUE!	#VALUE!	49.29	48.25	4611.30	44.61	42.17	4615.75
September 10, 2020	not read	#VALUE!	#VALUE!	48.91	47.87	4611.68	44.10	41.66	4616.26
October 8, 2020	not read	#VALUE!	#VALUE!	48.68	47.64	4611.91	43.53	41.09	4616.83
November 12, 2020	not read	#VALUE!	#VALUE!	49.63	48.59	4610.96	43.72	41.28	4616.64
December 10, 2020	not read	#VALUE!	#VALUE!	49.74	48.70	4610.85	43.13	40.69	4617.23
January 14, 2021	not read	#VALUE!	#VALUE!	49.26	48.22	4611.33	42.31	39.87	4618.05

Well Readings with a "not read" indicate the well has been damaged or removed due to its location being in conflict with the slurry wall construction

Derr Pit Monitor Well Readings

Well Designation	MW-16			MW-17			MW-18		
Top of Well (ft)	4656.19			4663.63			4667.49		
Ground Elevation (ft)	4653.45			4660.53			4664.55		
Date	Depth to Groundwater from Top of Well (ft)	Depth to Groundwater from Ground (ft)	Elevation of Groundwater (ft)	Depth to Groundwater from Top of Well (ft)	Depth to Groundwater from Ground (ft)	Elevation of Groundwater (ft)	Depth to Groundwater from Top of Well (ft)	Depth to Groundwater from Ground (ft)	Elevation of Groundwater (ft)
September 26, 2018									
October 26, 2018									
November 20, 2018									
December 18, 2018									
January 17, 2019									
February 12, 2019									
March 7, 2019									
April 22, 2019									
May 14, 2019									
June 21, 2019									
July 24, 2019									
August 21, 2019	43.63	40.89	4612.56	47.00	43.90	4616.63	46.38	43.44	4621.11
September 17, 2019	44.44	41.70	4611.75	46.95	43.85	4616.68	46.52	43.58	4620.97
October 17, 2019	44.52	41.78	4611.67	46.59	43.49	4617.04	46.61	43.67	4620.88
November 13, 2019	44.87	42.13	4611.32	46.75	43.65	4616.88	46.74	43.80	4620.75
December 10, 2019	44.91	42.17	4611.28	46.80	43.70	4616.83	46.73	43.79	4620.76
January 9, 2020	45.30	42.56	4610.89	47.16	44.06	4616.47	46.95	44.01	4620.54
February 12, 2020	46.53	43.79	4609.66	47.87	44.77	4615.76	47.54	44.60	4619.95
March 12, 2020	45.22	42.48	4610.97	47.68	44.58	4615.95	47.32	44.38	4620.17
April 9, 2020	44.38	41.64	4611.81	47.31	44.21	4616.32	46.97	44.03	4620.52
May 14, 2020	43.90	41.16	4612.29	47.00	43.90	4616.63	46.63	43.69	4620.86
June 11, 2020	43.50	40.76	4612.69	46.52	43.42	4617.11	46.15	43.21	4621.34
July 9, 2020	43.33	40.59	4612.86	48.89	45.79	4614.74	46.14	43.20	4621.35
August 13, 2020	44.61	41.87	4611.58	48.41	45.31	4615.22	47.21	44.27	4620.28
September 10, 2020	44.25	41.51	4611.94	47.56	44.46	4616.07	46.85	43.91	4620.64
October 8, 2020	43.56	40.82	4612.63	46.27	43.17	4617.36	46.05	43.11	4621.44
November 12, 2020	43.85	41.11	4612.34	46.19	43.09	4617.44	46.06	43.12	4621.43
December 10, 2020	44.03	41.29	4612.16	46.22	43.12	4617.41	45.91	42.97	4621.58
January 14, 2021	43.68	40.94	4612.51	46.09	42.99	4617.54	45.67	42.73	4621.82

Well Readings with a "not read" indicate the well has been damaged or removed due to its location being in conflict with the slurry wall construction

January 18, 2021

Mr. Dave Bliss
13165 E County Line Road
Longmont, CO 80504

Dear Mr. Bliss:

AGPROfessionals' staff have been monitoring groundwater elevations on behalf of Mill Iron at your property. We perform this monitoring on the second Thursday of each month. Attached is the elevation we recorded on January 14, 2021.

Identifier	Depth to Water from Ground Surface
Bliss Irr	46.65

Has the 2-foot trigger point for two consecutive months been met?

☐ Yes

☒ No

Please find the attached tables and graphs representing the data collected to this date. Please do not hesitate to contact me regarding these activities.

Sincerely,

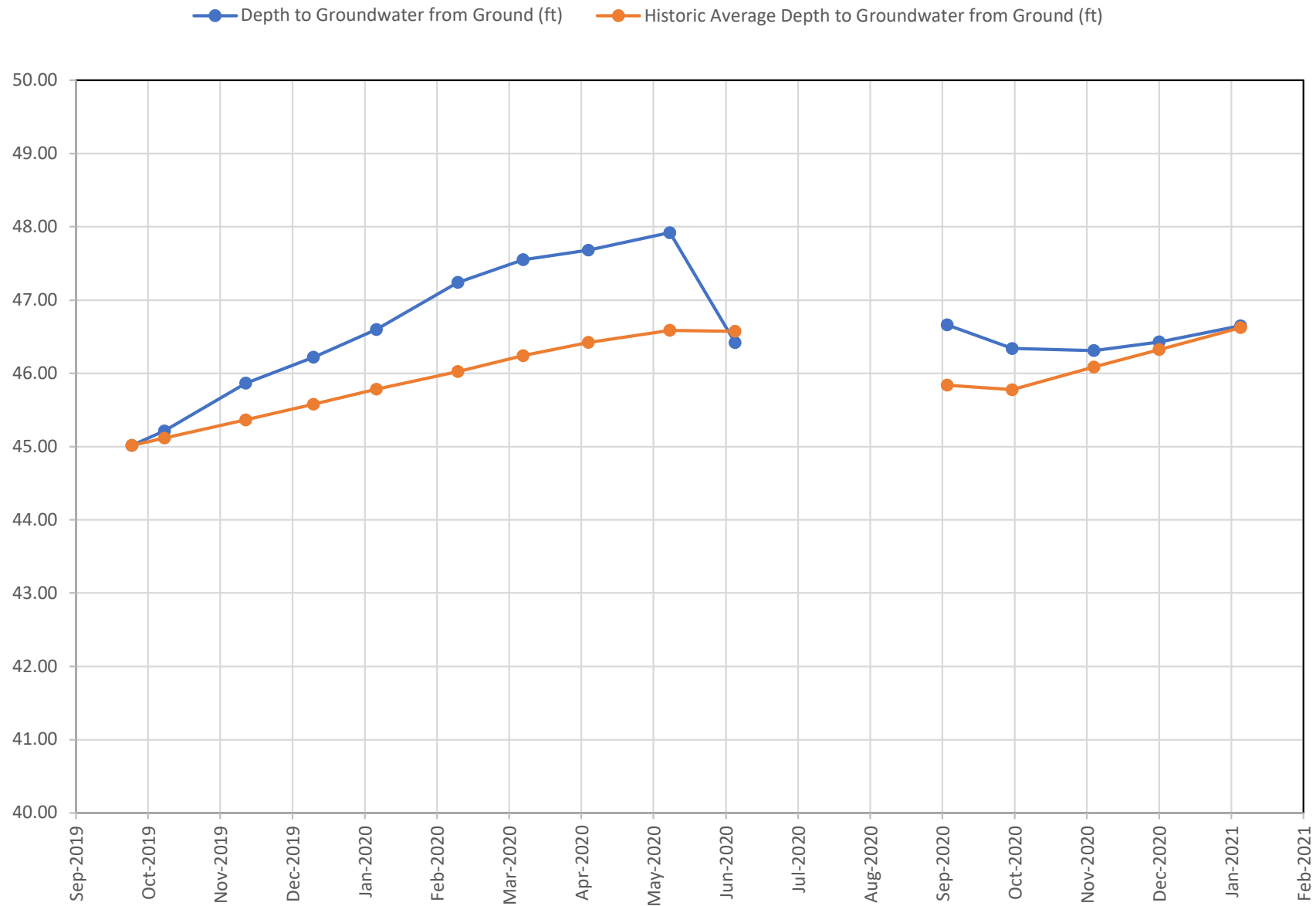


Matthew Koch, P.E.
AGPROfessionals, Environmental Engineer
970-571-4146

Derr Pit Off-Site Well Readings

Well Designation		Bliss Irr		
Date	Field Reading Depth to Groundwater (ft)	Depth to Groundwater from Ground (ft)	Historic Average Depth to Groundwater from Ground (ft)	Trigger Level of 2 feet below Historic Average Level Met (Yes or No) Start in May 2020
September 26, 2019	46.20	45.01	45.01	
October 10, 2019	46.40	45.21	45.11	
November 14, 2019	47.05	45.86	45.36	
December 13, 2019	47.24	46.22	45.58	
January 9, 2020	47.62	46.60	45.78	
February 13, 2020	48.27	47.24	46.02	
March 12, 2020	48.57	47.55	46.24	
April 9, 2020	48.70	47.68	46.42	
May 14, 2020	48.94	47.92	46.59	No
June 11, 2020	47.44	46.42	46.57	No
July 9, 2020	Pumping no read			No
August 13, 2020	Pumping no read			No
September 10, 2020	47.68	46.66	45.84	No
October 8, 2020	47.36	46.34	45.78	No
November 12, 2020	47.25	46.31	46.09	No
December 10, 2020	47.45	46.43	46.32	No
January 14, 2021	47.67	46.65	46.62	No

BLISS IRR



Notes:

- 1) Graph displays Depth to Groundwater (lower depth to groundwater reading means higher water table elevation).
- 2) Trigger point is described in Settlement Agreement.
- 3) Since Historical Data was not established until September 2020, a year-to-date running average was used to compute historical average. As of September 2020, the historical average is computed as described in Settlement Agreement.

January 18, 2021

Mr. Rocky Francis
PO Box 843
Greeley, CO 80632

Dear Mr. Francis:

AGPROfessionals' staff have been monitoring groundwater elevations on behalf of Mill Iron at your property. We perform this monitoring on the second Thursday of each month. Attached are the elevations we recorded on January 14, 2021.

Identifier	Depth to Water from Ground Surface
Francis #1 Stock	13.88
Francis #2 Irr	12.17
Francis #3 Dom	14.31

Has the 2-foot trigger point for two consecutive months been met?

☐ Yes

☒ No

Please find the attached tables and graphs representing the data collected to this date. Please do not hesitate to contact me regarding these activities.

Sincerely,



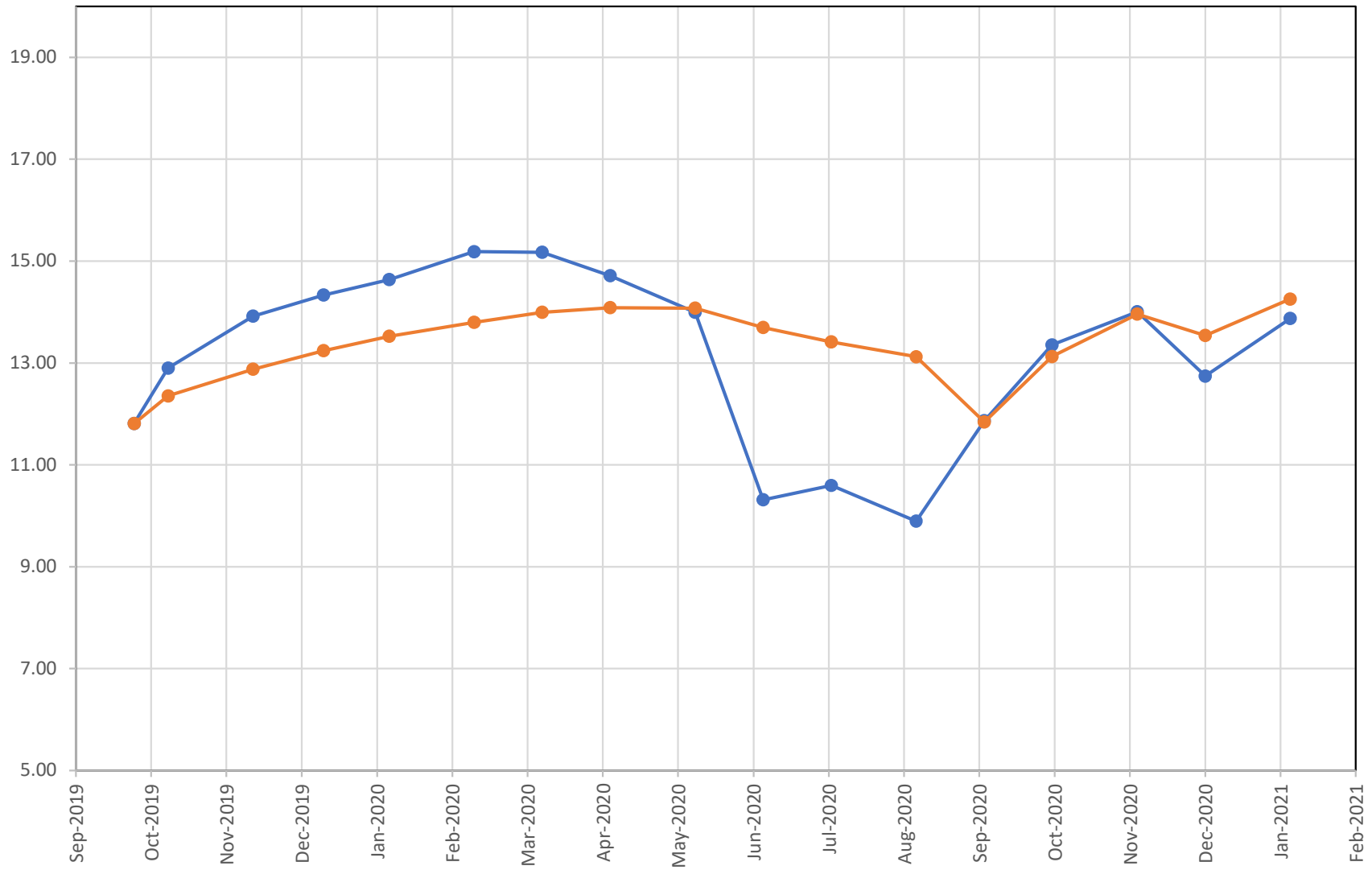
Matthew Koch, P.E.
AGPROfessionals, Environmental Engineer
970-571-4146

Derr Pit Off-Site Well Readings

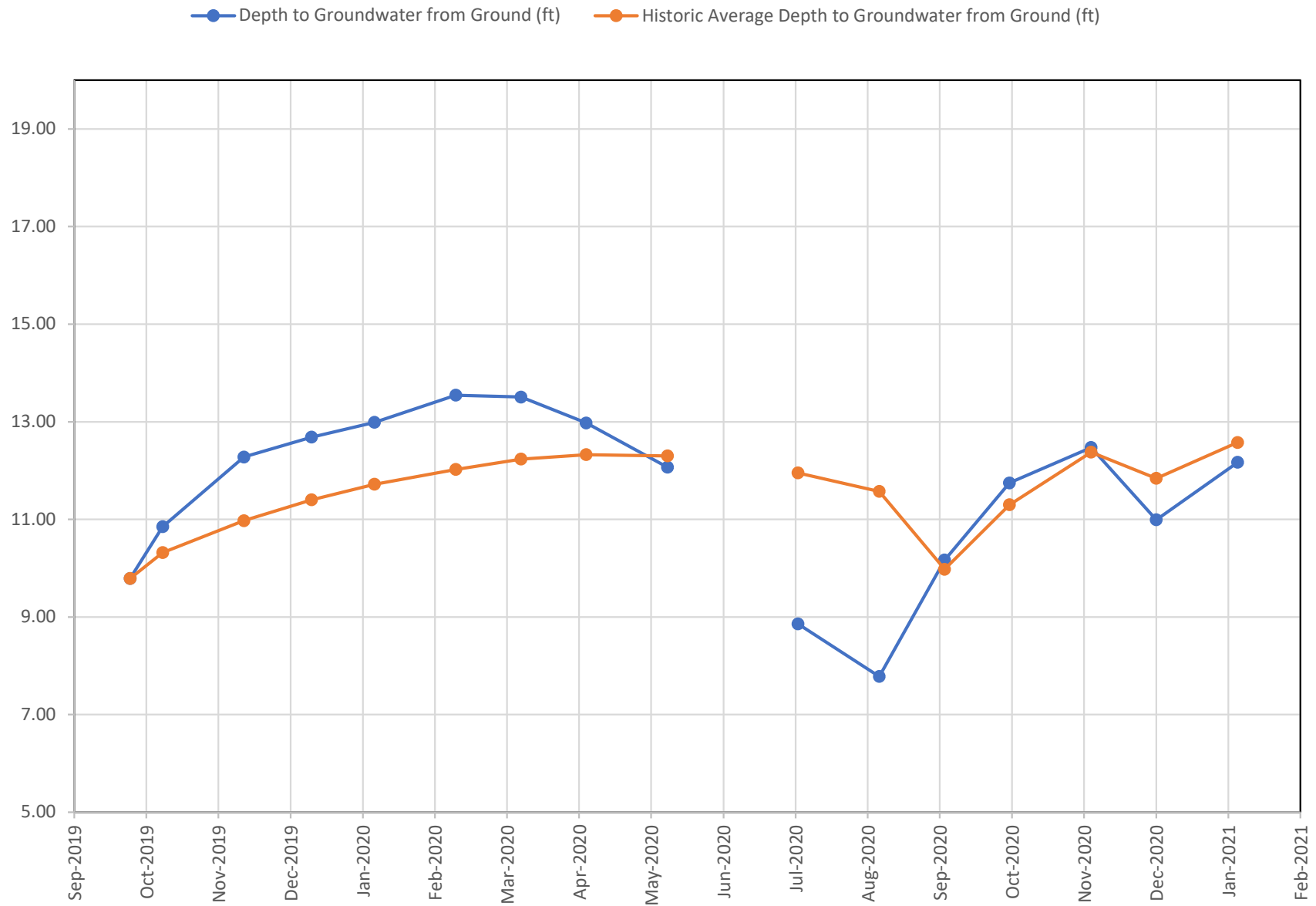
[illegible]

FRANCIS #1 STOCK

● Depth to Groundwater from Ground (ft) ● Historic Average Depth to Groundwater from Ground (ft)



FRANCIS #2 IRR

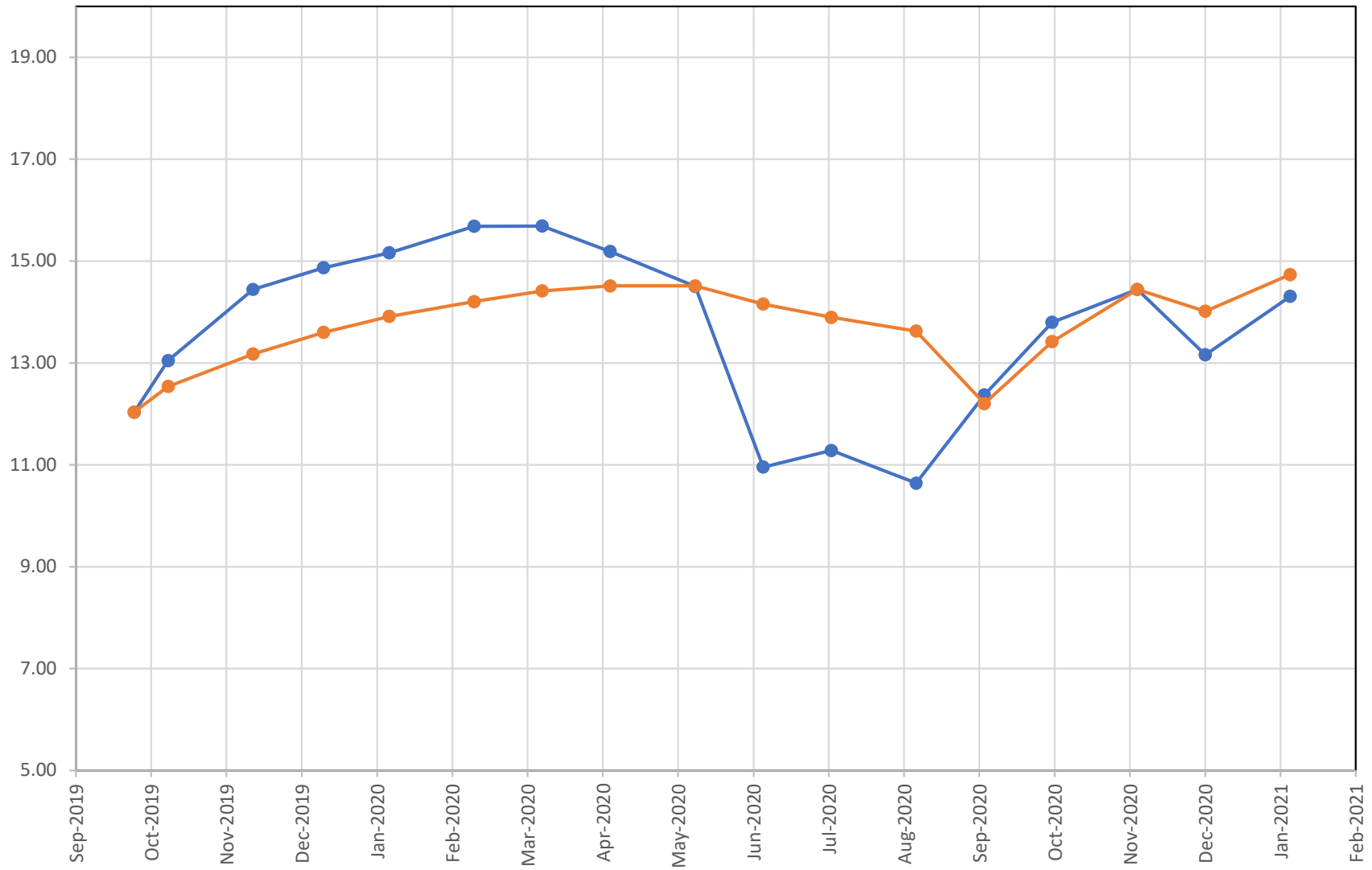


Notes:

- 1) Graph displays Depth to Groundwater (lower depth to groundwater reading means higher water table elevation).
- 2) Trigger point is described in Settlement Agreement.
- 3) Since Historical Data was not established until September 2020, a year-to-date running average was used to compute historical average. As of September 2020, the historical average is computed as described in Settlement Agreement.

FRANCIS #3 DOM

● Depth to Groundwater from Ground (ft) ● Historic Average Depth to Groundwater from Ground (ft)



January 18, 2021

Mr. Brian Harrell
288 1st Ave
Greeley, CO 80631

Dear Mr. Harrell:

AGPROfessionals' staff have been monitoring groundwater elevations on behalf of Mill Iron at your property. We perform this monitoring on the second Thursday of each month. Attached are the elevations we recorded on January 14, 2021.

Identifier	Depth to Water from Ground Surface
Harrell #1 Dom	10.45
Harrell #2 Irr	9.75

Has the 2-foot trigger point for two consecutive months been met?

☐ Yes

☒ No

Please find the attached tables and graphs representing the data collected to this date. Please do not hesitate to contact me regarding these activities.

Sincerely,



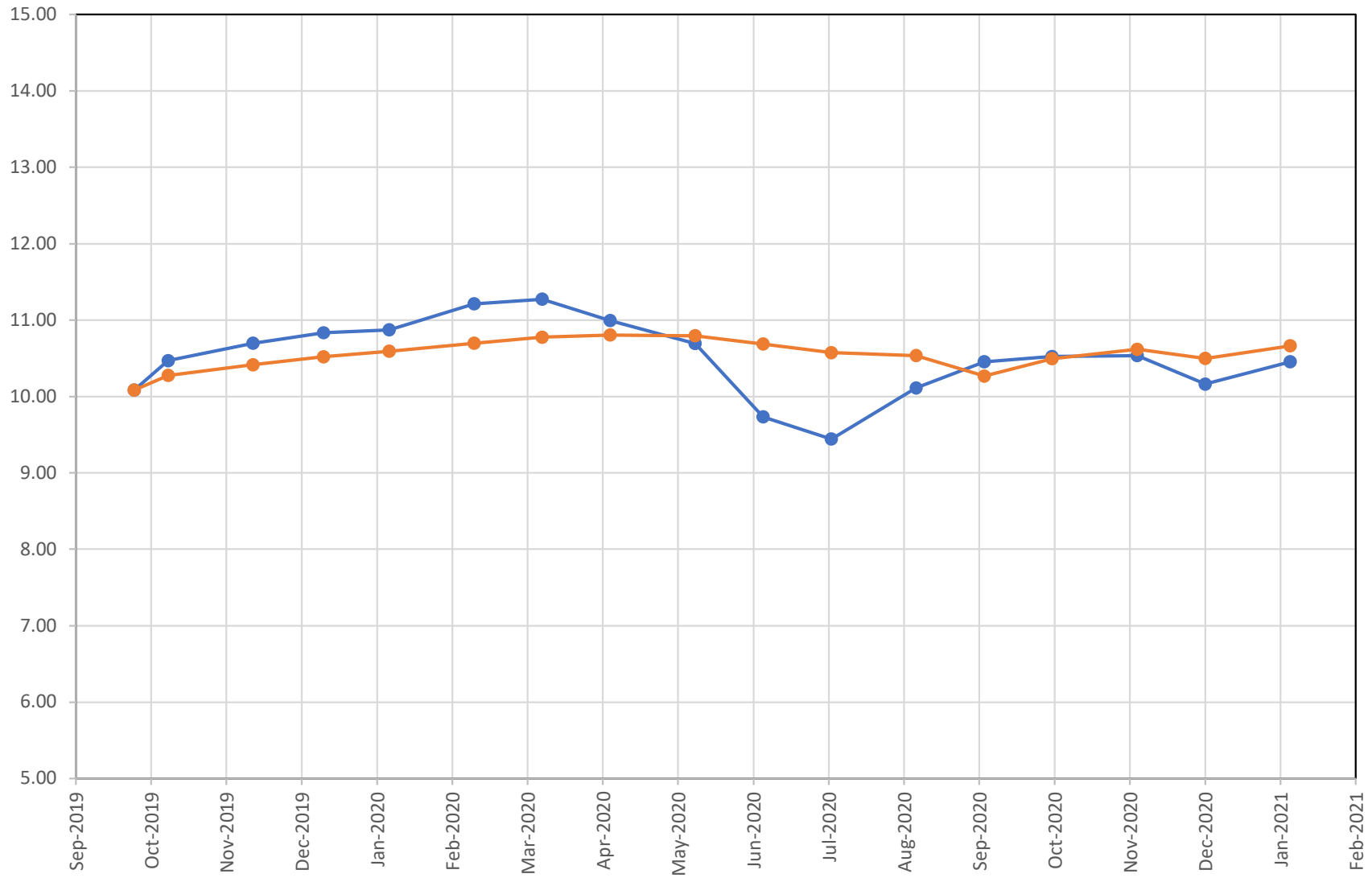
Matthew Koch, P.E.
AGPROfessionals, Environmental Engineer
970-571-4146

Derr Pit Off-Site Well Readings

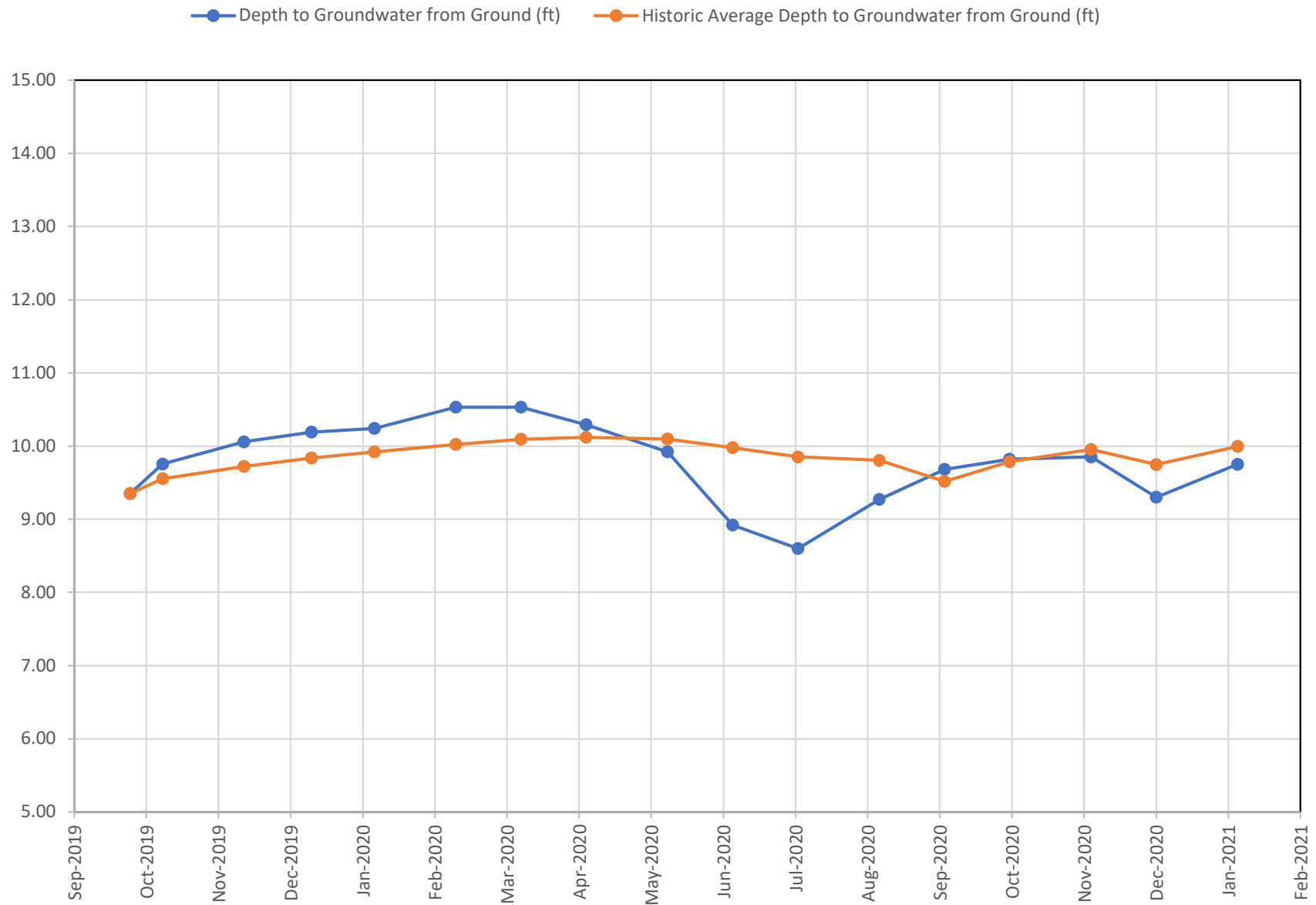
Well Designation	Harrell #1 Dom				Harrell #2 Irr			
Date	Field Reading Depth to Groundwater (ft)	Depth to Groundwater from Ground (ft)	Historic Average Depth to Groundwater from Ground (ft)	Trigger Level of 2 feet below Historic Average Level Met (Yes or No) Start in May 2020	Field Reading Depth to Groundwater (ft)	Depth to Groundwater from Ground (ft)	Historic Average Depth to Groundwater from Ground (ft)	Trigger Level of 2 feet below Historic Average Level Met (Yes or No) Start in May 2020
September 26, 2019	11.25	10.08	10.08		10.08	9.35	9.35	
October 10, 2019	11.80	10.47	10.28		10.65	9.76	9.55	
November 14, 2019	12.03	10.70	10.42		10.95	10.06	9.72	
December 13, 2019	12.00	10.83	10.52		10.92	10.19	9.84	
January 9, 2020	12.04	10.87	10.59		10.97	10.24	9.92	
February 13, 2020	12.38	11.21	10.69		11.26	10.53	10.02	
March 12, 2020	12.44	11.27	10.78		11.26	10.53	10.09	
April 9, 2020	12.16	10.99	10.80		11.02	10.29	10.12	
May 14, 2020	11.86	10.69	10.79	No	10.65	9.92	10.10	No
June 11, 2020	10.90	9.73	10.69	No	9.65	8.92	9.98	No
July 9, 2020	10.61	9.44	10.57	No	9.33	8.60	9.85	No
August 13, 2020	11.28	10.11	10.53	No	10.00	9.27	9.81	No
September 10, 2020	11.62	10.45	10.27	No	10.41	9.68	9.52	No
October 8, 2020	11.69	10.52	10.50	No	10.55	9.82	9.79	No
November 12, 2020	11.70	10.53	10.62	No	10.58	9.85	9.95	No
December 10, 2020	11.33	10.16	10.50	No	10.03	9.30	9.75	No
January 14, 2021	11.62	10.45	10.66	No	10.48	9.75	10.00	No

HARRELL #1 DOM

● Depth to Groundwater from Ground (ft) ● Historic Average Depth to Groundwater from Ground (ft)



HARRELL #2 IRR



Notes:

- 1) Graph displays Depth to Groundwater (lower depth to groundwater reading means higher water table elevation).
- 2) Trigger point is described in Settlement Agreement.
- 3) Since Historical Data was not established until September 2020, a year-to-date running average was used to compute historical average. As of September 2020, the historical average is computed as described in Settlement Agreement.

January 18, 2021

Ms. Dixie Hoffner
30300 WCR 57
Gill, CO 80624

Dear Ms. Hoffner:

AGPROfessionals' staff have been monitoring groundwater elevations on behalf of Mill Iron at your property. We perform this monitoring on the second Thursday of each month. Attached are the elevations we recorded on January 14, 2021.

Identifier	Depth to Water from Ground Surface
Hoffner #1 Dom	44.14
Hoffner #2 Irr	48.32

Has the 2-foot trigger point for two consecutive months been met?

- ☐ Yes
☒ No

Please find the attached tables and graphs representing the data collected to this date. Please do not hesitate to contact me regarding these activities.

Sincerely,



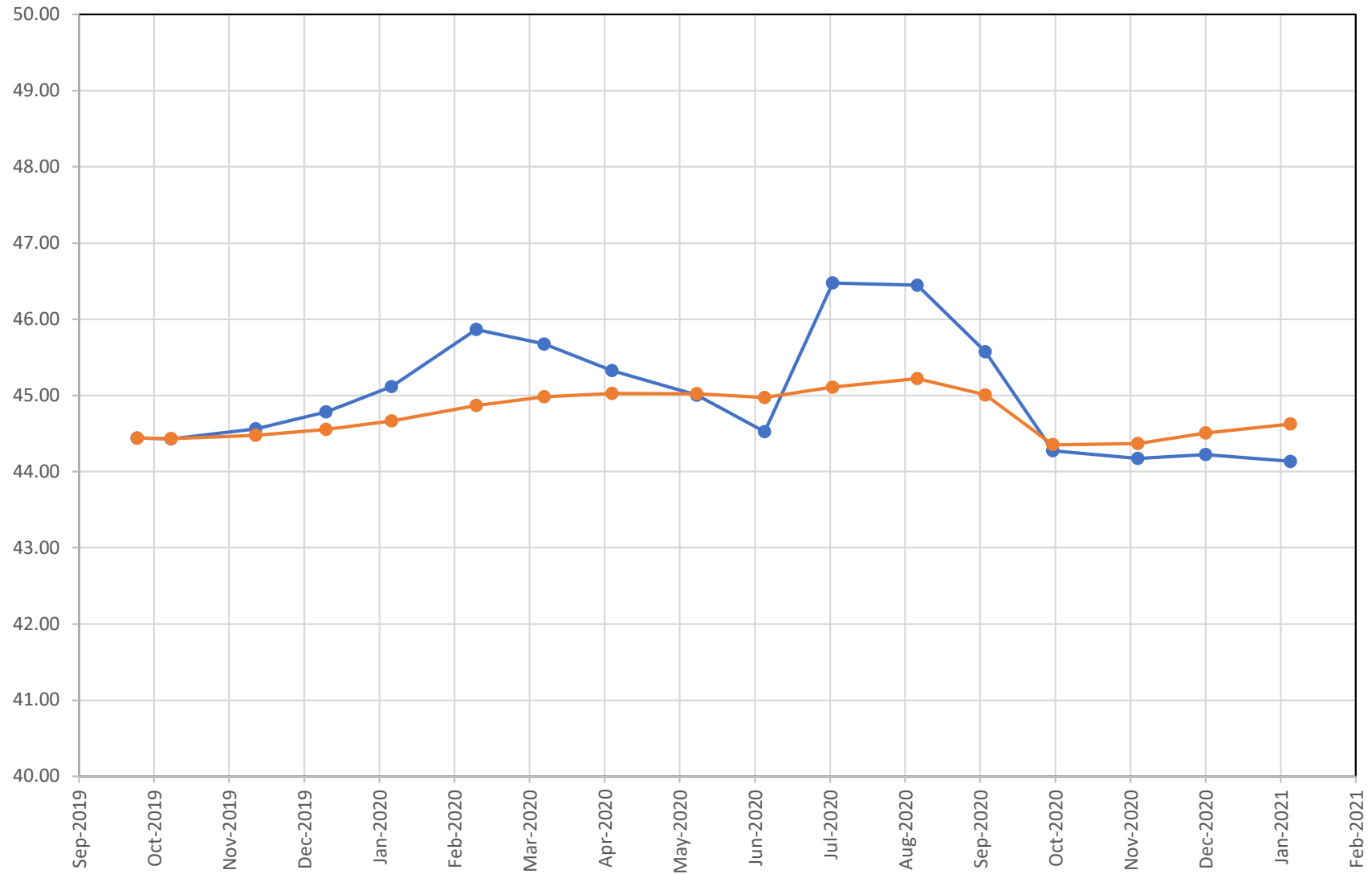
Matthew Koch, P.E.
AGPROfessionals, Environmental Engineer
970-571-4146

Derr Pit Off-Site Well Readings

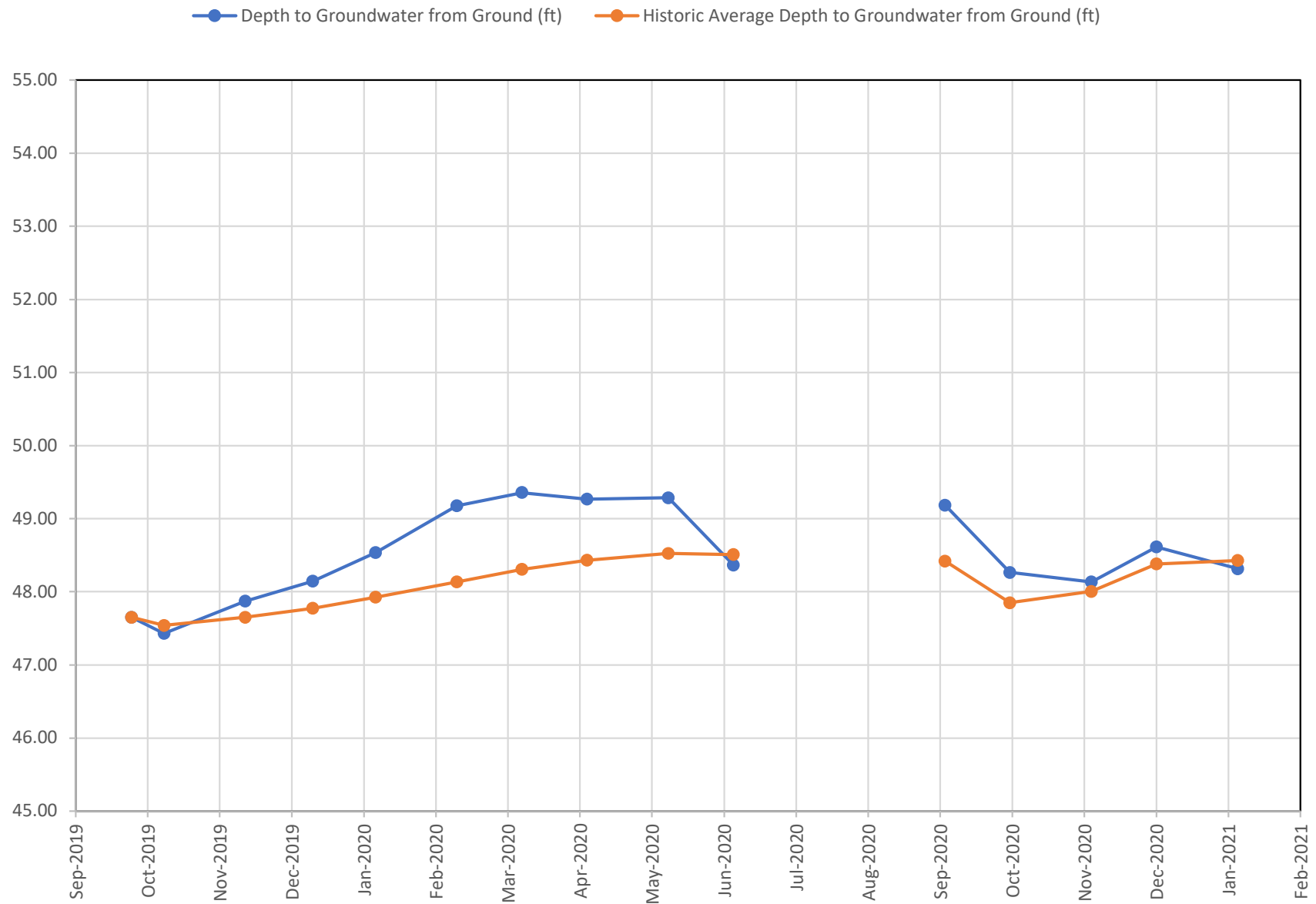
Well Designation	Hoffner #1 Dom				Hoffner #2 Irr			
Date	Field Reading Depth to Groundwater (ft)	Depth to Groundwater from Ground (ft)	Historic Average Depth to Groundwater from Ground (ft)	Trigger Level of 2 feet below Historic Average Level Met (Yes or No) Start in May 2020	Field Reading Depth to Groundwater (ft)	Depth to Groundwater from Ground (ft)	Historic Average Depth to Groundwater from Ground (ft)	Trigger Level of 2 feet below Historic Average Level Met (Yes or No) Start in May 2020
September 26, 2019	45.48	44.44	44.44		48.67	47.65	47.65	
October 10, 2019	45.47	44.43	44.44		48.45	47.43	47.54	
November 14, 2019	45.60	44.56	44.48		48.89	47.87	47.65	
December 13, 2019	45.66	44.79	44.55		49.00	48.15	47.77	
January 9, 2020	45.99	45.12	44.67		49.39	48.54	47.93	
February 13, 2020	46.74	45.87	44.87		50.03	49.18	48.14	
March 12, 2020	46.55	45.68	44.98		50.21	49.36	48.31	
April 9, 2020	46.20	45.33	45.02		50.12	49.27	48.43	
May 14, 2020	45.88	45.01	45.02	No	50.14	49.29	48.52	No
June 11, 2020	45.40	44.53	44.97	No	49.22	48.37	48.51	No
July 9, 2020	47.35	46.48	45.11	No	Pumping no read			No
August 13, 2020	47.32	46.45	45.22	No	Pumping no read			No
September 10, 2020	46.45	45.58	45.01	No	50.04	49.19	48.42	No
October 8, 2020	45.15	44.28	44.35	No	49.12	48.27	47.85	No
November 12, 2020	45.05	44.18	44.37	No	48.99	48.14	48.00	No
December 10, 2020	45.10	44.23	44.51	No	49.47	48.62	48.38	No
January 14, 2021	45.01	44.14	44.63	No	49.17	48.32	48.43	No

HOFFNER #1 DOM

—●— Depth to Groundwater from Ground (ft) —●— Historic Average Depth to Groundwater from Ground (ft)



HOFFNER #2 IRR



Notes:

- 1) Graph displays Depth to Groundwater (lower depth to groundwater reading means higher water table elevation).
- 2) Trigger point is described in Settlement Agreement.
- 3) Since Historical Data was not established until September 2020, a year-to-date running average was used to compute historical average. As of September 2020, the historical average is computed as described in Settlement Agreement.

January 18, 2021

Mr. Jim Koehler
1001 E C St.
Greeley, CO 80631

Dear Mr. Koehler:

AGPROfessionals' staff have been monitoring groundwater elevations on behalf of Mill Iron at your property. We perform this monitoring on the second Thursday of each month. Attached are the elevations we recorded on January 14, 2021.

Identifier	Depth to Water from Ground Surface
Koehler #1 Dom (Vault)	47.89
Koehler #2 stock (Vault)	46.87
Koehler #3 Irr	49.48

Has the 2-foot trigger point for two consecutive months been met?

- ☐ Yes
☒ No

Please find the attached tables and graphs representing the data collected to this date. Please do not hesitate to contact me regarding these activities.

Sincerely,



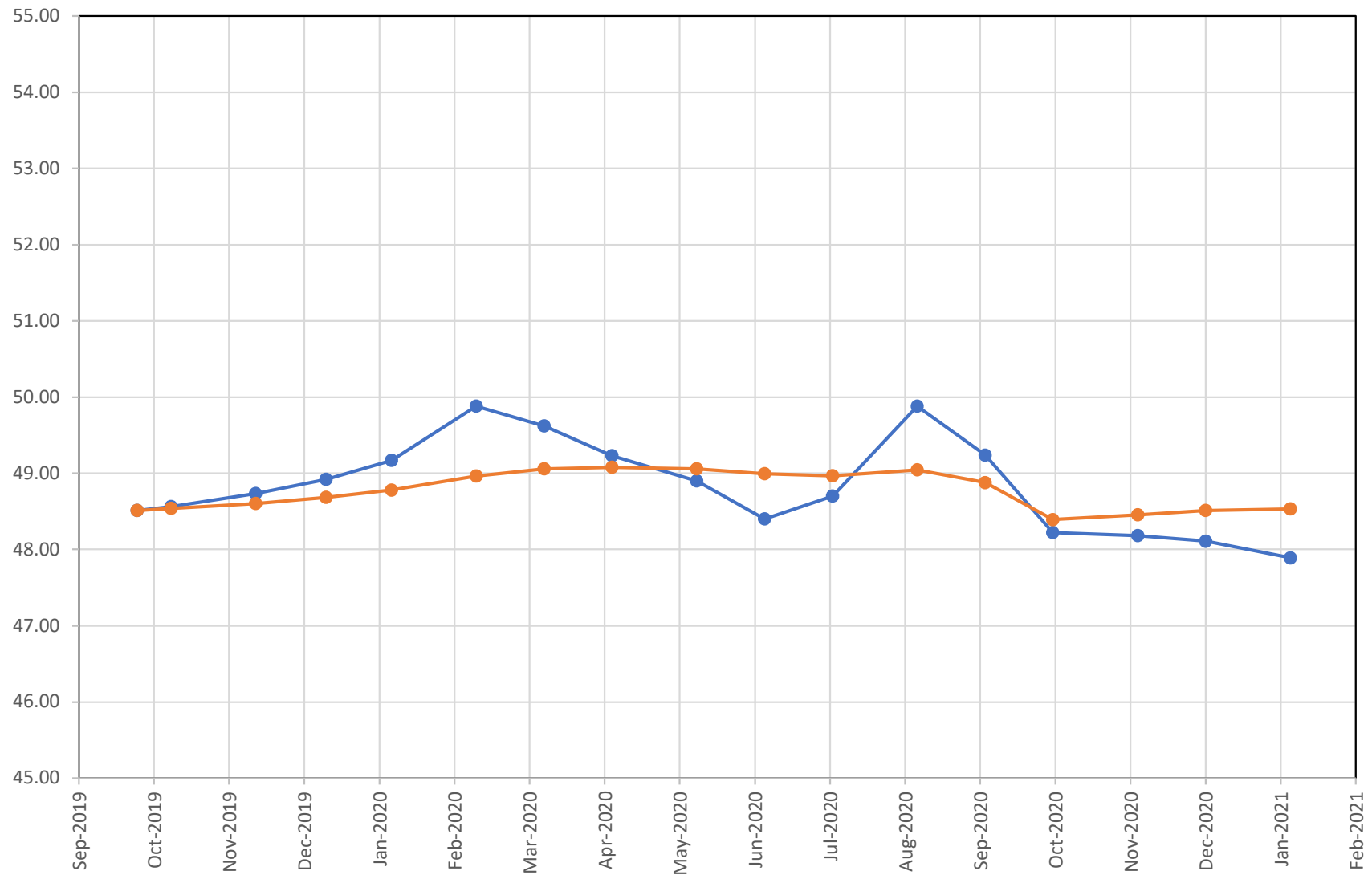
Matthew Koch, P.E.
AGPROfessionals, Environmental Engineer
970-571-4146

Derr Pit Off-Site Well Readings

[illegible]

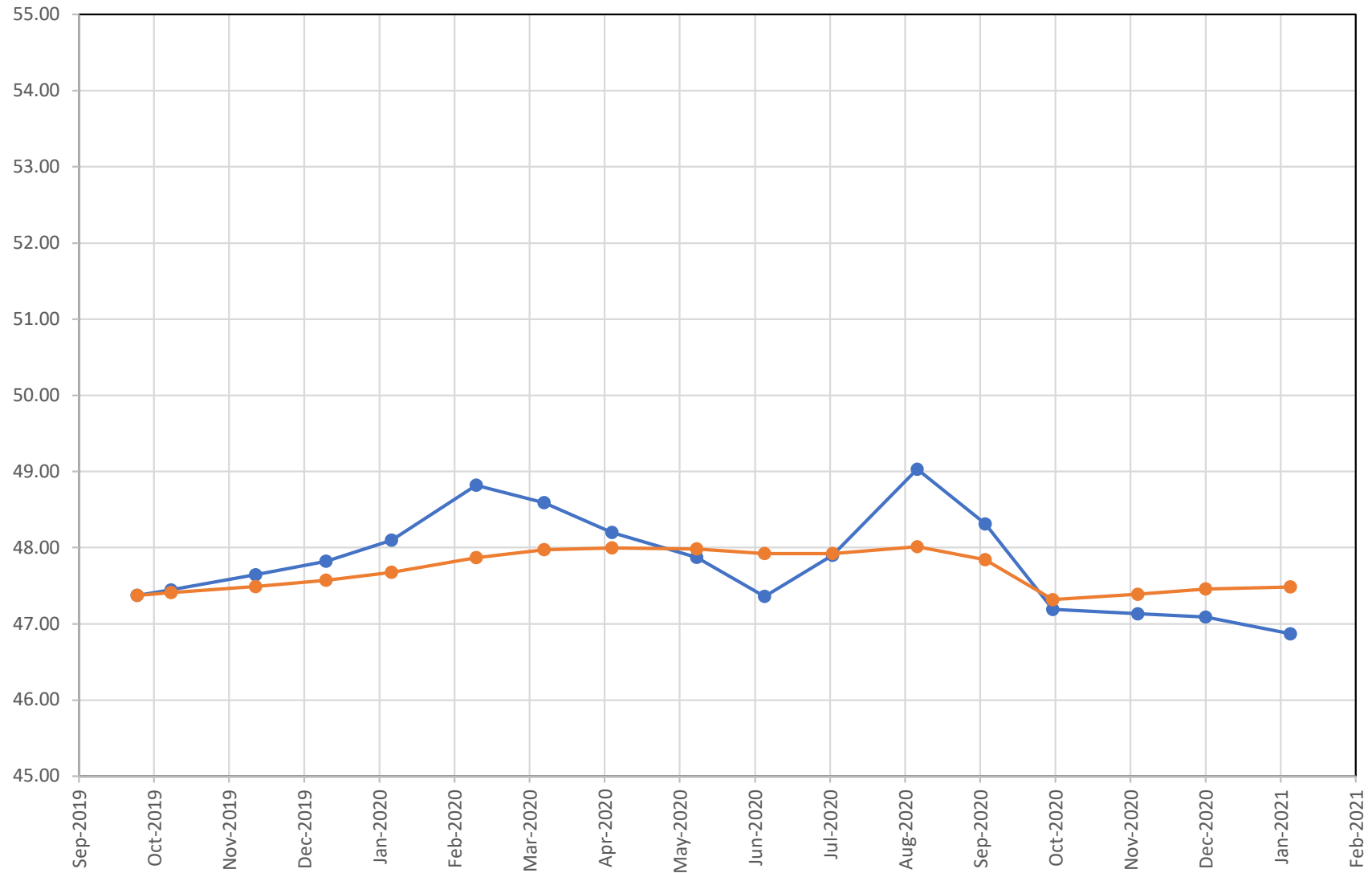
KOEHLER #1 DOM (VAULT)

—●— Depth to Groundwater from Ground (ft) —●— Historic Average Depth to Groundwater from Ground (ft)

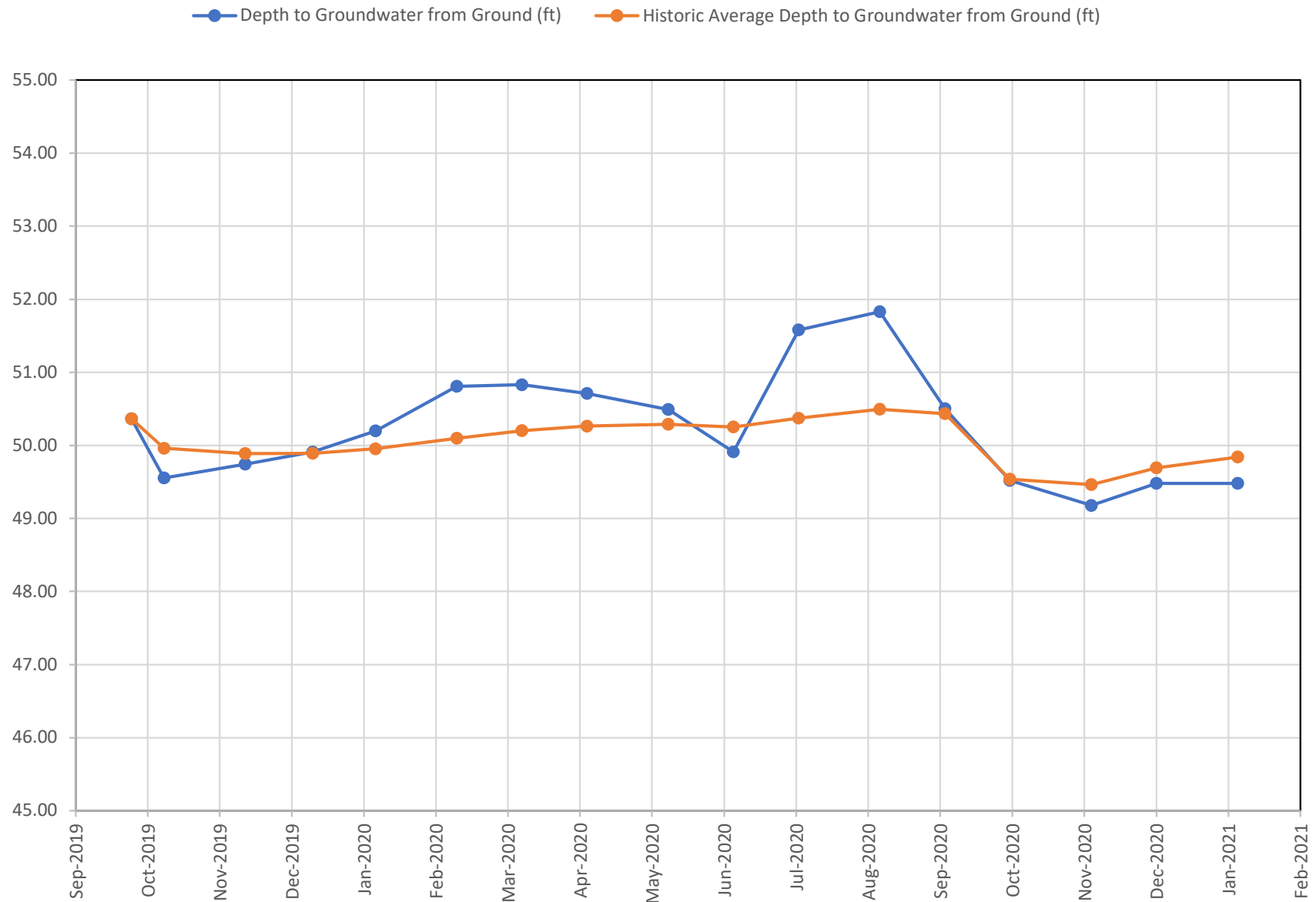


KOEHLER #2 STOCK (VAULT)

—●— Depth to Groundwater from Ground (ft) —●— Historic Average Depth to Groundwater from Ground (ft)



KOEHLER #3 IRR



Notes:

- 1) Graph displays Depth to Groundwater (lower depth to groundwater means higher water table elevation).
- 2) Trigger point is described in Settlement Agreement.
- 3) Since Historical Data was not established until September 2020, a year-to-date running average was used to compute historical average. As of September 2020, the historical average is computed as described in Settlement Agreement.

January 18, 2021

Mr. Brian Murata
29485 WCR 43
Greeley, CO 80631

Dear Mr. Murata:

AGPROfessionals' staff have been monitoring groundwater elevations on behalf of Mill Iron at your property. We perform this monitoring on the second Thursday of each month. Attached is the elevation we recorded on January 14, 2021.

Identifier	Depth to Water from Ground Surface
Murata #1 Irr	47.19

Has the 2-foot trigger point for two consecutive months been met?

- ☐ Yes
☒ No

Please find the attached tables and graphs representing the data collected to this date. Please do not hesitate to contact me regarding these activities.

Sincerely,

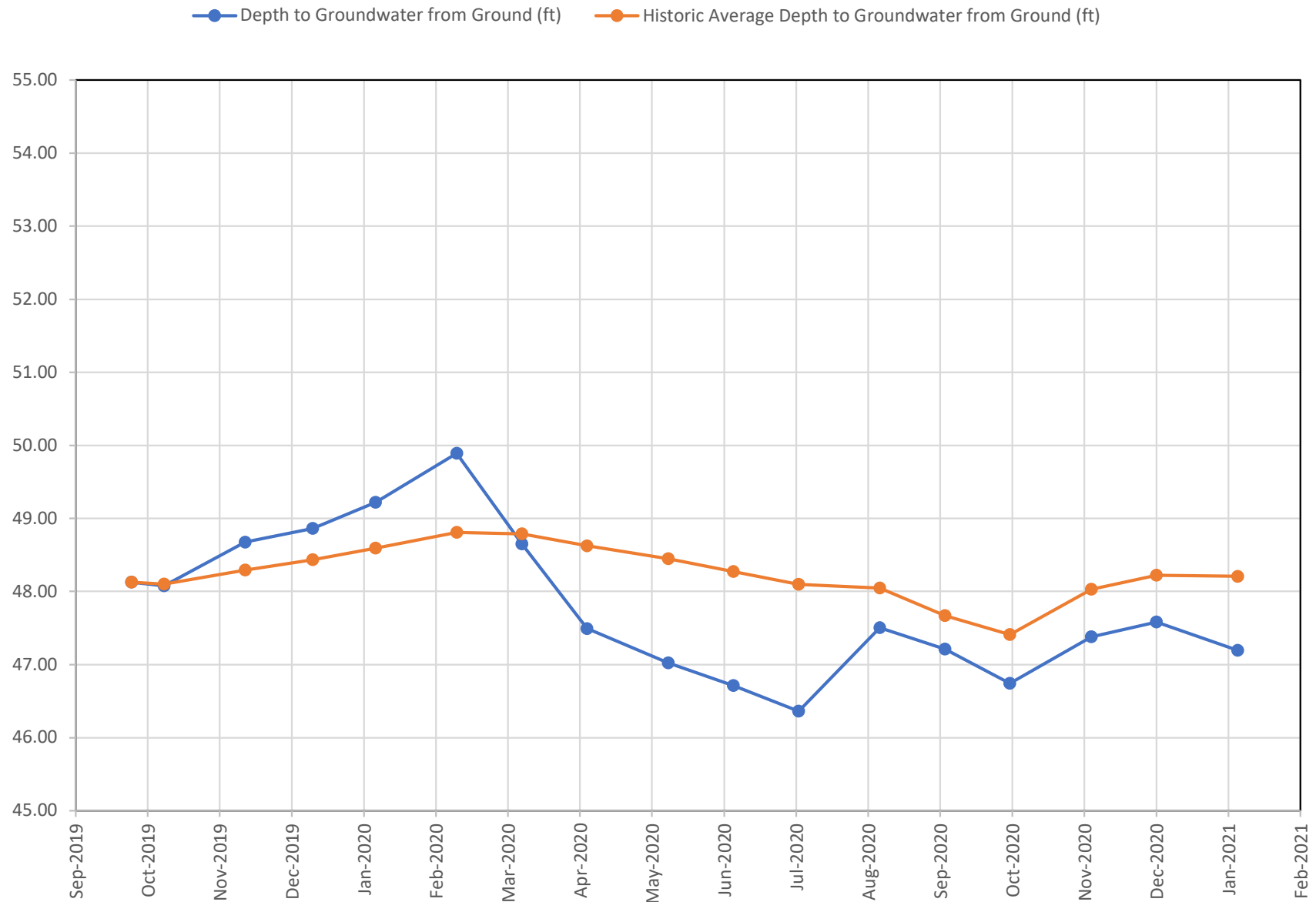


Matthew Koch, P.E.
AGPROfessionals, Environmental Engineer
970-571-4146

Derr Pit Off-Site Well Readings

Well Designation		Murata #1 Irr		
Date	Field Reading Depth to Groundwater (ft)	Depth to Groundwater from Ground (ft)	Historic Average Depth to Groundwater from Ground (ft)	Trigger Level of 2 feet below Historic Average Level Met (Yes or No) Start in May 2020
September 26, 2019	50.25	48.13	48.13	
October 10, 2019	50.20	48.08	48.10	
November 14, 2019	50.80	48.68	48.29	
December 13, 2019	50.82	48.86	48.44	
January 9, 2020	51.18	49.22	48.59	
February 13, 2020	51.85	49.89	48.81	
March 12, 2020	50.61	48.65	48.79	
April 9, 2020	49.45	47.49	48.63	
May 14, 2020	48.98	47.02	48.45	No
June 11, 2020	48.67	46.71	48.27	No
July 9, 2020	48.32	46.36	48.10	No
August 13, 2020	49.46	47.50	48.05	No
September 10, 2020	49.17	47.21	47.67	No
October 8, 2020	48.70	46.74	47.41	No
November 12, 2020	49.34	47.38	48.03	No
December 10, 2020	49.54	47.58	48.22	No
January 14, 2021	49.15	47.19	48.21	No

MURATA #1 IRR



Notes:

- 1) Graph displays Depth to Groundwater (lower depth to groundwater reading means higher water table elevation).
- 2) Trigger point is described in Settlement Agreement.
- 3) Since Historical Data was not established until September 2020, a year-to-date running average was used to compute historical average. As of September 2020, the historical average is computed as described in Settlement Agreement.

January 18, 2021

Ms. Silvia Parker
211 Balsam Avenue
Greeley, CO 80631

Dear Ms. Parker:

AGPROfessionals' staff have been monitoring groundwater elevations on behalf of Mill Iron at your property. We perform this monitoring on the second Thursday of each month. Attached is the elevation we recorded on January 14, 2021.

Identifier	Depth to Water from Ground Surface
Parker Dom (Vault)	40.82

Has the 2-foot trigger point for two consecutive months been met?

☐ Yes

☒ No

Please find the attached tables and graphs representing the data collected to this date. Please do not hesitate to contact me regarding these activities.

Sincerely,



Matthew Koch, P.E.
AGPROfessionals, Environmental Engineer
970-571-4146

ENGINEERING, PLANNING, CONSULTING & REAL ESTATE

HQ & Mailing: 3050 67th Avenue, Suite 200, Greeley, CO 80634 | 970.535.9318 office | 970.535.9854 fax

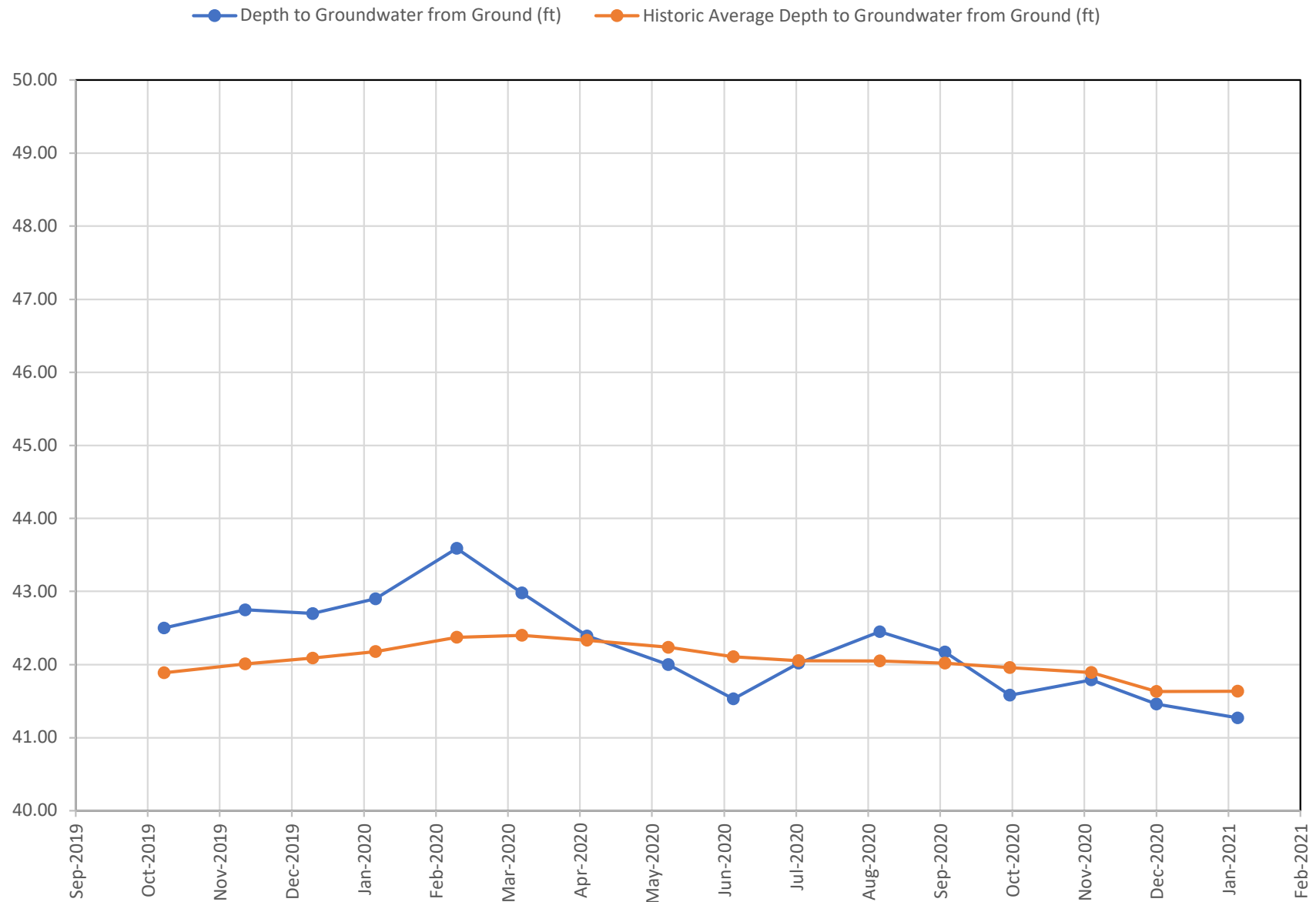
Idaho: 195 River Vista Place, #306, Twin Falls, ID 83301 | 208.595.5301

www.agpros.com

Derr Pit Off-Site Well Readings

Well Designation		Parker Dom		
Date	Field Reading Depth to Groundwater (ft)	Depth to Groundwater from Ground (ft)	Historic Average Depth to Groundwater from Ground (ft)	Trigger Level of 2 feet below Historic Average Level Met (Yes or No) Start in May 2020
September 26, 2019	no reading	no reading	no reading	
October 10, 2019	42.50	41.89	41.89	
November 14, 2019	42.75	42.14	42.01	
December 13, 2019	42.70	42.25	42.09	
January 9, 2020	42.90	42.45	42.18	
February 13, 2020	43.59	43.14	42.37	
March 12, 2020	42.98	42.53	42.40	
April 9, 2020	42.39	41.94	42.33	
May 14, 2020	42.00	41.55	42.24	No
June 11, 2020	41.53	41.08	42.11	No
July 9, 2020	42.02	41.57	42.05	No
August 13, 2020	42.45	42.00	42.05	No
September 10, 2020	42.17	41.72	42.02	No
October 8, 2020	41.58	41.13	41.96	No
November 12, 2020	41.79	41.34	41.89	No
December 10, 2020	41.46	41.01	41.63	No
January 14, 2021	41.27	40.82	41.64	No

PARKER DOM



Notes:

- 1) Graph displays Depth to Groundwater (lower depth to groundwater means higher water table elevation).
- 2) Trigger point is described in Settlement Agreement.
- 3) Since Historical Data was not established until September 2020, a year-to-date running average was used to compute historical average. As of September 2020, the historical average is computed as described in Settlement Agreement.

January 18, 2021

Ms. Diane Taylor
665 Balsam Ave
Greeley, CO 80631

Dear Ms. Taylor:

AGPROfessionals' staff have been monitoring groundwater elevations on behalf of Mill Iron at your property. We perform this monitoring on the second Thursday of each month. Attached is the elevation we recorded on January 14, 2021.

Identifier	Depth to Water from Ground Surface
Taylor Dom	20.96

Has the 2-foot trigger point for two consecutive months been met?

☐ Yes

☒ No

Please find the attached tables and graphs representing the data collected to this date. Please do not hesitate to contact me regarding these activities.

Sincerely,



Matthew Koch, P.E.
AGPROfessionals, Environmental Engineer
970-571-4146

ENGINEERING, PLANNING, CONSULTING & REAL ESTATE

HQ & Mailing: 3050 67th Avenue, Suite 200, Greeley, CO 80634 | 970.535.9318 office | 970.535.9854 fax

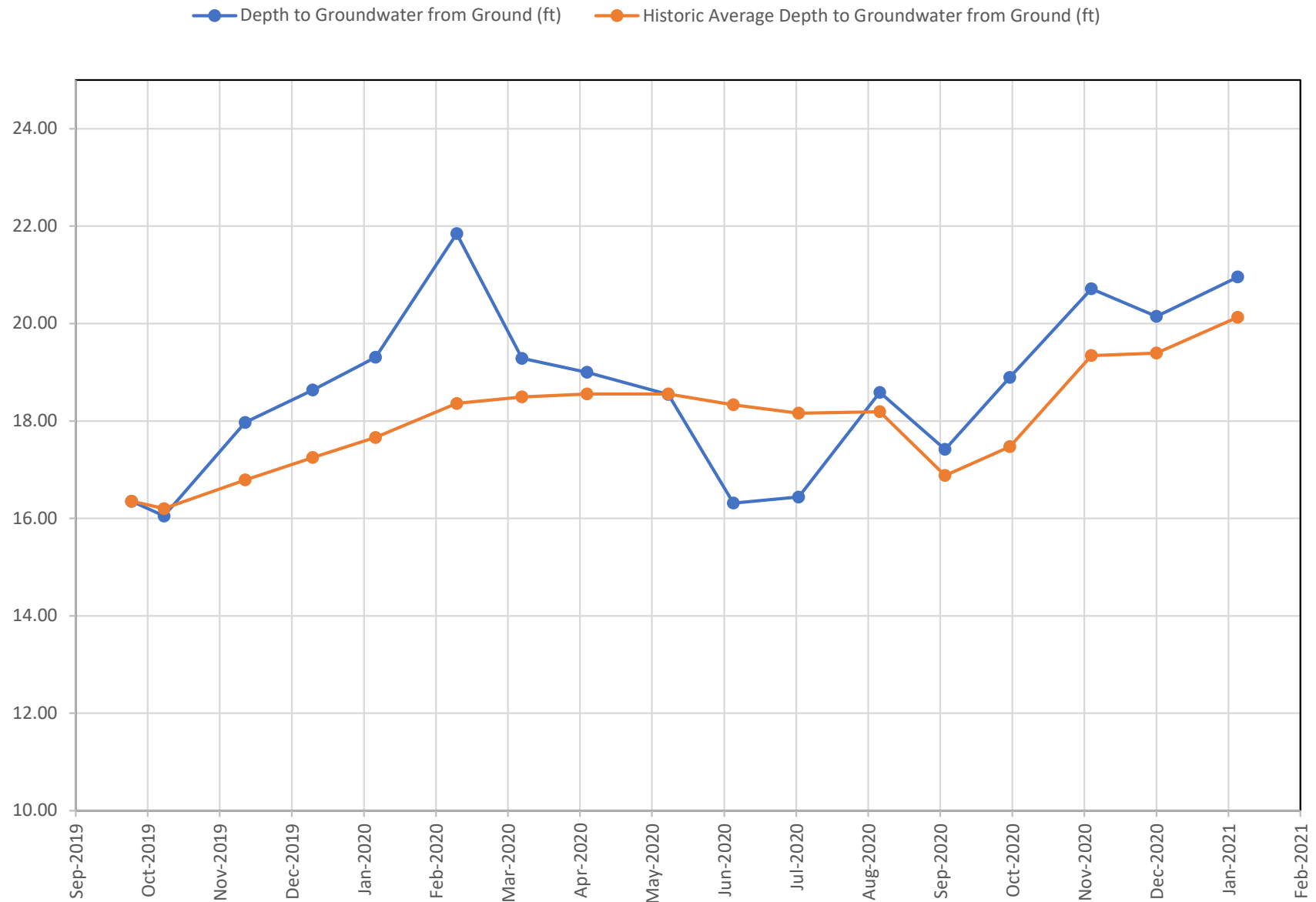
Idaho: 195 River Vista Place, #306, Twin Falls, ID 83301 | 208.595.5301

www.agpros.com

Derr Pit Off-Site Well Readings

Well Designation		Taylor Dom		
Date	Field Reading Depth to Groundwater (ft)	Depth to Groundwater from Ground (ft)	Historic Average Depth to Groundwater from Ground (ft)	Trigger Level of 2 feet below Historic Average Level Met (Yes or No) Start in May 2020
September 26, 2019	17.33	16.35	16.35	
October 10, 2019	17.03	16.05	16.20	
November 14, 2019	18.95	17.97	16.79	
December 13, 2019	19.45	18.64	17.25	
January 9, 2020	20.12	19.31	17.66	
February 13, 2020	22.66	21.85	18.36	
March 12, 2020	20.10	19.29	18.49	
April 9, 2020	19.81	19.00	18.56	
May 14, 2020	19.36	18.55	18.56	No
June 11, 2020	17.13	16.32	18.33	No
July 9, 2020	17.25	16.44	18.16	No
August 13, 2020	19.40	18.59	18.19	No
September 10, 2020	18.23	17.42	16.88	No
October 8, 2020	19.71	18.90	17.47	No
November 12, 2020	21.53	20.72	19.34	No
December 10, 2020	20.96	20.15	19.39	No
January 14, 2021	21.77	20.96	20.13	No

TAYLOR DOM



Notes:

- 1) Graph displays Depth to Groundwater (lower depth to groundwater reading means higher water table elevation).
- 2) Trigger point is described in Settlement Agreement.
- 3) Since Historical Data was not established until September 2020, a year-to-date running average was used to compute historical average. As of September 2020, the historical average is computed as described in Settlement Agreement.