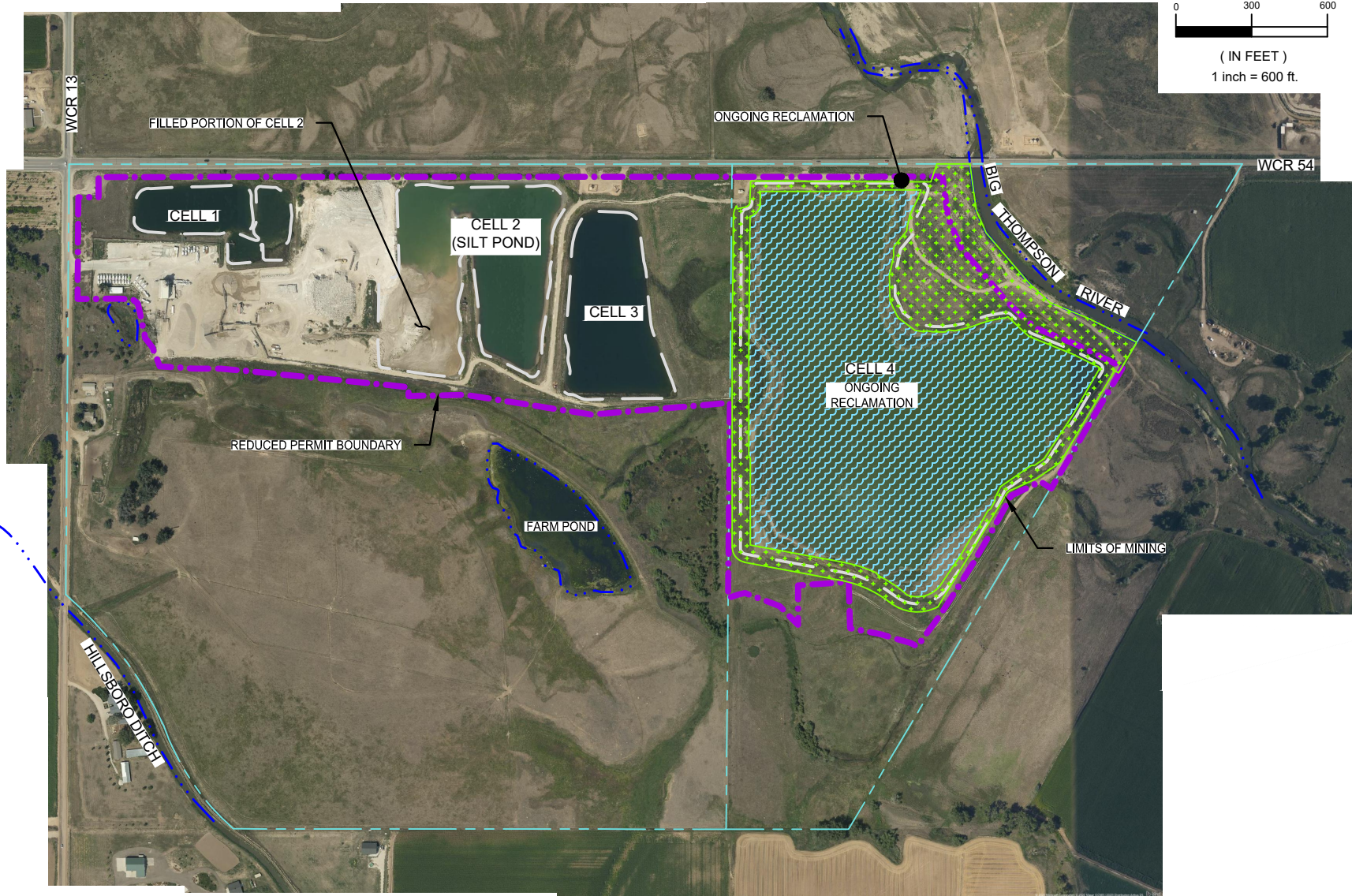


d:\projects by client\loveland ready mix\green\drms\ann rep\2021.dwg,1/6/21





#### NOTES:

1. WEED CONTROL – MOWING WEEDS AS NEEDED ON AREAS SEEDED WITH GRASS AND SPOT SPRAYING FOR THISTLE AND OTHER NOXIOUS WEEDS THROUGHOUT THE MINING BOUNDARY.
2. CELL 1 HAS COMPLETED RECLAMATION. MINING AT CELL 4 HAS BEEN COMPLETED AND IS BEING RECLAIMED. CELL 3 HAS BEEN SLOPED AND SEEDED.

#### REFERENCE:

AERIAL PHOTO PROVIDED BY BING MAPS ON 1/3/19.  
PHOTO DATE PRIOR TO DECEMBER 2020. EXACT DATE UNKNOWN.

LEGEND	
	MINING CELL BOUNDARY
	PROPERTY LINE
	DITCH/WATERWAY
	PERMIT BOUNDARY
	ONGOING RECLAMATION

FIGURE  1	DESIGNED BY:	DRF			CONSULTANTS:	 http://d2cad.com (720) 722-2396		PERMIT HOLDER:	GREEN / CROISSANT PIT 2021 ANNUAL REPORT MAP M-2001-022 LOVELAND READY MIX CONCRETE, INC. WELD COUNTY COUNTY, COLORADO	
	DATE:	1/6/21	SF							
	FILE NAME:	2019	1" = 600'							
	PROJECT NO.	160101	SHEET NO.	1 of 1						
			DATE	REVISIONS						