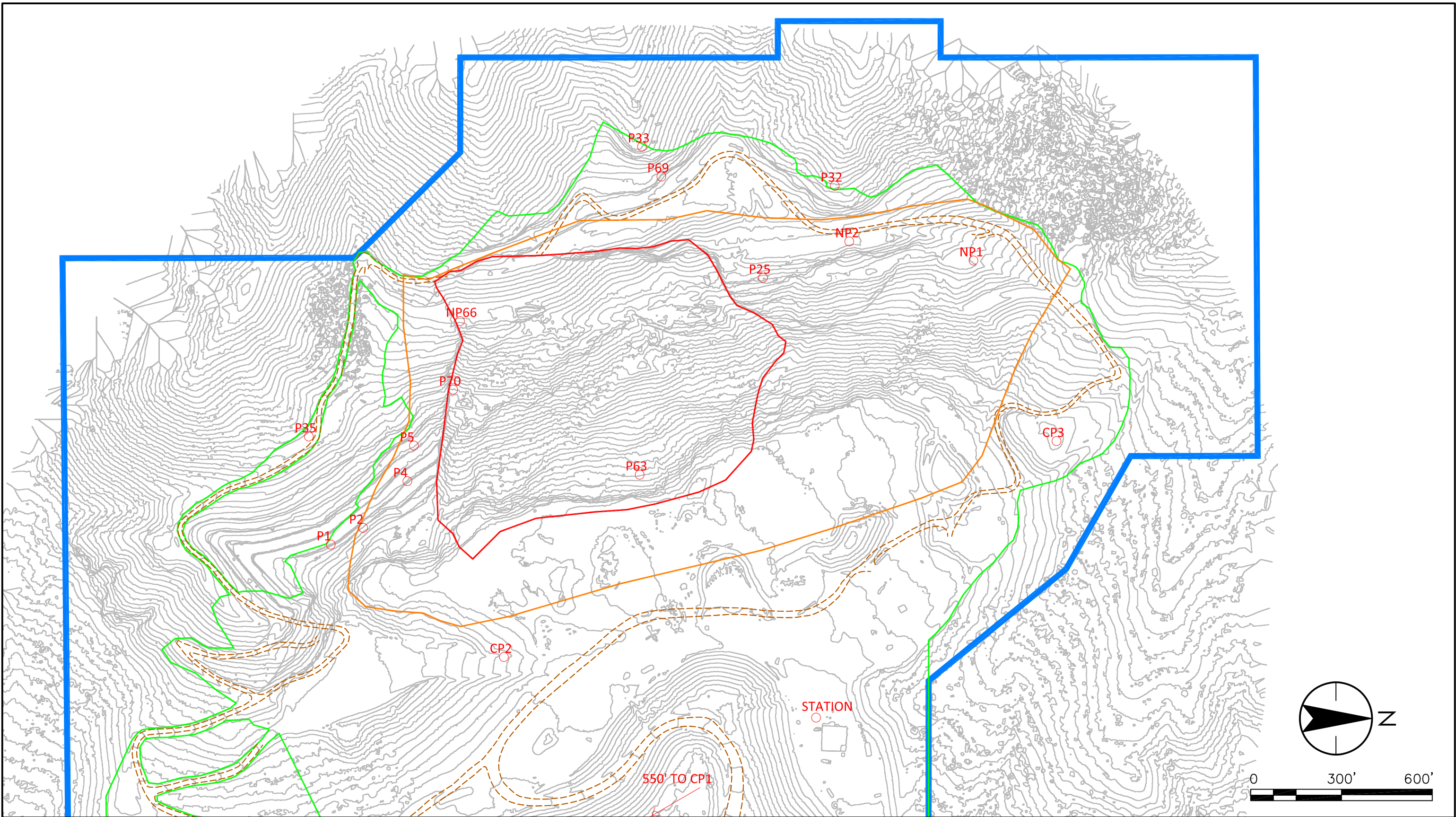


Appendix B

Prism Survey



c:\users\pkos\documents\projects\pikeview\monitoring\draft_sep12020\pikeview prisms_30oct2020.v2
2020.10.30 8:52:13 AM



Stantec Consulting Services Inc.
2000 South Colorado Boulevard Suite 2-300
Denver CO 80222-7933
Tel: (303) 758-4058
www.stantec.com

LEGEND

- Permit/Affected Lands Boundary
- Proposed Disturbance Limit
- Landslide Extent
- Buttress Fill Extent
- Existing Prism

1. GRADING AND MOVEMENT OF STATION WILL BE EXTENDED AS LONG AS POSSIBLE.
2. PRISMS WILL BE INSTALLED AS EACH BENCH IS FINISHED.
3. ALL PRISMS WILL BE RETAINED AS LONG AS POSSIBLE.
4. TOPOGRAPHY FROM SEPTEMBER 12, 2020 DRONE SURVEY.

Client/Project

CONTINENTAL MATERIALS
CORP.
PIKEVIEW QUARRY SLOPE
MONITORING

Project No.
227419041

Title

EXISTING PRISMS WITH
CURRENT SURFACE

Revision
#

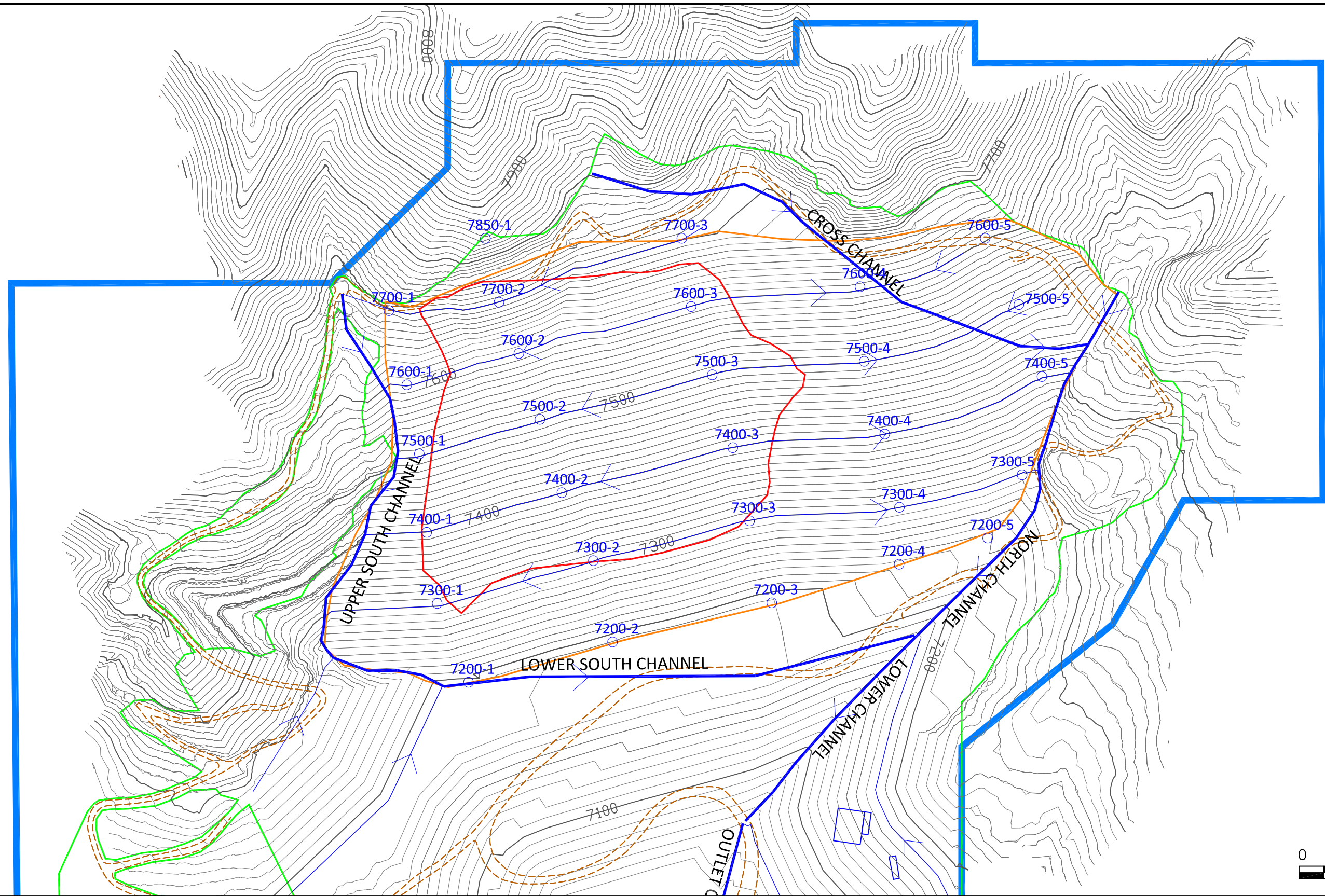
Drawn By
PK

Date
2020.10.30

Figure No.
3

c:\users\pkos\documents\projects\pikeview\monitoring\draft_sep12020\pikeview prisms_30oct2020v2

2020.10.30 8:52:45 AM



Stantec Consulting Services Inc.
2000 South Colorado Boulevard Suite 2-300
Denver CO 80222-7933
Tel: (303) 758-4058
www.stantec.com

LEGEND

- Permit/Affected Lands Boundary
- Proposed Disturbance Limit
- Landslide Extent
- Butress Fill Extent
- Proposed Prism

NOTES

1. GRADING AND MOVEMENT OF STATION WILL BE EXTENDED AS LONG AS POSSIBLE.
2. PRISMS WILL BE INSTALLED AS EACH BENCH IS FINISHED.
3. ALL PRISMS WILL BE RETAINED AS LONG AS POSSIBLE.

Client/Project

CONTINENTAL MATERIALS
CORP.
PIKEVIEW QUARRY SLOPE
MONITORING

Project No.
227419041

Title

PROPOSED PRISMS WITH
RECLAMATION SURFACE

Revision
#

Drawn By
PK

Date
2020.10.30

Figure No.
4