



FIELD WEEKLY PROGRESS REPORT

PROJECT: VALLEY LEACH FACILITY (VLF2) PHASE 2 CQA
SITE: CRIPPLE CREEK & VICTOR GOLD MINE (COLORADO)
CONTRACTOR: TEZAK HEAVY EQUIPMENT
WEEK ENDING: SATURDAY, JULY 4, 2020

REPORTING PERIOD: 06.28.2020 THROUGH 07.4.2020

Days	Sun	Mon	Tues	Wed	Thurs	Fri	Sat
Work Shifts		D	D	D	D	D	
D – DAYSHIFT		N – NIGHTSHIFT			W – WEATHER		

AMBIENT TEMPERATURE RANGES:

HIGHS: 65°F TO 76°F

LOWS: 39°F TO 52°F

WEATHER CONDITIONS:

CLOUD COVER: PARTLY CLOUDY

PRECIPITATION: RAIN ON 7/3

WIND: WIND GUSTS FROM 22 TO 35 MPH

NEWFIELDS PERSONNEL ONSITE:

Personnel	Sun	Mon	Tues	Wed	Thurs	Fri	Sat
	June 28	June 29	June 30	July 1	July 2	July 3	July 4
Julie Pfeiffer		PR	PR	PR	PR		
Tyler Wendlandt		LS	LS	LS	LS	LS	
Taylor Thompson		GT	GT	GT	GT	GT	
Benjamin Melly		LG	LG	LG	LG	LG	
Dylan Clark		LT	LT	LT	LT	LT	
William Owens		ST	ST	ST	ST		
Jacob Sweezy		ST	ST	ST	ST	ST	
Ryan Hunt		ST	ST	ST	ST	ST	
Stephen Agenbroad		ST	ST	ST	ST	ST	
Randolph McLean		GT	GT	GT	GT	GT	
PR – Project Resident; LS – Lead Soils Technician; LG – Lead Geosynthetics; ST – Soils Technician; GT – Geosynthetics Technician; LT – Laboratory Technician; PCE – Project Certifying Engineer							



1.0 EARTHWORKS

1.1 Structural Fill

No activity during this reporting period.

1.2 Subgrade

All subgrade has been approved for 2020 construction. Figure 1 shows the current area of subgrade acceptance.

1.3 Soil Liner Fill

Soil Liner Fill (SLF) placement continued in the northern portion of Phase 2B between the 9,950' and 10,050' benches. SLF material was hauled from the Dump 1 stockpile using articulating haul trucks. The material was then spread with low ground pressure CAT dozers equipped with GPS. Moisture conditioning of SLF material was performed in place using a water truck, and compaction was done using a vibratory smooth drum compactor. Figure 2 shows the area of SLF placement during this reporting period.

Processing of SLF material continued at the Dump 1 processing plant.

1.4 Drain Cover Fill

Drain Cover Fill (DCF) placement was performed in the areas shown on Figure 4. The DCF was hauled from the mine's approved crushed ore stockpiles. The DCF was placed in a 2-foot lift on previously approved geomembrane by low ground pressure CAT dozers. Haul routes consisted of 4-foot lifts that will be spread into 2-foot lifts at a later date. Tezak laborers were present during placement to assist in removing debris/sandbags/large rocks, installing high volume solution collection piping, and ensuring that the lift thickness was correct. A NewFields' representative constantly monitored the DCF placement.

2.0 GEOSYNTHETICS

2.1 Geomembrane Exposure

No activity during this reporting period.

2.2 Geomembrane Installation

Geomembrane installation continued within the Phase 2B limits as shown on Figure 3. Approximately **151,119** square feet (P-3358 to P-3384) of 80-mil LLDPE (double sided textured) was deployed. Subgrade was inspected and approved by NewFields, Tezak, Newmont and AEG



representatives prior to geomembrane deployment. Approximately **6,696** linear feet of seam was fusion welded using two fusion welding machine/operator combinations. **Fourteen** destructive testing samples were marked during fusion seaming. Approximately **485** linear feet of seam was extrusion welded using two extrusion welding machine/operator combinations. **Three** destructive testing samples were marked during extrusion seaming. Non-destructive testing was performed for fusion welded seams. Repairs were performed using the extrusion welding method for some marked defects.

2.3 Anchor Trench

Anchor trench excavation and backfilled continued on the 10,050' bench.

2.4 Geomembrane Deliveries

No activity during this reporting period. All geomembrane rolls were delivered prior to the start of 2020 construction.

2.5 Geomembrane Acceptance

Panels P-3308 through P-3357 were accepted for drain cover fill placement. The attached Figure 3 shows the acceptance areas.

3.0 STORM WATER MANAGEMENT

Best Management Practices continue to be performed.

4.0 NEWFIELDS LABORATORY ACTIVITIES

NewFields personnel performed sieve analysis, atterberg limits, and compaction testing. The following samples were collected for laboratory testing:

- Drain Cover Fill (Crushed Ore): DCFO-6-R

5.0 MEETINGS AND COMMUNICATIONS

NewFields personnel listened to the morning safety line out for mine operations on the radio, attended Tezak's daily 2pm progress meeting, and participated in the VLF2 weekly construction meeting (June 30, 2020).

6.0 MISCELLANEOUS, ISSUES, AND CONCERNS

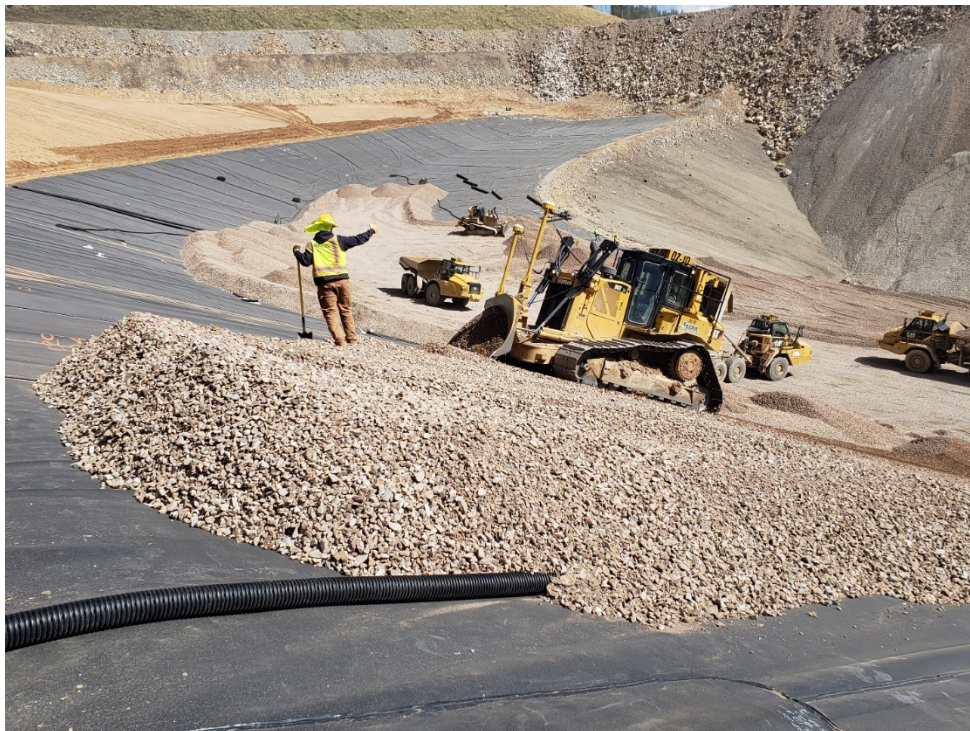
No activity during this reporting period.



7.0 PHOTOGRAPHS



June 29, 2020 – Compacting Soil Liner Fill (BM)



June 30, 2020 – Drain Cover Fill placement (BM)



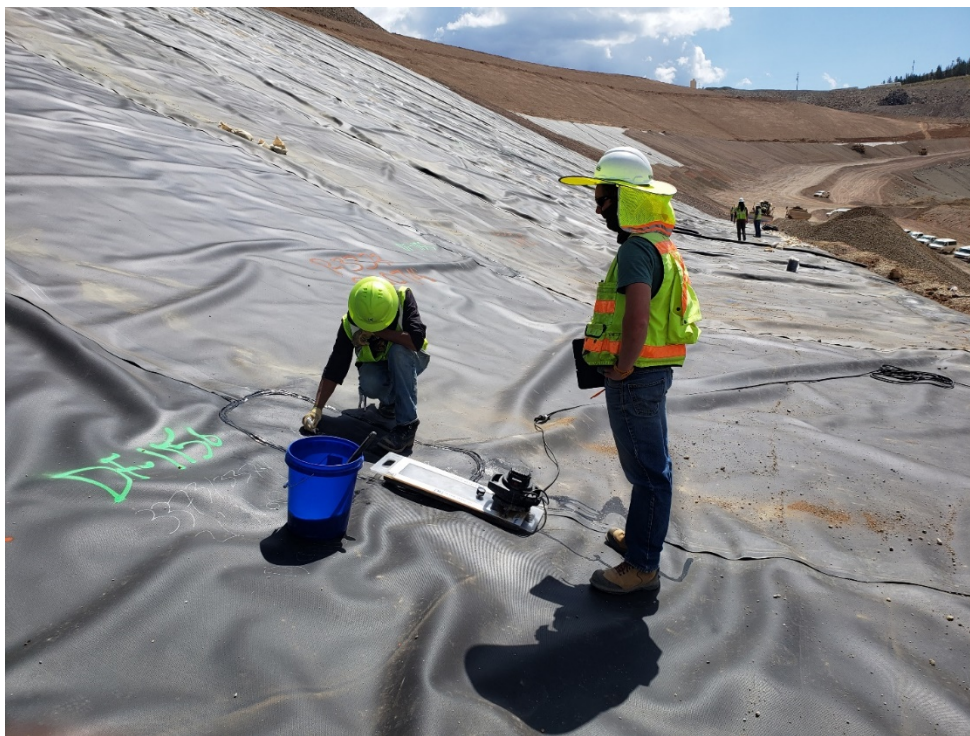
July 1, 2020 – Geomembrane deployment (BM)



July 1, 2020 – Pressure testing fusion welds (BM)



July 2, 2020 – Fusion welding seams (BM)



July 3, 2020 – Vacuum testing extrusion welds (BM)

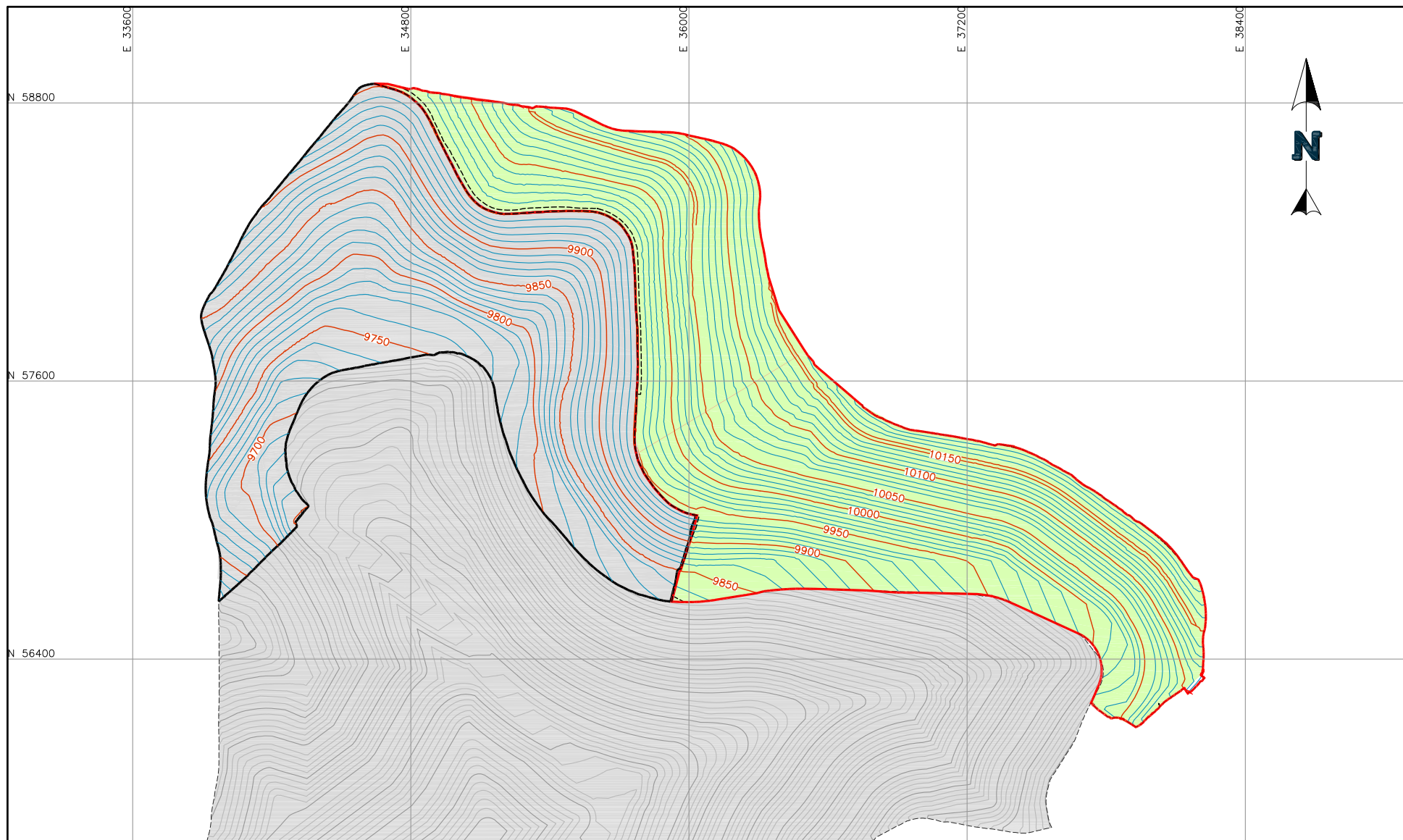


Prepared By (NewFields): Julie Pfeiffer Date: 7/4/2020
Reviewed By (Newmont): John Zal Date: 07/16/2020


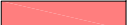

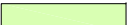


Attachments:

Figure 1 – Subgrade Acceptance
Figure 2 – SLF Placement
Figure 3 – Geomembrane Placement & Acceptance
Figure 4 – Drain Cover Fill Placement

P:\Projects\0106.032 VLF2 Phase 2 COA\A-CAD\FIGS\1.Weekly - Subgrade Acceptance\SA WE200704.dwg-7/2/2020 4:17 PM



LEGEND:

- | | | | |
|--|--------------------------|---|-----------------------------------|
|  | SUBGRADE GROUND CONTOURS |  | NEW SUBGRADE ACCEPTANCE AREA |
|  | PHASE 2A LIMITS-2019 |  | PREVIOUS SUBGRADE ACCEPTANCE AREA |
|  | PHASE 2A/2B LIMITS-2020 |  | PREVIOUSLY COMPLETED PHASES |



CLIENT **CRIPPLE CREEK & VICTOR
GOLD MINING COMPANY**

PROJECT

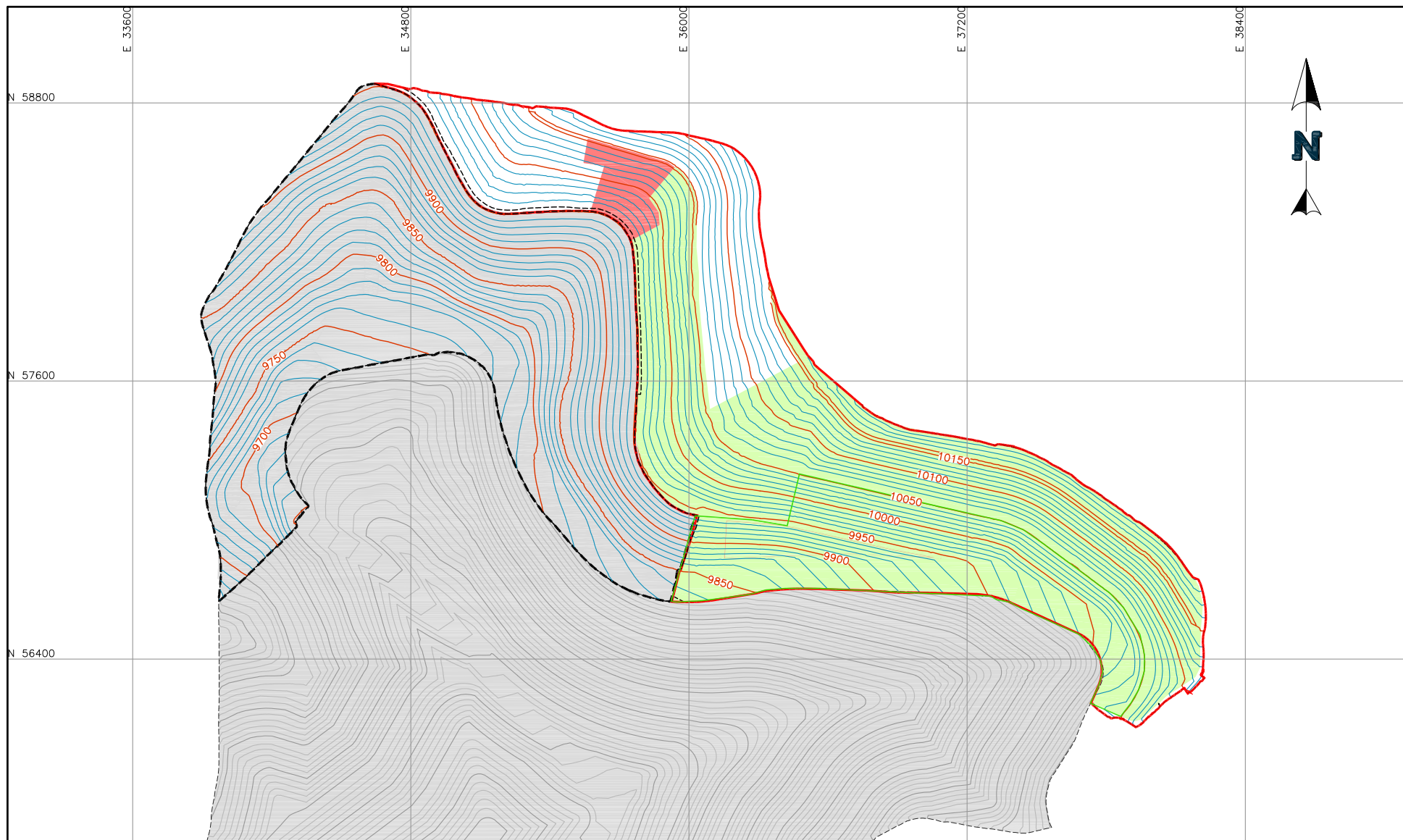
VLF2 PHASE 2 CQA

TITLE



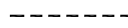
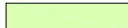



**WEEKLY SUBGRADE ACCEPTANCE
WEEK ENDING 07-04-20**

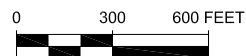
FILENAME SA WE200704	
FIGURE NO. 1	REVISION 1


P:\Projects\0106.032 VLF2 Phase 2 COA\A-CAD\FIGS\2.Weekly - SLF\SLF WE200704.dwg--7/6/2020 9:42 AM



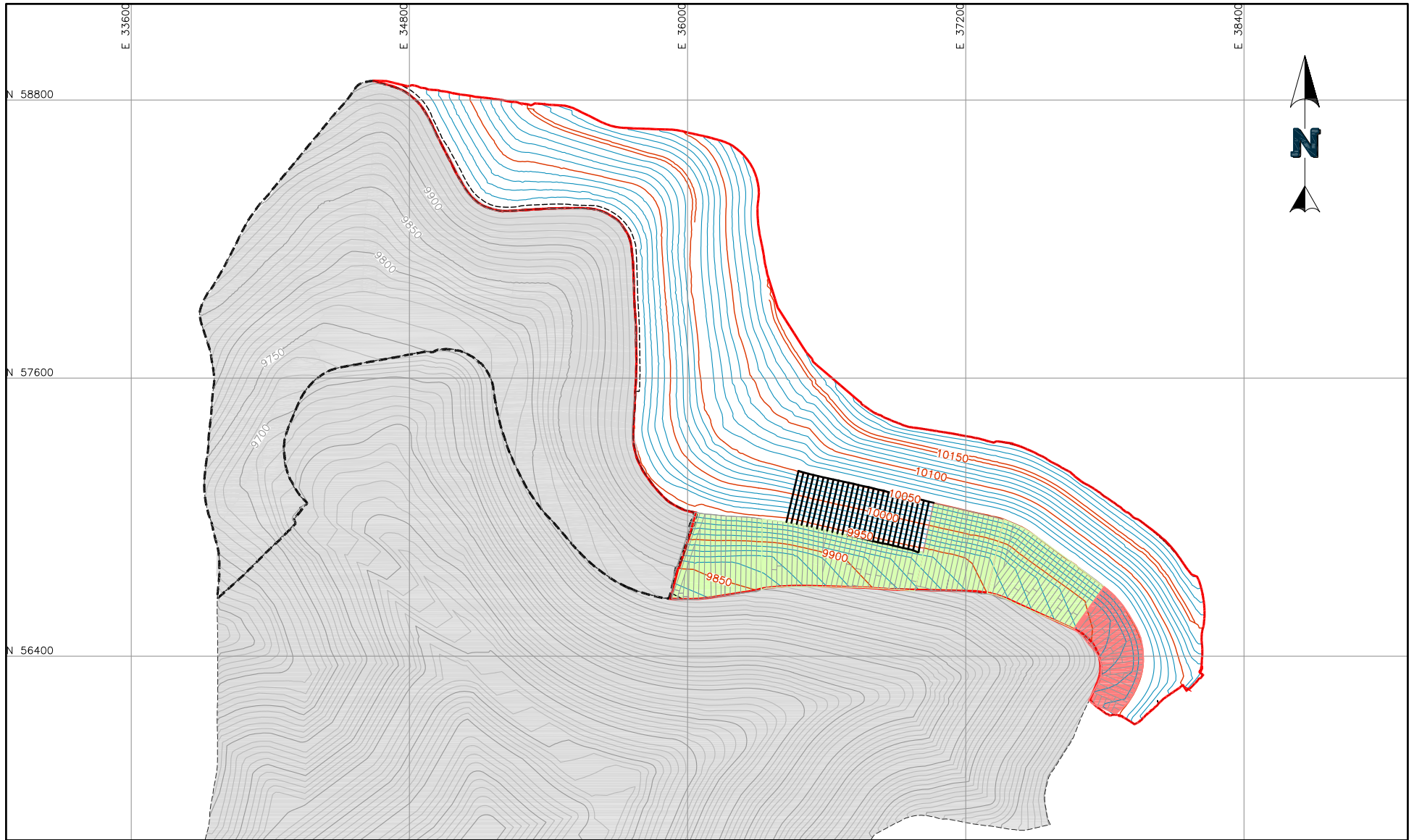
LEGEND:

- | | | | |
|---|--------------------------|---|-----------------------------|
|  | SUBGRADE GROUND CONTOURS |  | SLF PLACEMENT |
|  | PHASE 2A LIMITS-2019 |  | PREVIOUS SLF PLACEMENT |
|  | PHASE 2A/2B LIMITS-2020 |  | PREVIOUSLY COMPLETED PHASES |
|  | APPROVED SLF | | |


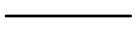





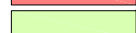

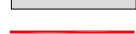
		CLIENT Cripple Creek & Victor Gold Mining Company	
PROJECT		VLF2 Phase 2 CQA	
TITLE	WEEKLY SLF PLACEMENT WEEK ENDING 07-04-20	FILENAME SLF WE200704	
		FIGURE NO. 2	REVISION 1

P:\Projects\0106.032 VLF2 Phase 2 COA\A-CAD\FIGS\3.Weekly - Geomembrane\Liner WE200704.dwg-7/6/2020 9:43 AM



LEGEND:

-  SUBGRADE GROUND CONTOURS
-  NEW GEOMEMBRANE PLACEMENT
-  PREVIOUS PHASE 2 GEOMEMBRANE PLACEMENT (UNCERTIFIED AREA)
-  PHASE 2A LIMITS-2019

-  GEOMEMBRANE ACCEPTANCE
-  PREVIOUS GEOMEMBRANE ACCEPTANCE
-  PREVIOUSLY COMPLETED PHASES
-  PHASE 2A/2B LIMITS-2020



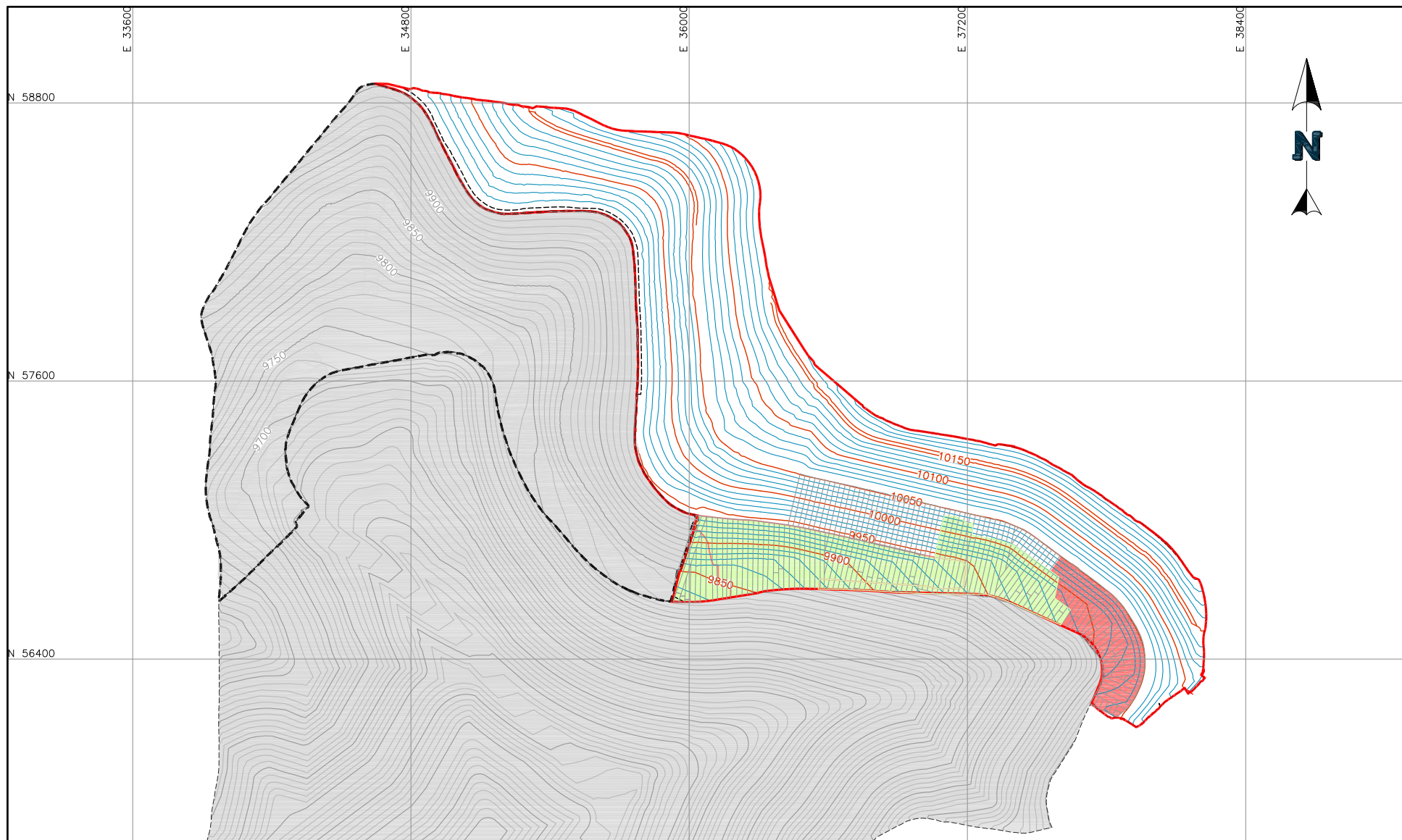
CLIENT **CRIPPLE CREEK & VICTOR GOLD MINING COMPANY**

PROJECT **VLF2 PHASE 2 CQA**




TITLE **WEEKLY GEOMEMBRANE PLACEMENT & ACCEPTANCE
WEEK ENDING 07-04-20**




FIGURE NO.		REVISION	
3		1	

P:\Projects\0106.032 VLF2 Phase 2 COA\A-CAD\FIGS\4.Weekly - DCF\DCF WE200704.dwg-7/6/2020 9:49 AM



LEGEND:

-  SUBGRADE GROUND CONTOURS
-  PHASE 2A LIMITS-2019
-  PHASE 2A/2B LIMITS-2020

-  DRAIN COVER FILL PLACEMENT AREA
-  PREVIOUS DRAIN COVER FILL PLACEMENT AREA
-  PREVIOUSLY COMPLETED PHASES



CLIENT **CRIPPLE CREEK & VICTOR
GOLD MINING COMPANY**

PROJECT **VLF2 PHASE 2 CQA**

TITLE **WEEKLY DRAIN COVER FILL PLACEMENT
WEEK ENDING 07-04-20**

FIGURE NO. **4** REVISION **1**



FIELD WEEKLY PROGRESS REPORT

PROJECT: VALLEY LEACH FACILITY (VLF2) PHASE 2 CQA
SITE: CRIPPLE CREEK & VICTOR GOLD MINE (COLORADO)
CONTRACTOR: TEZAK HEAVY EQUIPMENT
WEEK ENDING: SATURDAY, SEPTEMBER 5, 2020

REPORTING PERIOD: 8.30.2020 THROUGH 09.05.2020

Days	Sun	Mon	Tues	Wed	Thurs	Fri	Sat
Work Shifts		D	D	D	D	D	D
D – DAYSHIFT		N – NIGHTSHIFT			W – WEATHER		

AMBIENT TEMPERATURE RANGES:

HIGHS: 66°F TO 82°F

LOWS: 41°F TO 51°F

WEATHER CONDITIONS:

CLOUD COVER: PARTLY CLOUDY

PRECIPITATION: RAIN 9/1

WIND: WIND GUSTS FROM 16 TO 29 MPH

NEWFIELDS PERSONNEL ONSITE:

Personnel	Sun	Mon	Tues	Wed	Thurs	Fri	Sat
	Aug 30	Aug 31	Sep 1	Sep 2	Sep 3	Sep 4	Sep 5
Tyler Wendlandt		LS	LS	LS	LS	LS	LS
Taylor Thompson		GT	GT	GT	GT	GT	GT
Benjamin Melly		LG	LG	LG	LG	LG	LG
Korbin Gilbert		ST	ST	ST	ST	ST	
Jacob Sweezy		ST	ST	ST	ST	ST	
Thomas Mayer		ST	ST	ST	ST	ST	
Randolph McLean		GT	GT	GT	GT	GT	
Chris Zabalaga		ST	ST	ST	ST	ST	
PR – Project Resident; LS – Lead Soils Technician; LG – Lead Geosynthetics; ST – Soils Technician; GT - Geosynthetics Technician; LT – Laboratory Technician; PCE – Project Certifying Engineer; PE– Principal Engineer							



1.0 EARTHWORKS

1.1 Structural Fill

No activity during this reporting period.

1.2 Subgrade

All subgrade has been approved for 2020 construction. Figure 1 shows the current area of subgrade acceptance.

1.3 Soil Liner Fill

Soil Liner Fill (SLF) placement continued in the northern portion of Phase 2B between the 10,050' and 10,150' benches. SLF material was hauled from the Dump 1 stockpile using articulating haul trucks. The material was then spread with low ground pressure CAT dozers equipped with GPS. Moisture conditioning of SLF material was performed in place using a water truck, and compaction was done using a vibratory smooth drum compactor. Figure 2 shows the area of SLF placement during this reporting period.

1.4 Drain Cover Fill

Drain Cover Fill (DCF) placement was performed in the areas shown on Figure 4. The DCF was hauled from the mine's approved crushed ore stockpiles. The DCF was placed in a 2-foot lift on previously approved geomembrane by low ground pressure CAT dozers. Haul routes consisted of 4-foot lifts that will be spread into 2-foot lifts at a later date. Tezak laborers were present during placement to assist in removing debris/sandbags/large rocks, installing high volume solution collection piping, and ensuring that the lift thickness was correct. A NewFields' representative constantly monitored the DCF placement.

2.0 GEOSYNTHETICS

2.1 Geomembrane Exposure

Tezak exposed geomembrane along the 9,950' bench on the N side of Phase 2B with skid steers and laborers with shovels. A NewFields representative monitored the process.

2.2 Geomembrane Installation

Geomembrane installation continued within the Phase 2B limits as shown on Figure 3. Approximately **391,303** square feet (P-3756 to P-3876) of 80-mil LLDPE (double sided textured) was deployed to finish liner placement in Phase 2B Part 1. Subgrade was inspected and approved by NewFields, Tezak, Newmont and AEG representatives prior to geomembrane deployment.



Approximately **19,546** linear feet of seam was fusion welded using two fusion welding machine/operator combinations. **Forty one** destructive testing samples were marked during fusion seaming. Approximately **455** linear feet of seam was extrusion welded using one extrusion welding machine/operator combination. **One** destructive testing samples was marked during extrusion seaming. Non-destructive testing was performed for fusion welded seams. Repairs were performed using the extrusion welding method for some marked defects.

2.3 Anchor Trench

Anchor trench excavation and backfilling continued on the 10,050' bench.

2.4 Geomembrane Deliveries

No activity during this reporting period. All geomembrane rolls were delivered prior to the start of 2020 construction.

2.5 Geomembrane Acceptance

NewFields accepted panels P-3657 through P-3712 for drain cover fill placement.

3.0 STORM WATER MANAGEMENT

Best Management Practices continue to be performed.

4.0 NEWFIELDS LABORATORY ACTIVITIES

NewFields personnel performed sieve analysis, atterberg limits, and compaction testing. The following samples were collected for laboratory testing:

- Drain Cover Fill: NFDCF-3-R, NFDCF-4-R
- Soil Liner Fill: NFSLF-143-R

5.0 MEETINGS AND COMMUNICATIONS

NewFields personnel listened to the morning safety line out for Tezak, attended Tezak's daily 2pm progress meeting, and participated in the VLF2 weekly construction meeting (September 1, 2020).

6.0 MISCELLANEOUS, ISSUES, AND CONCERNS

No activity during this reporting period.



7.0 PHOTOGRAPHS



August 31, 2020 – HVSC pipe placement (TW)



September 1, 2020 – SLF placement (BM)



September 2, 2020 – DCF placement (BM)



September 3, 2020 – Geomembrane and SLF placement progress (BM)



September 3, 2020 – Geomembrane fusion seaming (BM)



September 4, 2020 – Geomembrane deployment (BM)



September 5, 2020 – Geomembrane trial weld (BM)

Prepared By (NewFields): Tyler Wendlandt Date: 9/5/2020

Reviewed By (Newmont): Jeff Rul Date: 9/22/2020

Attachments:

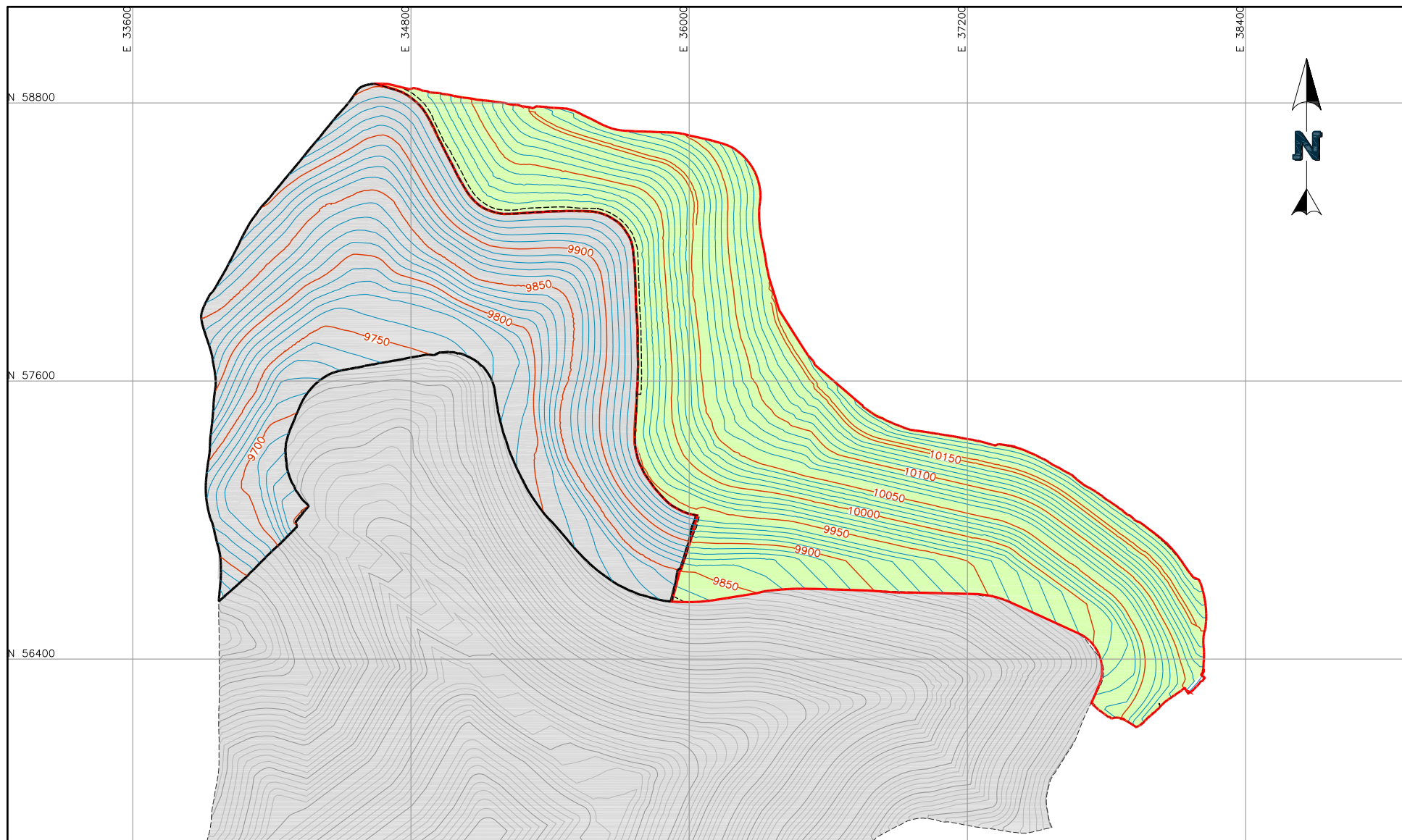
Figure 1 – Subgrade Acceptance

Figure 2 – SLF Placement



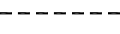



Figure 3 – Geomembrane Placement & Acceptance

Figure 4 – Drain Cover Fill Placement

P:\Projects\0106.032 VLF2 Phase 2 COA\A-CAD\FIGS\1.Weekly - Subgrade Acceptance\SA WE200905.dwg-9/15/2020 11:11 AM



LEGEND:

- | | | | |
|--|--------------------------|---|-----------------------------------|
|  | SUBGRADE GROUND CONTOURS |  | NEW SUBGRADE ACCEPTANCE AREA |
|  | PHASE 2A LIMITS-2019 |  | PREVIOUS SUBGRADE ACCEPTANCE AREA |
|  | PHASE 2A/2B LIMITS-2020 |  | PREVIOUSLY COMPLETED PHASES |



CLIENT **CRIPPLE CREEK & VICTOR
GOLD MINING COMPANY**

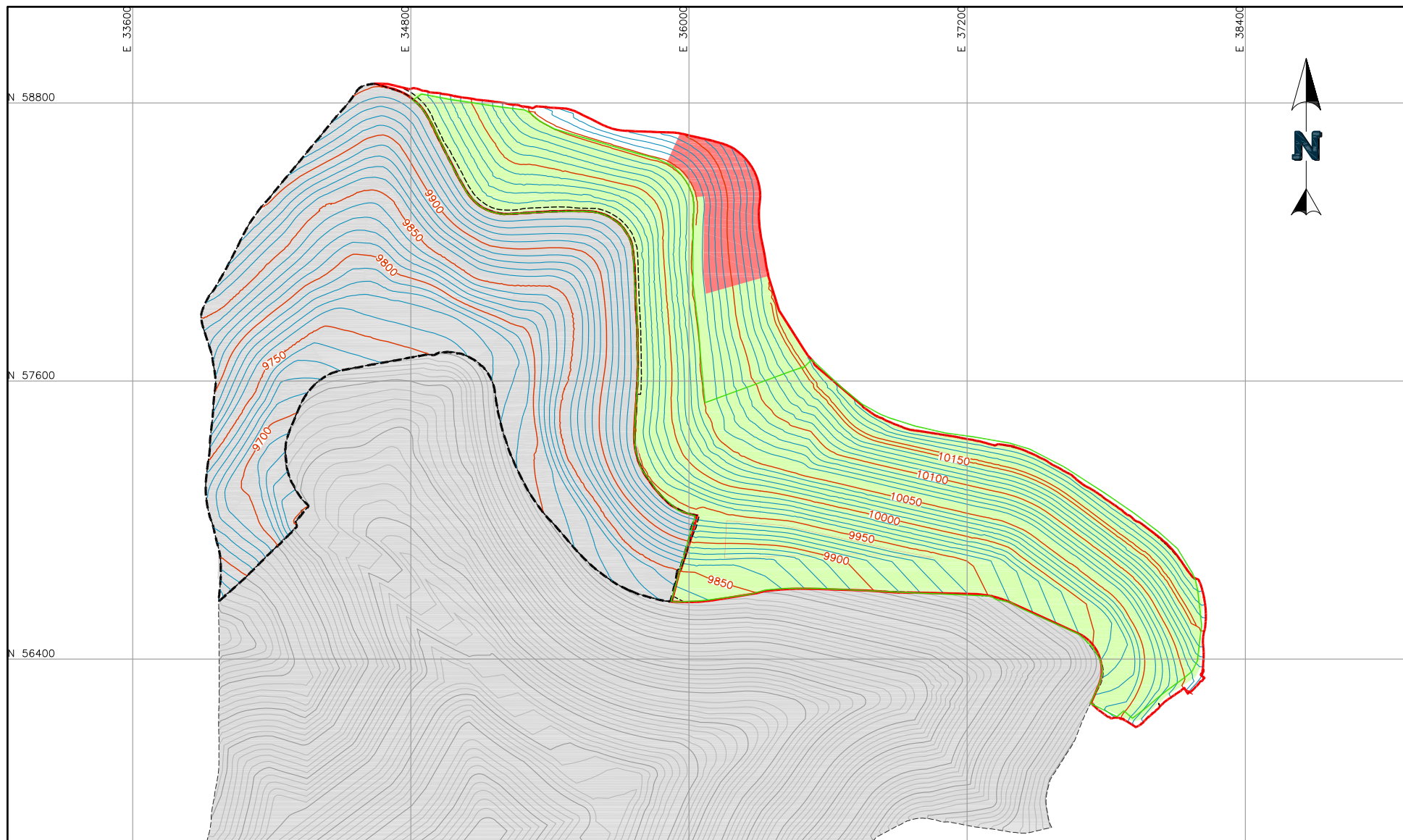
PROJECT

VLF2 PHASE 2 CQA


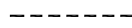



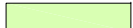
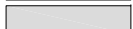
TITLE

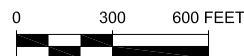
**WEEKLY SUBGRADE ACCEPTANCE
WEEK ENDING 09-05-20**


FIGURE NO.		REVISION	
1		1	



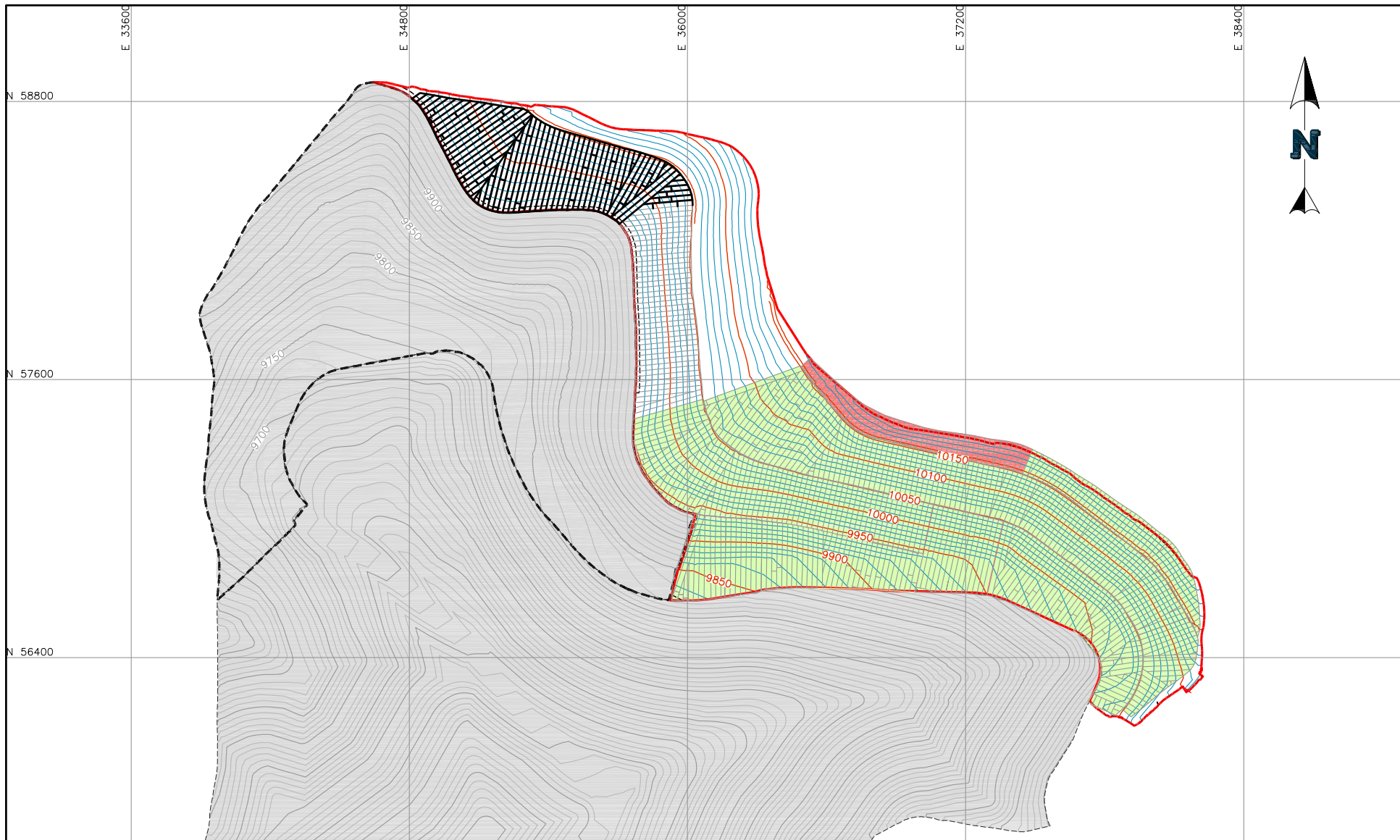
LEGEND:

-  SUBGRADE GROUND CONTOURS
-  PHASE 2A LIMITS-2019
-  PHASE 2A/2B LIMITS-2020
-  APPROVED SLF
-  SLF PLACEMENT
-  PREVIOUS SLF PLACEMENT
-  PREVIOUSLY COMPLETED PHASES


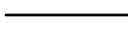

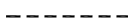




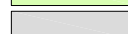

		CLIENT		CRIPPLE CREEK & VICTOR GOLD MINING COMPANY	
PROJECT		VLF2 PHASE 2 CQA			
TITLE	WEEKLY SLF PLACEMENT WEEK ENDING 09-05-20			FILENAME	
				SLF WE200905	
				FIGURE NO.	REVISION
				2	1

P:\Projects\0106.032 VLF2 Phase 2 COA\A-CAD\FIGS\3.Weekly - Geomembrane\Liner WE200905.dwg - 9/17/2020 8:21 AM



LEGEND:

-  SUBGRADE GROUND CONTOURS
-  NEW GEOMEMBRANE PLACEMENT
-  PREVIOUS PHASE 2 GEOMEMBRANE PLACEMENT (UNCERTIFIED AREA)
-  PHASE 2A LIMITS-2019

-  GEOMEMBRANE ACCEPTANCE
-  PREVIOUS GEOMEMBRANE ACCEPTANCE
-  PREVIOUSLY COMPLETED PHASES
-  PHASE 2A/2B LIMITS-2020



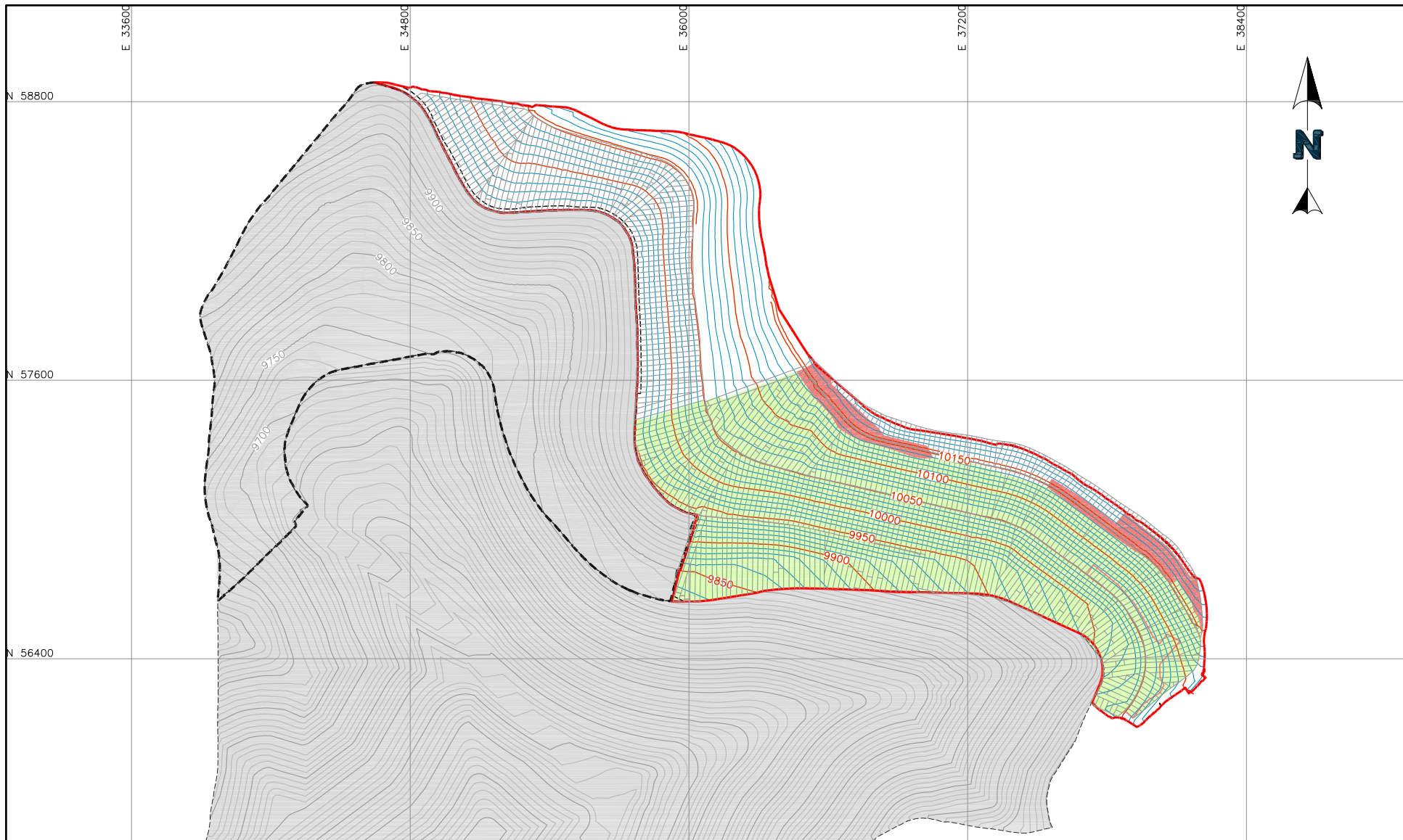
CLIENT CRIPPLE CREEK & VICTOR GOLD MINING COMPANY

PROJECT VLF2 PHASE 2 CQA

TITLE WEEKLY GEOMEMBRANE PLACEMENT & ACCEPTANCE
WEEK ENDING 09-05-20

FILENAME
Liner WE200905
FIGURE NO. 3
REVISION 1

P:\Projects\0106.032 VLF2 Phase 2 COA\A-CAD\FIGS\4.Weekly - DCF\DCF WE200905.dwg-9/15/2020 11:27 AM



LEGEND:



SUBGRADE GROUND CONTOURS



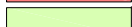
PHASE 2A LIMITS-2019



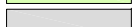
PHASE 2A/2B LIMITS-2020



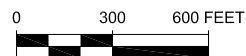
DRAIN COVER FILL PLACEMENT AREA



PREVIOUS DRAIN COVER FILL PLACEMENT AREA



PREVIOUSLY COMPLETED PHASES



CLIENT **CRIPPLE CREEK & VICTOR
GOLD MINING COMPANY**

PROJECT **VLF2 PHASE 2 CQA**

TITLE **WEEKLY DRAIN COVER FILL PLACEMENT
WEEK ENDING 09-05-20**

FIGURE NO. **4** REVISION **1**