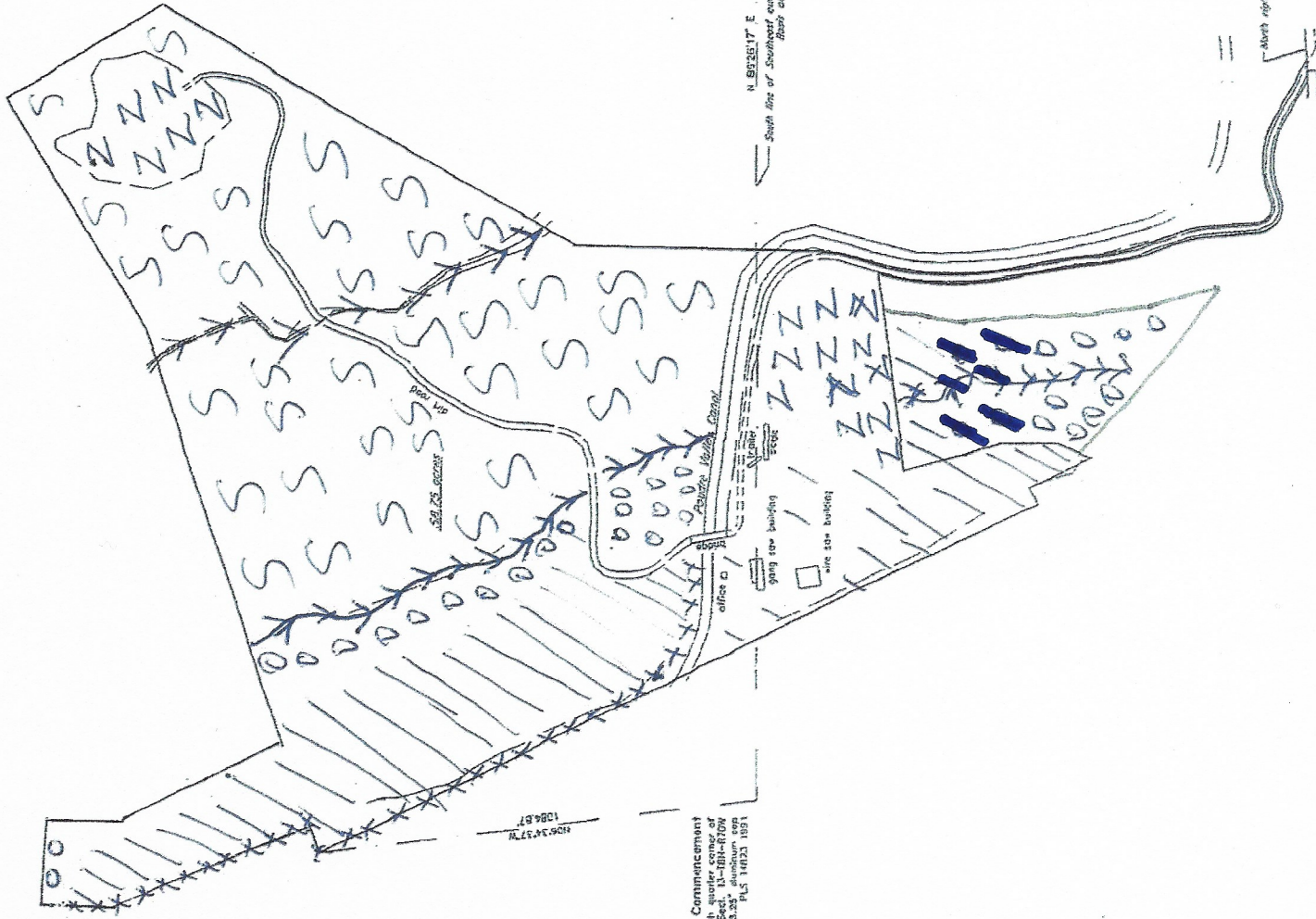


A portion of the Southeast quarter and the Southwest quarter of the Southwest quarter of Section 13 and the North half of the Northeast quarter of Section 24, Township 8 North, Range 70 West of the 6th PM, County of Larimer, State of Colorado



EXISTING DISTURBED AREA  
FUTURE MINE AREA  
STOCKPILE AREA  
OVERBURDEN + TOPSOIL

HISTORIC WATERSHED  
PRISTINE WILDLIFE CONSERVATION AREA  
SSSS



Point of Commencement  
South quarter corner of  
Sect. 13-T8N-R70W  
Bearing S 89°51'17" E  
Dist. 3.25  
P.L.S. 14023 1981

N 89°51'17" E 3850.61'  
South line of Southwest quarter of Sect. 13-T8N-R70W  
Basis of Bearings

Southeast corner of  
Sect. 13-T8N-R70W  
Bearing S 89°51'17" E  
Dist. 3.25  
P.L.S. 14023 1981

DIFFUSE KNAPWEED  
PULLED BY HAND  
ALONG HAVL ROADS

Notes:  
- Bearings are based on the South line of the Southwest quarter of Section 13-T8N-R70W, and the North line of the Northeast quarter of Section 24-T8N-R70W, per the Colorado Coordinate System of 1983, North Zone.  
- Ground distances are shown on this plat. To convert to grid distances multiply by a combined scale factor of 0.99997460.  
- The plat is a true and correct representation of the land shown. It is possible that there are recorded and unrecorded documents which may affect the boundary of this property.  
- No warranty or representation is made by this plat.  
- No improvements, other than those shown, were located on this date.