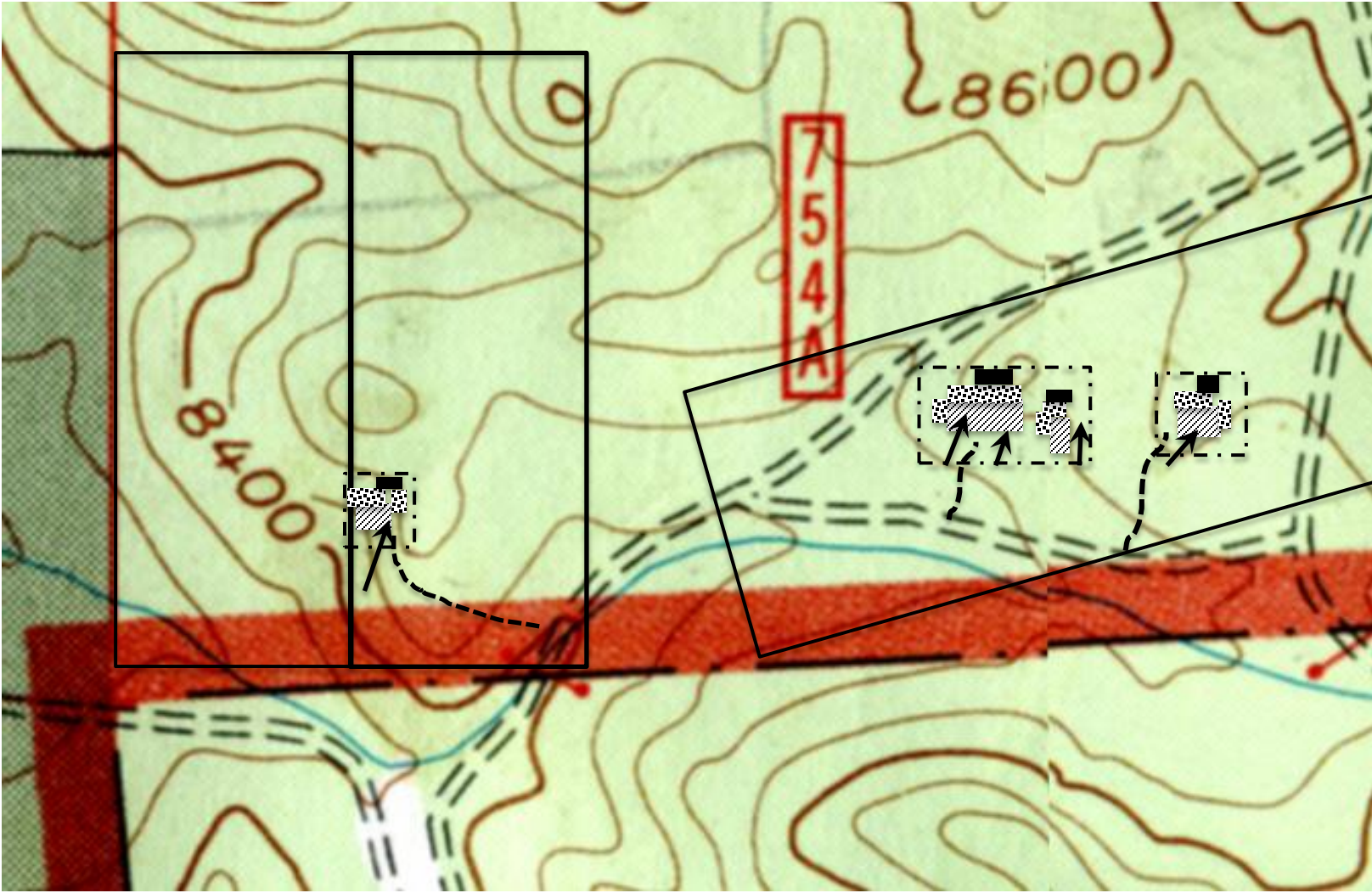



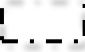
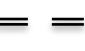
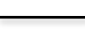




J&J Collecting project#1  
 Hard rock/metal mining  
 Limited impact operation (110(1))  
 Reclamation permit application  
 6.3.5 (2) EXHIBIT E - MINING PLAN MAP - DETAIL 1

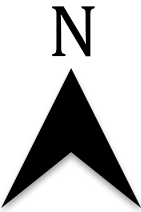


**Legend**

-  TOPSOIL
-  OVERBURDEN
-  PROPOSED DIG
-  PERMIT BOUNDARY
-  FOREST SERVICE ROAD
-  CLAIM BOUNDARY
-  PERMIT AREA (WALK-IN) ROAD
-  DIRECTION OF MINERAL EXTRACTION

Prepared by:

\_\_\_\_\_  
 Jeff Schimel<sup>1</sup>



1 inch = 400 feet  
 NAD 27

Prepared July 30<sup>th</sup>, 2018  
 Applicants: Jeff Schimel and Jim Reed

**TOTAL PERMIT AFFECTED AREA 1.39 ACRES**  
 PLANNED DISTURBANCE:  
 SITE 1: .32 ACRE  
 SITE 2 & 3: .60 ACRE  
 SITE 4: .197 ACRE  
 PERMIT AREA WALK-IN ROADS: .266 ACRE

**NOTES:** (1) Growth medium to be salvaged 4 inches min to 8 inches max. (2) The number of dig sites will not exceed 2 at a time. (3) The depth of excavations will not exceed 20 feet. (4) The locations shown of proposed digs, topsoil, overburden, and growth medium stockpiles are approximate. Their specific sizes and locations will depend on the mineral lode direction of trend and depth. These stockpiles total volume will not exceed the total volume of cubic yards shown on Exhibit D, 6.3.4(2). (5) Not more than .60 acres will be disturbed at any one time. <sup>1</sup> All exhibit maps were prepared by Jeff Schimel and based on USGS engineered topographical maps (as revised by the U.S. Forest Service), according to the North American Datum of 1927 (NAD 27), and thus complies with national map accuracy standards.