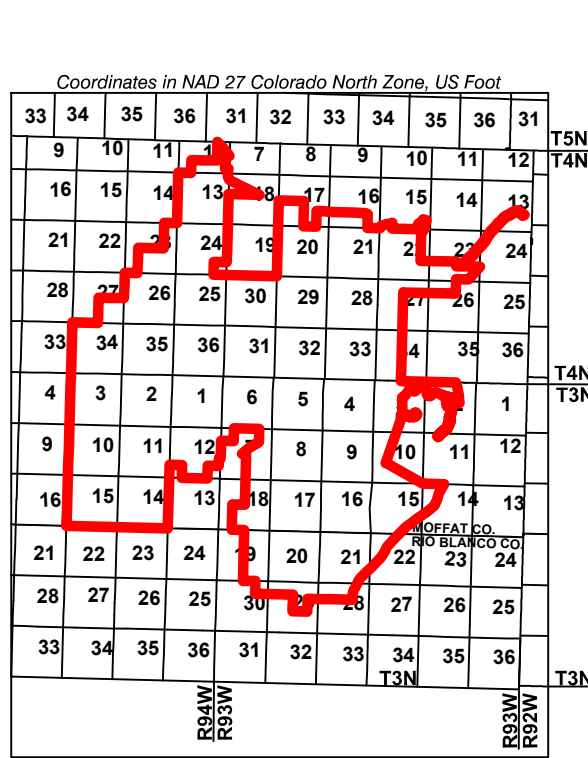
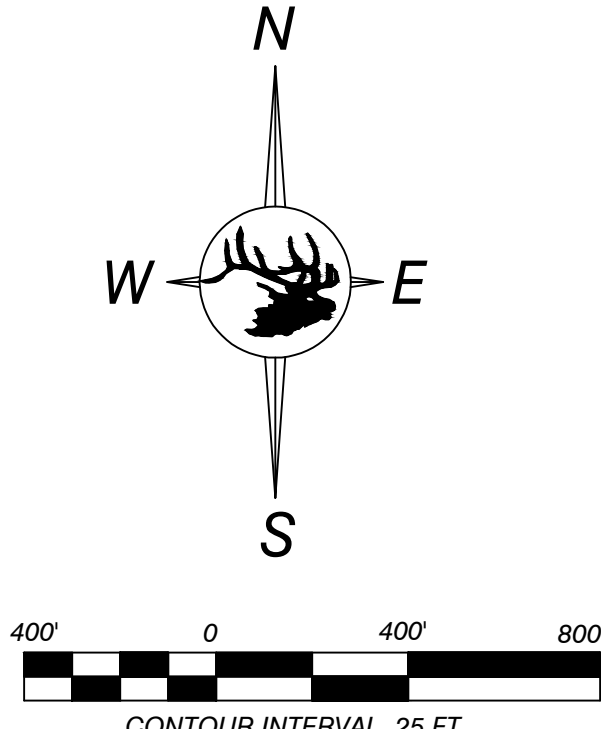


LEGEND

- PERMIT BOUNDARY
- BUILDINGS
- POWERLINE
- WATER LINE
- TELEPHONE LINE OR OPTICAL CABLE
- DISTURBANCE BOUNDARY
- TOWNSHIP & RANGE
- STREAMS
- AREA MINED PRIOR TO AUGUST 3, 1977
- AREA MINED AFTER AUGUST 3, 1977 AND PRIOR TO MAY 3, 1978
- RED WING UNDERGROUND MINE
- CORRUGATED CULVERT (CMP)
- PONDS



ENGINEERS CERTIFICATION
I, BRIAN W. COATES, hereby certify that this map has been reviewed by me and is true and correct to the best of my knowledge and information, relying on information supplied by experts employed by Colowyo Coal Company or qualified consultants working for Colowyo Coal Company, and that I am a Professional Engineer licensed in Colorado as required by the provisions of C.R.S. 12-26-101 through C.R.S. 12-26-118. IN WITNESS WHEREOF, I have hereunder set my hand and affixed my seal.



EXISTING STRUCTURES
North Area



SCALE: 1" = 400'
DATE: 8/8/22
DRAWN BY: BWC
APPROVED BY: J.C.S.
DRWG NO.

MAP 22

No.	REVISION	DATE	BY	CHK
MR 162	ADDED BARREL STORAGE BUILDING REVISED SCALE AND LAYOUT	9/12/16	TONY	LES
MR 168	ADDED CONTRACTOR MANAGEMENT BUILDING	12/30/16	TONY	LES
RN 07	ADDED WATER LINE UPDATED TOPOGRAPHY	5/25/18	TONY	LES
TR 135	REVISED PERMIT BOUNDARY	12/20/19	TONY	AA
MR 223	ADDED SALT STORAGE & UPDATED TOPOGRAPHY	9/8/20	TONY	AA