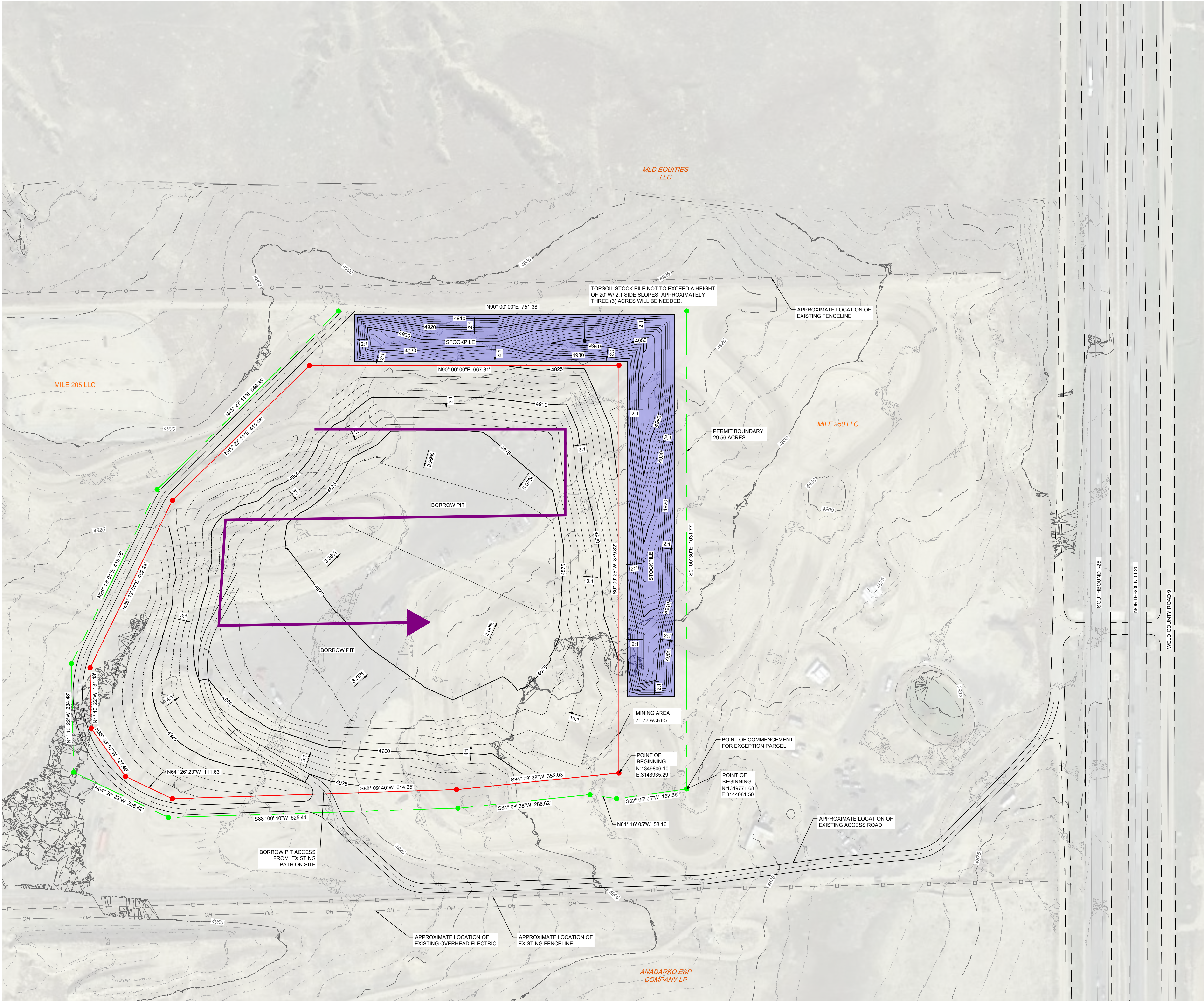


PRE-MINE / MINE SITE MAP



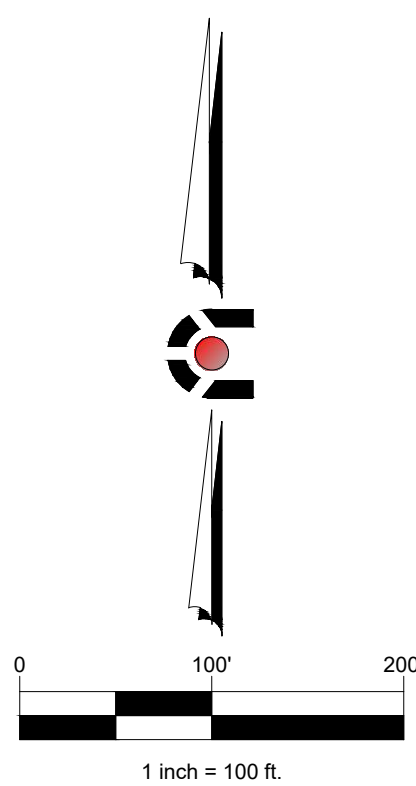
- LEGEND:
- PERMIT BOUNDARY
 - EXISTING CONTOUR
 - PROPOSED CONTOUR
 - MINING BOUNDARY
 - STOCKPILE LIMITS
 - CALCULATED BOUNDARY POINTS
 - APPROXIMATE FENCE
 - OVERHEAD ELECTRIC
 - PROPERTY OWNER
 - MINING DIRECTION

- NOTES:
- LIMITS OF CONSTRUCTION NOT TO EXCEED 30 ACRES.
 - 12" OF TOP SOIL TO BE PLACED IN STOCKPILE, WILL BE USED FOR RECLAMATION OF SITE.
 - AFFECTED AREA REPRESENTS THE SITE AFTER THE COMPLETION OF RECLAMATION ACTIVITIES. SHEET 2 FURTHER DESCRIBES SAID AREA.

DATA:
BORROW VOLUME = 1,216,440 CY
STOCKPILE VOLUME = 50,125 CY

PERMIT BOUNDARY:
BEGINNING IN THE SOUTHEAST CORNER:
THENCE S 82°05'05" W, A DISTANCE OF 152.56 FEET;
THENCE N 81°16'05" W, A DISTANCE OF 58.16 FEET;
THENCE S 84°08'38" W, A DISTANCE OF 286.62 FEET;
THENCE S 88°09'40" W, A DISTANCE OF 625.41 FEET;
THENCE N 64°26'23" W, A DISTANCE OF 226.62 FEET;
THENCE N 01°10'22" W, A DISTANCE OF 234.48 FEET;
THENCE N 26°13'01" E, A DISTANCE OF 418.76 FEET;
THENCE N 45°27'11" E, A DISTANCE OF 549.35 FEET;
THENCE N 90°00'00" E, A DISTANCE OF 751.38 FEET;
THENCE S 00°00'30" E, A DISTANCE OF 1031.77 FEET; TO THE POINT OF BEGINNING.
PARCEL CONTAINS AN AREA OF 1,232,863 SQUARE FEET OR 29.56 ACRES MORE OR LESS.

AFFECTED AREA:
BEGINNING IN THE SOUTHEAST CORNER:
THENCE S 82°05'05" W, A DISTANCE OF 152.56 FEET;
THENCE N 81°16'05" W, A DISTANCE OF 58.16 FEET;
THENCE S 84°08'38" W, A DISTANCE OF 286.62 FEET;
THENCE S 88°09'40" W, A DISTANCE OF 625.41 FEET;
THENCE N 64°26'23" W, A DISTANCE OF 226.62 FEET;
THENCE N 01°10'22" W, A DISTANCE OF 234.48 FEET;
THENCE N 26°13'01" E, A DISTANCE OF 418.76 FEET;
THENCE N 45°27'11" E, A DISTANCE OF 549.35 FEET;
THENCE N 90°00'00" E, A DISTANCE OF 751.38 FEET;
THENCE S 00°00'30" E, A DISTANCE OF 1031.77 FEET; TO THE POINT OF BEGINNING.
PARCEL CONTAINS AN AREA OF 1,232,863 SQUARE FEET OR 29.56 ACRES MORE OR LESS.



THESE CONSTRUCTION PLANS WERE PREPARED BY ME (OR UNDER MY DIRECT SUPERVISION) IN ACCORDANCE WITH THE REQUIREMENTS OF THE COLORADO DIVISION OF RECLAMATION MINING & SAFETY.



7/11/2019

JUSTIN R. SIMPSON, P.E. 54261 DATE

CIVIL ENGINEERING
DEVELOPMENT CONSULTING
NATURAL RESOURCES CONSULTING
LAND SURVEYING
303.703.4444
1950 W. Littleton Blvd., Ste. 109
Littleton, CO 80120



CALL 2 BUSINESS DAYS IN ADVANCE BEFORE YOU DIG, GRADE OR EXCAVATE FOR THE MARKING OF UNDERGROUND MEMBER UTILITIES.
CORE ASSUMES NO RESPONSIBILITY FOR EXISTING UTILITY LOCATIONS (UNDERGROUND AND VERTICAL) OR FOR THE LOCATION OF ANY UTILITIES. IT IS, HOWEVER, THE LOCATION OF ALL UTILITIES FROM THE COMPLETION OF ANY CONSTRUCTION ACTIVITIES.

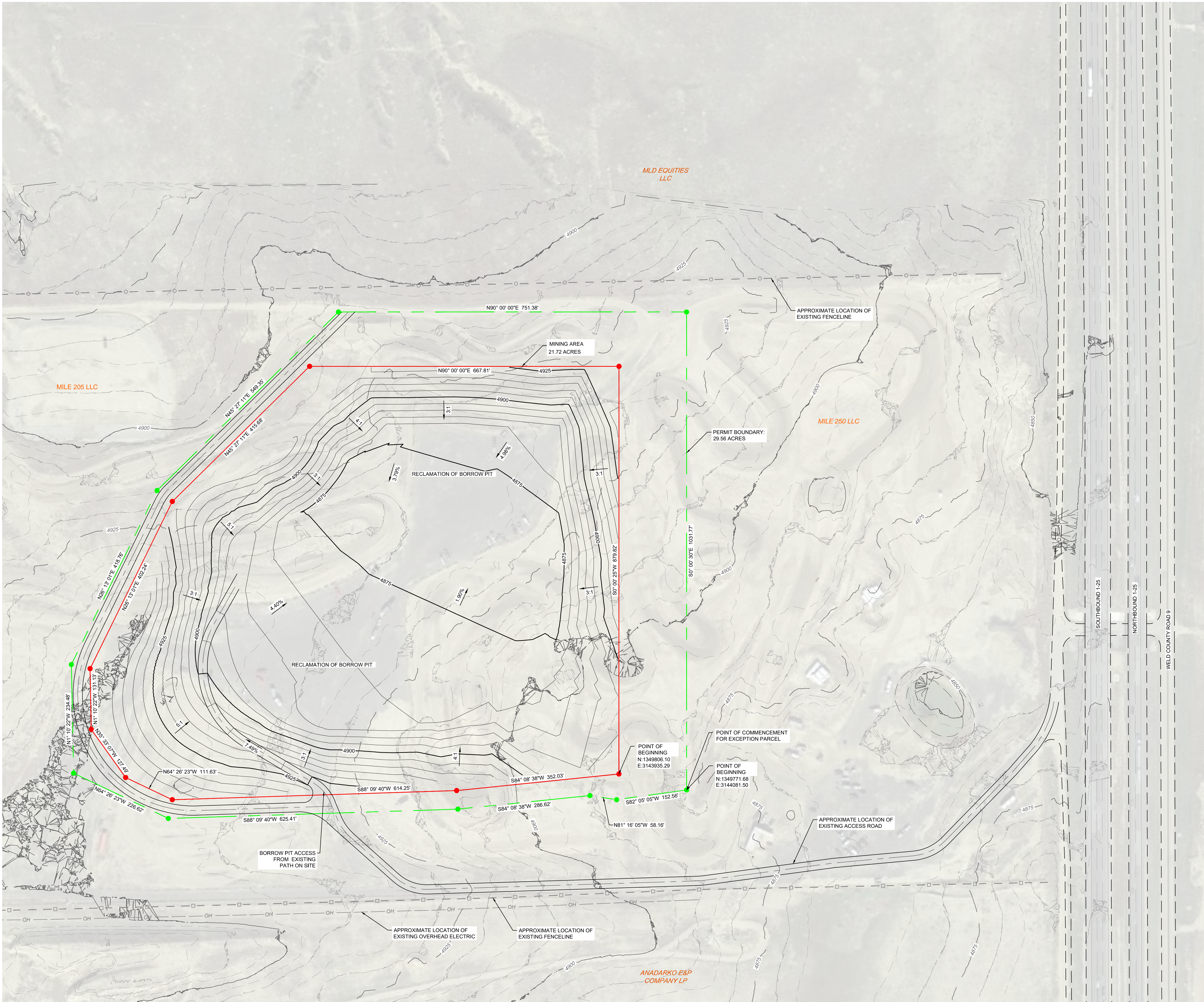
#	REVISION DESCRIPTION	DATE	BY
1	GRADING PLAN #1	7/9/19	LNM

MOTORCROSS PIT
SEMA CONSTRUCTION
GRADING PLAN
BORROW PIT

DESIGNED BY: LNM
DRAWN BY: LNM
CHECKED BY: JRS

JOB NO.
18-044-03
SHEET
1 OF 2

RECLAMATION SITE MAP



LEGEND:

- PERMIT BOUNDARY
- EXISTING CONTOUR
- PROPOSED CONTOUR
- MINING BOUNDARY
- STOCKPILE LIMITS
- CALCULATED BOUNDARY POINTS
- APPROXIMATE FENCE
- OVERHEAD ELECTRIC
- PROPERTY OWNER

NOTES:

- LIMITS OF CONSTRUCTION NOT TO EXCEED 30 ACRES.
- 12" OF TOP SOIL TO BE PLACED IN STOCKPILE, WILL BE USED FOR RECLAMATION OF SITE.
- AFFECTED AREA REPRESENTS THE SITE AFTER THE COMPLETION OF RECLAMATION ACTIVITIES.

DATA:

BORROW VOLUME = 1,216,440 CY

PERMIT BOUNDARY:

BEGINNING IN THE SOUTHEAST CORNER:

THENCE S 82°05'05" W, A DISTANCE OF 152.56 FEET;
THENCE N 81°16'05" W, A DISTANCE OF 58.16 FEET;
THENCE S 84°08'38" W, A DISTANCE OF 286.62 FEET;
THENCE N 64°26'23" W, A DISTANCE OF 226.62 FEET;
THENCE N 01°10'22" W, A DISTANCE OF 234.48 FEET;
THENCE N 26°13'01" E, A DISTANCE OF 418.76 FEET;
THENCE N 45°27'11" E, A DISTANCE OF 549.35 FEET;
THENCE N 90°00'00" E, A DISTANCE OF 751.38 FEET;
THENCE S 00°00'30" E, A DISTANCE OF 1031.77 FEET; TO THE POINT OF BEGINNING.

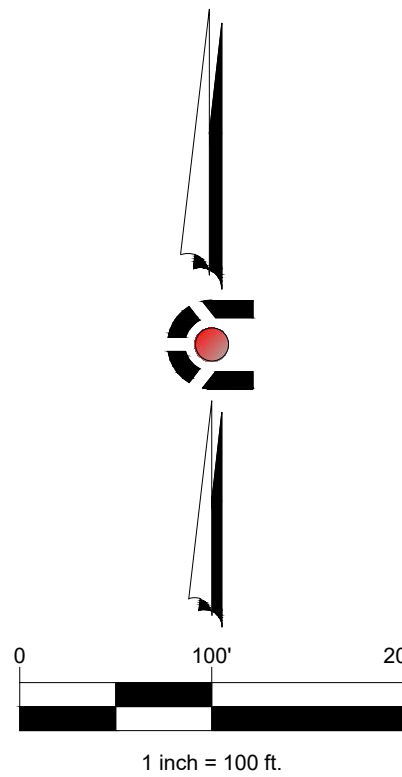
PARCEL CONTAINS AN AREA OF 1,232,863 SQUARE FEET OR 28.30 ACRES, MORE OR LESS.

AFFECTED AREA:

BEGINNING IN THE SOUTHEAST CORNER:

THENCE S 84°08'38" W, A DISTANCE OF 352.03 FEET;
THENCE S 88°09'40" W, A DISTANCE OF 614.28 FEET;
THENCE N 64°26'23" W, A DISTANCE OF 111.63 FEET;
THENCE N 35°33'07" W, A DISTANCE OF 127.49 FEET;
THENCE N 01°10'22" W, A DISTANCE OF 131.13 FEET;
THENCE N 26°13'01" E, A DISTANCE OF 402.24 FEET;
THENCE N 45°27'11" E, A DISTANCE OF 415.68 FEET;
THENCE N 90°00'00" E, A DISTANCE OF 667.81 FEET;
THENCE S 00°00'25" W, A DISTANCE OF 879.82 FEET; TO THE POINT OF BEGINNING.

PARCEL CONTAINS AN AREA OF 911,260 SQUARE FEET OR 21.92 ACRES, MORE OR LESS.



THESE CONSTRUCTION PLANS WERE PREPARED BY ME (OR UNDER MY DIRECT SUPERVISION) IN ACCORDANCE WITH THE REQUIREMENTS OF THE COLORADO DIVISION OF RECLAMATION MINING & SAFETY.



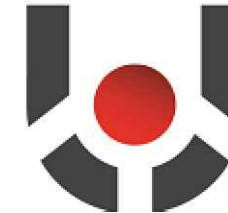
7/11/2019

JUSTIN R. SIMPSON, P.E. 54251

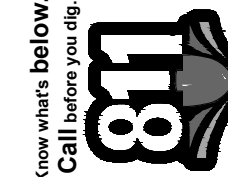
DATE

CIVIL ENGINEERING
DEVELOPMENT CONSULTING
NATURAL RESOURCES CONSULTING
LAND SURVEYING
303.703.4444
1950 W. Littleton Blvd., Ste. 109
Littleton, CO 80120

CORE
CONSULTANTS



CALL 24 HOURS AHEAD BEFORE YOU
DIG, GRADE OR EXCAVATE FOR THE MARKING OF
UNDERGROUND MEMBER UTILITIES.
CORE ASSUMES NO RESPONSIBILITY FOR EXISTING UTILITY
LOCATIONS (HORIZONTAL AND VERTICAL) OR FOR THE
LOCATION OF ANY UTILITIES. IT IS THE RESPONSIBILITY
OF THE USER TO OBTAIN THE NECESSARY INFORMATION
FROM THE BEST AVAILABLE INFORMATION. IT IS, HOWEVER,
THE USER'S RESPONSIBILITY TO OBTAIN THE NECESSARY
INFORMATION FROM THE BEST AVAILABLE INFORMATION.



#	REVISION DESCRIPTION	DATE	BY
1	GRADING PLAN #1	7/9/19	LNM

MOTORCROSS PIT
SEMA CONSTRUCTION
GRADING PLAN
RECLAMATION PLAN

DESIGNED BY: LNM
DRAWN BY: LNM
CHECKED BY: JRS

JOB NO.
18-044-03
SHEET
2 OF 2