



TRAPPER MINING INC.

August 10, 2020

Ms. Robin Reilley
Environmental Protection Specialist
Colorado Division of Reclamation, Mining, and Safety
1313 Sherman Street, Room 215
Denver, CO 80203

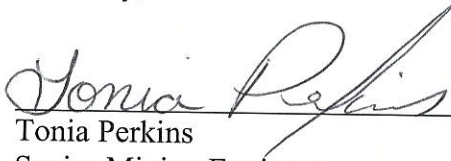
RE: 2020 Developmental Drilling Report

Dear Ms. Reilley,

In pursuant of Section 4.07.3 of CDRMS rule, this is a report detailing the abandoning of drill holes for the 2020 developmental drilling program. Attached is a spreadsheet with the required drill hole information and three maps with the drill locations. There were a total of 45 holes drilled in 2020.

Please contact me if you have any questions.

Sincerely,



Tonia Perkins
Senior Mining Engineer

Cc: Forrest Luke
Graham Roberts
File 109.2.3.1

P.O. Box 187

Craig, Colorado 81626

(970) 824-4401

Trapper Mining Inc.
2020 Developmental Drilling Program Summary
Attachment

Hole ID			Northing			Easting			Elevation			Actual Hole Depth (Ft.)		Water Depth (Ft.)		Diameter of Drill Hole (In.)		Type of Sealant		Sealant Volume (Ft ³)		Sealant * (Lbs.)		How Drill Hole was Drilled		Date Hole was Abandoned	
1	2020-11	410,759.7	1,409,324.7	6,349.6	85	85	7 7/8 & 4 7/8	Plug Gel & Hole Plug	19	250.00	Surface Casing, Rotary and Cored	June 26, 2020															
2	2020-12	411,178.1	1,409,368.6	6,334.2	42	Dry	5 5/8 & 4 7/8	Plug Gel & Hole Plug	6	150.00	Rotary and Cored	June 27, 2020															
3	2020-13	411,498.4	1,409,510.8	6,308.7	25.0	Dry	5 5/8 & 4 7/8	Plug Gel & Hole Plug	4	100.00	Rotary and Cored	June 27, 2020															
4	2020-14	411,645.0	1,410,567.7	6,348.0	90.0	90	7 7/8, 5 5/8 & 4 7/8	Plug Gel & Hole Plug	19	200.00	Surface Casing, Rotary and Cored	June 26, 2020															
5	2020-15	412,101.7	1,411,151.9	6,329.7	119.2	19	7 7/8, 5 5/8 & 4 7/8	Plug Gel & Hole Plug	23	250.00	Surface Casing, Rotary and Cored	June 28, 2020															
6	2020-16	411,567.0	1,412,514.1	6,348.0	65.1	9	5 5/8 & 4 7/8	Plug Gel & Hole Plug	10	100.00	Rotary and Cored	June 29, 2020															
7	2020-17	412,319.1	1,412,216.6	6,351.7	159.0	159	5 5/8 & 4 7/8	Plug Gel & Hole Plug	26	250.00	Rotary and Cored	June 28, 2020															
8	2020-18	411,848.7	1,408,428.4	6,328.2	68.0	Dry	7 7/8, 5 5/8 & 4 7/8	Plug Gel & Hole Plug	14	150.00	Surface Casing, Rotary and Cored	June 27, 2020															
9	2020-19	413,002.9	1,416,852.9	6,359.0	60.0	60	5 5/8 & 4 7/8	Plug Gel & Hole Plug	10	200.00	Rotary and Cored	June 25, 2020															
10	2020-110	412,558.7	1,417,369.1	6,428.3	75.0	75	7 7/8, 5 5/8 & 4 7/8	Plug Gel & Hole Plug	15	100.00	Surface Casing, Rotary and Cored	June 24, 2020															
11	2020-111	412,512.9	1,416,622.6	6,413.7	84.0	84	7 7/8, 5 5/8 & 4 7/8	Plug Gel & Hole Plug	16	250.00	Surface Casing, Rotary and Cored	June 25, 2020															
12	2020-112	411,231.1	1,409,259.1	6,337.3	50.0	Dry	5 5/8	Plug Gel & Hole Plug	9	100.00	Rotary	July 10, 2020															
13	2020-113	410,998.4	1,409,254.9	6,345.1	26.0	Dry	5 5/8	Plug Gel & Hole Plug	4	100.00	Rotary	July 10, 2020															
14	2020-114	410,803.7	1,409,227.0	6,352.2	42.0	Dry	5 5/8	Plug Gel & Hole Plug	7	450.00	Rotary	July 10, 2020															
15	2020-115	411,222.5	1,409,481.5	6,326.8	40.0	Dry	5 5/8	Plug Gel & Hole Plug	7	100.00	Rotary	July 11, 2020															
16	2020-116	411,035.8	1,409,542.4	6,328.5	40.0	Dry	5 5/8	Plug Gel & Hole Plug	7	100.00	Rotary	July 11, 2020															
17	2020-117	410,913.5	1,409,701.6	6,338.8	40.0	20	5 5/8	Plug Gel & Hole Plug	7	100.00	Rotary	July 11, 2020															
18	2020-11	410,728.7	1,412,251.5	6,374.7	105.0	69	7 7/8, 5 5/8 & 4 7/8	Plug Gel & Hole Plug	22	700.00	Surface Casing, Rotary and Cored	July 8, 2020															
19	2020-12	410,900.0	1,412,983.4	6,366.1	110.0	2	7 7/8, 5 5/8 & 4 7/8	Plug Gel & Hole Plug	23	1,000.00	Surface Casing, Rotary and Cored	July 8, 2020															
20	2020-13	410,889.0	1,413,745.0	6,400.7	118.0	118	5 5/8 & 4 7/8	Plug Gel & Hole Plug	19	150.00	Rotary and Cored	July 7, 2020															
21	2020-14	410,867.7	1,414,689.9	6,456.8	140.0	140	5 5/8 & 4 7/8	Plug Gel & Hole Plug	23	400.00	Rotary and Cored	July 10, 2020															
22	2020-15	410,332.2	1,414,183.2	6,462.3	98.0	Dry	5 5/8 & 4 7/8	Plug Gel & Hole Plug	16	250.00	Rotary and Cored	July 9, 2020															
23	2020-16	410,365.8	1,413,535.6	6,415.6	68.0	68	5 5/8 & 4 7/8	Plug Gel & Hole Plug	11	250.00	Rotary and Cored	July 9, 2020															
24	2020-17	410,219.1	1,412,357.9	6,405.0	62.0	26	5 5/8 & 4 7/8	Plug Gel & Hole Plug	10	300.00	Rotary and Cored	July 9, 2020															
25	2020-11	406,383.2	1,440,377.5	7,056.7	130.0	60	7 7/8, 5 5/8 & 4 7/8	Plug Gel & Hole Plug	26	250.00	Surface Casing, Rotary and Cored	June 22, 2020															
26	2020-12	406,599.1	1,441,085.8	7,136.1	230.0	100	7 7/8, 5 5/8 & 4 7/8	Plug Gel & Hole Plug	42	200.00	Surface Casing, Rotary and Cored	June 23, 2020															
27	2020-13	406,090.4	1,441,101.9	7,096.4	110.0	30	7 7/8, 5 5/8 & 4 7/8	Plug Gel & Hole Plug	21	250.00	Surface Casing, Rotary and Cored	June 24, 2020															
28	2020-14	405,914.2	1,440,500.7	7,133.3	150.0	Dry	7 7/8, 5 5/8 & 4 7/8	Plug Gel & Hole Plug	27	200.00	Surface Casing, Rotary and Cored	June 22, 2020															

Hole ID	Northing	Easting	Elevation	Actual Hole Depth (Ft.)	Water Depth (Ft.)	Diameter of Drill Hole (in.)	Type of Sealant	Sealant Volume (ft ³)	Sealant* (lbs.)	How Drill Hole was Drilled	Date Hole was Abandoned	
29	2020-N1	410,417.9	1,427,289.4	6,645.5	277.0	75	8 3/4, 5 5/8 & 4 7/8	Plug Gel & Hole Plug	59	300	Steel Casing, Rotary and Cored	March 31, 2020
30	2020-N2	410,452.4	1,428,397.4	6,723.0	308.0	*	8 3/4, 5 5/8 & 4 7/8	Plug Gel & Hole Plug	73	350	Steel Casing, Rotary and Cored	March 8, 2020
31	2020-N3	410,544.7	1,428,931.9	6,804.5	370.0	133	9 7/8, 5 5/8 & 4 7/8	Plug Gel & Hole Plug	102	600	Steel Casing, Rotary, Ream and Cored	June 21, 2020
32	2020-N4	410,265.9	1,429,360.9	6,798.3	300.0	*	8 3/4, 5 5/8 & 4 7/8	Plug Gel & Hole Plug	73	350	Steel Casing, Rotary and Cored	March 11, 2020
33	2020-N5	410,368.1	1,429,862.3	6,825.8	328.3	*	8 3/4, 5 5/8 & 4 7/8	Plug Gel & Hole Plug	82	400	Steel Casing, Rotary and Cored	March 16, 2020
34	2020-N6	410,179.3	1,430,331.1	6,862.6	325.0	*	8 3/4, 5 5/8 & 4 7/8	Plug Gel & Hole Plug	90	400	Steel Casing, Rotary and Cored	March 28, 2020
35	2020-N7	410,145.5	1,428,545.4	6,753.6	288.3	*	8 3/4, 5 5/8 & 4 7/8	Plug Gel & Hole Plug	68	350	Steel Casing, Rotary and Cored	February 29, 2020
36	2020-N8	409,514.8	1,429,635.2	6,840.2	241.8	*	8 3/4, 5 5/8 & 4 7/8	Plug Gel & Hole Plug	52	250	Steel Casing, Rotary and Cored	February 25, 2020
37	2020-N9	409,128.7	1,428,528.1	6,801.3	209.0	38	7 7/8 & 4 7/8	Plug Gel & Hole Plug	33	400	Surface Casing and Cored	June 5, 2020
38	2020-N10	408,849.9	1,429,332.9	6,867.7	199.0	17	7 7/8 & 4 7/8	Plug Gel & Hole Plug	30	550	Surface Casing and Cored	June 3, 2020
39	2020-N11	408,696.5	1,430,578.5	6,963.0	226.0	61	9 7/8, 5 5/8 & 4 7/8	Plug Gel & Hole Plug	52	350	Steel Casing, Rotary, Ream and Cored	June 11, 2020
40	2020-N12	408,880.2	1,426,735.8	6,772.8	203.0	46	9 7/8, 5 5/8 & 4 7/8	Plug Gel & Hole Plug	33	600	Steel Casing, Rotary, Ream and Cored	June 19, 2020
41	2020-N13	408,532.8	1,427,959.8	6,844.1	199.0	26	7 7/8 & 4 7/8	Plug Gel & Hole Plug	31	450	Surface Casing and Cored	June 6, 2020
42	2020-N14	408,185.4	1,429,588.7	6,971.5	215.0	89	7 7/8 & 4 7/8	Plug Gel & Hole Plug	33	450	Surface Casing and Cored	June 9, 2020
43	2020-N15	407,780.7	1,430,694.0	7,077.5	188.0	88	9 7/8, 5 5/8 & 4 7/8	Plug Gel & Hole Plug	44	550	Steel Casing, Rotary, Ream and Cored	June 16, 2020
44	2020-N16	408,214.9	1,426,831.4	6,840.3	199.0	54	9 7/8, 5 5/8 & 4 7/8	Plug Gel & Hole Plug	34	300	Steel Casing, Rotary, Ream and Cored	June 18, 2020
45	2020-N17	408,017.1	1,427,917.2	6,931.8	219.0	76	7 7/8 & 4 7/8	Plug Gel & Hole Plug	32	550	Surface Casing and Cored	June 8, 2020

Contractor Name: Himes Drilling Co. INC.

License Number: 736

Contractor Name: Sharpe Drilling Company

License Number: 01W/D108

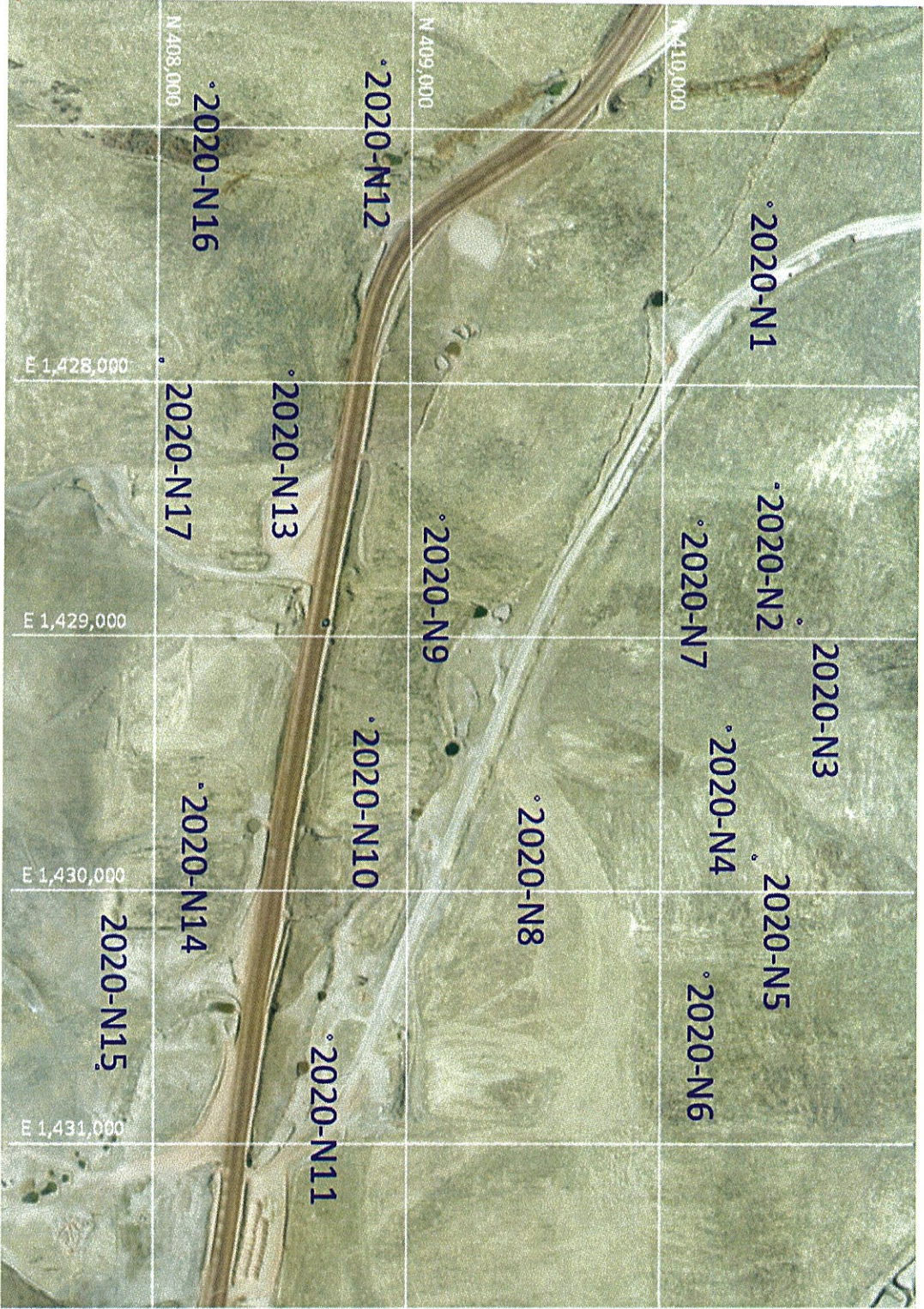
Assumptions:

Plug Gel-Bentonite Product 50 lbs. of Plug Gel per 100 gallons of water, 3.74 lbs./ft^3
Hole Plug-Bentonite Product 50 lb. Bags

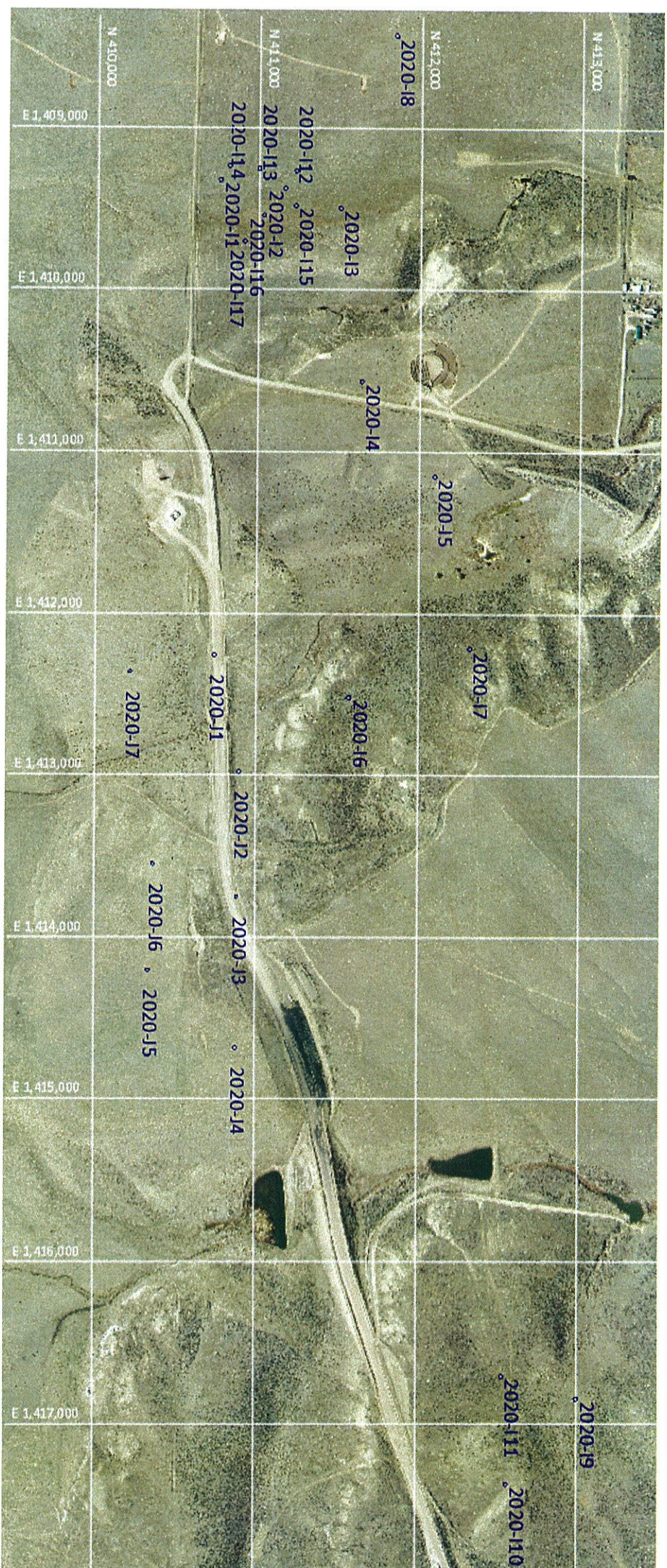
*Hole was drilled during winter, it was abandoned immediately after it was drilled. There was no water level to measure.



Trapper Mining Inc.
2020 Drill Hole Locations L Pit Area



Trapper Mining Inc.
2020 Drill Hole Locations N Pit Area



Trapper Mining Inc.
2020 Drill Hole Locations I and J Pit Area