




**MINERALS PROGRAM INSPECTION REPORT**  
**PHONE: (303) 866-3567**

The Division of Reclamation, Mining and Safety has conducted an inspection of the mining operation noted below. This report documents observations concerning compliance with the terms of the permit and applicable rules and regulations of the Mined Land Reclamation Board.

<b>MINE NAME:</b> Gold Hill Mill	<b>MINE/PROSPECTING ID#:</b> M-1994-117	<b>MINERAL:</b> Gold and silver	<b>COUNTY:</b> Boulder
<b>INSPECTION TYPE:</b> Monitoring	<b>INSPECTOR(S):</b> Amy Eschberger	<b>INSP. DATE:</b> July 14, 2020	<b>INSP. TIME:</b> 10:00
<b>OPERATOR:</b> Colorado Milling Company, LLC	<b>OPERATOR REPRESENTATIVE:</b> Avrom Howard and Lewis Perkins	<b>TYPE OF OPERATION:</b> 110(2) - Hard Rock Limited Impact	

<b>REASON FOR INSPECTION:</b> Normal I&E Program	<b>BOND CALCULATION TYPE:</b> None	<b>BOND AMOUNT:</b> \$77,546.00
<b>DATE OF COMPLAINT:</b> NA	<b>POST INSP. CONTACTS:</b> None	<b>JOINT INSP. AGENCY:</b> None
<b>WEATHER:</b> Clear	<b>INSPECTOR'S SIGNATURE:</b> 	<b>SIGNATURE DATE:</b> August 12, 2020

**The following inspection topics were identified as having Problems or Possible Violations. OPERATORS SHOULD READ THE FOLLOWING PAGES CAREFULLY IN ORDER TO ASSURE COMPLIANCE WITH THE TERMS OF THE PERMIT AND APPLICABLE RULES AND REGULATIONS. If a Possible Violation is indicated, you will be notified under separate cover as to when the Mined Land Reclamation Board will consider possible enforcement action.**

**INSPECTION TOPIC:** Availability Of Records

**PROBLEM:** The Annual Report and Map submitted by the operator on July 28, 2020 includes inaccurate or incomplete information (as described in this inspection report). This is a problem at this time pursuant to Rule 1.15(1), which requires the operator to submit an Annual Report that includes all information specified on the Annual Report form.

**CORRECTIVE ACTIONS:** Because the operator is not able to make revisions to an Annual Report and Map that have already been submitted through the ePermitting system, the operator shall submit to the Division (via mail or email) an addendum to the July 28, 2020 submittal which includes updated (and accurate) information for the items identified in this inspection report, including an updated Annual Report Map which accurately depicts the full permit boundary and location of acreages specified in Items 8-12 and 15 from the Annual Report form.

**CORRECTIVE ACTION DUE DATE:** September 11, 2020

## **OBSERVATIONS**

This was a normal monitoring inspection of the Gold Hill Mill (Permit No. M-1994-117) conducted by Amy Eschberger of the Division of Reclamation, Mining and Safety (Division). The operator was represented by Avrom Howard and Lewis Perkins during the inspection. The site is located approximately 10 miles northwest of Boulder, CO in Boulder County. Access to the site is off of Sunshine Canyon Drive. **Photos 1-18** taken during the inspection are included with this report.

This is a 110(2) operation permitted for 9.2 acres (see 2 enclosed Google Earth images of site), as of Amendment No. 1 (AM-1; approved on September 18, 2019), to mill gold and silver ores. The permit area consists of three areas (see 4 enclosed maps submitted with AM-1): the mill site (at the top of Gold Hill), the water pipeline (which runs up Lick Skillet Gulch from Left Hand Creek to the Times Mine portal), and an area adjacent to the creek (where water will be pumped from the creek). The mill site includes a mill facility, a small tailings impoundment, and an ore stockpile. The water pipeline will be 2 inches in diameter and approximately 4,700 feet in length, and will replace existing 2- and 3-inch diameter pipelines that were installed on the easement in the 1980s and 1990s. AM-1 added the water pipeline and associated infrastructure and the Times Mine portal to the permit to allow the operator to pump water from the creek to the portal to store in the Times and Wynona Mines for use by the mill operation. The affected lands consist of several patented mining claims owned by Colorado Milling Company, LLC and some unpatented claims managed by the U.S. Bureau of Land Management (BLM). The pipeline easement is on land owned by Boulder County Parks and Open Space. Access to the pipeline will be via three historic mine roads off Lickskillet Road and one historic mine road off Sunshine Canyon Drive (for the Times Mine portal area). The 0.218 acre area near the creek will be accessed via a 3 foot wide path off Lickskillet Road which is located entirely on the operator's Gold Gulch unpatented lode mining claim. This access was included in the permit area and comprises 0.009 acre.

The approved post-mining land use for the site is forestry. The reclamation plan includes removing the pipeline and associated infrastructure, cementing the PVC pipes that extend through the existing 3 foot thick bulkhead installed in the Times Mine adit, sealing the Times Mine portal, removing the fencing from around the tailings impoundment at the mill site, grading the tailings to nearly flat, placing a 2-foot thick rock capillary barrier on top of the tailings (material derived from the mine dump screening operation), replacing 3-4 inches of topsoil across the top of the rock capillary barrier, and revegetating disturbed areas with grasses, shrubs, and trees. The footprint of the ore stockpile will not be revegetated for reclamation as it will be used for equipment storage and parking. The mill building will remain after reclamation. The Wynona Mine shaft and Times Mine drill hole will not be sealed for reclamation as they may be used as emergency water sources for forest fire protection. The existing access road will remain after reclamation.

Mr. Howard has recently taken over the permitting and inspection obligations for the Gold Hill Mill (M-1994-117) and Cash & Who Do Mines (M-1983-141) permits held by Colorado Milling Company, LLC. Therefore, the Division strongly recommends Mr. Howard review these permit files, which are available to the public through the online imaged document system (Laserfiche) accessed from the Division's website at: <https://dnrweblink.state.co.us/drms/search.aspx?dbid=0>. In the imaged document system, the permit number must be entered into the "Permit No" field with no dashes or spaces, like this "M1994117". After hitting enter, all available permit documents will load. Helpful hint: the documents can be sorted by date by clicking on the "Doc Date" column header (click twice to sort documents by newest to oldest).

The Division especially recommends Mr. Howard review the Gold Hill Mill documents associated with the recently approved AM-1, as there were several commitments made by the operator regarding the mill operation, water storage in the Times and Wynona Mines, monitoring of the existing bulkhead installed in the Times Mine adit, and additional water level and water quality monitoring of the mine pool. Some of these commitments

include actions to take place within a specified timeframe prior to operations recommencing (i.e., collecting a grab sample of the current mine pool and providing the water quality results to the Division a minimum of 60 days prior to pumping out the water for mill use or pumping additional water behind the Times Mine bulkhead).

The Division's approval of AM-1 included the stipulation that prior to commencing with operations at the site, a mine pool drawdown plan must be submitted in the form of a Technical Revision for Division review and approval. In order to develop the drawdown plan, the operator must first perform a pumping test on the Times and Wynona Mines to help determine the mine pool volume above the collar of the winze that connects the Times Mine and Wynona Mine workings. Water pumped from the Wynona Mine shaft will be pumped into the two steady head tanks located inside the mill facility, where a totalizing flow meter will be installed to measure the discharge from the Wynona Mine shaft well. All of the mine water collected in the two steady head tanks will be contained in the large thickener tank located on the Flotation Level inside the mill facility, which has the capacity to hold more than 50,000 gallons of water. No mine water will be discharged during the pumping test.

Because the site is still under a Temporary Suspension by the BLM (as of April 2013), the operator must demonstrate to the Division, prior to initiating the pumping test, that the BLM has authorized this activity to occur at the site. Additionally, no mining or milling activities can occur at the site until the BLM has received a completed Plan of Operations from the operator and a NEPA analysis (ROD) is approved. Prior to recommencing with milling activities at the site, the operator must demonstrate to the Division that a Plan of Operations is in place and the BLM has lifted the Temporary Suspension, authorizing the operation to proceed with mining/milling activities.

The operator should also be reminded the permit will need to be converted to a Designated Mining Operation (DMO) prior to using or storing any designated chemicals at the site. Rule 1.1(19) defines "designated chemicals" as toxic or acidic chemicals used within the permit area in extractive metallurgical processing, the use of which, at certain concentrations, represents a potential threat to human health, property or the environment. This would include but is not limited to the following chemicals: cyanide, hydrochloric acid, phosphorus pentasulfide, potassium amyl xanthate (aka Aero 350 Xanthate), sodium dithiophosphate, sodium hydroxide, and sulfuric acid. This matter was discussed during the Division's review of AM-1, in which the operator agreed to convert the permit to a DMO prior to storing and/or using any designated chemicals at the site. If the operator intends to keep the affected area to less than 10 acres, a 110d permit application can be submitted for the conversion. However, if the operator wishes to expand the affected area to 10 acres or more, a 112d permit application must be submitted. All available permit applications can be downloaded from our website at: <https://www.colorado.gov/pacific/drms/minerals-program-forms>.

The site was not active during the inspection. The pipeline and associated infrastructure near the creek (approved in AM-1) have not yet been installed. The mill facility remains offline. The pumping test of the mine pool has not yet occurred. Mr. Howard informed the Division they are currently evaluating the site to determine if it is economically feasible to continue with operations. This evaluation includes performing surveys of existing mine dumps at the Gold Hill Mill and Cash & Who Do Mines, sampling existing mine dumps, assessing site infrastructure, and researching site history and permitting obligations. Deere & Ault Consultants, Inc., which prepared the Times Mine bulkhead evaluation submitted with AM-1, was expected to be on site the day after this inspection to re-evaluate the Times Mine bulkhead and required water infrastructure.

This site had been in Temporary Cessation since 2013, and returned to Active status on June 13, 2018 (after the 5-year Temporary Cessation term expired). Per Rule 3.1.3(2), all reclamation shall be carried to completion by the operator with all reasonable diligence and each phase of reclamation shall be completed within 5 years from the date the operator informs the Division that such phase has commenced, or from the date the Division has evidence that mining or prospecting has ceased. This means that within 5 years of returning to Active status, by

June of 2023, the operator must either recommence with operations or complete final reclamation of the site. Mr. Howard anticipates they will be able to make this determination in 2021.

The tailings impoundment at the mill site is enclosed by wildlife (woven wire/mesh) fencing, with the entrance secured by a locked gate. Concrete barriers and an additional fence are installed along the western edge of the impoundment (within the perimeter fence). There was standing water present in the western portion of the impoundment from recent precipitation events. The water level was well below the required minimum two foot freeboard for the impoundment. The operator should be aware, the Division of Water Resources (DWR) requires any stormwater runoff intercepted by the operation, which is not diverted or captured in priority, to infiltrate into the ground and/or be released to the stream system within 72 hours. This may require a discharge permit from the CDPHE, WQCD. Otherwise, the operator will need to contact DWR to make replacements for evaporation. The required freeboard was maintained around the entire impoundment. However, along the (lower elevation) eastern edge of the impoundment, the tailings material was right at the two foot minimum. It has been documented in previous inspection reports that this area is subjected to intense crosswinds from the west which blow over the tailings pond. This has previously resulted in tailings material being dispersed off liner by the wind, typically to the east or southeast of the impoundment. The Division observed no evidence of tailings material deposited off liner. However, the impoundment should continue to be closely monitored, ensuring the minimum two foot freeboard is maintained and that no tailings material is being dispersed off liner.

Prior to recommencing with mill operations, the operator will need to clean out the dense cluster of cattails and other vegetation growing on the tailings deposited in the western portion of the impoundment. Additionally, any volunteer trees or other woody vegetation growing in the lined area should be removed as soon as possible, as the roots of these plants could potentially compromise the integrity of the liner as the plants grow larger. The operator estimates the remaining capacity in the tailings impoundment could accommodate up to approximately 5,000 tons of additional tailings. Depending on the results of the current site evaluation, the operator may need to increase the tailings storage capacity at the site. If this proposal includes an increase in affected lands, it must be submitted to the Division through the Amendment process.

The Division inspected the large ore stockpile stored southwest of the mill facility. This ore was derived from the Cash Mine located just downhill from the mill site, which is part of the Cash & Who Do Mines permit. This stockpile is estimated to contain approximately 35,000-40,000 tons of material that could be processed in the mill. A ramp connects the top of the stockpile to the two coarse ore bins located at the southwestern edge of the mill building. The stockpile appeared to be stable. No signs of acid rock drainage from the stockpile were observed. Mr. Howard pointed out the rocks on top of the stockpile painted pink which mark the locations where samples had recently been collected for laboratory analysis. The Division does not consider small-scale sampling of the dump material and sending these samples off-site for analysis to be in conflict with the current restrictions on operations. However, the operator is not currently authorized to process material on site (as discussed above).

During the Division's last inspection of the site on August 9, 2018, there was equipment being stored in an area south/southwest of the ore stockpile, which was located partially outside of the approved permit area. In its inspection report, the Division informed the operator that any equipment storage areas for the mill operation are considered affected lands, and therefore, must be included within the approved permit area. Since that time, the operator has removed the equipment from the site and/or relocated it to within the permit area.

The Division is citing a problem in this report (see page 1) for the Annual Report and Map submitted on July 28, 2020 (see enclosed), as the submittal includes the following inaccurate information:

- 1) For Item #4, the operator selected "No activity yet", which is inaccurate as activities have occurred at



the site since the permit was issued. The operator should select "Yes, activity has begun" and provide information for Items #8-13 accordingly. The Division realizes the operator may have selected "No activity yet" because the mill has not been active for many years and the operation recently came out of Temporary Cessation. However, this question is pertaining to any activities and/or disturbances having occurred at the site since the permit was issued.

- 2) For Item #6, the operator selected "Yes" that the mine has been granted approval of Temporary Cessation status, which is incorrect as the operation returned to Active status on June 13, 2018. The Division realizes the question is worded in a way that may be interpreted as asking if the operation has ever been granted Temporary Cessation. However, this question is asking if the operation is currently in Temporary Cessation, which is not the case with this operation.
- 3) For Item #7, the operator selected "No" that the mine has not been granted approval for intermittent operation, which is incorrect as the operation has been approved to operate for less than 180 days per year (intermittent operation).
- 4) No information was provided for Items #8-13 (see enclosed Annual Report submitted in 2018 which includes the questions asked for these items). The operator must provide accurate information for these items, including the appropriate estimated acreages. For future ePermitting submittals, when the operator selects "Yes, activity has begun" for Item #4, the fields for Items #8-13 will be available to fill out on the form.
- 5) For Item #22, the Annual Report Map submitted only shows the permit boundary approved for the mill site, and does not depict the entire permit boundary approved in AM-1. The Division realizes no disturbances have occurred in the new permit areas (water pipeline, Times Mine portal, area near Left Hand Creek) since AM-1 was approved. However, at least one of the maps submitted with the Annual Report should depict the entire permit boundary. Given the large area covered by the three portions of the approved permit area, once disturbances are planned to occur or have occurred in these areas, the Division recommends the operator submit separate maps showing a closer view of each area (as was submitted in AM-1) to depict the required information.

Because the operator is not able to make revisions to an Annual Report and Map that have already been submitted through the ePermitting system, the operator will need to submit to the Division (via mail or email) an addendum to the July 28, 2020 submittal which includes updated (and accurate) information for the items identified above, including an updated Annual Report Map which accurately depicts the full permit boundary and location of acreages specified in Items 8-12 and 15 from the Annual Report form.

This concludes the report.

*Any questions or comments regarding this inspection report should be forwarded to Amy Eschberger at the Colorado Division of Reclamation, Mining and Safety, 1313 Sherman Street, Room 215, Denver, CO 80203, via telephone at 303-866-3567, ext. 8129, or via email at [amy.eschberger@state.co.us](mailto:amy.eschberger@state.co.us).*

## PHOTOGRAPHS



**Photo 1.** View looking west along access road, showing north side of ore stockpile (at left), stable with good vegetative cover.



**Photo 2.** View looking northeast across top of ore stockpile, showing ramp (in background) connecting the stockpile to two coarse ore bins at southwestern edge of mill building.





**Photo 3.** Closer view of top of ore stockpile, showing rock painted pink marking location where sample was recently collected for laboratory analysis.



**Photo 4.** View looking southwest across top of ore stockpile stored southwest of mill facility.





**Photo 5.** View looking northeast along south side of ore stockpile, which is stable with some volunteer pine trees growing on its slopes.



**Photo 6.** View looking southwest, showing Wynona Mine shaft well head (circled) located just southwest of mill facility.





**Photo 7.** View of entrance to tailings impoundment area secured by locked gate.



**Photo 8.** View looking northeast across northern edge of tailings impoundment, showing minimum freeboard of two feet is maintained. Note dense cluster of cattails which need to be removed prior to recommencing operations. Also note standing water present.





**Photo 9.** View looking northeast across tailings impoundment. Note dense cluster of cattails which need to be removed prior to recommencing operations. Also note standing water present.



**Photo 10.** View looking northwest across western edge of tailings impoundment, showing minimum freeboard of two feet is maintained. Note dense cluster of cattails which need to be removed prior to recommencing operations. Also note fencing installed along western edge of impoundment.





**Photo 11.** View looking northeast across southern edge of tailings impoundment, showing minimum freeboard of two feet is maintained. Note standing water present.



**Photo 12.** View looking west at back (southeastern) side of mill building (from within tailings impoundment enclosure).





**Photo 13.** View inside mill building showing closed-circuit crushing plant. Mill remains offline in accordance with current DRMS and BLM restrictions.

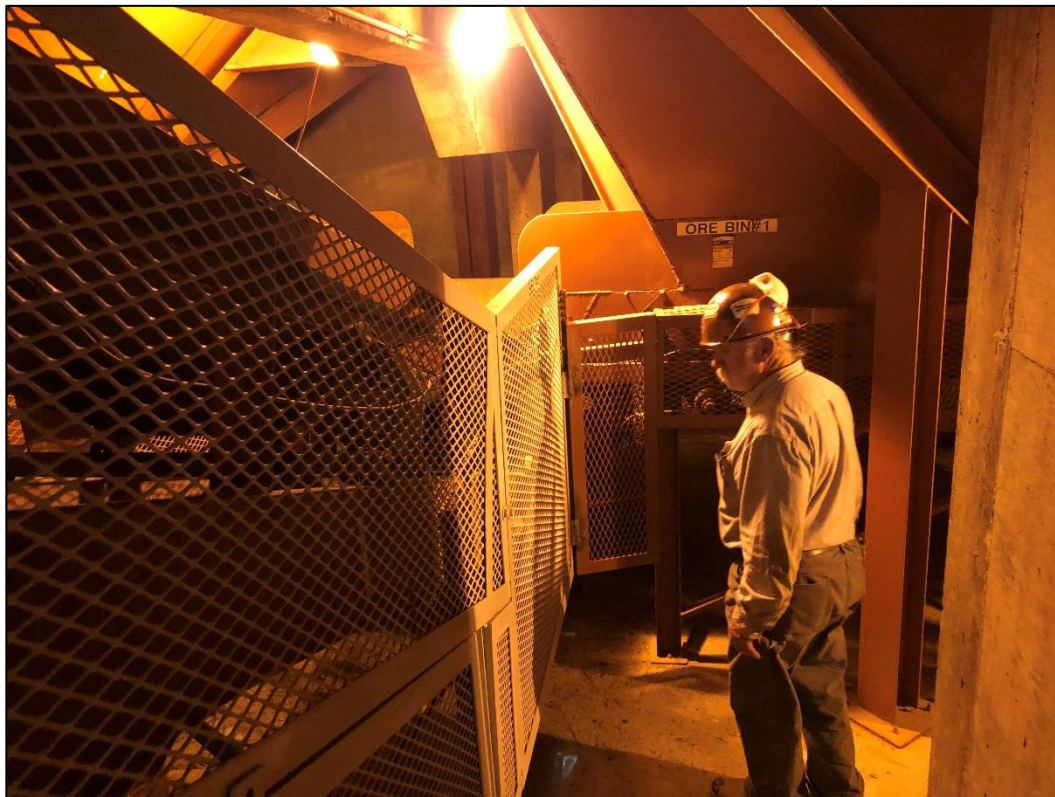


**Photo 14.** View inside mill building showing large thickener tank. Mill remains offline in accordance with current DRMS and BLM restrictions.





**Photo 15.** View inside mill building showing closed-circuit grinding plant. Mill remains offline in accordance with current DRMS and BLM restrictions.



**Photo 16.** View inside mill building showing shoot from two outside coarse ore bins (at southwestern edge of mill building). Mill remains offline in accordance with current DRMS and BLM restrictions.





**Photo 17.** View looking west across small equipment storage area located west/southwest of ore stockpile. This area is within the approved permit area.



**Photo 18.** View looking south across area located south/southwest of ore stockpile (partially outside of approved permit area) where equipment has been removed.



### GENERAL INSPECTION TOPICS

The following list identifies the environmental and permit parameters inspected and gives a categorical evaluation of each

(AR) RECORDS----- <b>PB</b>	(FN) FINANCIAL WARRANTY----- <u>Y</u>	(RD) ROADS----- <u>Y</u>
(HB) HYDROLOGIC BALANCE----- <u>N</u>	(BG) BACKFILL & GRADING----- <u>N</u>	(EX) EXPLOSIVES----- <u>N</u>
(PW) PROCESSING WASTE/TAILING---- <u>Y</u>	(SF) PROCESSING FACILITIES----- <u>Y</u>	(TS) TOPSOIL----- <u>Y</u>
(MP) GENL MINE PLAN COMPLIANCE- <u>Y</u>	(FW) FISH & WILDLIFE----- <u>N</u>	(RV) REVEGETATION---- <u>N</u>
(SM) SIGNS AND MARKERS----- <u>Y</u>	(SP) STORM WATER MGT PLAN---- <u>N</u>	(RS) RECL PLAN/COMP-- <u>N</u>
(ES) OVERBURDEN/DEV. WASTE----- <u>N</u>	(SC) EROSION/SEDIMENTATION--- <u>Y</u>	(ST) STIPULATIONS----- <u>N</u>
(AT) ACID OR TOXIC MATERIALS----- <u>N</u>	(OD) OFF-SITE DAMAGE----- <u>N</u>	

Y = Inspected / N = Not inspected / NA = Not applicable to this operation / PB = Problem cited / PV = Possible violation cited

#### Inspection Contact Address

Avrom Howard  
Colorado Milling Company, LLC  
72 Brandywine Drive  
Williamsville, NY 14221

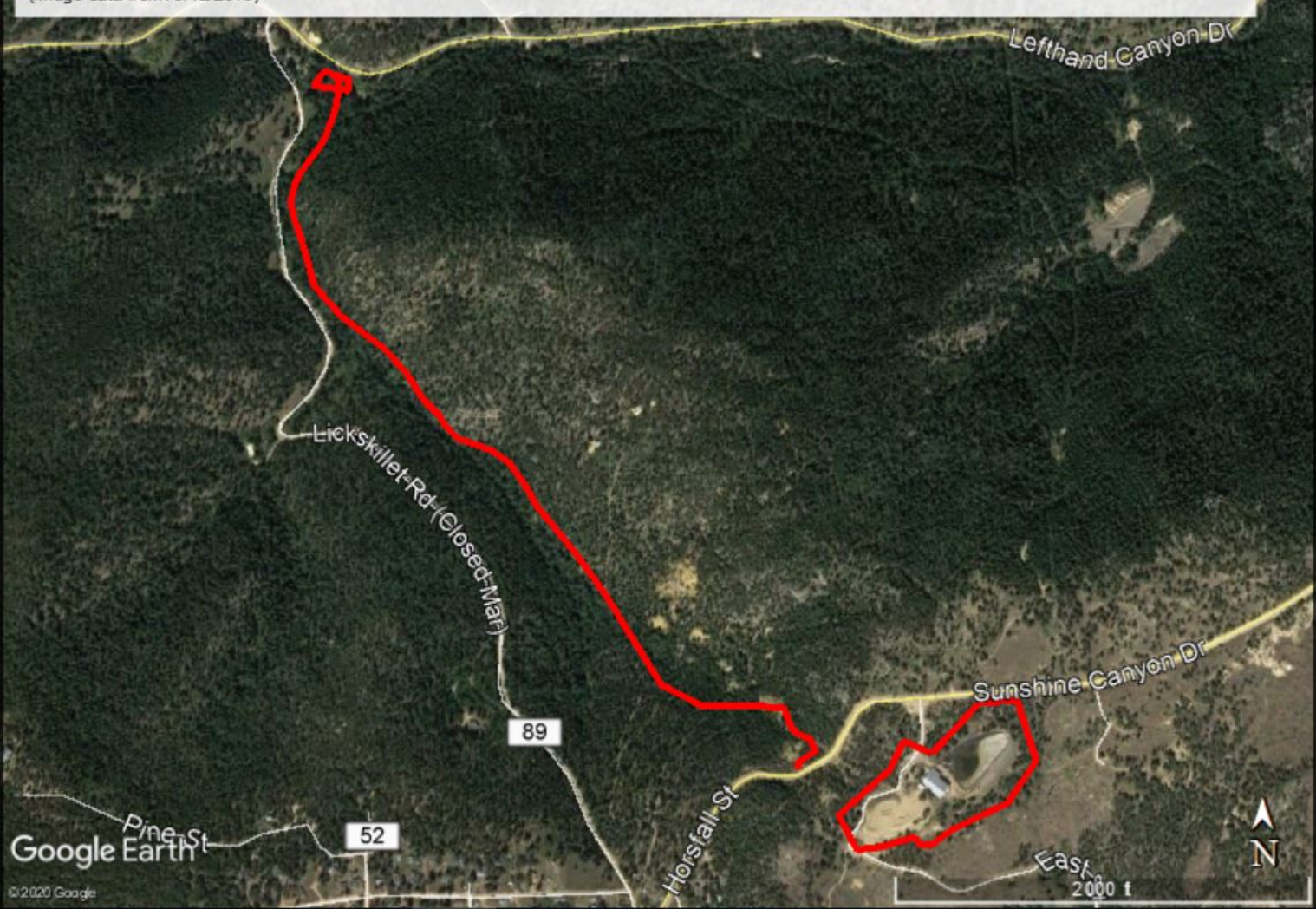
Encls: (2) Google Earth images of site, showing entire permit area and close-up of mill site  
Site Location Map submitted with AM-1, showing entire permit area  
Reclamation Plan Map submitted with AM-1, showing entire permit area  
Reclamation Plan Map submitted with AM-1, showing mill site  
Mining Plan Map submitted with AM-1, showing area near Left Hand Creek  
2020 Annual Report and Map submittal  
2018 Annual Report submittal

CC: Mike Bynum, Colorado Milling Company, LLC  
Stephanie Carter, BLM  
Michael Cunningham, DRMS

**M-1994-117 / Gold Hill Mill / Colorado Milling Company, LLC / 110(2) Hard Rock Permit**

Red Outline = 9.2 acres = Approved Permit Area (location approx. based on approved maps)

(Image data from: 9/12/2019)





**M-1994-117 / Gold Hill Mill / Colorado Milling Company, LLC / 110(2) Hard Rock Permit**

Red Outline = 9.2 acres = Approved Permit Area (location approx. based on approved maps; only 8.4 acre mill area shown)  
(Image data from: 9/12/2019)





COLORADO MILLING CO.-PERMIT NO. N-1994-117-LOCATION MAP-GOLD HILL QUAD  
LOCATED IN SECTIONS 2/11/12 T-1-N, R-72-W OF THE SIXTH P.M.,  
COUNTY OF BOULDER, STATE OF COLORADO

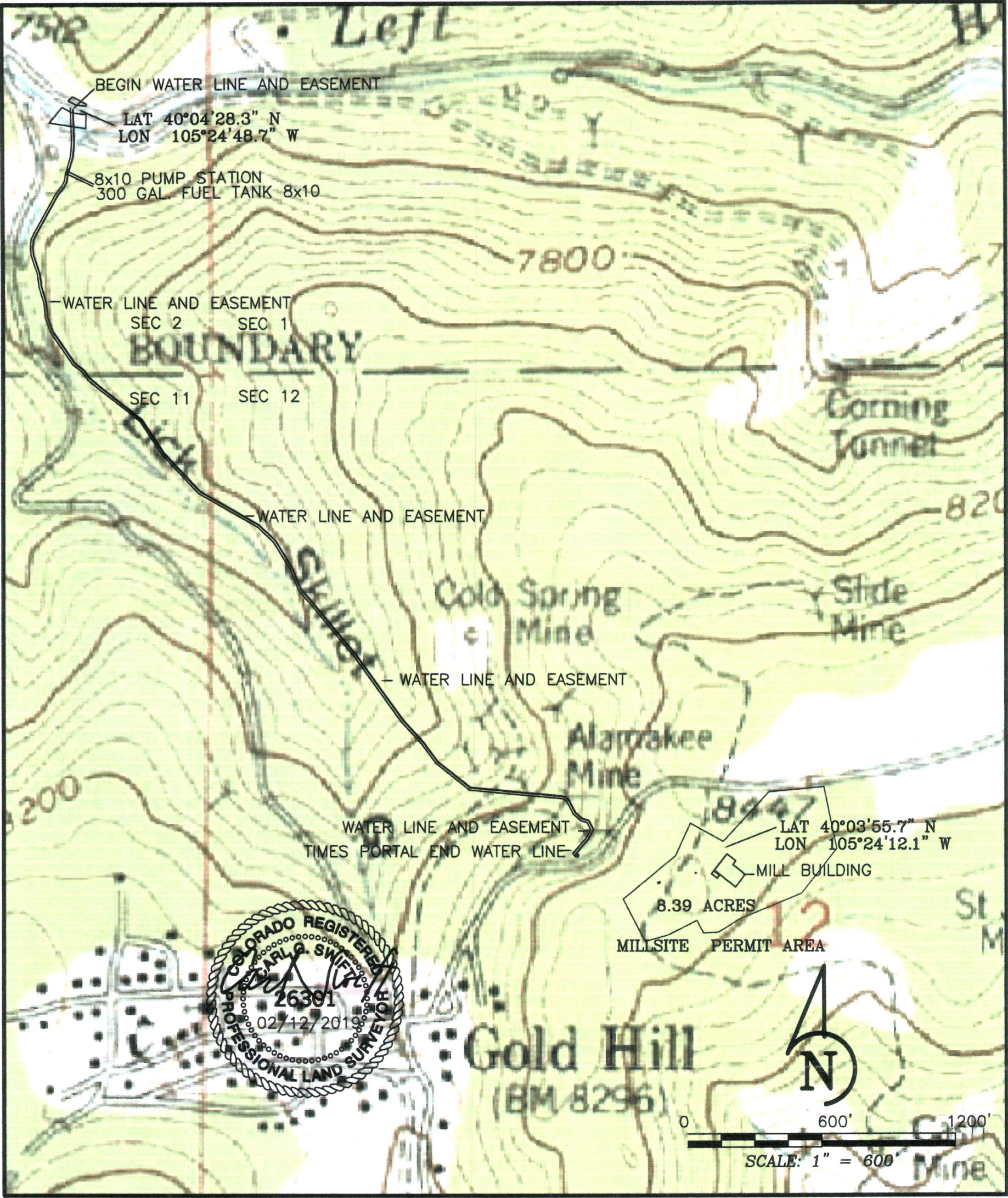
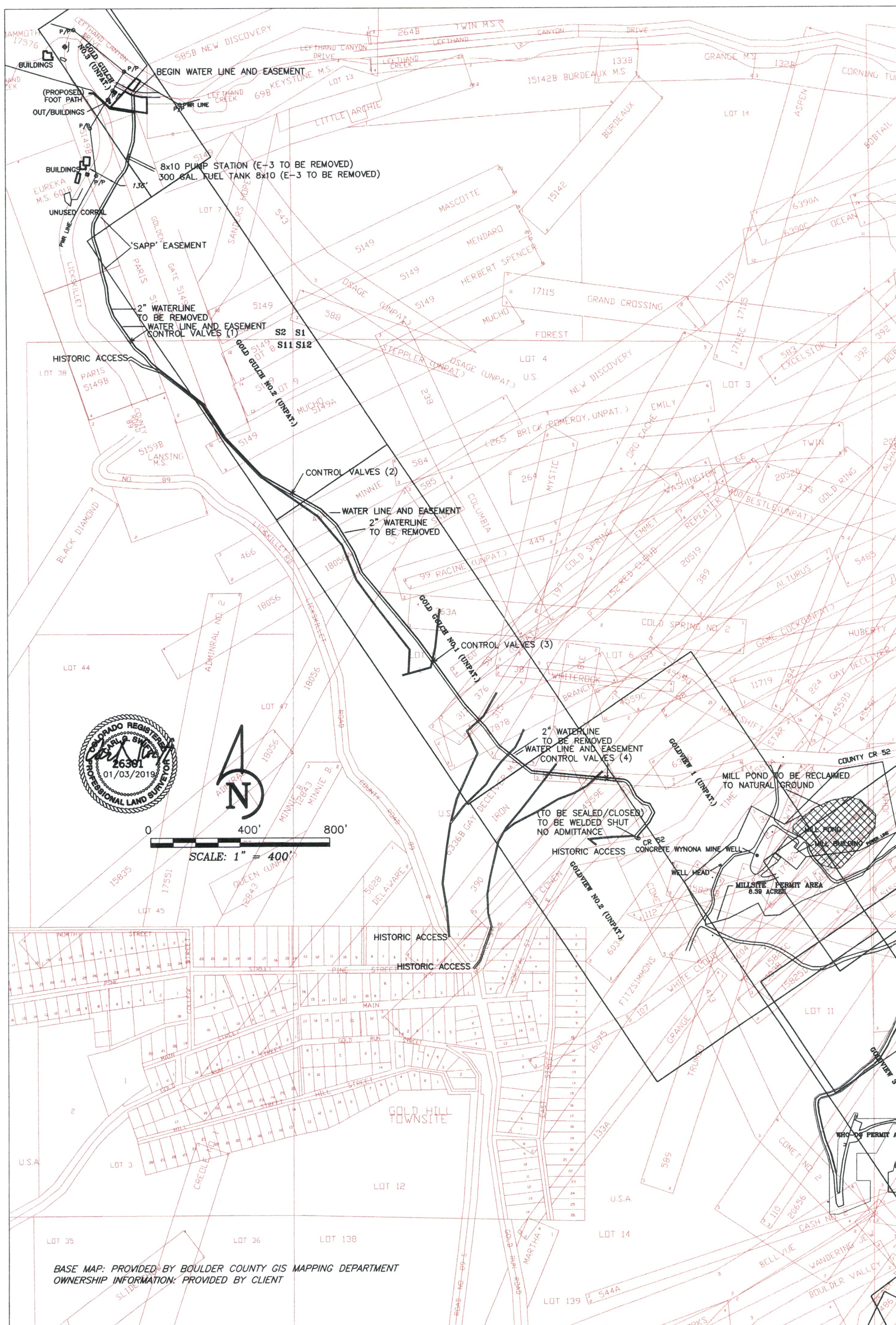


FIGURE 1  
A-2



**E-3 MINE RECLAMATION PLAN  
 COLORADO MILLING CO.- GOLD HILL MILL WATERLINE  
 LOCATED IN SECTIONS 2/11/12, T-1-N, R-72-W OF THE SIXTH P.M.,  
 COUNTY OF BOULDER, STATE OF COLORADO**





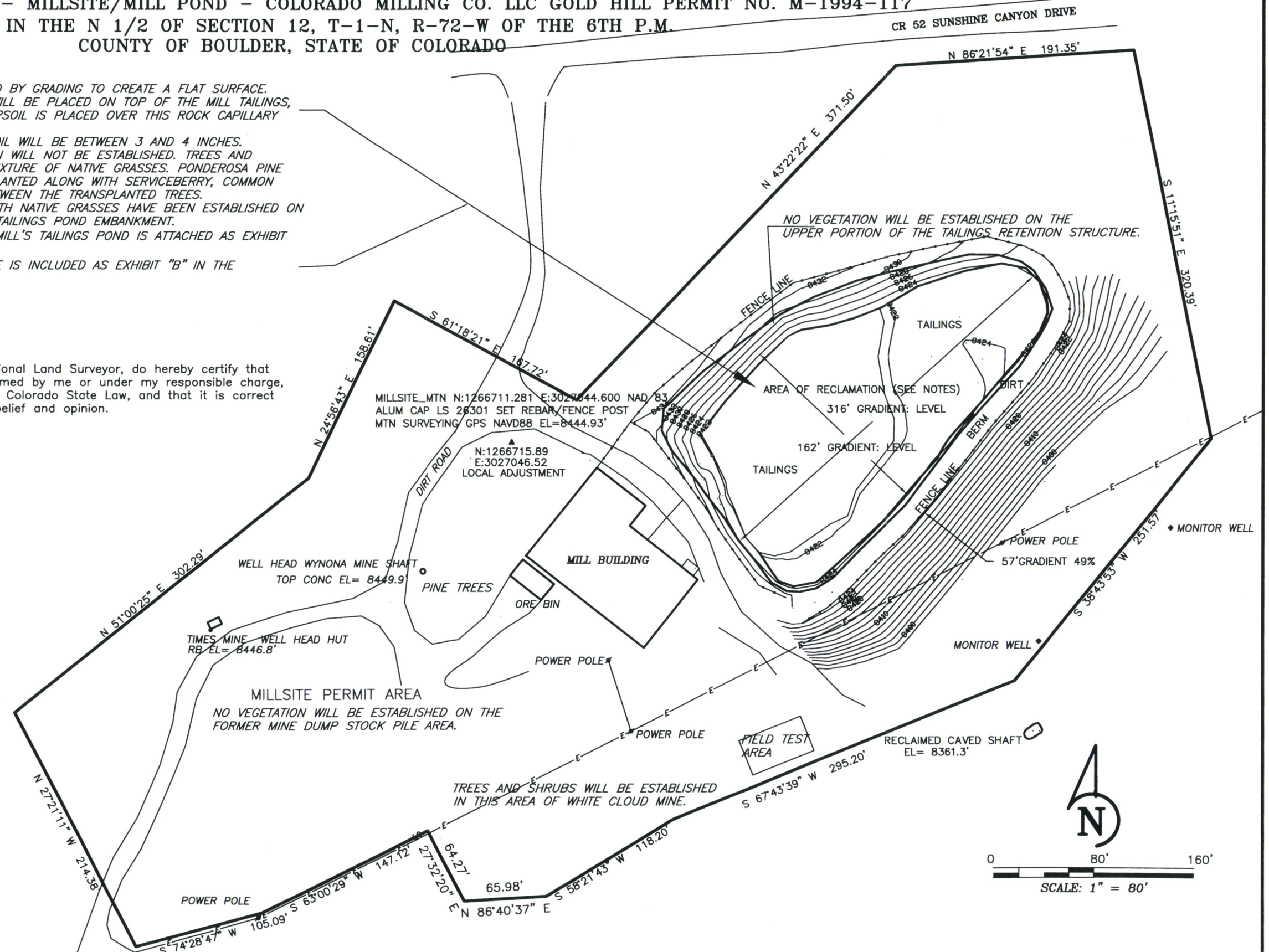
**E-5A -RECLAMATION PLAN MAP - MILLSITE/MILL POND - COLORADO MILLING CO. LLC GOLD HILL PERMIT NO. M-1994-117**  
**LOCATED IN THE N 1/2 OF SECTION 12, T-1-N, R-72-W OF THE 6TH P.M.**  
**COUNTY OF BOULDER, STATE OF COLORADO**

**NOTES: AREA OF RECLAMATION:**

1. INTERIOR TAILINGS POND WILL BE LEVELED BY GRADING TO CREATE A FLAT SURFACE.
2. A TWO FOOT ROCK CAPILLARY BARRIER WILL BE PLACED ON TOP OF THE MILL TAILINGS, BEFORE THE SALVAGED AND STOCKPILED TOPSOIL IS PLACED OVER THIS ROCK CAPILLARY BARRIER.
3. THE THICKNESS OF THE REPLACED TOPSOIL WILL BE BETWEEN 3 AND 4 INCHES.
4. THERE WILL NO AREAS WHERE VEGETATION WILL NOT BE ESTABLISHED. TREES AND SHRUBS WILL BE PLANTED ALONG WITH A MIXTURE OF NATIVE GRASSES. PONDEROSA PINE AND ENGLEMANN SPRUCE TREES WILL BE PLANTED ALONG WITH SERVICEBERRY, COMMON GOOSEBERRY AND KINNIKINNICK SHRUBS BETWEEN THE TRANSPLANTED TREES.
5. PONDEROSA AND ASPEN TREES ALONG WITH NATIVE GRASSES HAVE BEEN ESTABLISHED ON THE SOUTH FACING SLOPING SIDES OF THE TAILINGS POND EMBANKMENT.
6. THE RECLAMATION PLAN FOR GOLD HILL MILL'S TAILINGS POND IS ATTACHED AS EXHIBIT "A" TO THIS RESPONSE LETTER.
7. THE RECLAMATION PLAN FOR THE MILLSITE IS INCLUDED AS EXHIBIT "B" IN THE RESPONSE LETTER.

**SURVEYOR'S CERTIFICATE:**

I Carl G. Swift, a Colorado Licensed Professional Land Surveyor, do hereby certify that this EXISTING MILL POND SURVEY was performed by me or under my responsible charge, supervision and checking in accordance with Colorado State Law, and that it is correct to the best of my professional knowledge, belief and opinion.





E-1A MINING PLAN MAP FOR PERMIT AREA NEAR LEFT HAND CREEK  
 COLORADO MILLING CO. LLC.-GOLD HILL MILL WATERLINE  
 LOCATED IN SE/4 SECTION 2, T-1-N, R-72-W OF THE SIXTH P.M.,  
 COUNTY OF BOULDER, STATE OF COLORADO

POINT OF COMMENCEMENT  
 CORNER 1 MAMMOTH MILLSITE  
 LAT: 40.07487  
 LONG: 105.41332

GOLD GULCH NO.3 (UNPAT.)

MAMMOTH MILLSITE  
 MS 17576B

LEFTHAND CANYON DRIVE

NEW DISCOVER  
 MS 585B

POINT OF BEGINNING

PERMIT AREA 0.218 ACRES

LEFTHAND CREEK  
 SOUTHERLY EMBANKMENT

LICKSKILLET

PARIS 5149A

GOLDEN

GATE 5149A

14' WIDE WATER LINE EASEMENT

KEYSTONE MILL:

CORNER 5



0 50' 100'

SCALE: 1" = 50'

DATED: 09/12/2019

PUMP STATION AREA ON EASEMENT

8x10 PUMP STATION (E-3 TO BE REMOVED)

300 GAL. FUEL TANK 8x10 (E-3 TO BE REMOVED)

APPLICANT: COLORADO MILLING CO. LLC. GOLD HILL PERMIT NO. M-1994-117

PREPARED BY: MTN. SURVEYING LLC P.O. BOX 783 NEDERLAND COLORADO 80466



## Minerals Reclamation Permit Annual Report



**COLORADO**  
Division of Reclamation,  
Mining and Safety  
Department of Natural Resources

### General Information

#### Disclaimer

Under the terms of your NOI or Reclamation Permit and Colorado Statutes, you must submit Annual Fees and Annual Reports (including a map). You must pay the Annual Fee and submit an Annual Report each year until reclamation responsibility release is granted. The Annual Fee is not a renewal fee. The Fee and Report are for LAST YEAR'S mining and reclamation season, and MUST be paid even if your operation was inactive.

If you have requested reclamation responsibility release from the Division of Reclamation, Mining and Safety ("Division") but your permit is not released by the anniversary date listed below, the Annual Fee MUST be paid. If the permit is released before the anniversary date, then by Statute, it is not necessary to pay an Annual Fee or submit an Annual Report for that year.

Division records indicate the following is due:

#### Select Permit Number \*

Only Permit Numbers with currently due Annual Reports and Fees will be listed. If nothing appears in the dropdown box below, there are no annual fees or reports due for any of your permits.

M1994117

#### Select Anniversary Date \*

07-26-2020

**PLEASE REMEMBER TO CLICK "SUBMIT" AFTER YOU HAVE COMPLETED YOUR REPORT AND PAYMENT.**

**Please check the box indicating you have read and understand the terms of the Annual Report and Annual Fee \***

☒ I understand and agree to the terms

#### General Information

##### Permittee Name

Colorado Milling Company, LLC

##### Operation Name

Gold Hill Mill

Permit Number	Fee Due	Permit Acreage
M1994117	259.00	9.20

County	Anniversary Date	Current Bond Amount
Boulder	07-26-2020	77546.00



Proceed

## Contact Information

Here is the contact information we have on file for this permit. If any of it is inaccurate, you will have the opportunity to correct it after this form has been submitted.

1. Upon submission of this form you will be presented with a link to the contact information update form.
2. There is a question asking about the accuracy of this information at the bottom of this page. Indicating that it is inaccurate will send an e-mail to notify your administrator to make the appropriate changes.

### Permittee Contact Information

**Permittee Contact Name**

Avrom Howard

**Permittee Company**

Colorado Milling Company, LLC

**Permittee Address 1**

72 Brandywine Drive

**Permittee Address 2**

Permittee City	Permittee State	Permittee Zip
Williamsville	NY	14221

Permittee Phone #	Permittee Fax #
9702349757	

**Permittee Contact Email Address**

aeh@nebuconsulting.com

### Permitting Contact Info

**Permitting Contact Name**

Avrom Howard

**Permitting Company**

Colorado Milling Company, LLC

**Permitting Address 1**

72 Brandywine Drive

**Permitting Address 2**

Permitting City	Permitting State	Permitting Zip
Williamsville	NY	14221

Permitting Phone #	Permitting Fax #

9702349757

**Permitting Contact Email Address**

aeh@nebuconsulting.com

## Inspection Contact Info

**Inspection Contact Name**

Avrom Howard

**Inspection Company**

Colorado Milling Company, LLC

**Inspection Address 1**

72 Brandywine Drive

**Inspection Address 2**

---

**Inspection City**

Williamsville

**Inspection State**

NY

**Inspection Zip**

14221

---

**Inspection Phone #**

9702349757

**Inspection Fax #**

**Inspection Contact Email Address**

aeh@nebuconsulting.com

**Is the Permitting Contact information listed above correct? If it is not correct your organization's Administrator will receive an email notification. \***

☒ Yes ☐ No

Previous

Proceed

# Annual Report Questions

## Annual Report Questions

Information contained in this report is required and will be reviewed by the Division upon receipt and prior to the next compliance inspection of the site. If, while completing this report, you learn that your site is not in compliance with the rules and the act, it is advisable that the issues be rectified promptly to avoid possible enforcement action.

**1. Is the site identification sign posted in accordance with Rule 3.1.12(1). \***

☒ Yes ☐ No

**2. Is the affected area boundary clearly marked in accordance with Rule 3.1.12(2). \***

☒ Yes ☐ No

**3. Is the mine site in final reclamation (all material extraction and stockpile removal is complete)? \***

If "YES," please note time limits related to completion of reclamation, Rule 3.1.3.

☐ Yes ☒ No

**4. Please enter the date of last activity at the mine (excavation, processing or hauling). Or, if activity has not yet begun, please indicate so. \***

☒ No activity yet ☐ Yes, activity has begun

**By answering 'no' to question number 4, you are certifying there has been no disturbance to the permitted lands. Please be aware mining activity includes, but is not limited to, mineral extraction, topsoil and overburden removal, equipment staging, and construction of offices, scale houses, processing facilities or roads. \***

☒ Certify

**5. Does the mine operate more than 180 days per year? \***

If "NO", please review Rule 1.13 to assure that your mine is in compliance.

☐ Yes ☒ No

**6. Has this mine been granted approval of TEMPORARY CESSATION Status? \***

☒ Yes ☐ No

**7. Has this mine been granted approval for INTERMITTENT OPERATION? \* (?)**

☐ Yes ☒ No

Previous

Proceed

## Annual Report Questions

**14. Is weed control being conducted in accordance with an approved Weed Control Plan? \***

If "YES", indicate the weed species, control area, control type, application rate and treatment date on the report map.

☒ Yes ☐ No ☐ N/A

**15. Is adequate topsoil reserved for reclamation, based on your approved permit? \***

If "NO", please explain

☒ Yes ☐ No ☐ N/A

**16. Is the reserved topsoil vegetated/stabilized in accordance with Rule 3.1.9(1)? \***

If "NO", please explain

☒ Yes ☐ No ☐ N/A

**17. If mining has exposed groundwater, is the site in compliance with the approved mining plan and Office of the State Engineer (Well Permit, S.W.S.P., and/or Permanent Augmentation Plan)? \***

☐ Yes ☐ No ☒ N/A

**18. Are all hazardous materials stored within approved spill containment structures? \***

☒ Yes ☐ No ☐ N/A

**19. Is your financial warranty value sufficient to cover the cost to complete reclamation? \***

☒ Yes ☐ No ☐ N/A

**20. Is your basis for legal right to enter still valid? \***

☒ Yes ☐ No

**21. Does your permit require you to submit monitoring information annually? \***

☐ Yes ☒ No ☐ N/A

**22. As required by Colorado Mined Land Reclamation Act and/or Colorado Land Reclamation Act for the Extraction of Construction Materials (C.R.S.34-32-116 or 34-32.5-116), attach a map to this report that accurately depicts the permit boundary, current affected area boundary and location of the acreages specified in items 8-12 and 15. \***

Only PDF formatted files can be uploaded.

DRMSSite Plan map.PDF

2.05MB

**23. If you have supplemental information you would like to provide, please upload it here.**

Only PDF formatted files can be uploaded.

**24. Rule 5.7 requires submittal of final abandonment reports within 60 days for any drill hole(s) with artesian flows and no later than 12 months for all other completed drill holes. If drill holes are a component of your exploration/prospecting activities, have they been properly abandoned?**

☐ Yes ☐ No ☒ NA

Previous

Proceed

## Annual Fee Payment

### Annual Fee Payment

**Payment Confirmation Number** \* (?)

145134766

### Signature

**I, the undersigned, hereby state that the information provided in this report is true and accurate, and that site operations are being conducted in accordance with the Division approved mining and reclamation plans. \***



I Agree

If you do not see the "Submit" button after completing your report, try to un-check and then re-check the "I Agree" box.

Previous





## Minerals Reclamation Permit Annual Report



**COLORADO**  
Division of Reclamation,  
Mining and Safety  
Department of Natural Resources

### Disclaimer

Under the terms of your NOI or Reclamation Permit and Colorado Statutes, you must submit Annual Fees and Annual Reports (including a map). You must pay the Annual Fee and submit an Annual Report each year until reclamation responsibility release is granted. The Annual Fee is not a renewal fee. The Fee and Report are for LAST YEAR'S mining and reclamation season, and MUST be paid even if your operation was inactive.

If you have requested reclamation responsibility release from the Division of Reclamation, Mining and Safety ("Division") but your permit is not released by the anniversary date listed below, the Annual Fee MUST be paid. If the permit is released before the anniversary date, then by Statute, it is not necessary to pay an Annual Fee or submit an Annual Report for that year.

Division records indicate the following is due:

#### Select Permit Number \*

Only Permit Numbers with currently due Annual Fees will be listed. If the Permit Number is not listed, then the Annual Fees are not due, the Permit Number has already been submitted, or the Permit Number Annual Fee payment has been processed.

M1994117

#### Select Anniversary Date \*

07-26-2018

**PLEASE REMEMBER TO CLICK "SUBMIT" AFTER YOU HAVE COMPLETED YOUR REPORT AND PAYMENT.**

**Please check the box indicating you have read and understand the terms of the Annual Report and Annual Fee \***

☒ I understand and agree to the terms

### General Information

#### Permittee Name

Colorado Milling Company, LLC

#### Operation Name

Gold Hill Mill

Permit Number	Fee Due	Permit Acreage
M1994117	259.00	8.40

County	Anniversary Date	Current Bond Amount
Boulder	07-26-2018	56200.00

### Permittee Contact Information

#### Permitting Contact Name

Mike Bynum

**Company**

Colorado Milling Company, LLC

**Address 1**

50 West 100 South Street

**Address 2****City**

Moab

**State**

UT

**Zip Code**

803420000

**Phone #**

3035881119

**Fax #****Permitting Contact Email Address**

mike@burez.com

**Is the Permitting Contact information listed above correct? If it is not correct your organization's Administrator will receive an email notification. \***

☒ Yes ☐ No

**Annual Report Questions**

Information contained in this report is required and will be reviewed by the Division upon receipt and prior to the next compliance inspection of the site. If, while completing this report, you learn that your site is not in compliance with the rules and the act, it is advisable that the issues be rectified promptly to avoid possible enforcement action.

**1. Is the site identification sign posted in accordance with Rule 3.1.12(1). \***

☒ Yes ☐ No

**2. Is the affected area boundary clearly marked in accordance with Rule 3.1.12(2). \***

☒ Yes ☐ No

**3. Is the mine site in final reclamation (all material extraction and stockpile removal is complete)? \***

If "YES," please note time limits related to completion of reclamation, Rule 3.1.3.

☐ Yes ☒ No

**4. Has excavation, processing or hauling activity commenced at the site? \***

☐ Yes ☒ No

**5. Does the mine operate more than 180 days per year? \***

If "NO", please review Rule 1.13 to assure that your mine is in compliance.

☐ Yes ☒ No

**6. Has this mine been granted approval of TEMPORARY CESSATION Status? \***

☒ Yes ☐ No

**7. Has this mine been granted approval for INTERMITTENT OPERATION? \***

☐ Yes ☒ No

**For the following questions, please note that numeric values must include one decimal place, such as "0.0" for zero acres, or 10.2 instead of 10.23.**



**8. Number of acres currently affected (mining + incomplete and or unreleased reclamation). \* (?)**

8.4

**9. Number of acres that were newly affected during the current report year \* (?)**

0.0

**10. Number of acres that were reclaimed during the current report year. \* (?)**

0.0

**11. Estimated new acreage to be affected in the next report year. \* (?)**

0.0

**12. Estimated acres to be reclaimed in the next report year. \* (?)**

0.0

**13. Total acres** in various stages of reclamation, since permitted mining activities began:

**Total acres backfilled \* (?)**

0.0

**Total acres graded \* (?)**

0.0

**Total acres seeded with approved mix \* (?)**

0.0

**Seed Application Method \***

NA

**Total acres fertilized with aproved fertilizer \* (?)**

0.0

**Fertilizer Application Method \***

NA

**Total acres with topsoil replaced \* (?)**

0.0

**Topsoil replacement depth (in.) \* (?)**

0.0

**Total acres mulched with approved mulch \* (?)**

0.0

**Mulch application rate (tons/ac) \* (?)**

0.0

**Mulch Application Method \***

NA

**14. Is weed control being conducted in accordance with an approved Weed Control Plan? \***

If "YES", indicate the weed species, control area, control type, application rate and treatment date on the report map.

☒ Yes ☐ No ☐ N/A

**15. Is adequate topsoil reserved for reclamation, based on your approved permit? \***

If "NO", please explain

☒ Yes ☐ No ☐ N/A

**16. Is the reserved topsoil vegetated/stabilized in accordance with Rule 3.1.9(1)? \***

If "NO", please explain

☒ Yes ☐ No ☐ N/A

**17. If mining has exposed groundwater, is the site in compliance with the approved mining plan and Office of the State Engineer (Well Permit, S.W.S.P., and/or Permanent Augmentation Plan)? \***

☐ Yes ☐ No ☒ N/A

**18. Are all hazardous materials stored within approved spill containment structures? \***

☒ Yes ☐ No ☐ N/A

**19. Is your financial warranty value sufficient to cover the cost to complete reclamation? \***

☒ Yes ☐ No ☐ N/A

**20. Is your basis for legal right to enter still valid? \***

☒ Yes ☐ No

**21. Does your permit require you to submit monitoring information annually? \***

☐ Yes ☐ No ☒ N/A

**22. As required by Colorado Mined Land Reclamation Act and/or Colorado Land Reclamation Act for the Extraction of Construction Materials (C.R.S.34-32-116 or 34-32.5-116), attach a map to this report that accurately depicts the permit boundary, current affected area boundary and location of the acreages specified in items 8-12 and 15. \***

Only PDF formatted files can be uploaded.

Site Plan map.PDF

2.05MB

**23. If you have supplemental information you would like to provide, please upload it here.**

Only PDF formatted files can be uploaded.

**24. Rule 5.7 requires submittal of final abandonment reports within 60 days for any drill hole(s) with artesian flows and no later than 12 months for all other completed drill holes. If drill holes are a component of your exploration/prospecting activities, have they been properly abandoned?**

☐ Yes ☐ No ☒ NA

## Annual Fee Payment

**Payment Confirmation Number \*** (?)

150865100316

## Signature

**Submittal Date**

08-14-2018

**I, the undersigned, hereby state that the information provided in this report is true and accurate, and that site operations are being conducted in accordance with the Division approved mining and reclamation plans. \***

☒ I Agree

If you do not see the "Submit" button after completing your report, try to un-check and then re-check the "I Agree" box.