



FIELD WEEKLY PROGRESS REPORT

PROJECT: VALLEY LEACH FACILITY (VLF2) PHASE 2 CQA
SITE: CRIPPLE CREEK & VICTOR GOLD MINE (COLORADO)
CONTRACTOR: TEZAK HEAVY EQUIPMENT
WEEK ENDING: SATURDAY, MAY 30, 2020

REPORTING PERIOD: 05.24.2020 THROUGH 05.30.2020

Days	Sun	Mon	Tues	Wed	Thurs	Fri	Sat
Work Shifts			D	D	D	D	D
D – DAYSHIFT		N – NIGHTSHIFT			W – WEATHER		

AMBIENT TEMPERATURE RANGES:

HIGHS: 48°F TO 72°F

LOWS: 26°F TO 42°F

WEATHER CONDITIONS:

CLOUD COVER: PARTLY CLOUDY

PRECIPITATION: RAIN ON 5/27-5/30

WIND: WIND GUSTS FROM 14 TO 27 MPH

NEWFIELDS PERSONNEL ONSITE:

Personnel	Sun	Mon	Tues	Wed	Thurs	Fri	Sat
	May 24	May 25	May 26	May 27	May 28	May 29	May 30
Julie Pfeiffer			PR	PR	PR	PR	
Tyler Wendlandt			LS	LS	LS	LS	
Taylor Thompson			LT	LT	LT	GT	GT
Benjamin Melly			LG	LG	LG	LG	LG
Dylan Clark			LT	LT	LT	LT	
William Owens			ST	ST	ST	ST	GT
Jacob Sweezy			ST	ST	LT	ST	
Ryan Hunt			ST	ST	ST	LT	GT
Stephen Agenbroad			ST	ST	ST	ST	
PR – Project Resident; LS – Lead Soils Technician; LG – Lead Geosynthetics; ST – Soils Technician; GT - Geosynthetics Technician; LT – Laboratory Technician; PCE – Project Certifying Engineer							



1.0 EARTHWORKS

1.1 Structural Fill

No activity during this reporting period.

1.2 Subgrade

One area of subgrade was accepted during this reporting period. Figure 1 shows the current area of subgrade acceptance.

1.3 Soil Liner Fill

Soil Liner Fill (SLF) placement continued in the southwest portion of Phase 2B between the 10,050' and 10,150' benches. There was also placement on a small area below the 10,050' bench. SLF material was hauled from the Dump 1 stockpile using articulating haul trucks. The material was then spread with low ground pressure CAT dozers equipped with GPS. Moisture conditioning of SLF material was performed in place using a water truck, and compaction was done using a vibratory smooth drum compactor. Figure 2 shows the area of SLF placement during this reporting period.

Processing of SLF material continued at the Dump 1 processing plant.

1.4 Drain Cover Fill

No activity during this reporting period.

2.0 GEOSYNTHETICS

2.1 Geomembrane Exposure

No activity during this reporting period.

2.2 Geomembrane Installation

Geomembrane installation began within the Phase 2A-5 limits as shown on Figure 3. Approximately **40,175** square feet (P-3193 to P-3199) of 80-mil LLDPE (double sided textured) was deployed. Subgrade was inspected and approved by NewFields, Tezak, Newmont and AEG representatives prior to geomembrane deployment. Approximately **1,819** linear feet of seam was fusion welded using two fusion welding machine/operator combinations. **Three** destructive testing samples were marked during fusion seaming. Approximately **136** linear feet of seam was extrusion welded using one extrusion welding machine/operator combination. **One** destructive testing sample was marked during extrusion seaming. Non-destructive testing was performed for



fusion welded seams. Repairs were performed using the extrusion welding method for all marked defects.

2.3 Anchor Trench

Approximately **1,590** feet of interm anchor trench was excavated along the 9,950' and 10,050' benches. All anchor trench excavation was performed in accordance with design drawings and project technical specifications.

2.4 Geomembrane Deliveries

No activity during this reporting period. All geomembrane rolls were delivered prior to the start of Phase 2B construction.

2.5 Geomembrane Acceptance

No activity during this reporting period.

3.0 STORM WATER MANAGEMENT

Best Management Practices continue to be performed.

4.0 NEWFIELDS LABORATORY ACTIVITIES

NewFields personnel performed sieve analysis, atterberg limits, and compaction testing.

5.0 MEETINGS AND COMMUNICATIONS

NewFields personnel listened to the morning safety line out for mine operations on the radio, attended Tezak's daily 2pm progress meeting, and participated in the VLF2 weekly construction meeting (May 26, 2020).

6.0 MISCELLANEOUS, ISSUES, AND CONCERNS

No activity during this reporting period.



7.0 PHOTOGRAPHS



May 26, 2020 – SLF placement, compaction and anchor trench excavation (BM)



May 26, 2020 – Cleaning off the Phase 1 liner tie-in (BM)



May 27, 2020 –SLF placement along the edge of Phase 2B (BM)



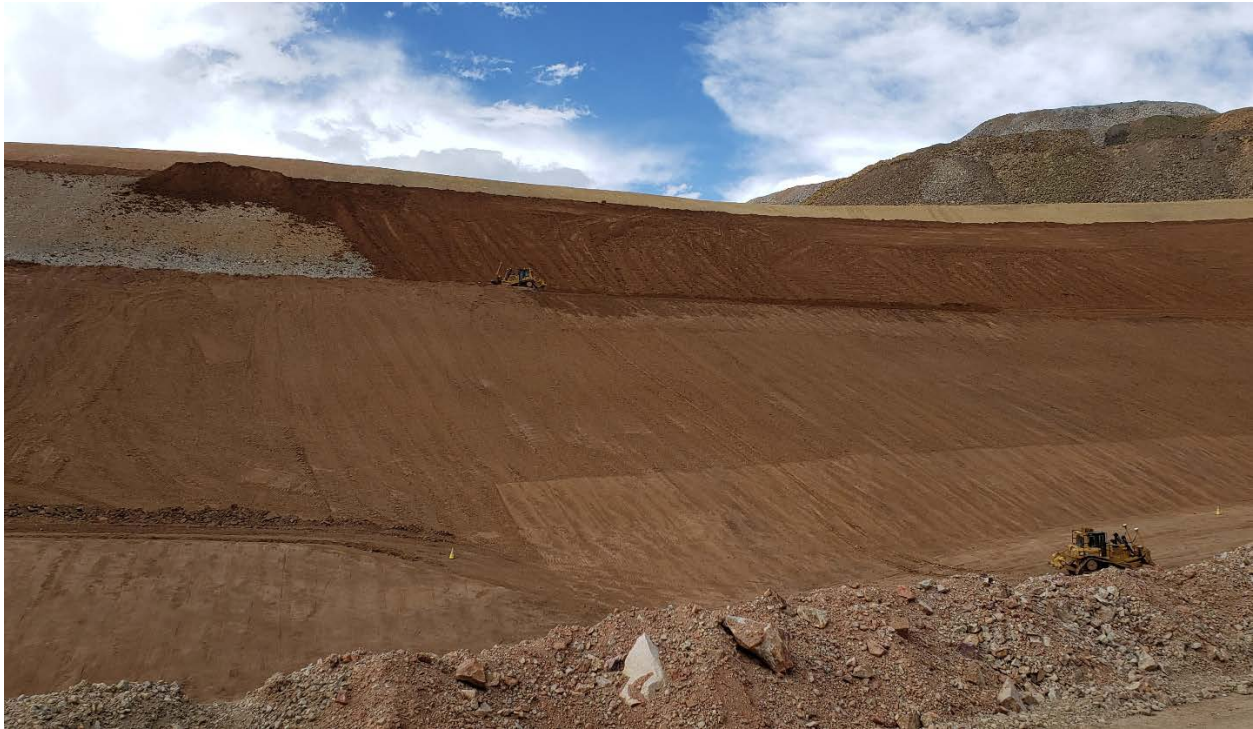
May 27, 2020 – Anchor trench excavation on the 9,950' bench (BM)



May 28, 2020 – SLF compaction in Phase 2A-5 (BM)



May 29, 2020 – Extrusion welding along the Phase 2A tie-in (BM)



May 29, 2020 – SLF placement progress (BM)



May 30, 2020 – Geomembrane deployment (BM)



Prepared By (NewFields): Julie Pfeiffer Date: 5/30/2020
Reviewed By (Newmont): John Ral Date: 6/2/2020

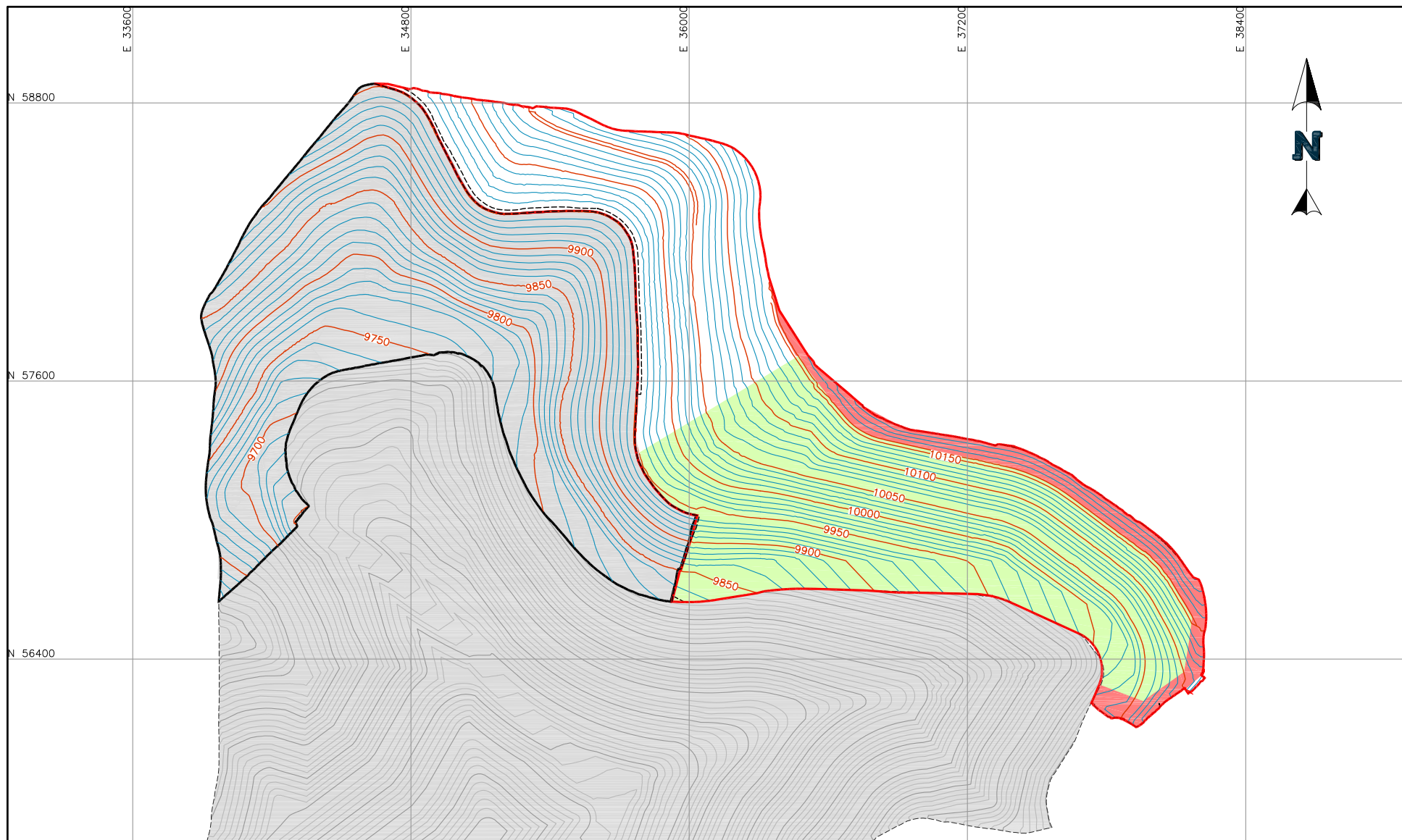
Attachments:

Figure 1 – Subgrade Acceptance







Figure 2 – SLF Placement

Figure 3 – Geomembrane Placement & Acceptance

P:\Projects\0106.032 VLF2 Phase 2 COA\A-CAD\FIGS\1.Weekly - Subgrade Acceptance\SA WE200530.dwg-5/29/2020 10:29 AM



LEGEND:

- | | | | |
|--|--------------------------|---|-----------------------------------|
|  | SUBGRADE GROUND CONTOURS |  | NEW SUBGRADE ACCEPTANCE AREA |
|  | PHASE 2A LIMITS |  | PREVIOUS SUBGRADE ACCEPTANCE AREA |
|  | PHASE 2B LIMITS |  | PREVIOUSLY COMPLETED PHASES |



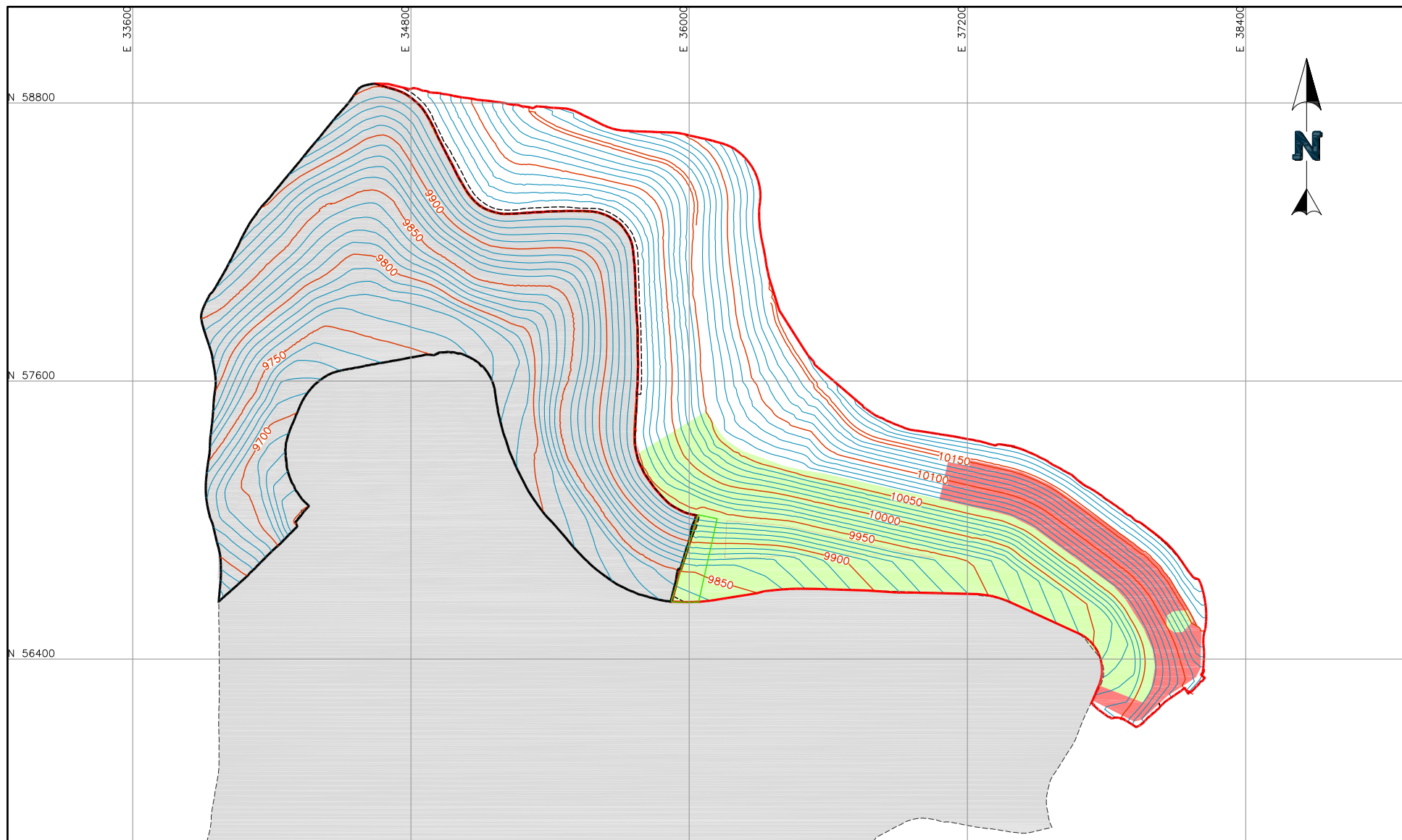
CLIENT **CRIPPLE CREEK & VICTOR
GOLD MINING COMPANY**

PROJECT **VLF2 PHASE 2 CQA**

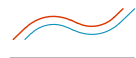
TITLE **WEEKLY SUBGRADE ACCEPTANCE
WEEK ENDING 05-30-20**

FILENAME SA WE200530	
FIGURE NO. 1	REVISION 1

P:\Projects\0106.032 VLF2 Phase 2 COA\A-CAD\FIGS\2.Weekly - SLF\SLF WE200530.dwg-5/29/2020 10:34 AM



LEGEND:



SUBGRADE GROUND CONTOURS



PHASE 2A LIMITS



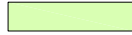
PHASE 2B LIMITS



APPROVED SLF



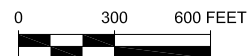
SLF PLACEMENT



PREVIOUS SLF PLACEMENT



PREVIOUSLY COMPLETED PHASES



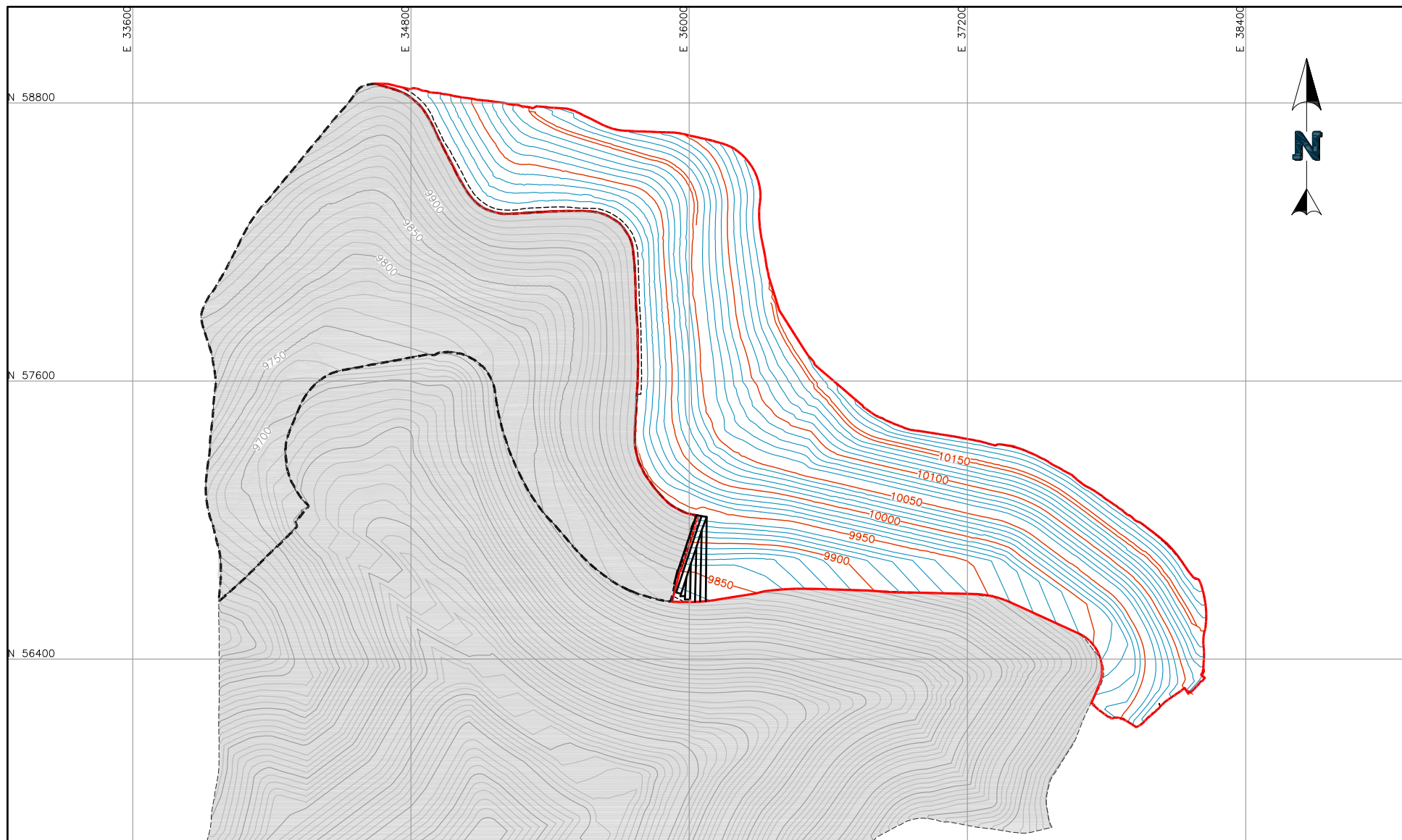
CLIENT **CRIPPLE CREEK & VICTOR
GOLD MINING COMPANY**

PROJECT **VLF2 PHASE 2 CQA**





TITLE **WEEKLY SLF PLACEMENT
WEEK ENDING 05-30-20**


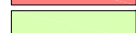

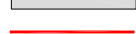
FILENAME
SLF WE200530
FIGURE NO. **2** REVISION
1

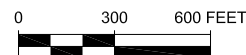
P:\Projects\0106.032 VLF2 Phase 2 COA\A-CAD\FIGS\3.Weekly - Geomembrane\Liner WE200530.dwg - 6/1/2020 4:18 PM



LEGEND:

-  SUBGRADE GROUND CONTOURS
-  NEW GEOMEMBRANE PLACEMENT
-  PREVIOUS PHASE 2 GEOMEMBRANE PLACEMENT (UNCERTIFIED AREA)
-  PHASE 2A LIMITS

-  GEOMEMBRANE ACCEPTANCE
-  PREVIOUS GEOMEMBRANE ACCEPTANCE
-  PREVIOUSLY COMPLETED PHASES
-  PHASE 2B LIMITS



CLIENT **CRIPPLE CREEK & VICTOR
GOLD MINING COMPANY**

PROJECT **VLF2 PHASE 2 CQA**

TITLE **WEEKLY GEOMEMBRANE
PLACEMENT & ACCEPTANCE
WEEK ENDING 05-30-20**

FILENAME
Liner WE200530
FIGURE NO. **3** REVISION
1