



## FIELD WEEKLY PROGRESS REPORT

**PROJECT:** VALLEY LEACH FACILITY (VLF2) PHASE 2 CQA  
**SITE:** CRIPPLE CREEK & VICTOR GOLD MINE (COLORADO)  
**CONTRACTOR:** TEZAK HEAVY EQUIPMENT  
**WEEK ENDING:** SATURDAY, JUNE 13, 2020

**REPORTING PERIOD: 06.07.2020 THROUGH 06.13.2020**

Days	Sun	Mon	Tues	Wed	Thurs	Fri	Sat
Work Shifts			D	D	D	D	D
D – DAYSHIFT		N – NIGHTSHIFT			W – WEATHER		

### AMBIENT TEMPERATURE RANGES:

*HIGHS:* 48°F TO 73°F

*LOWS:* 27°F TO 46°F

### WEATHER CONDITIONS:

*CLOUD COVER:* PARTLY CLOUDY

*PRECIPITATION:* SNOW ON 6/9, RAIN ON 6/13

*WIND:* WIND GUSTS FROM 20 TO 43 MPH

### NEWFIELDS PERSONNEL ONSITE:

Personnel	Sun	Mon	Tues	Wed	Thurs	Fri	Sat
	June 7	June 8	June 9	June 10	June 11	June 12	June 13
Julie Pfeiffer		PR	PR	PR	PR	PR	
Tyler Wendlandt		LS	LS	LS	LS	LS	
Taylor Thompson		GT	GT	GT	GT	GT	GT
Benjamin Melly		LG	LG	LG	LG	LG	LG
Dylan Clark		LT		LT	LT	LT	ST
William Owens		ST		ST	GT	GT	GT
Jacob Sweezy		ST		ST	ST	ST	ST
Ryan Hunt		ST		ST	LT	GT	
Stephen Agenbroad		ST		ST	GT	GT	
Randolph McLean		GT	GT	GT	GT		
PR – Project Resident; LS – Lead Soils Technician; LG – Lead Geosynthetics; ST – Soils Technician; GT – Geosynthetics Technician; LT – Laboratory Technician; PCE – Project Certifying Engineer							



## **1.0 EARTHWORKS**

### **1.1 Structural Fill**

No activity during this reporting period.

### **1.2 Subgrade**

One additional area of subgrade was accepted during this reporting period. All subgrade has been approved for 2020 construction. Figure 1 shows the current area of subgrade acceptance.

### **1.3 Soil Liner Fill**

Soil Liner Fill (SLF) placement continued in the southwest portion of Phase 2B between the 10,150' and 10,195' benches as well as in the northern portion of Phase 2B between the 9,950' and 10,050' benches. SLF material was hauled from the Dump 1 stockpile using articulating haul trucks. The material was then spread with low ground pressure CAT dozers equipped with GPS. Moisture conditioning of SLF material was performed in place using a water truck, and compaction was done using a vibratory smooth drum compactor. Figure 2 shows the area of SLF placement during this reporting period.

Processing of SLF material continued at the Dump 1 processing plant.

### **1.4 Drain Cover Fill**

Drain Cover Fill (DCF) placement was performed in the areas shown on Figure 4. Some DCF was spread from the stockpiles in previously constructed Phase 2A and some was hauled from the mine's approved crushed ore stockpiles. The DCF was placed in a 2-foot lift on previously approved geomembrane by low ground pressure CAT dozers. Haul routes consisted of 4-foot lifts that will be spread into 2-foot lifts at a later date. Tezak laborers were present during placement to assist in removing debris/sandbags/large rocks, installing high volume solution collection piping, and ensuring that the lift thickness was correct. A NewFields' representative constantly monitored the DCF placement.

## **2.0 GEOSYNTHETICS**

### **2.1 Geomembrane Exposure**

No activity during this reporting period.



## 2.2 Geomembrane Installation

Geomembrane installation continued within the Phase 2A-5 limits as shown on Figure 3. Approximately **92,022** square feet (P-3232 to P-3260) of 80-mil LLDPE (double sided textured) was deployed. Subgrade was inspected and approved by NewFields, Tezak, Newmont and AEG representatives prior to geomembrane deployment. Approximately **4,472** linear feet of seam was fusion welded using two fusion welding machine/operator combinations. **Eleven** destructive testing samples were marked during fusion seaming. Approximately **977** linear feet of seam was extrusion welded using two extrusion welding machine/operator combinations. **Ten** destructive testing samples were marked during extrusion seaming. Non-destructive testing was performed for fusion welded seams. Repairs were performed using the extrusion welding method for some marked defects.

## 2.3 Anchor Trench

No activity during this reporting period.

## 2.4 Geomembrane Deliveries

No activity during this reporting period. All geomembrane rolls were delivered prior to the start of 2020 construction.

## 2.5 Geomembrane Acceptance

Panels P-3193 through P-3216 were accepted for drain cover fill placement. The attached Figure 3 shows the acceptance areas.

## 3.0 STORM WATER MANAGEMENT

Best Management Practices continue to be performed.

## 4.0 NEWFIELDS LABORATORY ACTIVITIES

NewFields personnel performed sieve analysis, atterberg limits, and compaction testing. The following samples were collected for laboratory testing:

- Drain Cover Fill (Crushed Ore): DCFO-1-C, DCFO-2-C
- Drain Cover Fill: DCF-1-R



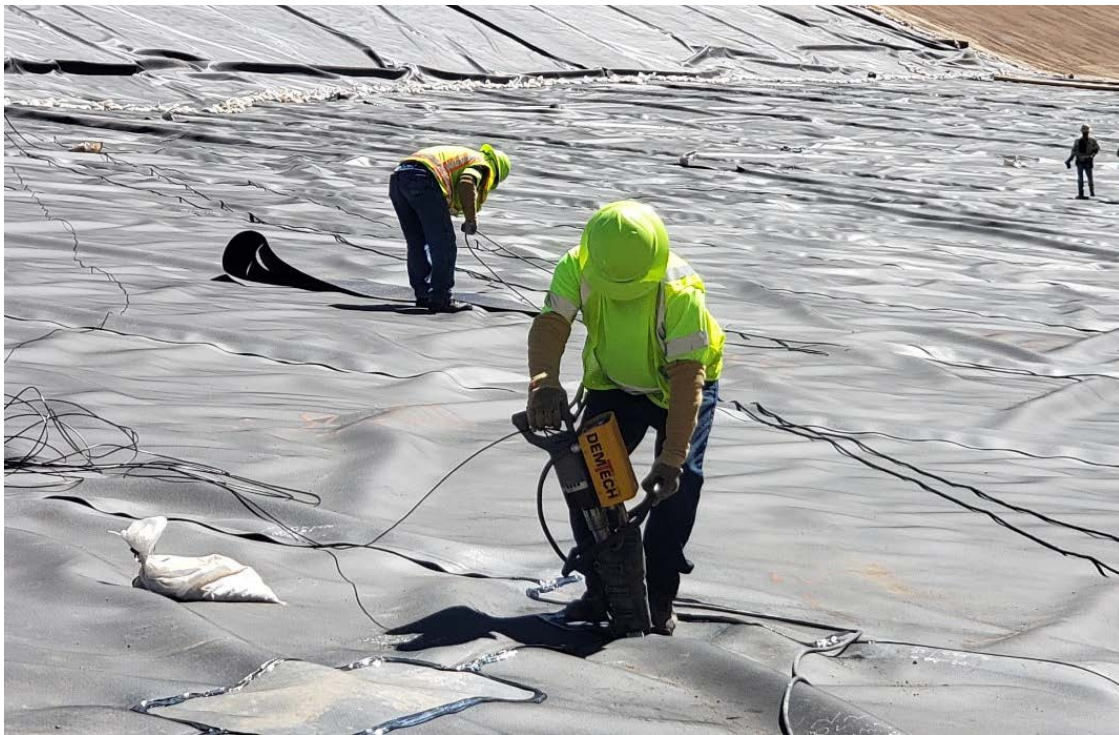
## 5.0 MEETINGS AND COMMUNICATIONS

NewFields personnel listened to the morning safety line out for mine operations on the radio, attended Tezak's daily 2pm progress meeting, and participated in the VLF2 weekly construction meeting (June 10, 2020).

## 6.0 MISCELLANEOUS, ISSUES, AND CONCERNS

No activity during this reporting period.

## 7.0 PHOTOGRAPHS



**June 8, 2020 – Extrusion welding a repair (BM)**



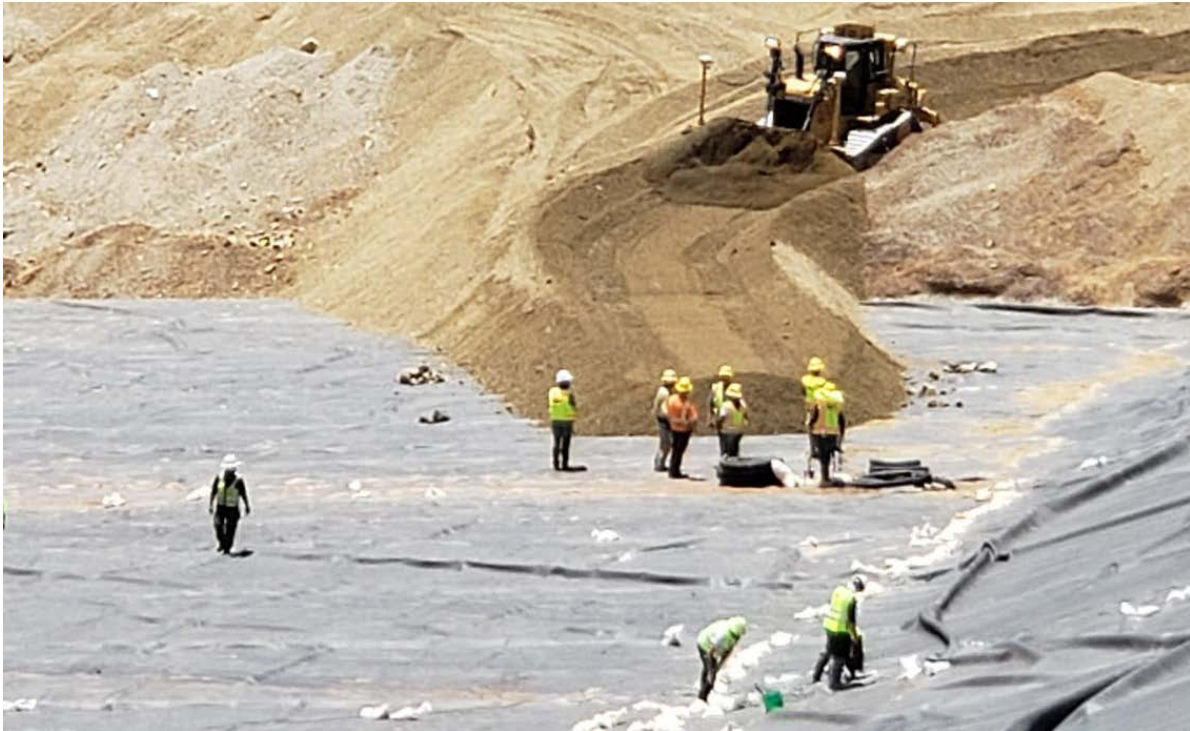


**June 10, 2020 – SLF compaction below the 9,950' bench (JP)**



**June 11, 2020 –Geomembrane deployment (BM)**





**June 11, 2020 – Spreading drain cover fill (BM)**



**June 11, 2020 – HVSC piping laid out on geomembrane (JP)**



June 13, 2020 – Vacuum testing extrusion welds (BM)

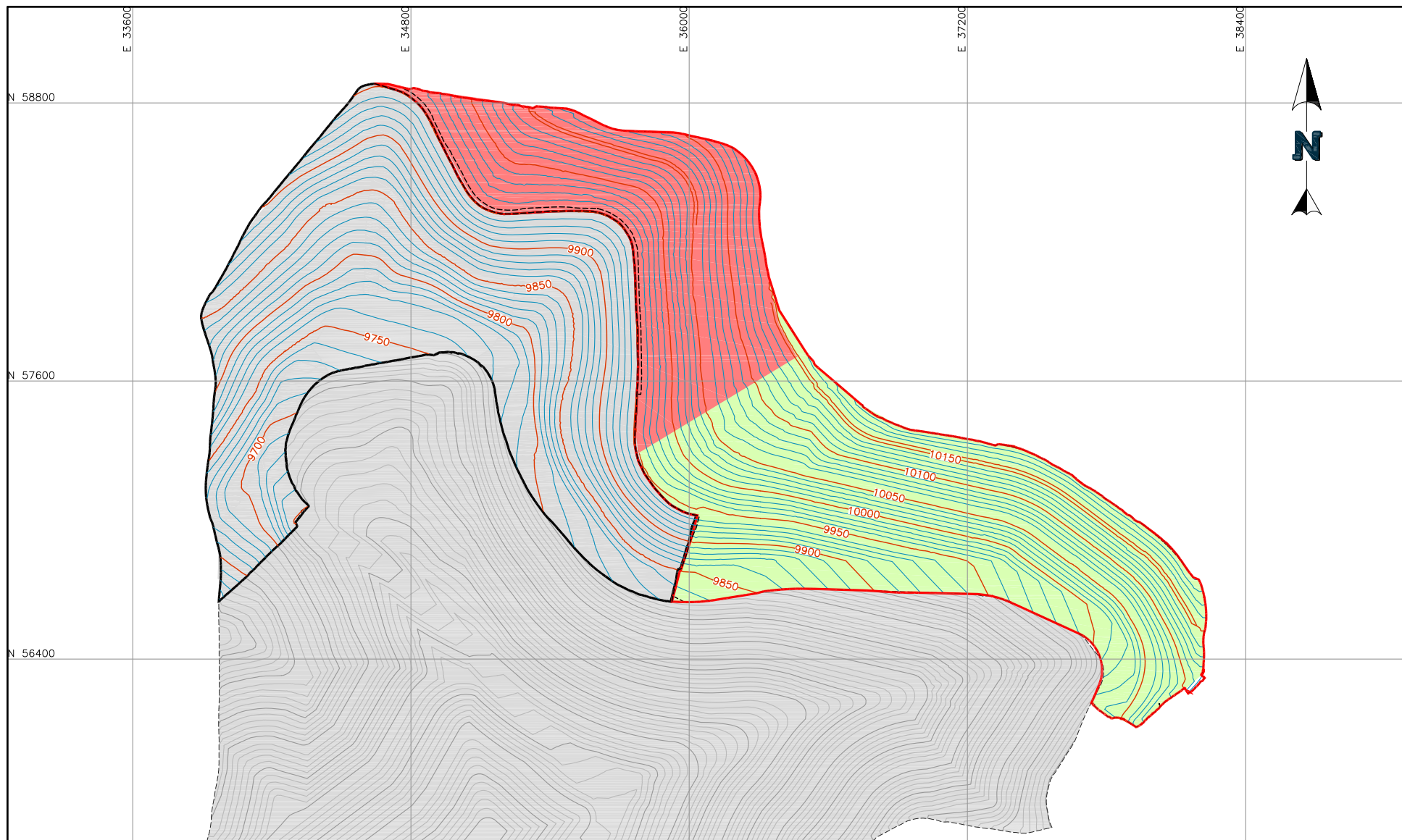
Prepared By (NewFields): Julie Pfeiffer Date: 6/13/2020  
Reviewed By (Newmont): John Paul Date: 08/03/2020

**Attachments:**




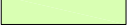


- Figure 1 – Subgrade Acceptance
- Figure 2 – SLF Placement
- Figure 3 – Geomembrane Placement & Acceptance
- Figure 4 – Drain Cover Fill Placement



P:\Projects\0106.032 VLF2 Phase 2 COA\A-CAD\FIGS\1.Weekly - Subgrade Acceptance\SA WE200613.dwg-6/11/2020 12:41 PM



**LEGEND:**

- |  |                          |   |                                   |
|--|--------------------------|---|-----------------------------------|
|  | SUBGRADE GROUND CONTOURS |  | NEW SUBGRADE ACCEPTANCE AREA      |
|  | PHASE 2A LIMITS          |  | PREVIOUS SUBGRADE ACCEPTANCE AREA |
|  | PHASE 2B LIMITS          |  | PREVIOUSLY COMPLETED PHASES       |



CLIENT **CRIPPLE CREEK & VICTOR  
GOLD MINING COMPANY**

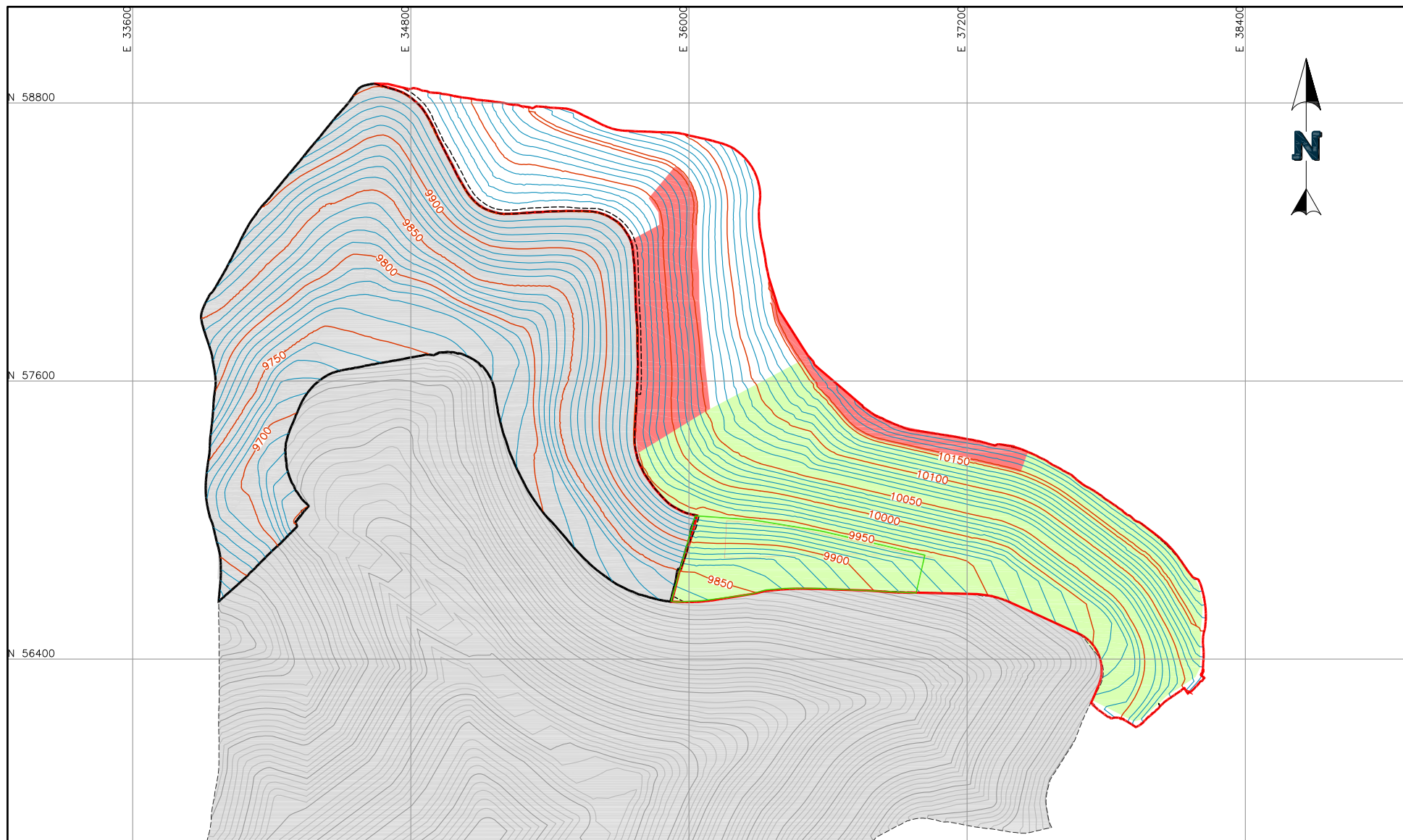
PROJECT **VLF2 PHASE 2 CQA**

TITLE **WEEKLY SUBGRADE ACCEPTANCE  
WEEK ENDING 06-13-20**

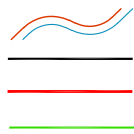
FILENAME SA WE200613	
FIGURE NO. <b>1</b>	REVISION <b>1</b>



P:\Projects\0106.032 VLF2 Phase 2 COA\A-CAD\FIGS\2.Weekly - SLF\SLF WE200613.dwg - 6/15/2020 1:15 PM



**LEGEND:**

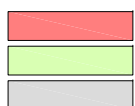


SUBGRADE GROUND CONTOURS

PHASE 2A LIMITS

PHASE 2B LIMITS

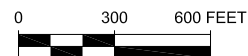
APPROVED SLF



SLF PLACEMENT

PREVIOUS SLF PLACEMENT

PREVIOUSLY COMPLETED PHASES

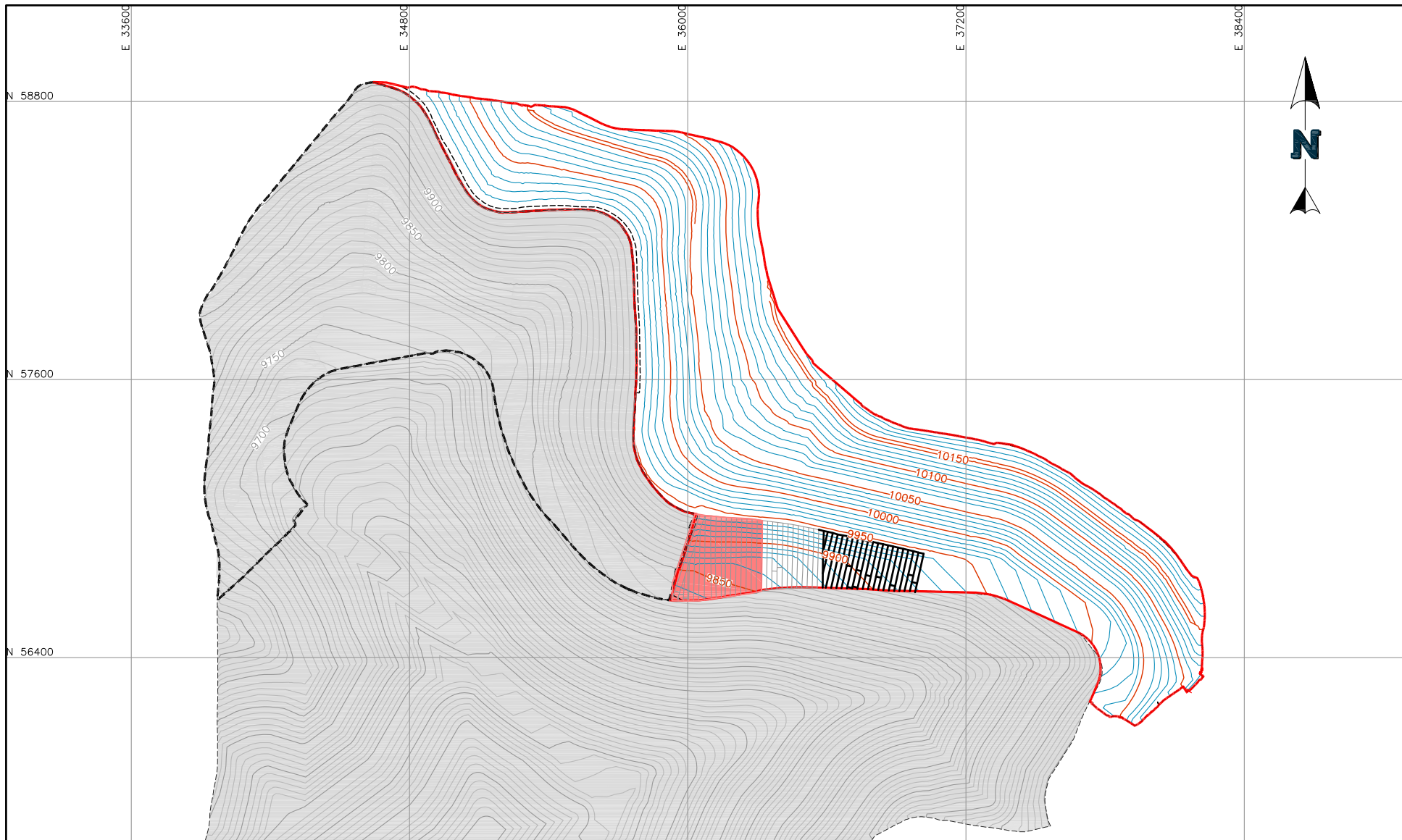


CLIENT **CRIPPLE CREEK & VICTOR  
GOLD MINING COMPANY**





PROJECT **VLF2 PHASE 2 CQA**


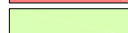
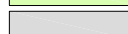
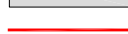
TITLE **WEEKLY SLF PLACEMENT  
WEEK ENDING 06-13-20**

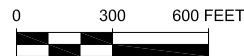
FILENAME  
SLF WE200613  
FIGURE NO. **2** REVISION  
**1**



**LEGEND:**

-  SUBGRADE GROUND CONTOURS
-  NEW GEOMEMBRANE PLACEMENT
-  PREVIOUS PHASE 2 GEOMEMBRANE PLACEMENT (UNCERTIFIED AREA)
-  PHASE 2A LIMITS

-  GEOMEMBRANE ACCEPTANCE
-  PREVIOUS GEOMEMBRANE ACCEPTANCE
-  PREVIOUSLY COMPLETED PHASES
-  PHASE 2B LIMITS



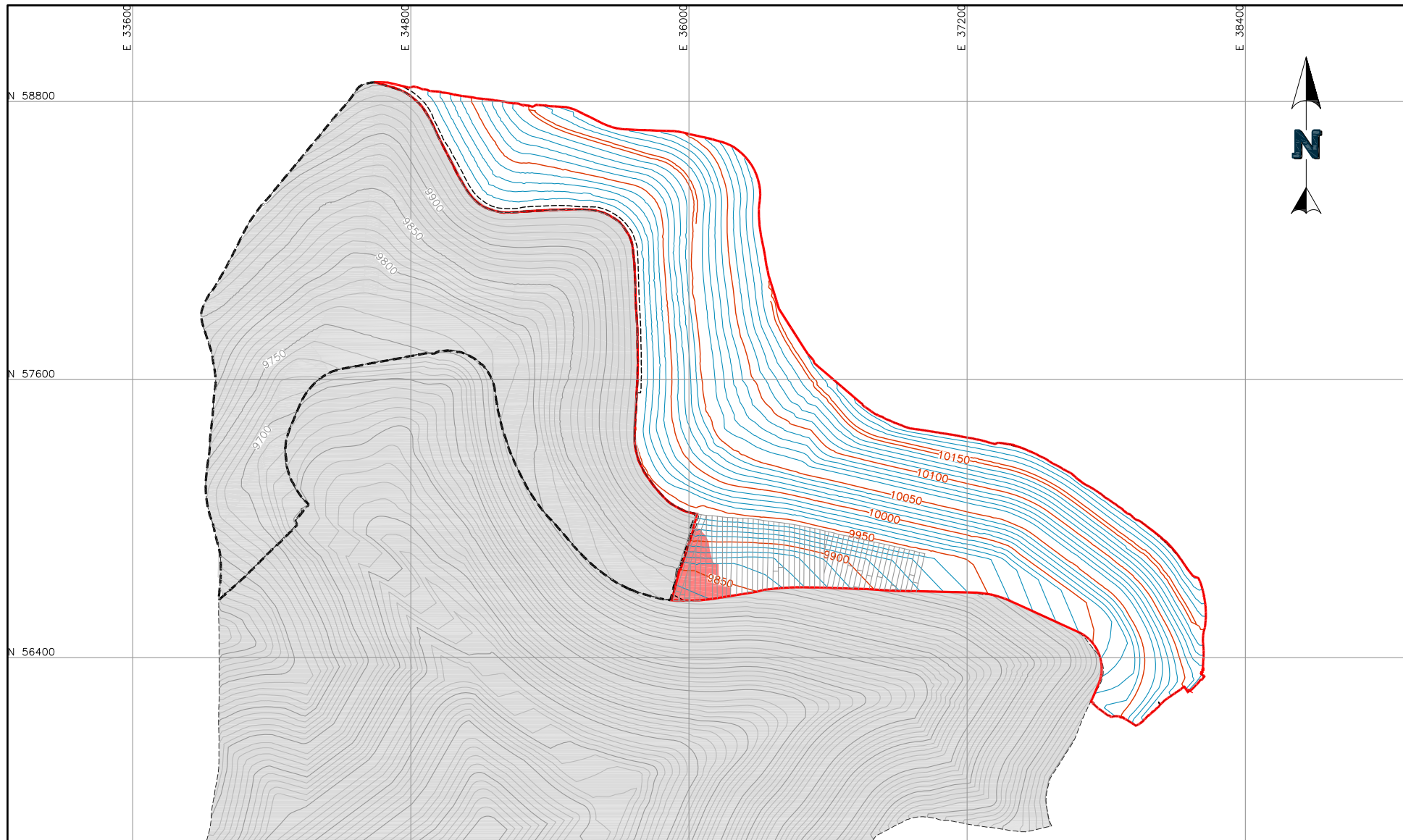
CLIENT **CRIPPLE CREEK & VICTOR GOLD MINING COMPANY**

PROJECT **VLF2 PHASE 2 CQA**




TITLE **WEEKLY GEOMEMBRANE PLACEMENT & ACCEPTANCE  
WEEK ENDING 06-13-20**




FIGURE NO.		REVISION	
3		1	

P:\Projects\0106.032 VLF2 Phase 2 COA\A-CAD\FIGS\4.Weekly - DCF\DCF WE200613.dwg-6/11/2020 1:01 PM



**LEGEND:**

-  SUBGRADE GROUND CONTOURS
-  PHASE 2A LIMITS
-  PHASE 2B LIMITS

-  DRAIN COVER FILL PLACEMENT AREA
-  PREVIOUS DRAIN COVER FILL PLACEMENT AREA
-  PREVIOUSLY COMPLETED PHASES



CLIENT **CRIPPLE CREEK & VICTOR  
GOLD MINING COMPANY**

PROJECT **VLF2 PHASE 2 CQA**

TITLE **WEEKLY DRAIN COVER FILL PLACEMENT  
WEEK ENDING 06-13-20**

FIGURE NO. **4** REVISION **1**