



L.G. EVERIST, INC.

ROCK SOLID SINCE 1876

7321 E. 88TH AVENUE, SUITE 200

HENDERSON, COLORADO 80640

PHONE 303-287-9606 • FAX 303-289-1348

August 4, 2020

Division of Reclamation, Mining and Safety
1313 Sherman Street, Room 215
Denver, CO 80203

RE: DRMS Annual Fee and Report for M-1996-052, Firestone Gravel Resource
Permittee Name: L.G. Everist, Inc.
Anniversary: August 4

Dear Division:

The DRMS Annual Report for Firestone Gravel Resource, DRMS Permit # M-1996-052, has been submitted online. The annual fee has been paid online with a credit card.

Included with this letter are the attachments for the DRMS Annual Report. They include a map which shows the various areas of mining and reclamation noted in the Annual Report. The mining map shows: active mining areas (mining), reclaimed areas (mining completed, sloping and re-vegetation done), future mining areas, processing plant, settling ponds, and boneyard. The affected area remains mostly the same since the last annual report, with some expansion to the east.

We practice concurrent reclamation - after we mine out an area, we finish by building the compacted liner slopes. We continue our weed control and management with mowing and spraying throughout the growing seasons. We will be seeding newly reclaimed areas this fall and next spring.

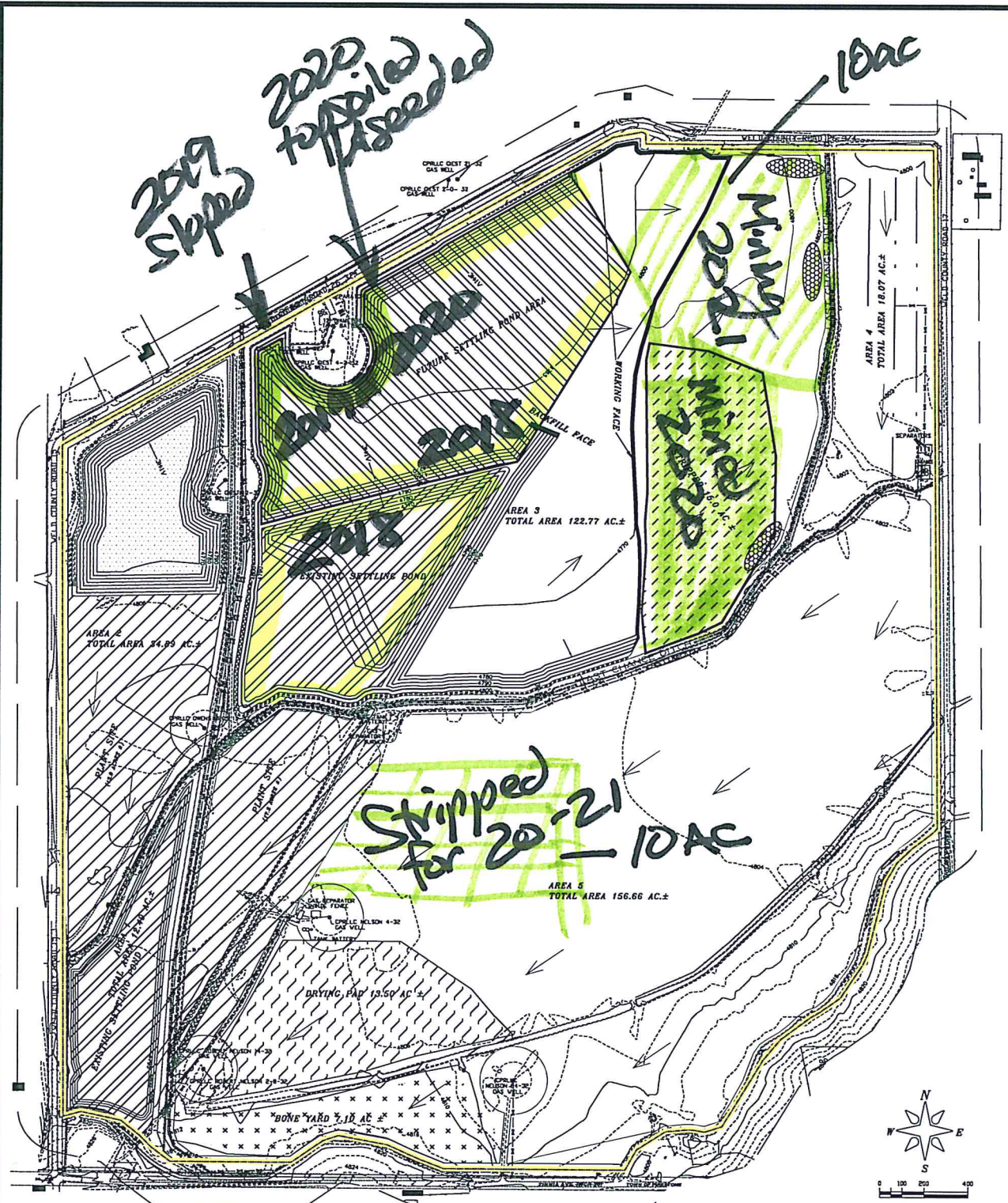
The Groundwater Monitoring Report includes annual data and a monitoring well map. We submit the last year and half of data, starting from January-2019 through June-2020. Analysis of the groundwater monitoring data showed that groundwater levels have remained in compliance. The only exterior wells that went out of their baseline ranges were MW03 and MW04. MW03 was out of range 1 month in 2019, but back into range the following month. MW04 was out of range for 2 months in 2019, but back in range the following months. These variances appear to be related to irrigation changes - since the Last Chance Ditch and a private seep ditch are located between the wells and our mining areas. The variances have not adversely affected any neighbors. Therefore, there are no compliance issues.

If you have questions, feel free to contact me at 303-286-2247, or lmshults@lgeverist.com.

Sincerely,

Lynn Mayer Shults
Regulatory Manager

Attached:
Annual Report Map – mining and reclamation areas
Ground Water Monitoring Report – data and map



TRIMS
Annual Rpt
2020

FIRESTONE
M-1996-052

LEGEND

— PERMIT LINE/AFFECTED LANDS	▨ PLANT SITE
— 200 FOOT	▨ LAKE
— DITCH	▨ STRIPPED
— ROADS	▨ BONE YARD
— PAVED ROAD	▨ DRYING PAD/ GROWTH MEDIUM STORAGE
— BURIED ELECTRIC	▨ SETTLING POND
— OVERHEAD COMMUNICATIONS	▨ PROPOSED SETTLING POND
— OVERHEAD ELECTRIC	
— FENCE	
— GASLINE	
— GAS/OIL WELL	
— BUILDING	
— TEMPORARY TOPSOIL PILE	
— ESTIMATED DIRECTION OF MINING	

Parts of the SW1/4NE1, NW1/4SE1, NE1/4SW1, SE1/4SW1 SW1/4SW1, NE1/4NW1, SE1/4NW1 SW1/4NW1 and NW1/4NW1, Sec 32, T-3-N, R-67-W of the 6th P.M., County Of Weld, State of Colorado

Map Exhibit C-1 - Mining Plan Map

PREPARED BY: ENVIRONMENT, INC.
7805 VANCE, DR., # 205A
DENVER, CO 80231
303.422.7707
environment@environmentinc.net

AMENDMENT
FOR
FIRESTONE GRAVEL RESOURCE
PERMIT # M-1996-052

DATE	DESCRIPTION	BY	DRIVER
1/17/2018	ORIGINAL PERMIT FILED	—	—
6/27/2018	AMENDED IN ADD 07100 AC ±	—	—
6/27/2018	AND PLANT PLANT LINE	—	—
5/7/2019	REVISED PLANT PLANT LINE	—	—
5/7/2019	REVISIONS TO AND SETBACK POND	—	—
5/7/2019	REVISIONS TO AND SETBACK POND	—	—



L.G. Everist, Inc.
7321 EAST 88TH AVENUE | HENDERSON, COLORADO 80640
PHONE: (303) 287-4656 | FAX: (303) 289-1348

DATE	SCALE	FILE	DATE
12/27/2018	1"=200'	1996-052	12/27/2018
12/27/2018	1"=200'	1996-052	12/27/2018

L.G. Everist, Inc. - Firestone Gravel Resource (M-1996-052) - GROUNDWATER MONITORING REPORT

ELEVATION DATA													
Note: Elevations derived from the field Measurements (see worksheet 1) and the Elevation (TOC) of each MW)													
MONITOR WELL NO.	MW-01	MW-02 (gone)	MW-03	MW-04	MW-05	MW-06 (gone)	MW-07	MW-09 (gone)	MW-10	MW-11 (gone)	MW-12	MW-13	MW-14
NORTHING, FT	1,307,909.50	1,309,751.93	1,312,173.59	1,309,691.51	1,308,177.33	1,308,132.31	1,311,086.36	1,308,703.68	1,308,922.41	1,309,498.47	1,309,482.41	1,311,896.53	1,311,760.15
EASTING, FT	3,162,454.93	3,163,486.50	3,165,870.74	3,165,916.29	3,165,934.69	3,162,338.25	3,162,480.59	3,162,729.80	3,163,085.25	3,163,226.77	3,163,363.55	3,164,613.07	3,164,646.53
ELEVATION (TOG), FT	4,810.13	4,806.39	4,799.87	4,802.43	4,836.24			4,805.05	4,804.48	4,805.02	4,804.59	4,797.56	4,797.23
CASING HEIGHT, FT	3.32	3.28	3.03	2.36	3.02			2.67	2.58	2.75	3.08	3.00	3.00
ELEVATION (TOC), FT	4,812.71	4,809.31	4,802.62	4,805.13	4,839.21	4,812.56	4,806.93	4,807.72	4,807.06	4,807.77	4,807.67	4,800.56	4,800.23
	exterior	interior	exterior	exterior	exterior	interior	exterior	interior	interior	interior	interior	exterior	interior

Groundwater Monitoring Calculations - 2019 and 2020 - to Determine Compliance with Baseline Monitoring

Groundwater Monitoring Plan - notes from Adequacy Response #2 (August-2010)

- Determining Compliance - From AR-2, "LGE proposes implementing corrective actions when groundwater levels at exterior monitoring holes [see #3] have dropped 5 feet or more from the monthly average drop [see #4] established during monitoring [see #2]."
- Monitoring Period - baseline monitoring period is 2006-2010, pre-LGE operations
- Exterior Monitoring Wells - are **BOLDED**, and noted in AR-2 as being: MW-01, MW-03, MW-04, MW-05, MW-07, MW-13
- Mon-to-Mon Average Change +/- (baseline) to incorporate both drops and increases (formerly called "monthly average drop")
 - Mon-to-Mon Average Changes +/- (baseline) were calculated by using the each relevant month-to-month change over each of the baseline years.
 - 5-feet - added to the Mon-to-Mon Average Changes +/- (baseline) to get the Mon-to-Mon Average Changes +/- with 5-feet added (baseline).

DRMS Annual Report - Aug-2020
data from 2019 and 2020

Determining Compliance with Groundwater Monitoring Plan

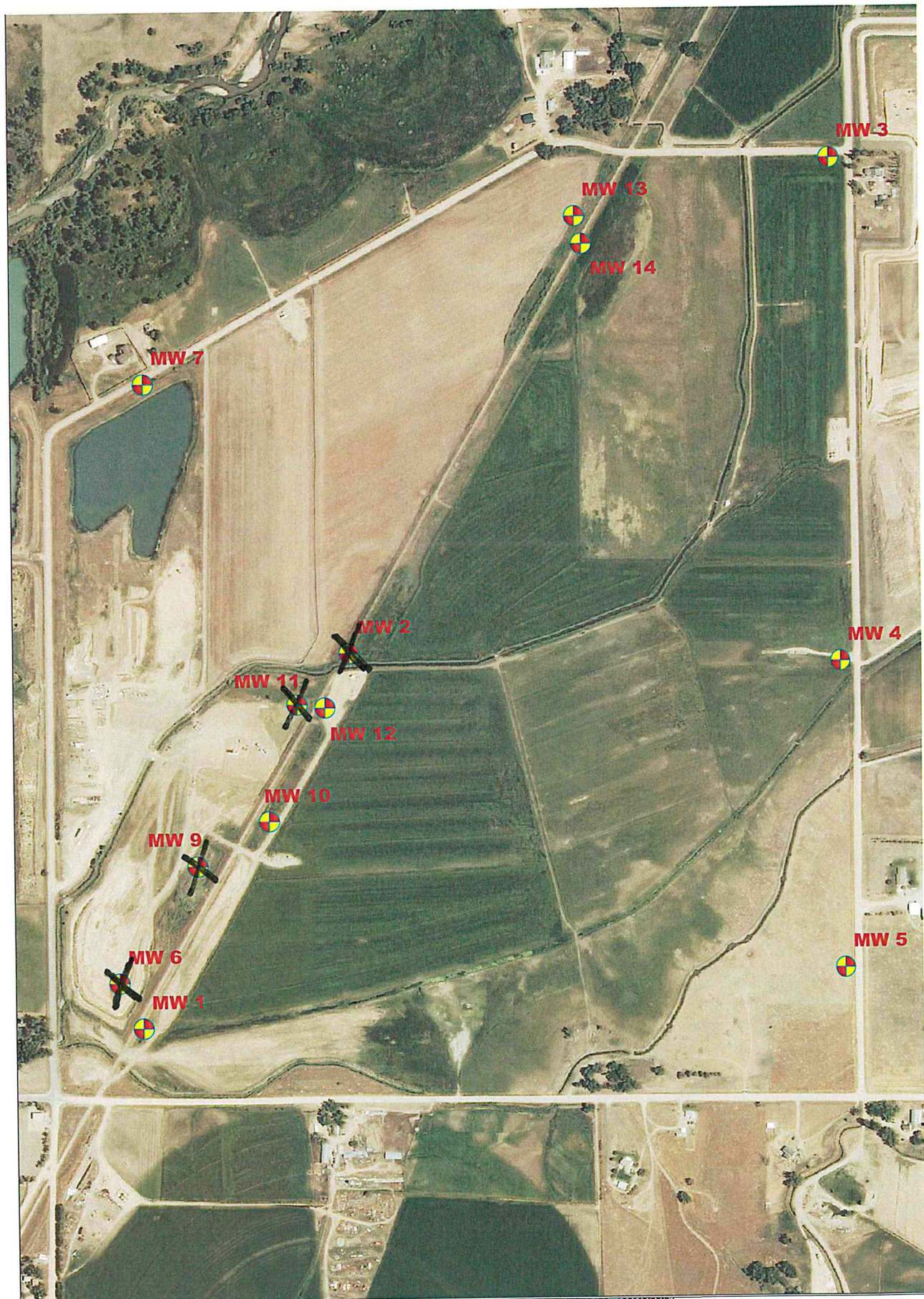
- Using current data, calculate the "Month-to-Month Change" in groundwater levels using monthly data for each well.
- Month-to-Month Changes that are (=) or (<) the "Mon-to-Mon Average Change +/- with 5-feet Added (baseline)" are in compliance. If the changes are greater, they are out of compliance and in red.




2019 - Mon-to-Mon Change													
(Month-to-Month Changes that are (=) or (<) the "Mon-to-Mon Average Change +/- with 5-feet Added (baseline)" are in compliance. If the changes are greater, they are out of compliance and shown in red / shaded.)													
January-February	0.35	gone	2.05	-4.90	0.15	gone	0.25	gone	0.50	gone	0.75	0.00	0.60
February-March	-0.15	gone	0.70	-0.40	0.50	gone	-0.95	gone	-0.55	gone	-1.95	0.00	0.55
March-April	-0.25	gone	0.50	-0.60	0.15	gone	1.25	gone	-0.85	gone	-1.20	0.00	-0.85
April-May	-0.70	gone	-3.60	0.10	-0.15	gone	-0.20	gone	-0.20	gone	-0.20	0.00	0.30
May-June	-0.20	gone	-0.65	-0.50	-0.30	gone	0.20	gone	-0.25	gone	-0.10	0.00	-0.70
June-July	-0.55	gone	-8.00	10.21	-0.95	gone	-1.60	gone	-0.10	gone	-0.08	0.16	-0.04
July-August	-1.80	gone	-4.10	-12.13	-0.83	gone	2.25	gone	-4.32	gone	-4.40	-0.21	-4.83
August-September	0.24	gone	2.92	1.55	-0.43	gone	-1.65	gone	2.92	gone	2.65	-0.05	-0.98
September-October	1.50	gone	3.93	0.62	-0.06	gone	1.03	gone	0.72	gone	0.75	0.13	1.78
October-November	0.91	gone	3.80	0.55	0.39	gone	0.54	gone	0.96	gone	1.43	-0.01	3.62
November-December	0.44	gone	2.50	0.23	0.61	gone	0.05	gone	0.42	gone	0.51	-0.02	1.48
December-January	0.31	gone	1.67	0.23	0.57	gone	-1.39	gone	0.25	gone	0.24	0.10	0.62

2020 - Mon-to-Mon Change													
(Month-to-Month Changes that are (=) or (<) the "Mon-to-Mon Average Change +/- with 5-feet Added (baseline)" are in compliance. If the changes are greater, they are out of compliance and shown in red / shaded.)													
January-February	0.25	gone	1.28	0.19	0.56	gone	-1.96	gone	0.10	gone	0.10	gone	can't access
February-March	0.03	gone	-0.15	-0.25	0.37	gone	0.23	gone	-0.45	gone	-1.78	gone	can't access
March-April	-0.20	gone	0.35	-0.85	0.23	gone	-0.85	gone	-0.10	gone	0.93	gone	can't access
April-May	-2.08	gone	-0.86	-1.24	-0.61	gone	-0.04	gone	-0.18	gone	-0.13	gone	can't access
May-June	-0.14	gone	-5.64	-0.30	-0.90	gone	0.19	gone	-0.27	gone	-0.30	gone	can't access
June-July													
July-August													
August-September													
September-October													
October-November													
November-December													
December-January													

DRMS Annual Report 2020 - Groundwater Monitoring Report & Well Map

We are submitting the last year and half of data, starting from January-2019 through June-2020. Analysis of the groundwater monitoring data showed that groundwater levels have remained in compliance. The only exterior wells that went out of their baseline ranges were MW03 and MW04. MW03 was out of range 1 month in 2019, but back into range the following month. MW04 was out of range for 2 months in 2019, but back in range the following months. These variances appear to be related to irrigation changes - since the Last Chance Ditch and a private seep ditch are located between the wells and our mining areas. The variances have not adversely affected any neighbors. Therefore, there are no compliance issues.



 = Monitoring Well			DRAWN BY: DCF		REV. #	BY	DATE	DESCRIPTION
			DATE: 7-23-2014					
			SCALE: nts					
			CAD FILE:					