

Braun

Braun Environmental, Inc.

355 S. Teller St., Suite 200, Lakewood, Colorado 80226

Office: 303-697-0950

Fax: 303-697-2140

July 30, 2020

SENT VIA EMAIL

Lance Barker
Mineral Mountain Gold, LLC
P.O. Box 247
Cripple Creek, Colorado 80813
Dear Mr. Barker,

At your request, Braun Environmental checked the permit boundary corners that you requested on you property in Cripple Creek. The corners include Corner 4 of the Elk claim (MS 9572), the next corner east along the permit boundary on the Elk - Coburn (MS 9287), and a third along the line of the Deer (MS 9572) and the Coburn claims.

The survey found Corner 4 of the Elk to be missing, and that corner was reset. Missing, also was the second above described corner. However, since that corner was located within an active travel-way, and a post at that location would have interfered with traffic; potentially causing safety issues, it was not set permanently set when the permit area was laid out. Inspection of the site found that the witness corner for that point was still intact and I remember originally setting a pin at this location that could have been located using a metal detector. The third permit boundary corner was found to be in place where it had been originally located. I have attached a copy of a portion of you permit map to show the corners that were visited.

Call me if you have any questions. Thank you for allowing Braun to do this work.

Sincerely,
BRAUN ENVIRONMENTAL, INC.



C. A. Braun, P.E.
enc.
CAB/rl

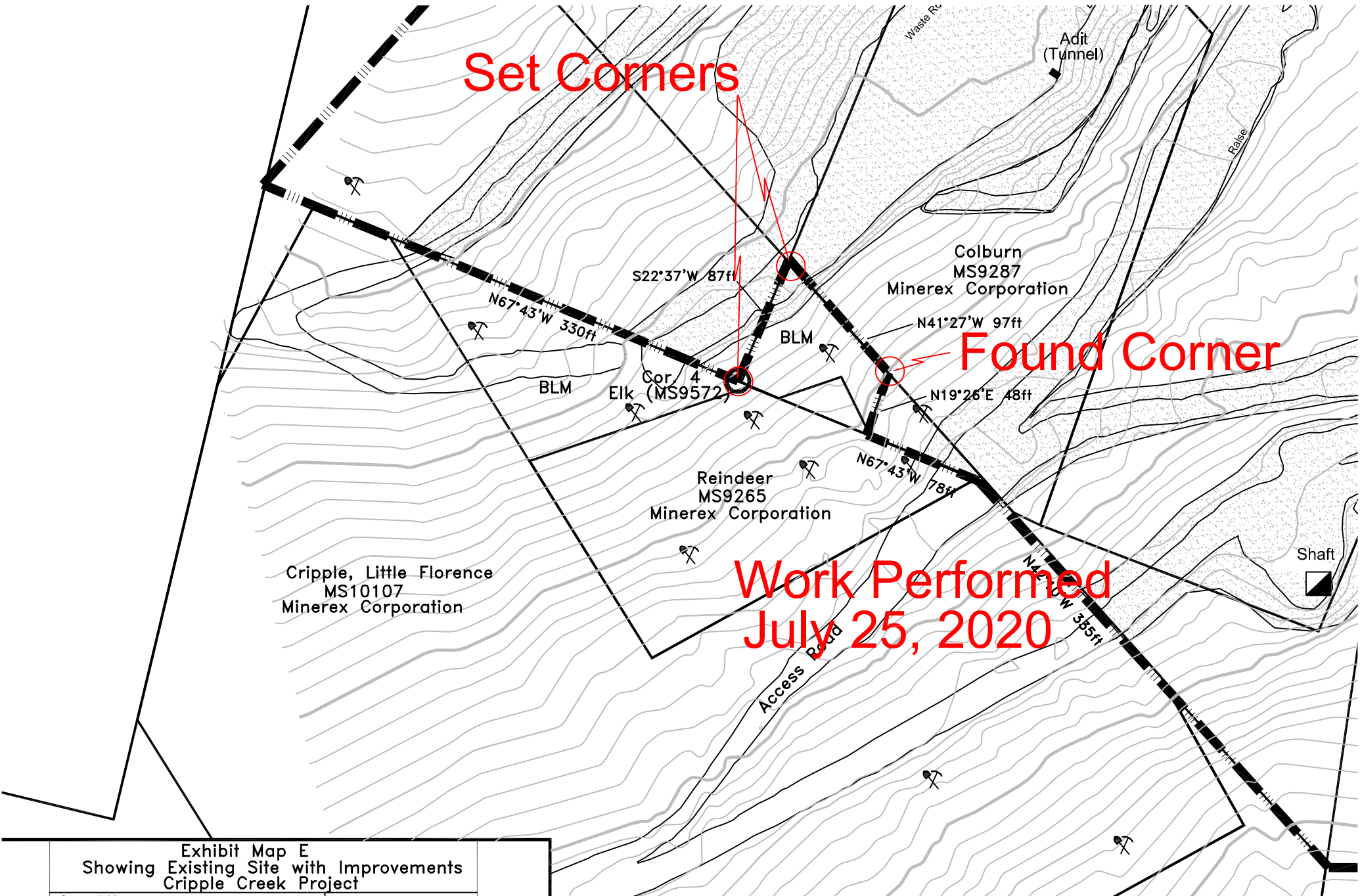


Exhibit Map E
Showing Existing Site with Improvements
Cripple Creek Project