

LEGEND

BOUNDARIES	
Incorporated city or equivalent	---
BUILDINGS AND RELATED STRUCTURES	
Building	■
Fence	—•—•—•—•—
BASELINE CONTOURS	
Index	—•—•—•—•—
Approximate of indefinite	—•—•—•—•—
Intermediate	—•—•—•—•—
Approximate of indefinite	—•—•—•—•—
Supplementary	—•—•—•—•—
CONTROL DATA AND MONUMENTS	
Boundary Monument	—•—•—•—•—
Third-order or better elevation, no tablet	BM 5287
Vertical Control	BM 5287
Third-order or better elevation, with tablet	BM 5287
LAND SURVEYS	
Mining claim or property boundary	—•—•—•—•—
Mining claim or property monument	—•—•—•—•—
BASELINE MINES AND CAVES	
Quarry and open pit mine	—•—•—•—•—
Gravel, sand, clay, or borrow pit	—•—•—•—•—
Mine adit or cave entrance	—•—•—•—•—
Mine shaft	—•—•—•—•—
Prospect	—•—•—•—•—
Mine Dump	—•—•—•—•—
ROADS AND RELATED FEATURES	
Highway	—•—•—•—•—
Light duty road, paved	—•—•—•—•—
Light duty road, gravel	—•—•—•—•—
Unimproved road	—•—•—•—•—
Trail	—•—•—•—•—
Road block, berm, or barrier	—•—•—•—•—
Gate on road	—•—•—•—•—
Cattle crossing guard	—•—•—•—•—
Railroad	—•—•—•—•—
RIVERS, LAKES, SHORELINES, AND CANALS	
Perennial stream/ditch	—•—•—•—•—
Perennial river	—•—•—•—•—
Intermittent stream/ditch	—•—•—•—•—
Perennial lake/pond	—•—•—•—•—
Intermittent lake/pond	—•—•—•—•—
Dry lake/pond	—•—•—•—•—
Buried aqueduct, flume, or conduit	—•—•—•—•—
Well Name	—•—•—•—•—
Flood Plain	—•—•—•—•—
Drainage Direction	—•—•—•—•—
VEGETATION	
Woodland	—•—•—•—•—
WETLANDS (USFWS National Wetland Inventory)	
Freshwater Emergent	—•—•—•—•—
Freshwater Forested/Shrub	—•—•—•—•—
Estuarine	—•—•—•—•—
Riverine	—•—•—•—•—
TRANSMISSION LINES AND PIPELINES	
Power transmission line, pole, tower	—•—•—•—•—
MINING FEATURES	
DRMS Permit Boundary	—•—•—•—•—
Fixed Structures	—•—•—•—•—
Mobile Structures	—•—•—•—•—
Mining Phases	—•—•—•—•—
Berm/window	—•—•—•—•—
POST-MINING CONTOURS	
Index	—•—•—•—•—
Approximate of indefinite	—•—•—•—•—
Intermediate	—•—•—•—•—
Approximate of indefinite	—•—•—•—•—
Supplementary	—•—•—•—•—

Map C-2 Partial Mining
Trout Valley Ranch
Brannan Sand & Gravel, LLC

DRMS Permit Number: M-2016-080

Mine Entry Location: Latitude: 39.2060°N Longitude: 105.9936°W

State: Colorado County: Park Nearest Town: Fairplay (0.5 miles)

Section: 4, 3, & 2 Township: 10S Range: 77W PM: 6th

Major Watershed: South Platte River

Map Scale: 1"=500'

Map Georeferencing Information: Datum: NAD83 Projection: Colorado State Plane Central

Survey Source: Google Survey Date: ---

Imagery Source: Google Imagery Date: 2016

Drawn by: BEL Date: 03/20/20

Checked by: BEL Date: 05/20/20

Approved by: BEL Date: 05/20/20

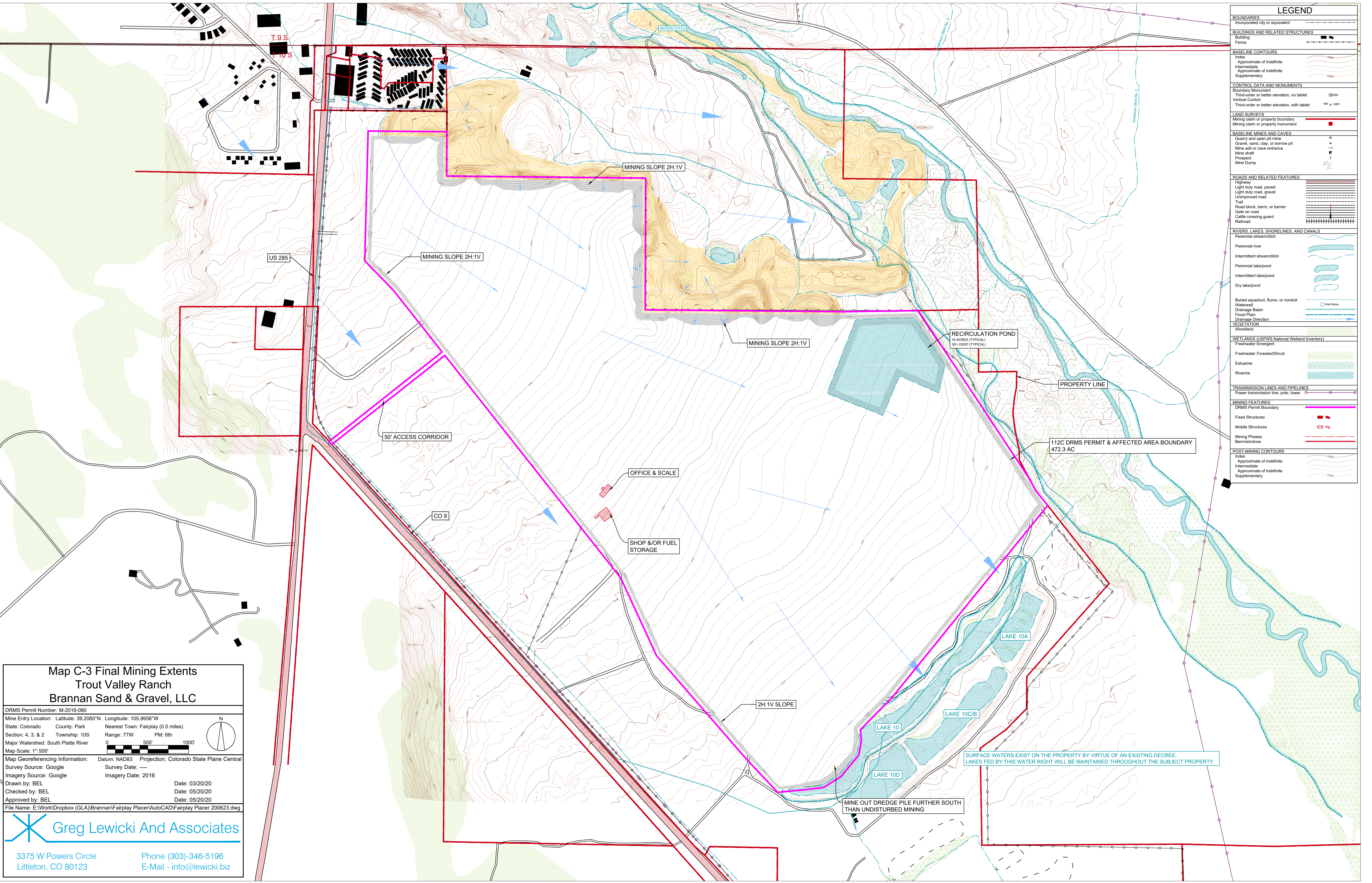
File Name: E:\Work\Dropbox (GLA)\Brannan\Fairplay Placer\AutoCAD\Fairplay Placer 200623.dwg

Greg Lewicki And Associates

3375 W Powers Circle
Littleton, CO 80123

Phone (303)-346-5196
E-Mail - info@lewicki.biz

THIS EXHIBIT REPRESENTS A POTENTIAL INTERMEDIATE MINING STAGE.
INITIAL MINING OPERATIONS WILL RECOVER DREDGE PILE AGGREGATE MATERIALS LOCATED NORTH OF THE PROCESSING AREA.
THE OPERATOR MAY PURSUE FURTHER RECOVERY OF MATERIALS IN ANY DIRECTION,
SUBJECT TO TOTAL MINING IMPACTS & LIMITED TO THE FINANCIAL WARRANTY AMOUNT



LEGEND	
BOUNDARIES	
Incorporated city or equivalent	
BUILDINGS AND RELATED STRUCTURES	
Building	
Fence	
BASELINE CONTOURS	
Index	
Approximate of indefinite	
Intermediate	
Approximate of indefinite	
Supplementary	
CONTROL DATA AND MONUMENTS	
Boundary Monument	
Third-order or better elevation, no tablet	
Vertical Control	
Third-order or better elevation, with tablet	
LAND SURVEYS	
Mining claim or property boundary	
Mining claim or property monument	
BASELINE MINES AND CAVES	
Quarry and open pit mine	
Gravel, sand, clay, or borrow pit	
Mine adit or cave entrance	
Mine shaft	
Prospect	
Mine Dump	
ROADS AND RELATED FEATURES	
Highway	
Light duty road, paved	
Light duty road, gravel	
Unimproved road	
Trail	
Road block, berm, or barrier	
Gate on road	
Cattle crossing guard	
Railroad	
RIVERS, LAKES, SHORELINES, AND CANALS	
Perennial stream/ditch	
Perennial river	
Intermittent stream/ditch	
Perennial lake/pond	
Intermittent lake/pond	
Dry lake/pond	
Buried aqueduct, flume, or conduit	
Waterwell	
Drainage Basin	
Flood Plain	
Drainage Direction	
VEGETATION	
Woodland	
WETLANDS (USFWS National Wetland Inventory)	
Freshwater Emergent	
Freshwater Forested/Shrub	
Estuarine	
Rivine	
TRANSMISSION LINES AND PIPELINES	
Power transmission line, pole, tower	
MINING FEATURES	
DRMS Permit Boundary	
Fixed Structures	
Mobile Structures	
Mining Phases	
Berm/windrow	
POST-MINING CONTOURS	
Index	
Approximate of indefinite	
Intermediate	
Approximate of indefinite	
Supplementary	

Map C-3 Final Mining Extents
Trout Valley Ranch
Brannan Sand & Gravel, LLC

DRMS Permit Number: M-2016-080

Mine Entry Location: Latitude: 39.2060°N Longitude: 105.9936°W

State: Colorado County: Park Nearest Town: Fairplay (0.5 miles)

Section: 4, 3, & 2 Township: 10S Range: 77W PM: 6th

Major Watershed: South Platte River

Map Scale: 1"= 500'

Map Georeferencing Information: Datum: NAD83 Projection: Colorado State Plane Central

Survey Source: Google Survey Date: ----

Imagery Source: Google Imagery Date: 2016

Drawn by: BEL Date: 03/20/20

Checked by: BEL Date: 05/20/20

Approved by: BEL Date: 05/20/20

File Name: E:\Work\Dropbox (GLA)\Brannan\Fairplay Placer\AutoCAD\Fairplay Placer 200623.dwg

Greg Lewicki And Associates

3375 W Powers Circle
Littleton, CO 80123

Phone (303)-346-5196
E-Mail - info@lewicki.biz

LEGEND

BOUNDARIES

Incorporated city or equivalent

BUILDINGS AND RELATED STRUCTURES

Building

Fence

BASELINE CONTOURS

Index

Approximate of indefinite

Intermediate

Approximate of indefinite

Supplementary

CONTROL DATA AND MONUMENTS

Boundary Monument

Third-order or better elevation, no tablet

Vertical Control

Third-order or better elevation, with tablet

LAND SURVEYS

Mining claim or property boundary

Mining claim or property monument

BASELINE MINES AND CAVES

Quarry and open pit mine

Gravel, sand, clay, or borrow pit

Mine adit or cave entrance

Mine shaft

Prospect

Mine Dump

ROADS AND RELATED FEATURES

Highway

Light duty road, paved

Light duty road, gravel

Unimproved road

Trail

Road block, berm, or barrier

Gate on road

Cattle crossing guard

Railroad

RIVERS, LAKES, SHORELINES, AND CANALS

Perennial stream/ditch

Perennial river

Intermittent stream/ditch

Perennial lake/pond

Intermittent lake/pond

Dry lake/pond

Buried aqueduct, flume, or conduit

Waterwell

Drainage Basin

Flood Plain

Drainage Direction

VEGETATION

Woodland

WETLANDS (USFWS National Wetland Inventory)

Freshwater Emergent

Freshwater Forested/Shrub

Estuarine

Rivine

TRANSMISSION LINES AND PIPELINES

Power transmission line, pole, tower

MINING FEATURES

DRMS Permit Boundary

POST-RECLAMATION CONTOURS

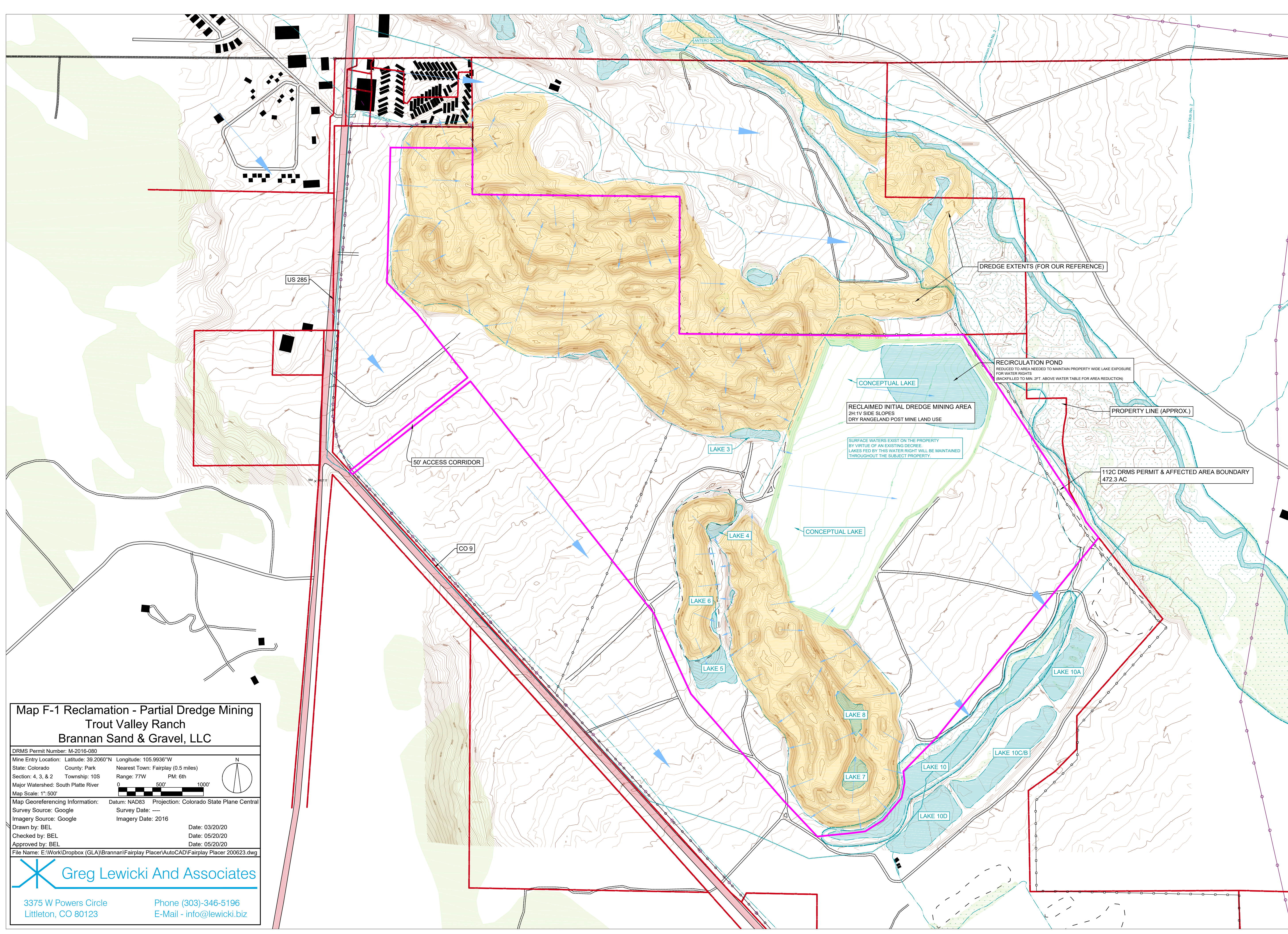
Index

Approximate of indefinite

Intermediate

Approximate of indefinite

Supplementary



Map F-1 Reclamation - Partial Dredge Mining
Trout Valley Ranch
Brannan Sand & Gravel, LLC

DRMS Permit Number: M-2016-080

Mine Entry Location: Latitude: 39.2060°N Longitude: 105.9936°W

State: Colorado County: Park Nearest Town: Fairplay (0.5 miles)

Section: 4, 3, & 2 Township: 10S Range: 77W PM: 6th

Major Watershed: South Platte River

Map Scale: 1"=500'

Map Georeferencing Information: Datum: NAD83 Projection: Colorado State Plane Central

Survey Source: Google Survey Date: ----

Imagery Source: Google Imagery Date: 2016

Drawn by: BEL Date: 03/20/20

Checked by: BEL Date: 05/20/20

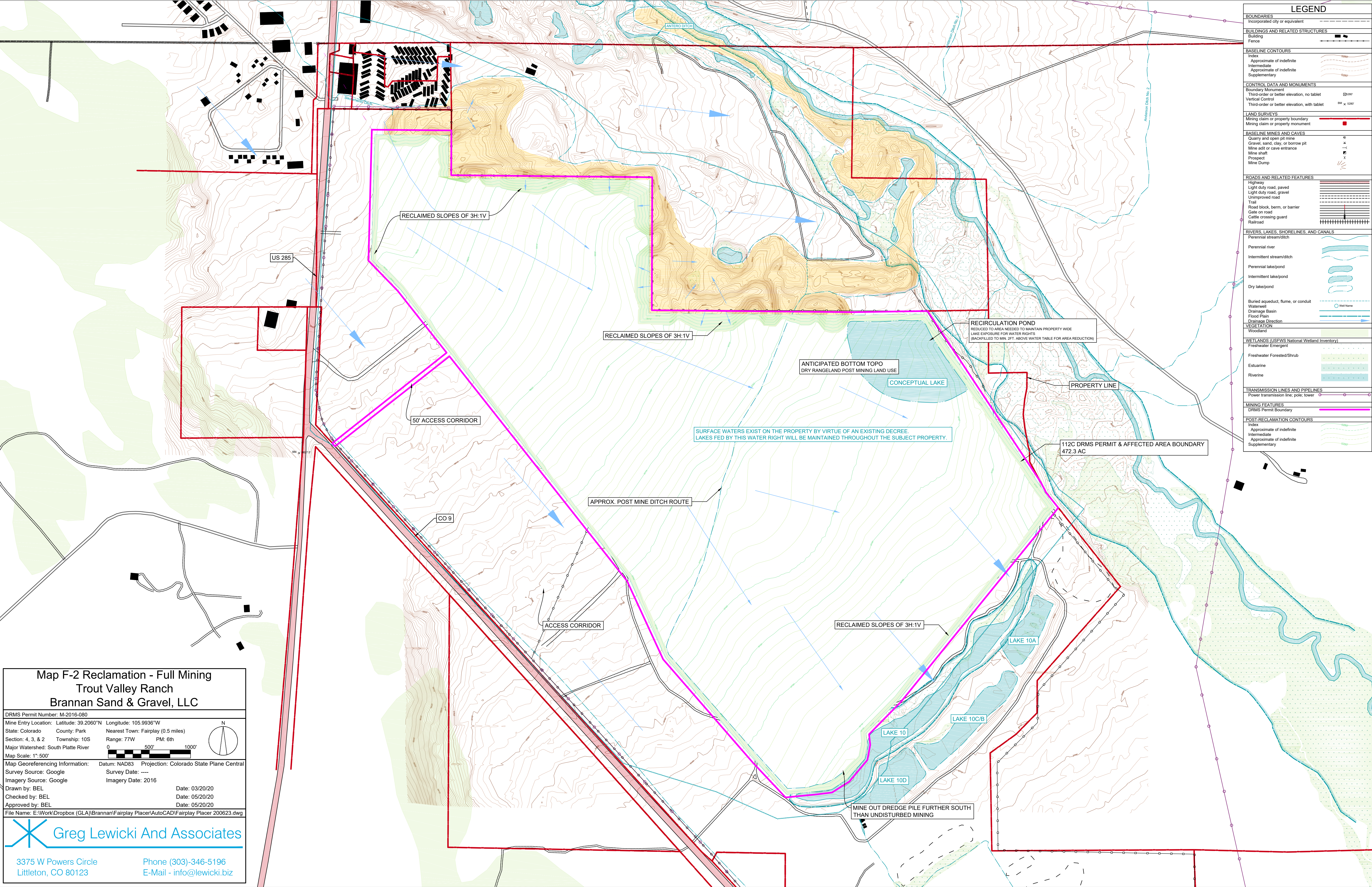
Approved by: BEL Date: 05/20/20

File Name: E:\Work\Dropbox (GLA)\Brannan\Fairplay Placer\AutoCAD\Fairplay Placer 200623.dwg

Greg Lewicki And Associates

3375 W Powers Circle
Littleton, CO 80123

Phone (303)-346-5196
E-Mail - info@lewicki.biz



LEGEND	
BOUNDARIES	
Incorporated city or equivalent	
BUILDINGS AND RELATED STRUCTURES	
Building	
Fence	
BASELINE CONTOURS	
Index	
Approximate of indefinite	
Intermediate	
Approximate of indefinite	
Supplementary	
CONTROL DATA AND MONUMENTS	
Boundary Monument	
Third-order or better elevation, no tablet	
Vertical Control	
Third-order or better elevation, with tablet	
LAND SURVEYS	
Mining claim or property boundary	
Mining claim or property monument	
BASELINE MINES AND CAVES	
Quarry and open pit mine	
Gravel, sand, clay, or borrow pit	
Mine adit or cave entrance	
Mine shaft	
Prospect	
Mine Dump	
ROADS AND RELATED FEATURES	
Highway	
Light duty road, paved	
Light duty road, gravel	
Unimproved road	
Trail	
Road block, berm, or barrier	
Gate on road	
Cattle crossing guard	
Railroad	
RIVERS, LAKES, SHORELINES, AND CANALS	
Perennial stream/ditch	
Perennial river	
Intermittent stream/ditch	
Perennial lake/pond	
Intermittent lake/pond	
Dry lake/pond	
Buried aqueduct, flume, or conduit	
Waterwell	
Drainage Basin	
Flood Plain	
Drainage Direction	
VEGETATION	
Woodland	
WETLANDS (USFWS National Wetland Inventory)	
Freshwater Emergent	
Freshwater Forested/Shrub	
Estuarine	
Riverine	
TRANSMISSION LINES AND PIPELINES	
Power transmission line, pole, tower	
MINING FEATURES	
DRMS Permit Boundary	
POST-RECLAMATION CONTOURS	
Index	
Approximate of indefinite	
Intermediate	
Approximate of indefinite	
Supplementary	

Map F-2 Reclamation - Full Mining
Trout Valley Ranch
Brannan Sand & Gravel, LLC

DRMS Permit Number: M-2016-080

Mine Entry Location: Latitude: 39.2060°N Longitude: 105.9936°W

State: Colorado County: Park Nearest Town: Fairplay (0.5 miles)

Section: 4, 3, & 2 Township: 10S Range: 77W PM: 6th

Major Watershed: South Platte River

Map Scale: 1"=500'

Map Georeferencing Information: Datum: NAD83 Projection: Colorado State Plane Central

Survey Source: Google Survey Date: ----

Imagery Source: Google Imagery Date: 2016

Drawn by: BEL Date: 03/20/20

Checked by: BEL Date: 05/20/20

Approved by: BEL Date: 05/20/20

File Name: E:\Work\Dropbox (GLA)\Brannan\Fairplay Placer\AutoCAD\Fairplay Placer 200623.dwg

Greg Lewicki And Associates

3375 W Powers Circle
Littleton, CO 80123

Phone (303)-346-5196
E-Mail - info@lewicki.biz



M-2016-080 Trout Valley Ranch Technical Revision Adequacy Response

Ben Langenfeld <benl@lewicki.biz>

Wed, Jul 29, 2020 at 12:42 PM

To: "Russell - DNR, Elliott" <elliott.russell@state.co.us>

Elliott

Sorry, I meant to send these to you separately, since that one CC'd the DRMS fax. The hard copies are enroute.

Ben Langenfeld, P.E.

Greg Lewicki and Associates

3375 W Powers Circle

Littleton, CO 80123

benl@lewicki.biz

Office: (720) 842-5321

Cell: (303) 960-5613

From: Russell - DNR, Elliott <elliott.russell@state.co.us>

Sent: Wednesday, July 29, 2020 10:44 AM

To: Ben Langenfeld <benl@lewicki.biz>

Subject: Re: M-2016-080 Trout Valley Ranch Technical Revision Adequacy Response

Hey Ben,

I received your email with the adequacy review responses, but the revised TR-01 map discussed in Item 6 wasn't attached.

Thanks,

Elliott Russell

Environmental Protection Specialist

Minerals Regulatory Program



I am working remotely and can be reached at 303.903.4456

P 303.866.3567 x8132 | F 303.832.8106 | C 303.903.4456

1313 Sherman Street, Room 215, Denver, CO 80203

Elliott.Russell@state.co.us | www.colorado.gov/drms

On Mon, Jul 27, 2020 at 2:54 PM Ben Langenfeld <benl@lewicki.biz> wrote:

Please see the attached letter.

Ben Langenfeld, P.E.

Greg Lewicki and Associates

3375 W Powers Circle

Littleton, CO 80123

benl@lewicki.biz

Office: (720) 842-5321

Cell: (303) 960-5613

4 attachments



Fairplay Placer 200623-Map C-2 Partial Mining.pdf
2158K



Fairplay Placer 200623-Map C-3 Final Mining Extents.pdf
4344K



Fairplay Placer 200623-Map F-1 Reclamation - Partial Dredge Mining.pdf
4188K



Fairplay Placer 200623-Map F-2 Reclamation - Full Mining.pdf
4276K