



RPM, Inc.

July 16, 2020

Colorado Division of Reclamation, Mining and Safety

Attn: Patrick Lennberg

patrick.lennberg@state.co.us

RE: Permit File: M1986-015. Request to extend the Corrective Action Due Date 60 days, until Sept. 24, 2020 to address the regulatory and technical issues.

Dear Mr. Lennberg,

Your inspection of November 27, 2019 stipulated that Continental Materials Corporation provide, "...a Technical Revision, with the required \$216 revision fee, to update and clarify the currently approved reclamation plan to reflect existing and proposed activities by the corrective action date. The original corrective action date was February 25, 2020.

We are currently working on the survey maps to delineate the past topographic elevations, historic ground water levels, 100-year regulated flood plain boundary and estimated changes in elevations to meet both the State Engineer backfill criteria and elevations acceptable to Pueblo County flood plain manager. We have attached a very draft example of one of the three maps to give you an idea as to what we are doing.

We hope to have all completed soon and will send you copies for your review. We would like to then meet with DRMS staff to discuss the backfill issues, i.e. what the backfill elevations should be for areas within the 100-year regulated flood plain and outside the 100-year flood plain. That will then allow us to determine the volume of backfill needed complete reclamation.

For the above reason, we request the 60-day extension until Sept. 25, 2020. We are hopeful this will allow us time to meet with the affected agencies and resolve the State Engineer's two-foot criteria and the 6-inch limit on backfilling into a 100-year flood plain.

Also, given the limits with in person meetings now in effect, our ability to meet and/or contact the correct agency individuals is limited.

We appreciate your consideration for an extension.

Cc: Jerald_schnabel@castleaggregate.com



RPM, Inc.

Encl: Draft example of one of the 3 maps, the map for the west portion of Phase 7.

Regards,

H. Bruce Humphries

Regulatory Permits Management, Inc.
Consultant for Continental Materials Corp.

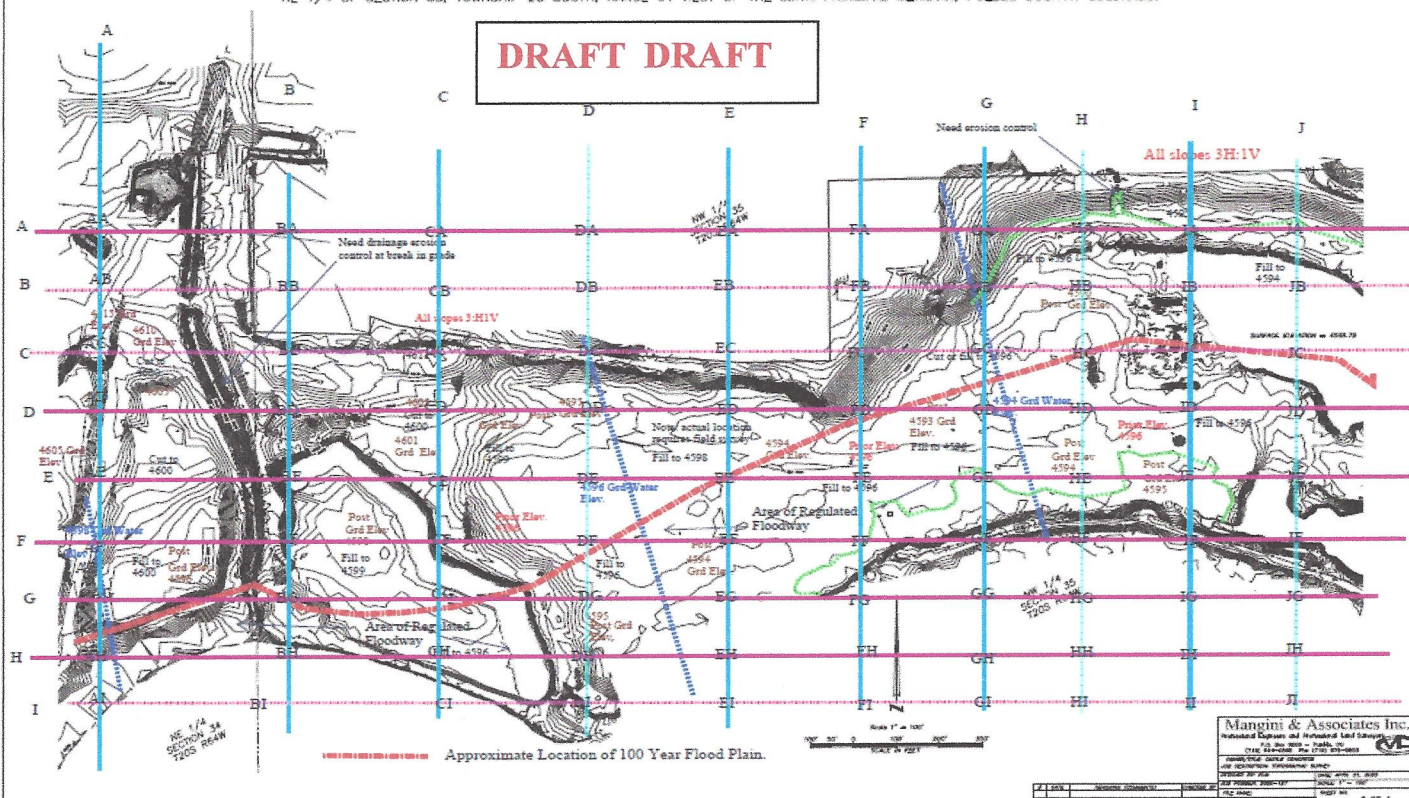


RPM, Inc.

TOPOGRAPHIC SURVEY

A TOPOGRAPHIC SURVEY LOCATED WITHIN A PORTION OF THE NE 1/4 AND THE NW 1/4 OF SECTION 34 AND THE SE 1/4 AND THE NE 1/4 OF SECTION 35, TOWNSHIP 20 SOUTH, RANGE 64 WEST OF THE SIXTH PRINCIPAL MERIDIAN, PUEBLO COUNTY, COLORADO.

DRAFT DRAFT



Pueblo East Sheet 3 of 4

Backfill

DRAFT Horizontal DRAFT

Vertical		A	B	C	D	E	F	G	H	I	J
	A	-12.5									
	B	-13									
	C	-14.5	-9								
	D	-10									
	E	-7.5									
	F	-5									



RPM, Inc.

	G	0.0									
	H	No cut/fill									
	I	No cut/fill									
+ Fill											
- Cut											