
J. E. STOVER & ASSOCIATES, INC.

2352 NORTH 7TH STREET, UNIT B
GRAND JUNCTION, COLORADO 81501
PHONE: (970) 245-4101, FAX: (970) 242-7908

MINE ENGINEERING
MINE RECLAMATION

CIVIL ENGINEERING
CONST. MANAGEMENT

July 2, 2020

Rob Zuber
Division of Reclamation, Mining & Safety
1313 Sherman St., Room 215
Denver, Colorado 80203-2273

Re: Minrec, Inc., North Thompson Creek Mines
Revised 2019 Annual Reclamation Report, Adequacy Response #1
Permit No. C-1981-025

Dear Mr. Zuber:

On behalf of Minrec, Inc., enclosed is its revised 2019 Annual Reclamation Report for the North Thompson Creek Mines as required by Rule 2.04.13. A spreadsheet is attached to show how the revised acreages were developed.

- a) Name and address of the permittee and permit number:
Minrec, Inc.
627 24 ½ Road, Unit H
Grand Junction, CO 81505
Permit C-1981-025
- b) Location and number of acres disturbed during the year:
No land disturbed during the year.
- c) Location and number of acres backfilled and graded during the year:
No land backfilled and graded during the year.
- d) Location and number of acres topsoiled during the year.
No land topsoiled during the year.
- e) Located and number of acres seeded during the year:
No land seeded during the year.

- f) Location, number of acres and date of planting for all previously revegetated areas.

	Acres	Year Seeded
Refuse Pile	8.0	1986
Flume Bases	0.2	2003
Mine Sites	26.6	1987
Developed Water Resources	4.1	1987
Truck Dump	1.8	1987
<u>Unit Train Loadout</u>	<u>24.5</u>	<u>1987</u>
Total	65.2	

- g) Noxious weed control was performed during the year.

Please call if you have any questions.

Sincerely,

J. E. Stover

J. E. Stover, P.E.
Consulting Engineer

North Thompson Creek Mines		
2019 ARR		
Total Mine Site Disturbed Ares	47.6	
Total Loadout Disturbed Area	37.6	
Total Disturbed	85.2	
<u>Long Term Developed Water Resources</u>	SF	Not Reclaimed (AC)
Pipeline from No. 3 Mine to Long Pond	13065	0.3
Feed to Long Pond	465	
Long Pond	7883	
Pond T-1	4336	
Connector T-1 to T-2	315	
Pond T-2	5295	
Connector T-2 to P9	465	
Pond 9	8204	0.2
Ditch from Pond 9 to Refuse Pond	10790	
Refuse Pile Pond	13495	0.3
Access Road	18147	
Total SF Developed Water Resources	82460	
TOTAL ACRES	1.9	
<u>Permanent</u>	Acres	
Stoney Ridge Road	5.3	5.3
Stoney Ridge Fan	0.1	0.1
Long Term Water Resources	1.9	
<u>Loadout</u>		
Paved Road to Prime Farmland	9.2	9.2
Paved Truck Dump	0.9	0.9
Topsoil & Stockpile Areas	3.7	3.7
	21.1	20.0
ARR Reconciliation		
Total Disturbed Area	85.2	
Reclaimed	65.2	
Permanent	21.1	
Non Permanent	64.1	
Phase III Released	61.1	

Colorado Division of Reclamation, Mining and Safety

Annual Reclamation Report for Calendar Year – 2019

North Thompson Creek Mine	C1981025	Minrec, Inc
Mine Name	Permit Number	Permittee
627 24 1/2 Road, Unit H, Grand Junction, CO 81505		
Address		

This report, required by Rule 2.04.13, is due by February 15 of each year, or other date, as agreed upon by the Division. It should include text, discussion, and maps, at a minimum, in addition to any other reclamation monitoring data as required by the approved permit. The location of the acreage reported under each land status category and year of seeding (if applicable) should be clearly identified on a map included with the report.

Land Category	Last Year's Cumulative Total (from last year's ARR)	This Calendar Year			Cumulative Total
		Acres Added (+)	Acres Subtracted (-)		
Acreage in Active Mining Areas ¹	0	0	0	=	0

Land Category	Last Year's Cumulative Total (from last year's ARR)	This Calendar Year			Cumulative Total
		Acres Added (+)	Acres Subtracted (-)		
Acres Disturbed ²	65.9	19.3	0	=	85.2
Acres Backfilled and Graded	65.2	0	0	=	65.2
Acres Topsoiled	65.2	0	0	=	65.2

Acreage in Long-term Facilities ³	Last Year's Cumulative Total (from last year's ARR)	This Calendar Year			Cumulative Total
		Acres Added (+)	Acres Subtracted (-)		
Non-Permanent Facilities	0	64.1	0	=	64.1
Permanent Facilities (permitted)	4.8	16.3	0	=	21.1
Totals	4.8			=	85.2

Acres Seeded (permanent)	Last Year's Cumulative Total (from last year's ARR)	This Calendar Year			Cumulative Total
		Acres Added (+)	Acres Subtracted (-)		
9 Years and Less	0	0	0	=	0
10 Years and Greater	4.8	60.4	0	=	65.2
Totals	4.8			=	65.2

Bond Release	Last Year's Cumulative Total (from last year's ARR)	This Calendar Year			Cumulative Total
		Acres Added (+)	Acres Subtracted (-)		
Phase I Released	65.2	0	0	=	65.2
Phase II Released	65.2	0	0	=	65.2
Phase III Released	61.1	0	0.0	=	61.1

¹Includes pits, topsoil stripped areas in advance of pits, and spoil not backfilled and graded

²Surface Mine Acres Disturbed = B&G + Long-Term Facilities + Active Mining Areas; Underground Mine Acres Disturbed = B&G + Long-Term Facilities; Separately-permitted Loadouts = B&G + Long-Term Facilities

³Includes haul, access and light-use roads, temporary dams and impoundments; permanent dams and impoundments; diversion and collector ditches, water and air monitoring sites; topsoil stockpiles; overburden stockpiles; repair, storage and construction areas; office area, repair shops, and parking; coal stockpiles, loading, and processing areas; railroads; coal conveyors; refuse piles and coal mine waste impoundments; head-of-hollow fills; valley fills; ventilation shafts and entryways; and non-coal waste disposal area (garbage dumps and coal combustion by-products disposal areas).

T8S, R89W

34 | 35

 DM-3

No. 3 MINE

MANHOLE

DM-

No. 1 M

LONG POND



POND 9







North Thompson Creek

OUTFALL 001

REFUSE POND

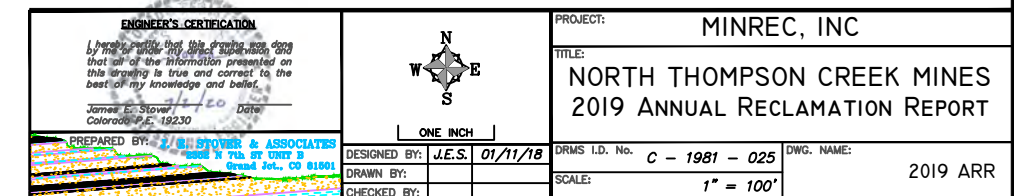
Refuse Pond

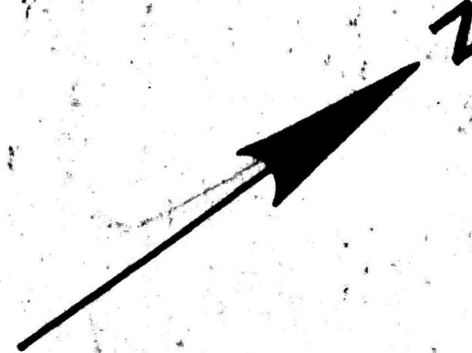
LEGEND

-  PERMIT BOUNDARY
 LONG TERM FACILITY PONDS, PIPES & DITCHES
 LONG TERM FACILITY ROADS
 TRAIL
 PERMANENT POWERLINE
 LANDOWNER INSTALLED PIPELINE

REVISIONS	12	2016 ARR	JES	01/16/17	
	11	2015 ARR	JES	02/03/16	
	10	2014 ARR	JES	1/09/15	
	9	2013 ARR	JES	1/10/14	
	8	2012 ARR	JES	1/11/13	
	7	2010 ARR	JES	2/2/11	
	6	2009 ARR	JES	1/2/10	
No. DESCRIPTION:			REFERENCES	BY	DATE

SEE DRAWING D-2-1 FOR FULL
EXTENT OF PERMANENT STONEY
RIDGE ACCESS ROAD





Pastureland and Facilities in Support of Pastureland:
The paved road from the County road to the truck dump including stockpile areas were released as a permanent facility by SL-05, decision dated March 24, 2003
The permanent facilities include:
1. Paved road to truck dump 9.2
2. Paved truck dump area 0.9
3. Topsoil & Stockpile areas .37
Total Permanent Acres 13.8

CRYSTAL RIVER RANCH

DIAMOND S RANCH

LOAD OUT SITE PERMIT BOUNDARY

CENTERLINE ROARING FORK RIVER

Diamond A Parcel:
The Division's proposed decision dated November 23, 1993 released the bond on the Diamond A Parcel. This was a full and final bond release for the Diamond A Parcel which was developed into a residential community with a golf course by others. The Diamond A Parcel was removed from the permit by the Division's approval of TR-15 on February 1, 1994.

POST MINING LAND USE

- PASTURELAND - FACILITIES IN SUPPORT OF PASTURELAND
- UNDEVELOPED PRIVATE LAND
- RANGELAND
- INDUSTRIAL AND RESIDENTIAL

Drawing from PAP Drawing D-3-3a

<p>ENGINEER'S CERTIFICATION</p> <p>I hereby certify that this drawing was done by me or under my direct supervision and that all the information presented on this drawing is true and correct to the best of my knowledge and belief.</p> <p>James E. Stover, P.E. 19230</p> <p>PREPARED BY: J. STOWER & ASSOCIATES 2000 N 7th ST UNIT B Grand Jct., CO 81501</p>		PROJECT: MINREC, INC	
		TITLE: NORTH THOMPSON CREEK MINES 2019 ANNUAL RECLAMATION REPORT	
		DESIGNED BY: J.E.S. 01/11/18	DRMS I.D. No. C - 1981 - 025
		DRAWN BY:	SCALE: 1" = 400'
CHECKED BY:		DWG. NAME: LOADOUT ARR	