



REALtime Aquifer Services

July 1, 2020

Page 1 of 2

Mr. Elliott R. Russell  
Environmental Protection Specialist  
Colorado Division of Reclamation, Mining and Safety  
1313 Sherman Street, Room 215  
Denver, Colorado 80203

Subject: Technical Revision (TR-09) to Gillette Sand & Gravel, Inc. Permit No. M-1992-009

Dear Mr. Russell:

On behalf of Mr. Chris Pyles, owner and operator of the Gillette Sand and Gravel Mine (“the mine”), Realtime Aquifer Services (“RAS, Inc.”) has prepared the attached Technical Revision (TR) to Permit No. M-1992-009.

The objective of TR-09 is to add the existing crusher and wash plant in the central process area as part of the closed-loop material processing operation. The crusher and wash plant are integral to the operation of the plant and to maintain operational compliance, we request that its use be approved. Apart from improving mine operational efficiency, there are no anticipated changes in mine operation resulting from the addition of the crusher. The approximate crusher and wash plant locations are to the east of the sediment pond shown in the attached, revised Exhibit D. As with all aspects of operation at the Gillette Mine, the crusher will be operated in a manner that is protective of the environment through the use of sound engineering and work practices.

There is no increase in the affected acreage or area of disturbance of the Mined Land Reclamation Permit (M-1992-009) and changes are all within the affected Mined Land Reclamation Permit boundary. There is no material change in the approved Mined Land Reclamation Permit, nor any change in the approved post-mining use. There are no anticipated changes in the hydrologic cycle at the mine and no substantive visual changes will be evident. There are no material additional demands on Teller County services or infrastructure, and changes proposed by the TR will have no impact on adjoining land uses. We will provide appropriate air permitting information for the operation and permitting information from Teller County.



REALtime Aquifer Services

July 1, 2020

Page 2 of 2

We will await your response and will provide any requested information in a timely manner. Should you have any questions or concerns, please contact me at 303-808-6133 or at [bren.shine@q.com](mailto:bren.shine@q.com).

Regards,  
Realtime Aquifer Services

Brendan Shine, P.E.  
Senior Geological Engineer

William Pedler  
President/ Geological Engineer

Cc: Chris Pyles, President  
Teller County Planning Department

Attachment:  
Technical Revision, Gillette Mine, Permit No. M-1992-009

cc: Chris Pyles, Gillette Sand and Gravel, Inc. Ute Pass Concrete-Sand & Gravel,  
[utesng@yahoo.com](mailto:utesng@yahoo.com)

Attachment:  
Technical Revision No. 9, Gillette Mine, Permit No. M-1992-009

## **EXHIBIT D - Technical Revision 09 to Exhibit D of the Mining Plan**

This Technical Revision (TR) has been prepared as an addendum to Exhibit D of the Department of Reclamation, Mining and Safety (DRMS), Permit No. M-1992-009. Changes to the existing mining plan include use of the existing crusher/wash plant in the process area.

### **Processing**

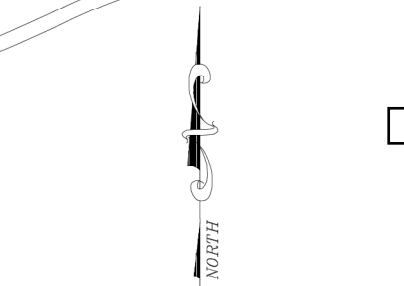
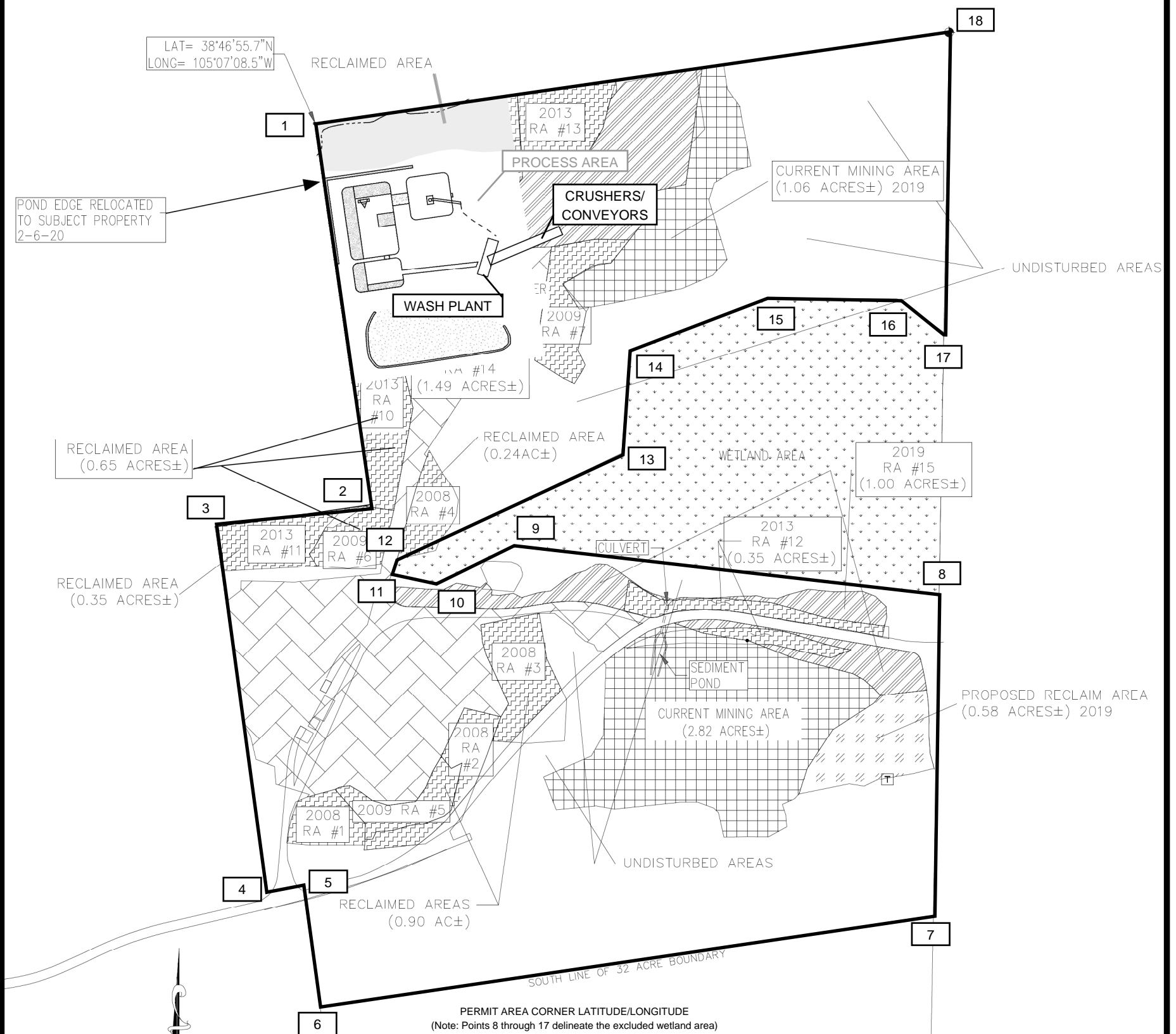
Unless classification is performed at the extraction site by a portable crusher or screen plant, the central plant will be used for gravel sorting and washing. Part of this process will require crushing operations. If washing is required, it will also be performed at the central plant. The plant location is to the east of the settlement ponds and is shown in the attached Exhibit D.

The crusher and wash plant are Cedar Rapids units with the following elements:

- The primary plant feed (to the primary jaw crusher) is through a 50-foot long by 36-inch wide belt/plate feeder.
- The primary jaw crusher is 36-inches by 24-inches.
- The secondary cone crusher is 36-inches in diameter with a five-foot by twelve-foot, three-deck screen.
- Material is sent from the secondary crusher to the wash plant through a 60-foot long by 30-inch wide conveyor.
- The wash plant is a five-foot by 16-foot, three deck Gator screen plant.
- The system is equipped with four, 18-inch by 36-foot coarse material finish washers.

Aggregate wash operations will use water to remove unwanted fines in a zero-discharge system. The water is purchased from the City of Cripple Creek water main through an existing, on-site, metered tap. The sediment-laden water is circulated from the wash plant through three sequential sedimentation (settling) ponds before it is pumped back to the plant for re-use in washing operations.

EXHIBIT D



SCALE: 1" = 200'  
JOB NO.: 19380  
FEBRUARY 6, 2020

LEGEND

- 7 Key to Permit Area corner latitude/longitude
- Permit Area Boundary (including wetland exclusic areas)
- AREA OF EXCAVATION TO BE RECLAIMED
- CURRENT MINING
- RECLAIMED AREA
- WETLAND
- MINED AREA
- FUTUR IFASFD MINING ARFA
- RECLAIMED AREA 2019

PERMIT AREA CORNER LATITUDE/LONGITUDE  
(Note: Points 8 through 17 delineate the excluded wetland area)

Corner ID	Lat N	Long W
1	38.78214°	-105.1188°
2	38.78034°	-105.1187°
3	38.78023°	-105.1196°
4	38.77852°	-105.1193°
5	38.77854°	-105.1191°
6	38.77797°	-105.1190°
7	38.77840°	-105.1153°
8	38.77991°	-105.1153°
9	38.78014°	-105.1178°
10	38.77997°	-105.1183°
11	38.78001°	-105.1185°
12	38.78008°	-105.1185°
13	38.78058°	-105.1172°
14	38.78106°	-105.1171°
15	38.78131°	-105.1163°
16	38.78131°	-105.1155°
17	38.78115°	-105.1152°
18	38.78256°	-105.1152°

AREA DESCRIPTION	ORIGINAL AREA		AREA AS OF 2019	
	SQUARE FEET	ACRES	SQUARE FEET	ACRES
2008 RECLAIMED AREA #1	9,808 S.F.	0.23 AC±	9,612 S.F.	0.22 AC±
2008 RECLAIMED AREA #2	13,858 S.F.	0.32 AC±	12,206 S.F.	0.28 AC±
2008 RECLAIMED AREA #3	22,521 S.F.	0.52 AC±	27,975 S.F.	0.41 AC±
2008 RECLAIMED AREA #4	10,423 S.F.	0.24 AC±	10,423 S.F.	0.23 AC±
2009 RECLAIMED AREA #5	11,049 S.F.	0.25 AC±	11,012 S.F.	0.25 AC±
2009 RECLAIMED AREA #6	10,429 S.F.	0.24 AC±	10,429 S.F.	0.24 AC±
2009 RECLAIMED AREA #7	28,731 S.F.	0.66 AC±	16,872 S.F.	0.38 AC±
2013 RECLAIMED AREA #8	18,890 S.F.	0.43 AC±	18,890 S.F.	0.43 AC±
2013 RECLAIMED AREA #9	46,737 S.F.	1.07 AC±	43,519 S.F.	1.00 AC±
2013 RECLAIMED AREA #10	23,652 S.F.	0.54 AC±	20,474 S.F.	0.47 AC±
2013 RECLAIMED AREA #11	15,220 S.F.	0.35 AC±	15,220 S.F.	0.35 AC±
2013 RECLAIMED AREA #12	24,395 S.F.	0.56 AC±	15,117 S.F.	0.35 AC±
2013 RECLAIMED AREA #13	19,743 S.F.	0.45 AC±	17,572 S.F.	0.40 AC±
2019 RECLAIMED AREA #14			65,118 S.F.	1.49 AC±
2019 RECLAIMED AREA #15			37,543 S.F.	0.86 AC±
TOTAL RECLAIMED AREA		5.86 AC±		7.36 AC±

Applicant: Gillette Sand  
and Gravel, Inc.  
Brendan Shine, P.E.  
RealTime Aquifer Services



REALtime Aquifer Services  
311 Rock Avenue • Golden, CO 80401  
PH 303-517-0509 • www.rasinc.org

PROJECT: GILLETTE PONDS

Exhibit D Showing Sediment Pond,  
Crusher and Wash Plant Area

Base Map: Rampart Surveys

DRAFTED BY: Ken Vogel

APPROVED BY: BFS

SCALE: 1 inch = 200 feet

DATE: Revised 07/01/2020