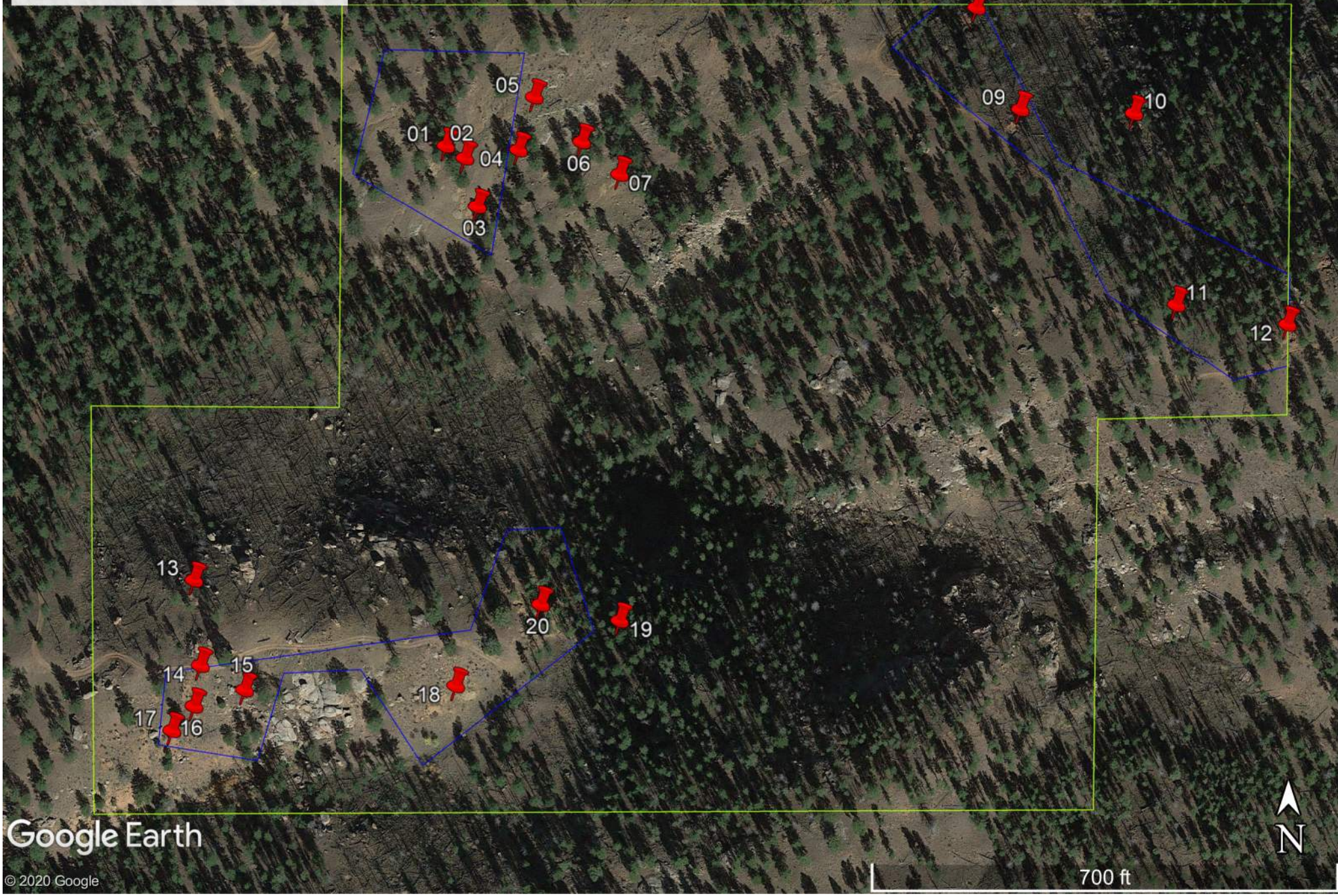


# Existing Holes

Ulrich-Rovedo Mine  
DRMS Permit File M-2019-057  
USFS 2810-021210-MPO-2019-003





GPS Location: Latitude 39° 1.711'N Longitude 105° 20.634'W

Approximate Size: 100sq ft +/-

Notes: This disturbance was created by the operator over the course of several weekends in the spring of 2018 and was back filled in the fall of 2018.





GPS Location: Latitude 39° 1.708'N Longitude 105° 20.628'W

Approximate Size: 400sq ft +/-

Notes: This disturbance was created by the operator during the spring and summer of 2019, and was back-filled and seeded in the fall of 2019.







GPS Location: Latitude 39° 1.696'N Longitude 105° 20.624'W

Approximate Size: 800sq ft +/-

Notes: This disturbance combines several smaller holes created by the operator over the course of several collecting seasons starting in 2014. The majority of this area has been back filled, and was seeded in the fall of 2019. We intend to return to this area at some point in the future, and will continue to practice "contemporaneous reclamation" when we do.



GPS Location: Latitude 39° 1.710'N Longitude 105° 20.611'W

Approximate Size: 100 sq ft +/-

Notes: This disturbance (prospect pit) was created and back filled by the operator in the fall of 2019 while trying to determine extents of our mine permit boundary.





GPS Location: Latitude 39° 1.723'N Longitude 105° 20.606'W

Approximate Size: 200 sq ft +/-

Notes: This disturbance (prospect pit) was created by the operator in the fall of 2019 while trying to determine extents of our mine permit boundary and was back filled in the spring of 2020.



GPS Location: Latitude 39° 1.712'N Longitude 105° 20.591'W

Approximate Size: 100 sq ft +/-

Notes: This disturbance (prospect pit) was created and back filled by the operator in the summer of 2016.



GPS Location: Latitude 39° 1.704'N Longitude 105° 20.579'W

Approximate Size: 100 sq ft +/-

Notes: This disturbance (prospect pit) was created and back filled by the operator in the summer of 2016.





GPS Location: Latitude 39° 1.745'N Longitude 105° 20.466'W

Approximate Size: 800 sq ft +/-

Notes: This disturbance was an abandon pit we discovered in 2015 that was approximately 250 sqft x 5' deep. We began a new hole above the existing hole and back filled the old hole with our tailings, and our contouring our back fill to the existing topography as we work our way up the hill. We left the old back fill pile in place to prevent waste rock from rolling down the hill and will eventually rake back over the waste rock and contour to match the surrounding hill. We plan on returning to this location in the future, and count this as one of our active disturbances.

Submitted by: Jacob P Ulrich \_\_\_\_\_ Date: \_\_\_\_\_





GPS Location: Latitude 39° 1.720'N Longitude 105° 20.452'W

Approximate Size: 400 sq ft +/-

Notes: We do not know when this disturbance was created or by who. We have no current plans to re-open this hole, but if we do at some point in the future we will back fill/ reclaim the whole disturbance.







GPS Location: Latitude 39° 1.719'N Longitude 105° 20.416'W

Approximate Size: 800 sq ft +/-

Notes: We do not know when this disturbance was created or by who. We have no current plans to re-open this hole as it is not in our mining area, and we have not yet explored and done enough prospecting on this part of the claim to know if it is an area that we are interested in mining in the future.







GPS Location: Latitude 39° 1.672'N Longitude 105° 20.403'W

Approximate Size: 1000 sq ft +/-

Notes: there are numerous existing holes of various sizes in this area (as indicated by the pictures above) that were created by unknown persons before we claimed this area in 2014. This is an area we intend to mine in the future, we may or may not re-open existing holes. If we re-open existing holes we will reclaim to the standards elsewhere described as part of this permit.





GPS Location: Latitude 39° 1.667'N Longitude 105° 20.367'W

Approximate Size: 800 sq ft +/-

Notes: This hole was started by the operator in 2016, and we have been unable to return to this area while we were waiting to get permission to use the existing road. We intend to return to this site to finish working this hole, and then backfill and seed it in accordance with our reclamation plan.





GPS Location: Latitude 39° 1.604'N Longitude 105° 20.714'W

Approximate Size: 800 sq ft +/-

Notes: there are three large holes in this area, we do not know when they were created or by who. We do not have any plans to re-open these holes as they are not in our permit boundary, and we have not yet done enough exploration/prospecting in this area to know if we want to mine this area in the future.







GPS Location: Latitude 39° 1.583'N Longitude 105° 20.712'W

Approximate Size: 800 sq ft +/-

Notes: there are several large holes in this area, we do not know when they were created or by who. We do intend to mine in this area, if we re-open an existing holes we will back fill/ reclaim to the standards described elsewhere in this plan.



GPS Location: Latitude 39° 1.577'N Longitude 105° 20.698'W

Approximate Size: 400 sq ft +/-

Notes: This disturbance was created in the fall of 2018 and spring of 2019. We started back filling in the summer of 2019 and plan to have completely back filled and seed by the end of the 2020 mining season. we do not intend to reopen this hole.





GPS Location: Latitude 39° 1.573'N Longitude 105° 20.714'W

Approximate Size: Varies

Notes: There are several existing holes and back fill mounds in this area that are largely over grown. We intend to mine in this area, but do not have any short term plans to reopen existing holes. If we do reopen existing holes we will back fill and reclaim to standards elsewhere described in this plan.







GPS Location: Latitude 39° 1.567'N Longitude 105° 20.721'W

Approximate Size: 1000 sq ft +/- (each)

Notes: There is a large hole and back fill pile at this location, and several others to the South and East of our Permit boundary. We do not have any intention of reopening these holes, or to do any prospecting or mining in the areas to the south and east of our permit boundary, now or in the future.









GPS Location: Latitude 39° 1.578'N Longitude 105° 20.631'W

Approximate Size: 1000 sq ft +/-

Notes: There are several large holes with back fill piles in this area. We do not know when they were created or by who. we do plan to mine in this area, but have no immediate plans to reopen the existing holes. If we do reopen any existing holes we will back fill and reclaim to standards described elsewhere in this plan.





GPS Location: Latitude 39° 1.594'N Longitude 105° 20.579'W

Approximate Size: 400 sq ft +/-

Notes: This disturbance is out of our boundary, we have no intentions of reopening this hole at this time.













GPS Location: Latitude 39° 1.598'N Longitude 105° 20.604'W

Approximate Size: 2000 sq ft +/-

Notes: This area has been mined heavily since the early 1990's (that I am aware of) by at least 2 other claim owners. This area was inspected by the Forest Service in 2017, and we walked this area with Amy Titterton in 2019.

Our current mining strategy in this area is to dig under old dump piles and holes, and in between existing holes, and in the process, fill existing holes and contour the dump piles to a more natural contour. We work in this area several times a year, and plan to continue to do so for several more years.

Submitted by: Jacob P Ulrich \_\_\_\_\_ Date: \_\_\_\_\_



---

## Decision Letter and Request for FW PW M2019057

---

**Jacob Ulrich** <ulrich585@comcast.net>  
To: "Russell - DNR, Elliott" <elliott.russell@state.co.us>  
Cc: "Titterington, Amy J -FS" <amy.j.titterington@usda.gov>

Fri, Jun 19, 2020 at 8:10 AM

Hi Elliot,

During the application process for our mining permit you asked that we do a better job of documenting existing holes, but allowed our application to go through with the understanding we would get it done before we started mining... This is the document attached.

I also intend to mail it early next week, I just need ink for my printer... I will also get our stuff set up on line at some point and upload this there (if that is an option), I just wanted to be sure we got you some form of documentation before it got to late in the season. Please let me know if you need any additional information on this.

Thanks,

Jacob Ulrich


---

**From:** Russell - DNR, Elliott <elliott.russell@state.co.us>  
**Sent:** Friday, February 21, 2020 9:31 AM  
**To:** Jacob Ulrich <ulrich585@comcast.net>  
**Cc:** Titterington, Amy J -FS <amy.j.titterington@usda.gov>; Gabriel Benvenuti - DNR <gabriel.benvenuti@state.co.us>  
**Subject:** Decision Letter and Request for FW PW M2019057

Jacob,

[Quoted text hidden]

---

 **M-2019-057 Existing holes.pdf**  
11427K