



June 3, 2020

Mr. Elliott R. Russell
Environmental Protection Specialist
Colorado Division of Reclamation, Mining and Safety
1313 Sherman Street, Room 215
Denver, Colorado 80203

RE: Adequacy Review No. 2 - Response TR-08; M-1992-009

Dear Mr. Russell,

On behalf of Mr. Chris Pyles, owner and operator of Gillette Sand and Gravel, Inc., RealTime Aquifer Services (RAS) has prepared this document in response to your May 27, 2020, Adequacy Review No. 2 for Technical Revision #8 (TR-08).

We have also enclosed a revised version of TR-08 to reflect the updates described herein. No other changes or edits have been incorporated into TR-08 since the May 18, 2020 version. Your May 27, 2020, Adequacy Review No. 2 comments are provided below with our response to each comment. Note that comments and responses Nos. 1 through 8 were addressed in our May 18 response and are not included in this letter.

9. *Comment:* The latitude/longitude coordinate for Boundary Corner 1 (the northwest corner) appears to plot a point approximately 50 feet west of the intended location. Please confirm this is the correct coordinate or provide a revised Exhibit D Map and latitude/longitude coordinates table reflecting a revised coordinate for Boundary Corner 1.

Response: A transcription error on the reported location of the point was found and corrected. The originally posted data provided in the May 18 response letter showed a longitude of 105.1192°. The correct longitude for this corner is 105.11902°. We have revised the northwest corner point (no. 1) latitude to -105.1190°. This revision results in moving the corner approximately 50 feet to the east. This change has been reflected in the Exhibit D table.

10. *Comment:* In response to Adequacy Item #8, the Operator submitted a revised Exhibit D Map identifying the latitude/longitude coordinates for the 8 permit boundary corners. After plotting these, the Division determined these account for approximately 38.51 acres. The Division has discovered in 2009, in response to a request by the Division, the Operator submitted a map clarifying the 32-acre permit boundary. The 6.51-acre wetlands area is not included within the permit boundary. Please revised the new Exhibit D Map and the latitude/longitude coordinates table to include the 10 additional corners around the wetlands area. Please also revise the Exhibit D Map to clearly depict the 32-acre permit boundary. The Division suggests using a heavy weighted line to portray the permit boundary.

Response: The additional corner points around the wetlands area have been included on the map and the coordinates of these points have been added to the table on the Exhibit D map. As requested, the permit boundary line weight (including the wetland area delineation) has been increased on the Exhibit D map.



The revised table showing the permit corner coordinates (including the wetland area) is provided below.

Corner ID	Lat N	Long W
1	38.78214°	-105.1190°
2	38.78034°	-105.1187°
3	38.78023°	-105.1196°
4	38.77852°	-105.1193°
5	38.77854°	-105.1191°
6	38.77797°	-105.1190°
7	38.77840°	-105.1153°
8	38.77991°	-105.1153°
9	38.78014°	-105.1178°
10	38.77997°	-105.1183°
11	38.78001°	-105.1185°
12	38.78008°	-105.1185°
13	38.78058°	-105.1172°
14	38.78106°	-105.1171°
15	38.78131°	-105.1163°
16	38.78131°	-105.1155°
17	38.78115°	-105.1152°
18	38.78256°	-105.1152°

We appreciate your comments and hope that this letter is responsive to the Adequacy Review No. 2 of TR-08. We further hope that the revised Technical Revision will satisfy the Board's Order and that Mr. Pyles can return to his important work of supplying the Teller County community with aggregate. Should you have additional questions, comments, or require any information, please contact me at 303-808-6133 or at bren.shine@q.com.

Regards,
Realtime Aquifer Services

Brendan Shine, P.E.
Senior Geological Engineer

William Pedler
President/ Geological Engineer

Cc: Chris Pyles, President
Teller County Planning Department

Attachment:
Technical Revision, Gillette Mine, Permit No. M-1992-009

cc: Chris Pyles, Gillette Sand and Gravel, Inc. Ute Pass Concrete-Sand & Gravel, utesng@yahoo.com
Jason Musick with DRMS, jason.musick@state.co.us

REALtime Aquifer Services • 311 Rock Ave • Golden, CO • 80401 • www.rasinc.org • (303)517-0509

EXHIBIT D - Gillette Mine

Technical Revision to Exhibit D of the Mining Plan

This Technical Revision (TR) has been prepared to replace Exhibit D of the Department of Reclamation, Mining and Safety (DRMS), Permit No. M-1992-009 for the Gillette Mine (the mine). Changes to the original mining plan include relocation and improvements to the process ponds. The improvements will mitigate any potential process water releases by improving the structural integrity and functionality of the ponds. The changes will also provide a buffer zone and secondary containment to the west.

EXHIBIT D - Mining Plan

Conventional surface aggregate mining is expected to continue beginning in spring 2020, with completion of mining activities anticipated in fall 2040. Resources will be extracted using bulldozers and front-end loaders (or equivalent), with transport by truck and/or conveyor. Depending on the material to be mined, it may be sized at the extraction site using a portable, self-contained screening plant and/or transported to the on-site process and wash plant (the plant) for classification and fines removal.

Extraction

Gravel extraction in the central part of the permit area will proceed in a general northerly direction, with localized extraction to the south and east of the central part of the mine. In the south pit area, extraction will proceed to the south, then to the west. Gravel will be mined from approximately 32 acres of the 49.78 acre site. The approximate 15 acre willow-sedge wetland that traverses the central part of the site will not be mined. Location and flow in the stream channel in this part of the site varies because of beaver activities.

Prior to resource extraction, topsoil will be removed and stored in close proximity to the mine process plant site (the plant; Sediment Pond Schematic) to minimize disturbance during the mining operation. The site will be mined for gravel in areas outside of the wetlands illustrated in the Pre-Mining Map (Permit No. M-1992-009, Exhibit C). The Exhibit D map shows areas of previous gravel mining and topsoil salvage.

In excess of 250,000 cubic yards of aggregate removal are anticipated to depths of approximately 15 feet using conventional bulldozers and loaders. The mined material will be classified at the extraction area using a portable screening plant. If necessary, it will be transported to the plant by truck or conveyor for additional processing. The processed aggregate will be stored at the plant site until it is hauled away with end dump tractor-trailers or similar equipment.

Processing and support facilities will include two portable crushers with classifying screens, two portable stacking conveyors, a diesel generator, and one mobile service trailer for storing oil. A scale and a 250 square-foot scale house are located at the mine entrance.

Processing

Unless classification is performed at the extraction site by portable crushers, the plant will be used for gravel sorting. All washing (where required) will also be performed at the plant. The plant location is shown on Exhibit D.

Aggregate wash operations will use a zero-discharge system to remove unwanted fines. The water used in the system is purchased from the City of Cripple Creek, through an existing, on-site, metered tap. After it has been used, the sediment-laden process water is circulated from the wash plant through three sequential sedimentation (settling) ponds before it is pumped back to the plant for re-use.

Sediment Ponds

The three process settling ponds associated with the wash plant are used to remove sediment from the process water before it is returned to the plant for re-use. There is no discharge from the ponds into the surrounding environment.

The ponds are located in the northeast quadrant of the site, 30 feet east of the western mine permit (property line) boundary. The pond locations provide a buffer to prevent sediment and water from leaving the site in the event of a release. In addition, a low berm will be located along the western, and west corner of the northwest property lines to control potential runoff from the site and to provide secondary containment in the event of a release. Secondary Containment berm dimensions will be approximately 135' (north-south) by 135' (east-west), with a minimum height of 3' and a minimum width of 3'. These dimensions will be adjusted in the field, as necessary, to ensure the intended performance of the berm. The western boundary of the mine will be fenced using soft, 4-strand wire.

Process water will move by gravity to flow sequentially from the wash plant into Pond 1 for primary settlement. When Pond 1 has reached its freeboard, it will flow over a low concrete spillway to Pond 2 for secondary settlement. The process water will then flow from Pond 2, through a concrete trough to Pond 3, where it will be pumped from a central location in the pond, via an underground return pipe where it will be reused in the wash plant.

The pond berms are of earthen construction and will be reinforced with aggregate. They will be wide enough to allow a Volvo EC300 excavator (or equivalent) to track on them for periodic sediment cleanout and maintenance. Pond 2 will have a 20 (north-south) foot by 30 foot (east-west) earthen pad to facilitate sediment clean out with the excavator.

Process pond design dimensions will be as follows:

Pond No.	East-West (feet)	North-South (feet)	Max Volume (cf)
Pond 1	60	40	9,600
Pond 2	60	100	24,000
Pond 3	70	70	19,600

Each process pond will have a maximum water depth of approximately four feet and a minimum downstream freeboard of three feet.

Pond water levels (and corresponding sediment load) will be visually monitored and recorded weekly by on-site personnel using a staff gauge. Records of the visual measurements will be maintained on-site. A copy of the form to be used for pond level monitoring and sediment removal is included with this TR.

When process water levels approach the minimum freeboard (three feet), sediment will be excavated from each of the ponds as necessary to return them acceptable operational levels. To avoid interaction of the process water with groundwater, sediment pond will not be excavated beyond the base of the existing ground surface.

The sediment will be contained within a bermed area with dimensions of approximately 80' (north-south) by 200' (east-west), with a minimum height of 3' and a minimum width of 3'. These dimensions will be adjusted in the field, as necessary, to ensure the intended performance of the sediment containment berm.

The excavated pond sediment is used as subbase fill in the reclamation process, where it will be placed as needed, graded, then covered with topsoil and seeded in accordance with the Reclamation Plan.

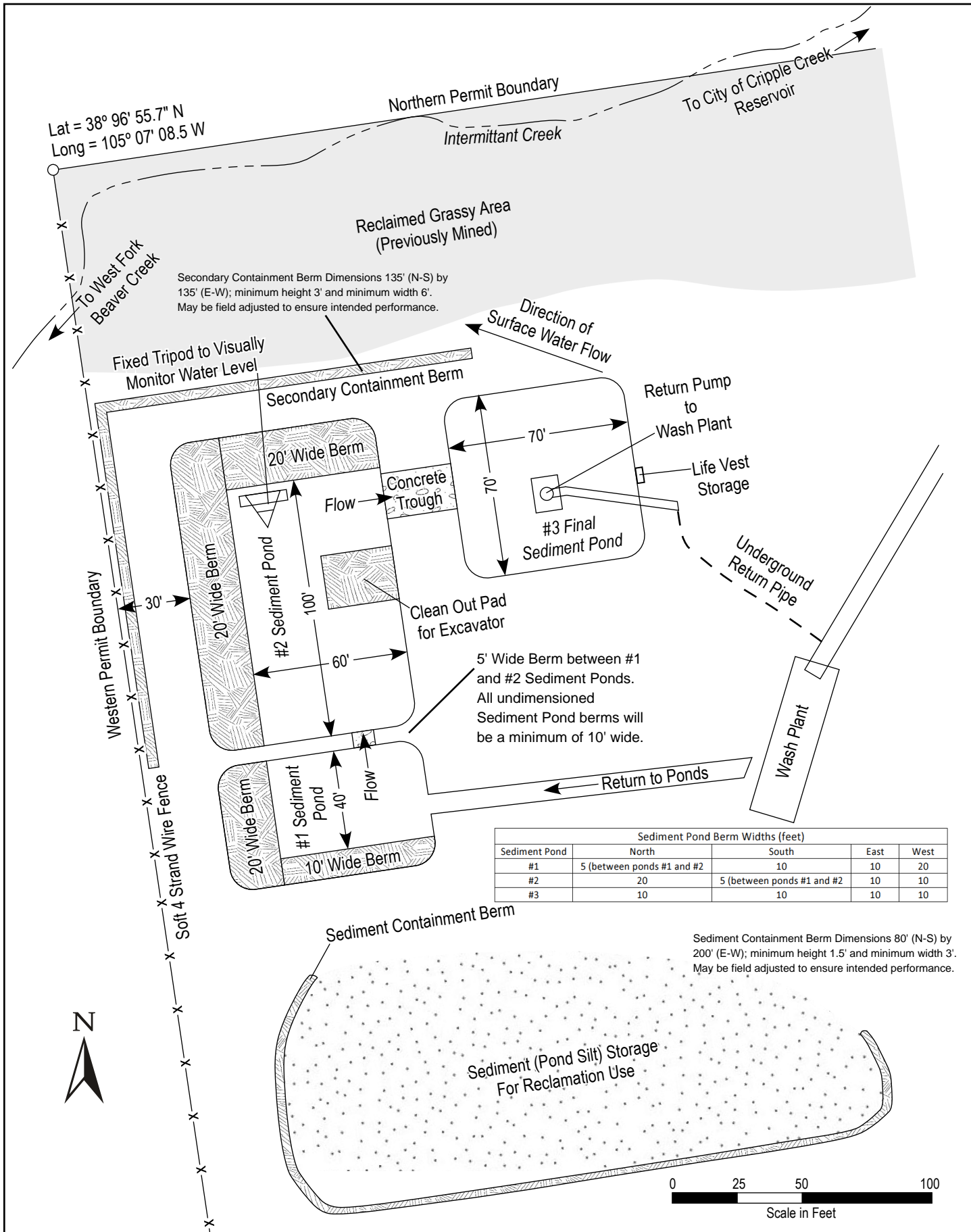
Reclamation

Affected areas will be reclaimed within eight months after completion of mining so as to coincide with summer and fall months in accordance with the reclamation plan (Exhibit E of the Permit). The remaining period of active mining is estimated to be 20 years.

The process pond area will be reclaimed by allowing process water in the ponds to evaporate and/or be used for on-site beneficial uses, such as dust control or irrigation. Process water will not be released from the site. The pond berms and other features will be removed and graded smooth to approximate the surrounding drainage patterns and terrain. The area will then be reclaimed in accordance with the reclamation plan. Any excess soils, including sediment pond dredge spoils (that were not necessary for sediment pond area reclamation) will be used as fill in the reclamation of mined parts of the Permit Area.

Attachments

1. Sediment Pond Schematic
2. Exhibit D Site Map
3. Gillette Mine Process Pond Monitoring Form



REALtime Aquifer Services

311 Rock Avenue • Golden, CO 80401
PH 303-517-0509 • www.rasinc.org

Sediment Pond Schematic

Applicant: Gillette Sand and Gravel, Inc.

Sediment Pond Schematic

Brendan Shine, P.E., Realtime Aquifer Services

DRAWN BY: Chris Pyles

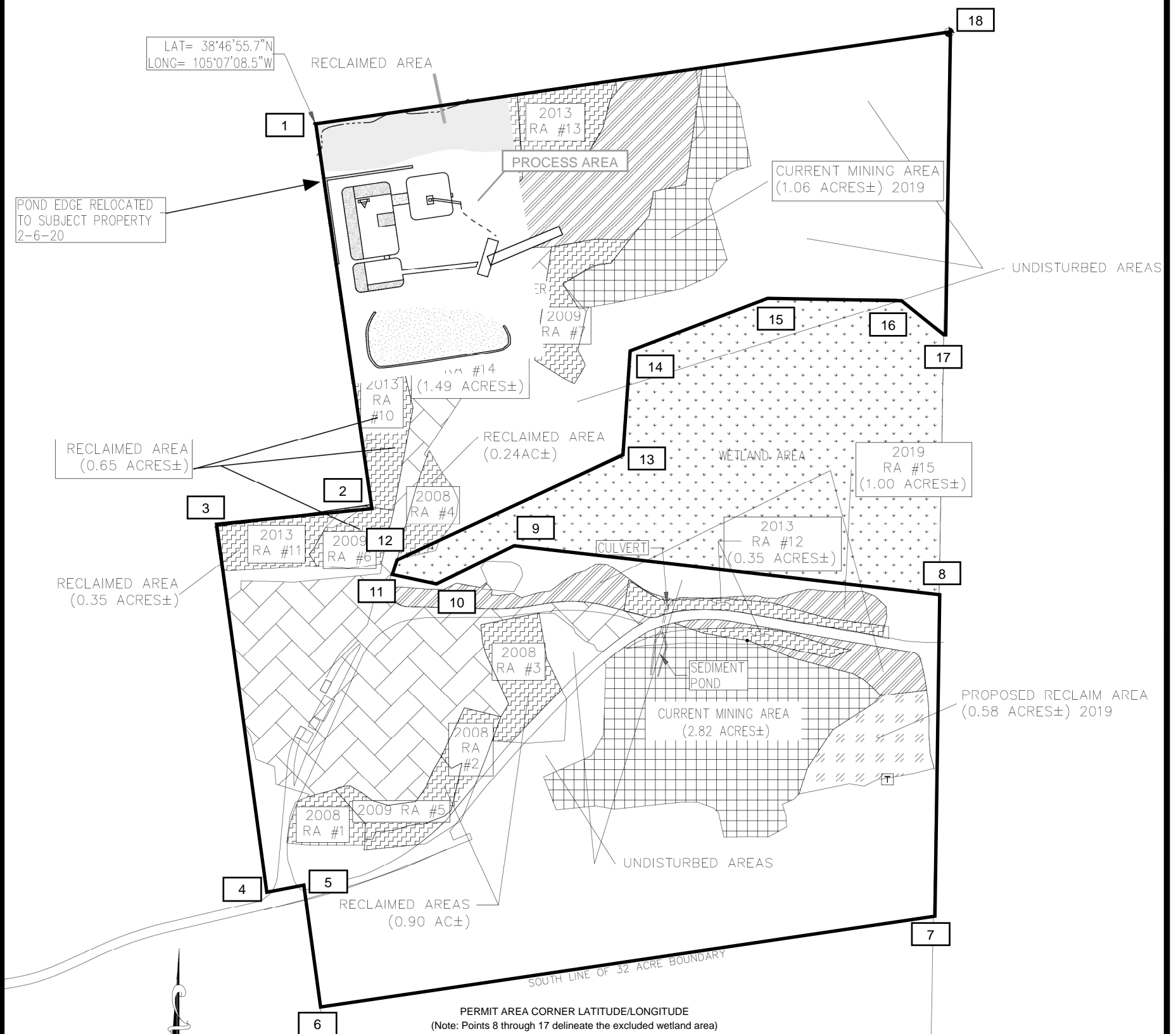
DRAFTED BY: Ken Vogel

APPROVED BY: BFS

SCALE: 1 inch = 50 feet

DATE: Revised 05/11/2020

EXHIBIT D



PERMIT AREA CORNER LATITUDE/LONGITUDE
(Note: Points 8 through 17 delineate the excluded wetland area)

Corner ID	Lat N	Long W
1	38.78214°	-105.1188°
2	38.78034°	-105.1187°
3	38.78023°	-105.1196°
4	38.77852°	-105.1193°
5	38.77854°	-105.1191°
6	38.77797°	-105.1190°
7	38.77840°	-105.1153°
8	38.77991°	-105.1153°
9	38.78014°	-105.1178°
10	38.77997°	-105.1183°
11	38.78001°	-105.1185°
12	38.78008°	-105.1185°
13	38.78058°	-105.1172°
14	38.78106°	-105.1171°
15	38.78131°	-105.1163°
16	38.78131°	-105.1155°
17	38.78115°	-105.1152°
18	38.78256°	-105.1152°

AREA DESCRIPTION	ORIGINAL AREA		AREA AS OF 2019	
	SQUARE FEET	ACRES	SQUARE FEET	ACRES
2008 RECLAIMED AREA #1	9,808 S.F.	0.23 AC±	9,612 S.F.	0.22 AC±
2008 RECLAIMED AREA #2	13,858 S.F.	0.32 AC±	12,206 S.F.	0.28 AC±
2008 RECLAIMED AREA #3	22,521 S.F.	0.52 AC±	27,975 S.F.	0.41 AC±
2008 RECLAIMED AREA #4	10,423 S.F.	0.24 AC±	10,423 S.F.	0.23 AC±
2009 RECLAIMED AREA #5	11,049 S.F.	0.25 AC±	11,012 S.F.	0.25 AC±
2009 RECLAIMED AREA #6	10,429 S.F.	0.24 AC±	10,429 S.F.	0.24 AC±
2009 RECLAIMED AREA #7	28,731 S.F.	0.66 AC±	16,872 S.F.	0.38 AC±
2013 RECLAIMED AREA #8	18,890 S.F.	0.43 AC±	18,890 S.F.	0.43 AC±
2013 RECLAIMED AREA #9	46,737 S.F.	1.07 AC±	43,519 S.F.	1.00 AC±
2013 RECLAIMED AREA #10	23,652 S.F.	0.54 AC±	20,474 S.F.	0.47 AC±
2013 RECLAIMED AREA #11	15,220 S.F.	0.35 AC±	15,220 S.F.	0.35 AC±
2013 RECLAIMED AREA #12	24,395 S.F.	0.56 AC±	15,117 S.F.	0.35 AC±
2013 RECLAIMED AREA #13	19,743 S.F.	0.45 AC±	17,572 S.F.	0.40 AC±
2019 RECLAIMED AREA #14			65,118 S.F.	1.49 AC±
2019 RECLAIMED AREA #15			37,543 S.F.	0.86 AC±
TOTAL RECLAIMED AREA		5.86 AC±		7.36 AC±

LEGEND

- 7 Key to Permit Area corner latitude/longitude
- Permit Area Boundary (including wetland exclusive areas)
- AREA OF EXCAVATION TO BE RECLAIMED
- CURRENT MINING
- RECLAIMED AREA
- WETLAND
- MINED AREA
- FUTURE IFASFD MINING AREA
- RECLAIMED AREA 2019

Applicant: Gillette Sand and Gravel, Inc.
Brendan Shine, P.E.
RealTime Aquifer Services

[Signature]



REALtime Aquifer Services
311 Rock Avenue • Golden, CO 80401
PH 303-517-0509 • www.rasinc.org

PROJECT: GILLETTE PONDS

Exhibit D Showing Sediment Pond Area

Base Map: Rampart Surveys

DRAFTED BY: Ken Vogel

APPROVED BY: BFS

SCALE: 1 inch = 200 feet

DATE: Revised 05/11/2020

GILLETTE MINE PROCESS POND MONITORING RECORD

THIS FORM IS TO BE COMPLETED ON A WEEKLY BASIS OR WITHIN ONE DAY OF A PRECIPITATION EVENT
a copy of this record must be stored on-site

[illegible]